

**Characterization and identification of bioactive polyphenols in the
Trapa bispinosa Roxb. pericarp extract**

Yuji Iwaoka¹, Shoichi Suzuki¹, Nana Kato¹, Chisa Hayakawa¹, Satoko Kawabe¹, Natsuki Ganeko¹, Tomohiro Uemura², and Hideyuki Ito^{1,*}

¹Department of Nutritional Science, Faculty of Health and Welfare Sciences, Okayama Prefectural University, 111 Kuboki, Soja, Okayama 719-1197, Japan

²Hayashikane Sangyo Co., Ltd. 2-4-8 Yamatomachi, Shimonoseki, Yamaguchi 750-8608, Japan

*Corresponding author:

Hideyuki Ito

Department of Nutritional Science, Faculty of Health and Welfare Sciences, Okayama Prefectural University, 111 Kuboki, Soja, Okayama 719-1197, Japan.

e-mail: hito@fhw.oka-pu.ac.jp

Supporting Information

Figure. S1. 1D and 2D-NMR spectra of (7'*S*, 8'*R*)-dihydrodehydrodiconiferyl alcohol-9'-*O*-β-D-glucoside (**10**). ¹H-NMR (A), ¹³C-NMR (B), HSQC (C), HMBC (D), and NOESY (E) spectra.

Figure. S2. ¹H-NMR spectrum of compounds **13** (A) and **14** (B).

Figure. S3. 1D and 2D-NMR spectra of rubuphenol (**11**) and eschweilenol A (**12**). ¹H-NMR (A), and NOESY (B) spectra.

Figure. S4. 1D and 2D-NMR spectra of compounds **15–18**. ¹H-NMR (A), ¹H-¹H COSY (B), and NOESY (C) spectra.

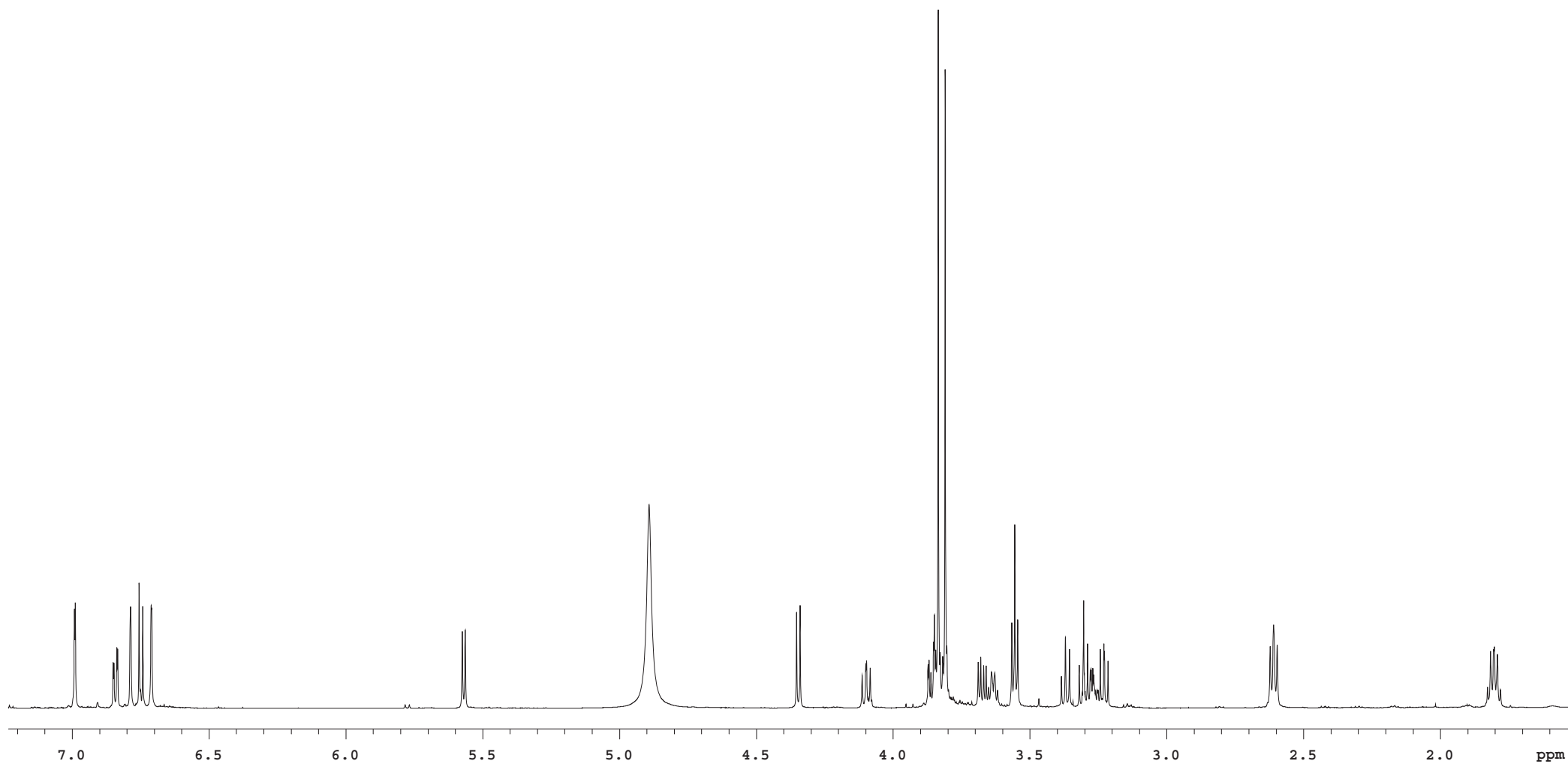


Figure.S1A

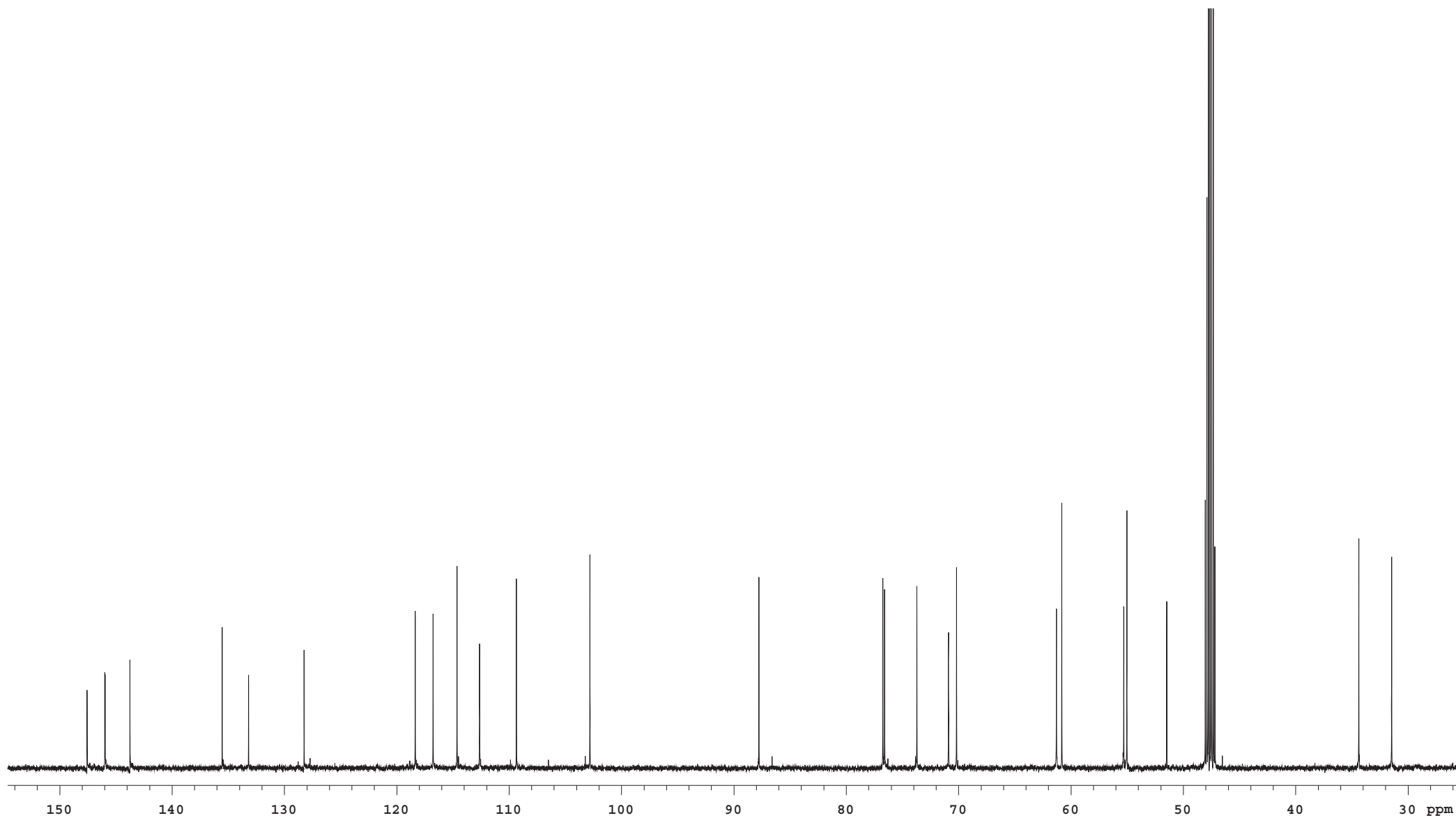


Figure. S1B

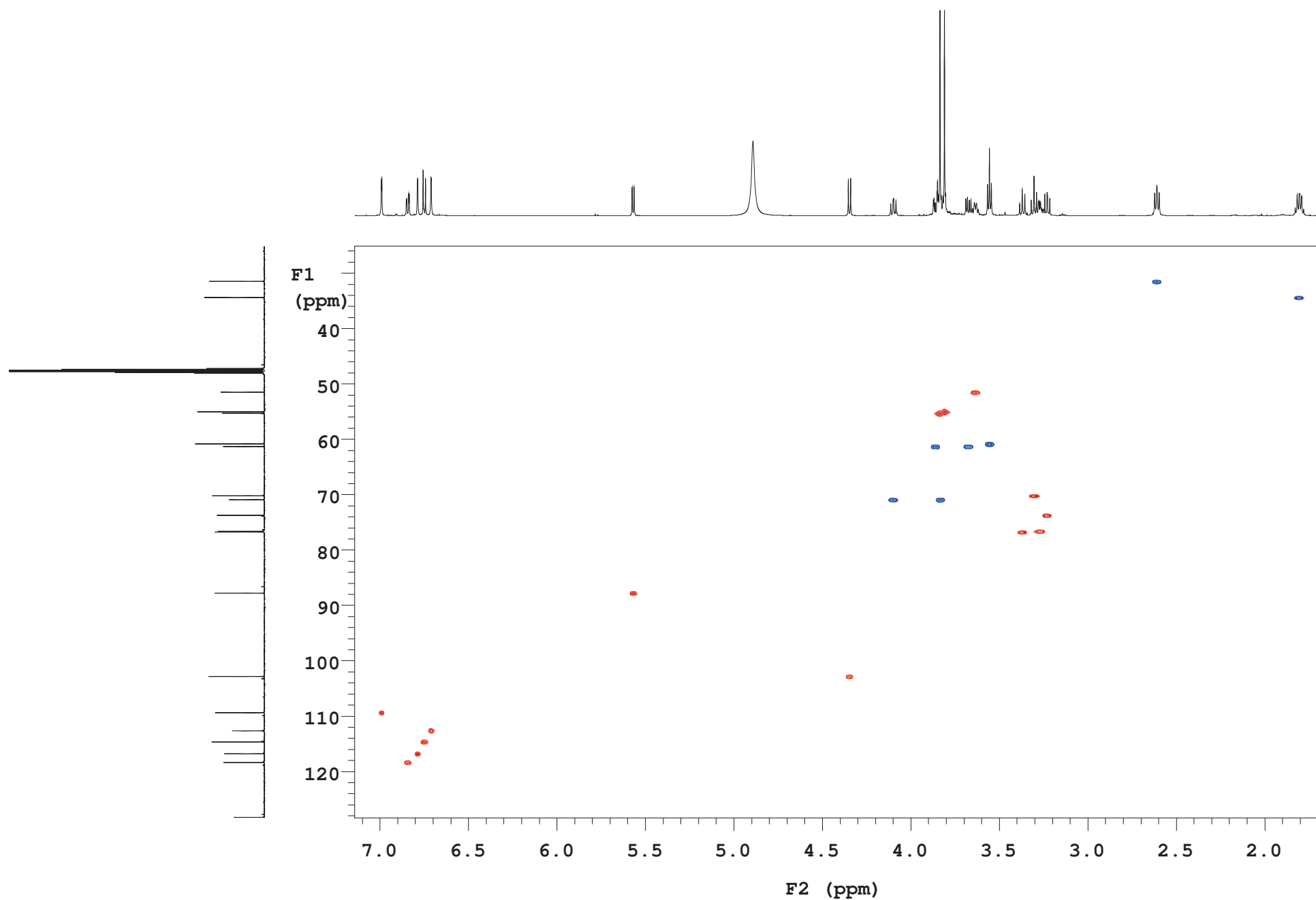


Figure. S1C

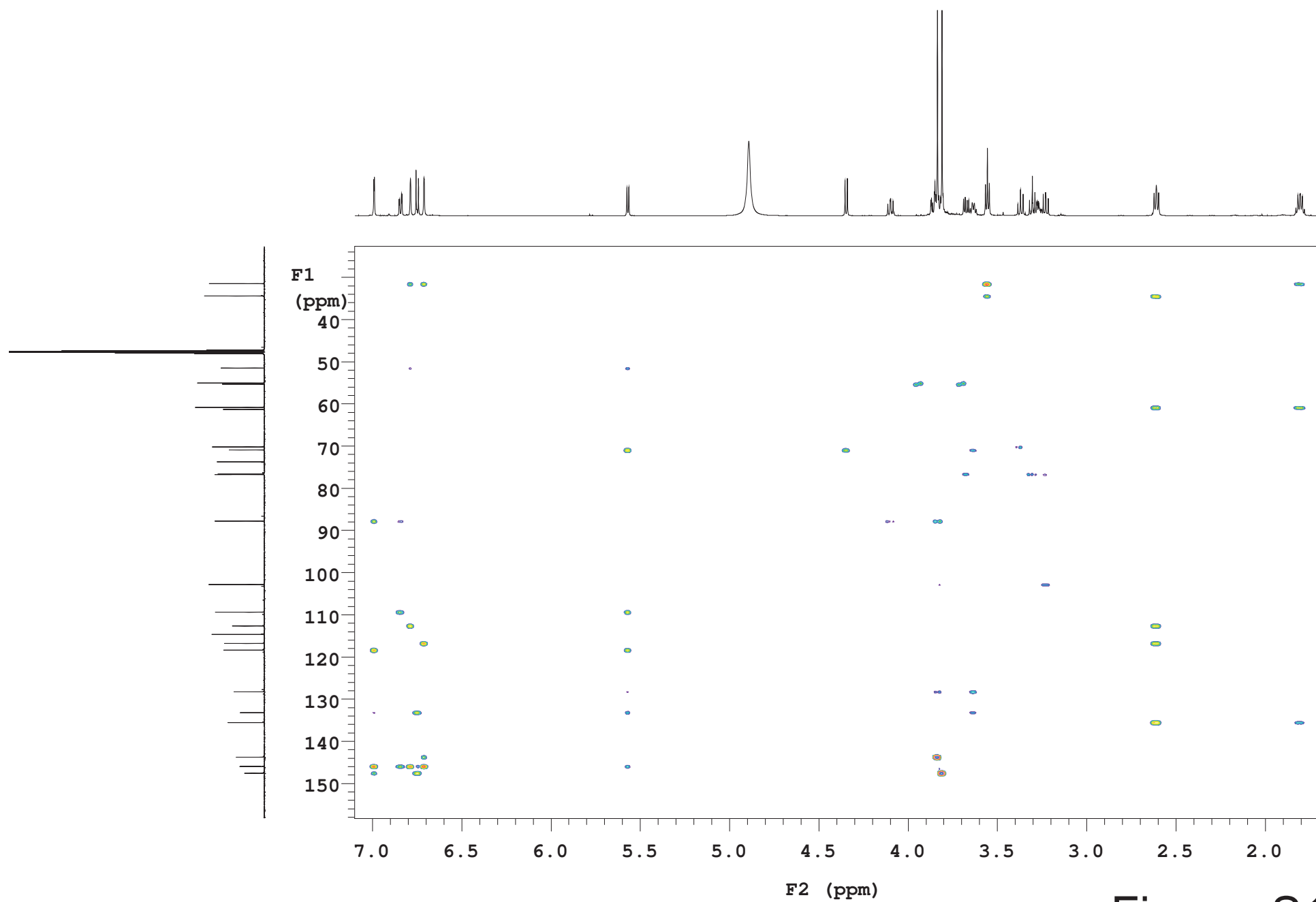


Figure. S1D

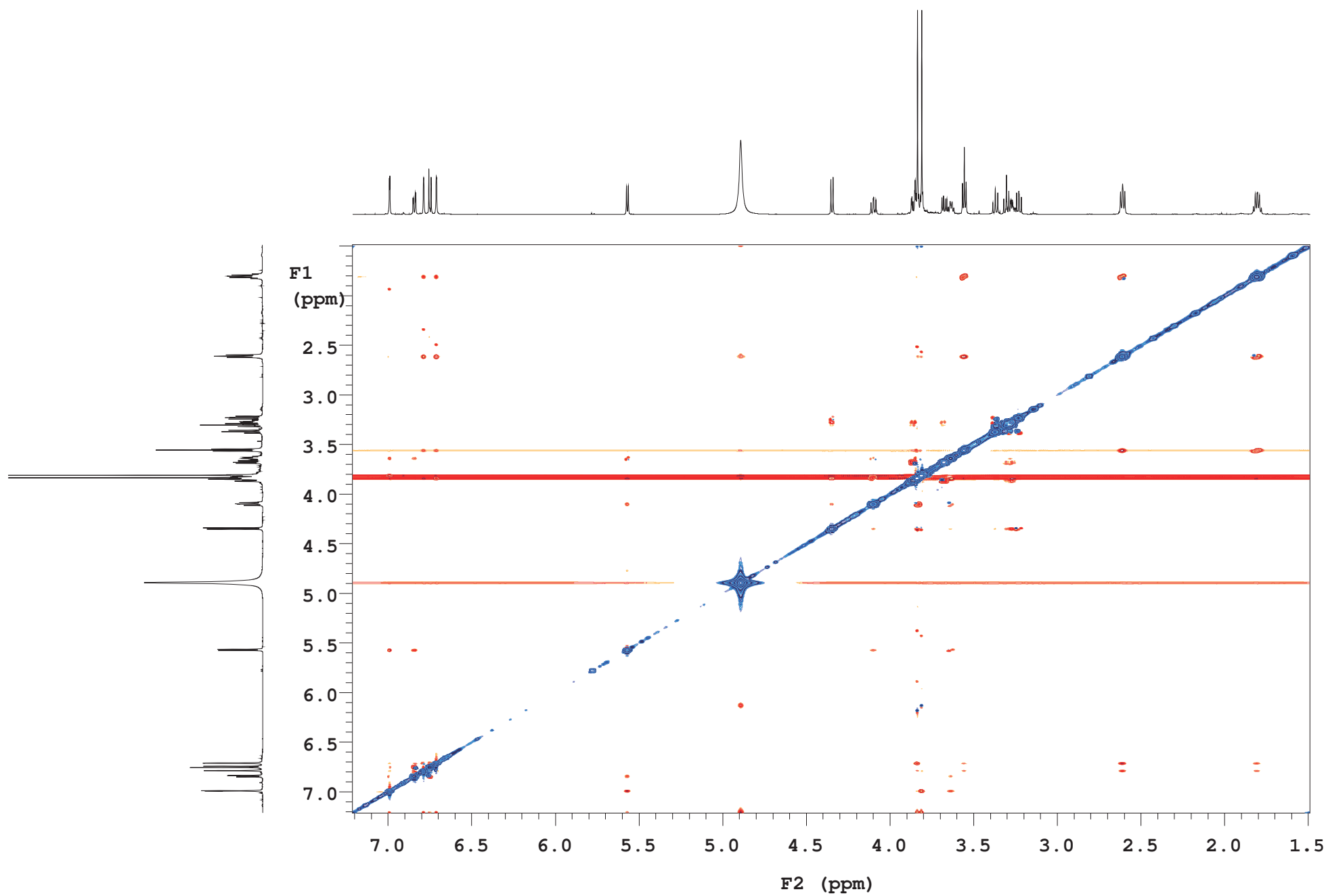


Figure. S1E

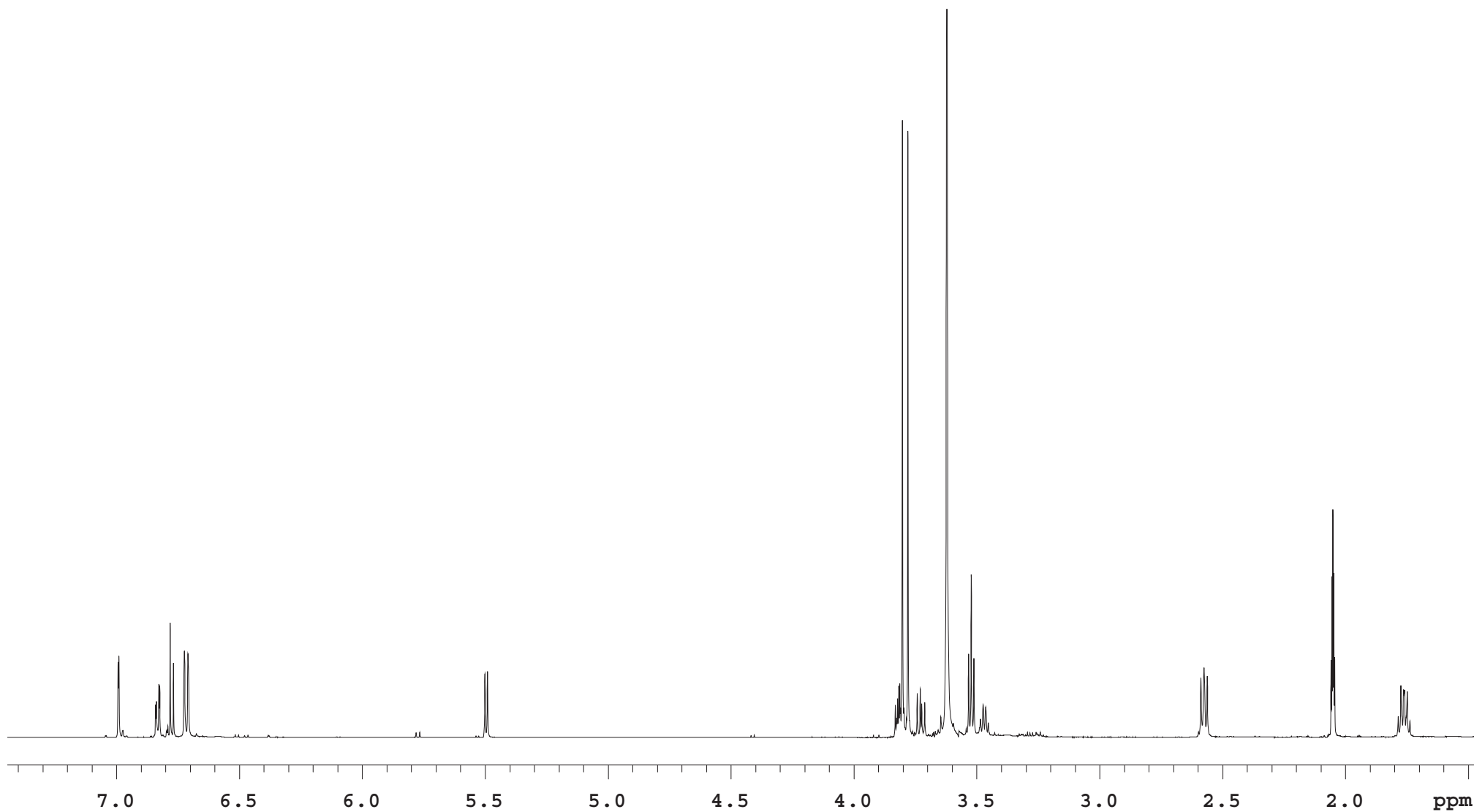


Figure. S2A

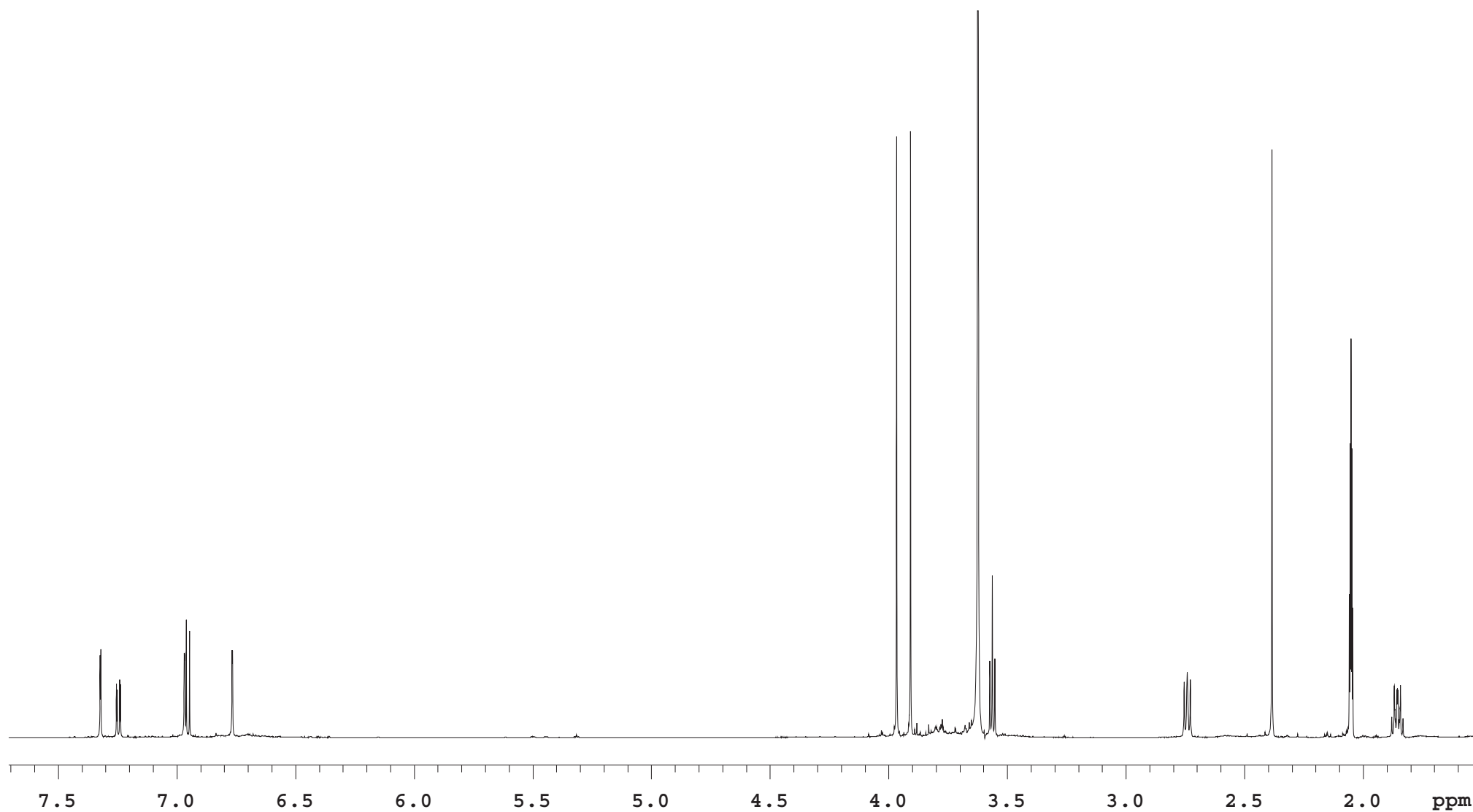


Figure. S2B

Rubuphenol (**11**)

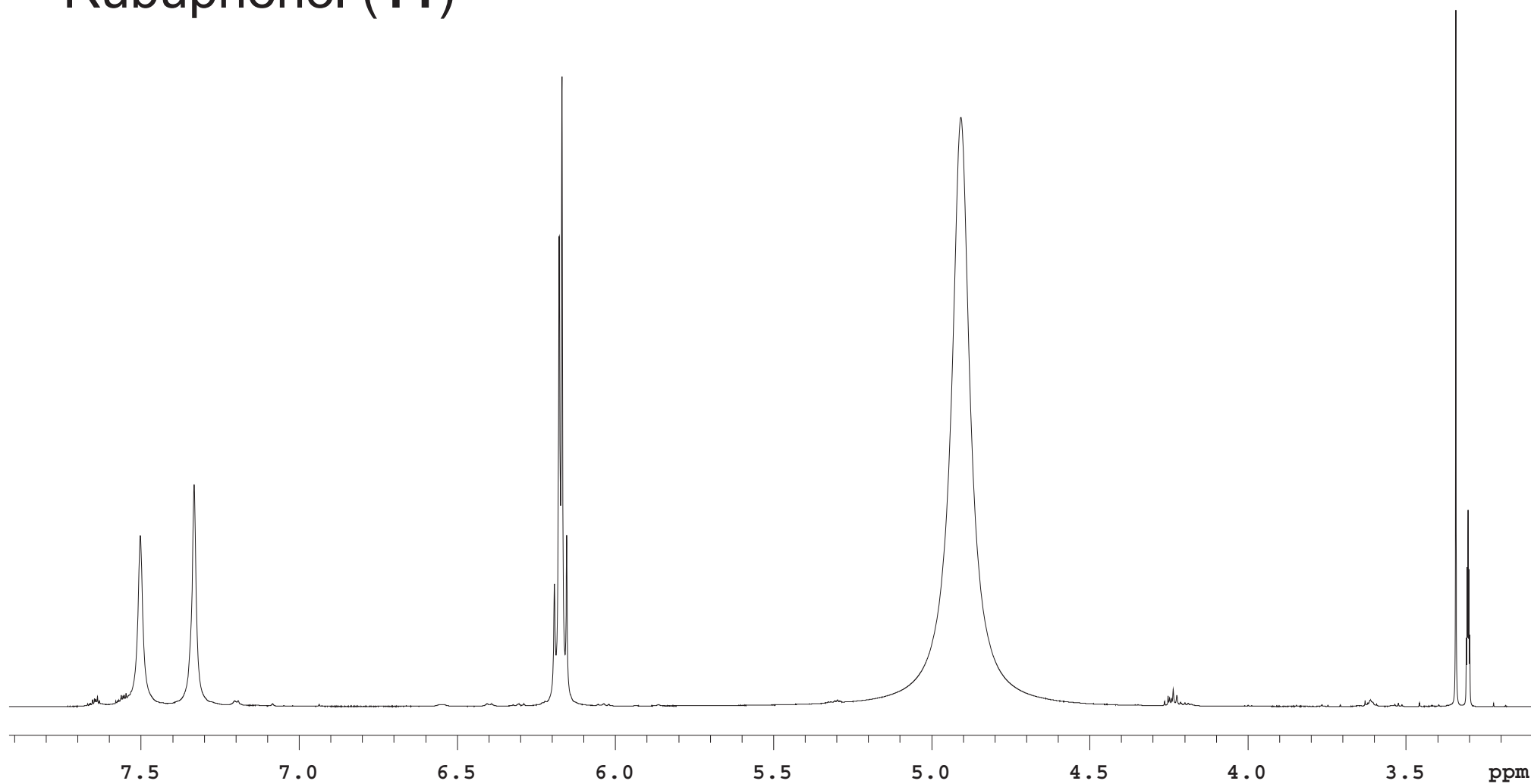


Figure. S3A

Rubuphenol (**11**)

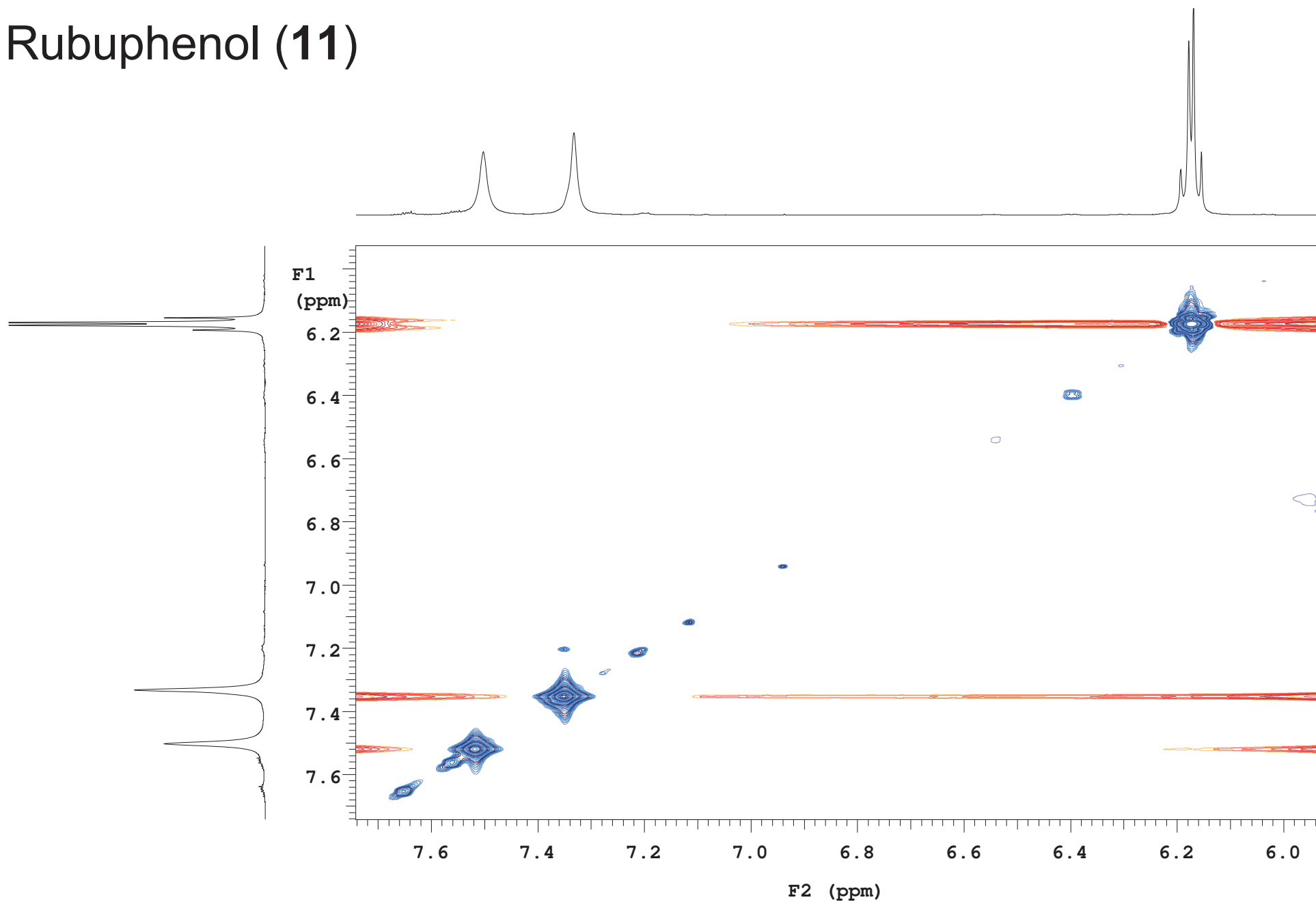


Figure. S3B

Eschweilenol A (12)

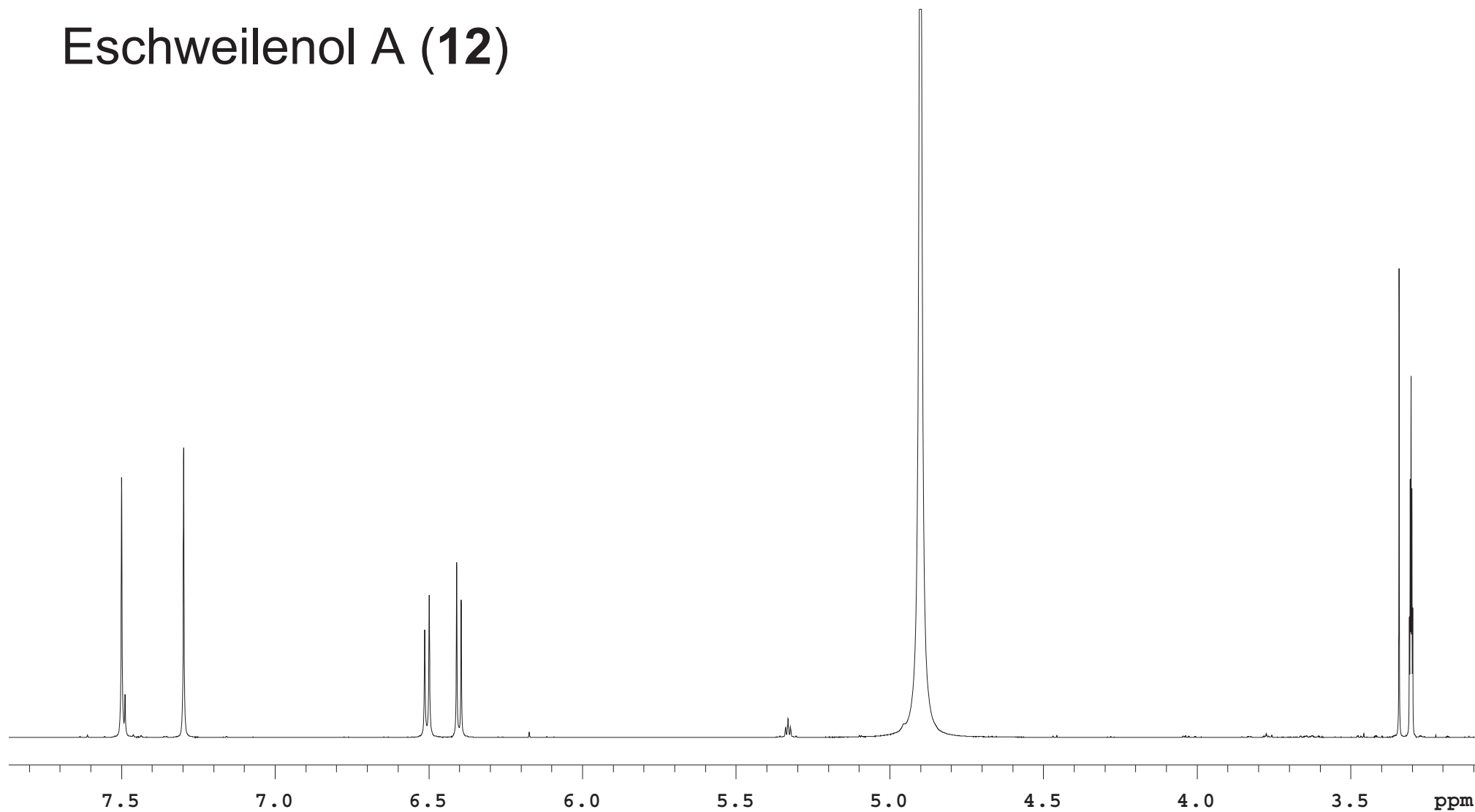


Figure. S3A

Eschweilenol A (12)

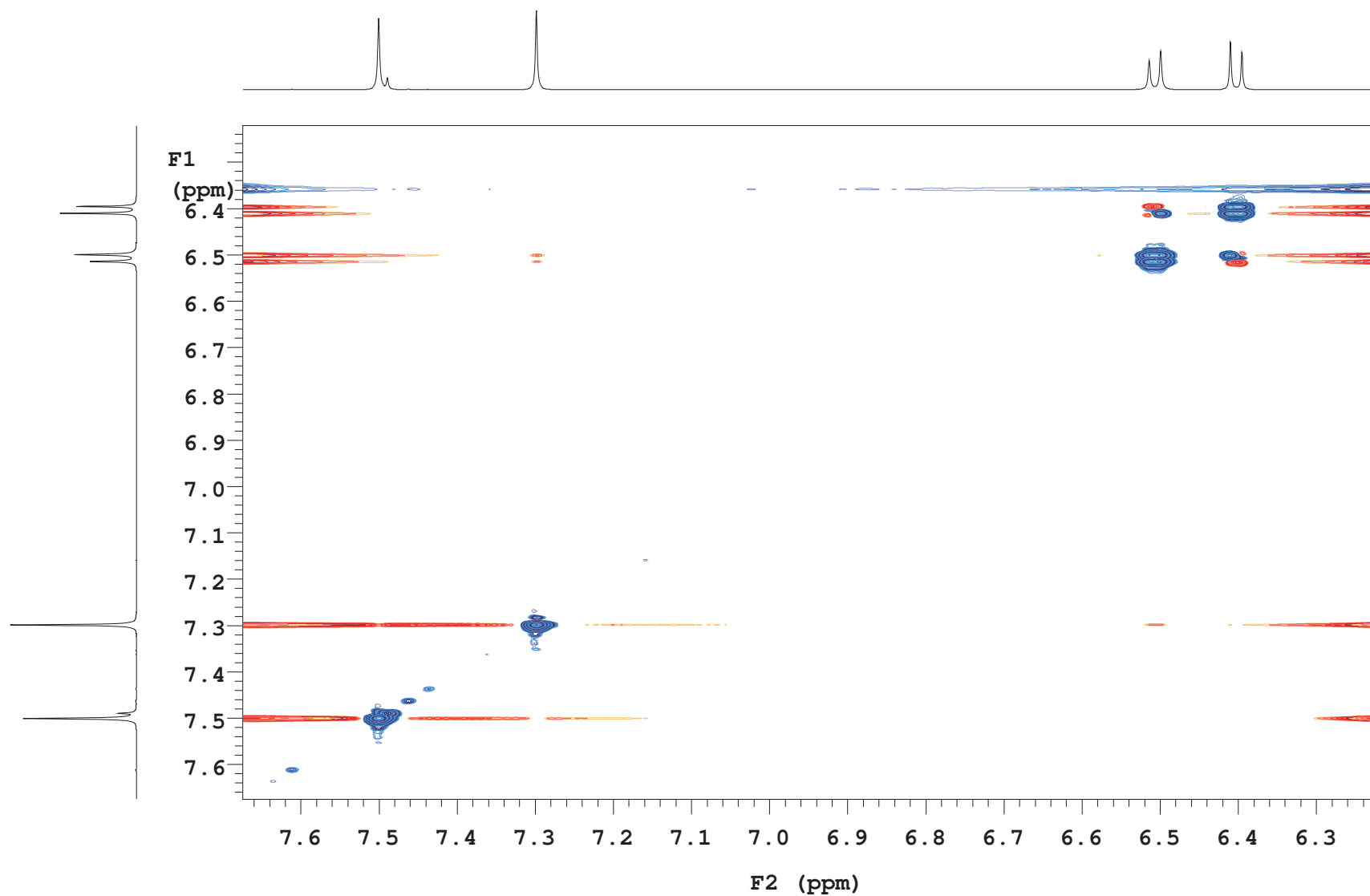


Figure. S3B

Compound **15**

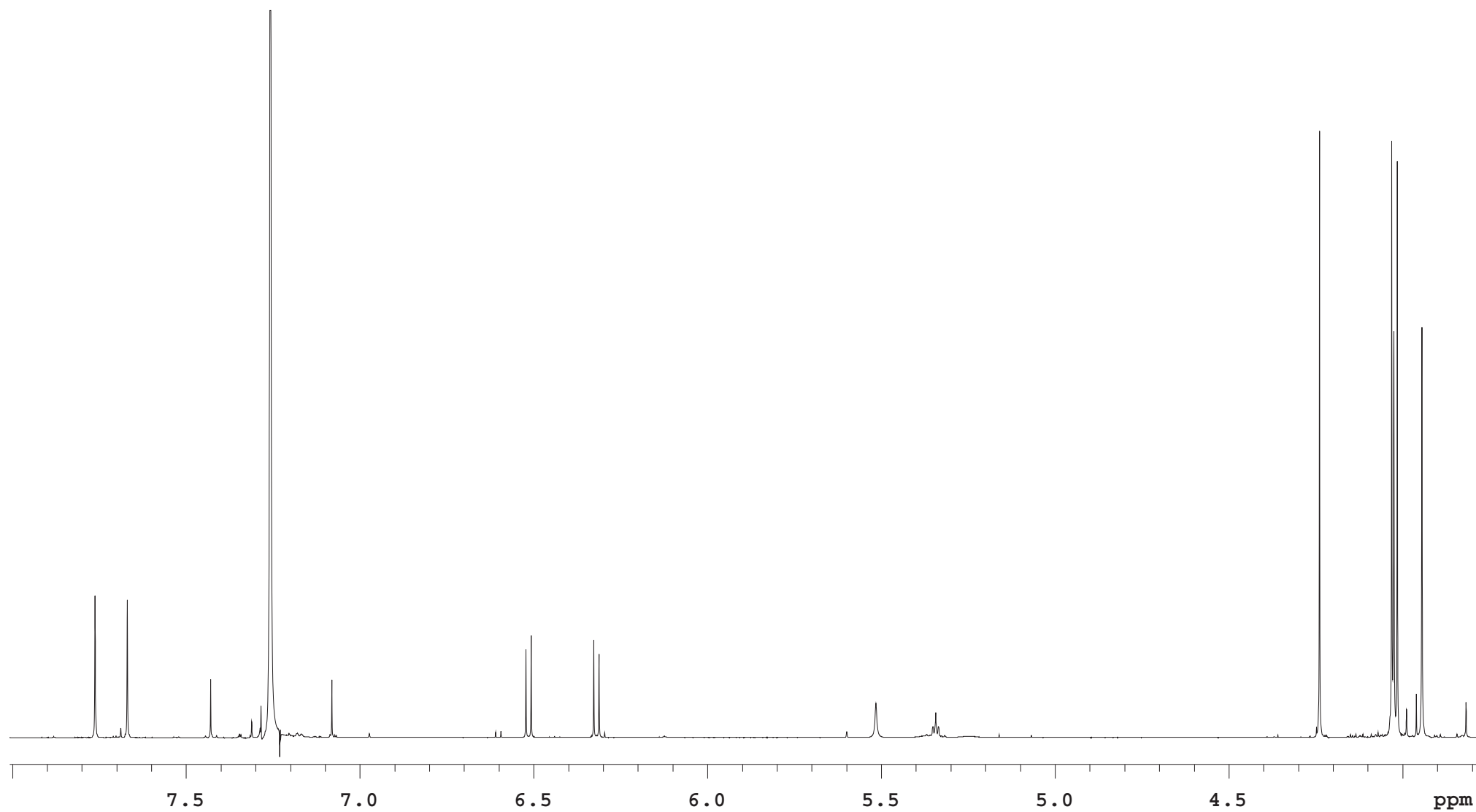


Figure. S4A

Compound 15

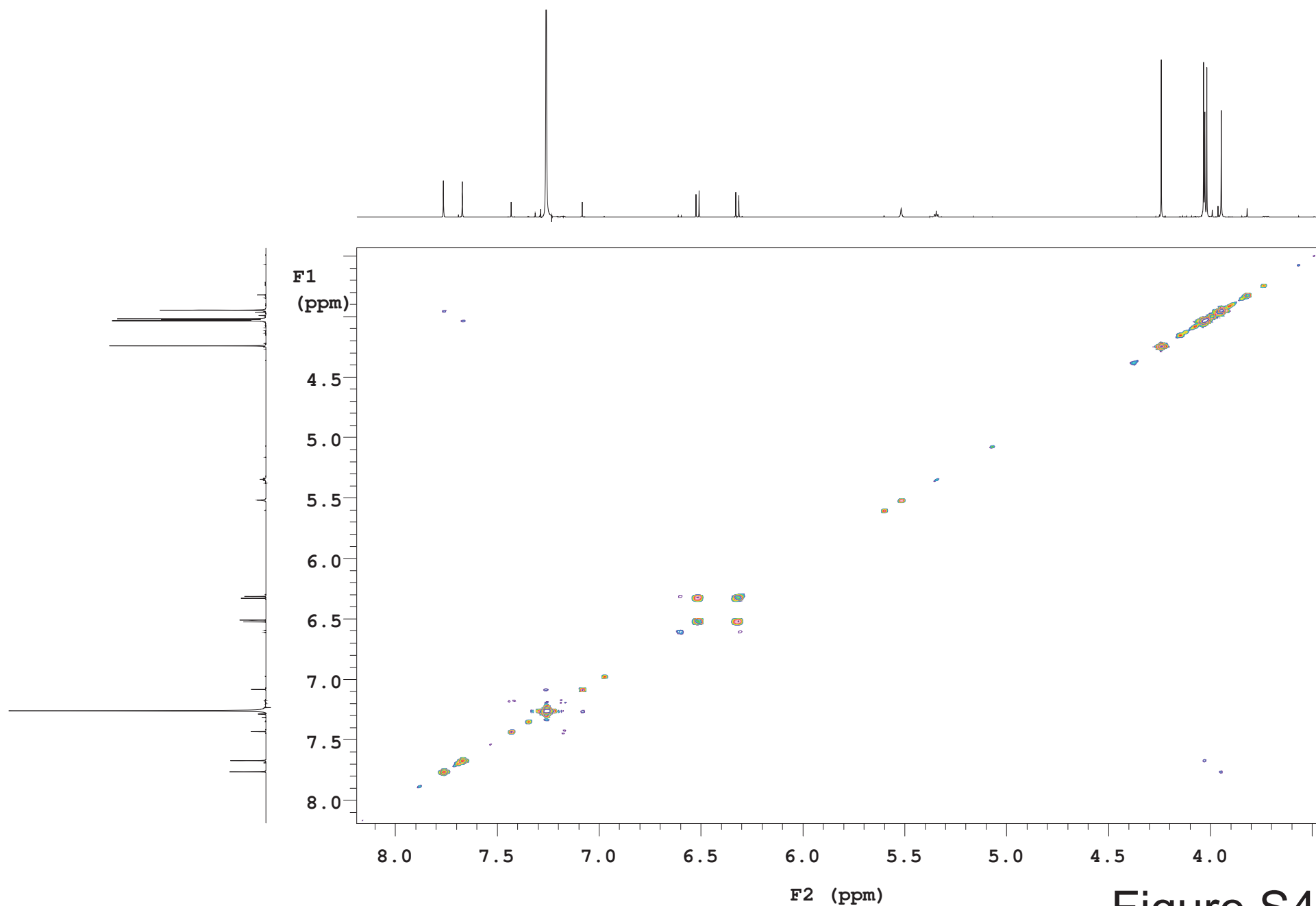


Figure.S4B

Compound 15

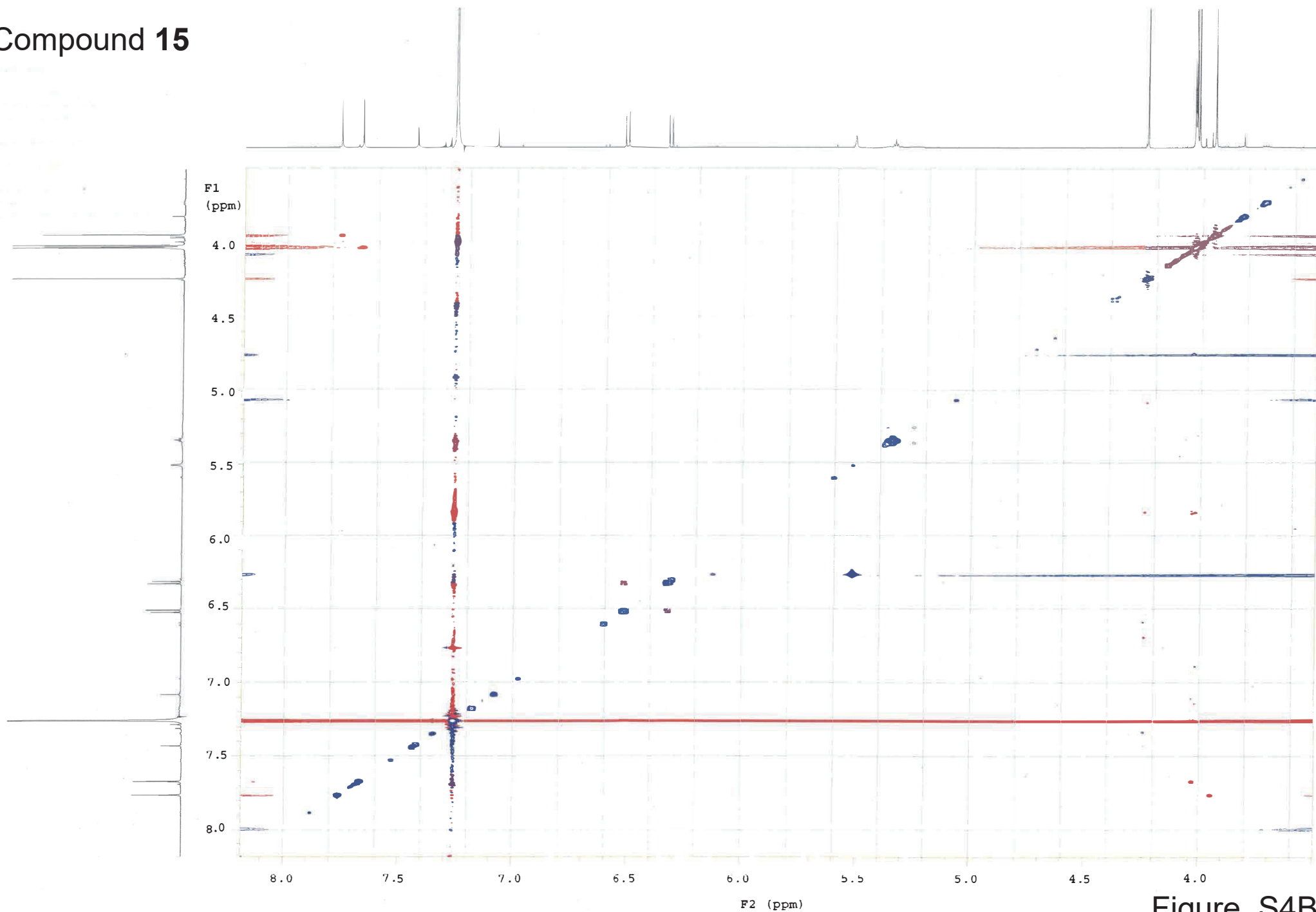


Figure. S4B

Compound **16**

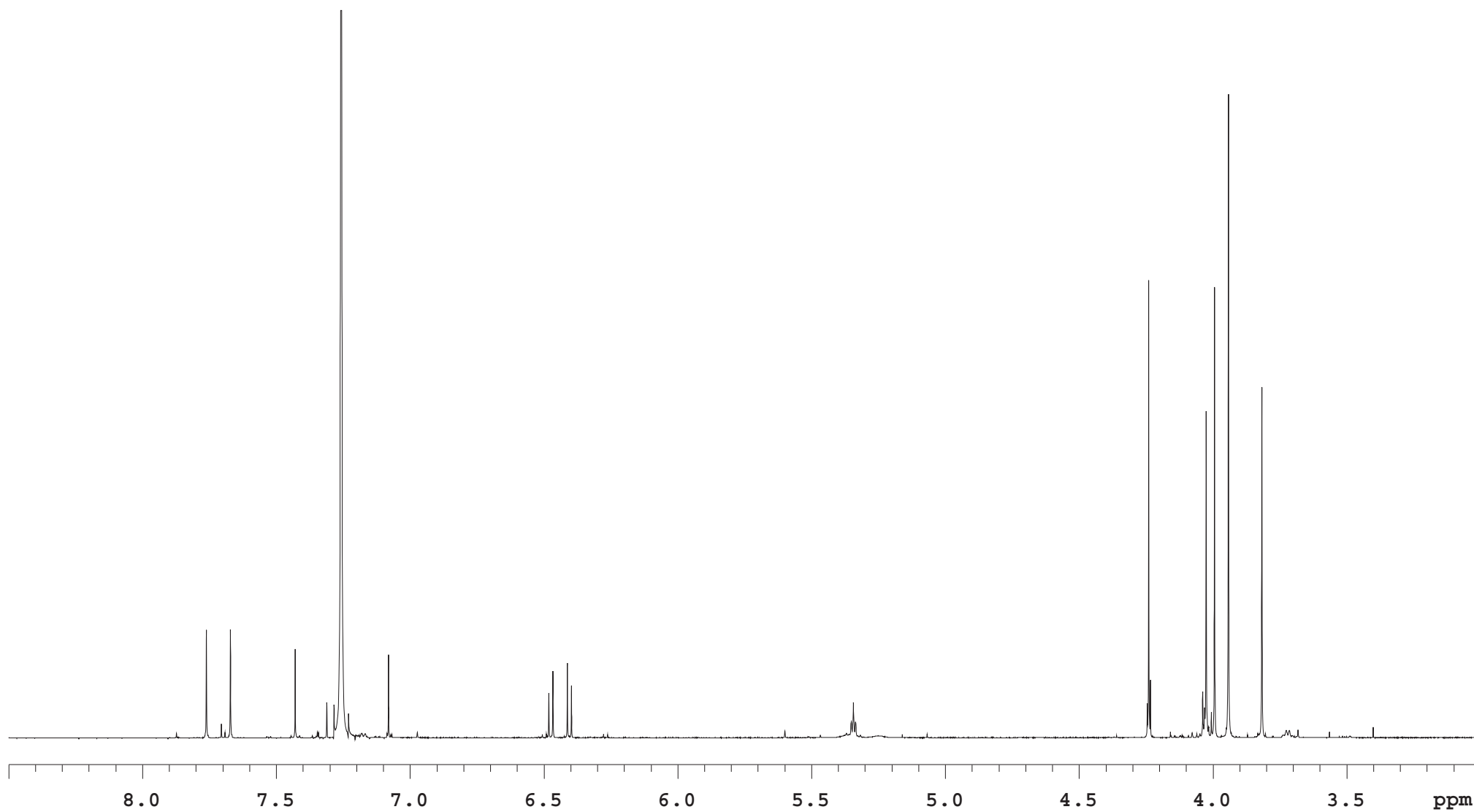


Figure. S4A

Compound 16

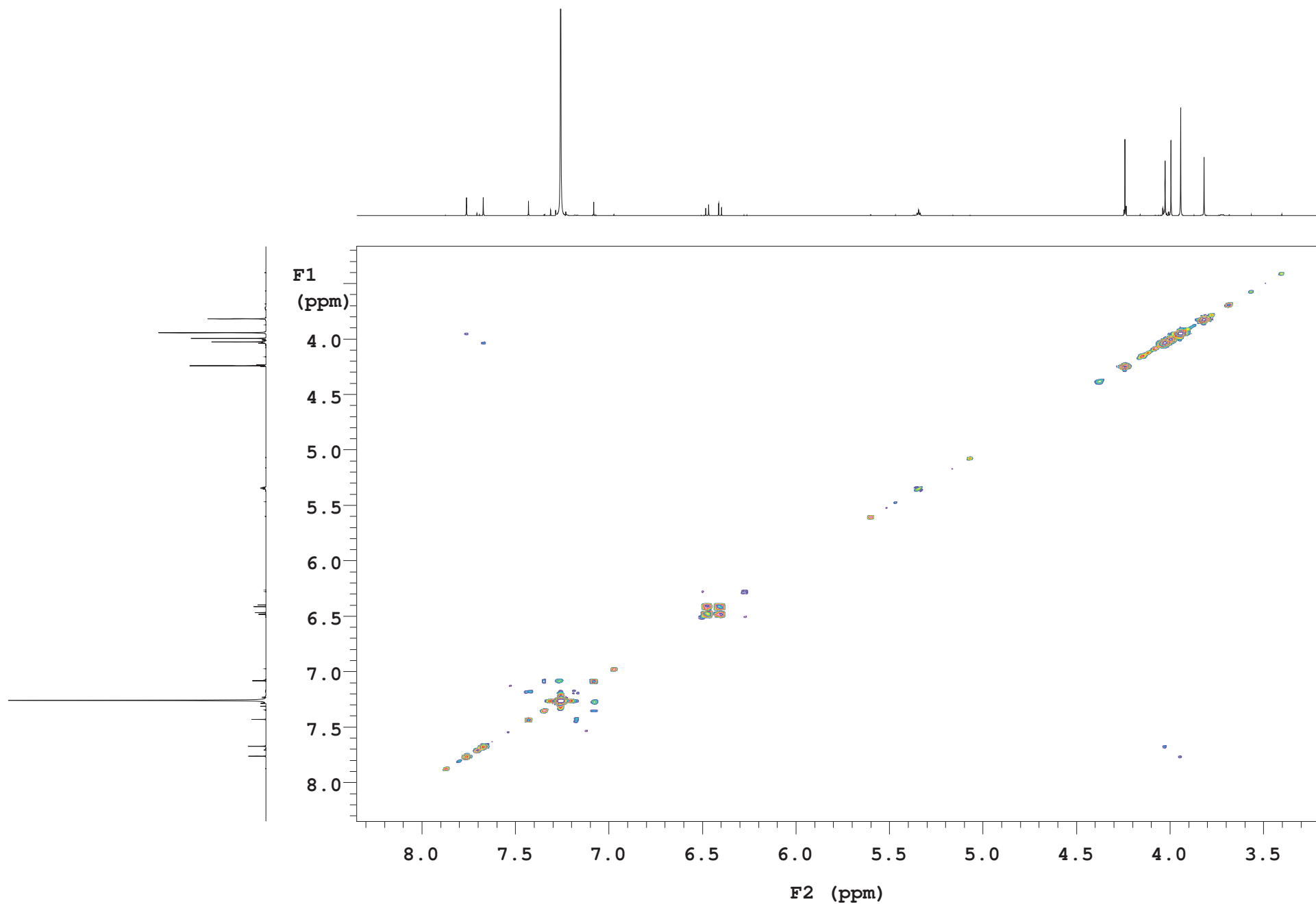


Figure. S4B

Compound 16

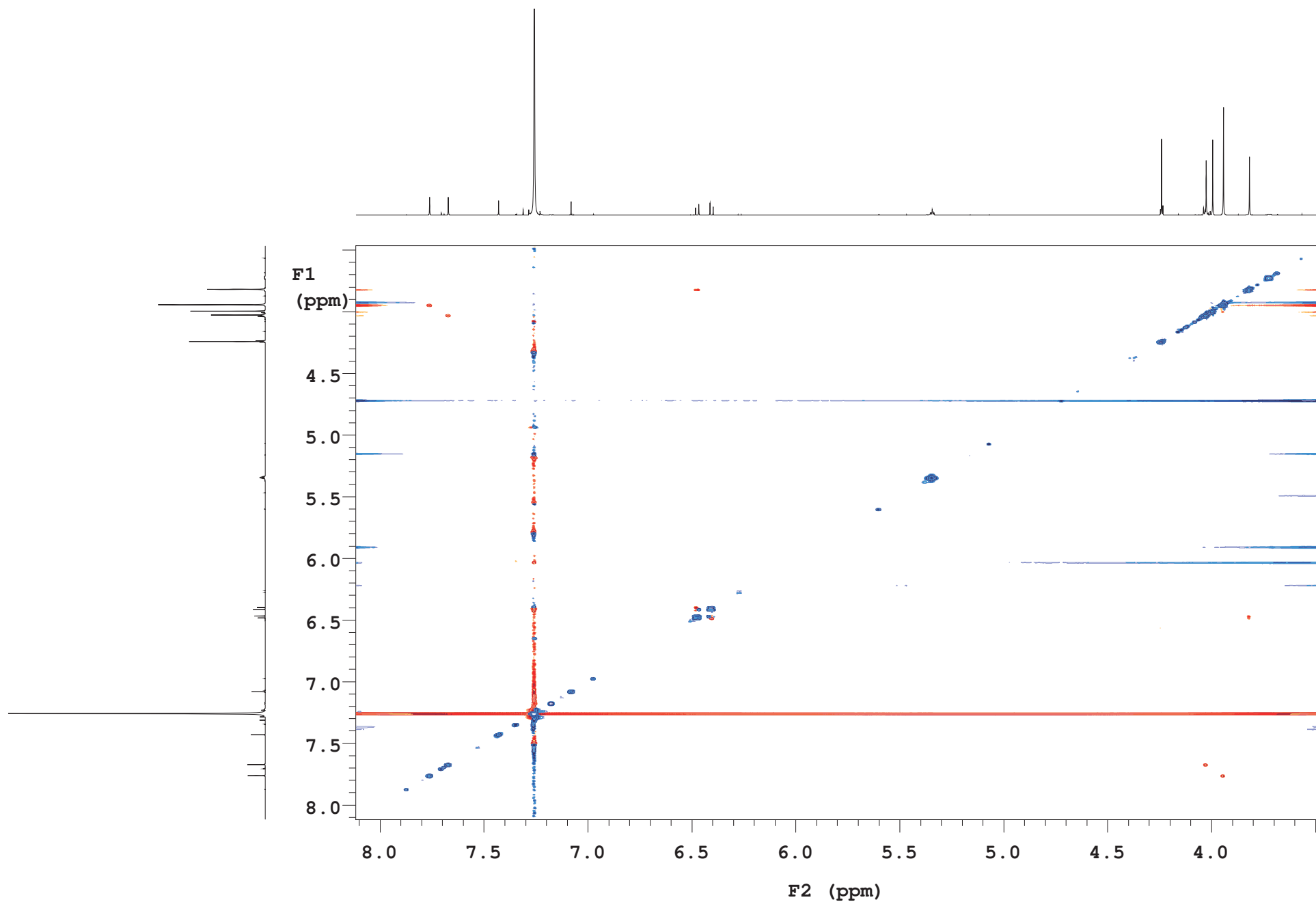


Figure. S4C

Compound **17**

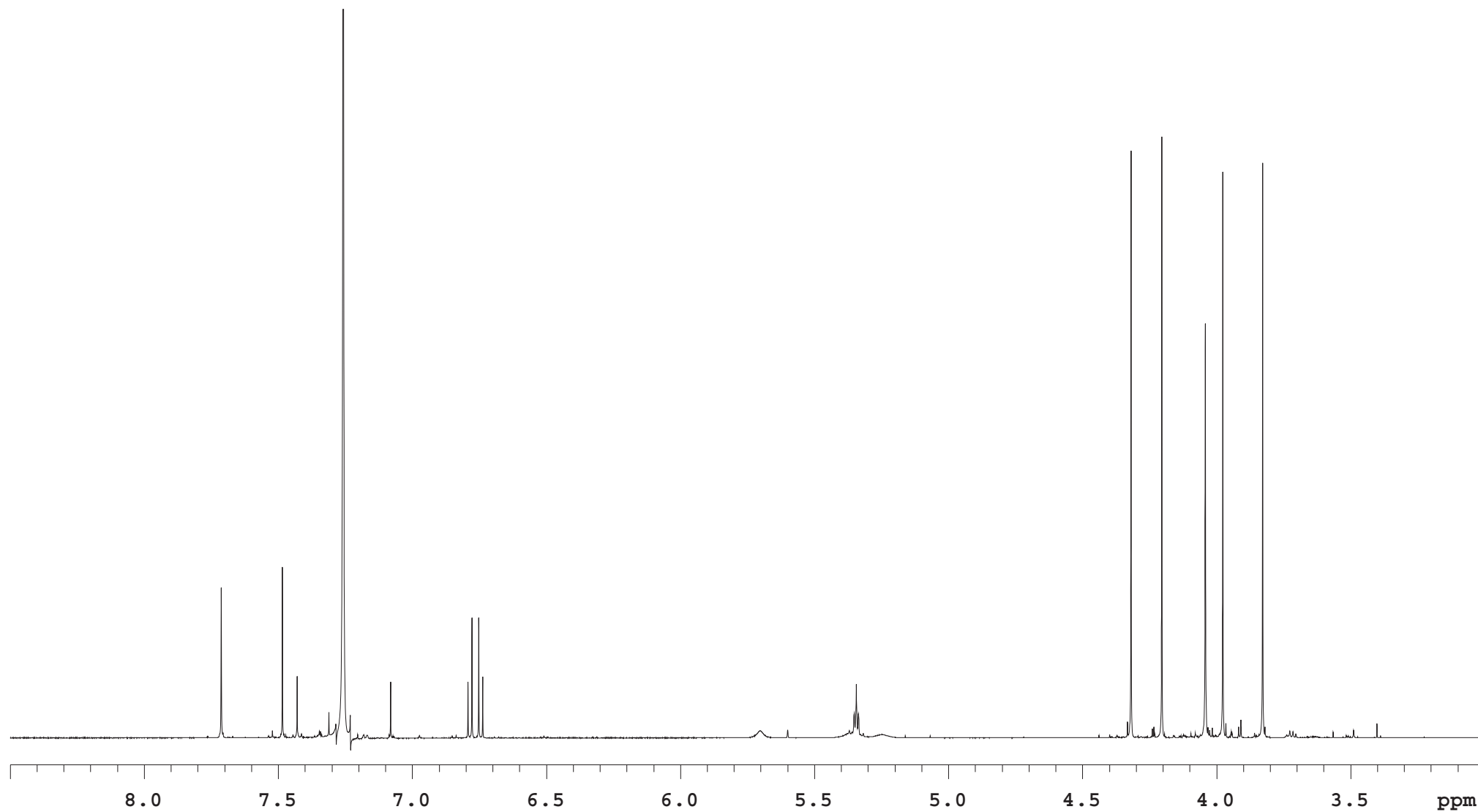


Figure. S4A

Compound 17

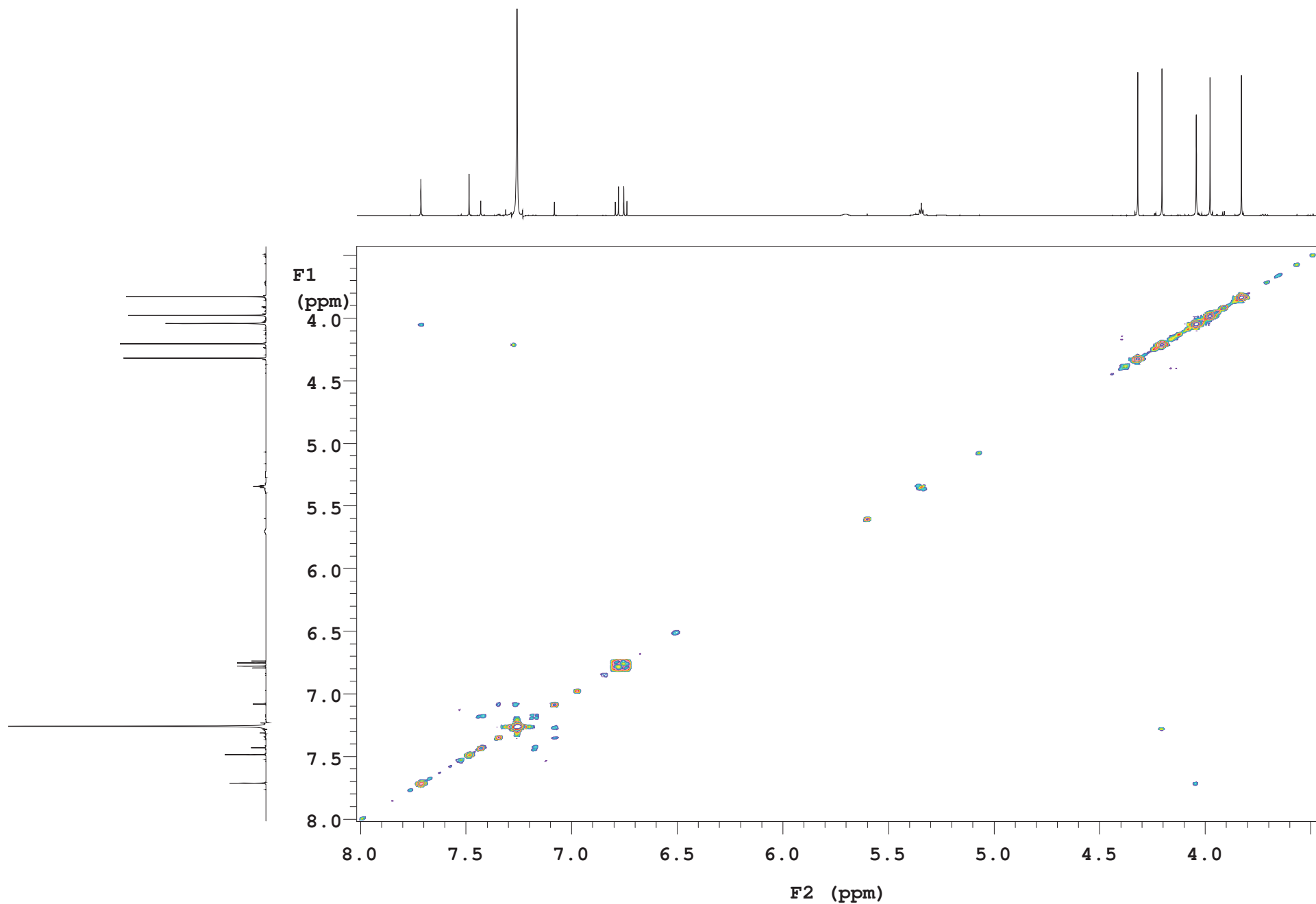


Figure. S4B

Compound 17

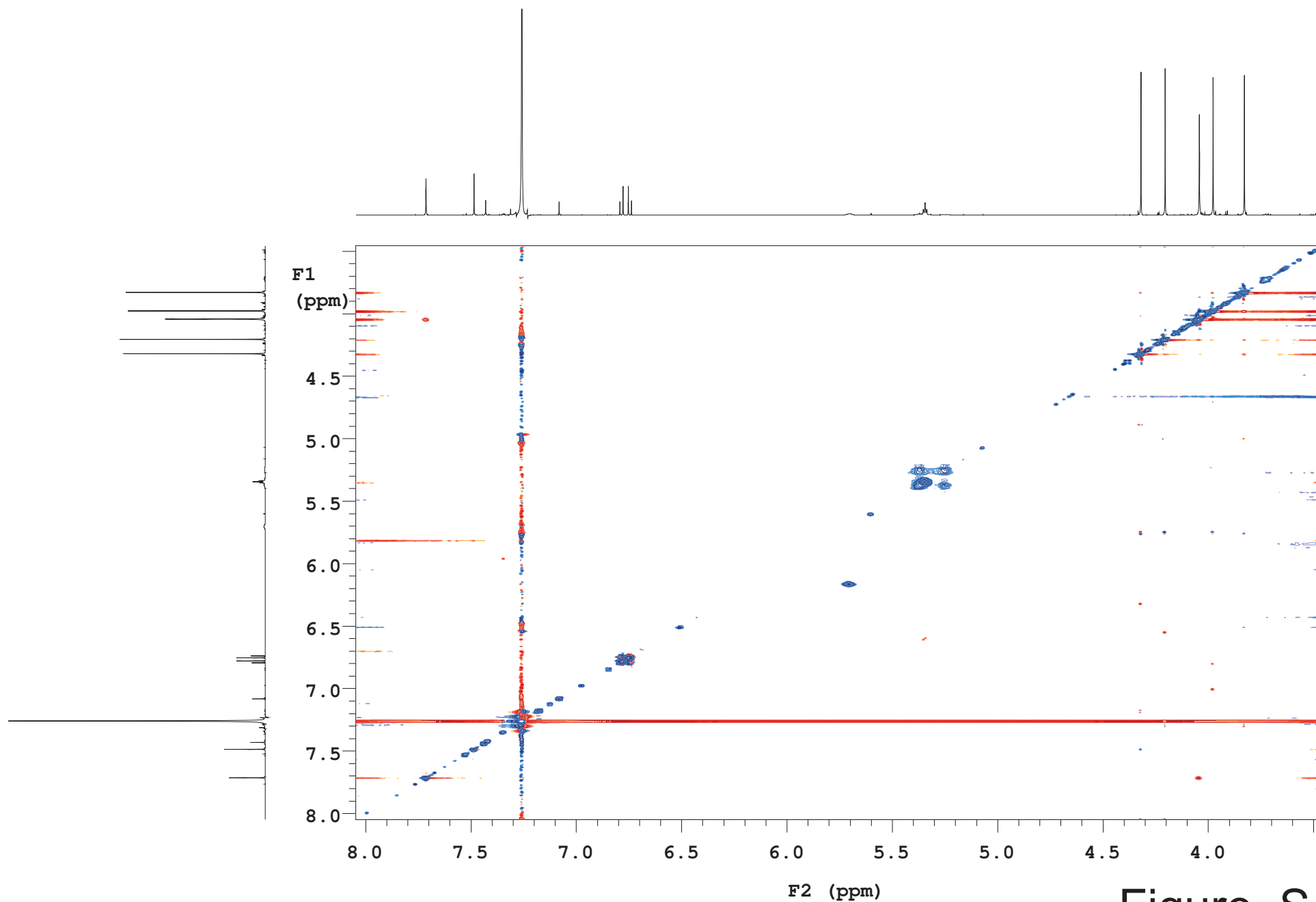


Figure. S4C

Compound **18**

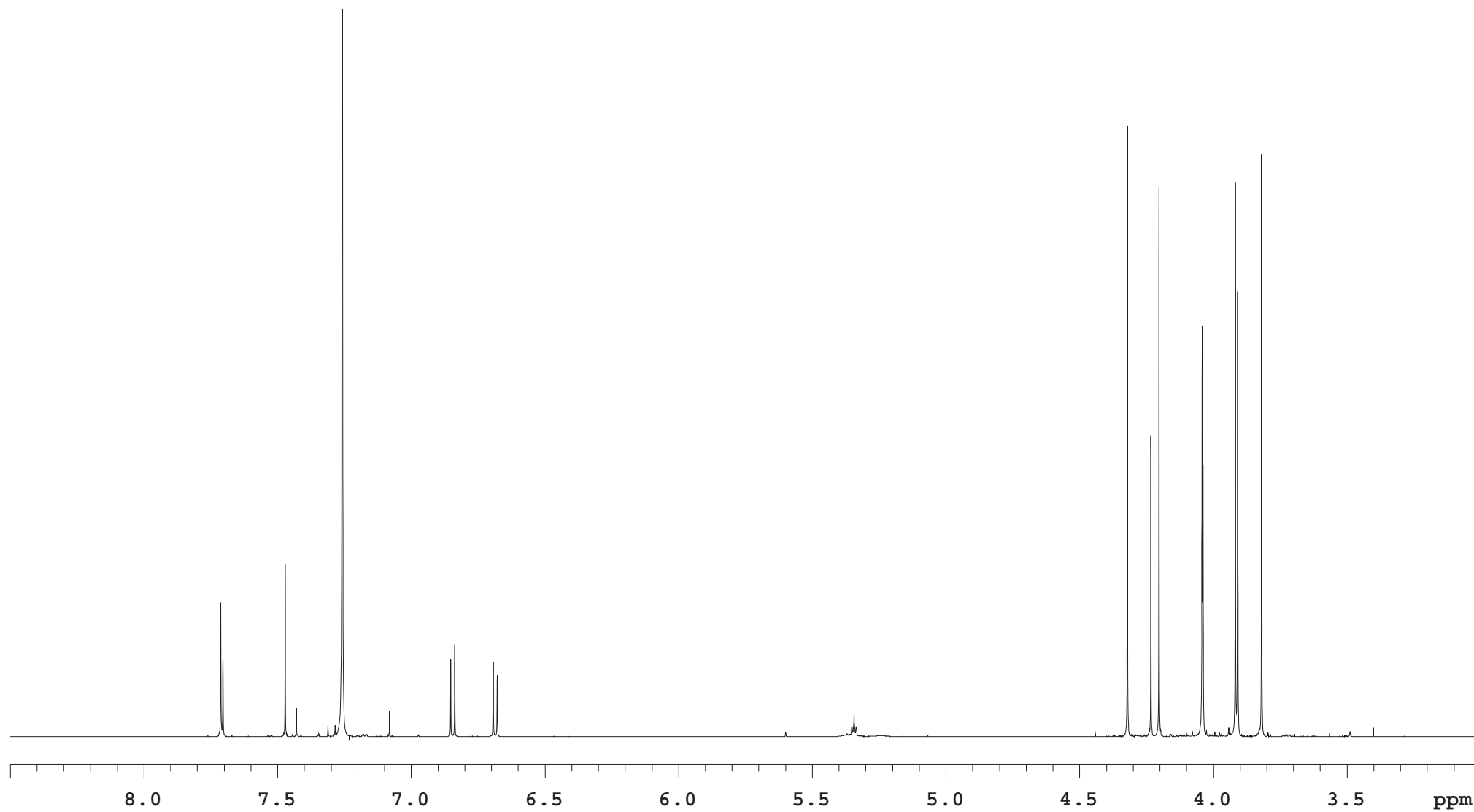


Figure. S4A

Compound 18

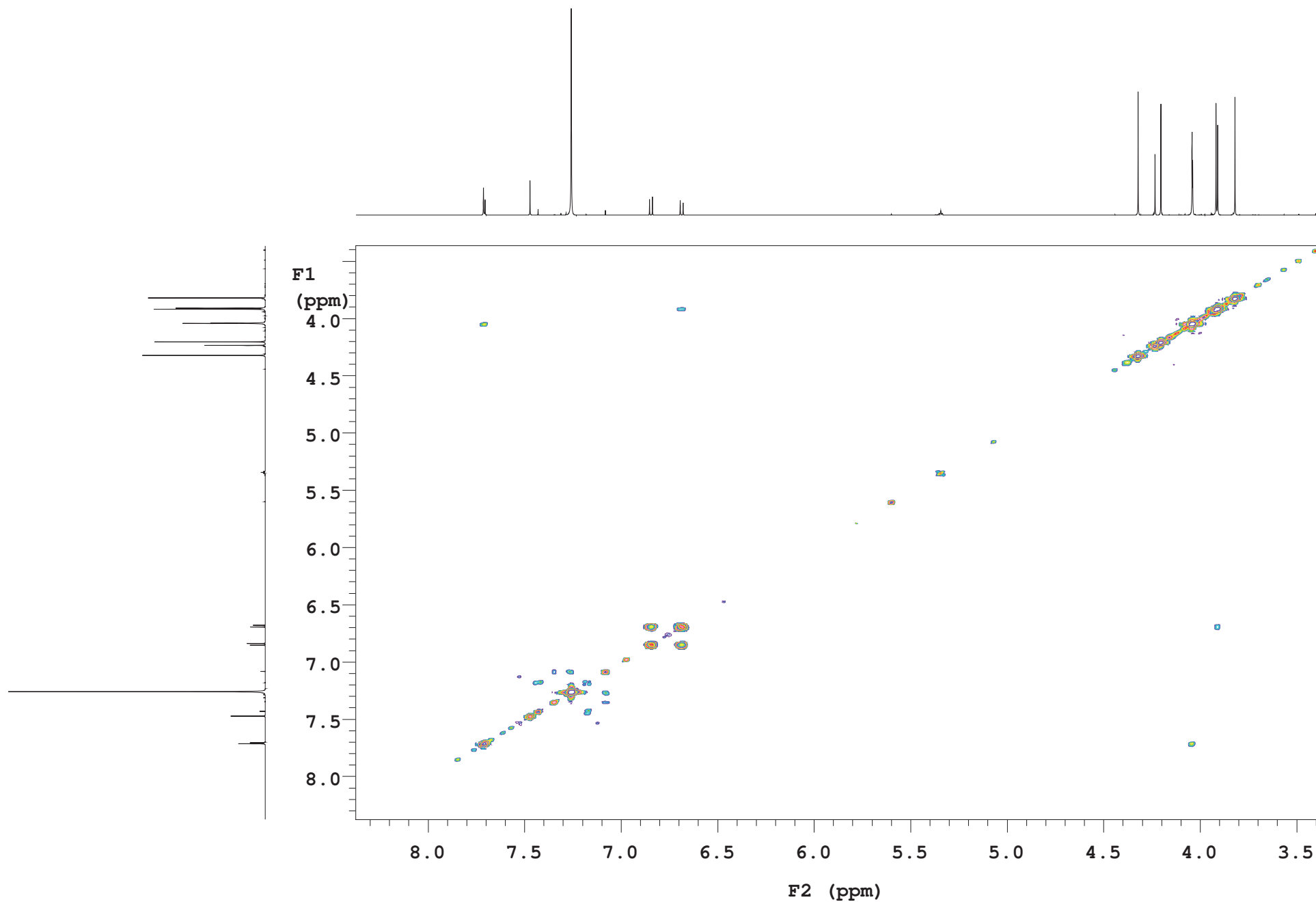


Figure. S4B

Compound 18

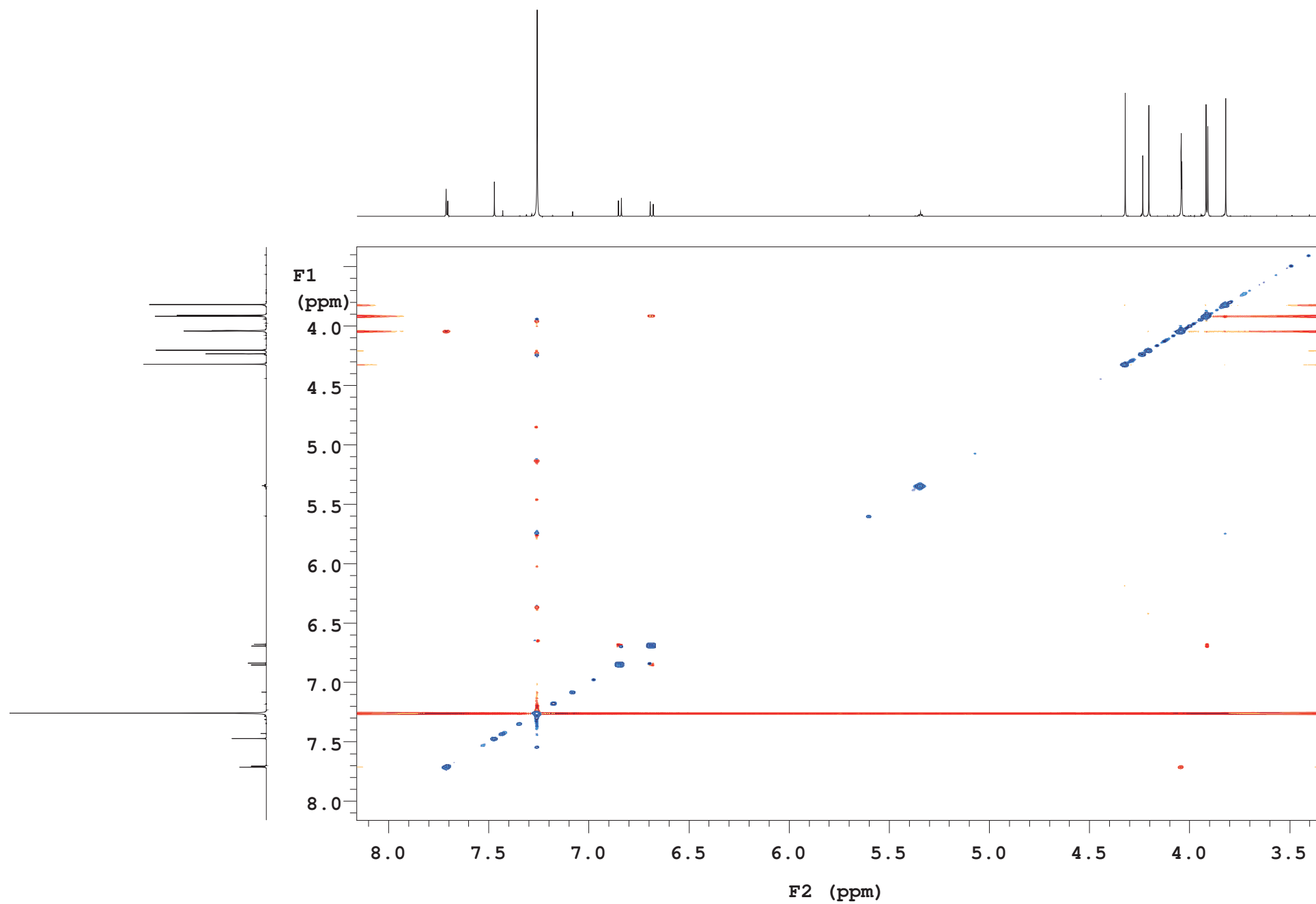


Figure. S4C