

*Supplementary Materials*

**Essential Oils from Bolivia. XV. Herzogole, an Original Monoterpene Benzodioxole from an Essential oil from *Pentacalia herzogii* (Cabrera) Cuatrec.**

Alexis St-Gelais\*

Laboratoire Phytochemia, 628, Boulevard du Saguenay Ouest, Saguenay, (Québec) Canada, G7J 1H4

Eliana M. Maldonado<sup>1</sup>, Gloria Saavedra<sup>1</sup>, Samuel Siles-Alvarado<sup>2</sup>

<sup>1</sup>Centro de Tecnología Agroindustrial, Universidad Mayor de San Simón, Cochabamba, 992, Bolivia

<sup>2</sup>Centro Especializado de Instrumentación Analítica, Universidad Mayor de San Simón, Cochabamba, 992, Bolivia

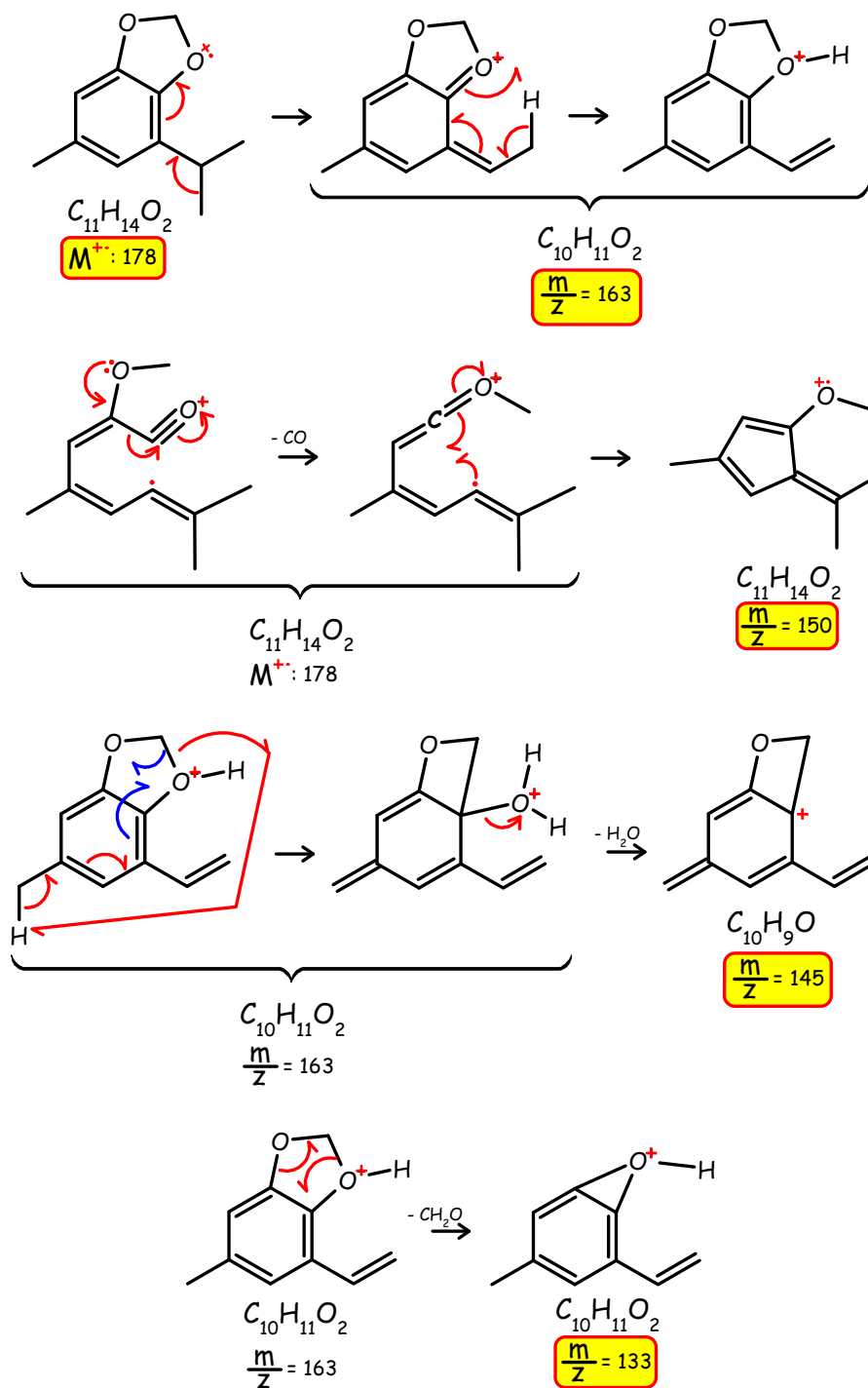
Jérôme Alsarraf, Guy Collin, André Pichette

Centre de recherche sur la Boréale (CREB), Laboratoire d'analyse et de séparation des essences végétales (LASEVE), Département des sciences fondamentales, Université du Québec à Chicoutimi, Saguenay, G7H 2B1, QC, Canada,

**Table of contents**

Figure S1. Fragmentation Pattern of Herzogole <b>1</b> .....	2
Figure S2. NRM spectra of herzogole <b>1</b> .....	4
Figure S3. Enamine certificate of analysis.....	11

Figure S1. Fragmentation Pattern of Herzogole 1



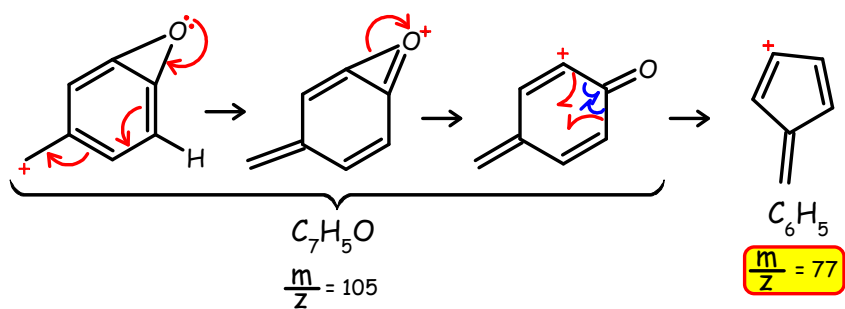
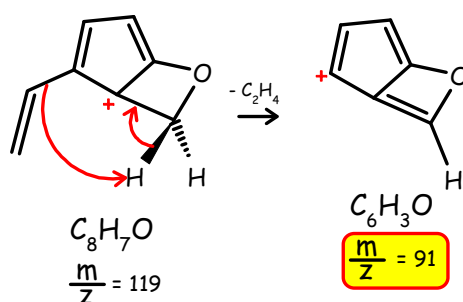
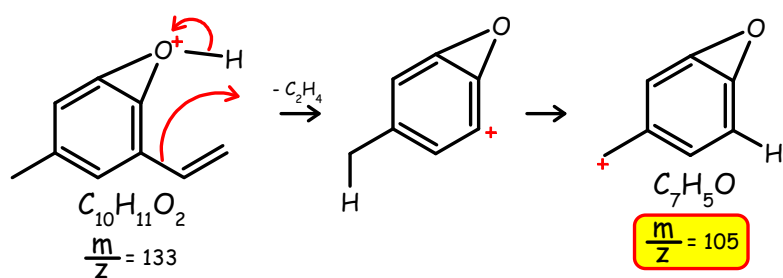
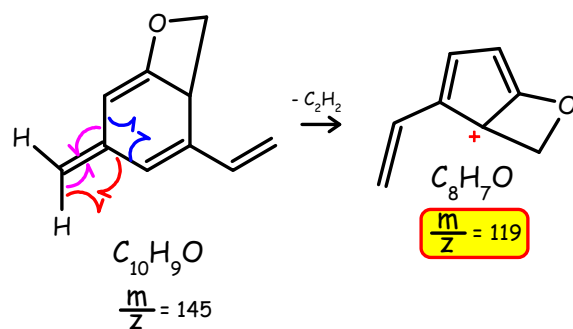
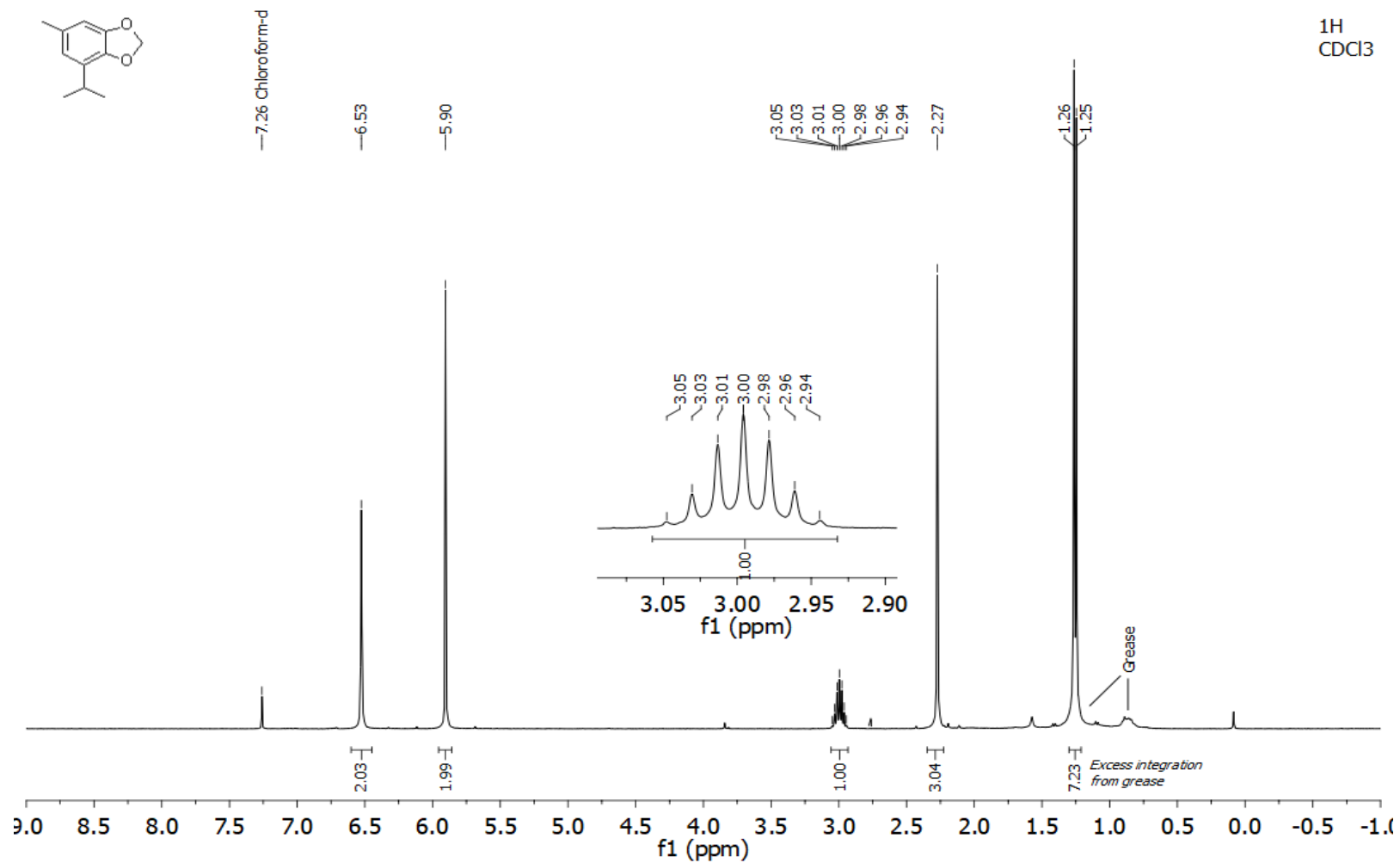
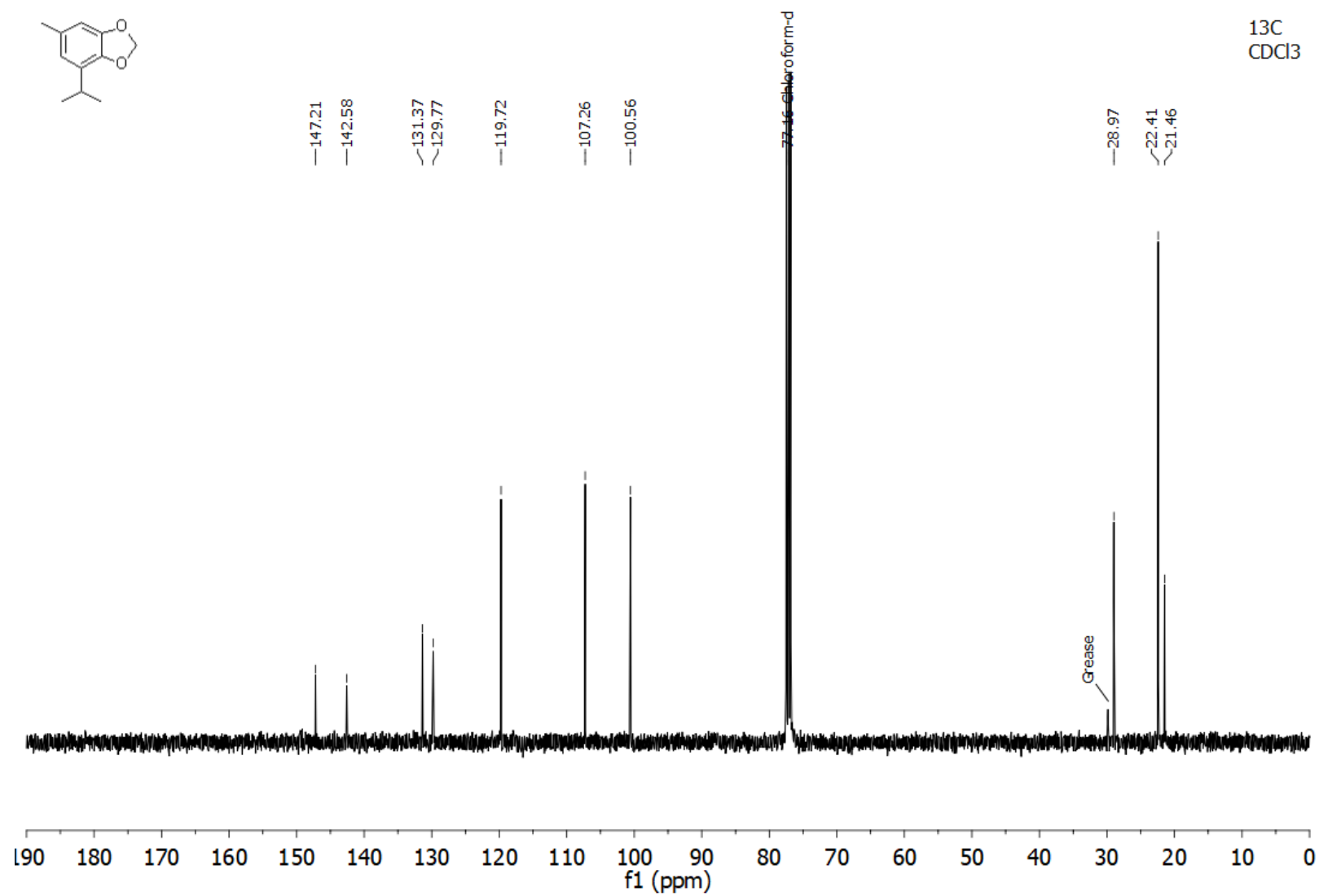
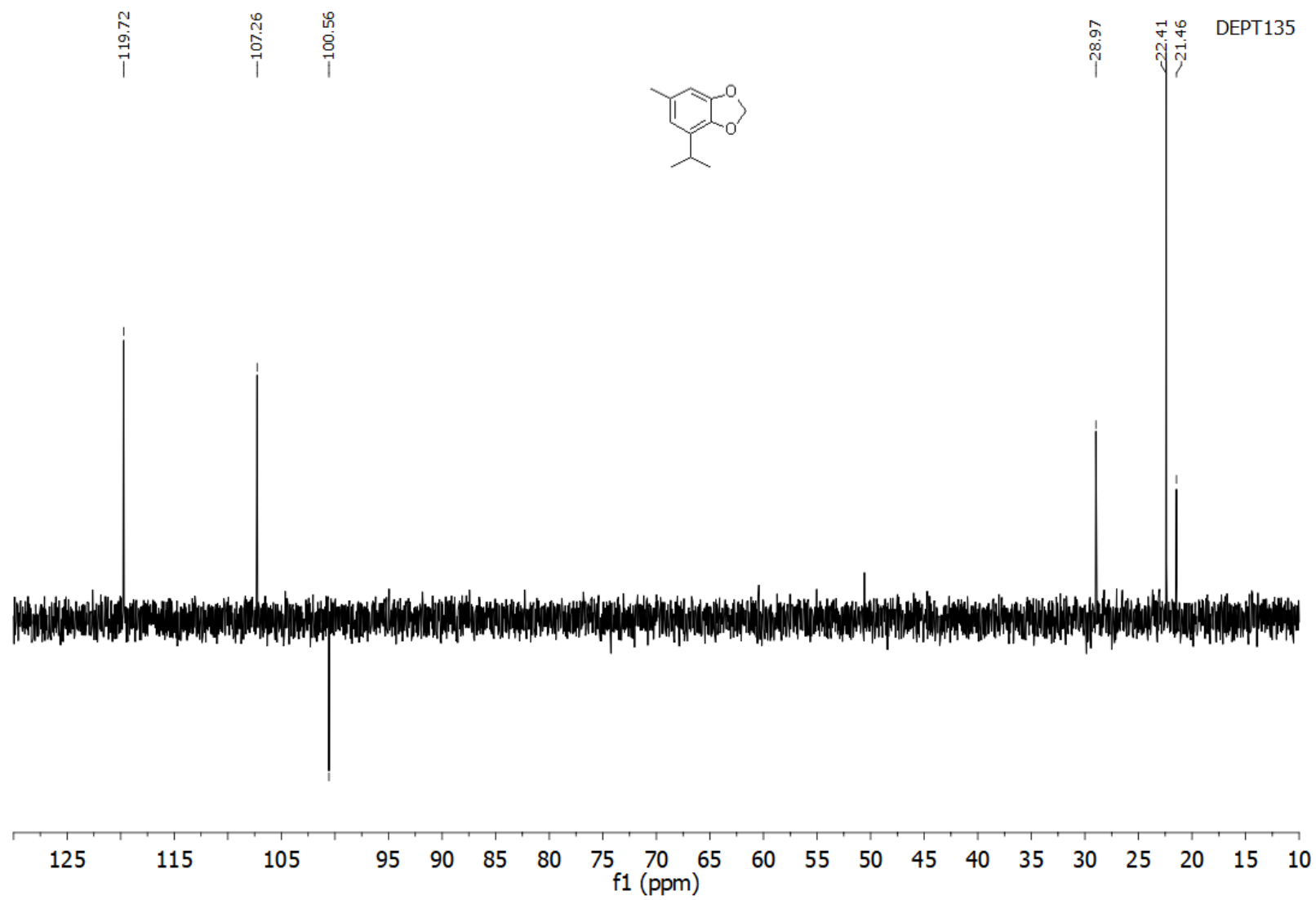
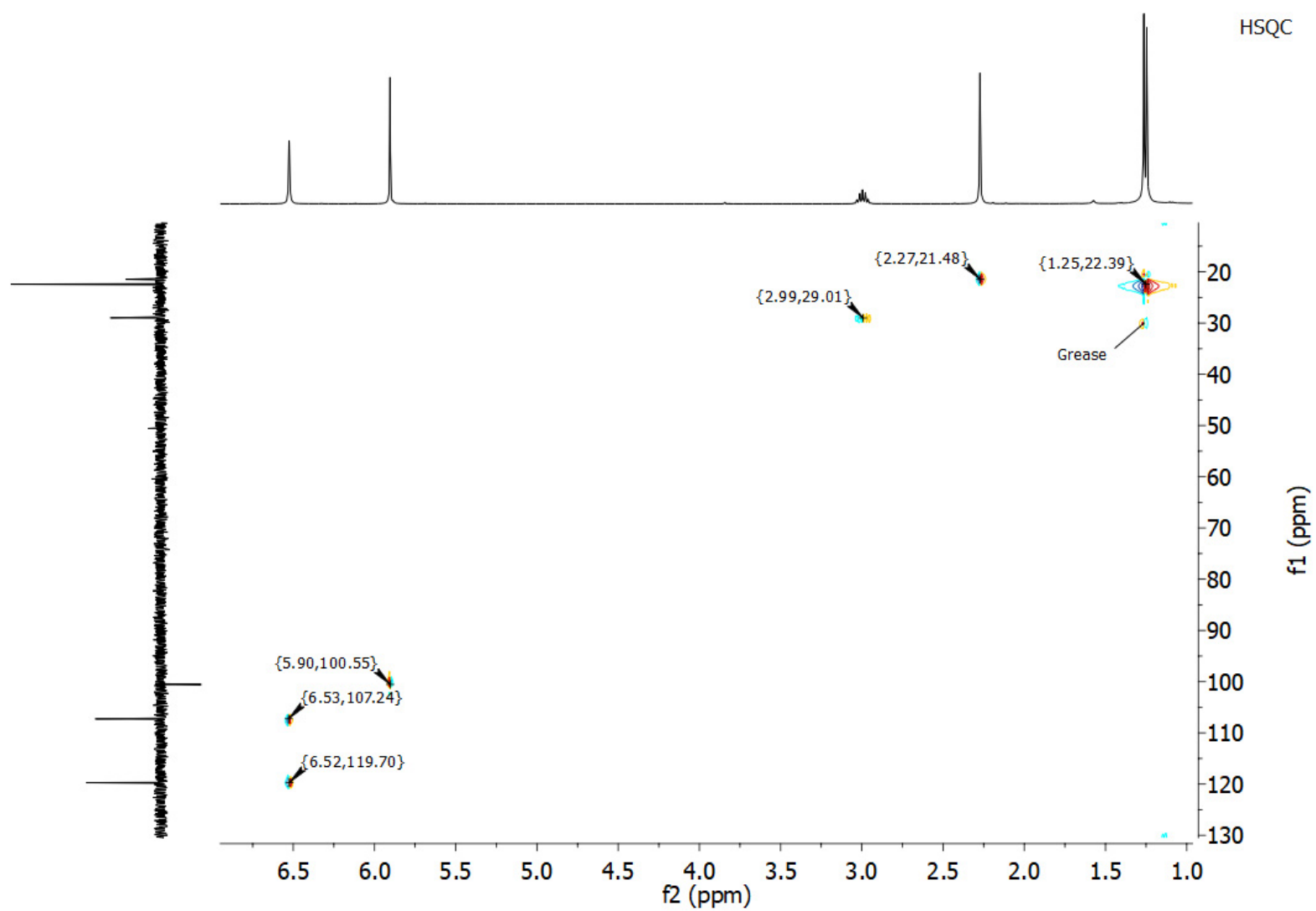


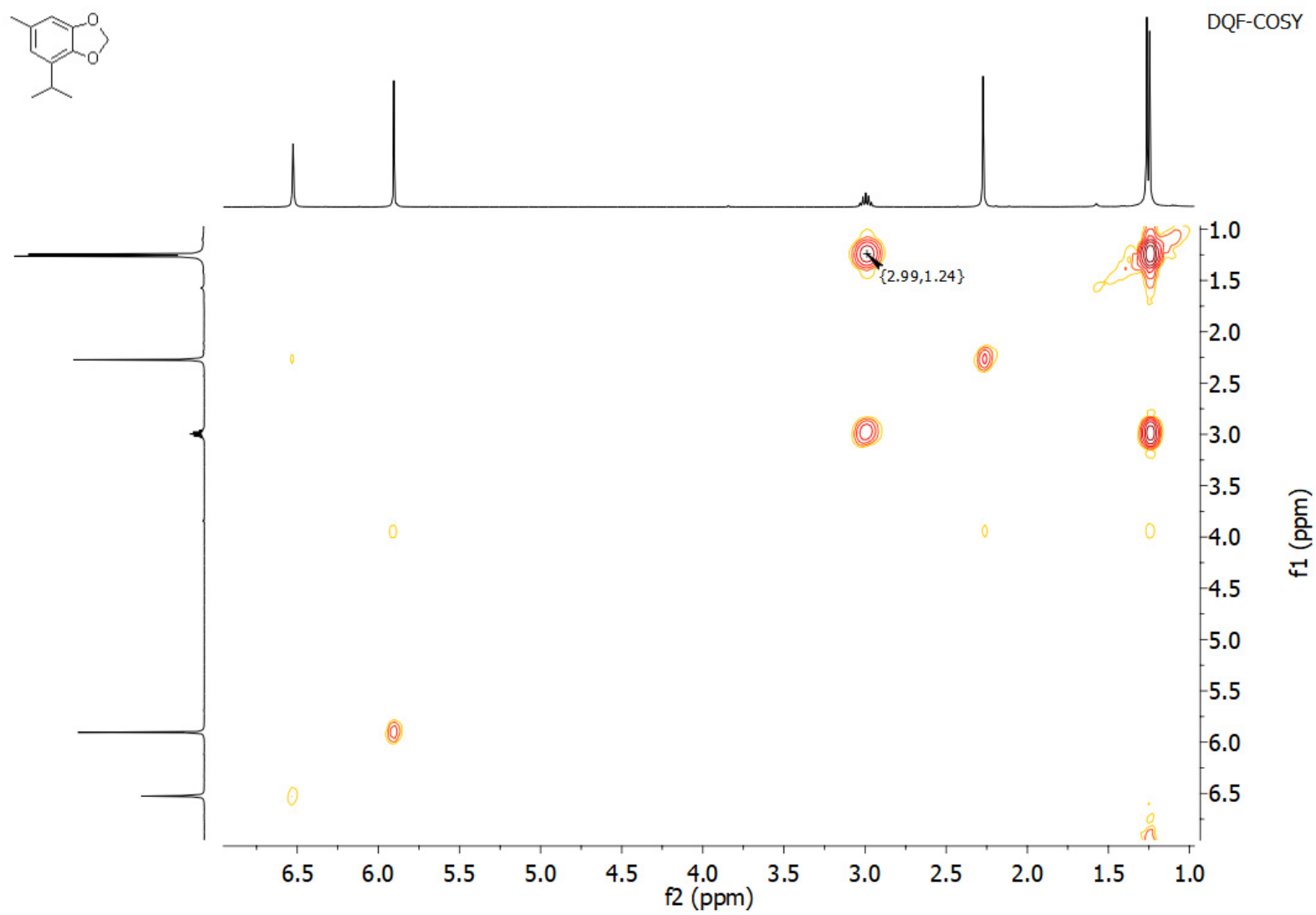
Figure S2. NRM spectra of herzogole 1



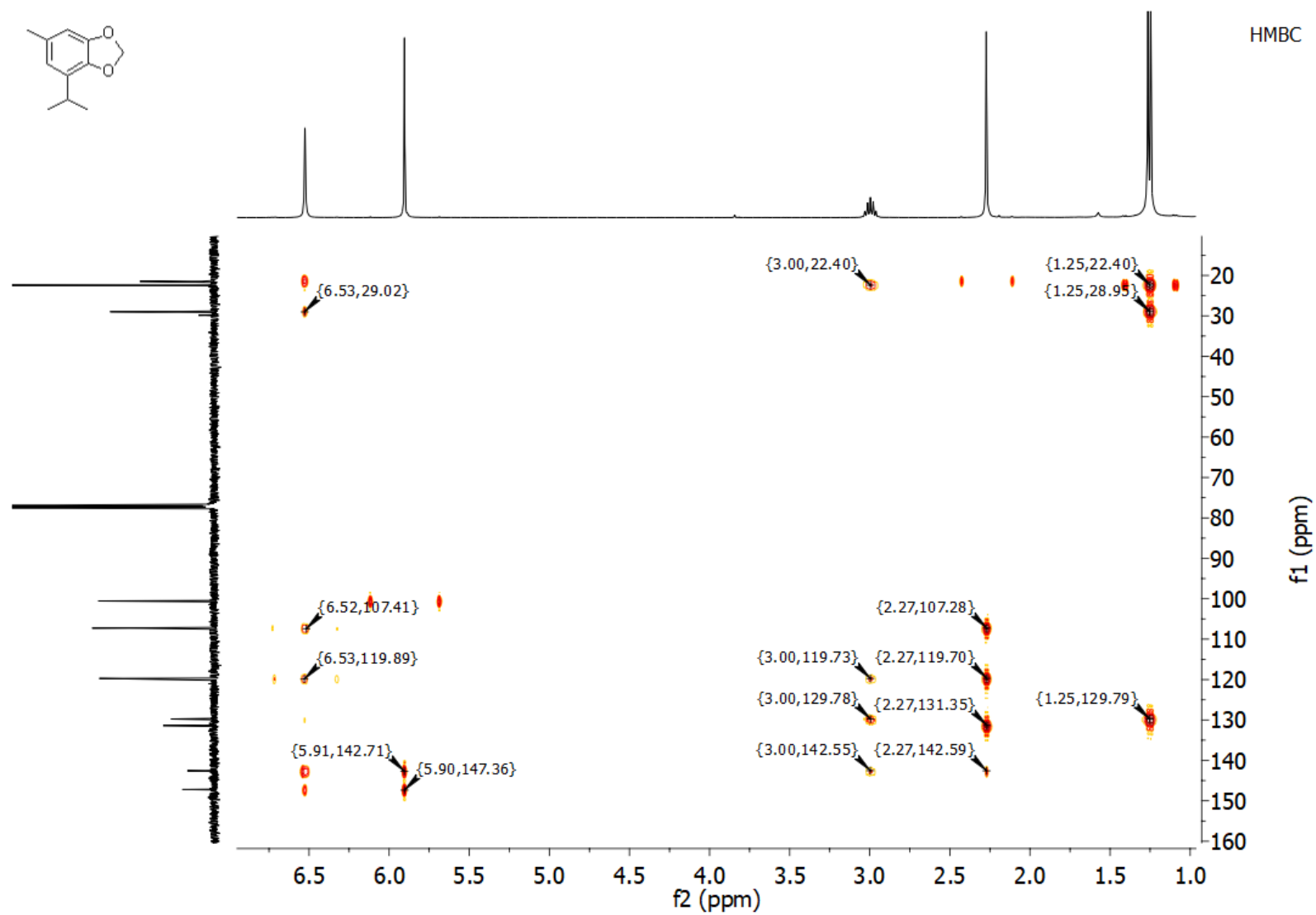












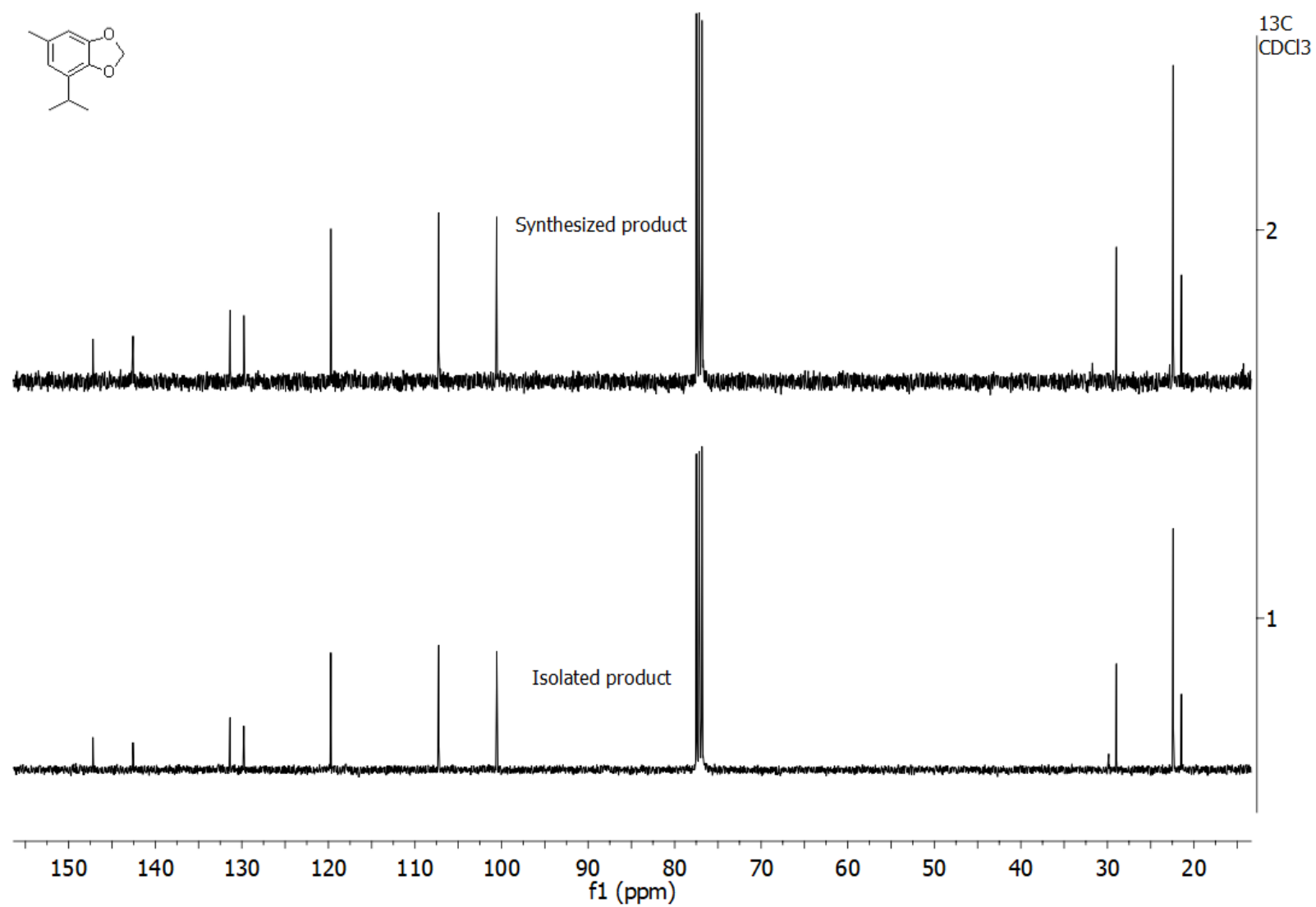



Figure S3. Enamine certificate of analysis



**CERTIFICATE OF ANALYSIS**

ENAMINE Ltd.  
78 Chervonotkatska street, 02660 Kyiv, Ukraine  
Telephone: +380 44 537 32 18  
Fax: +380 44 537 32 53  
www.enamine.net

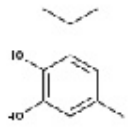
Date of release: 2021.03.18

Recommended retest date: 2024.09.21

Sample lot number: 2017-0154152

**Description**

Name:	5-methyl-3-(propan-2-yl)benzene-1,2-diol
Code(s):	EN300-26990451
Formula:	C <sub>10</sub> H <sub>14</sub> O <sub>2</sub>
Formula weight:	166.217
Storage temperature, °C:	RT
CAS number:	1443106-53-3




**Analysis**

Test	Specification	Result
State:	viscous liquid	viscous liquid
Colour:	brown	brown
LCMS	91%	95%, conforms with structure, R907022.PDF

This product is intended for investigational laboratory use only. It is pharmaceutically unrefined, may contain traces of uncharacterized toxic impurities, and is not intended for use in humans. Responsibility for its use and compliance with all applicable laws rests solely with the purchaser.

I hereby certify that data shown in this certificate is correct and accurate.



Dr. A. Konovets,  
Head of Quality Control Department

