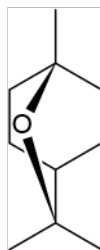
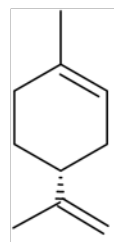


Linalool



1,8-cineole



D-limonene

Figure S1. Structural formula of major components of the *Lindera umbellata* essential oil. The main components of the *Lindera umbellata* essential oil used in this study are Linalool (42.8%), 1,8-cineole (13.7%), and D-limonene (7.42%). The structural formula was drawn by ACD/ChemSketch Freeware (ver. 2021.1.0).