

Supplementary Figures:

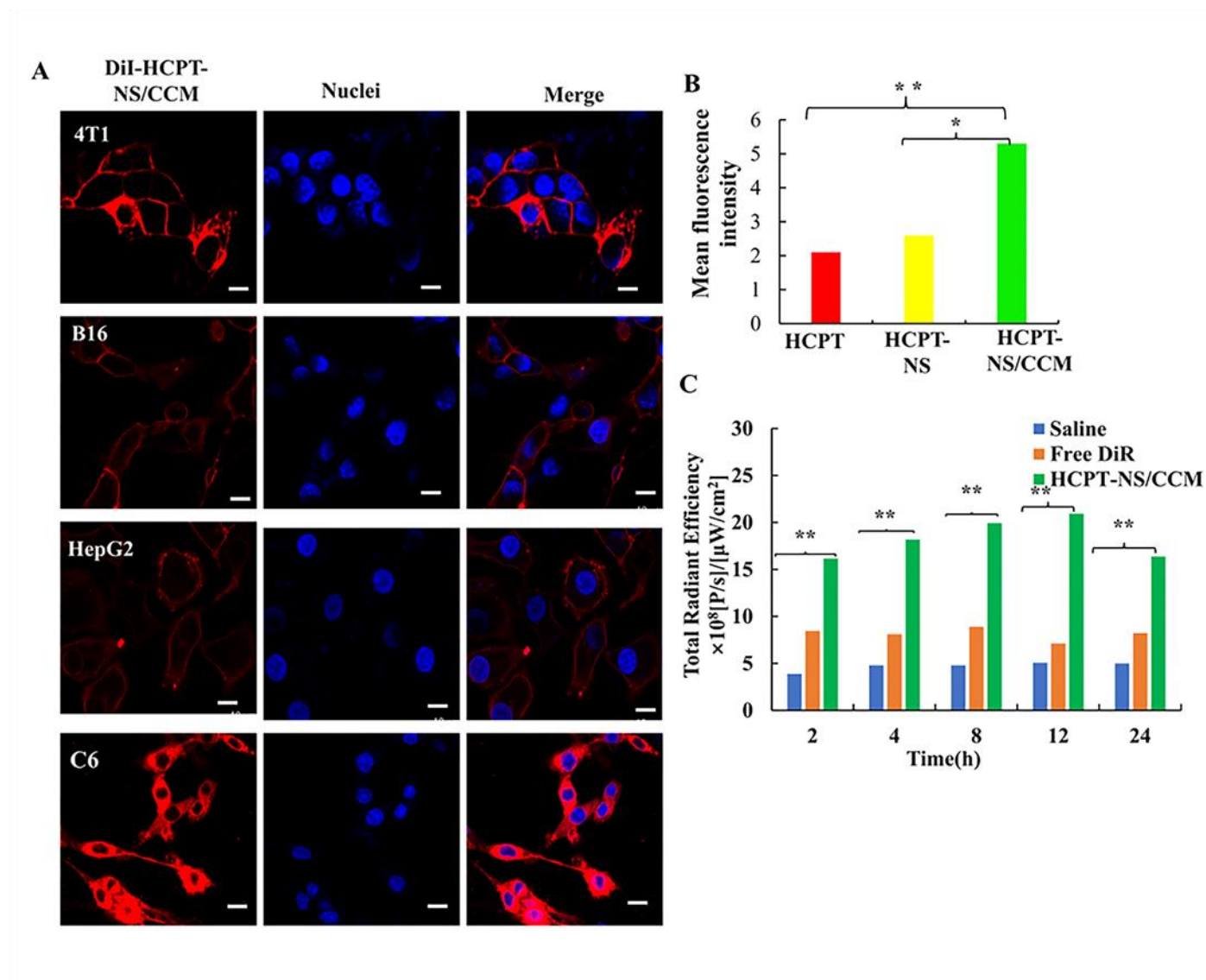


Figure. S1. Cellular uptake of HCPT- NS/CCCM in different kinds of cancer cell measured using CLSM assays(A). The TUNEL tumor tissue fluorescence intensity measurement of Image J; 20x magnification(B). Brain fluorescence intensity analysis of saline, DiR-HCPT-NS, and DiR-HCPT-NS/CCM in glioma-bearing mice(C). * indicates $p < 0.05$; ** indicates $p < 0.01$.