

Pages of Supplementary Material for Article

Structural characterization of a polysaccharide from *Gastrodia elata* and its bioactivity on gut microbiota

by

Jiangyan Huo ^{1,2,†}, Min Lei ^{1,2,†}, Feifei Li ^{1,2}, Jinjun Hou ^{1,2}, Zijia Zhang ^{1,2}, Huali Long ^{1,2}, Xianchun Zhong ^{1,2}, Yameng Liu ^{1,2}, Cen Xie ^{1,2,*} and Wanying Wu ^{1,2,*}

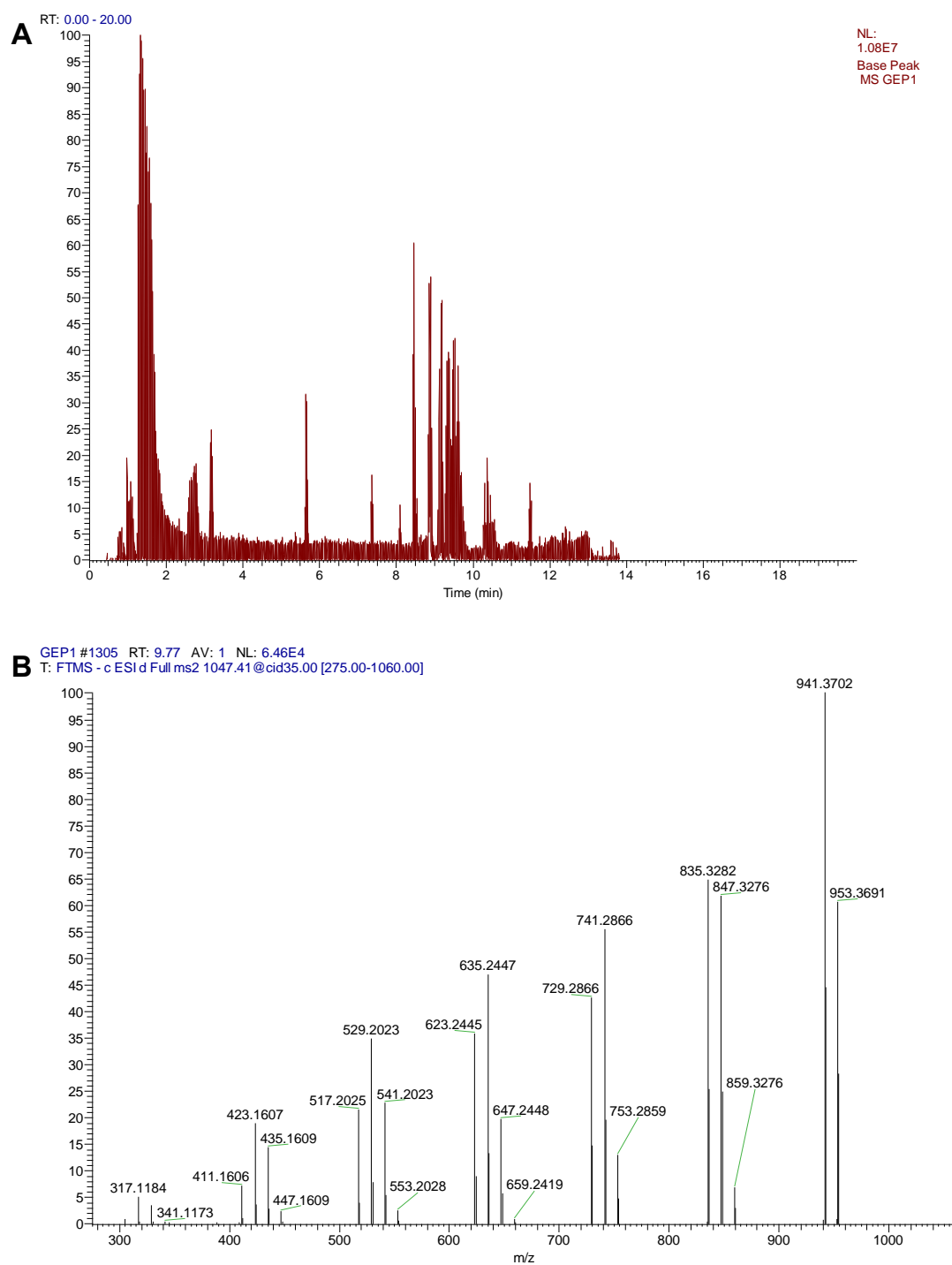
¹ Shanghai Research Center for Modernization of Traditional Chinese Medicine, National Engineering Laboratory for TCM Standardization Technology, Shanghai Institute of Materia Medica, Chinese Academy of Sciences, Shanghai 201203, China

² University of Chinese Academy of Sciences, Beijing 100049, China

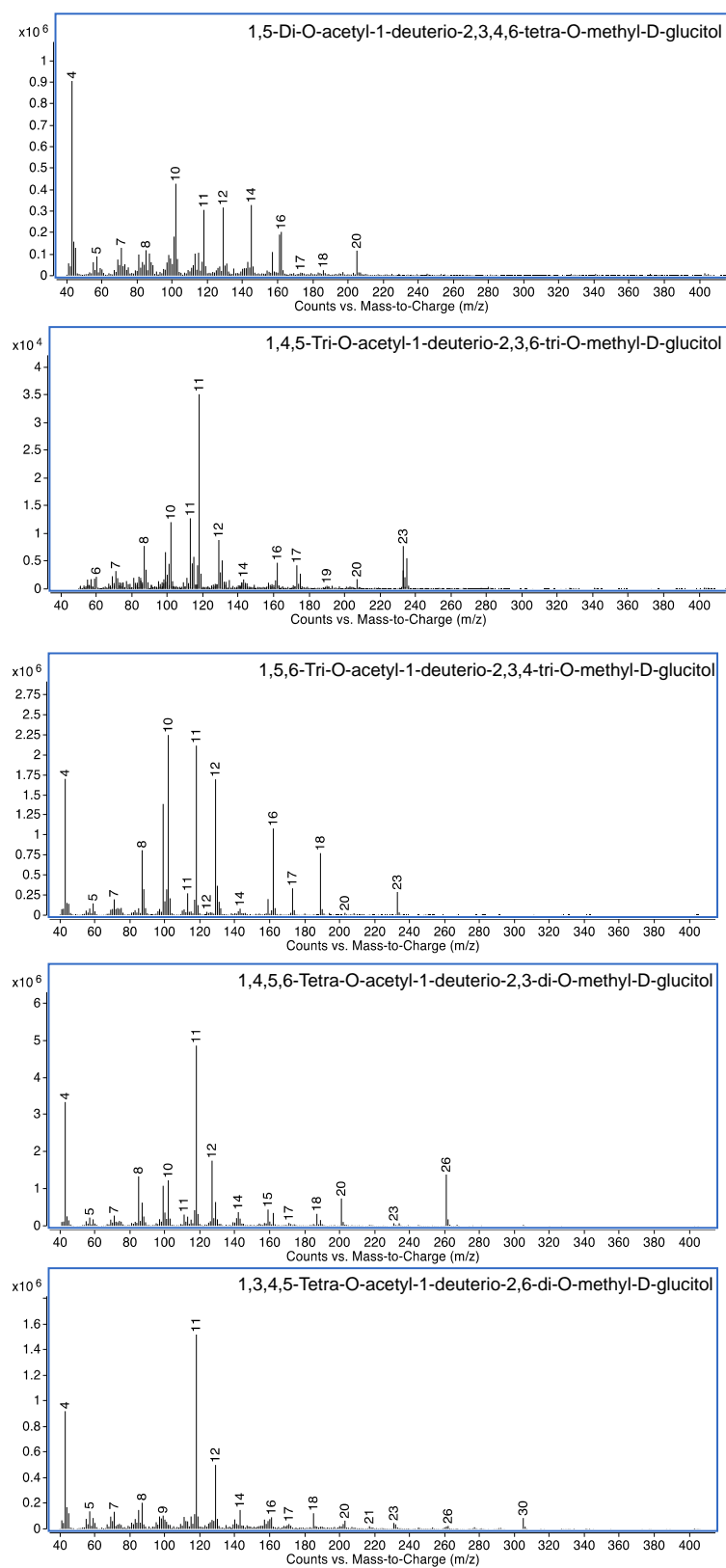
* Correspondence: xiecen@simm.ac.cn (C.X.); wanyingwu@simm.ac.cn (W.W.)

† These authors contributed equally to this work.

The BPI chromatogram (A) and MS/MS spectra of 10HA in GEP-1 hydrolysate in negative mode (B).



The mass spectra of PMAAs derived from **GEP-1**.



SM 3

Figure 3

^1H and ^{13}C NMR spectra of **GEP-1**.

