

SUPPORTING INFORMATION

Aromatic Amines in Organic Synthesis. Part II. *p*-Aminocinnamaldehydes.

Marek Pietrzak and Beata Jędrzejewska*

*Faculty of Chemical Technology and Engineering, UTP University of Sciences and Technology,
Seminarnyja 3, 85-326 Bydgoszcz, Poland*

	page
Electronic absorption spectra in methanol and ethyl acetate	S2
Fluorescence spectra in methanol and ethyl acetate	S3
¹ H and ¹³ C NMR spectra	S4-S13
IR spectra	S14-S23

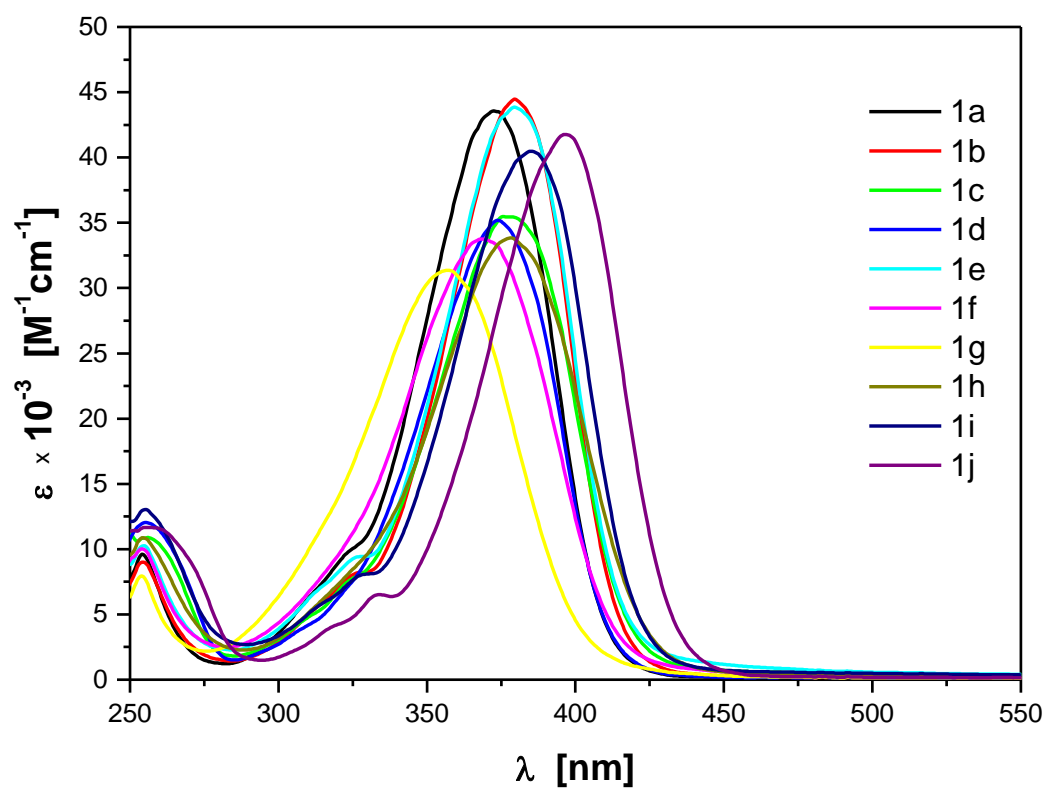


Fig. S1. Electronic absorption spectra of tested *p*-aminocinnamaldehydes in ethyl acetate.

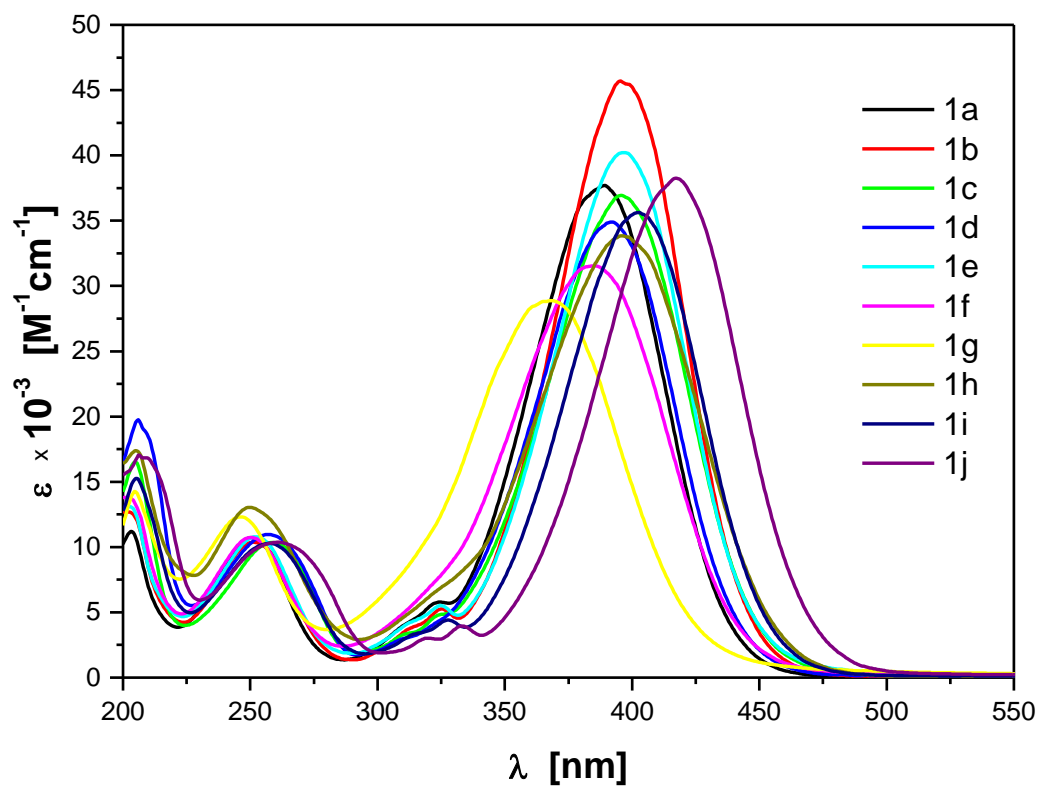


Fig. S2. Electronic absorption spectra of tested *p*-aminocinnamaldehydes in methanol.

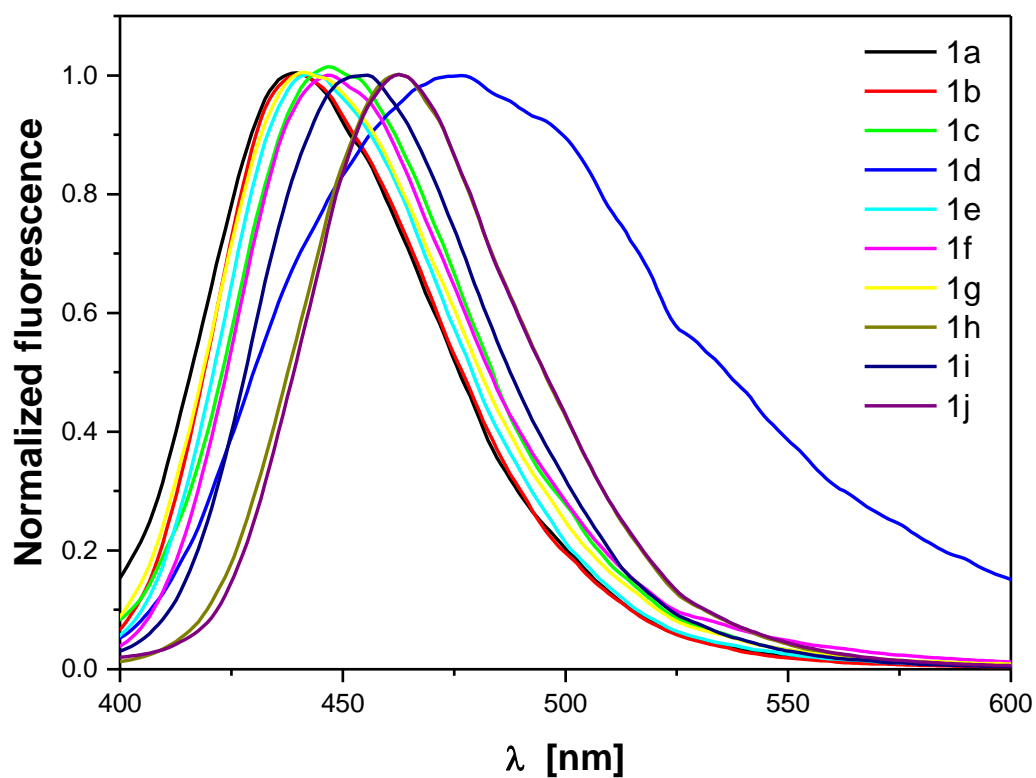


Fig. S3. Normalized fluorescence spectra of tested *p*-aminocinnamaldehydes in ethyl acetate.

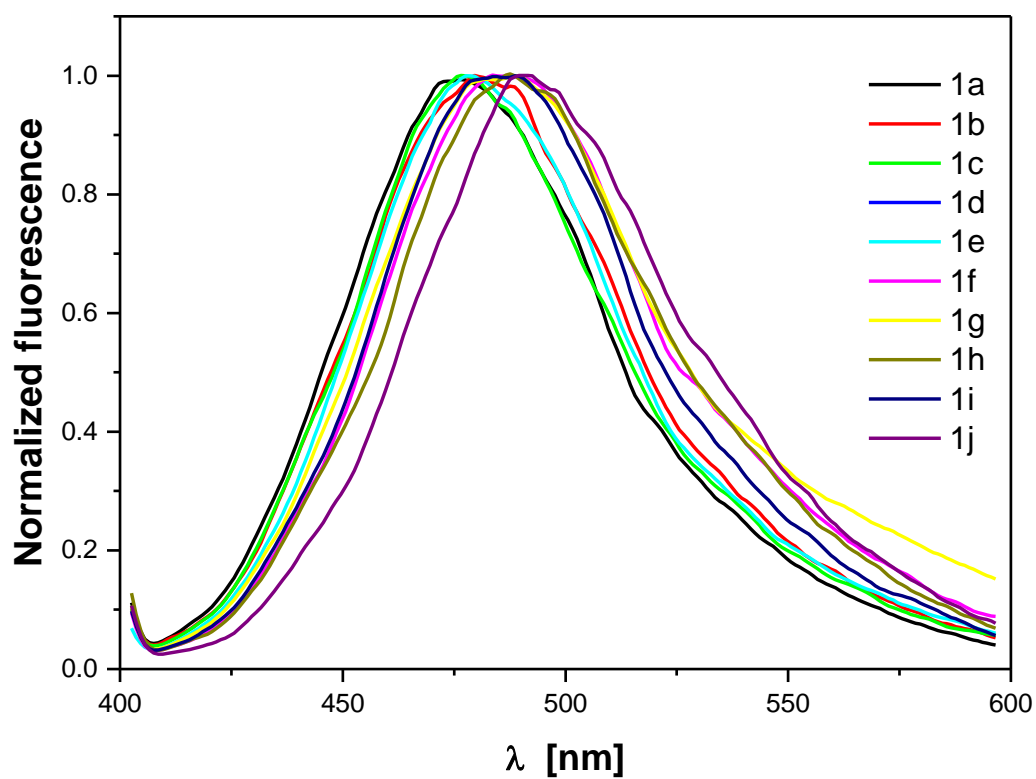
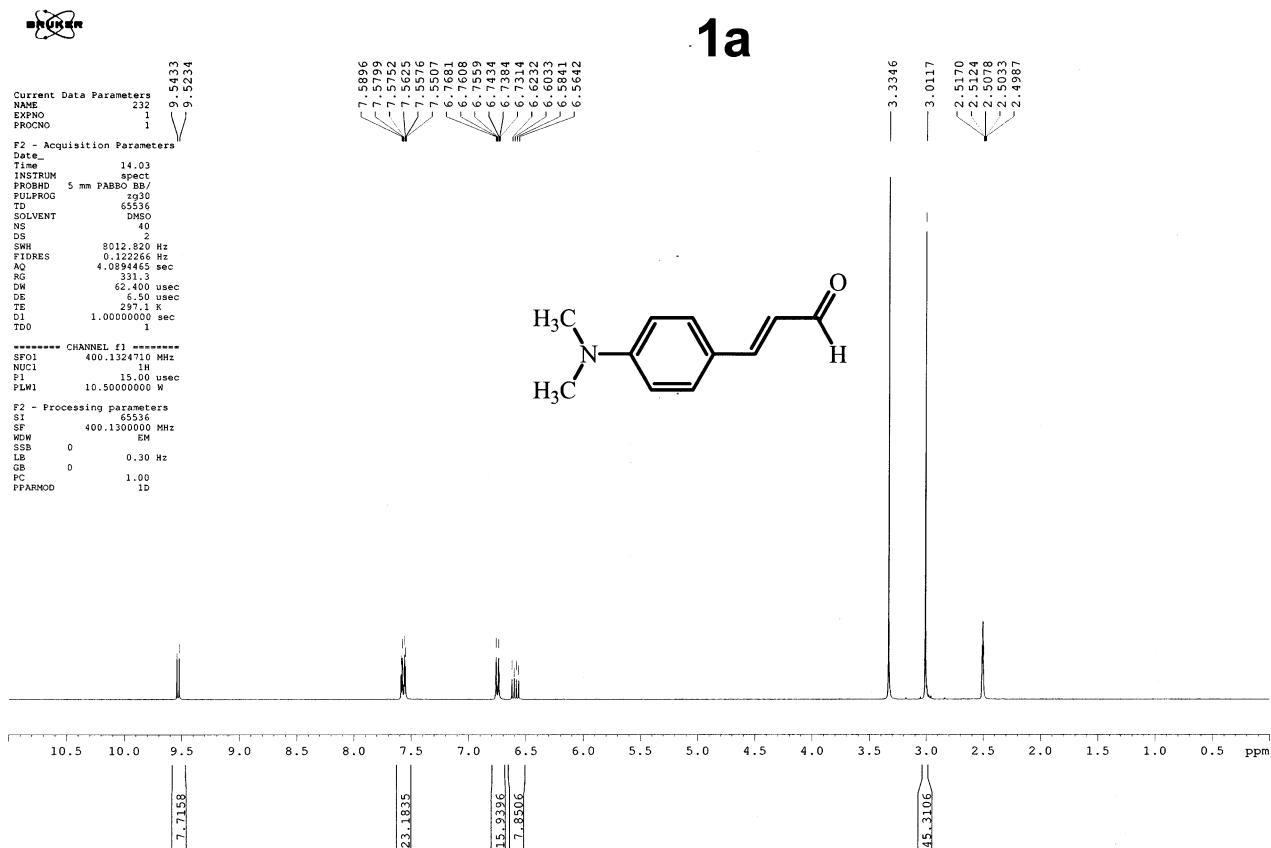
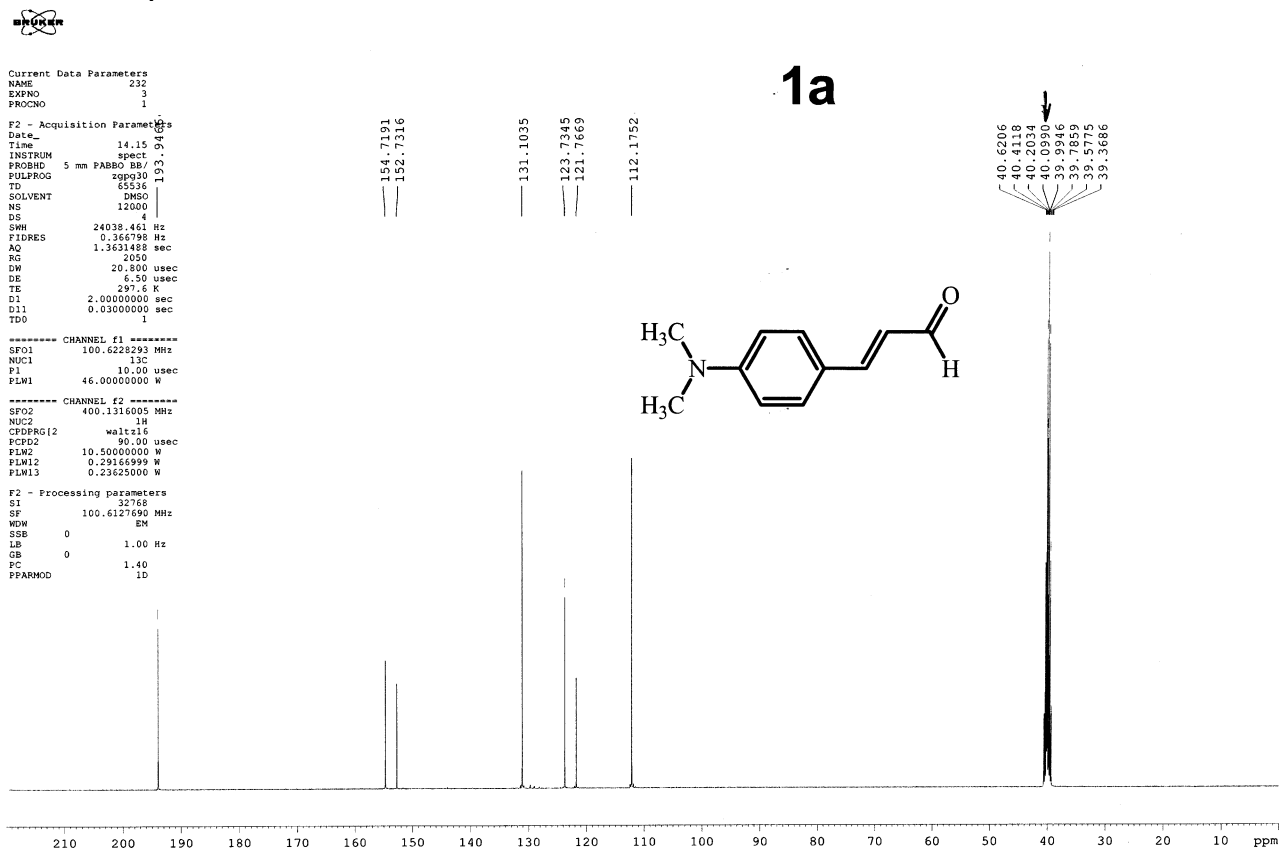


Fig. S4. Normalized fluorescence spectra of tested *p*-aminocinnamaldehydes in methanol.

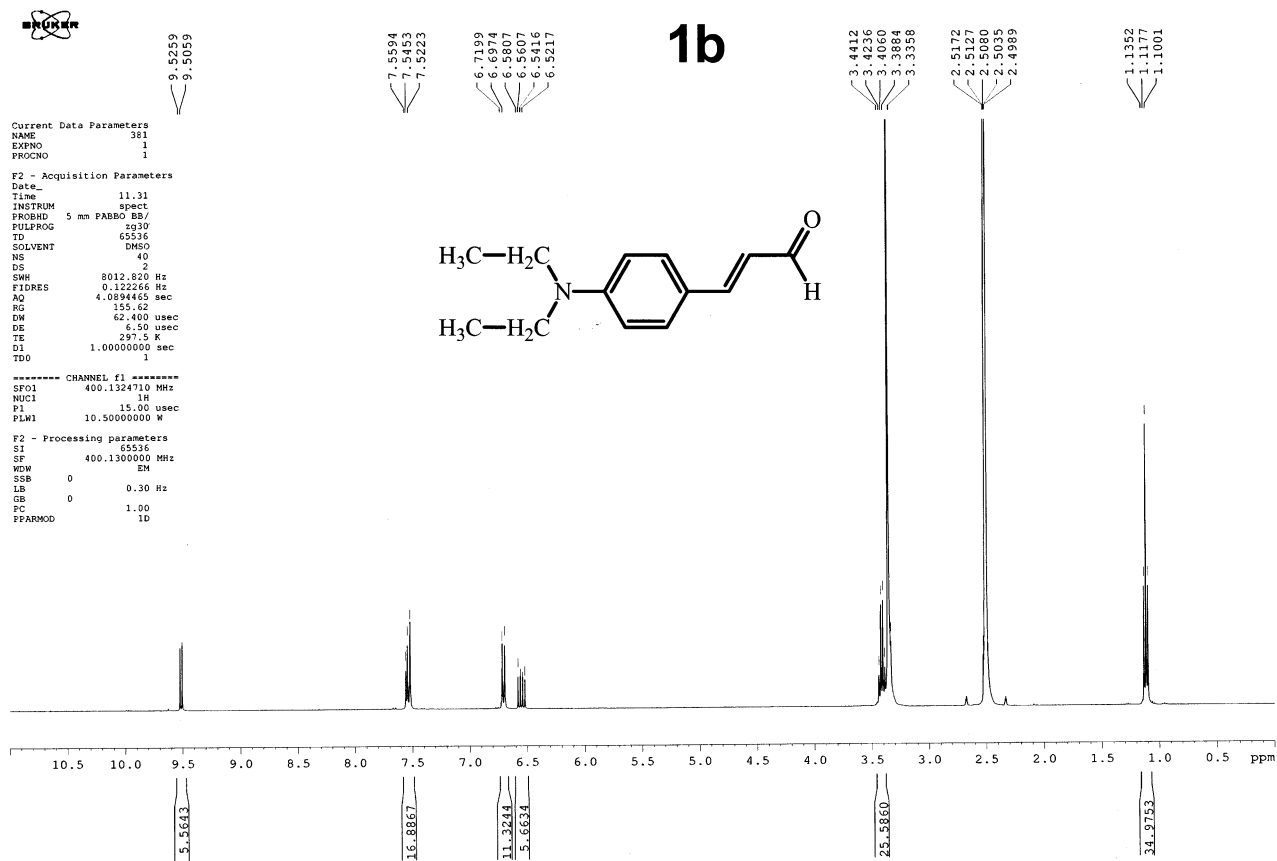
¹H NMR spectrum of **1a**



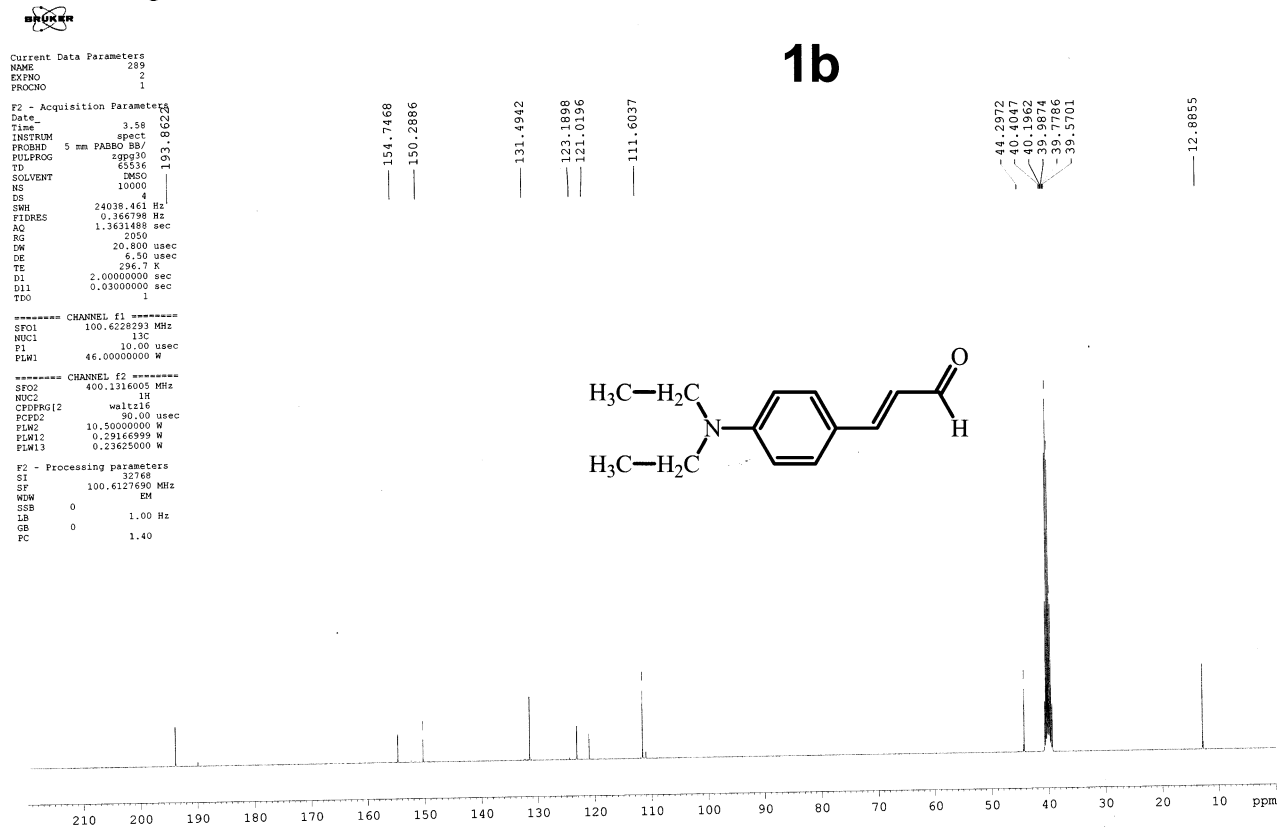
¹³C NMR spectrum of **1a**



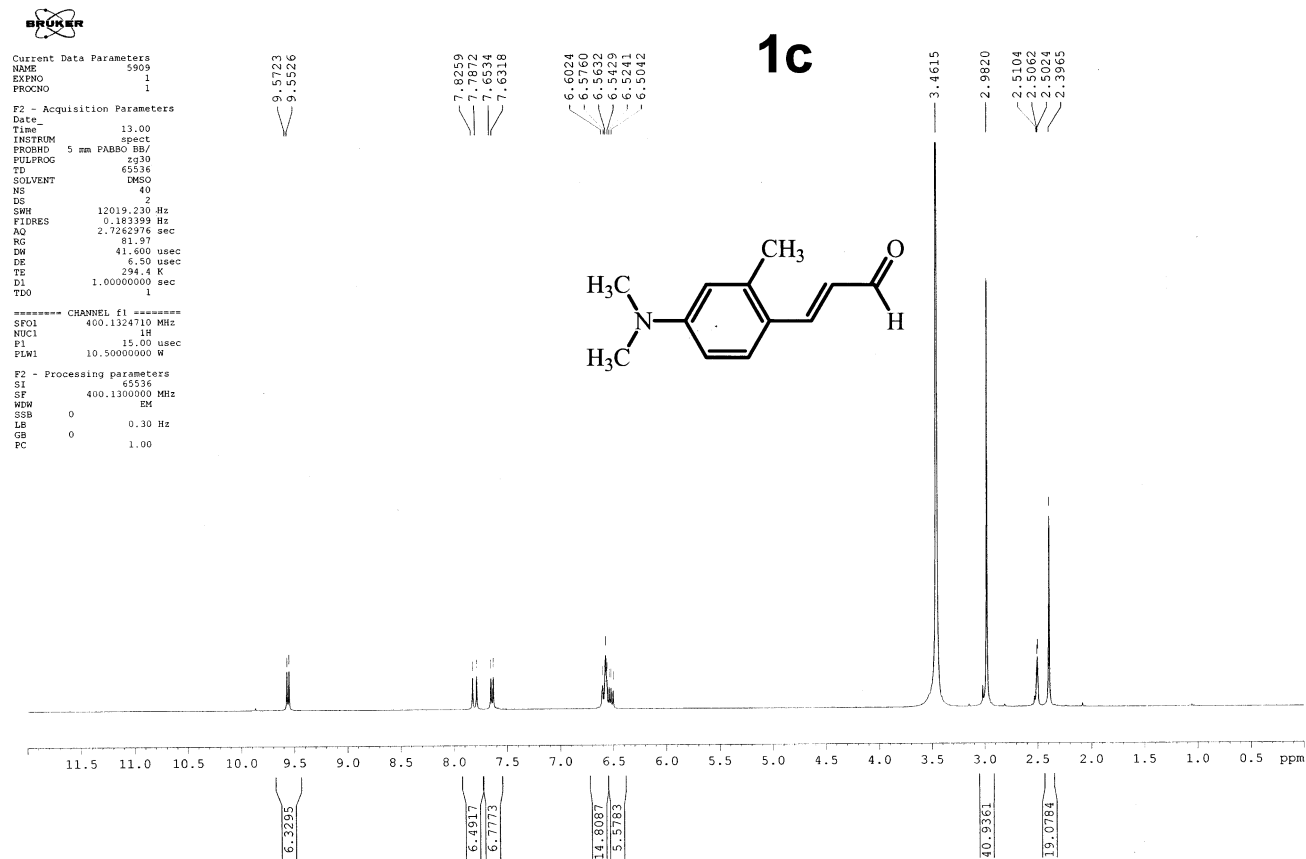
¹H NMR spectrum of **1b**



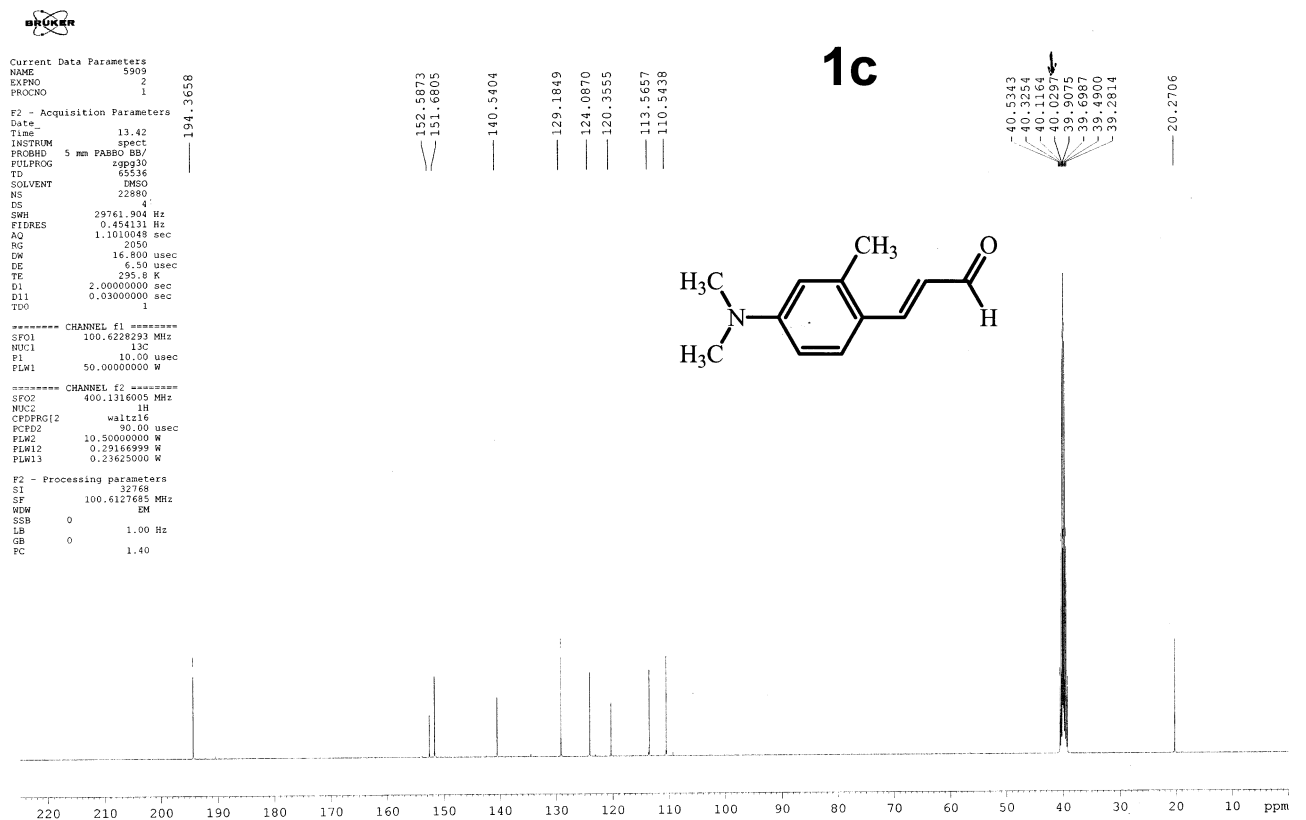
¹³C NMR spectrum of **1b**



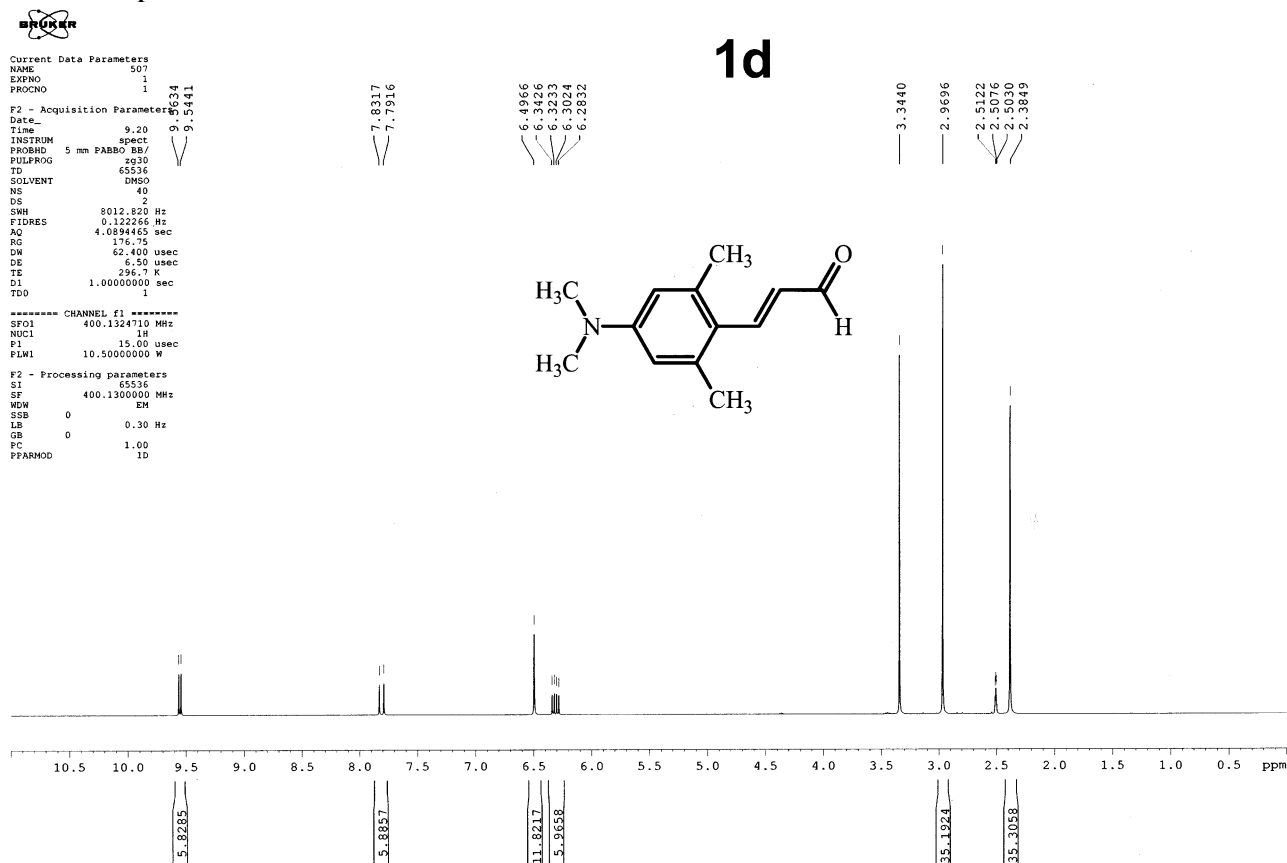
¹H NMR spectrum of **1c**



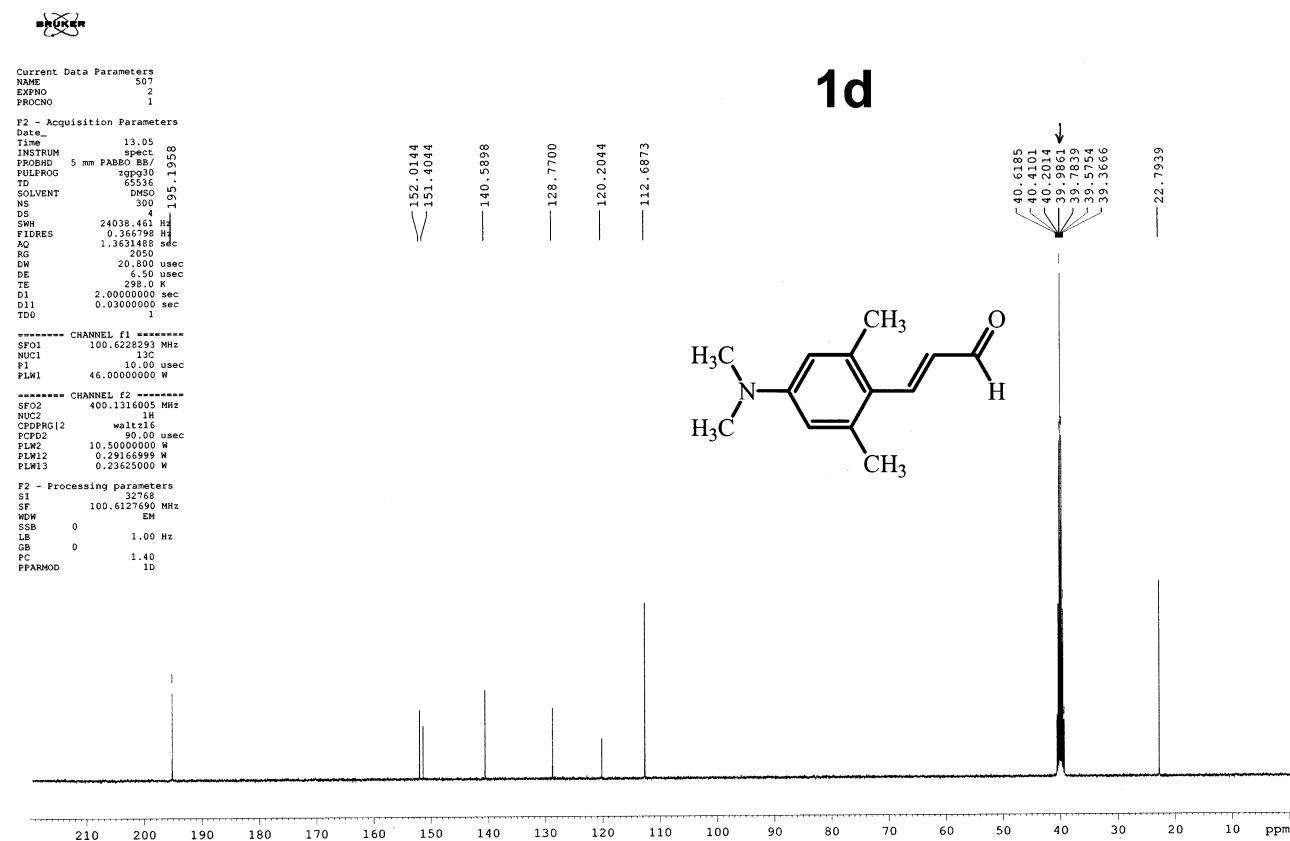
¹³C NMR spectrum of **1c**



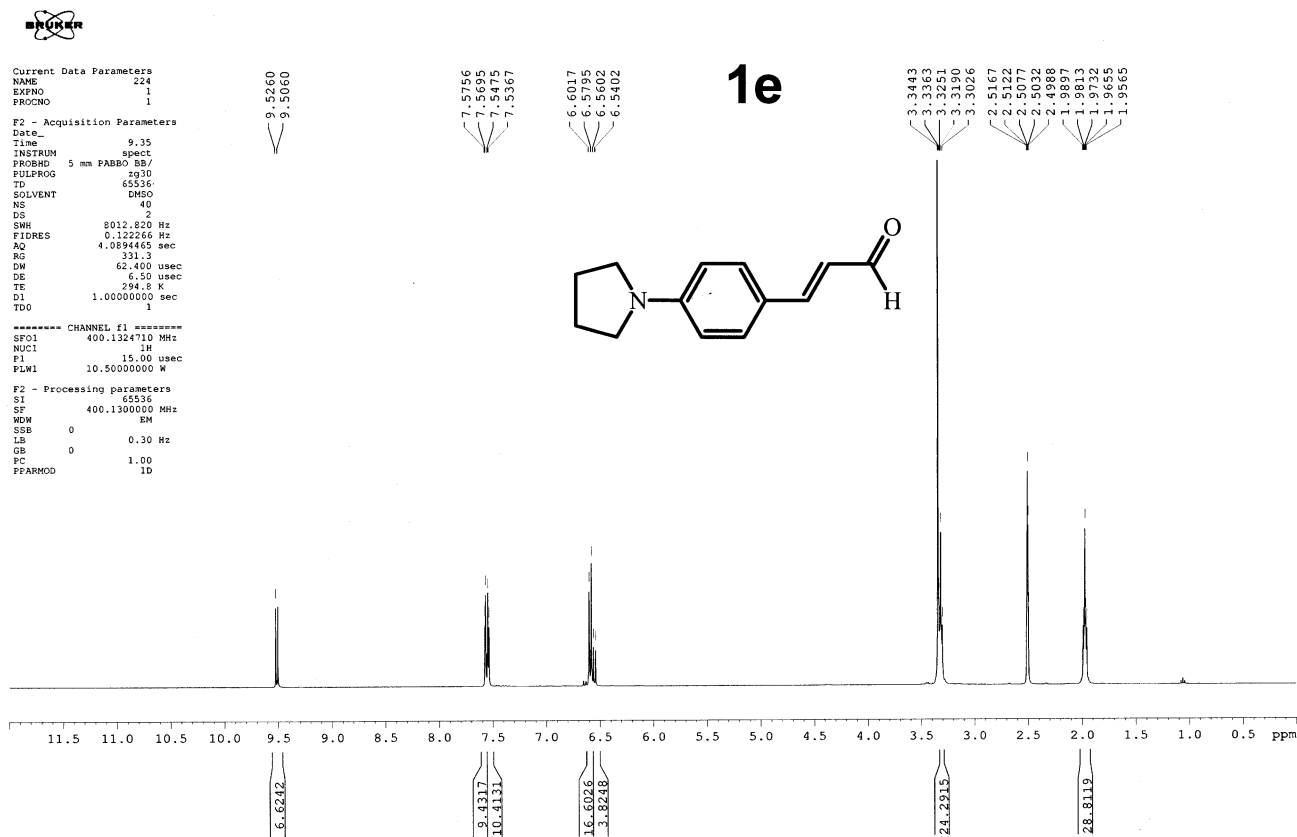
¹H NMR spectrum of **1d**



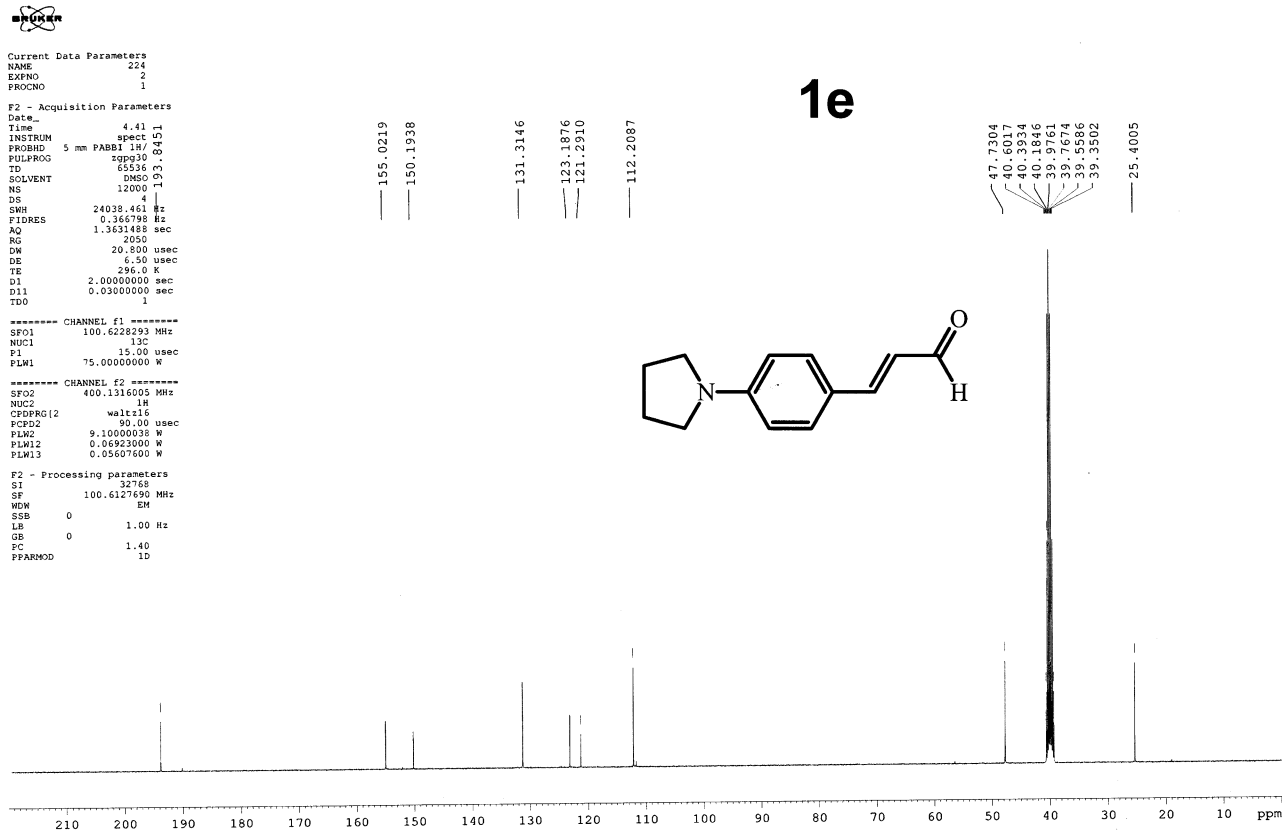
¹³C NMR spectrum of **1d**



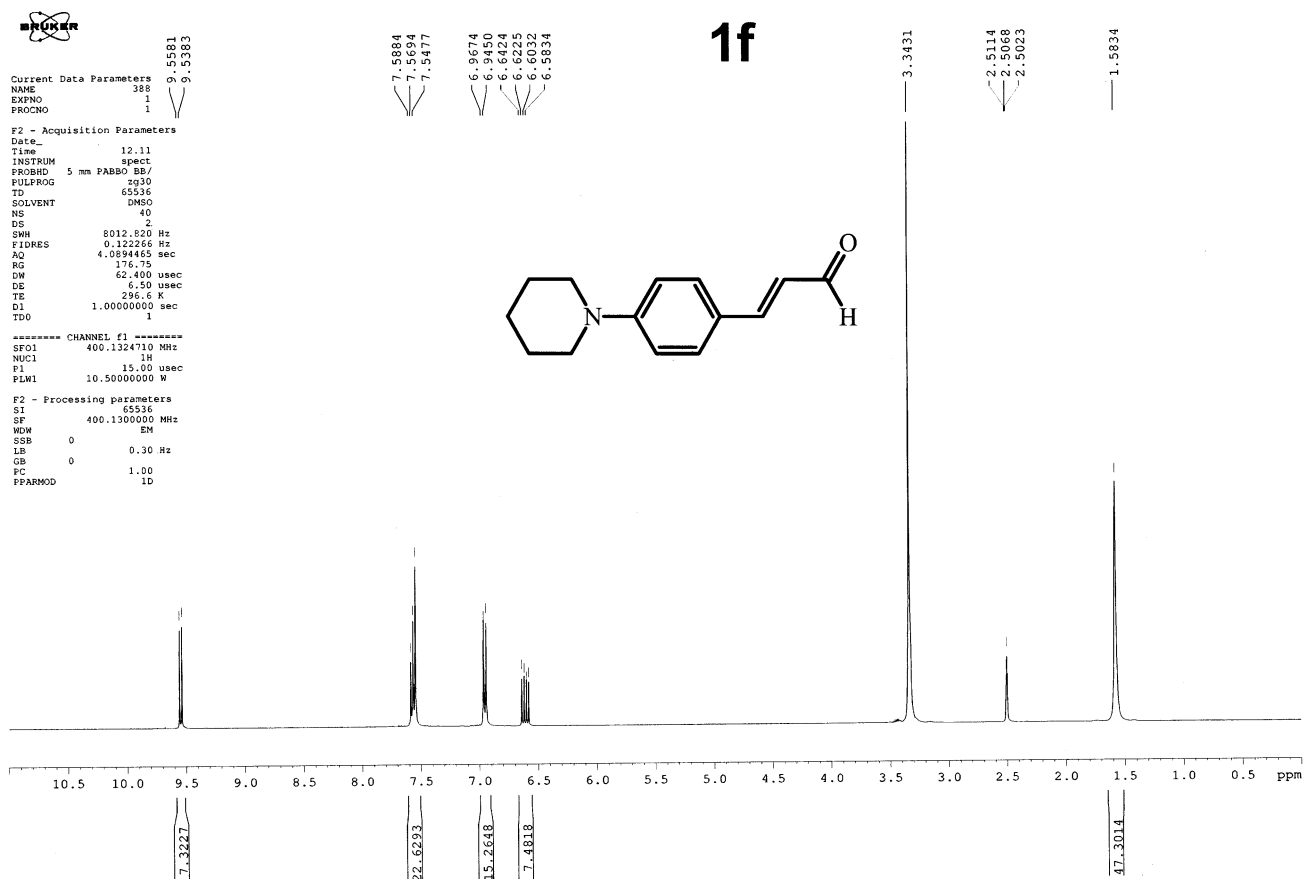
¹H NMR spectrum of **1e**



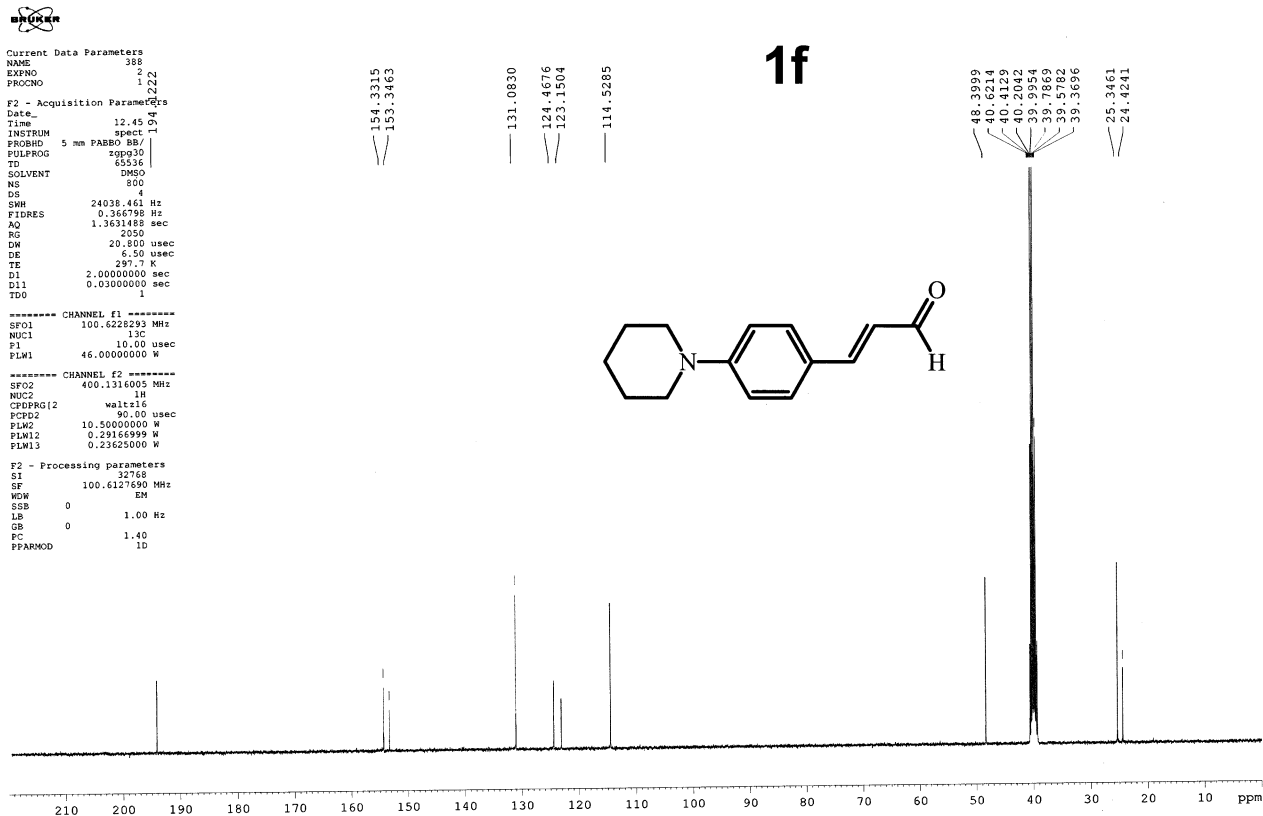
¹³C NMR spectrum of **1e**



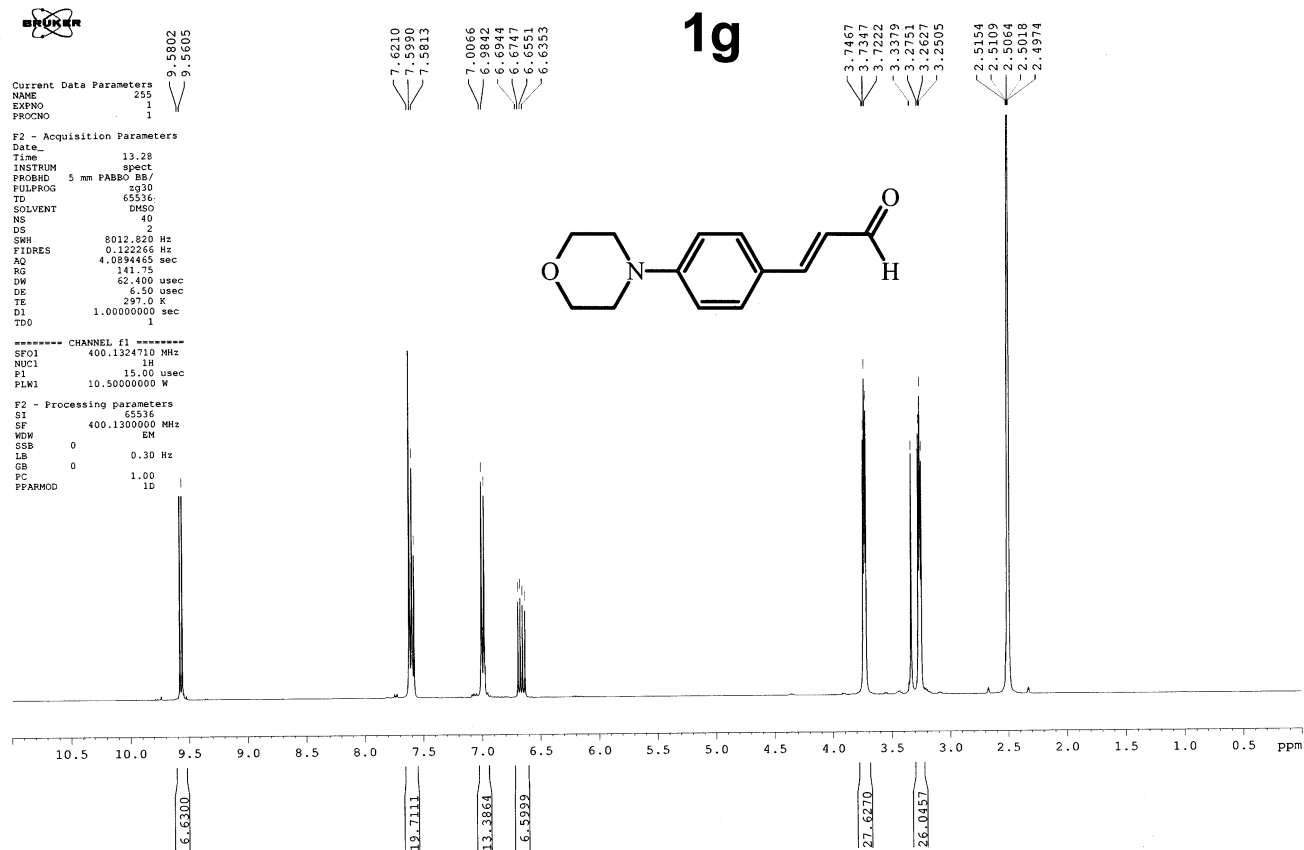
¹H NMR spectrum of **1f**



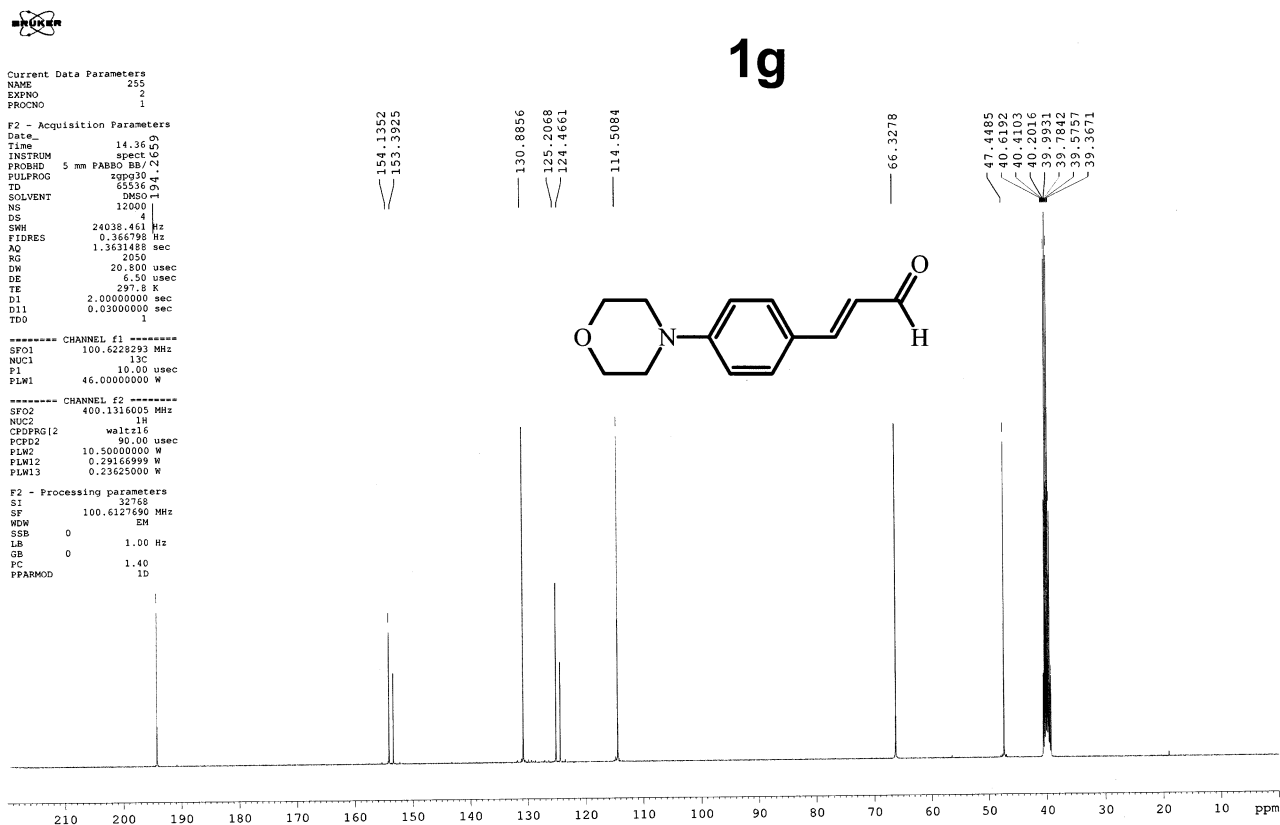
¹³C NMR spectrum of **1f**



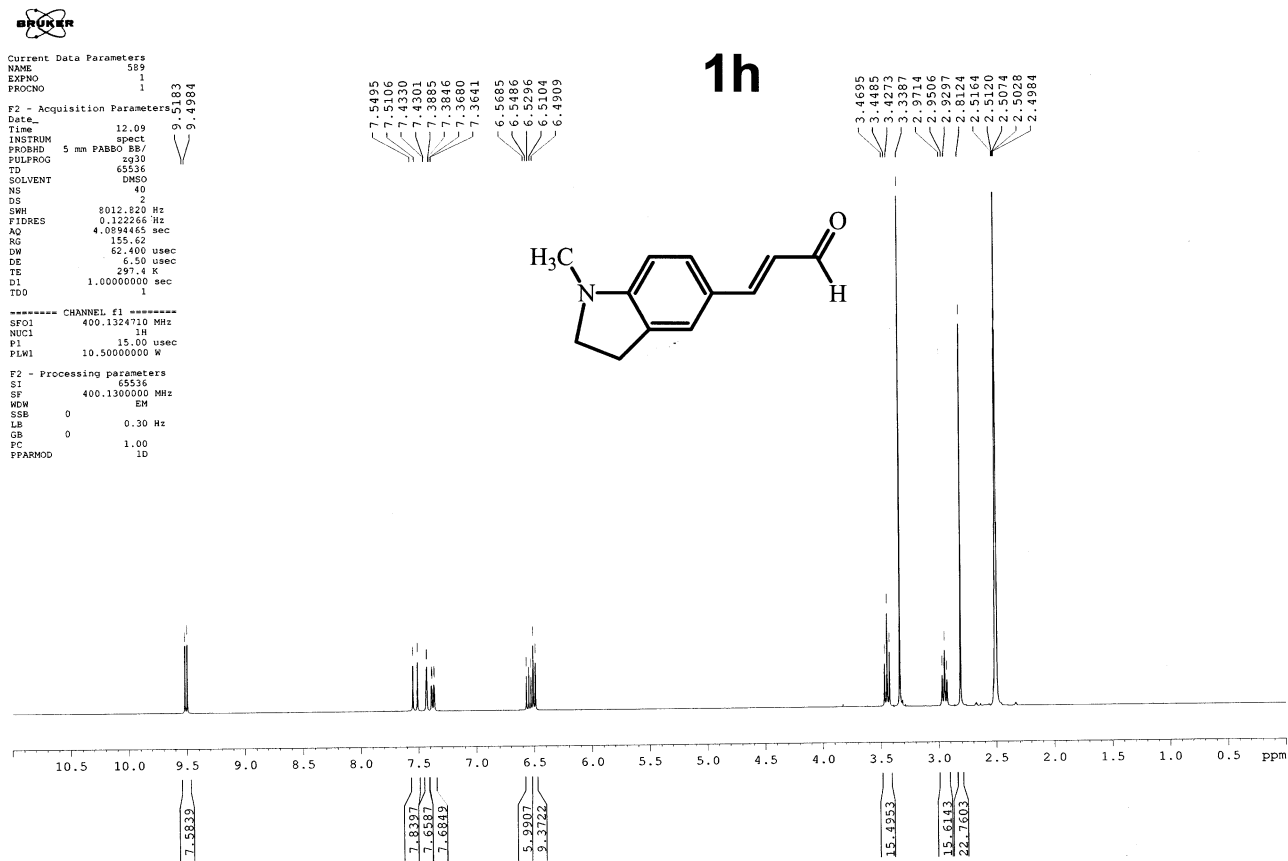
¹H NMR spectrum of **1g**



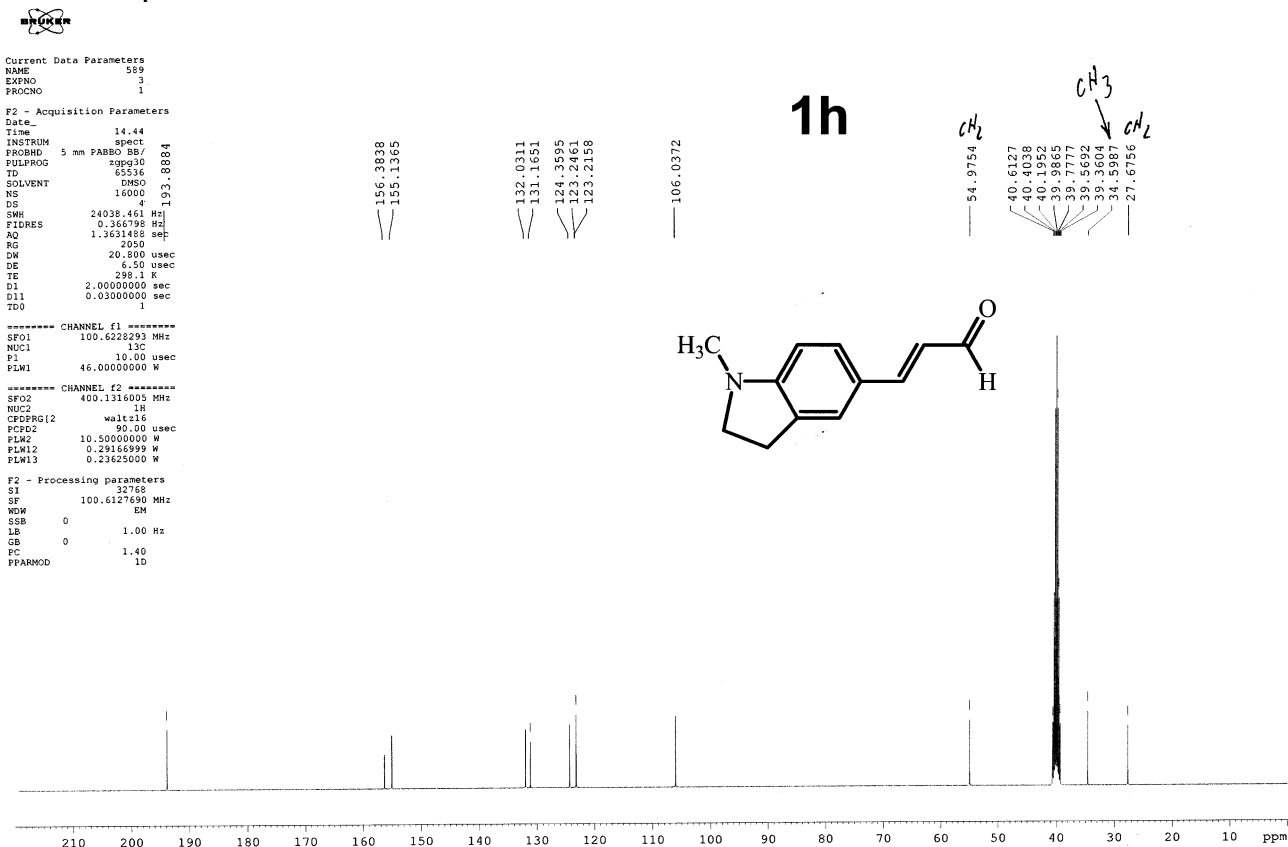
¹³C NMR spectrum of **1g**

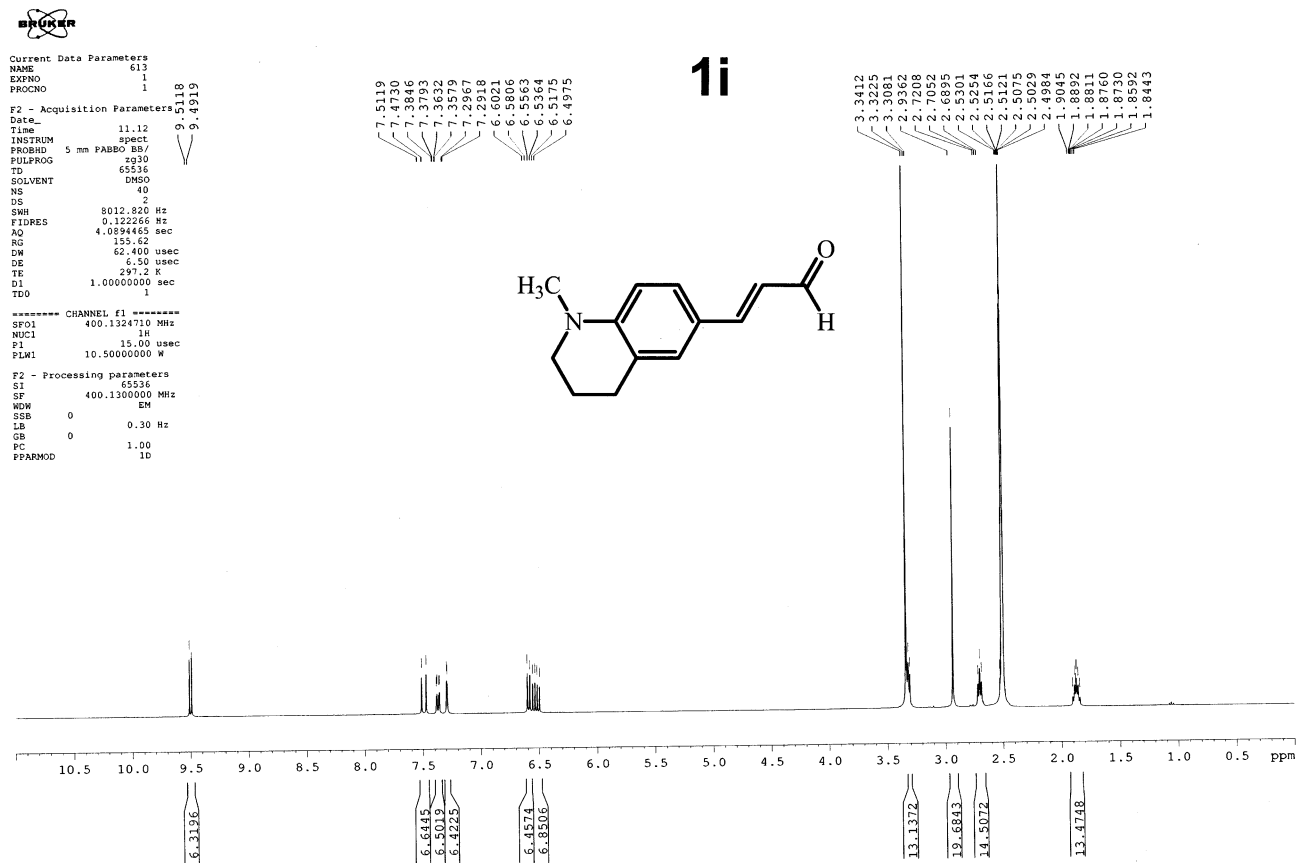
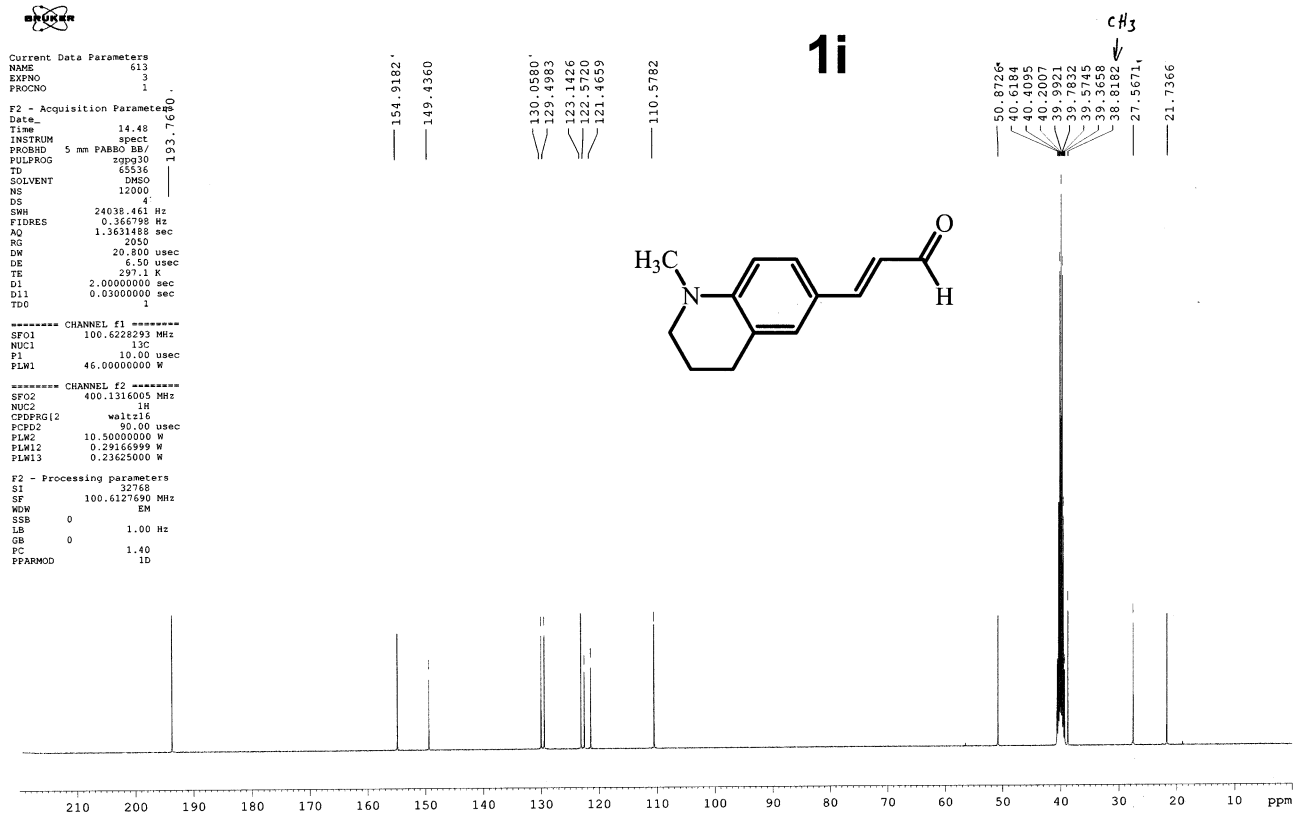


¹H NMR spectrum of **1h**

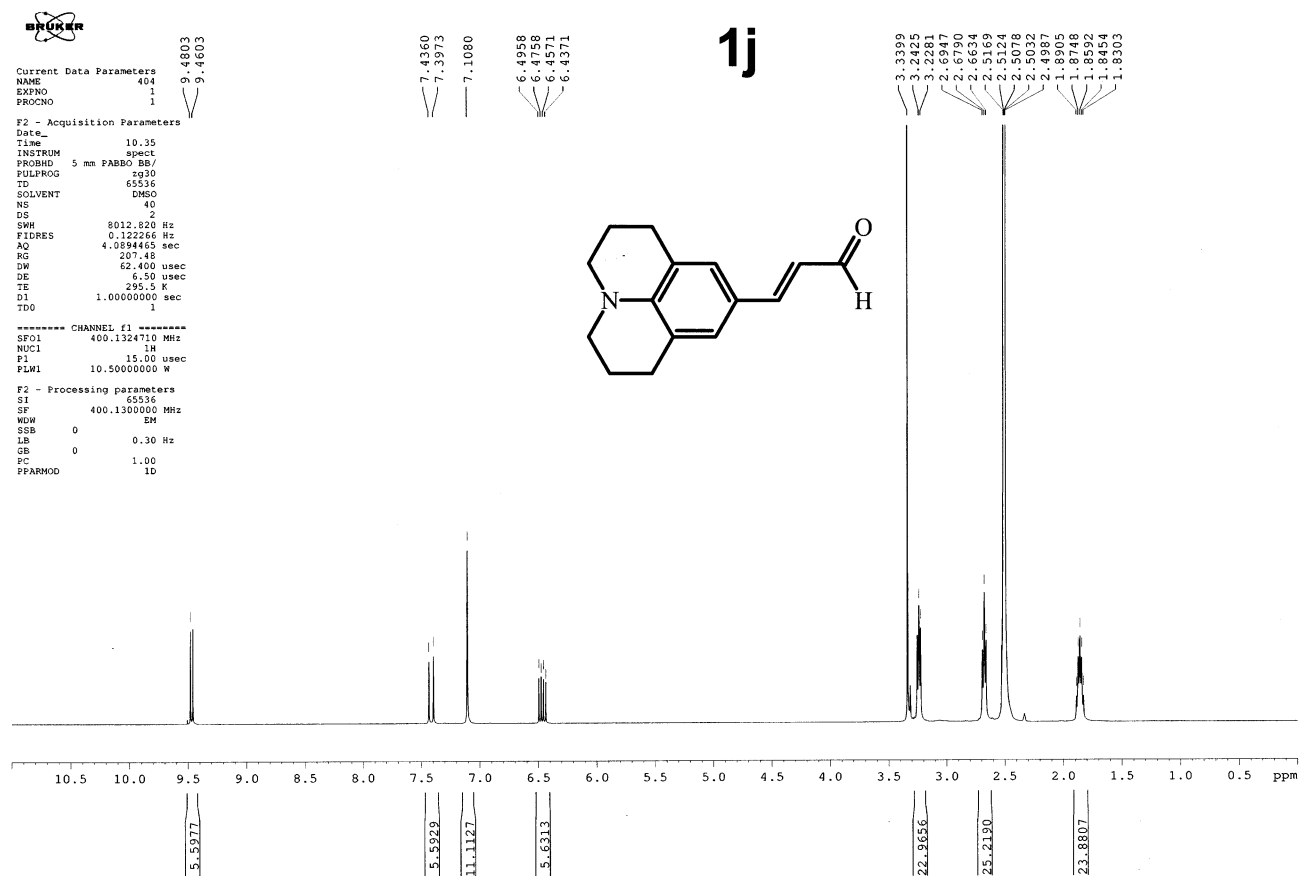


¹³C NMR spectrum of **1h**

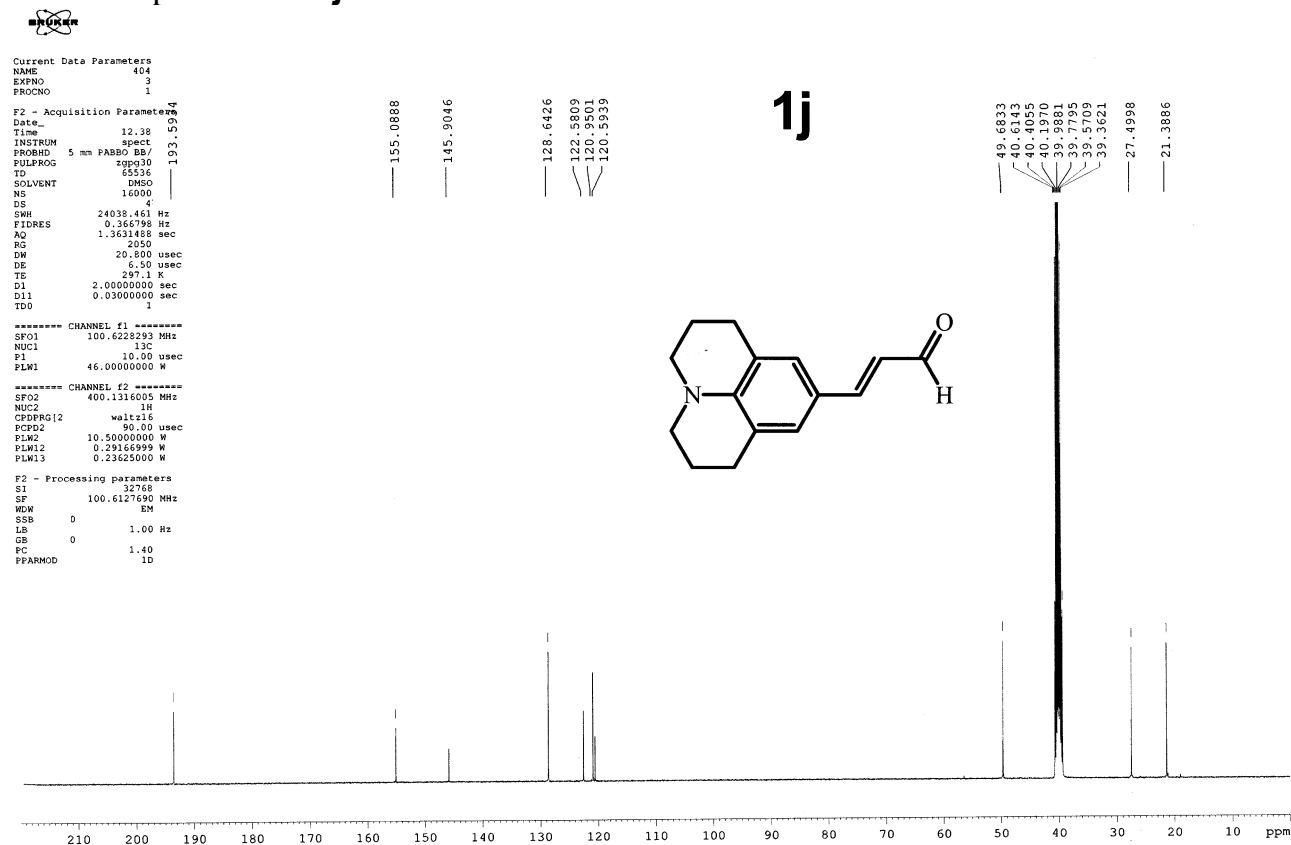


¹H NMR spectrum of **1i** ^{13}C NMR spectrum of **1i**

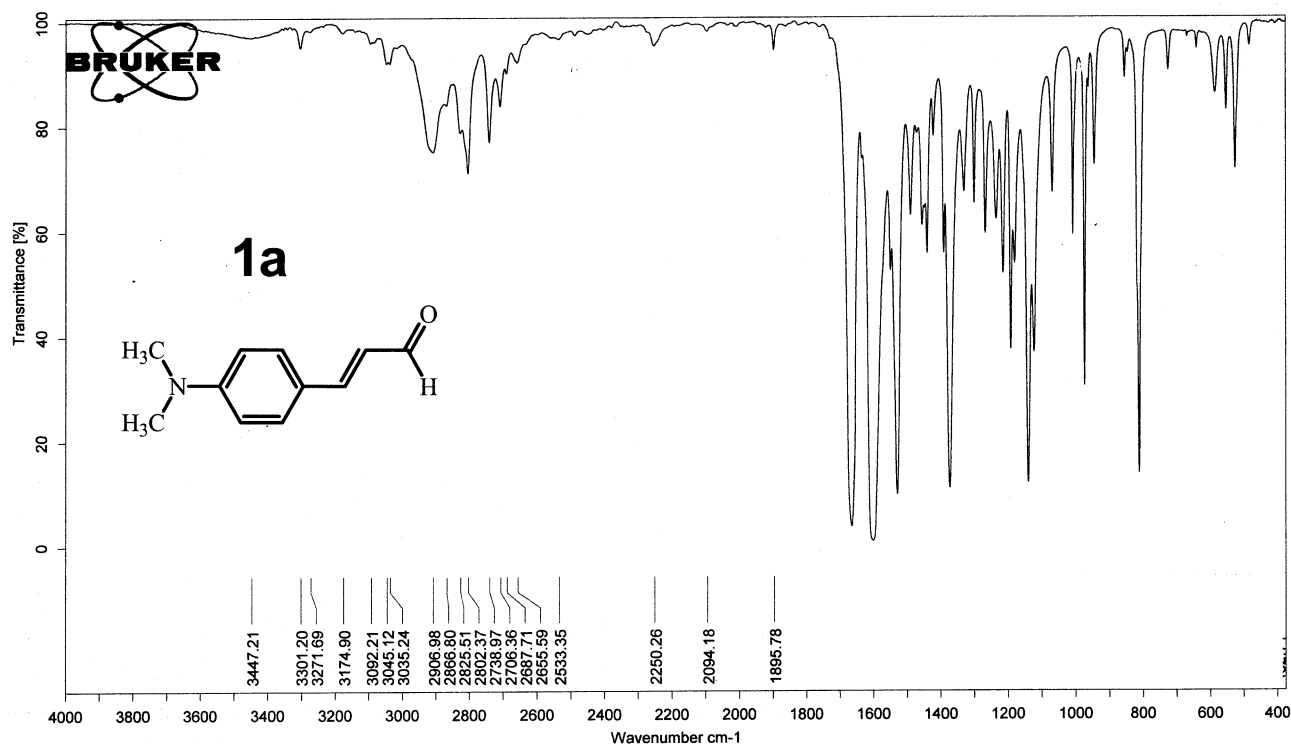
¹H NMR spectrum of **1j**



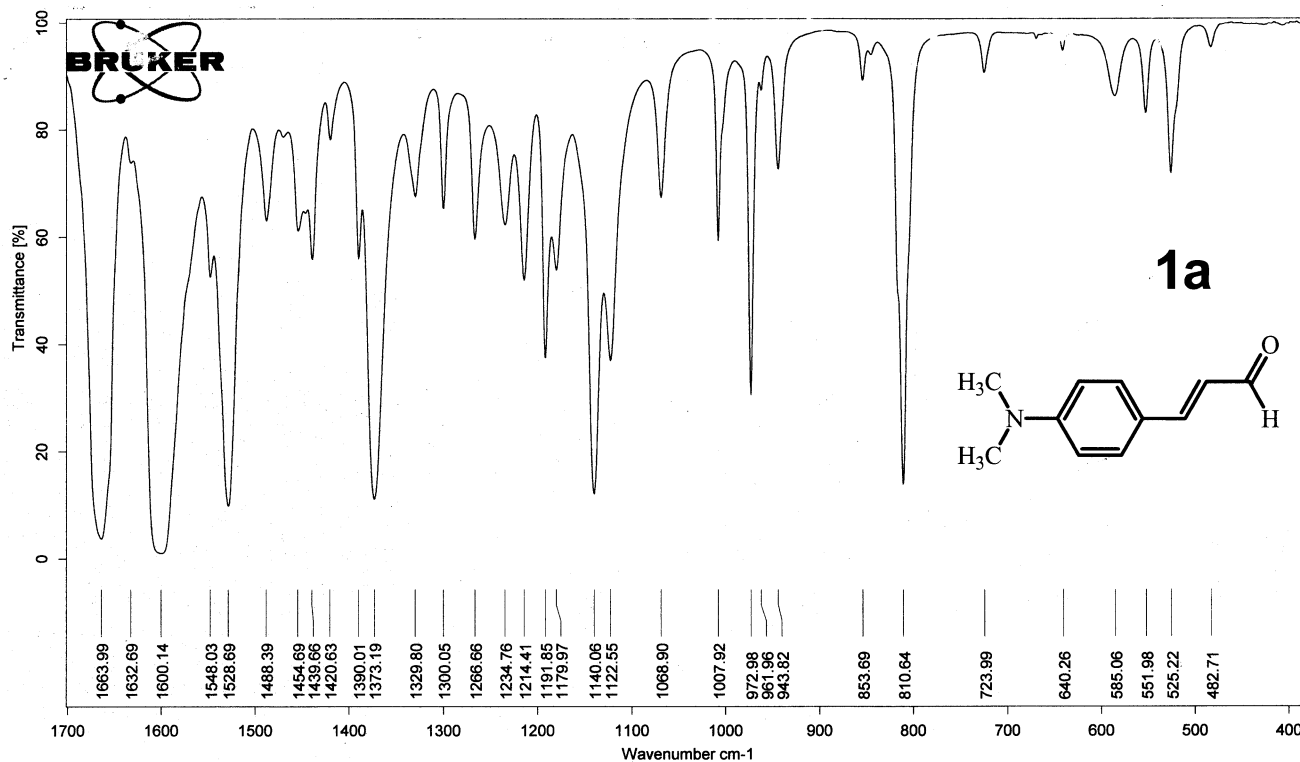
¹³C NMR spectrum of **1j**



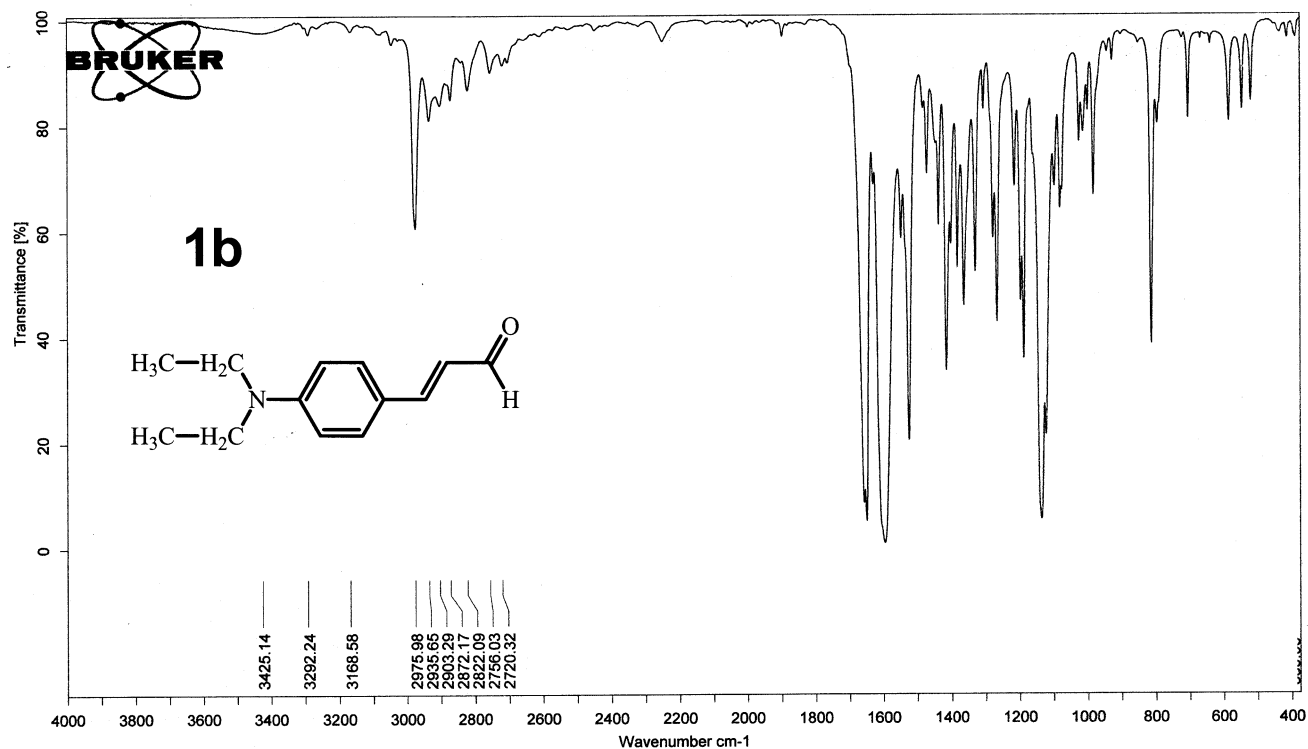
IR spectrum of **1a**



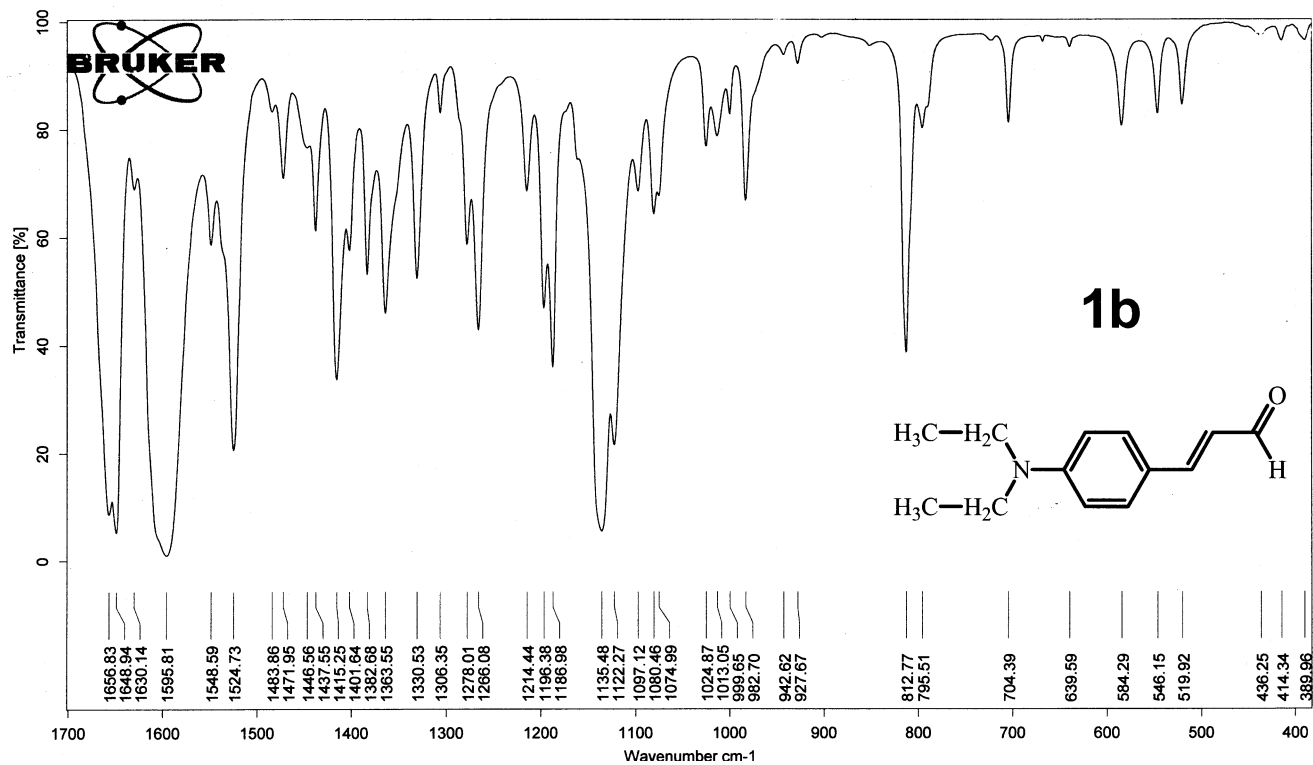
Enlarged spectrum in the range of 1700 - 400 cm^{-1} .



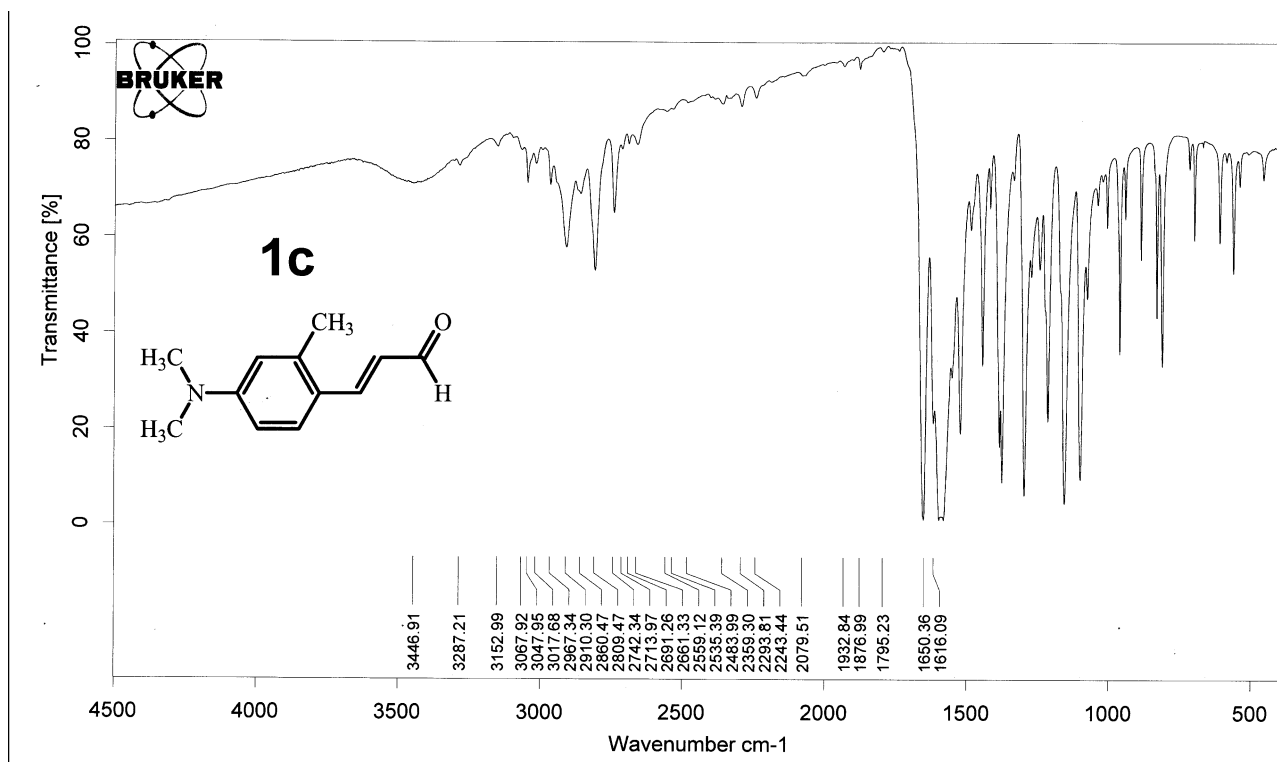
IR spectrum of **1b**



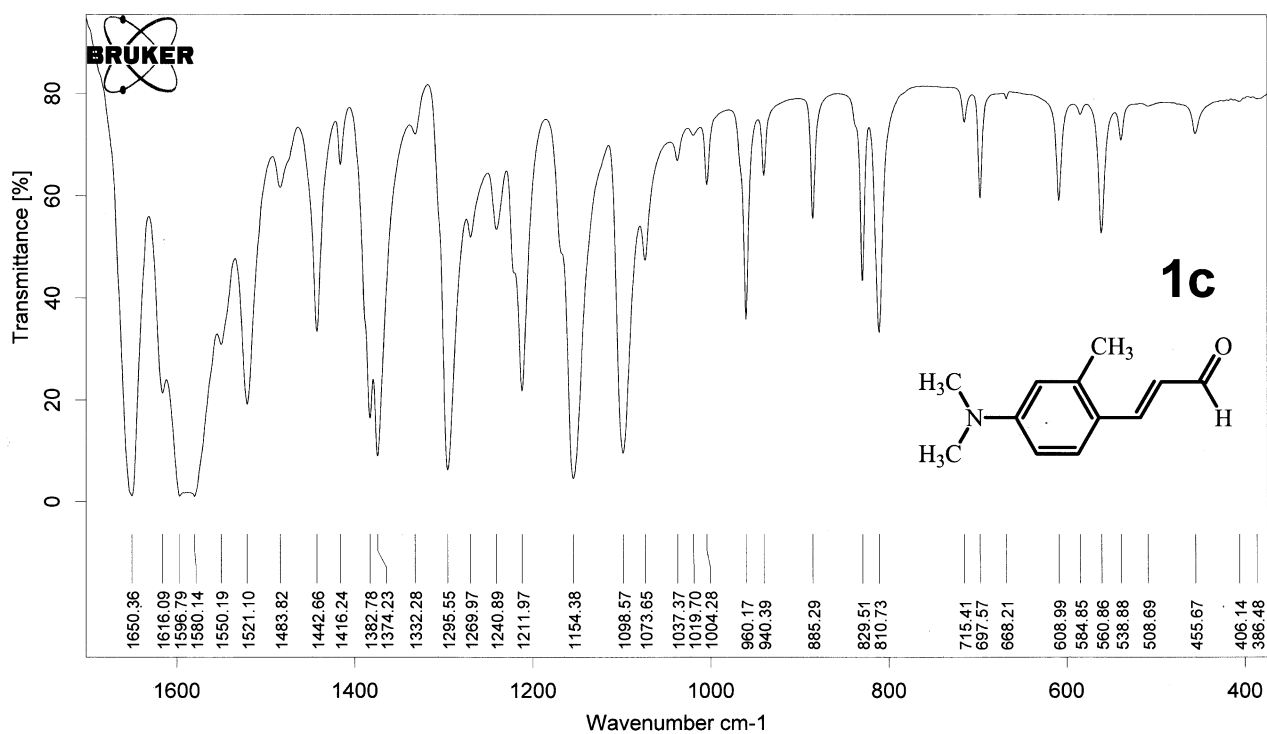
Enlarged spectrum in the range of 1700 - 400 cm^{-1} .



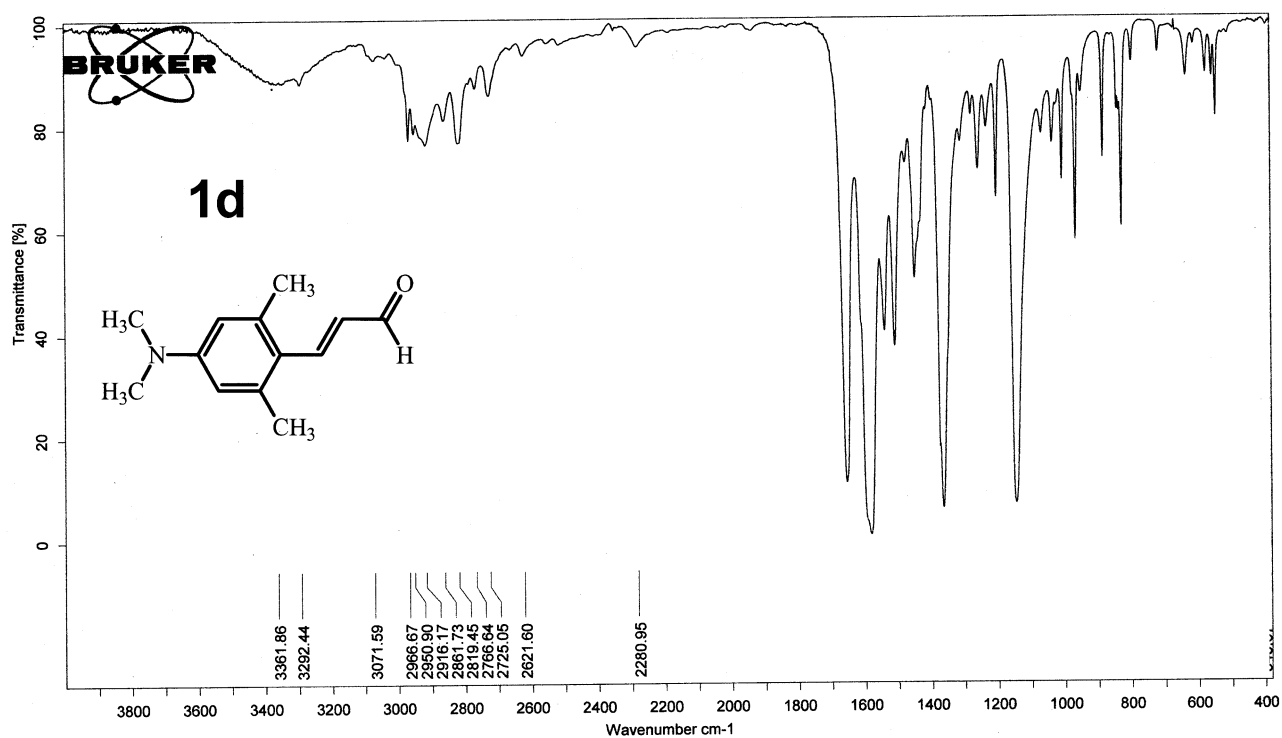
IR spectrum of **1c**



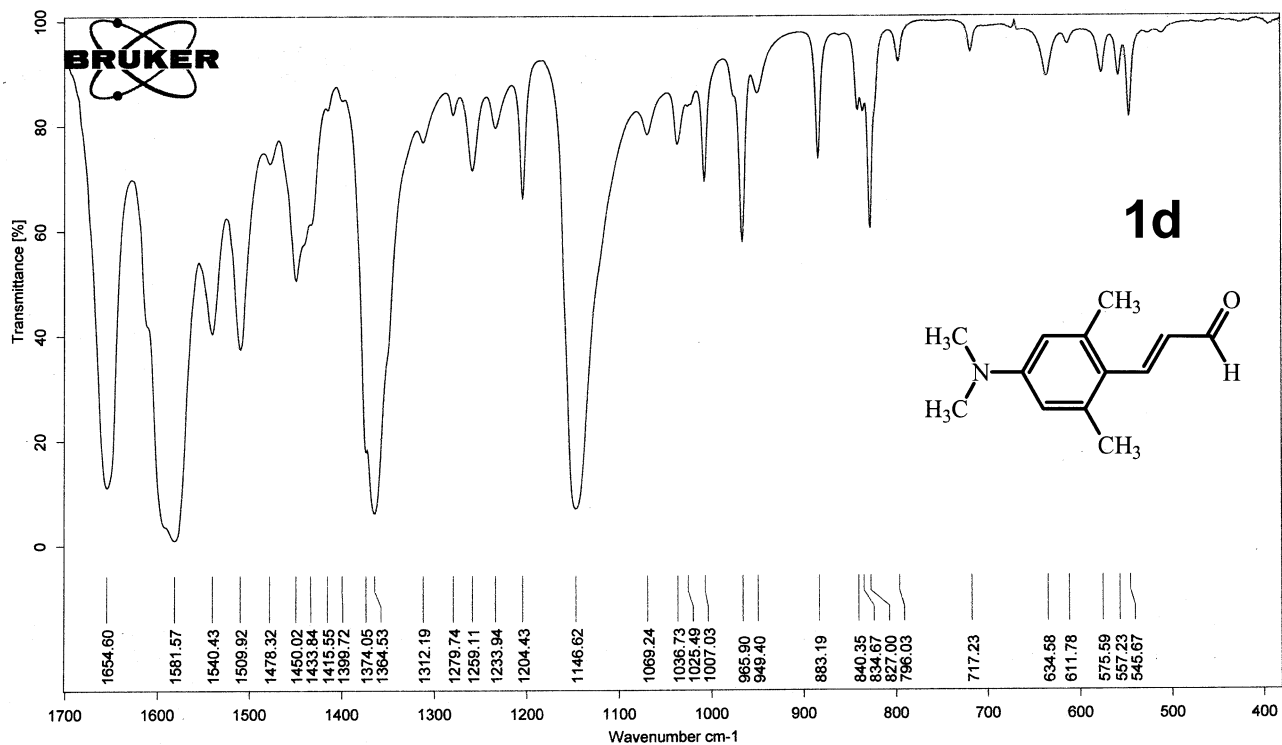
Enlarged spectrum in the range of 1700 - 400 cm^{-1} .



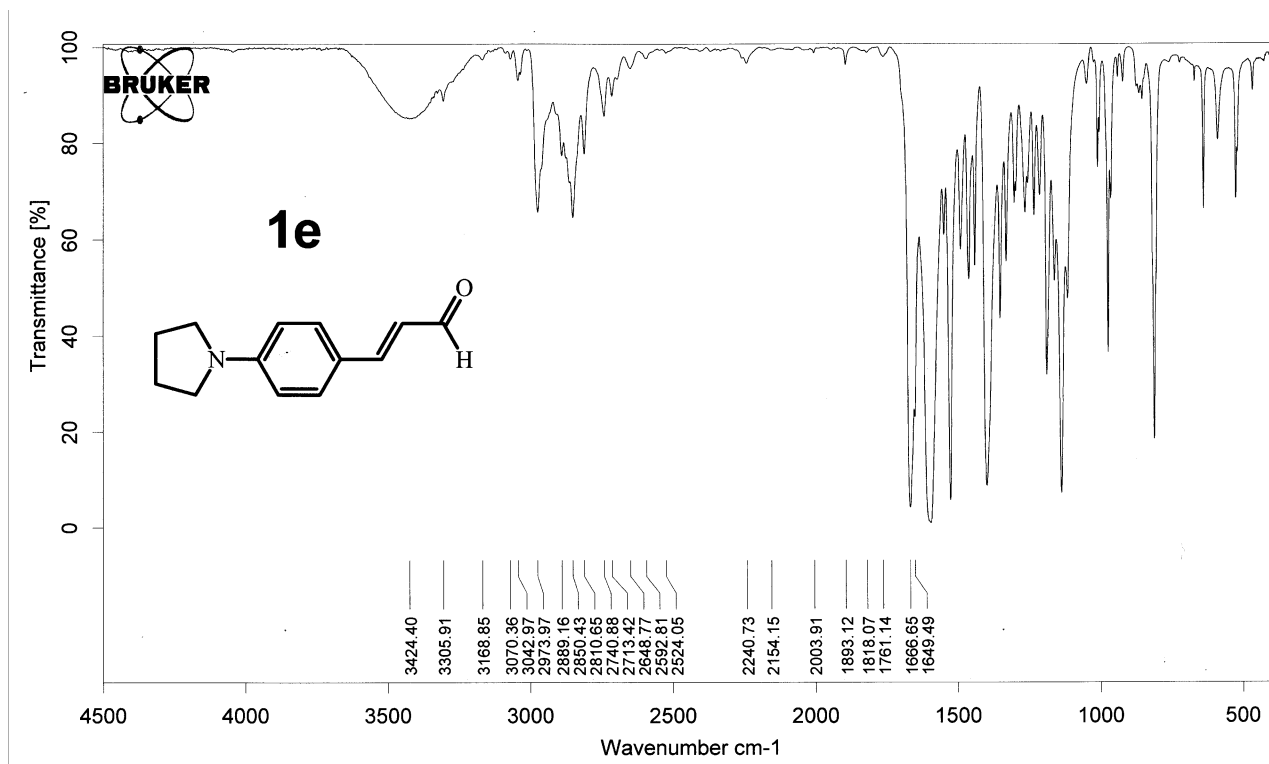
IR spectrum of 1d



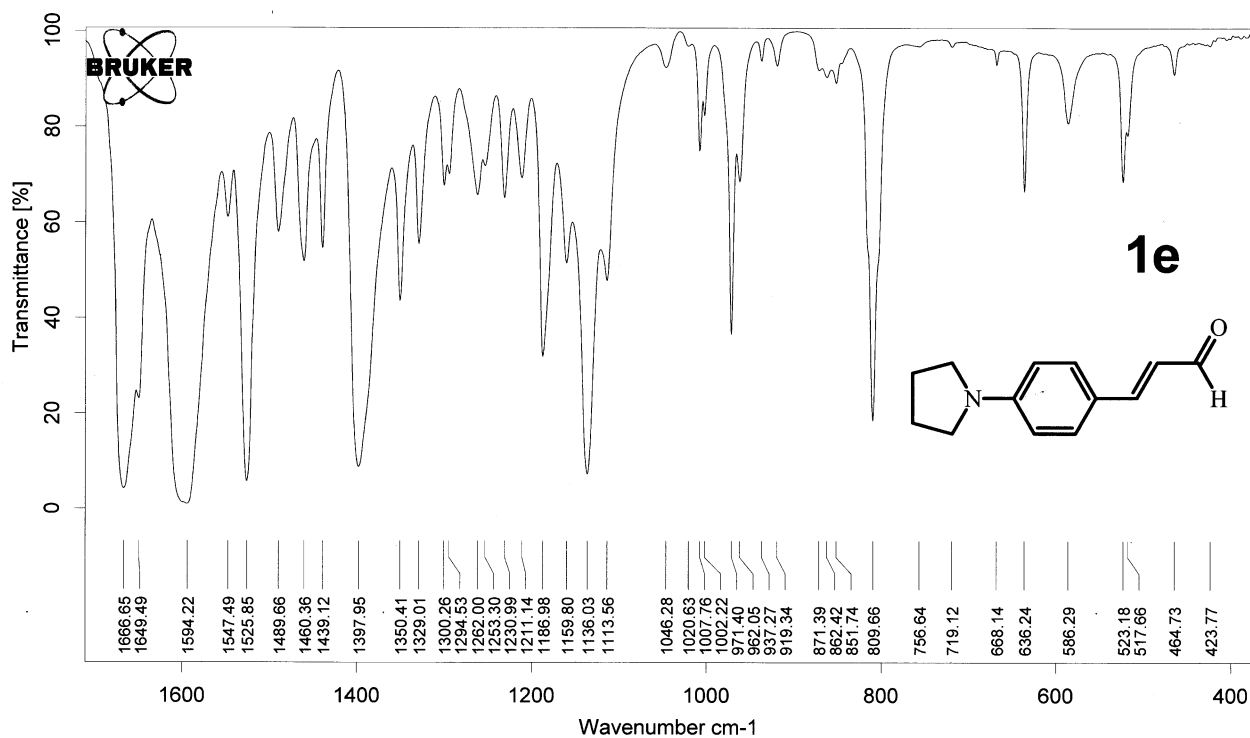
Enlarged spectrum in the range of 1700 - 400 cm⁻¹.



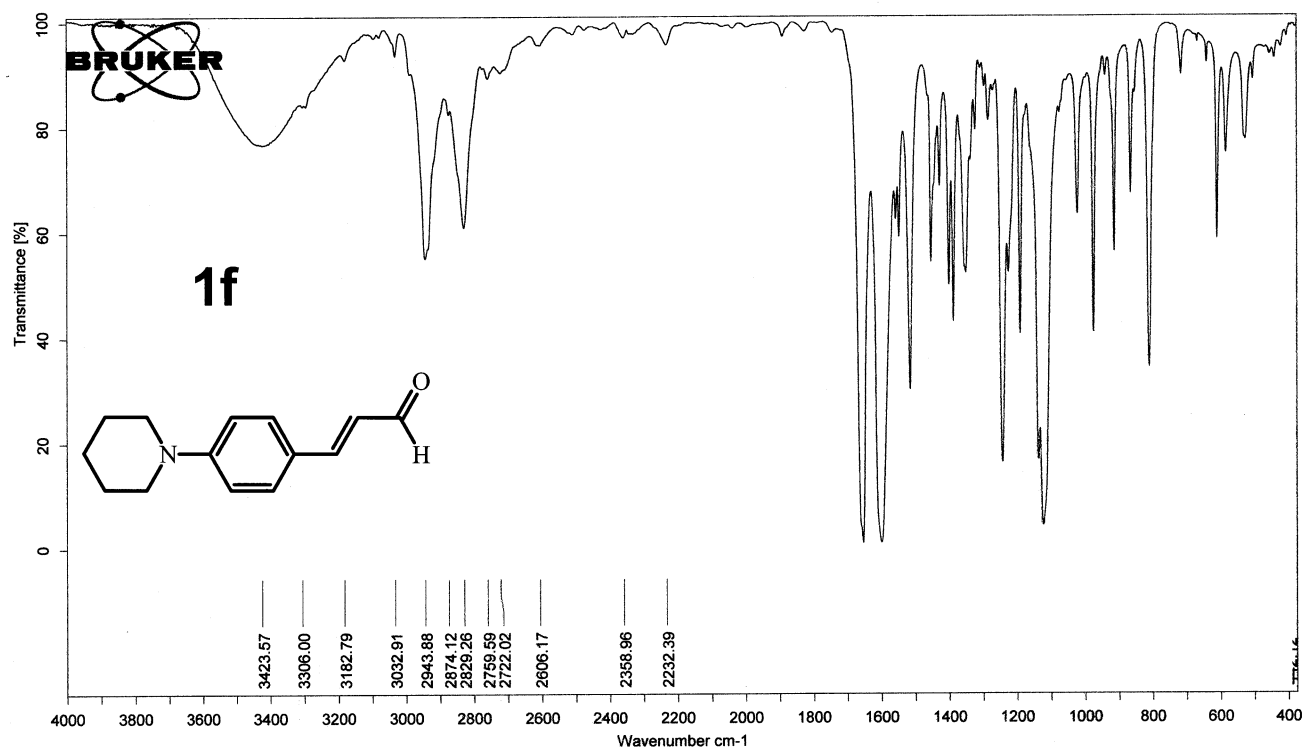
IR spectrum of 1e



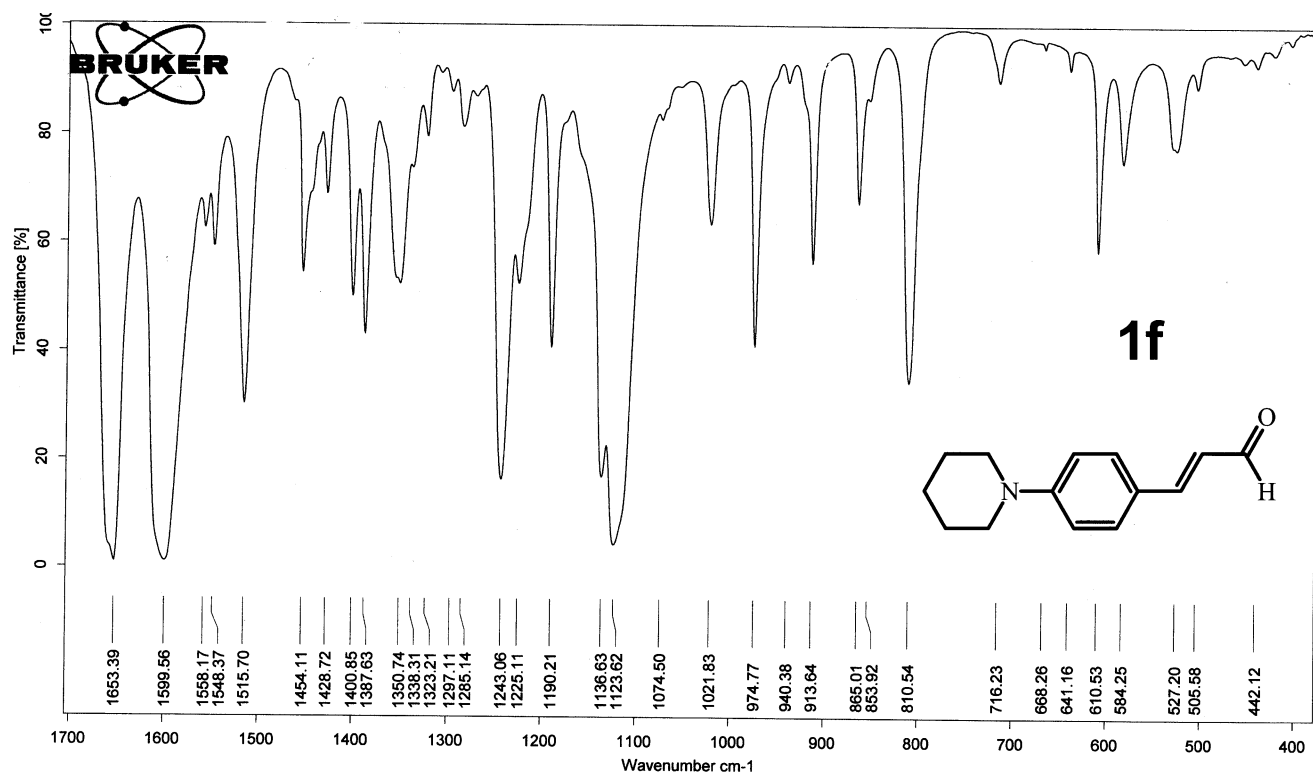
Enlarged spectrum in the range of 1700 - 400 cm⁻¹.



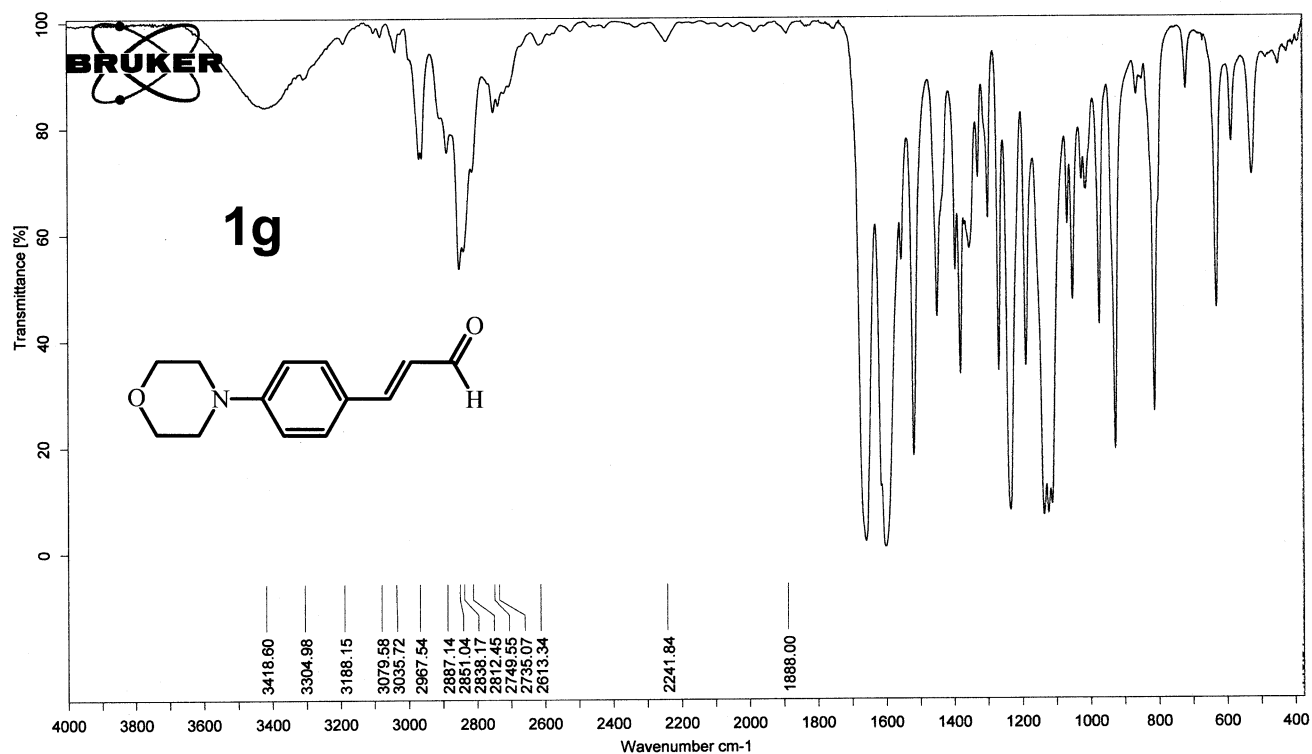
IR spectrum of **1f**



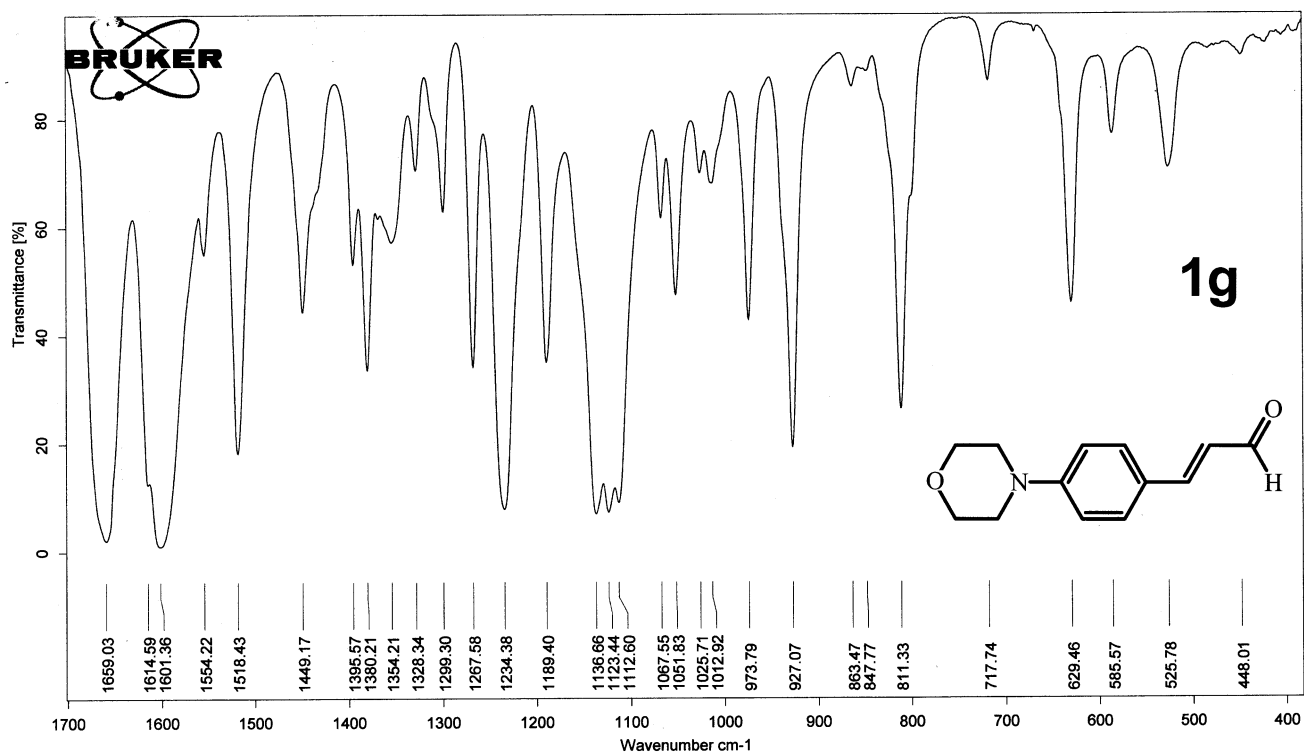
Enlarged spectrum in the range of 1700 - 400 cm^{-1} .



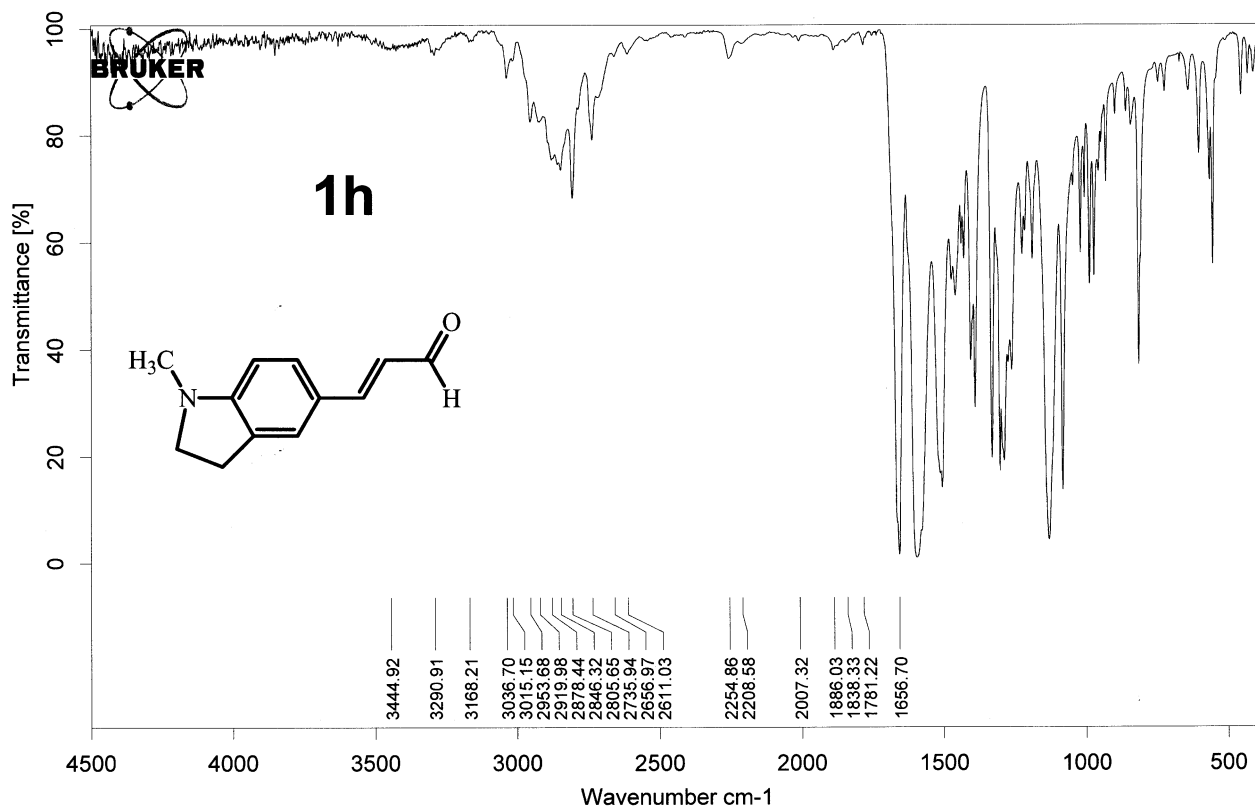
IR spectrum of **1g**



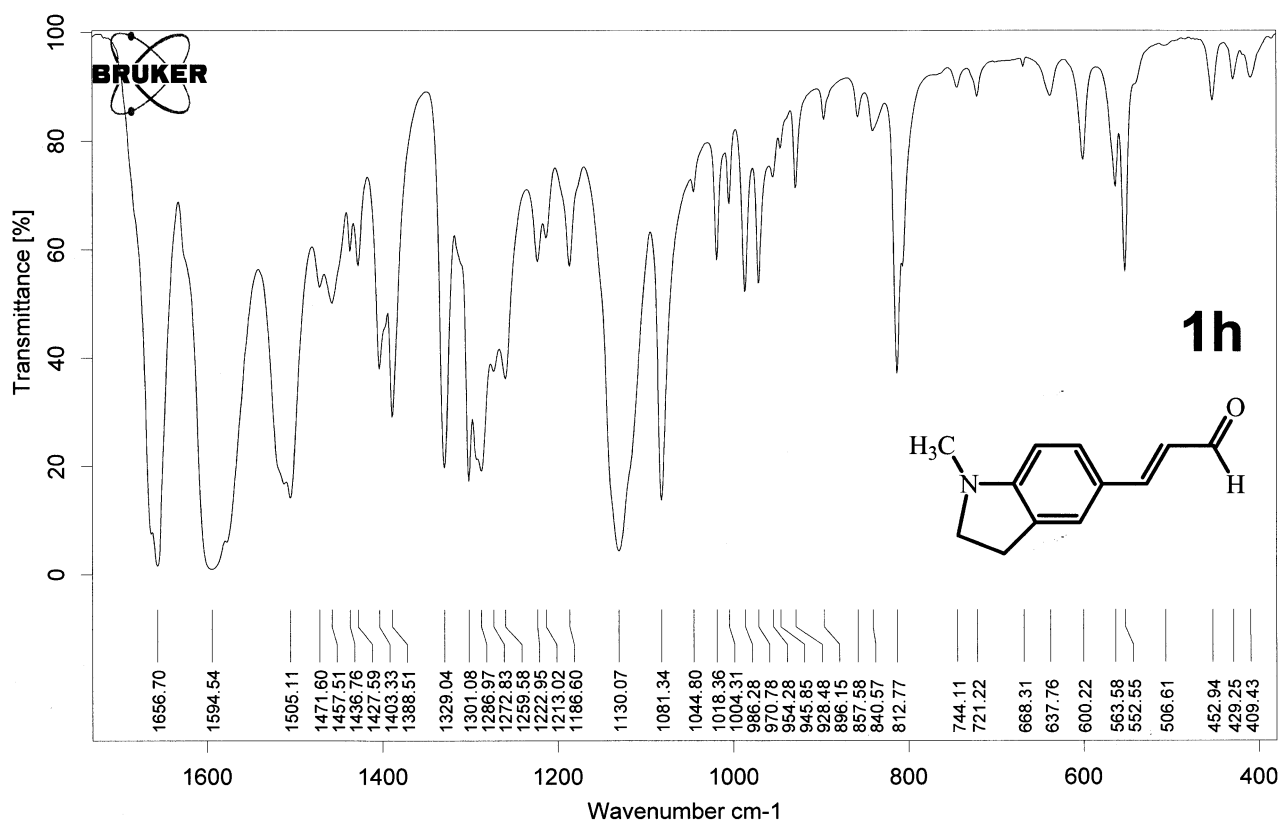
Enlarged spectrum in the range of 1700 - 400 cm⁻¹.



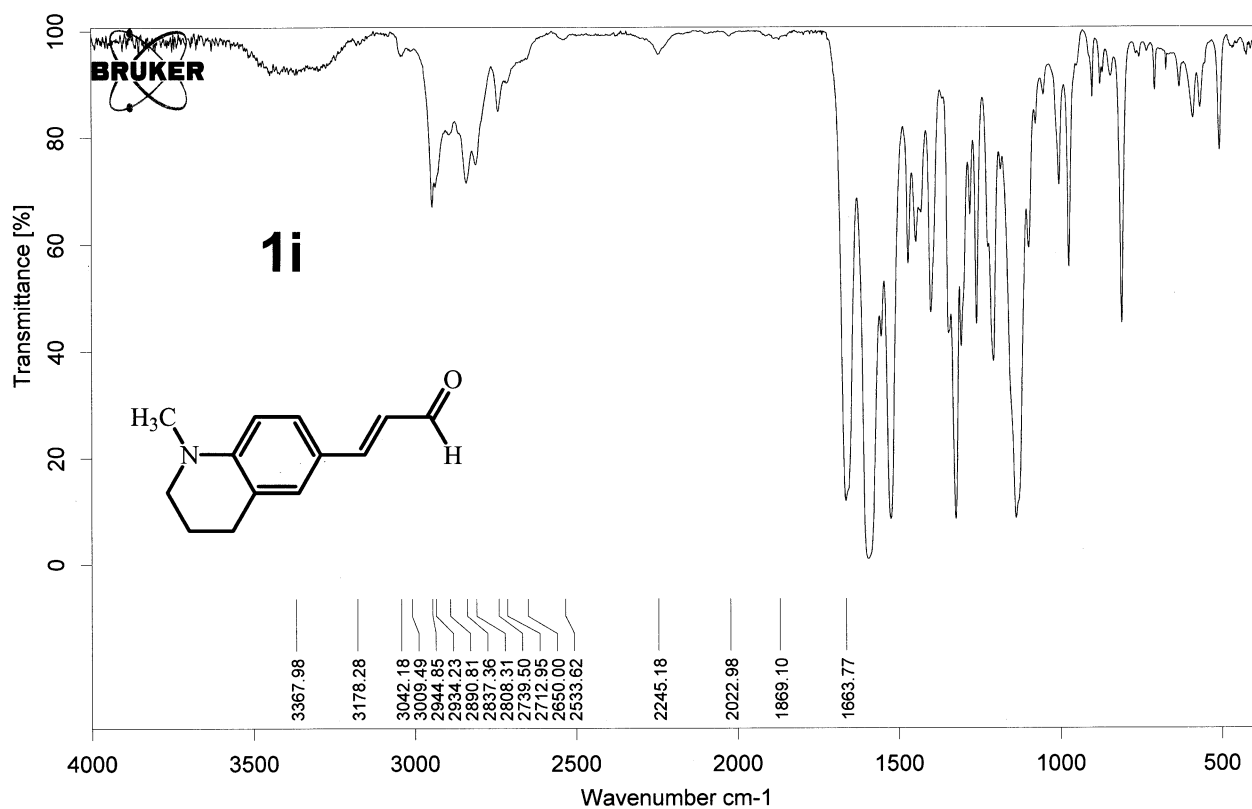
IR spectrum of **1h**



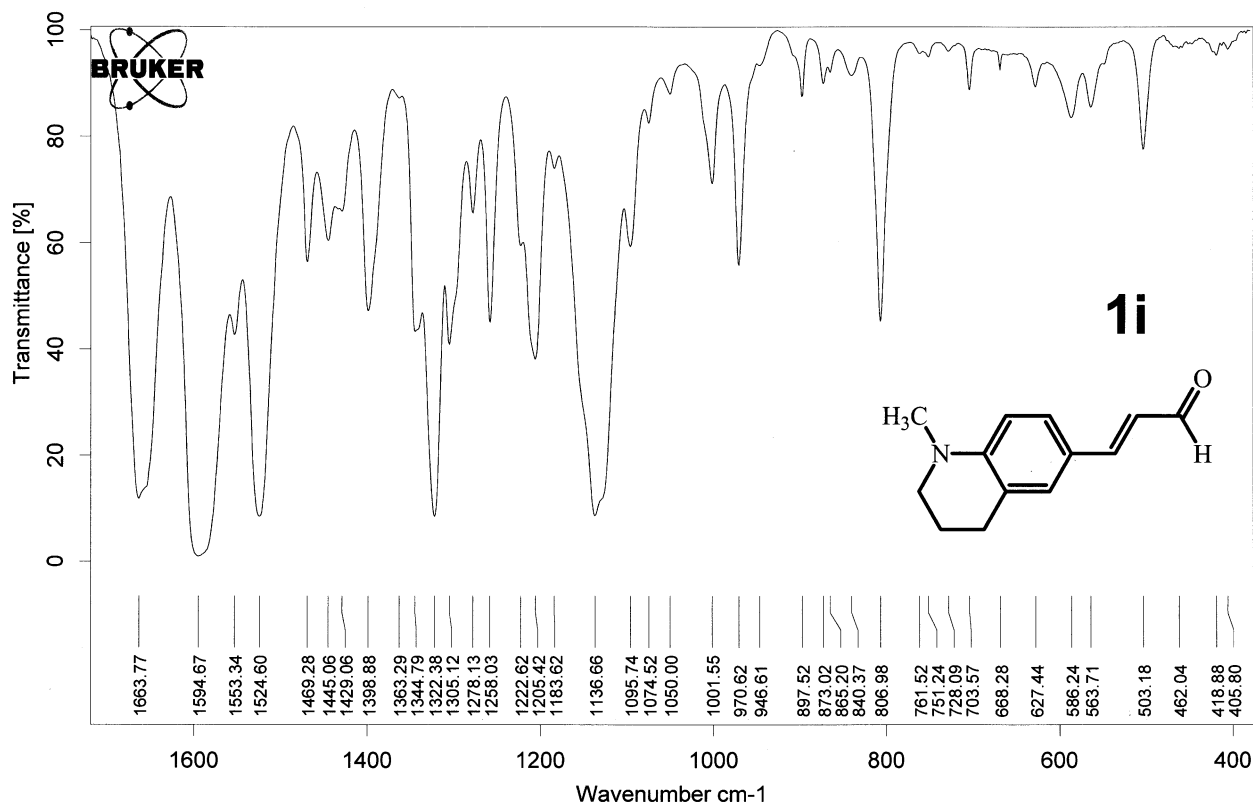
Enlarged spectrum in the range of 1700 - 400 cm^{-1} .



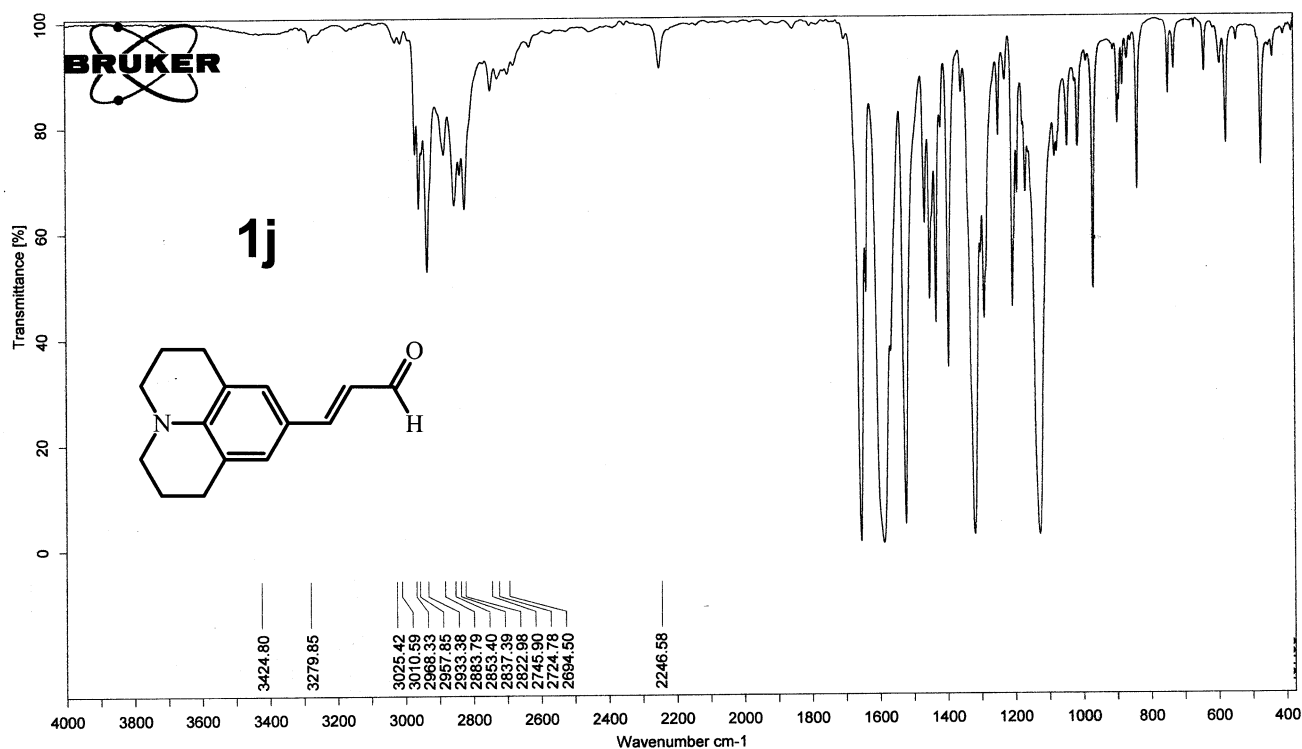
IR spectrum of **1i**



Enlarged spectrum in the range of 1700 - 400 cm^{-1} .



IR spectrum of **1j**



Enlarged spectrum in the range of 1700 - 400 cm⁻¹.

