

Analyzed by : \$Admin\$  
Analyzed : 10/26/2017 8:28:38 PM  
Sample Type : \$Organic\$  
Sample Name : 1  
Method File : D:\GCMS Method\Method\Extract.qgm

Sample Information

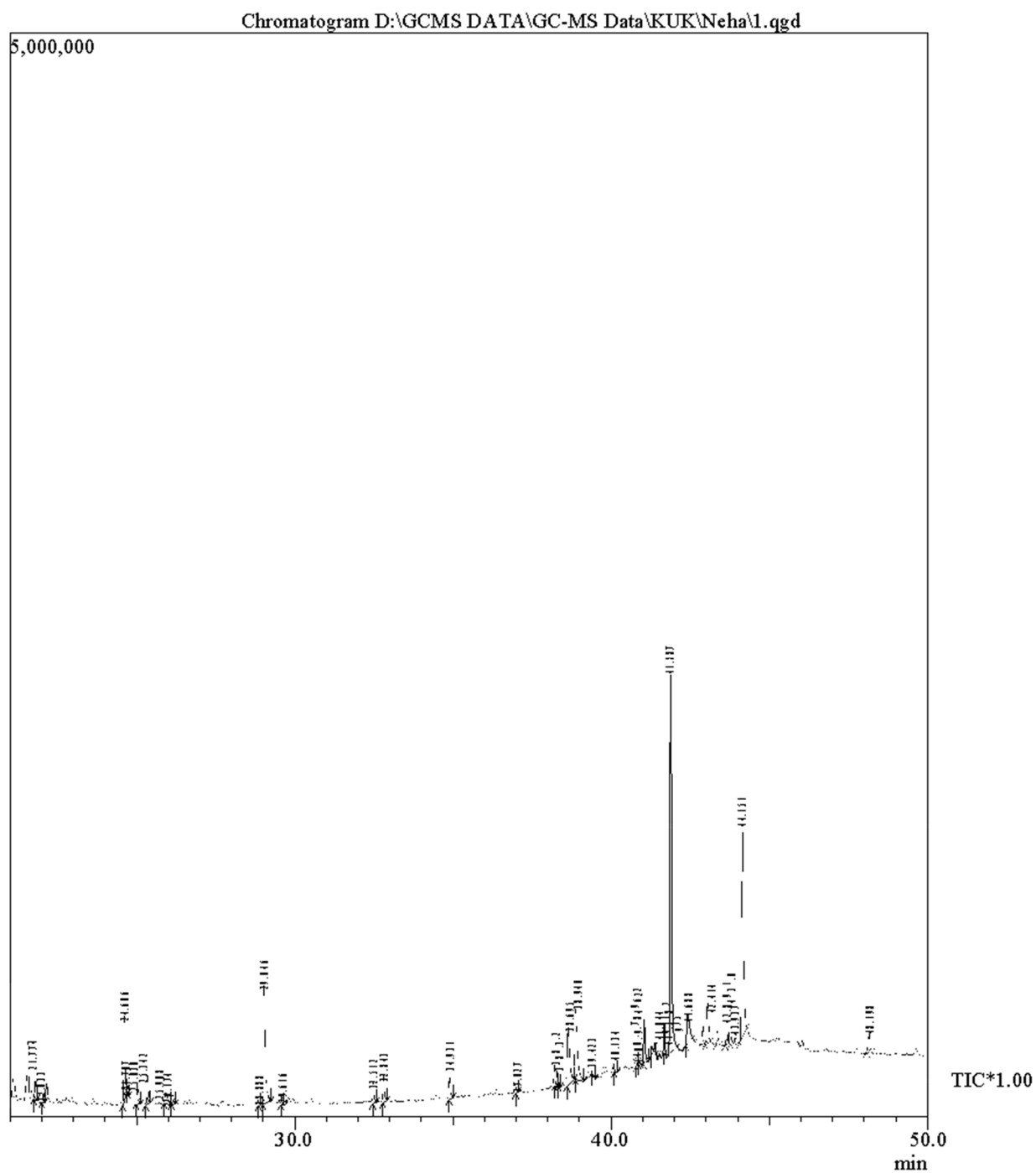


Figure S1. GC-MS chromatogram for Hexane extract of *C. camphora* leaves.

| Peak# | R.Time | Area     | Area%  | Name  |
|-------|--------|----------|--------|---|
| 1     | 21.774 | 274361   | 1.05   | 10-12-Pentacosadiynoic acid   |
| 2     | 22.033 | 79919    | 0.31   | (1R,7S,E)-7-Isopropyl-4,10-dimethylenecyclodec-5-enol                           |
| 3     | 24.606 | 1070284  | 4.12   | Neophytadiene   |
| 4     | 24.707 | 89030    | 0.34   | 2-Pentadecanone, 6,10,14-trimethyl-   |
| 5     | 25.030 | 305623   | 1.18   | Neophytadiene   |
| 6     | 25.342 | 388684   | 1.49   | 3,7,11,15-Tetramethyl-2-hexadecen-1-ol  |
| 7     | 25.908 | 220916   | 0.85   | 5,9,13-Pentadecatrien-2-one, 6,10,14-trimethyl-                                 |
| 8     | 26.174 | 186620   | 0.72   | Hexacosanoic acid   |
| 9     | 28.888 | 63462    | 0.24   | 6-Octadecenoic acid, methyl ester, (Z)-   |
| 10    | 29.046 | 2175913  | 8.37   | Phytol  |
| 11    | 29.616 | 100437   | 0.39   | 7-Octadecyne, 2-methyl-   |
| 12    | 32.512 | 270615   | 1.04   | 4,8,12,16-Tetramethylheptadecan-4-olide   |
| 13    | 32.843 | 343695   | 1.32   | 1,6,10,14,18,22-Tetracosahexaen-3-ol, 2,6,10,15,19,23- hexamethyl-              |
| 14    | 34.931 | 385560   | 1.48   | 1,2-Benzenedicarboxylic acid  |
| 15    | 37.027 | 83649    | 0.32   | Carbonic acid, eicosyl vinyl ester  |
| 16    | 38.263 | 227975   | 0.88   | 1,6,10,14,18,22-Tetracosahexaen-3-ol,2,6,10,15,19,23-hexamethyl-                |
| 17    | 38.357 | 167803   | 0.65   | Squalene  |
| 18    | 38.695 | 1458862  | 5.61   | alpha-Tocospiro B   |
| 19    | 38.940 | 1915635  | 7.37   | alpha-Tocospiro B   |
| 20    | 39.423 | 92771    | 0.36   | Fumaric acid  |
| 21    | 40.134 | 118510   | 0.46   | Octahydro-1-(2-Octyldecyl)-Pentalene  |
| 22    | 40.792 | 80681    | 0.31   | Octahydro-1-(2-Octyldecyl)-Pentalene  |
| 23    | 40.862 | 69276    | 0.27   | gamma-Tocopherol  |
| 24    | 40.942 | 51956    | 0.20   | Oxirane, hexadecyl-   |
| 25    | 41.044 | 741122   | 2.85   | gamma-Tocopherol  |
| 26    | 41.275 | 132227   | 0.51   | Stigmast-5-en-3-ol  |
| 27    | 41.389 | 72726    | 0.28   | 1-Bromooctdecane  |
| 28    | 41.688 | 424021   | 1.63   | 9-Octadecenethioic acid, 12-hydroxy-, S-t-butyl ester                           |
| 29    | 41.887 | 6727366  | 25.87  | Vitamin E   |
| 30    | 42.414 | 939445   | 3.61   | (+)-Sesamin   |
| 31    | 42.891 | 304590   | 1.17   | Soleanesol  |
| 32    | 43.039 | 778812   | 2.99   | (24R)-5-Ergosten-3beta-ol   |
| 33    | 43.358 | 233181   | 0.90   | Pentacyclo[9.1.0.0(2,4).0(5,7).0(8,10)]dodecane, 3,3,6,6,9,9,12,12-octamethoxy- |
| 34    | 43.646 | 315179   | 1.21   | Nonacosan-14-one  |
| 35    | 43.810 | 99714    | 0.38   | 1,6,10,14,18,22-Tetracosahexaen-3-ol, 2,6,10,15,19,23-hexmethyl-, (all-E)-      |
| 36    | 43.937 | 126148   | 0.49   | Tetracontane-1,40-diol  |
| 37    | 44.151 | 4481873  | 17.23  | gamma-Sitosterol  |
| 38    | 48.198 | 409006   | 1.57   | Tris(2,4-di-tert-butylphenyl) phosphate   |
|       |        | 26007647 | 100.00 |   |

**Table S1.** GC-MS spectral analysis of hexane fraction of *C. camphora* leaves.