

IPN
4/12/2019

File: M1-EVD2
Sample: M1-EVD2
Instrument: JEOL GCmate
Inlet: Direct Probe

Date Run: 04-12-2019 (Time Run: 12:22:34)

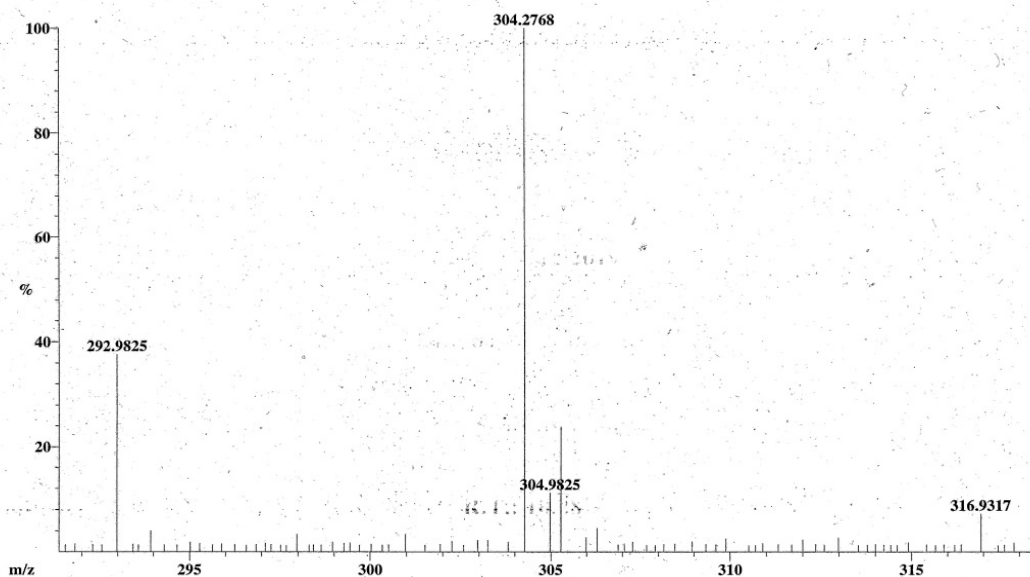
Ionization mode: EI+

Scan: 769

R.T.: 10.28

Base: m/z 304; 4.6%FS TIC: 325408

#Ions: 201



Selected Isotopes : $H_{0-36}C_{0-21}O_{0-1}$

Error Limit : 5 ppm

<u>Measured</u> <u>Mass</u>	<u>% Base</u>	<u>Formula</u>	<u>Calculated</u> <u>Mass</u>	<u>Error</u>
304.2768	100.0%	$C_{21}H_{36}O$	304.2766	0.6

Supplementary Figure S1. AA characterization. Mass Spectrum (EI⁺) of fraction 68. Spectral data. Molecular formula was determined as $C_{22}H_{36}O_3$ by EI⁺-MS, the base peak ($m/z = 304.2768$) represents the loss of a carboxyl group.