

# A Multimethodological Characterization of *Cannabis sativa* L. Inflorescences from Seven Dioecious Cultivars Grown in Italy: The Effect of Different Harvesting Stages

Mattia Spano <sup>1,†</sup>, Giacomo Di Matteo <sup>1,†</sup>, Cinzia Ingallina <sup>1</sup>, Bruno Botta <sup>1</sup>, Deborah Quaglio <sup>1</sup>,  
Francesca Ghirga <sup>1</sup>, Silvia Balducci <sup>1</sup>, Silvia Cammarone <sup>1</sup>, Enio Campiglia <sup>2</sup>, Anna Maria Giusti <sup>3</sup>,  
Giuliana Vinci <sup>4</sup>, Mattia Rapa <sup>4</sup>, Salvatore Ciano <sup>4</sup>, Luisa Mannina <sup>1,\*</sup> and Anatoly P. Sobolev <sup>5</sup>

<sup>1</sup> Department of Chemistry and Technology of Drugs, Sapienza University of Rome, Piazzale Aldo Moro 5, 00185 Rome, Italy; mattia.spano@uniroma1.it (M.S.); giacomo.dimatteo@uniroma1.it (G.D.M.); cinzia.ingallina@uniroma1.it (C.I.); bruno.botta@uniroma1.it (B.B.); deborah.quaglio@uniroma1.it (D.Q.); francesca.ghirga@uniroma1.it (F.G.); silvia.balducci@uniroma1.it (S.B.); silvia.cammarone@uniroma1.it (S.C.)

<sup>2</sup> Department of Agricultural and Forest Sciences, University of Tuscia, Via San Camillo de Lellis snc, 01100 Viterbo, Italy; campigli@unitus.it

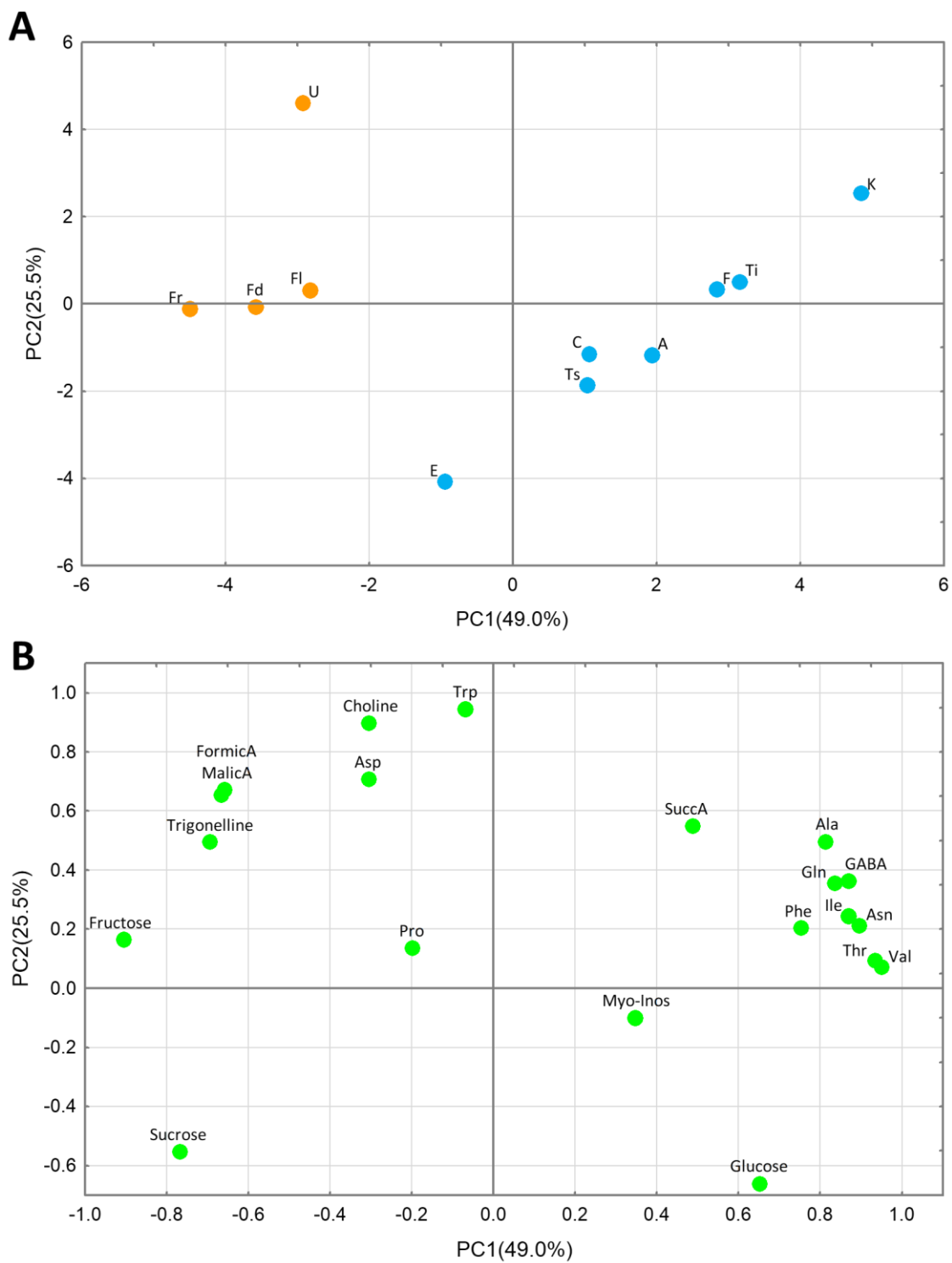
<sup>3</sup> Department of Experimental Medicine, Sapienza University of Rome, P.le Aldo Moro 5, 00185 Rome, Italy; annamaria.giusti@uniroma1.it

<sup>4</sup> Department of Management, Sapienza University of Rome, via del Castro Laurenziano 9, 00161 Rome, Italy; giuliana.vinci@uniroma1.it (G.V.); mattia.rapa@uniroma1.it (M.R.); salvatore.ciano@uniroma1.it (S.C.)

<sup>5</sup> Institute for Biological Systems, Magnetic Resonance Laboratory “Segre-Capitani”, CNR, Via Salaria Km 29.300, 00015 Monterotondo, Italy; anatoly.sobolev@cnr.it

\* Correspondence: luisa.mannina@uniroma1.it;

† These authors contributed equally to this work.



**Figure S1.** PCA maps obtained comparing September inflorescences samples of monoecious and dioecious *Cannabis sativa* L. cultivars: (A) scores plot and (B) loadings plot relative to PC1 and PC2 (PCs); PC1 and PC2 represent 49.0% and 25.5% of the total variance, respectively.

**Table S1.** Pearson correlation coefficient (r) between total polyphenolic compounds and antioxidant activity. \*Significant at  $p \leq 0.05$ .

|   | <b>stage I</b> |         | <b>stage II</b> |          | <b>stage III</b> |        |
|---|----------------|---------|-----------------|----------|------------------|--------|
|   | DPPH           | ABTS    | DPPH            | ABTS     | DPPH             | ABTS   |
| <b>Kompolti<br/>Tisza<br/>Tiborszallasi</b> | -0,1930        | -0,7012 | 0,7743          | -0,9113* | 0,8196*          | 0,3324 |
| <b>Carmagnola<br/>Antal</b>                 | -0,6214        | 0,9733* | 0,8923          | -0,9352  | -0,3155          | 0,7053 |
| <b>Fibranova<br/>Eletta<br/>Campana</b>     | 0,8605         | 0,4858  | 0,8063          | 0,8478   | -0,6590          | 0,9338 |