

Article

# Ballistic Impact Behavior of Glass/Epoxy Composite Laminates Embedded with Shape Memory Alloy (SMA) Wires

Luv Verma <sup>1</sup>, J Jefferson Andrew <sup>1,2,\*</sup>, Srinivasan M. Sivakumar <sup>1</sup>, Gurusamy Balaganesan <sup>3</sup>, Srikanth Vedantam <sup>4</sup> and Hom Nath Dhakal <sup>5,\*</sup>

<sup>1</sup> Department of Applied Mechanics, IIT Madras, Chennai 600036, India

<sup>2</sup> Department of Mechanical Engineering, Khalifa University, Abu Dhabi 127788, UAE

<sup>3</sup> Department of Mechanical Engineering, IIT Jammu, Jammu 181 221, India

<sup>4</sup> Department of Engineering Design, IIT Madras, Chennai 600036, India

<sup>5</sup> School of Mechanical and Design Engineering, Anglesea Road, Anglesea Building, University of Portsmouth, Portsmouth PO1 3DJ, U.K.

\* Correspondence: hom.dhakal@port.ac.uk

## Supplementary Materials

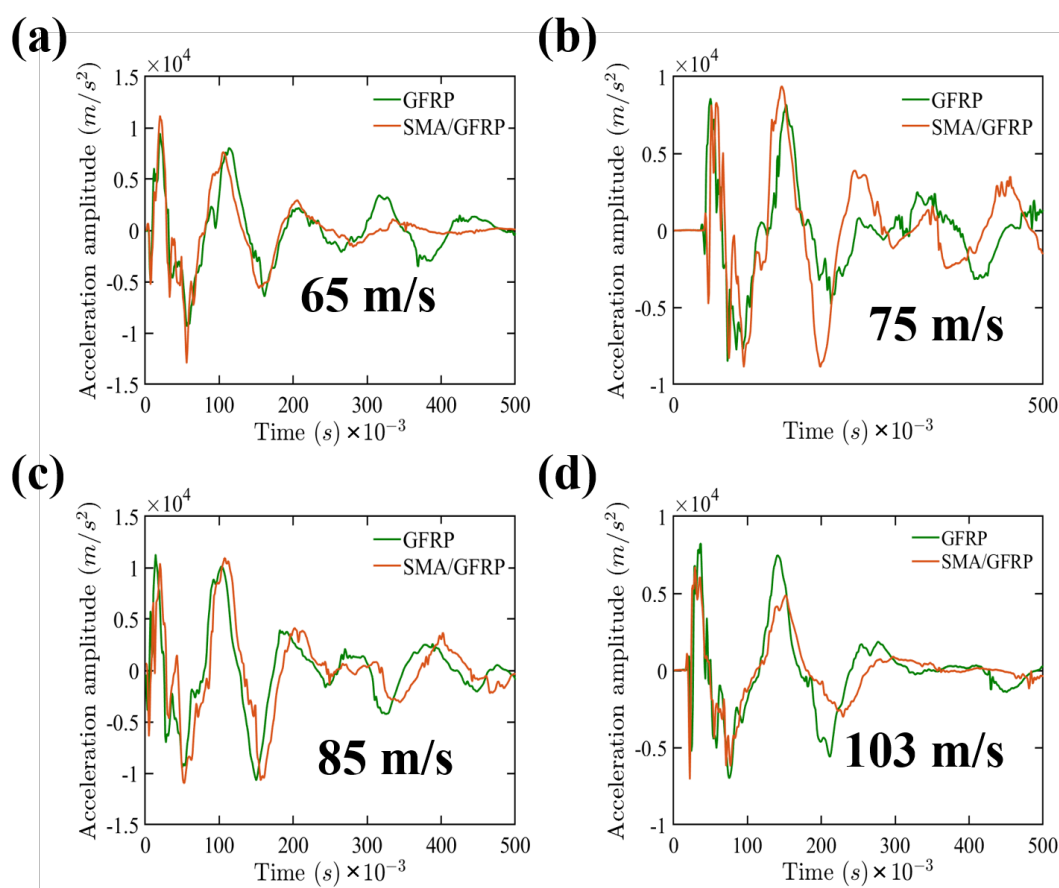


Figure S1: Acceleration-time response for the GFRP and SMA/GFRP specimens at different impact velocities (a) 65 m/s, (b) 75 m/s, (c) 85 m/s and (d) 103 m/s.