

Figura S3. SDS-PAGE (4-20%) of pistachio (A) and cashew (B). Excised band proteins for identification are marked in red. (20µg protein/lane)

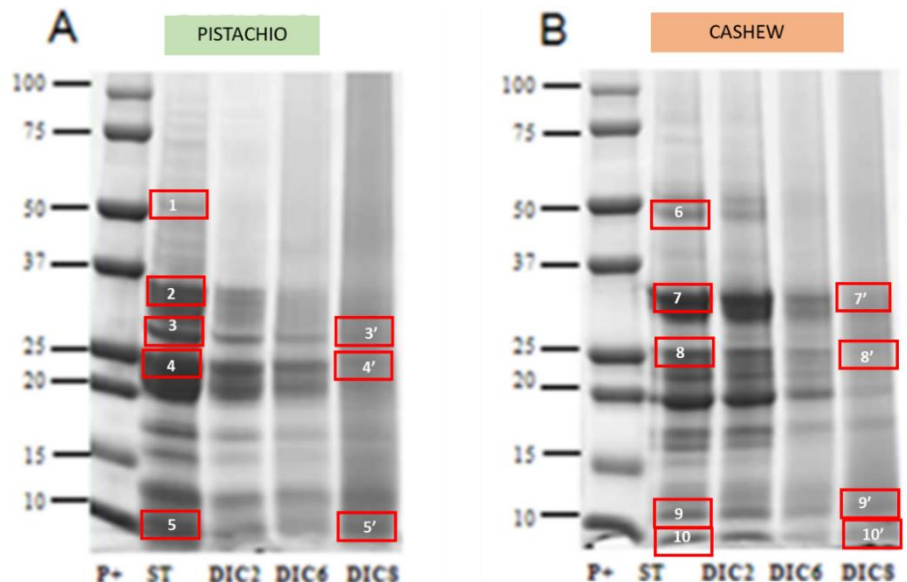


Table S1. Proteins separated by SDS-PAGE and identified by MALDI-TOF/TOF. Pistachio and cashew proteins from untreated and DIC8 treated samples (7 bar, 120 sec) identified by MALDI-TOF/TOF (PMF) or (PMF+MS-MS spectra)#

Band No.	No. access	Protein identification	Mascot score*	% Coverage	Mass (Da)	Matched peptides	Ion score
1	B7P073	Pis v 2.01 (11S <i>P.vera</i>)	215	51	56716	22	
1	B7SLJ1	Pis v 5.01/ (11S <i>P.vera</i>)	89	30	53896	13	
2	B4X640	Pis v 3.01 (7S <i>P.vera</i>)	94	26	60306	15	
2	B7SLJ1	Pis v 5.01 (11S <i>P.vera</i>)	54	18	53896	9	
3	B7P073	Pis v 2.01 (11S <i>P.vera</i>)	122	37	56716	14	
4	B7P073	Pis v 2.01 (11S <i>P.vera</i>)	159	45	56716	17	
5	B7P072	Pis v 1 (2S <i>P.vera</i>)	81	30	17792	9	
3'	B7P074	Pis v 2.02 /(11S <i>P.vera</i>)	103	38	53550	14	
4'	B7P073	Pis v 2.01 (11S <i>P.vera</i>)	124	34	56716	15	
5'#	B7P072	Pis v 1 (2S <i>P.vera</i>)	116	22	17792	--	74
6	Q8GZL6	Ana o 2.01 (11S <i>A. occidentale</i>)	79	25	52420	11	
6	Q8L5L6	Ana o 1.01 (7S <i>A. occidentale</i>)	68	26	62284	13	
7	Q8GZL6	Ana o 2.01 (11S <i>A. occidentale</i>)	79	24	52420	11	
8	Q8GZL6	Ana o 2.01 (11S <i>A. occidentale</i>)	49	35	52420	16	
9	Q8H2B8	Ana o 3 (2S <i>A. occidentale</i>)	59	55	16781	9	
10#	Q8H2B8	Ana o 3 (2S <i>A. occidentale</i>)	122	36	16781	--	61
7'	Q8GZL6	Ana o 2.01 (11S <i>A. occidentale</i>)	140	37	52420	18	
8'	Q8GZL6	Ana o 2.01 (11S <i>A. occidentale</i>)	150	34	52420	19	
9'	Q8GZL6	Ana o 2.01 (11S <i>A. occidentale</i>)	62	19	52,420	10	
10'	Q8H2B8	Ana o 3 (2S <i>A. occidentale</i>)	55	36	16,335	7	

* Protein scores greater than 49 are significant ($P < 0.05$). Protein score is $-10 \cdot \log(P)$, where P is the probability that the observed match is a random event.