

Supplementary Materials

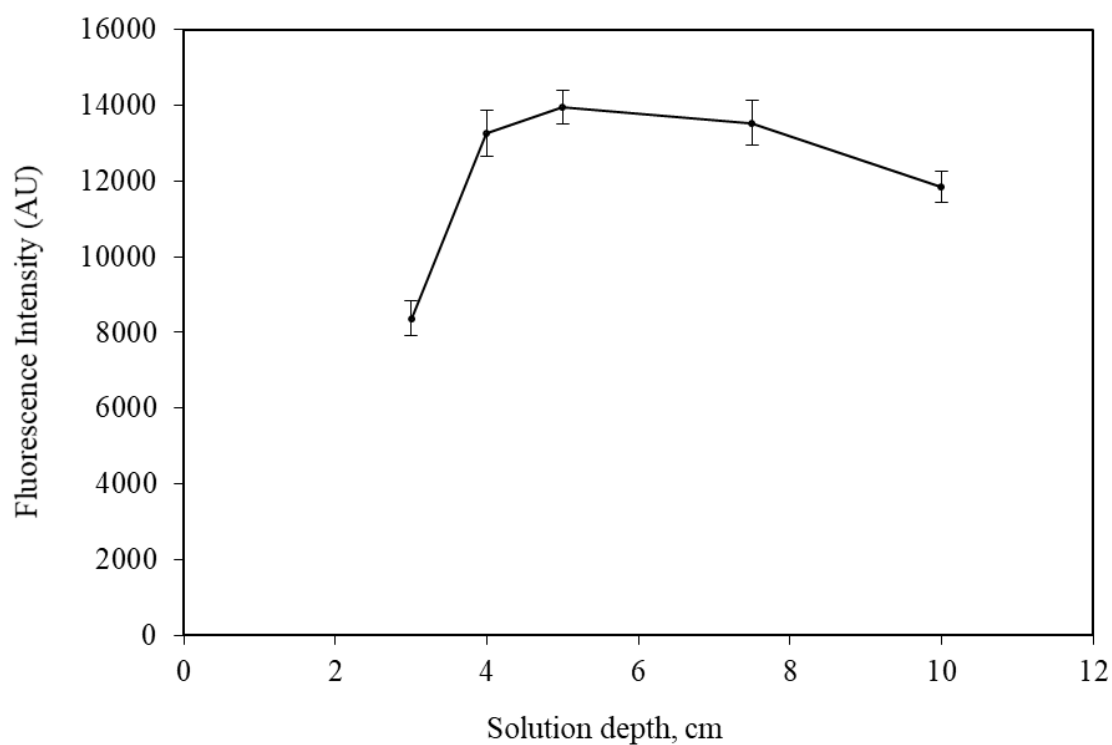


Figure S1. Effect of solution depth in purge-vessel on intensity of $5.0 \mu\text{g NH}_4^+$. Error bars were calculated based on standard deviation ($\pm 1s$). NaOH volume = $1000 \mu\text{L}$ (1.0 mol L^{-1} NaOH); Trapping solution: $300 \mu\text{L}$, 0.001 mol L^{-1} HCl; Purge-gas flow rate = 75 mL min^{-1} .

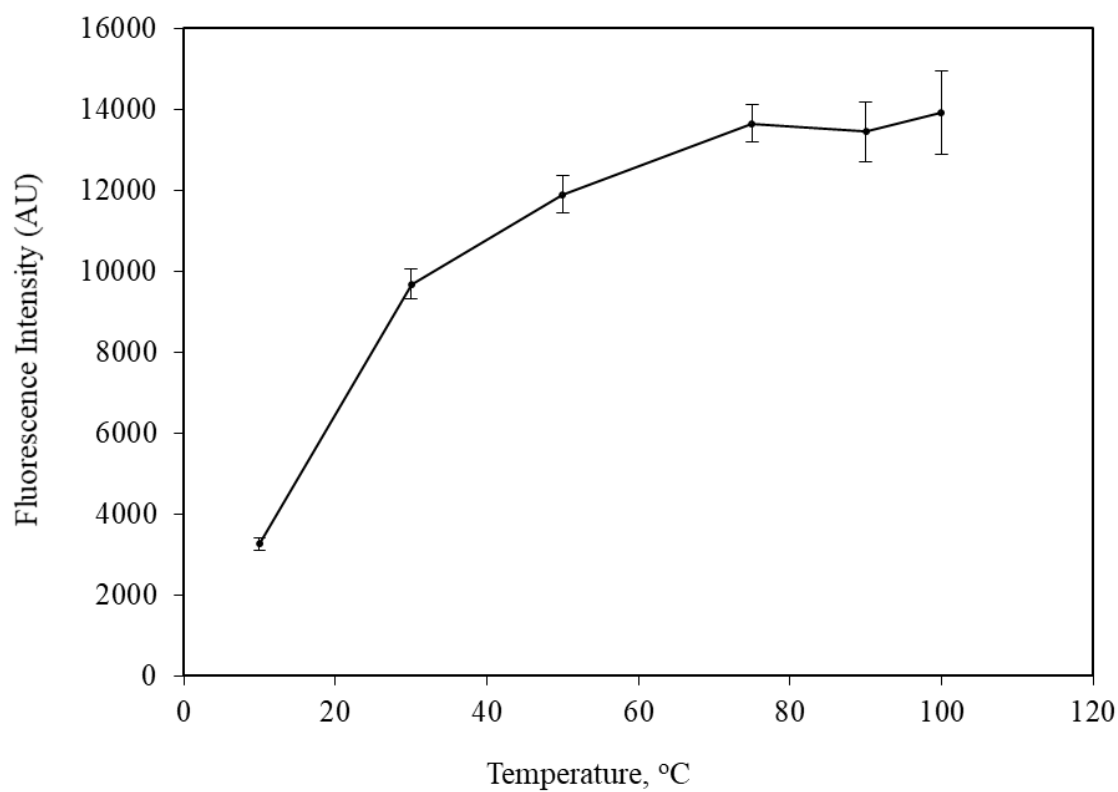


Figure S2. Effect of purge-gas flow rate of the on the sensitivity of the method. Error bars were calculated based on standard deviation ($\pm 1s$). Other parameters as in Fig. S1. .

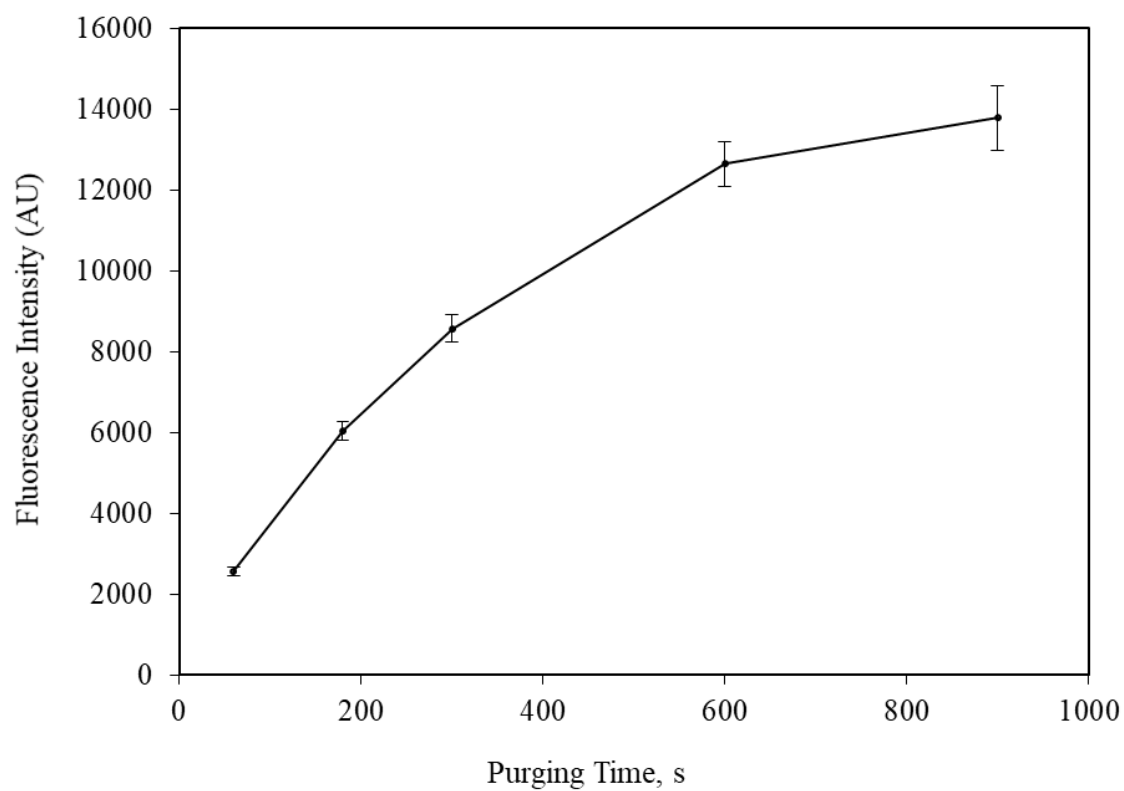


Figure S3. Effect of purging time on the fluorescence intensity of $50.0 \mu\text{g L}^{-1} \text{NH}_4^+$. Error bars were calculated based on standard deviation ($\pm 1\text{s}$). All other parameters as in Fig. S1..