

Supplementary Materials

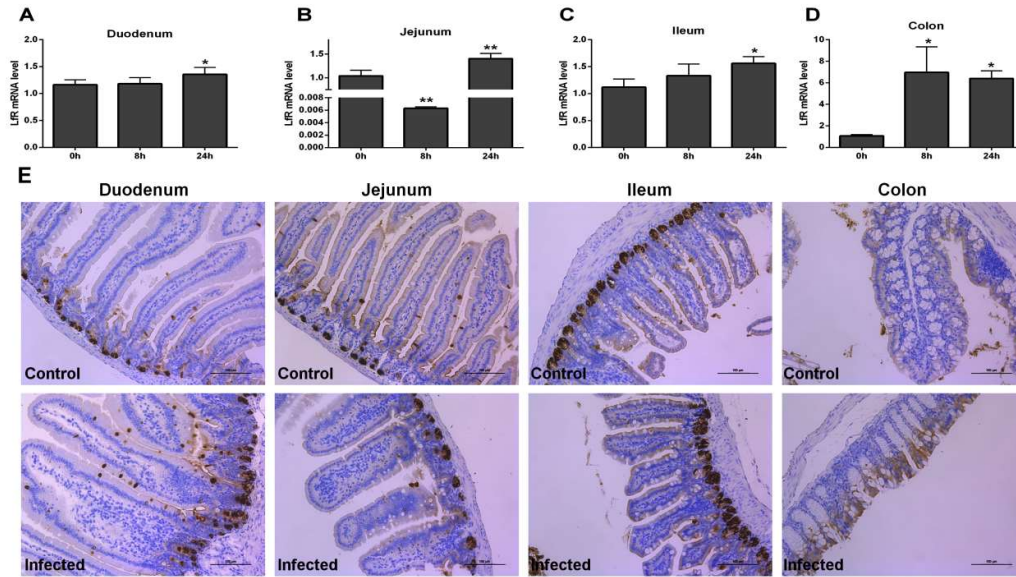


Figure S1. LfR expression in mice intestine. **A-D** *E. coli* K88 infection changed the mRNA expression of lactoferrin in mice intestine including duodenum, jejunum, ileum and colon with time differences. **E** Representative immunohistology-stained section from duodenum, jejunum, ileum and colon. Original magnification 400×. Formalin-fixed, paraffin-embedded 5-mm cross-sections were stained with a primary antibody to LfR. Data are presented as the mean \pm SD, n = 6. The values were normalized against the level of GAPDH gene. *Indicates a significant difference ($p < 0.05$) and **Indicate an extreme significant difference ($p < 0.01$) compared to that of control group or 0 h post challenge.