

APPENDIX A

Enhancing the immune response of a nicotine vaccine with synthetic small “non-natural” peptides.

Hoang-Thanh Le, Nya L. Fraleigh, Jordan D. Lewicky, Justin Boudreau, Paul Dolinar, Nitin Bhardwaj, Francisco Diaz-Mitoma, Sabine Montaut, Sarah Fallahi, and Alexandrine L. Martel.

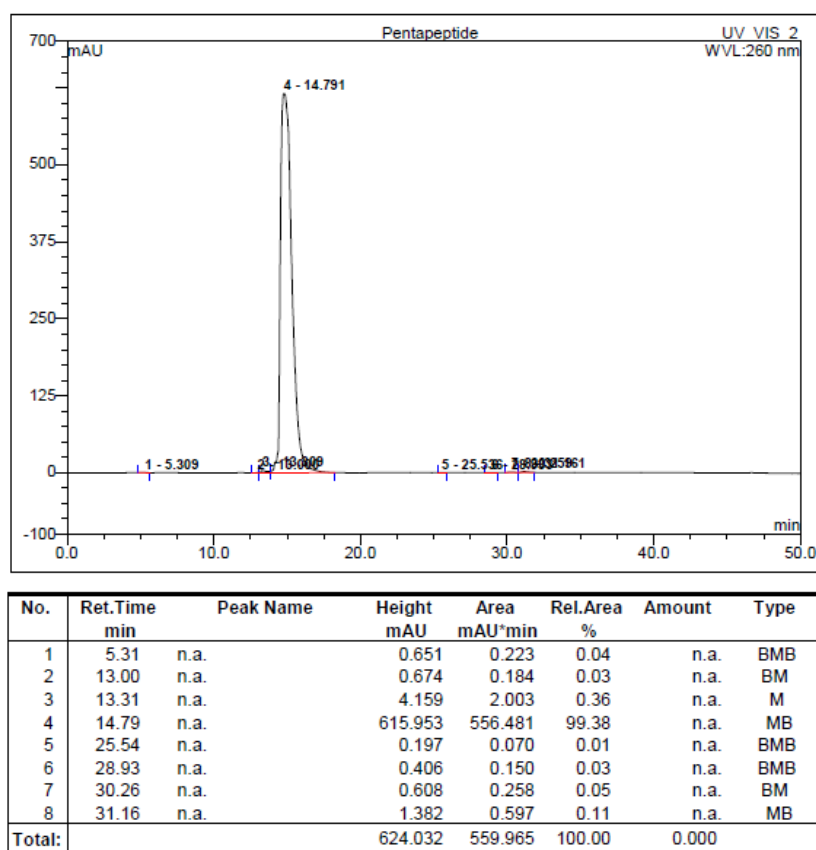


Figure S1. KWCEC peptide HPLC results (99.38% purity).

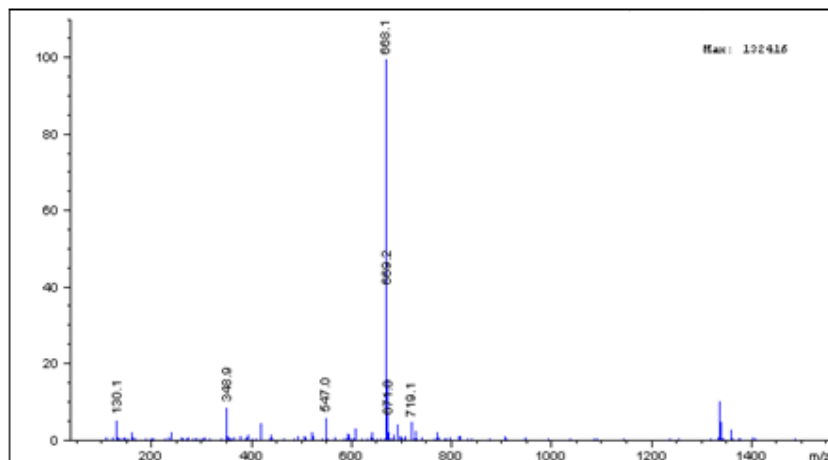
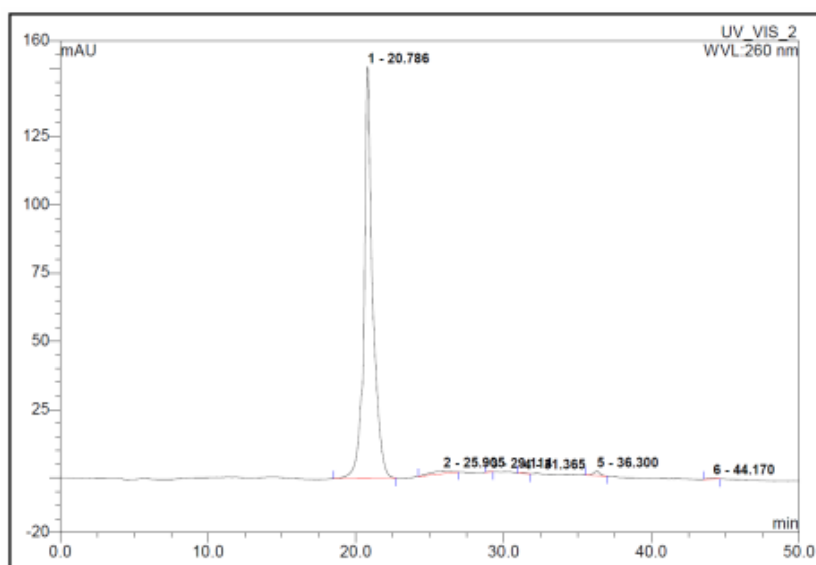


Figure S2. KWCEC peptide ESI-MS results.



No.	Ret.Time min	Peak Name	Height mAU	Area mAU*min	Rel.Area %	Amount	Type
1	20.79	n.a.	150.743	102.805	97.32	n.a.	BMB
2	25.90	n.a.	0.912	1.601	1.52	n.a.	BMB
3	29.11	n.a.	0.142	0.052	0.05	n.a.	BMB
4	31.37	n.a.	0.378	0.132	0.12	n.a.	BMB
5	36.30	n.a.	1.788	0.848	0.80	n.a.	BMB
6	44.17	n.a.	0.351	0.200	0.19	n.a.	BMB
Total:			154.312	105.639	100.00	0.000	

Figure S3. KWCECKFFKFFG peptide HPLC results (97.32% purity).

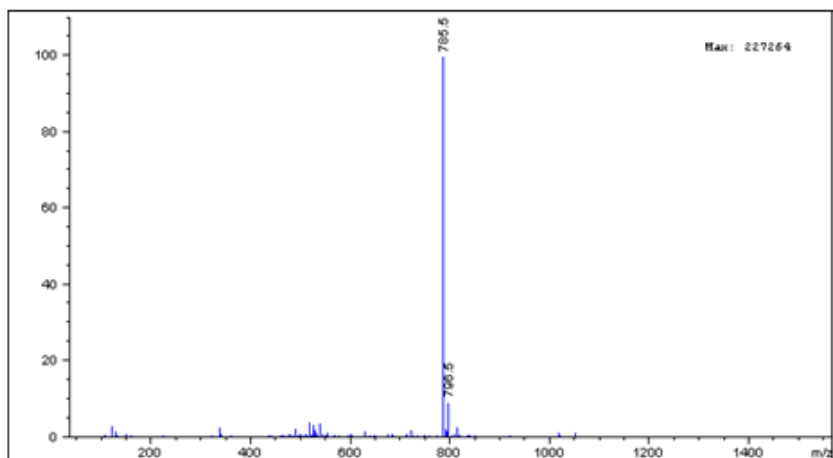
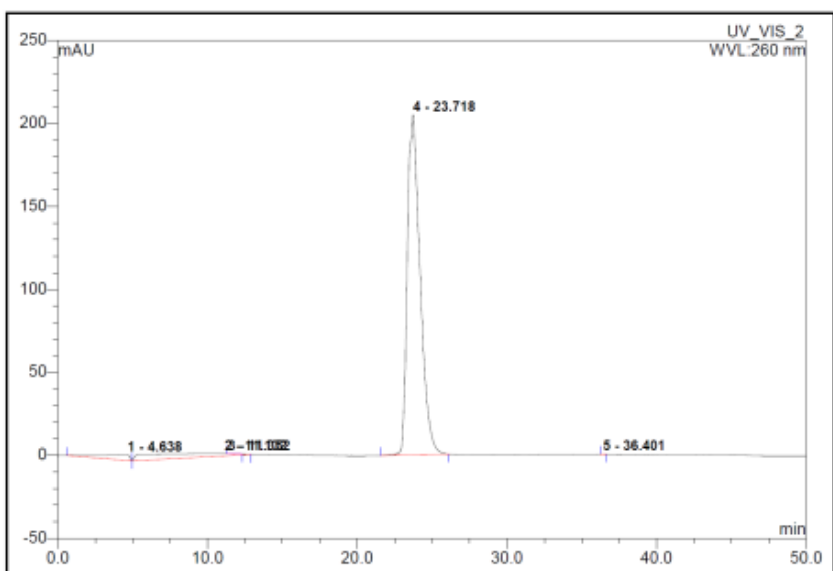


Figure S4. KWCECKFFKFFG peptide ESI-MS results.



No.	Ret.Time min	Peak Name	Height mAU	Area mAU*min	Rel.Area %	Amount	Type
1	4.64	n.a.	3.347	6.939	3.06	n.a.	BMB
2	11.13	n.a.	1.374	17.067	7.52	n.a.	BMB
3	11.35	n.a.	0.052	0.084	0.04	n.a.	Rd
4	23.72	n.a.	205.059	202.815	89.37	n.a.	BMB
5	36.40	n.a.	0.122	0.024	0.01	n.a.	BMB
Total:			209.954	226.929	100.00	0.000	

Figure S5. KWCECEFFEFFG peptide HPLC results (89.37% purity).

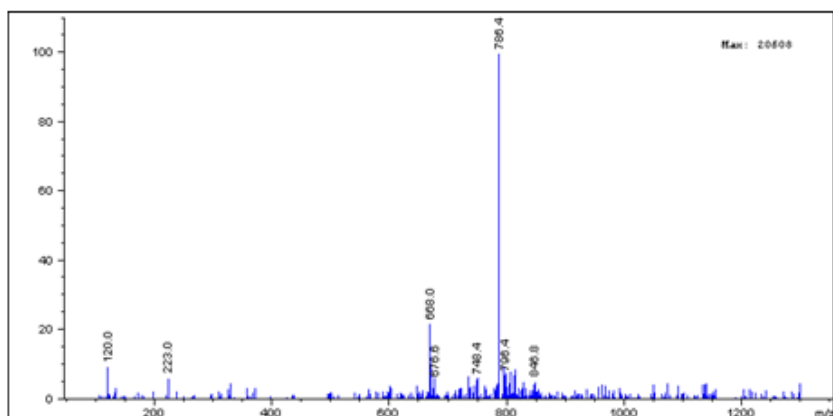


Figure S6. KWCECEFFEFG peptide ESI-MS results.

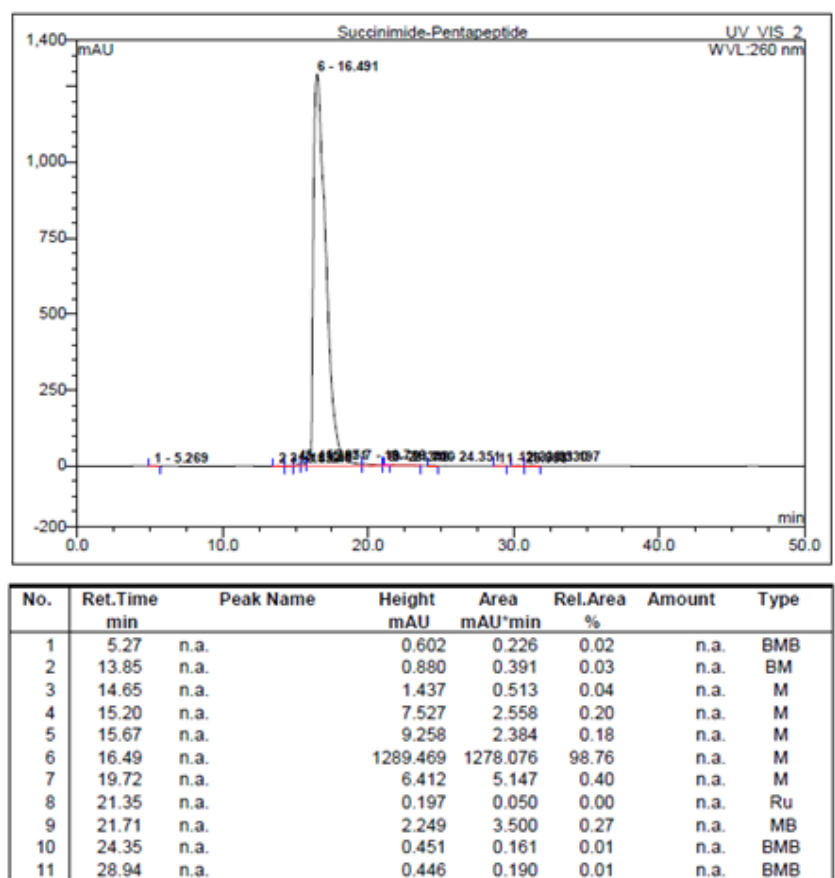


Figure S7. Succinamic KWCEC peptide HPLC results (98.76% purity).

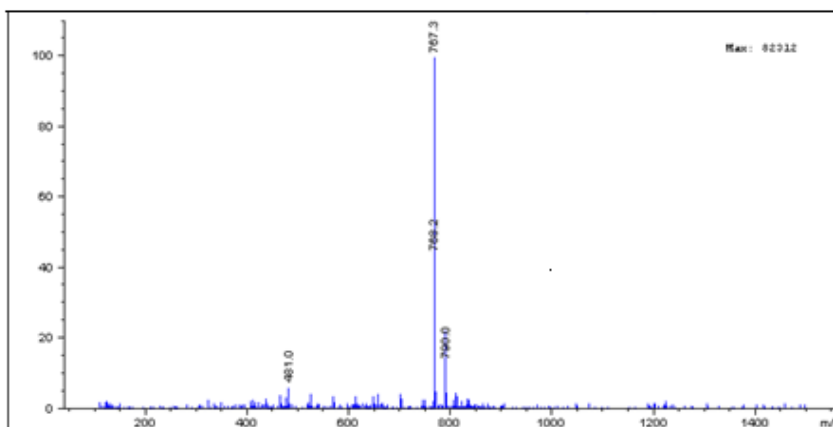


Figure S8. Succinamic KWCEC peptide ESI-MS results.