

Table S1. Correlations between TPC, DPPH, FRAP and sum of all measured compounds by UPLC-MS/MS and GC-MS methods

Correlations	TPC	DPPH	FRAP	SUM UPLC-MS/MS	SUM GC-MS
TPC	1				
DPPH	0.104	1			
FRAP	0.259	0.096	1		
SUM UPLC-MS/MS	0.384	-0.048	0.171	1	
SUM GC-MS	-0.365	0.098	-0.762	-0.055	1

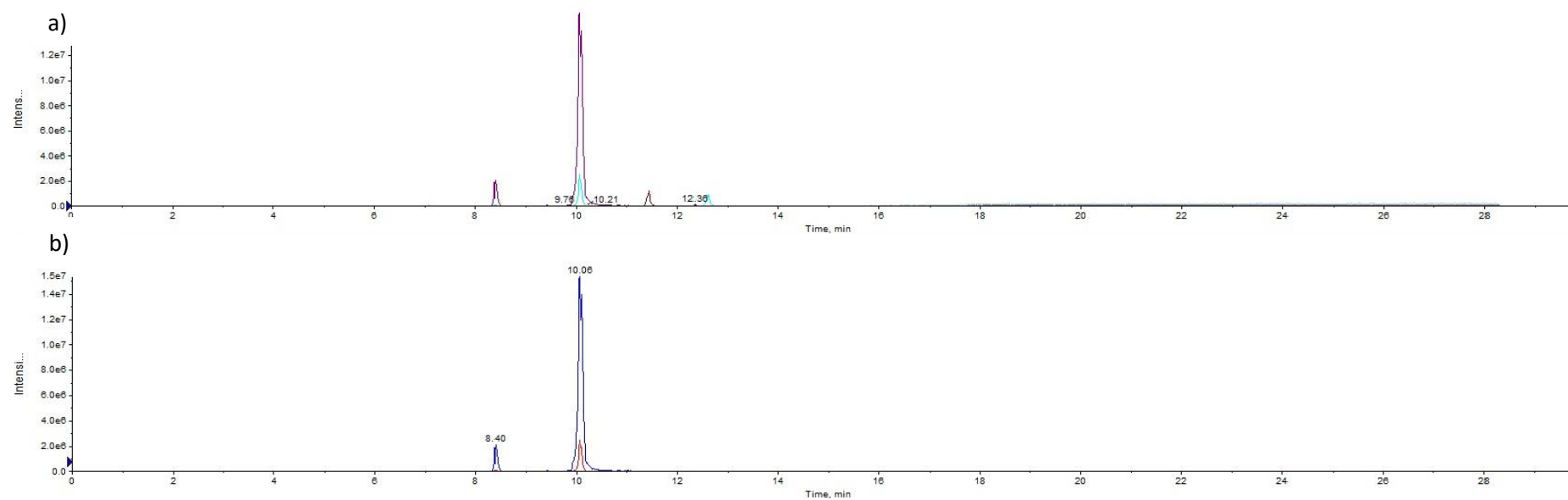


Figure S1. UPLC-MS/MS chromatograms of main compounds from extract 3 T0: a) apigenin) and b) rosmarinic acid

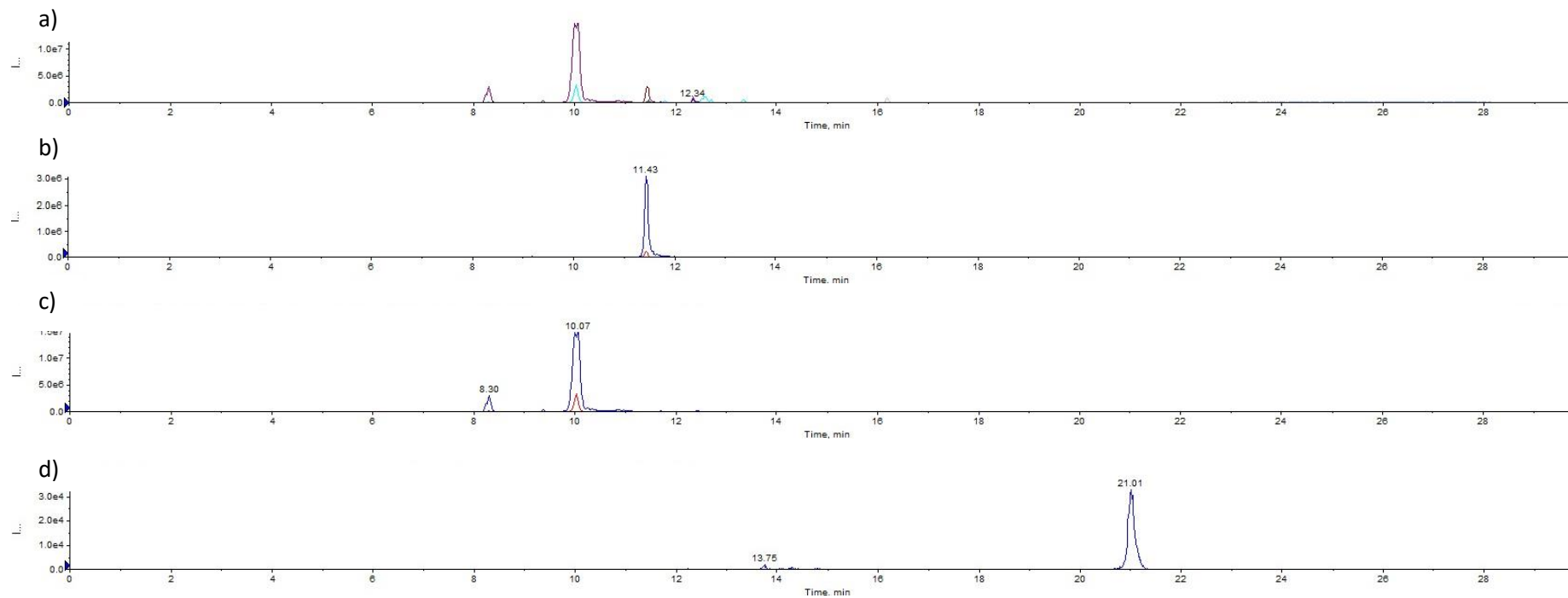
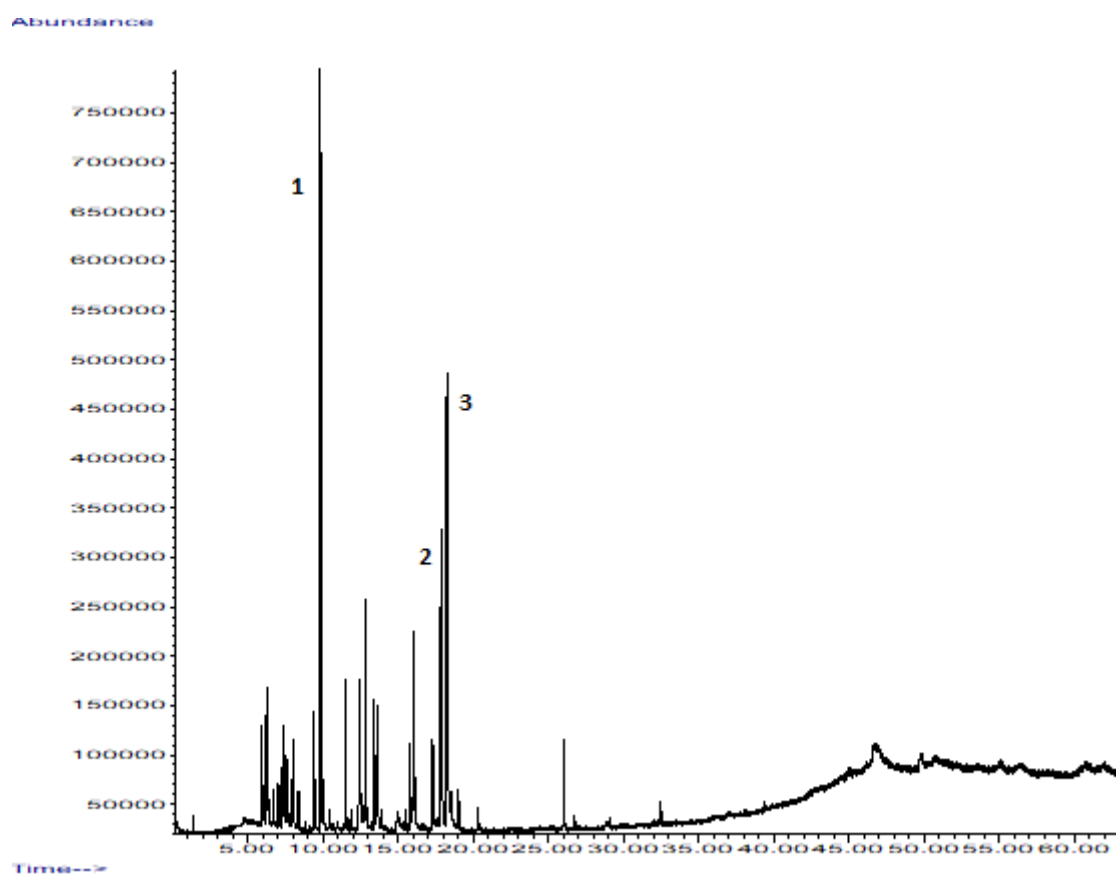
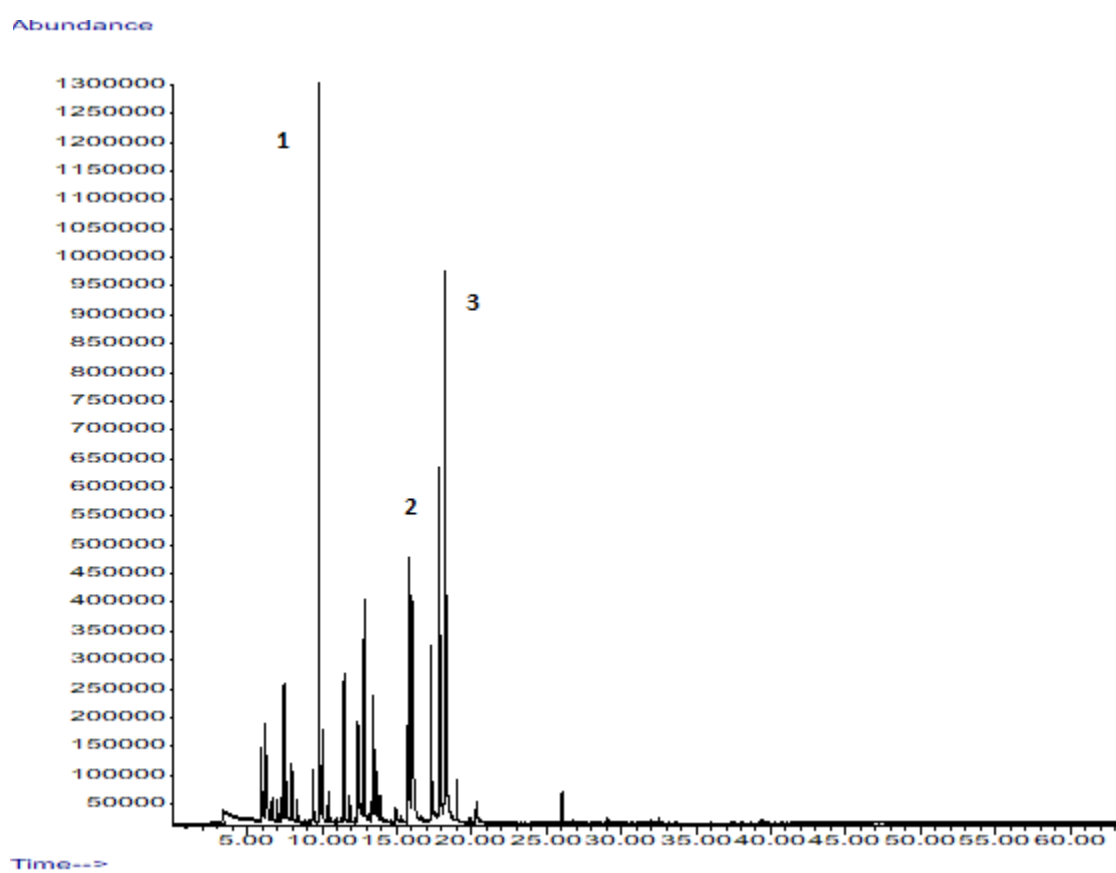


Figure S2. UPLC-MS/MS chromatograms of main compounds from extract TN8: a) apigenin), b) luteolin, c) rosmarinic acid, and d) oleanolic acid

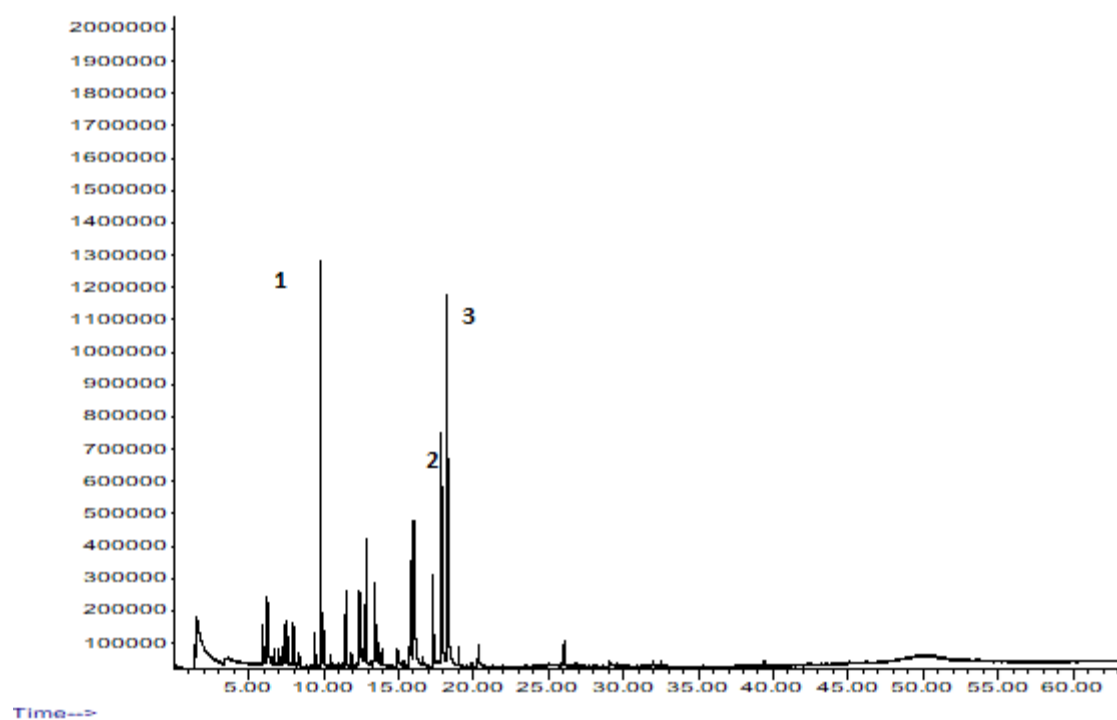
a)



b)



c) Abundance



d)

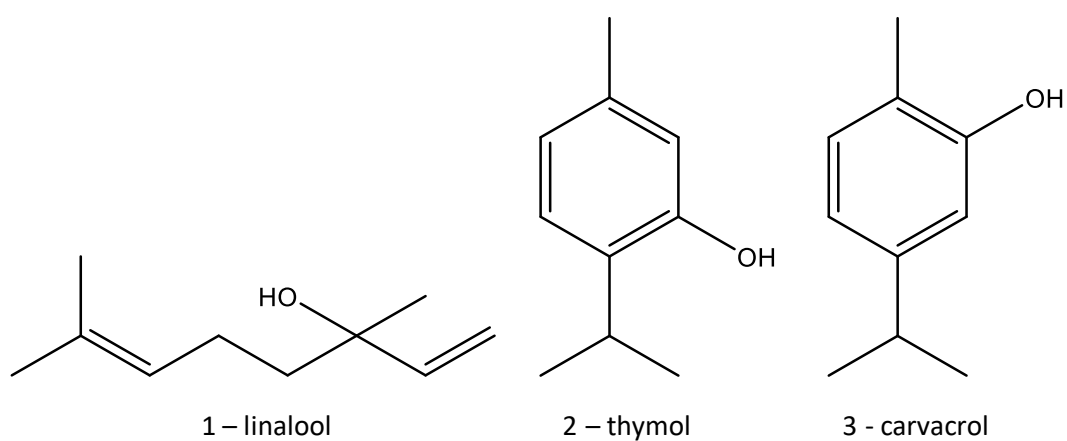


Figure S3. GC-MS chromatograms of extracts: a) 3 TO, b) TN4, c) TA4 and d) chemical formulas of main compounds found in wild thyme extracts