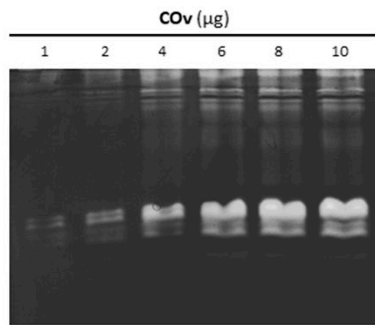


A)



B)

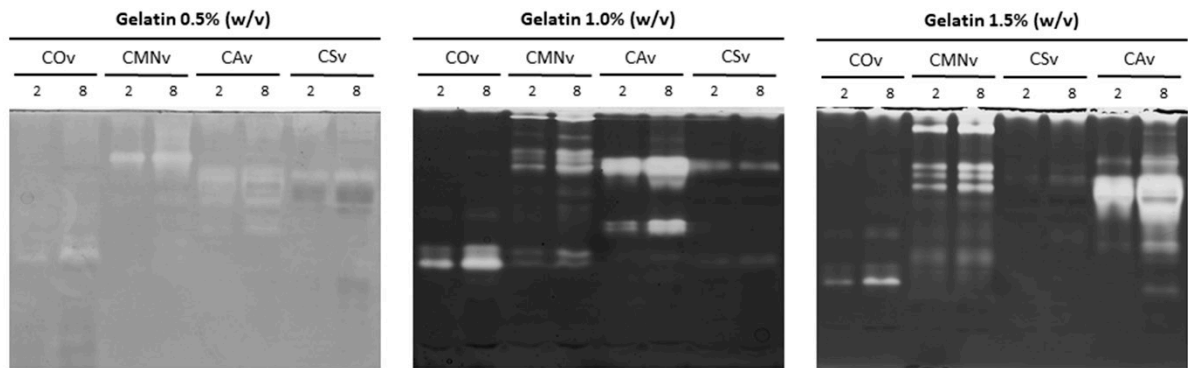


Figure S1. In-gel zymography optimization for snake venom protease screening. **(A)** Optimization of the venom sample concentration using *C. ornatus* venom (1, 2, 4, 6, 8 and 10 μg) on a 1.0% (w/v) gelatin zymography. **(B)** Optimization of the gelatin as substrate (0.5, 1.0 and 1.5% w/v) on the zymography using *C. ornatus* (COv), *C. m. nigrescens* (CMNv), *C. scutulatus* (CSv) and *C. atrox* (CAv) venoms.