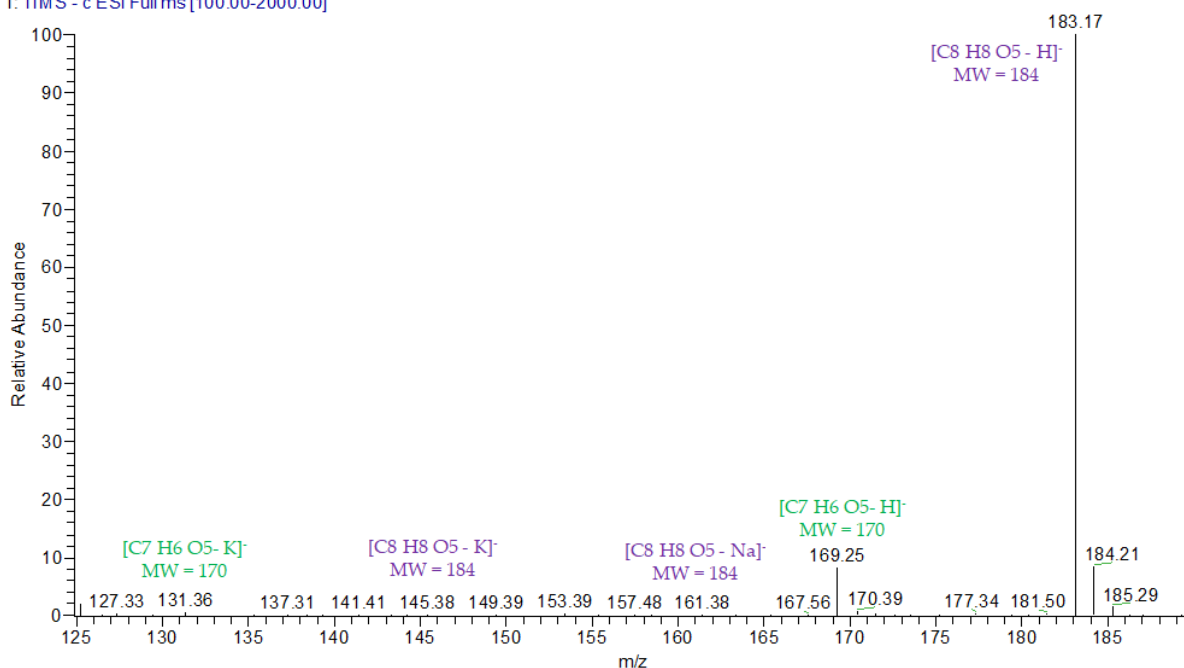


ESI-MS spectrum (Negative ion mode)

180822_04 #6 RT: 0.07 AV: 1 NL: 1.21E6
T: ITMS⁻ c ESI Full ms [100.00-2000.00]



ESI-MS spectrum (Positive ion mode)

180822_04 #7 RT: 0.07 AV: 1 NL: 3.85E5
T: FTMS⁺ p ESI Full ms [100.00-2000.00]

