

# Stainless Steel Wire Mesh Supported Molecularly Imprinted Composite Membranes for Selective Separation of Ebracteolata Compound B from *Euphorbia Fischeriana*

Yukun Ma <sup>1</sup>, Haijun Wang <sup>1,\*</sup> and Mengyan Guo <sup>2</sup>

<sup>1</sup> College of Pharmacy, Qiqihar Medical University, Qiqihar 161006, China; kuntengchongtian@163.com;

<sup>2</sup> Department of National Immunization Program, Qiqihar Center for Disease Control and Prevention, Qiqihar 161006, China; qscdcjm@163.com

\* Correspondence: qmuhjwang@163.com; Tel.: +86-0452-2663-881

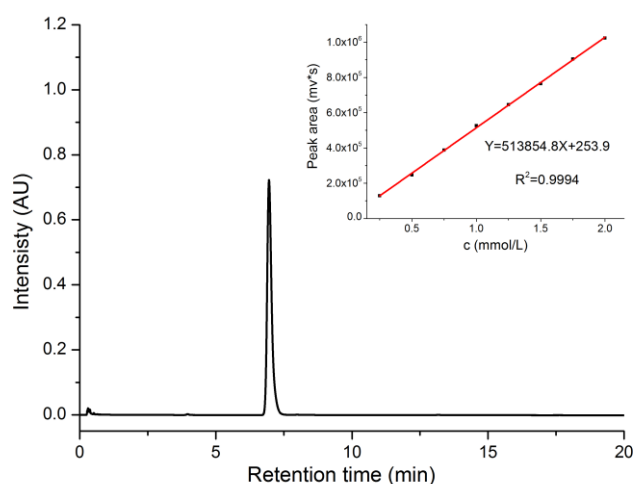


Figure S1. UHPLC chromatogram and calibration curve of ECB.

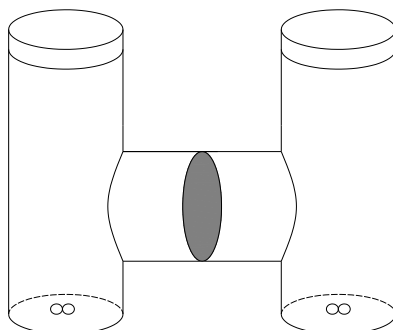


Figure S2. The permeability device.

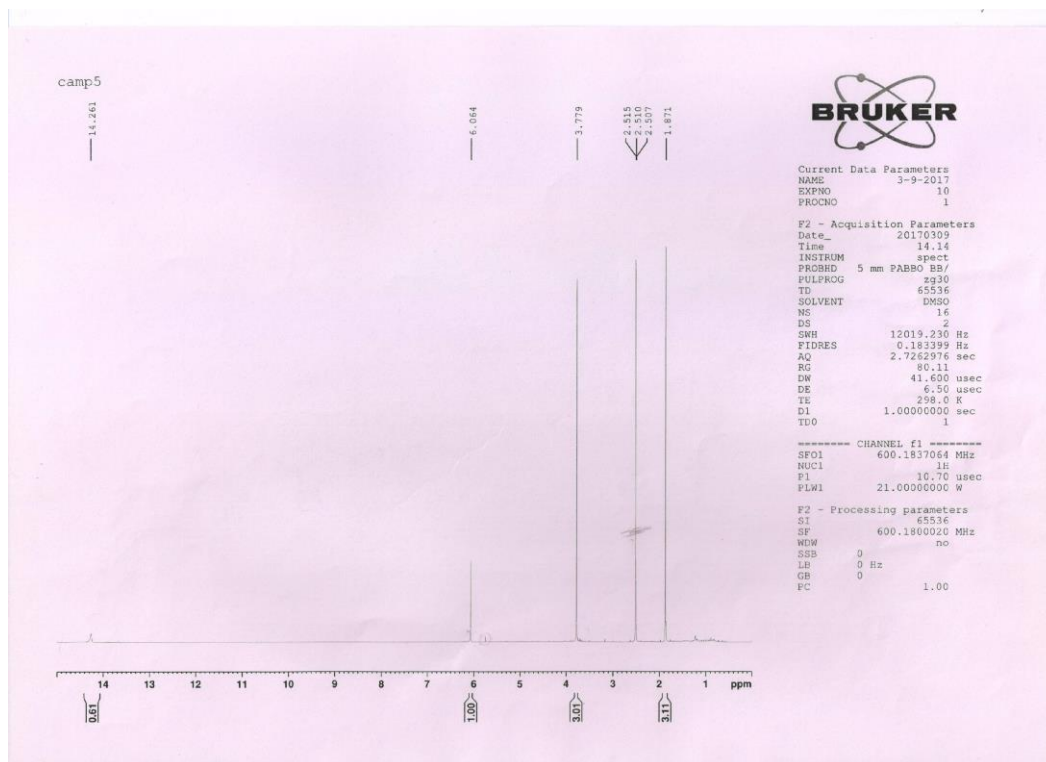


Figure S3. The  $^1\text{H}$ -NMR Spectrum of compound ECB.

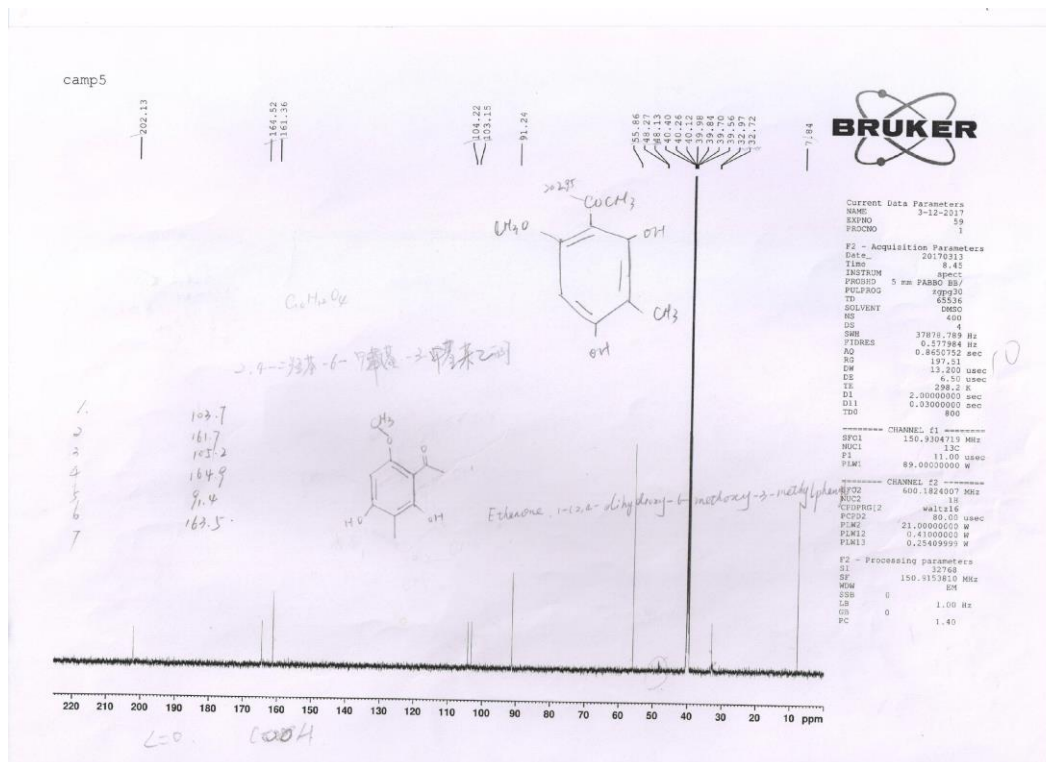


Figure S4. The  $^{13}\text{C}$ -NMR Spectrum of compound ECB.