

Figure 1. Western blot quantitative densitometry for SW13 and H295R cells treated for 24h and 72h respectively. A) SW13 cells; B) H295R cells. C: control. E: EF24 at 6.5 μ M for SW13 and 5 μ M for H295R cells. E+M: EF24+mitotane. M: mitotane 8 μ M for SW13 and 10 μ M for H295R cells. Comparison of phosphorylated proteins expression as a ratio normalized to untreated control levels. Treatment vs control: * $P < 0.05$.

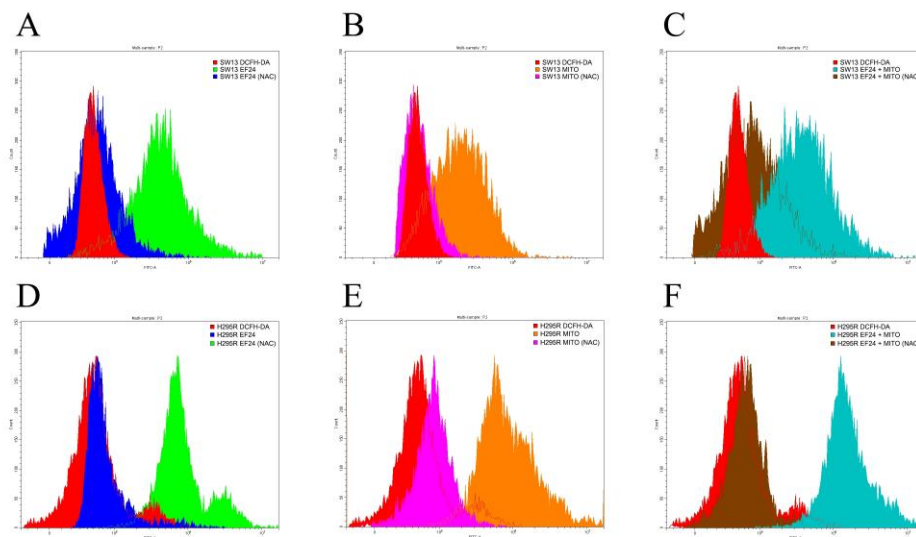


Figure 2. Representative flow cytometric analysis of intracellular ROS levels in SW13 and H295R cells treated for 24h and 72h respectively, with EF24, mitotane or their combination. DCFH-DA= 2',7'-dichlorofluorescein diacetate. NAC= N-acetyl-cysteine. E=EF24. M=mitotane. E+M=EF24+mitotane.