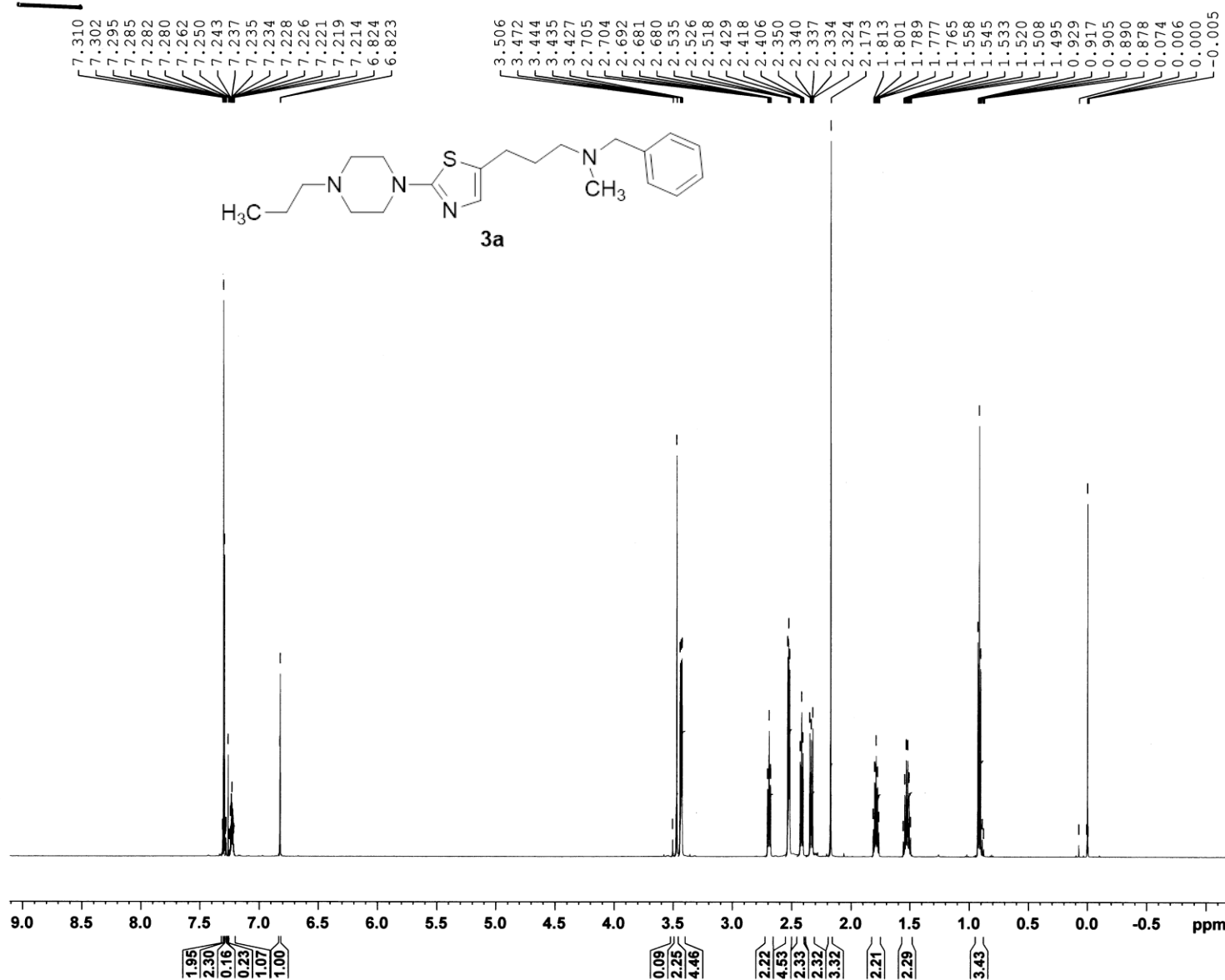


“Non-imidazole histamine H₃ ligands. Part VII. Synthesis, in vitro and in vivo characterization of 5-substituted-2-thiazol-4-n-propylpiperazines”

Appendix A

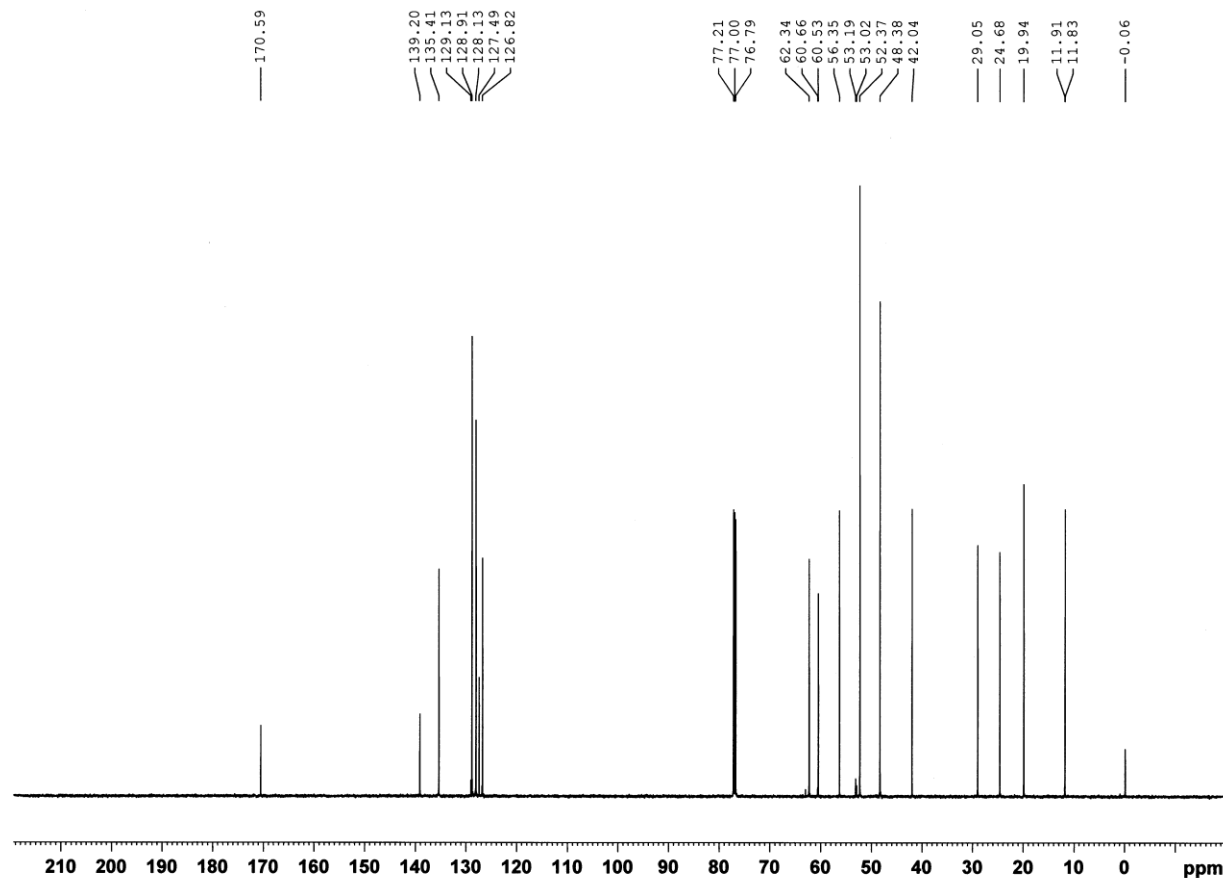
Supplementary data

¹H and ¹³C spectra for final compounds 3a-f



NAME rga 1011
 EXPNO 11
 PROCNO 1
 Date 20110410
 Time 0.05
 INSTRUM spect
 PROBHD 5 mm PABBO BB-
 PULPROG zg30
 TD 65536
 SOLVENT CDCl3
 NS 16
 DS 2
 SWH 12335.526 Hz
 FIDRES 0.188225 Hz
 AQ 2.6564426 sec
 RG 50.8
 DW 40.533 usec
 DE 8.50 usec
 TE 303.1 K
 D1 1.00000000 sec
 TD0 1

===== CHANNEL f1 =====
 NUC1 1H
 P1 9.40 usec
 PL1 -3.00 dB
 PL1W 30.57242203 W
 SFO1 600.2637069 MHz
 SI 32768
 SF 600.2600167 MHz
 WDW no
 SSB 0
 LB 0.00 Hz
 GB 0
 PC 1.00



```

NAME      rga 1011
EXPNO     10
PROCNO     1
Date_      20110410
Time       0.04
INSTRUM    spect
PROBHD     5 mm FAPBO BB-
PULPROG    zgpg30
TD         65536
SOLVENT    CDCl3
NS         512
DS         4
SWH         36057.691 Hz
FIDRES     0.550197 Hz
AQ         0.9088159 sec
RG         2050
DW         13.867 usec
DE         8.50 usec
TE         303.7 K
D1         2.00000000 sec
D11        0.03000000 sec
TD0        1

```

```

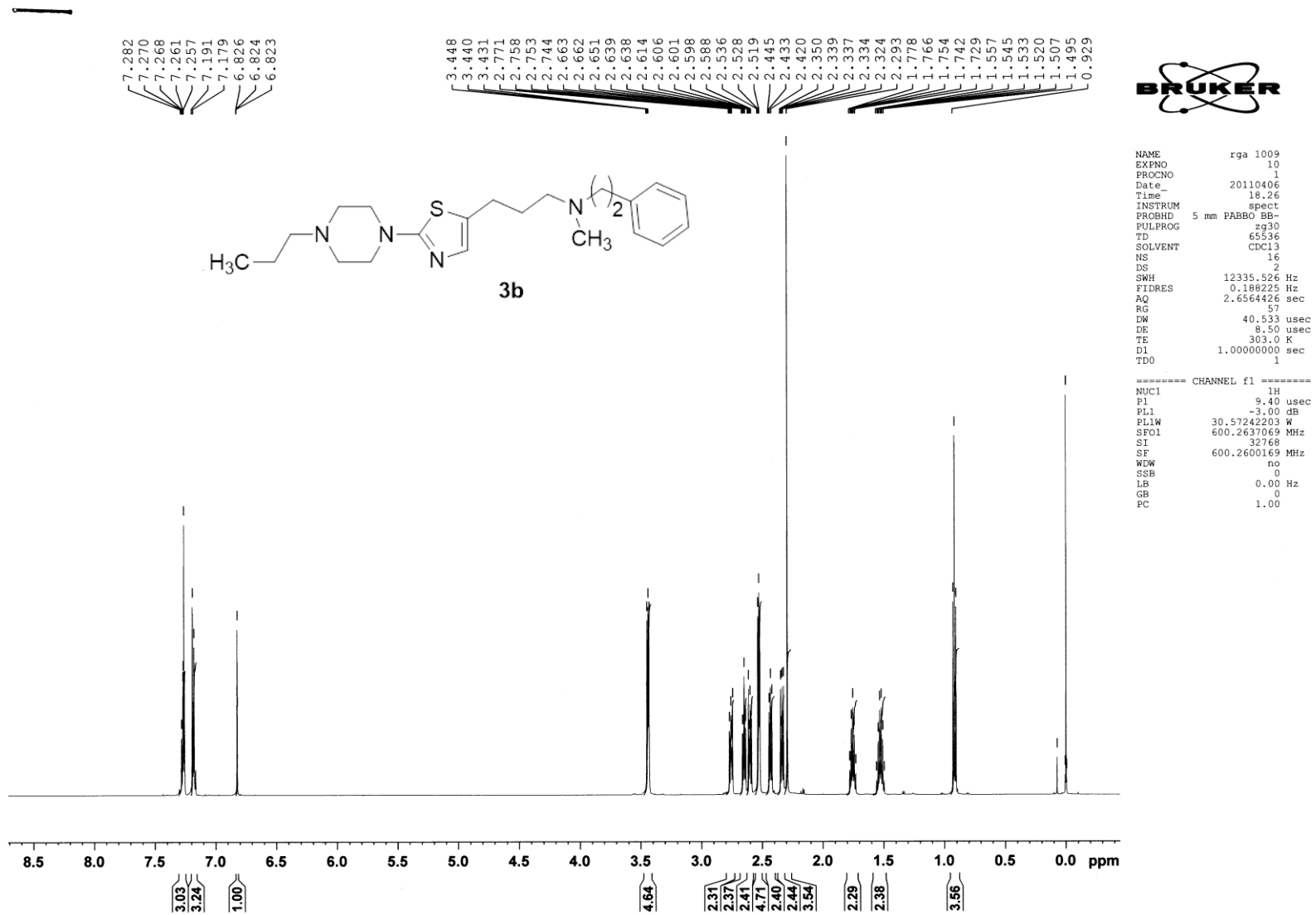
===== CHANNEL f1 =====
NUC1       13C
P1         10.50 usec
PL1        0.00 dB
PL1W       91.93504333 W
SFO1       150.9505906 MHz

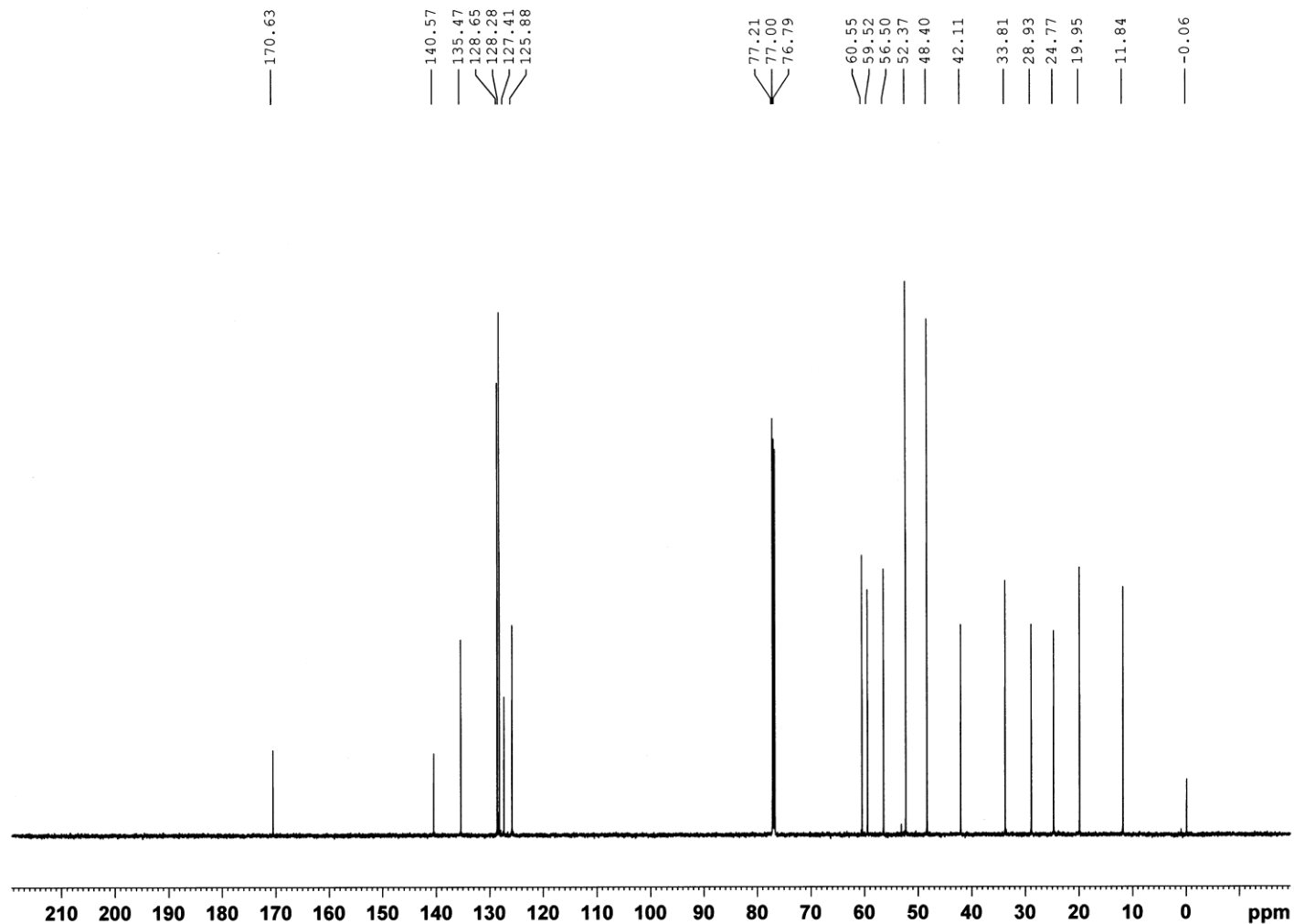
```

```

===== CHANNEL f2 =====
CPDPRG2    waltz16
NUC2       1H
PCPD2      90.00 usec
PL2        -3.00 dB
PL12       16.26 dB
PL13       18.00 dB
PL2W       30.57242203 W
PL12W      0.36251819 W
PL13W      0.24284537 W
SFO2       600.2624010 MHz
SI         32768
SF         150.9355061 MHz
WDW        EM
SSB        0
LB         1.00 Hz
GB         0
PC         1.40

```





```

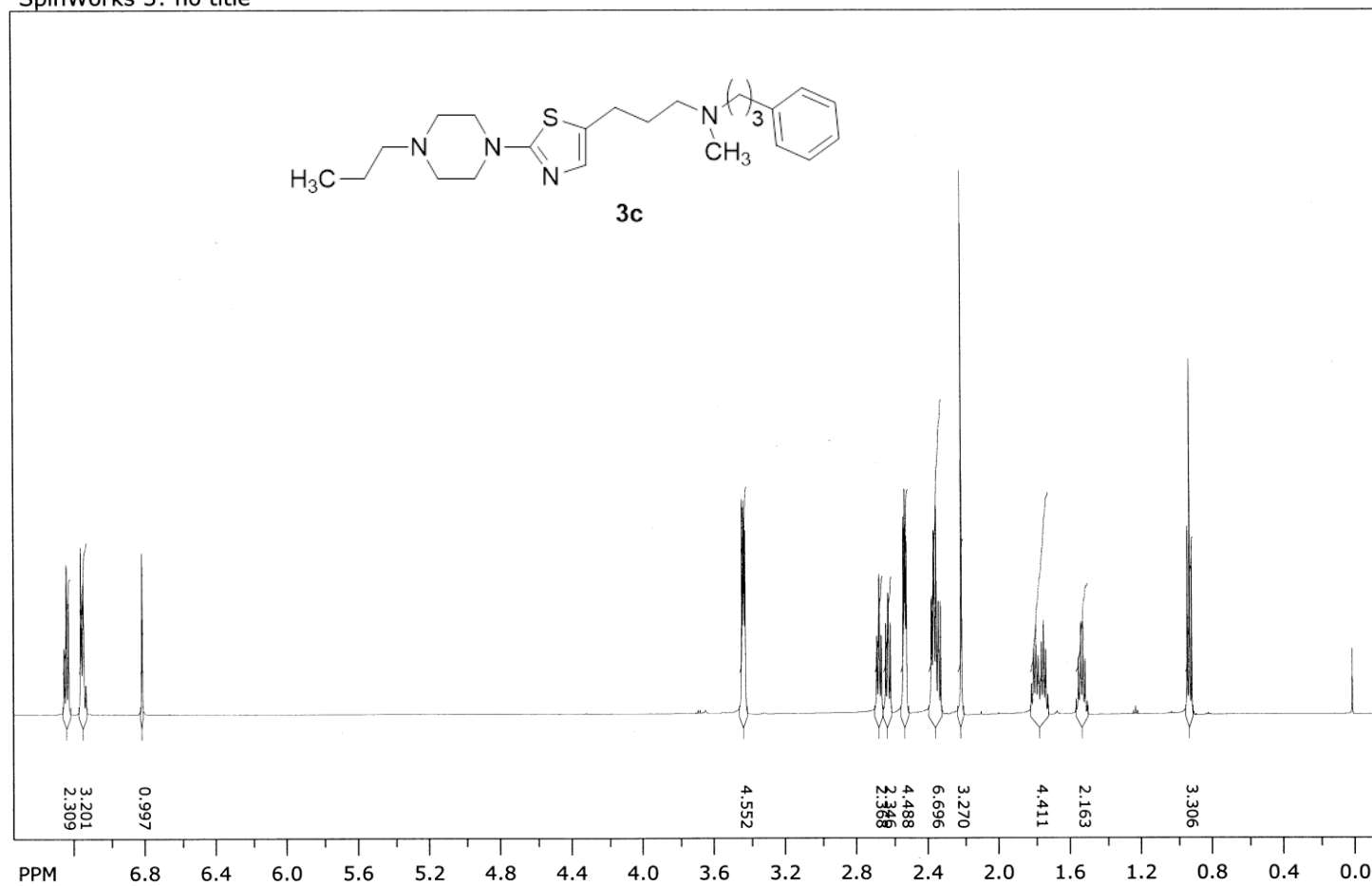
NAME      rga 1009
EXPNO     11
PROCNO    1
Date_     20110406
Time      18.52
INSTRUM   spect
PROBHD    5 mm PABBO BB-
PULPROG   zgpg30
TD        65536
SOLVENT   CDCl3
NS         526
DS         4
SWH        36057.691 Hz
FIDRES     0.550197 Hz
AQ         0.9088159 sec
RG         2050
DW         13.867 usec
DE         8.50 usec
TE         304.2 K
D1         2.00000000 sec
D11        0.03000000 sec
TD0        1

===== CHANNEL f1 =====
NUC1       13C
P1         10.50 usec
PL1        0.00 dB
PL1W       91.93504333 W
SFO1       150.9505906 MHz

===== CHANNEL f2 =====
CPDPRG2    waltz16
NUC2       1H
PCPD2      90.00 usec
PL2        -3.00 dB
PL12       16.26 dB
PL13       18.00 dB
PL2W       30.57242203 W
PL12W      0.36251819 W
PL13W      0.24284537 W
SFO2       600.2624010 MHz
SI         32768
SF         150.9355038 MHz
WDW        EM
SSB        0
LB         1.00 Hz
GB         0
PC         1.40

```

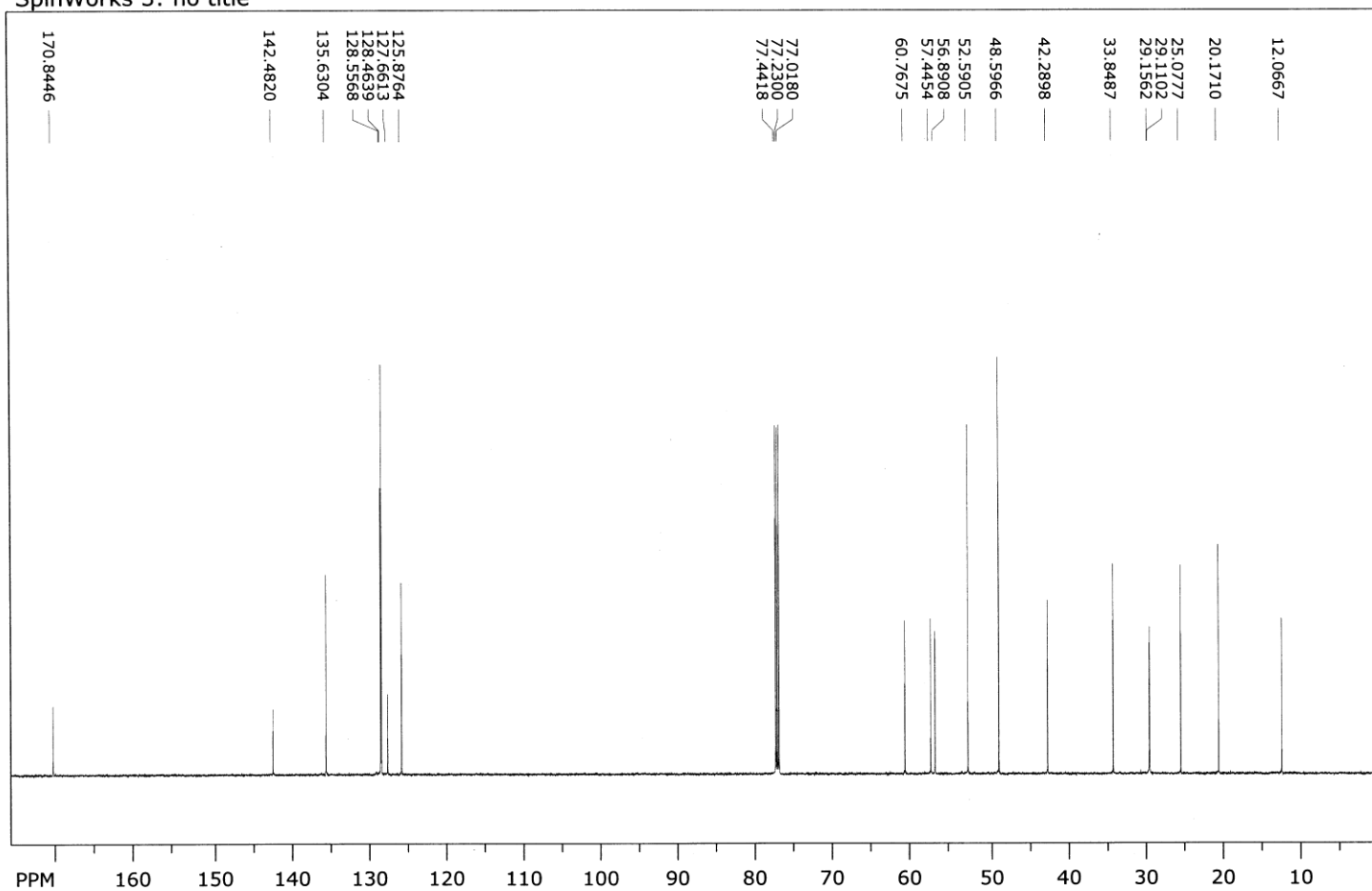
SpinWorks 3: no title



file: ...mr\Analizy bieżące\rga-1276\10\fid expt: <zg30>
 transmitter freq.: 600.263707 MHz
 time domain size: 65536 points
 width: 12335.53 Hz = 20.5502 ppm = 0.188225 Hz/pt
 number of scans: 16

freq. of 0 ppm: 600.260018 MHz
 processed size: 32768 complex points
 LB: 0.000 GF: 0.0000
 Hz/cm: 184.934 ppm/cm: 0.30809

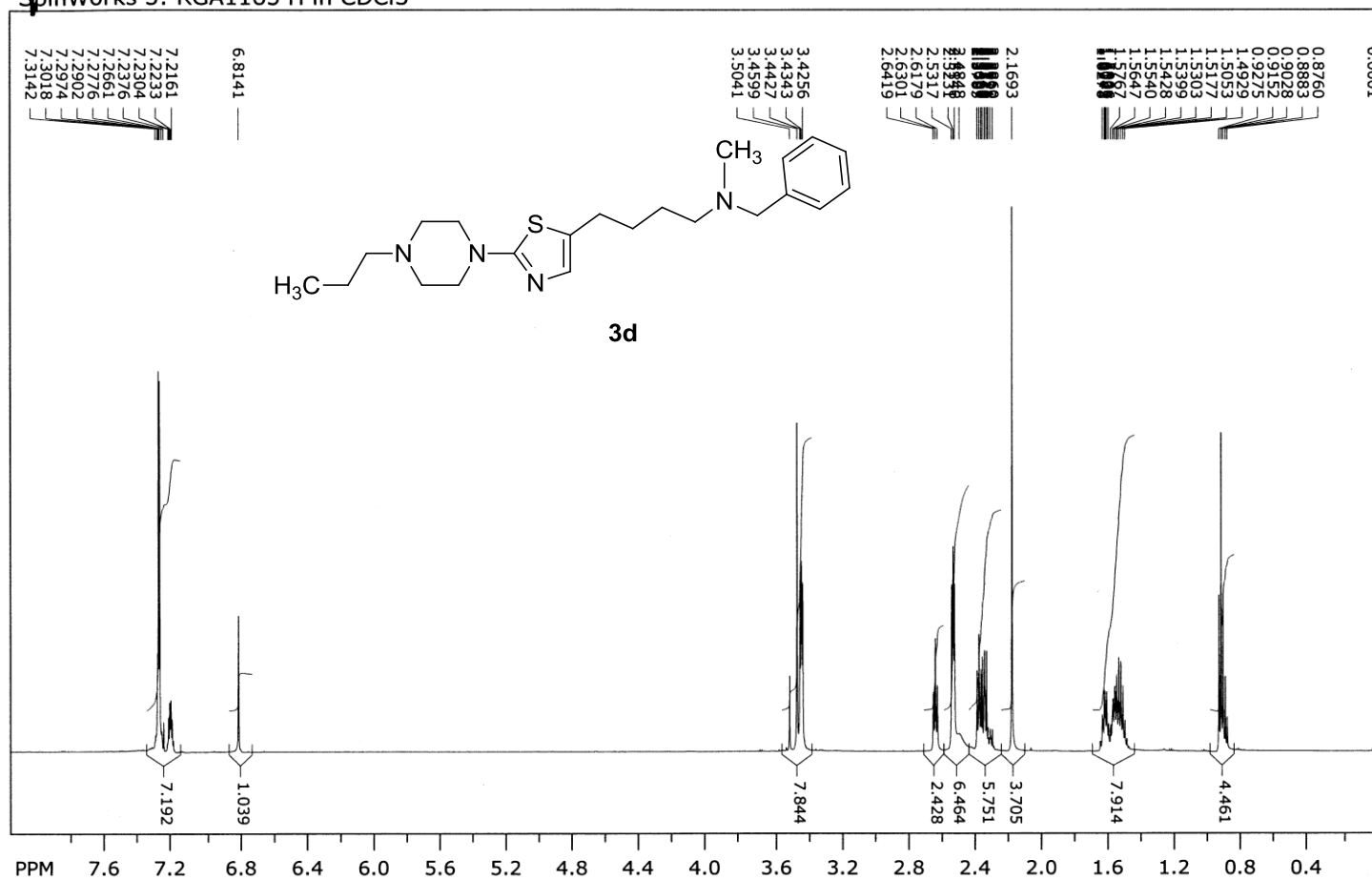
SpinWorks 3: no title



file: ...mr\Analiza bieżąca\rga-1276\11\fid exp: <zpgg30>
 transmitter freq.: 150.950591 MHz
 time domain size: 65536 points
 width: 36057.69 Hz = 238.8708 ppm = 0.550197 Hz/pt
 number of scans: 1024

freq. of 0 ppm: 150.935471 MHz
 processed size: 32768 complex points
 LB: 0.000 GF: 0.0000
 Hz/cm: 1070.734 ppm/cm: 7.09327

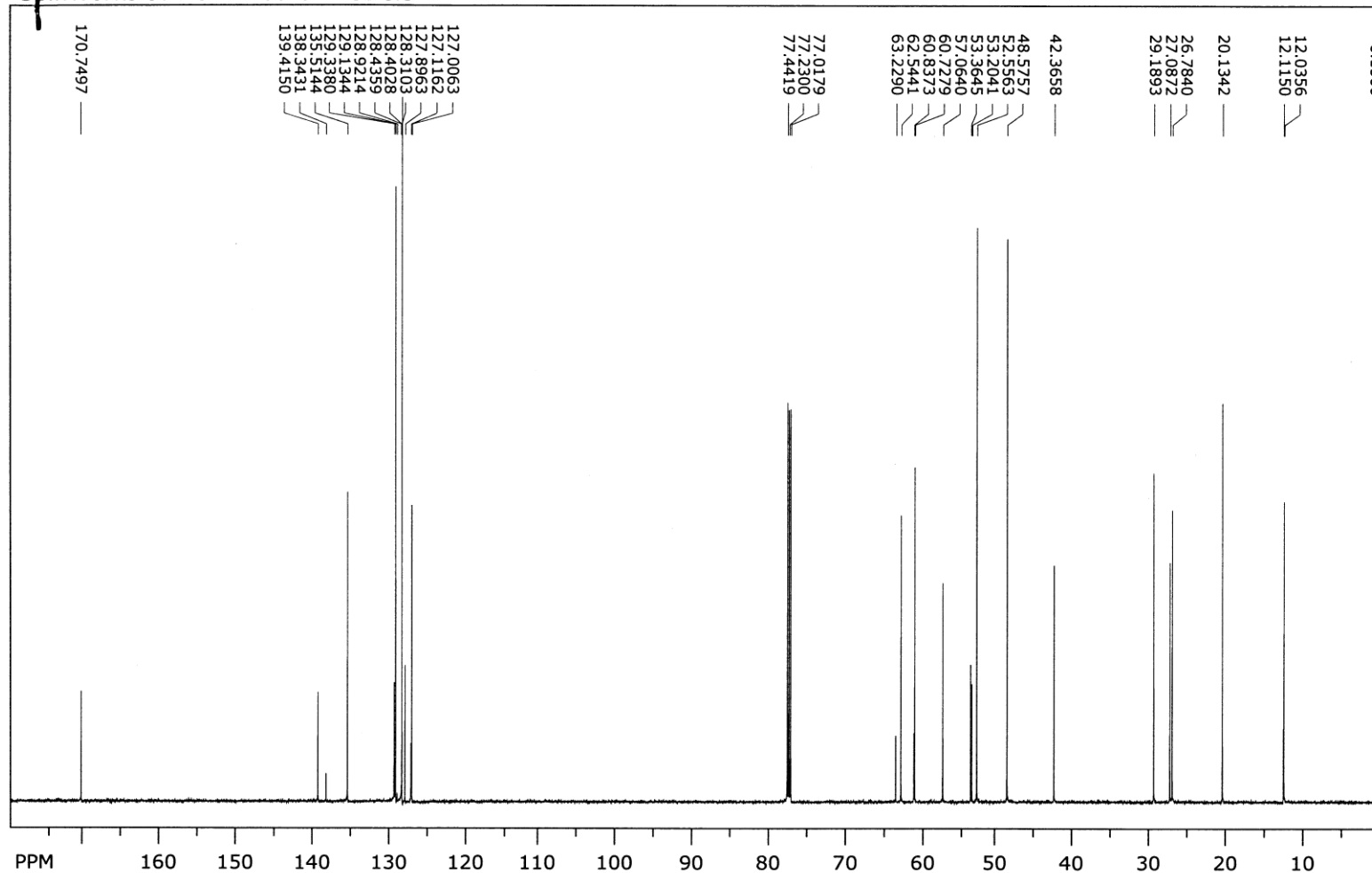
SpinWorks 3: RGA1165 H in CDCl₃



file: K:\rga-1165\11\fid expt: <zg30>
 transmitter freq.: 600.263707 MHz
 time domain size: 65536 points
 width: 12335.53 Hz = 20.5502 ppm = 0.188225 Hz/pt
 number of scans: 16

freq. of 0 ppm: 600.260014 MHz
 processed size: 32768 complex points
 LB: 0.300 GF: 0.0000
 Hz/cm: 198.164 ppm/cm: 0.33013

SpinWorks 3: RGA 1165 C in CDCl₃



file: K:\rga-1165\10\fid expt: <zpgg30>

transmitter freq.: 150.950591 MHz

time domain size: 65536 points

width: 36057.69 Hz = 238.8708 ppm = 0.550197 Hz/pt

number of scans: 1024

freq. of 0 ppm: 150.935474 MHz

processed size: 32768 complex points

LB: 1.000 GF: 0.0000

Hz/cm: 1091.036 ppm/cm: 7.22777

```

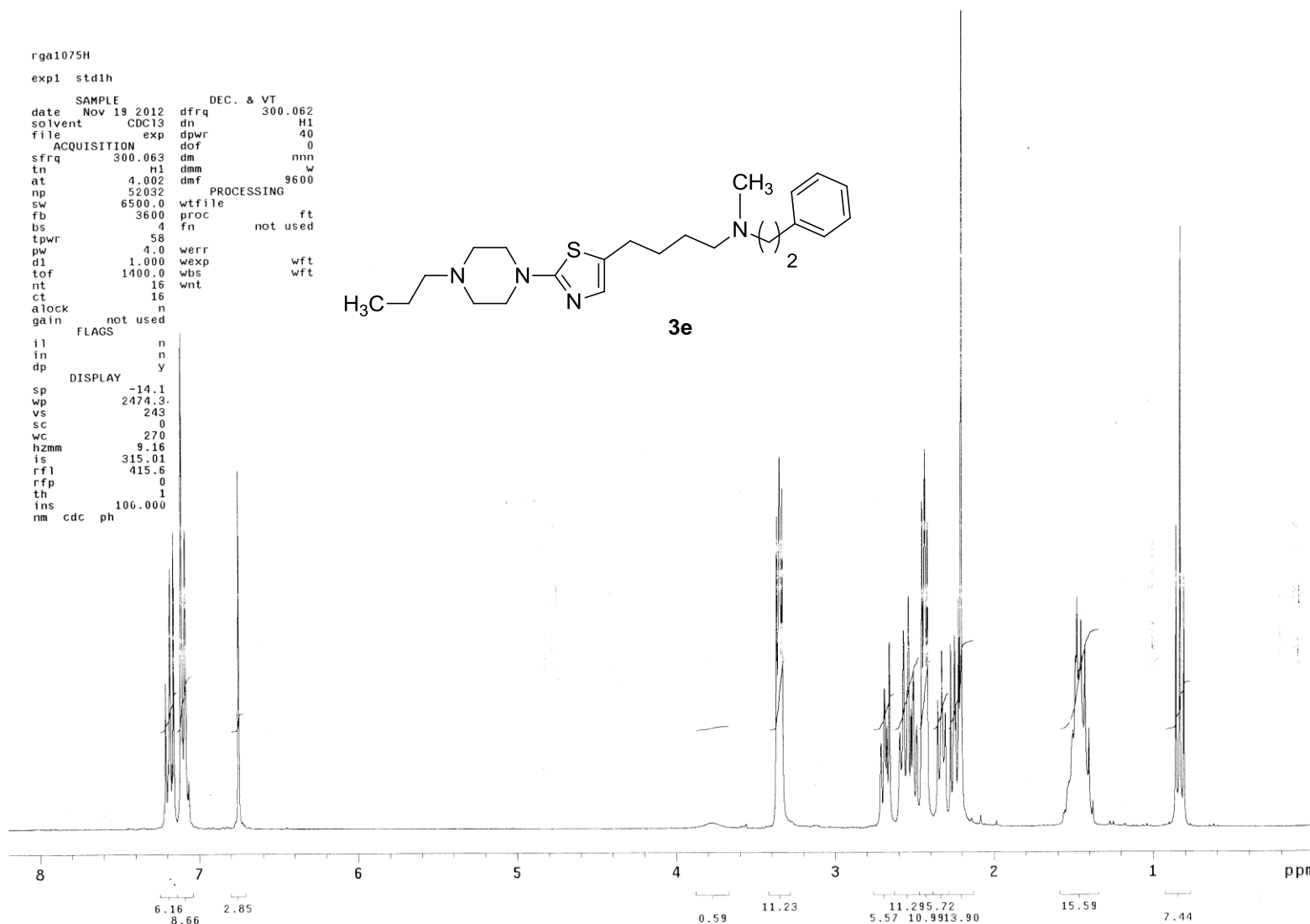
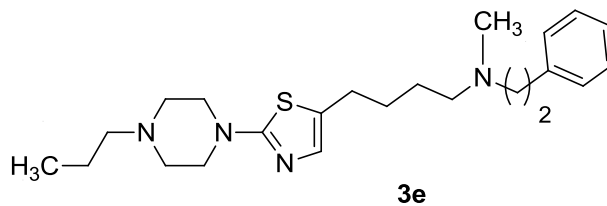
rga1075H
expl std1h

SAMPLE
date Nov 19 2012 dfrq 300.062
solvent CDC13 dn H1
file exp dpwr 40
ACQUISITION dof 0
sfrq 300.063 dm nnn
tn H1 dmm w
at 4.002 dmF 9600
np 52032
sw 6500.0 wtfile
fb 3600 proc ft
bs 4 fn not used
tpwr 58
pw 4.0 werr
d1 1.000 wexp wft
tof 1400.0 wbs wft
nt 16 wnt
ct 16
alock n
gain not used

FLAGS
il n
in n
dp y

DISPLAY
sp -14.1
wp 2474.3
vs 243
sc 0
wc 270
hzmm 9.16
is 315.01
rfl 415.6
rfp 0
th 1
ins 100.000
nm cdc ph

```

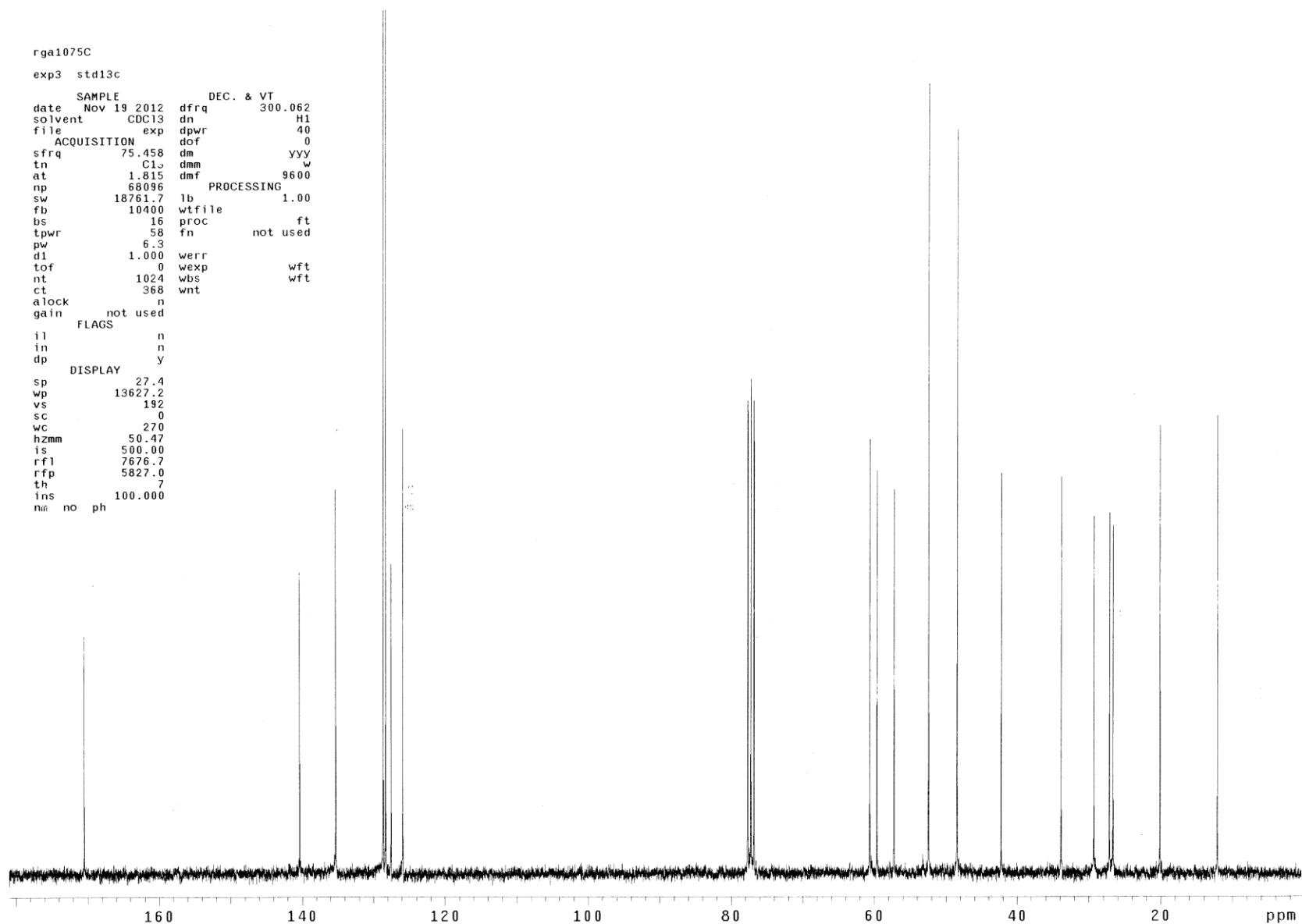


rga1075C

exp3 std13c

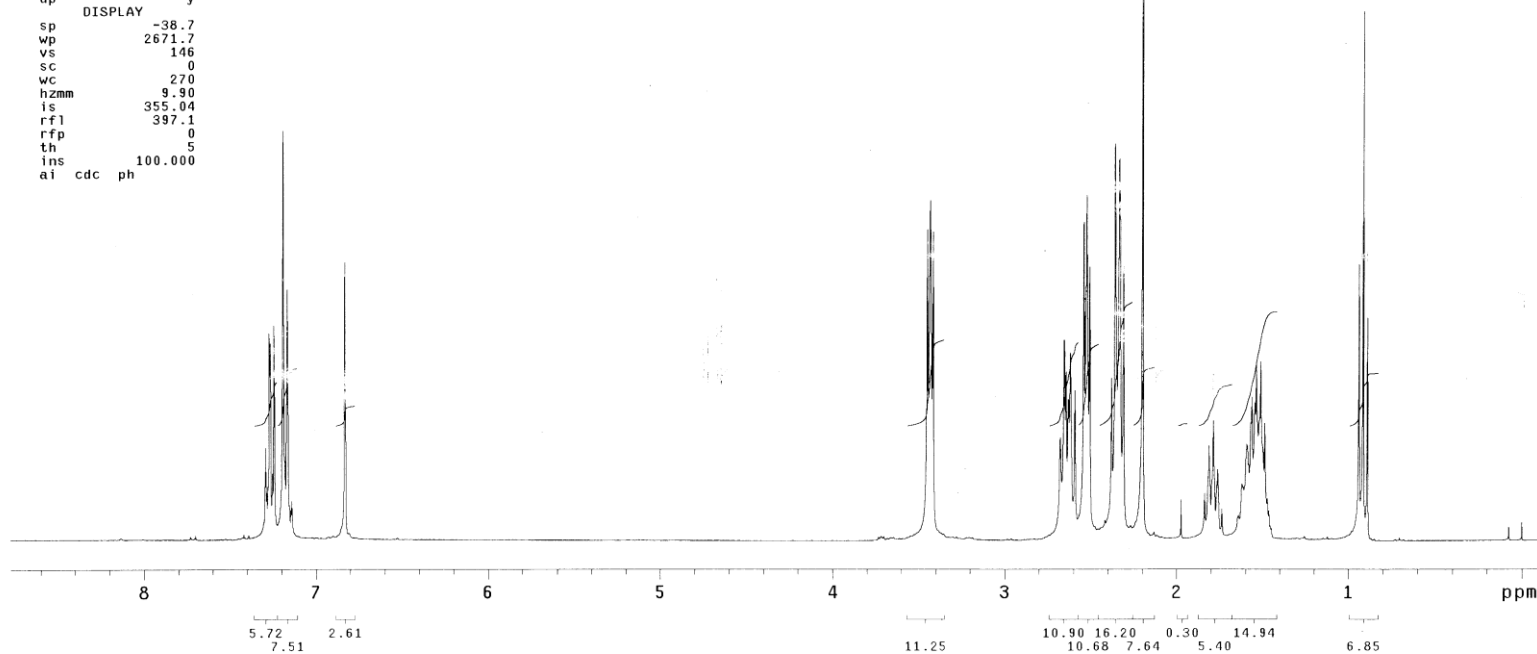
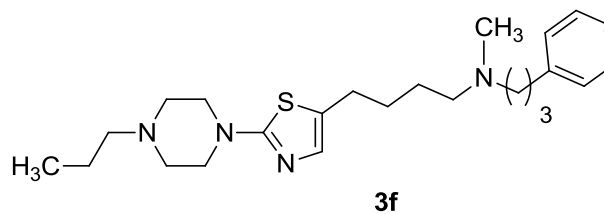
```

SAMPLE          DEC. & VT
date    Nov 19 2012    dfrq    300.062
solvent  CDC13        dn      H1
file     exp          dpwr    40
ACQUISITION      dof      0
sfrq      75.458      dm      YYY
tn         C13        dmm      w
at         1.815      dmf     9600
np        68096      PROCESSING
sw        18761.7      lb      1.00
fb        10400      wtfile
bs         16        proc      ft
tpwr       58        fn      not used
pw         6.3
d1         1.000      werr
tof         0        wexp      wft
nt        1024      wbs      wft
ct         368      wnt
alock      n
gain      not used
          FLAGS
il         n
in         n
dp         y
          DISPLAY
sp         27.4
wp        13627.2
vs         192
sc         0
wc         270
hzmm       50.47
is         500.00
rfl        7676.7
rfp        5827.0
th         7
ins        100.000
nmr no ph
```



rga1077H
expl std1h

SAMPLE		DEC. & VT	
date	Dec 10 2012	dfrq	300.062
solvent	CDC13	dn	H1
file	exp	dpwr	40
ACQUISITION		dof	0
sfrq	300.063	dm	nnn
tn	H1	dmm	w
at	4.002	dmf	9600
np	52032	PROCESSING	
sw	6500.0	wtfile	
fb	3600	proc	ft
bs	4	fn	not used
tpwr	58		
pw	8.0	werr	
d1	1.000	wexp	wft
tof	1400.0	wbs	wft
nt	16	wnt	
ct	16		
alock	n		
gain	not used		
FLAGS			
il	n		
in	n		
dp	y		
DISPLAY			
sp	-38.7		
wp	2671.7		
vs	146		
sc	0		
wc	270		
hzm	9.90		
is	355.04		
rfl	397.1		
rfp	0		
th	5		
ins	100.000		
ai	cdc ph		



1790 1077C

13C OBSERVE

exp3 std13c

SAMPLE		DEC. & VT	
date	Dec 10 2012	dfrq	300.062
solvent	CDC13	dn	H1
file	exp	dpwr	40
ACQUISITION		dof	0
sfrq	75.458	dm	yyy
tn	C13	dmm	w
at	1.815	dmf	9600
np	68096	PROCESSING	
sw	18761.7	lb	1.00
fb	10400	wtfile	
bs	16	proc	ft
tpwr	58	fn	not used
pw	6.3		
d1	1.000	werr	
tof	0	wexp	wft
nt	1024	wbs	wft
ct	320	wnt	
alock	n		
gain	not used		
FLAGS			
il	n		
in	n		
dp	y		
DISPLAY			
sp	-137.7		
wp	14692.7		
vs	162		
sc	0		
wc	270		
hzmm	54.42		
is	500.00		
rfl	7669.3		
rfp	5827.0		
th	7		
ins	100.000		
nm	no	p:	

