

Supplementary Material

New strigolactone mimics as exogenous signals for rhizosphere organisms

Supporting Information

The ^1H NMR and ^{13}C NMR spectra of compounds 3, 5 and 7.

Florin Oancea¹, Emilian Georgescu², Radoslava Matusova³, Florentina Georgescu⁴, Alina Nicolescu^{5,6}, Iuliana Raut¹, Maria-Luiza Jecu¹, Marius-Constantin Vladulescu⁴, Lucian Vladulescu⁴ and Calin Deleanu^{5,6,*}

¹ National Research & Development Institute for Chemistry & Petrochemistry – ICECHIM, Spl. Independentei 202, RO-060021 Bucharest, Romania; Florin.Oancea@icechim.ro; iulia_rt@yahoo.com; Jecu.Luiza@icechim.ro

² Research Center Oltschim, St. Uzinei 1, RO-240050 Ramnicu Valcea, Romania; g_emilian@yahoo.com

³ Plant Science and Biodiversity Center SAS, Institute of Plant Genetics and Biotechnology, PO Box 39A, 95007 Nitra, Slovakia; Radka.Matusova@savba.sk

⁴ Research Dept., Teso Spec S. R. L., Str. Muncii 53, RO-915200 Fundulea, Calarasi, Romania; florentina_fg@yahoo.com; marius.vladulescu@tesospec.com; lucian.vladulescu@tesospec.com

⁵ “C. D. Nenitescu” Centre of Organic Chemistry, Romanian Academy, Spl. Independentei 202B, Bucharest RO-060023, Romania; alina220382@yahoo.com; calin.deleanu@yahoo.com

⁶ “Petru Poni” Institute of Macromolecular Chemistry, Romanian Academy, Aleea Grigore Ghica Voda 41-A, 700487 Iasi, Romania; alina220382@yahoo.com; calin.deleanu@yahoo.com

* Correspondence: calin.deleanu@yahoo.com; Tel.: +40-744-340-456

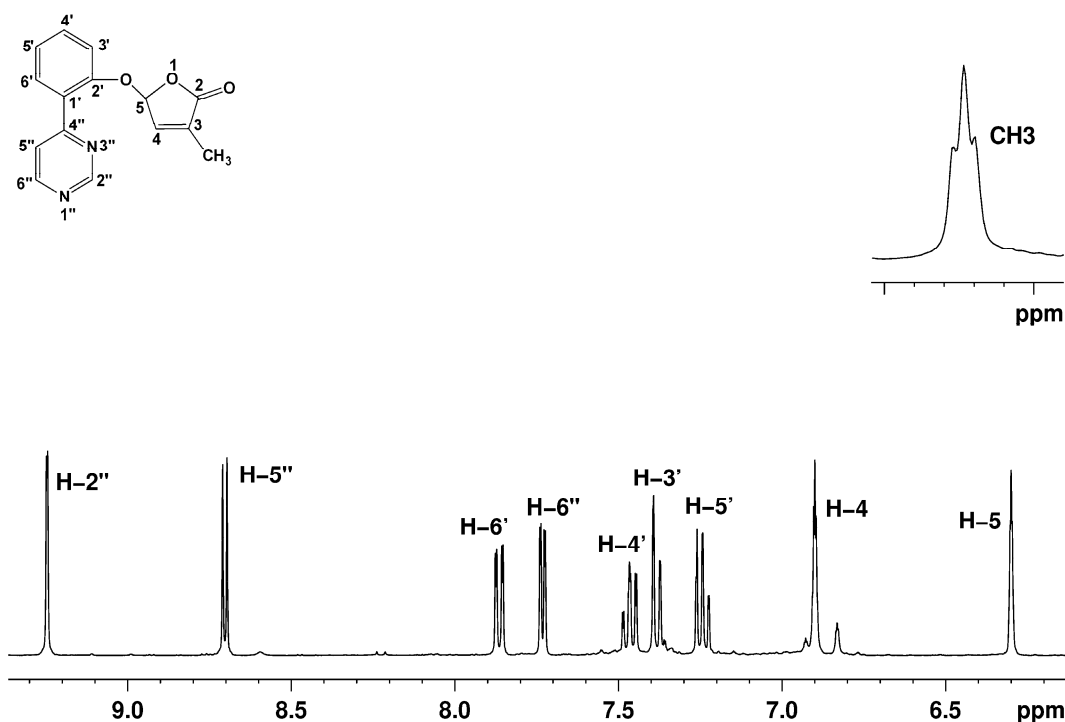


Figure S1. The ¹H NMR spectrum for compound **3**, recorded in CDCl₃, showing the assignments of the protons. The signal corresponding to the methyl group is displayed in the insert.

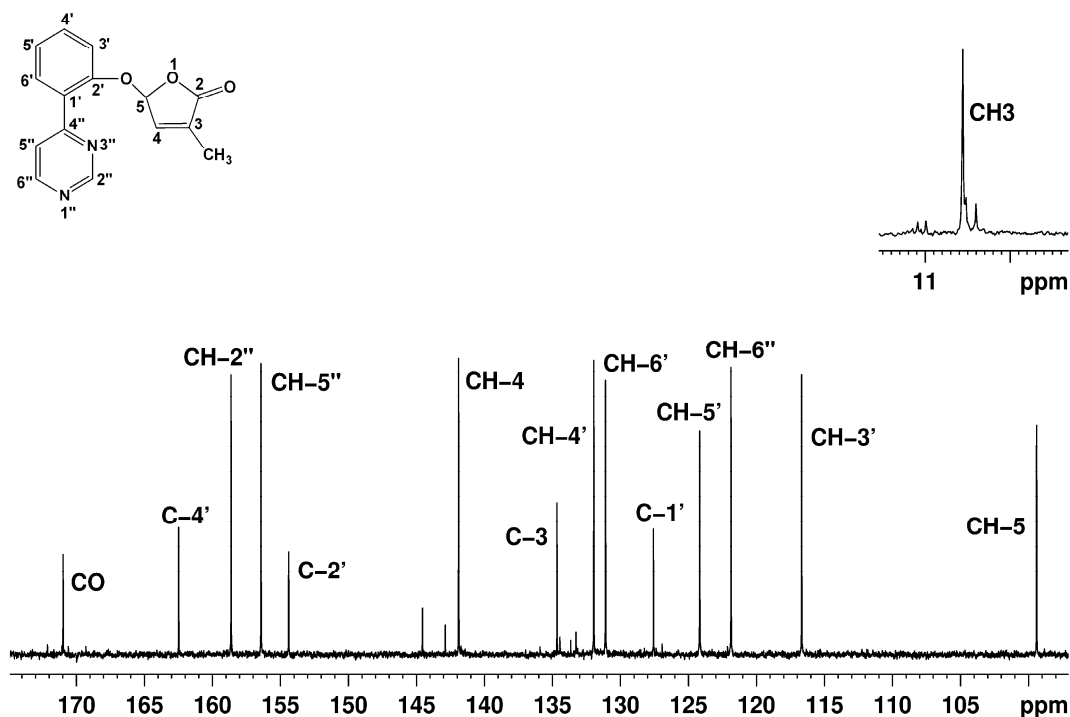


Figure S2. The ¹³C NMR spectrum for compound **3**, recorded in CDCl₃, showing the assignments of the carbons. The signal corresponding to the methyl group is displayed in the insert.

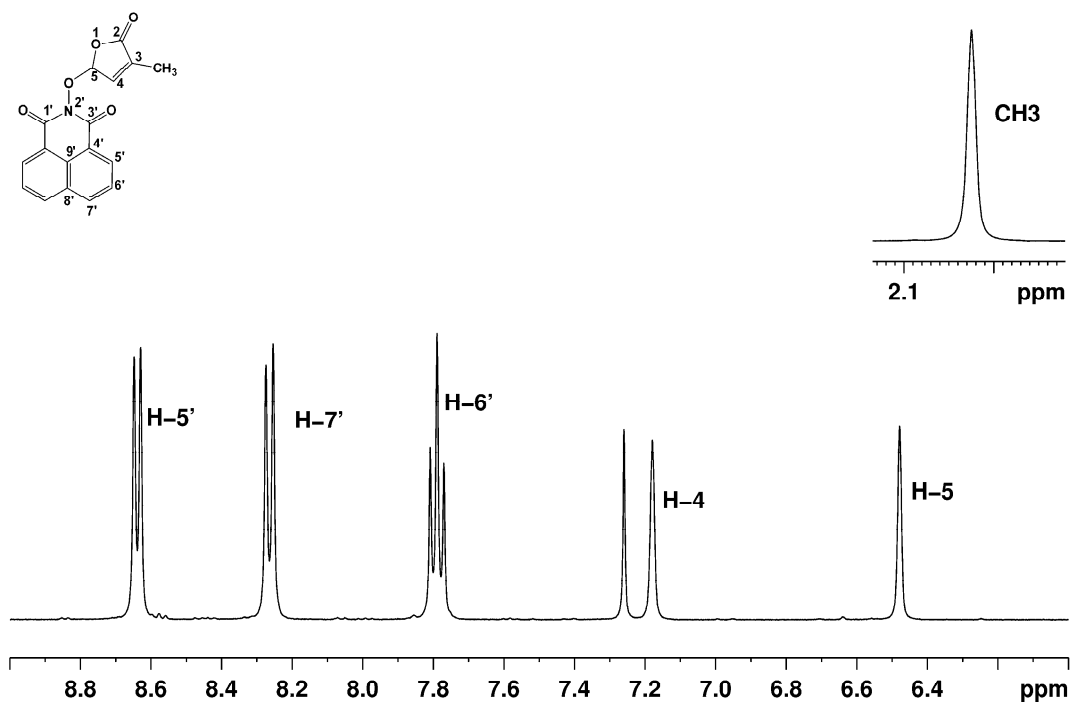


Figure S3. The ^1H NMR spectrum for compound **5**, recorded in CDCl₃, showing the assignments of the protons. The signal corresponding to the methyl group is displayed in the insert.

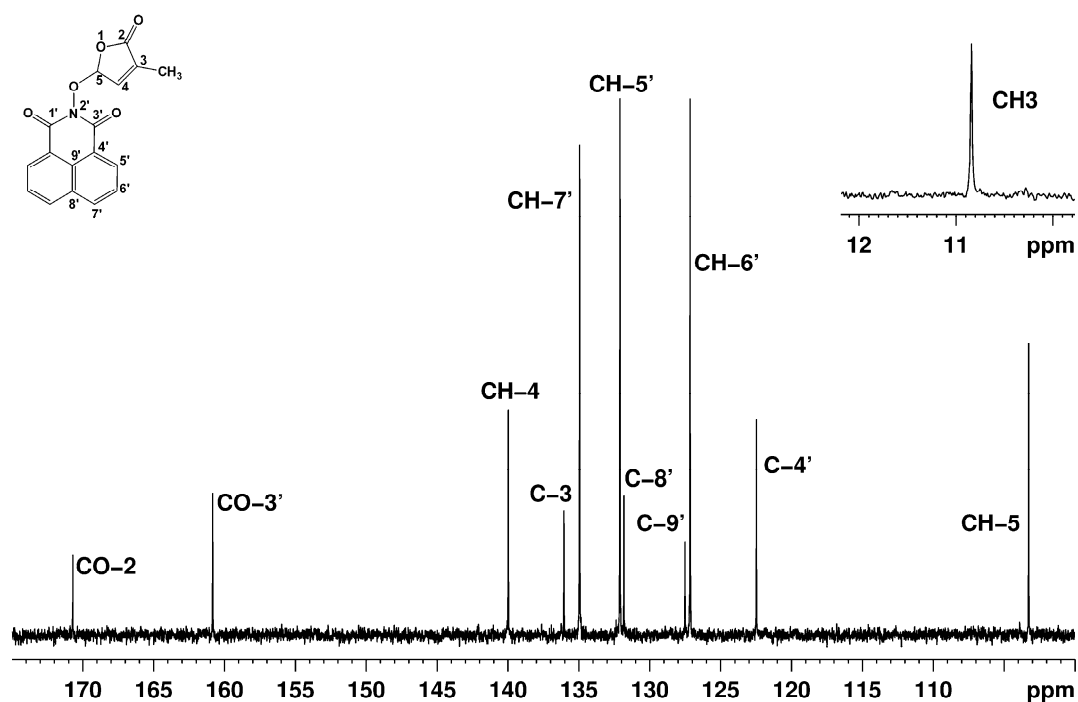


Figure S4. The ^{13}C NMR spectrum for compound **5**, recorded in CDCl₃, showing the assignments of the carbons. The signal corresponding to the methyl group is displayed in the insert.

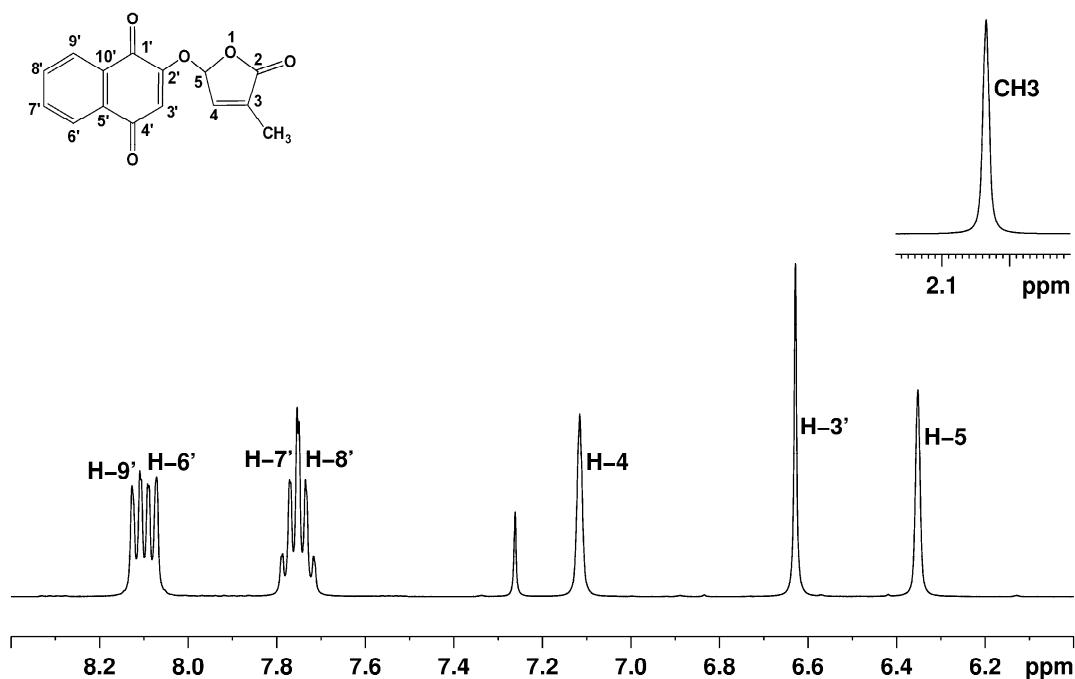


Figure S5. The ¹H NMR spectrum for compound 7, recorded in CDCl₃, showing the assignments of the protons. The signal corresponding to the methyl group is displayed in the insert.

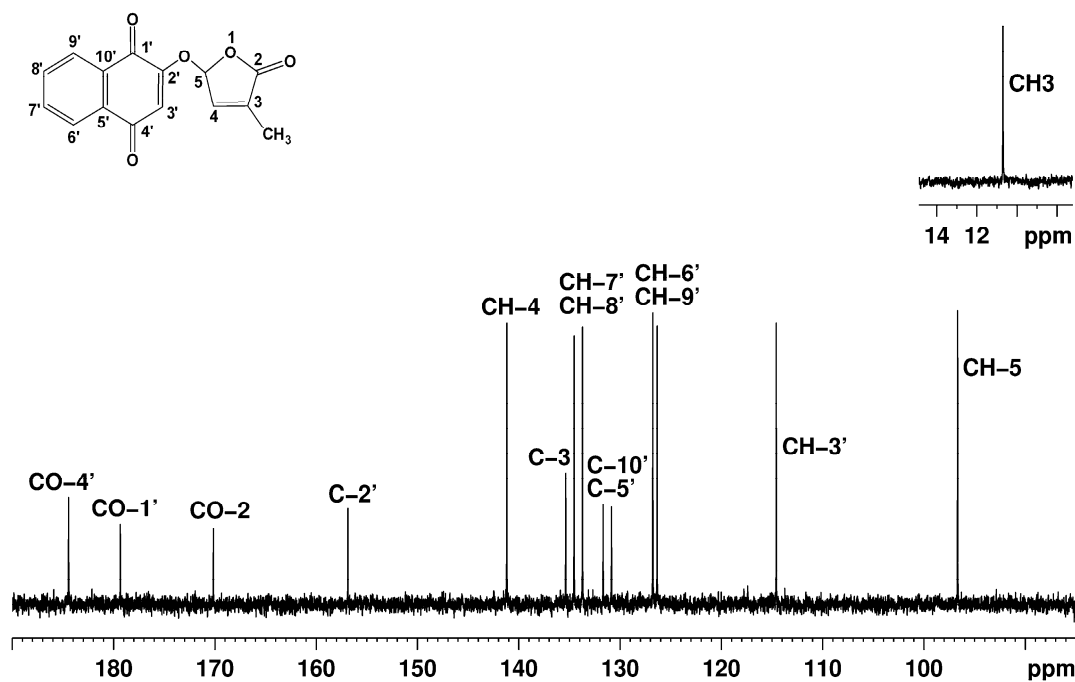


Figure S6. The ¹³C NMR spectrum for compound 7, recorded in CDCl₃, showing the assignments of the carbons. The signal corresponding to the methyl group is displayed in the insert.