

# Supplementary Materials: New 30-Noroleanane Triterpenoid Saponins from *Holboellia coriacea* Diels

Wenbing Ding, Ye Li, Guanhua Li, Hualiang He, Zhiwen Li and Youzhi Li

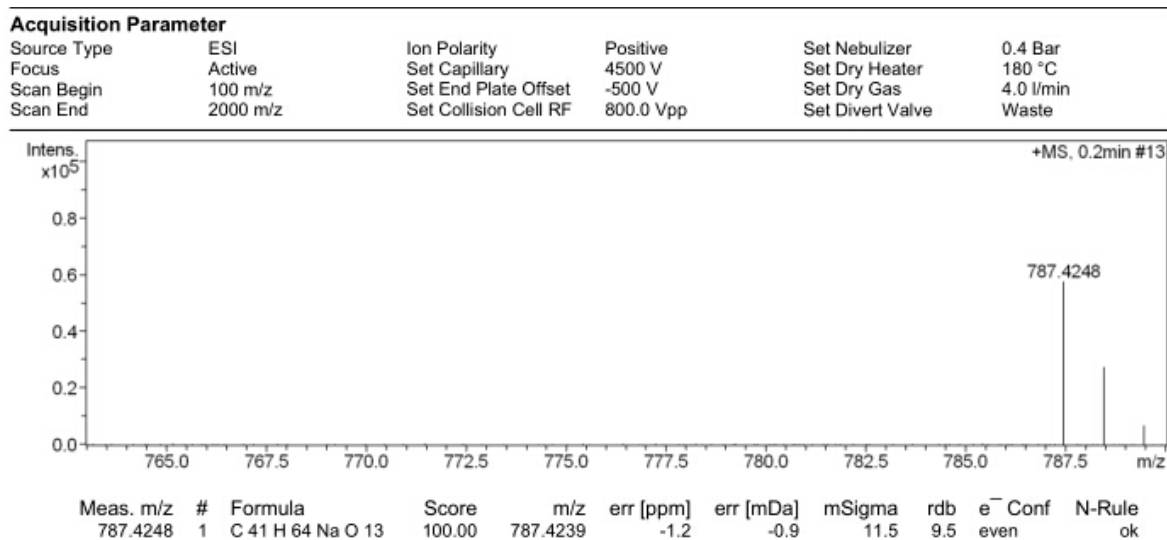


Figure S1. HR-ESIMS of compound 1.

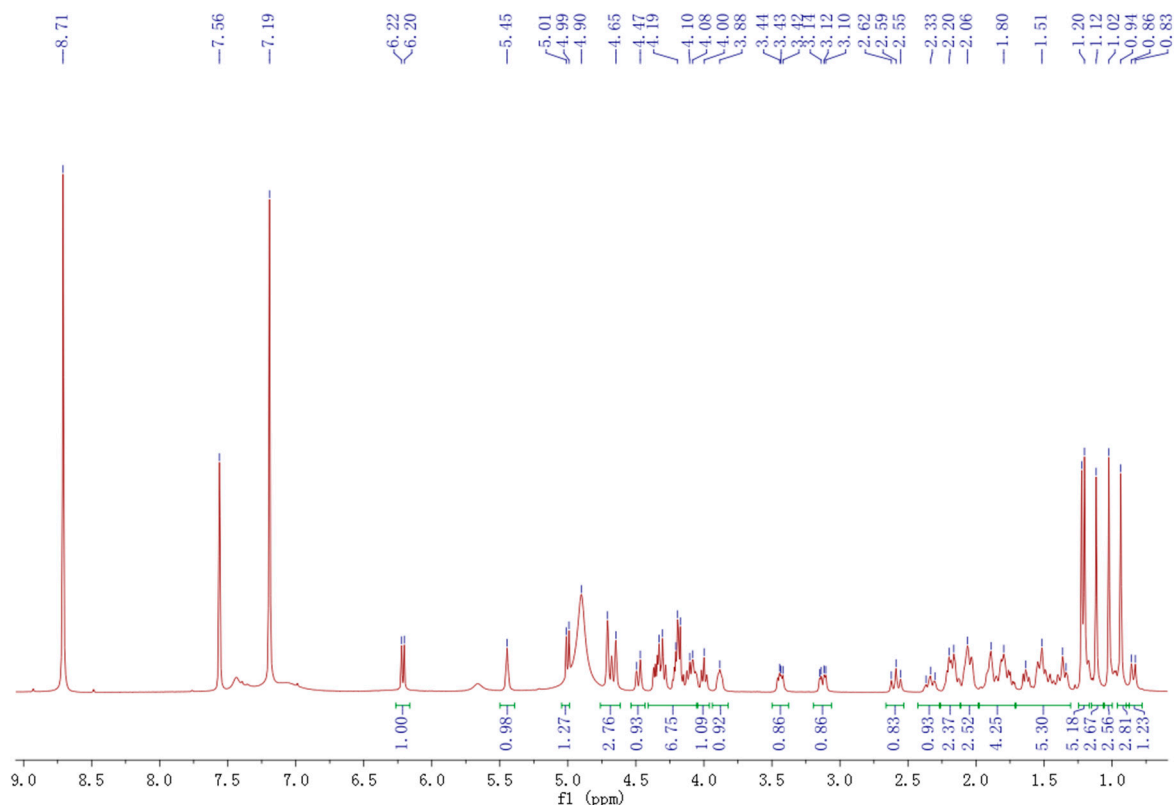
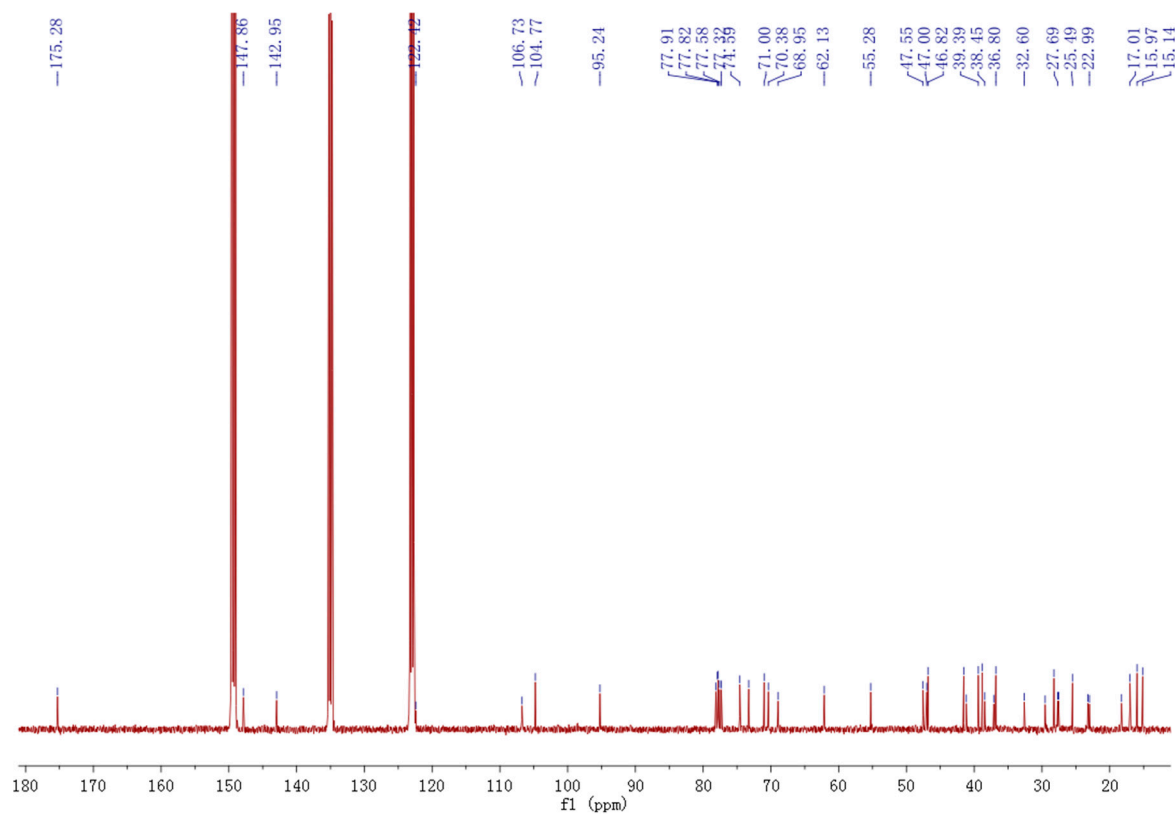
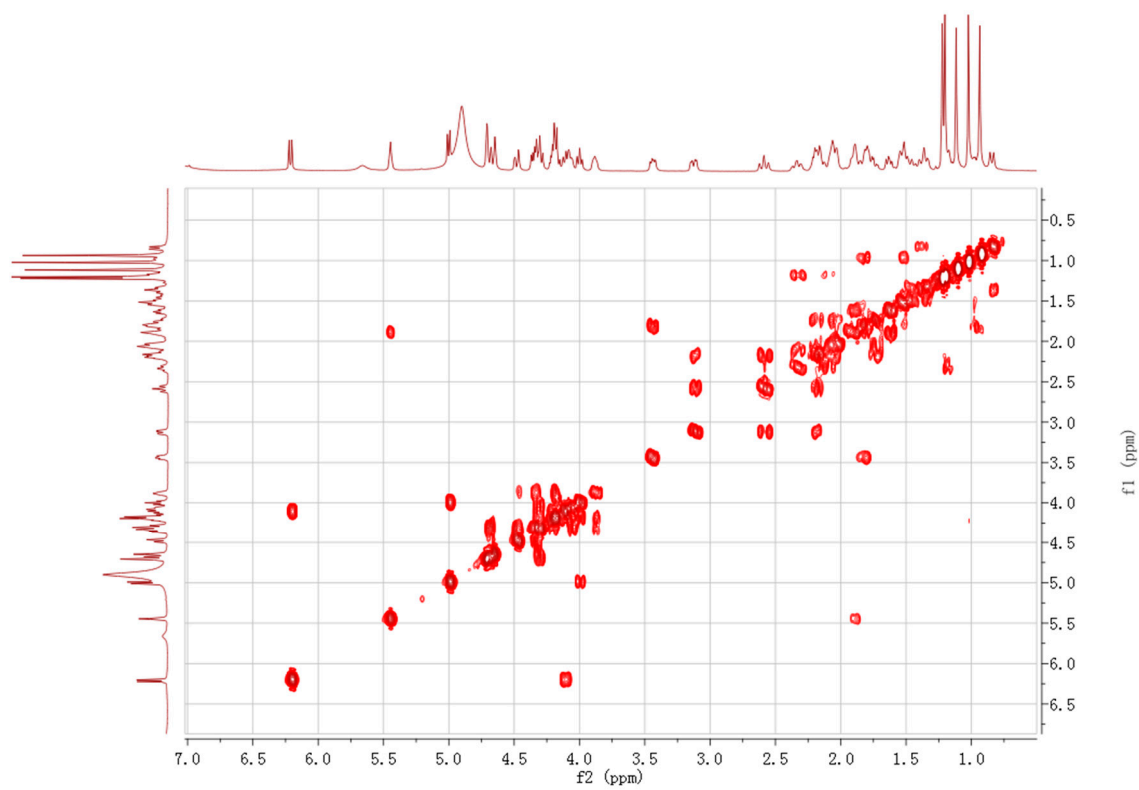


Figure S2. <sup>1</sup>H-NMR of compound 1.

Figure S3. <sup>13</sup>C-NMR of compound 1.Figure S4. <sup>1</sup>H-<sup>1</sup>H COSY of compound 1.

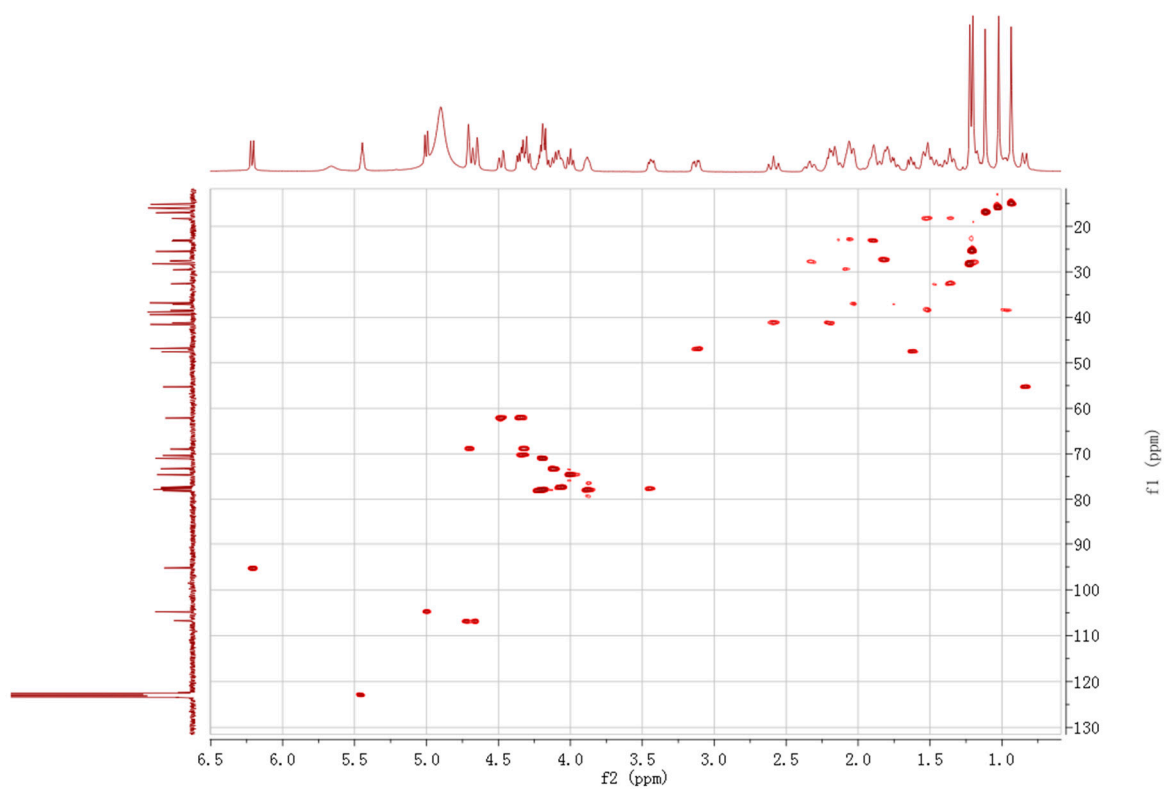


Figure S5. HSQC of compound 1.

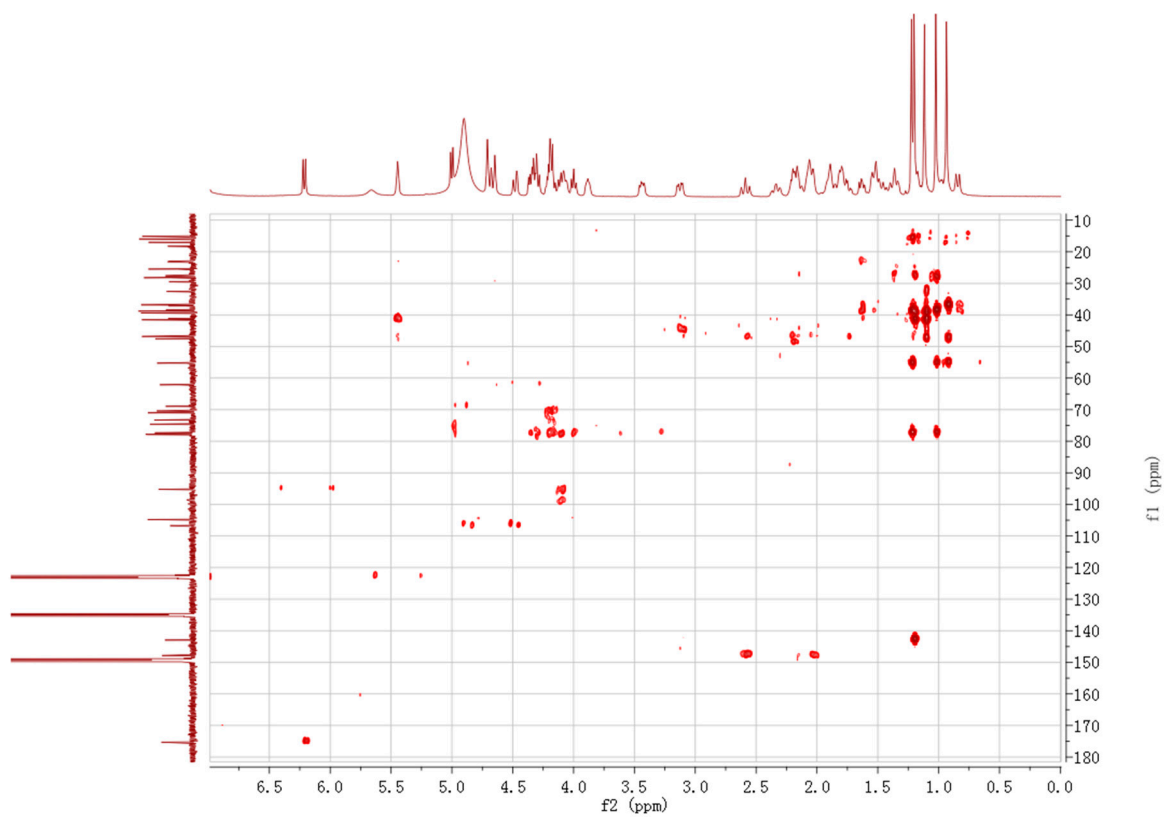


Figure S6. HMBC of compound 1.

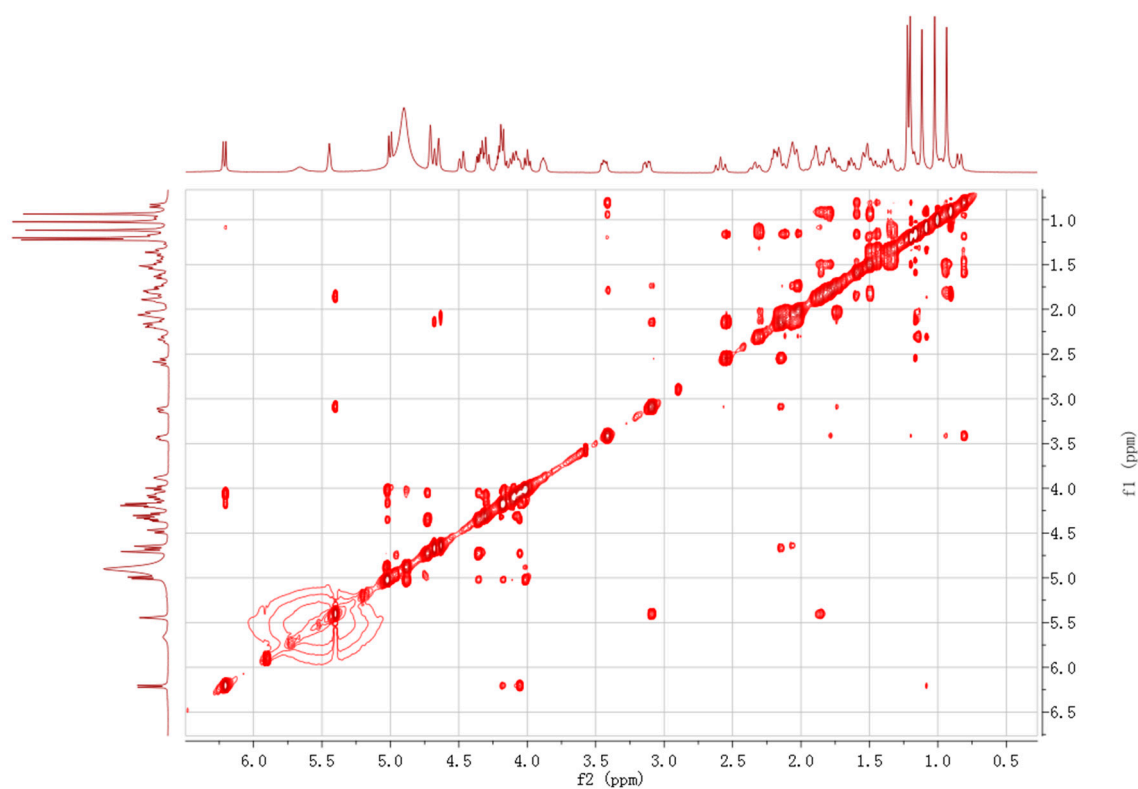


Figure S7. NOESY of compound 1.

**Acquisition Parameter**

Source Type	ESI	Ion Polarity	Negative	Set Nebulizer	0.4 Bar
Focus	Active	Set Capillary	3800 V	Set Dry Heater	180 °C
Scan Begin	100 m/z	Set End Plate Offset	-500 V	Set Dry Gas	4.0 l/min
Scan End	2000 m/z	Set Collision Cell RF	550.0 Vpp	Set Divert Valve	Waste

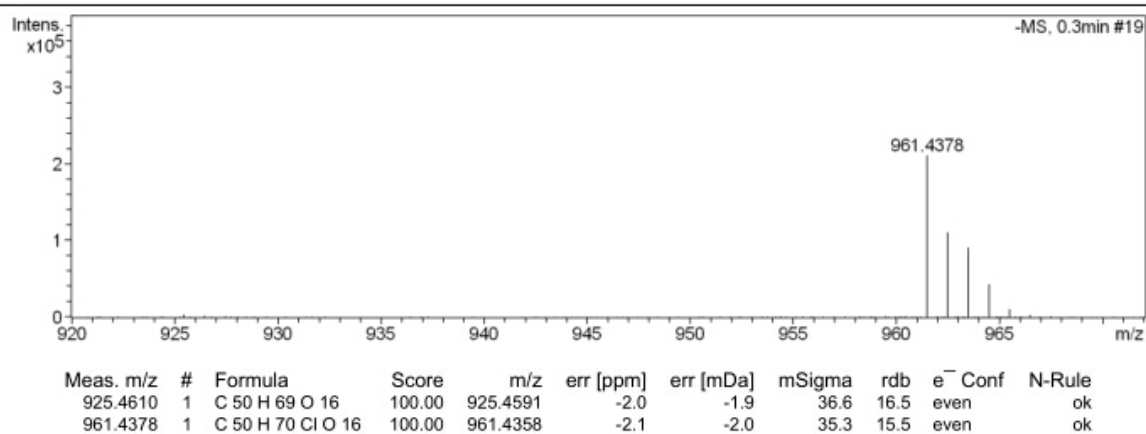
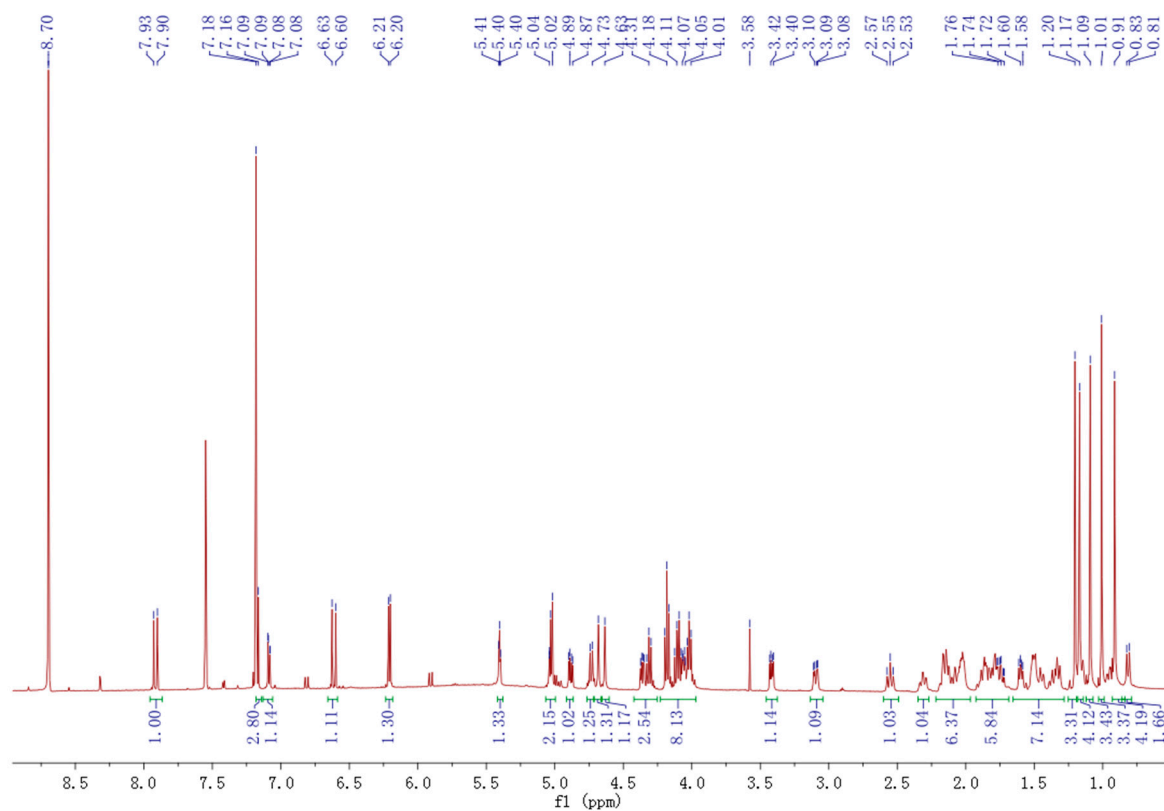
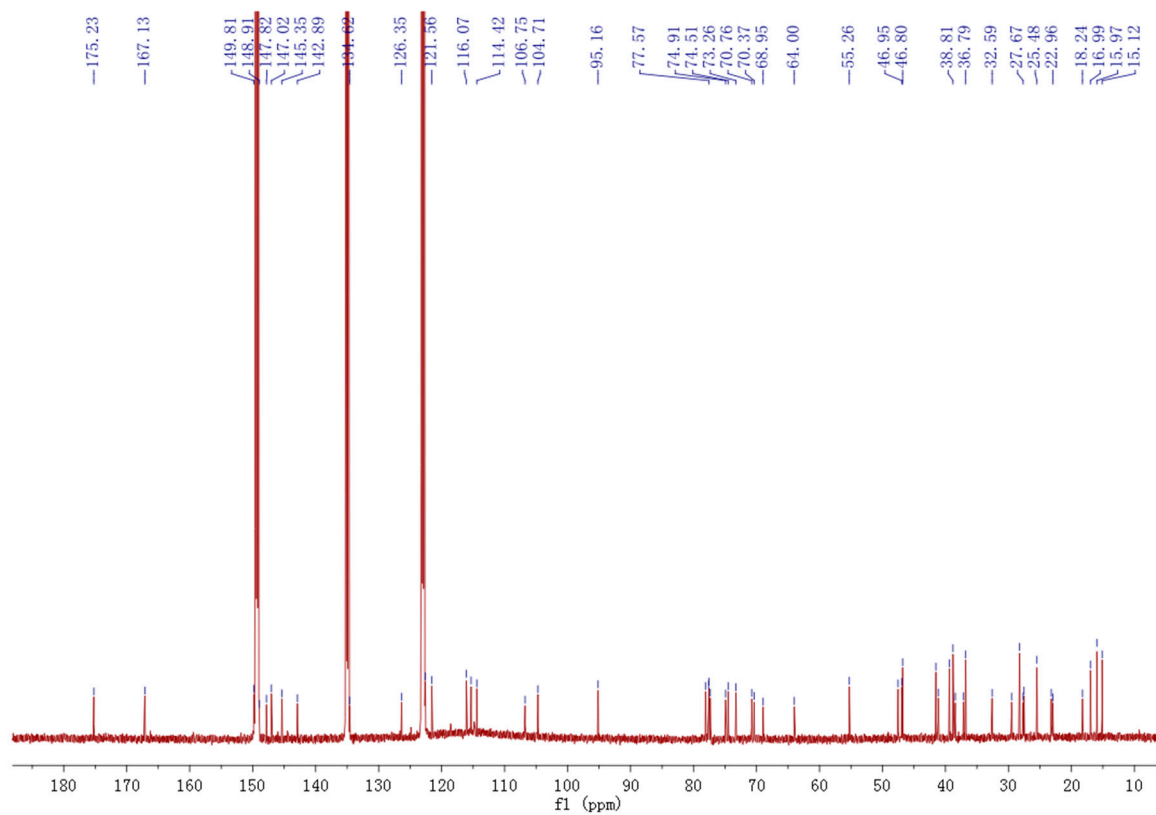


Figure S8. HR-ESIMS of compound 2.

Figure S9. <sup>1</sup>H-NMR of compound 2.Figure S10. <sup>13</sup>C-NMR of compound 2.

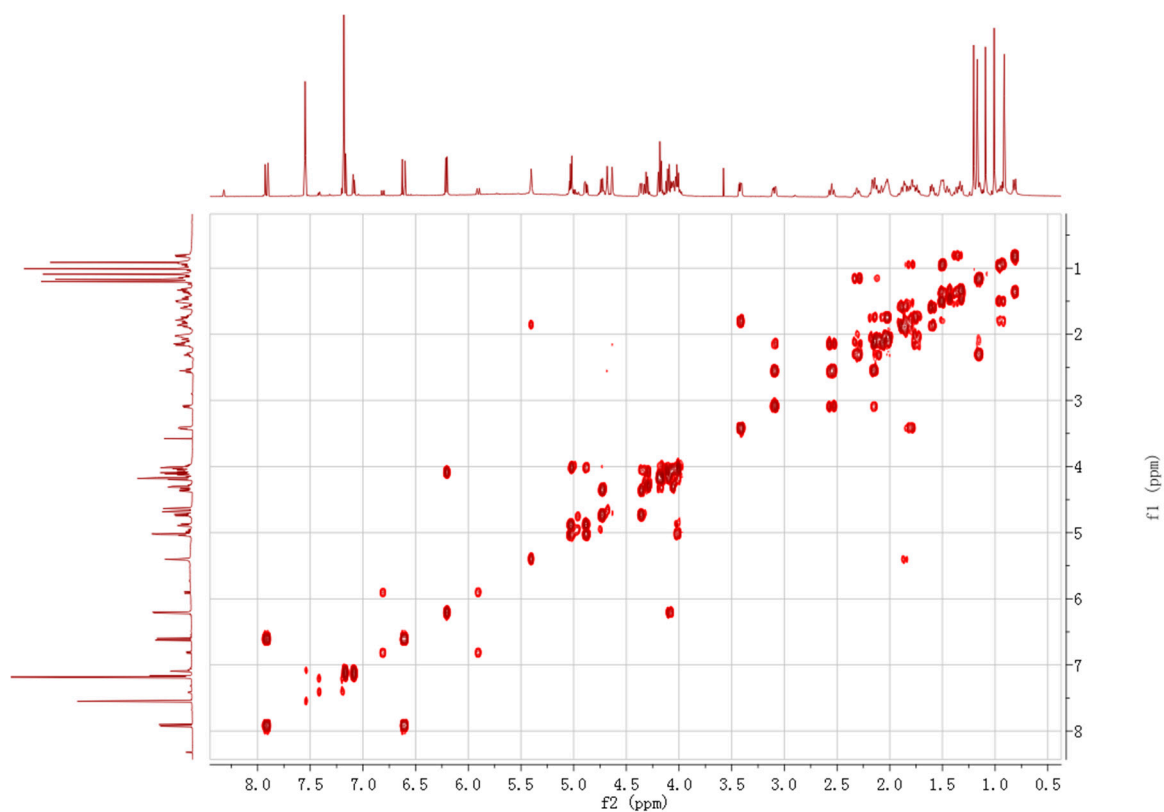


Figure S11.  $^1\text{H}$ - $^1\text{H}$  COSY of compound 2.

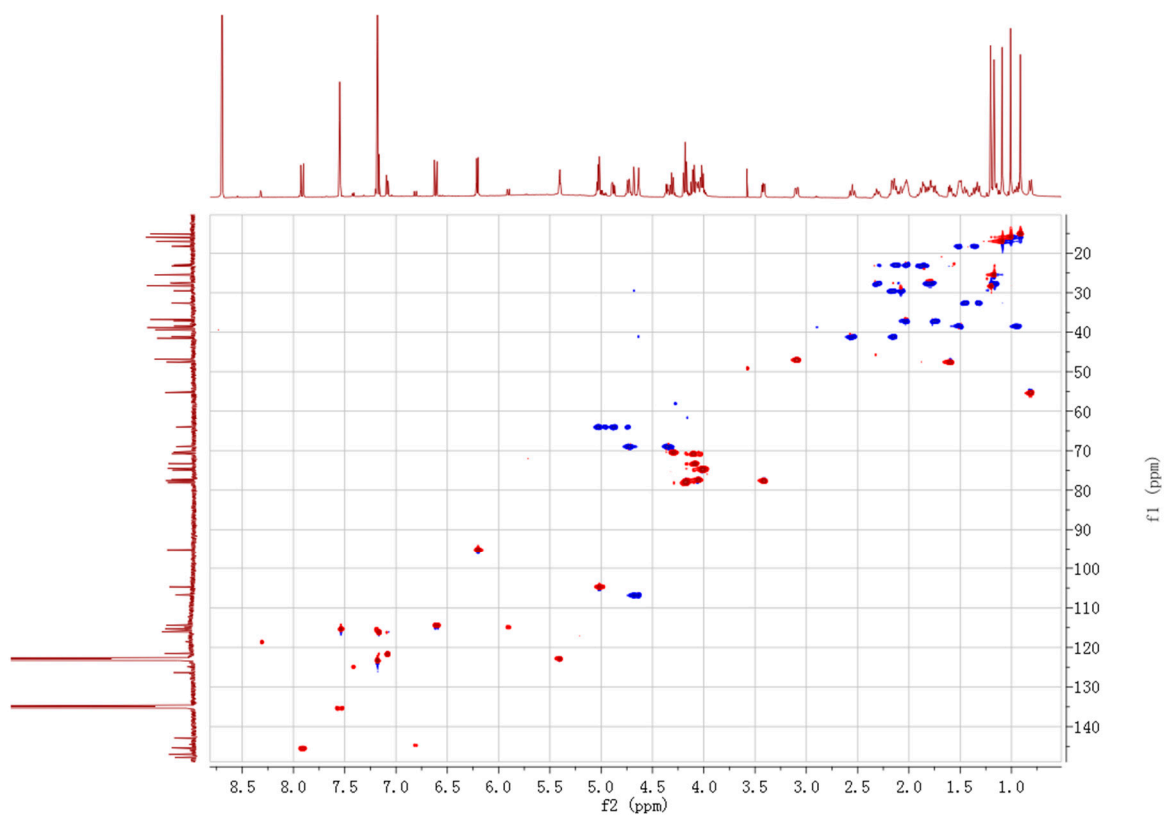


Figure S12. HSQC of compound 2.

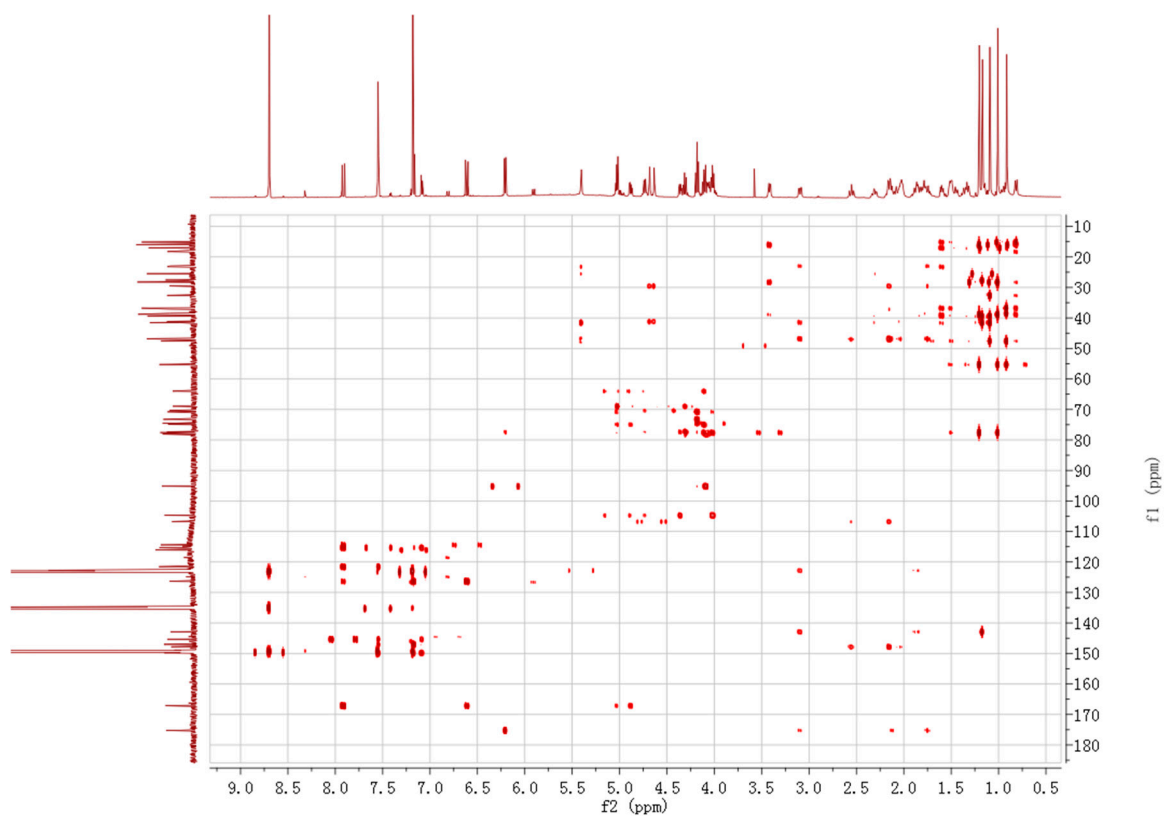


Figure S13. HMBC of compound 2.

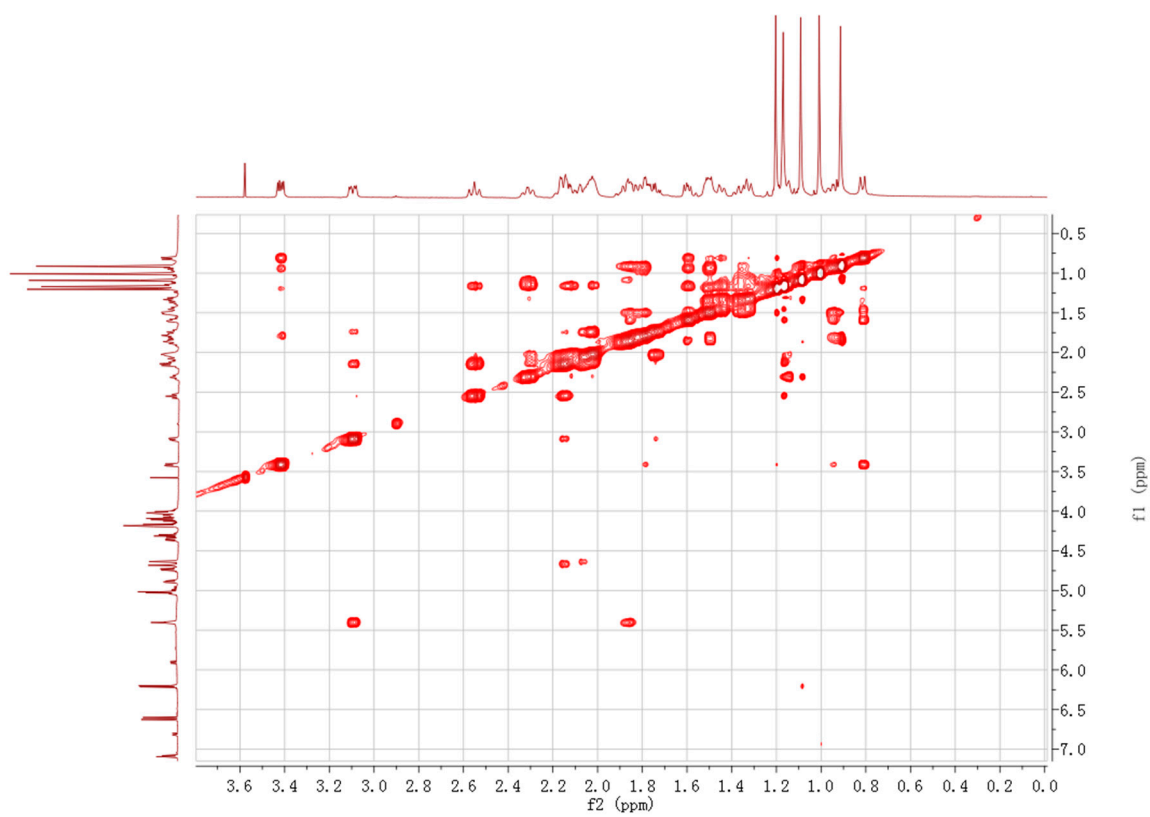


Figure S14. NOESY of compound 2.

**Acquisition Parameter**

Source Type	ESI	Ion Polarity	Negative	Set Nebulizer	0.4 Bar
Focus	Active	Set Capillary	3800 V	Set Dry Heater	180 °C
Scan Begin	100 m/z	Set End Plate Offset	-500 V	Set Dry Gas	4.0 l/min
Scan End	2000 m/z	Set Collision Cell RF	550.0 Vpp	Set Divert Valve	Waste

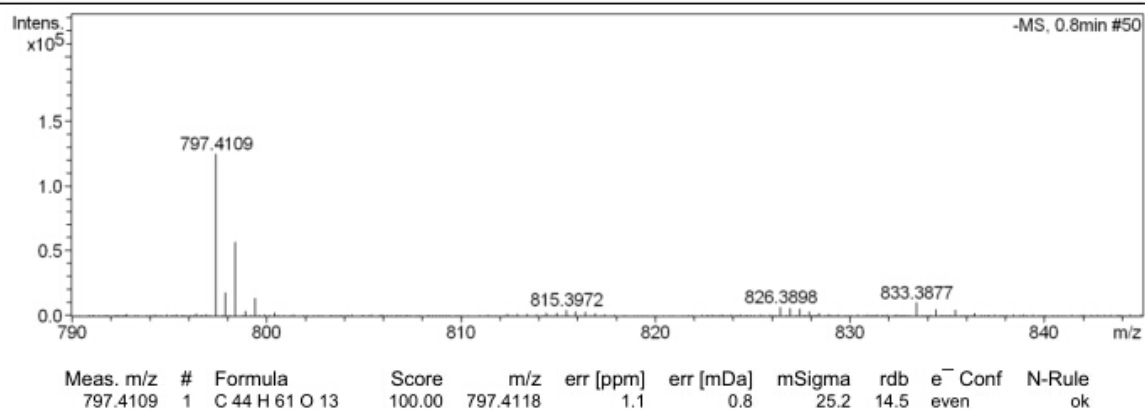
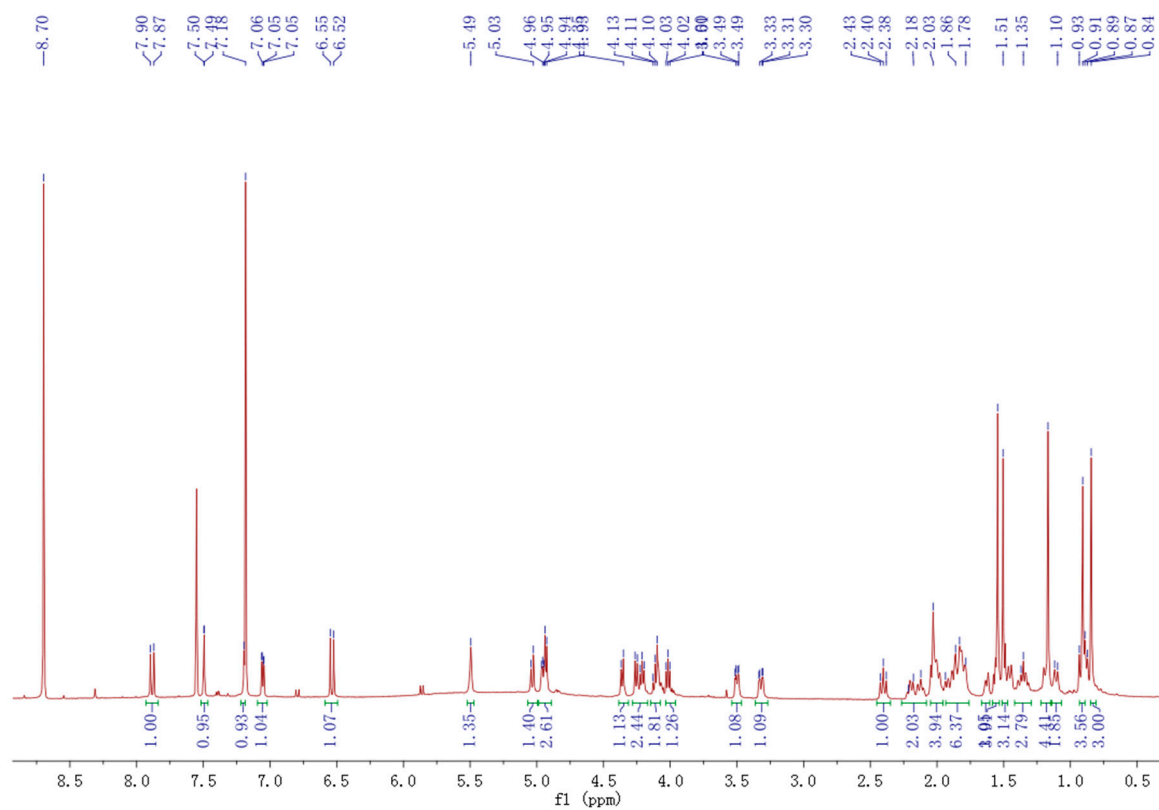
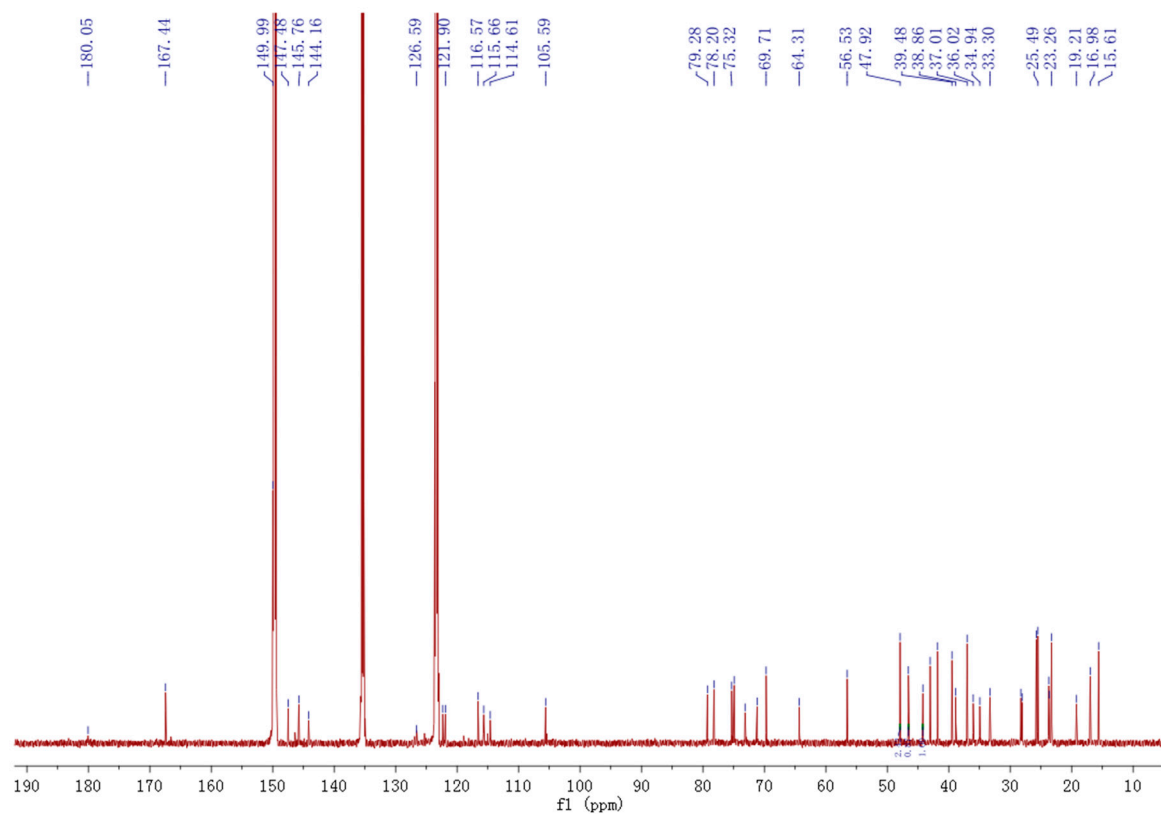
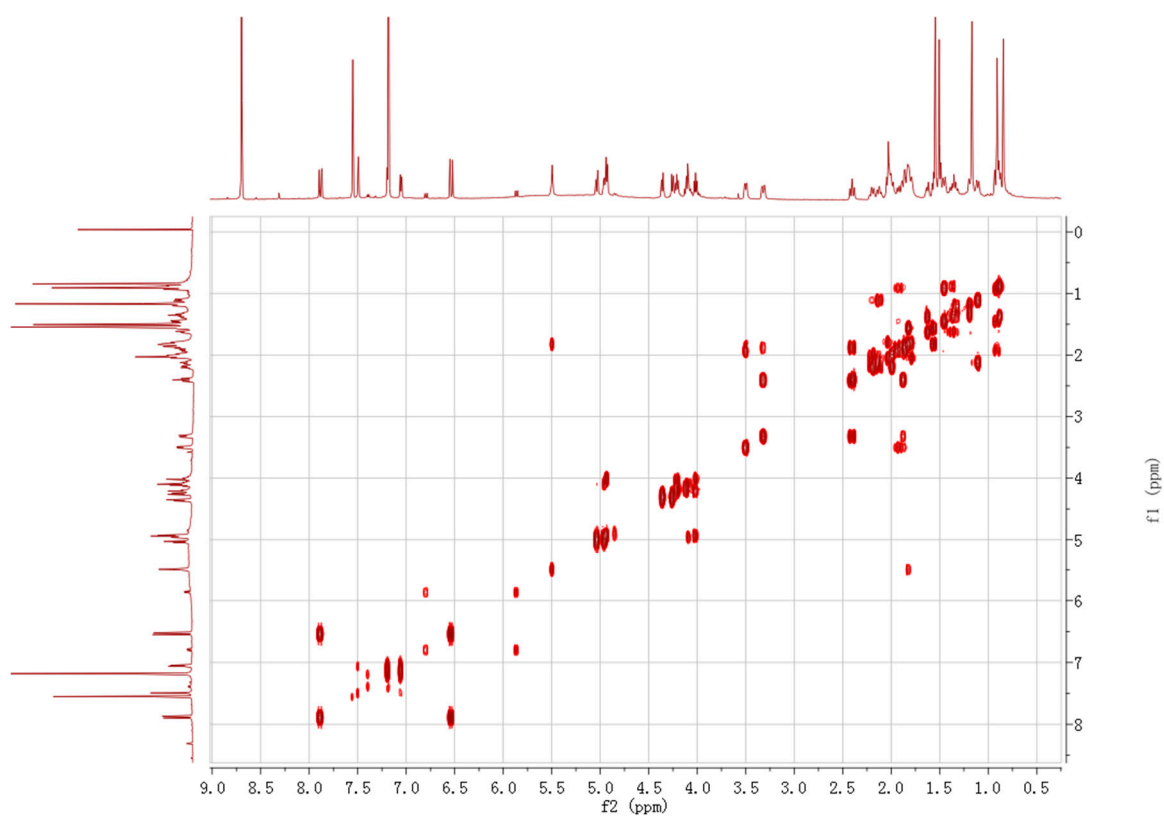


Figure S15. HR-ESIMS of compound 3.

Figure S16. <sup>1</sup>H-NMR of compound 3.



Figure S17. <sup>13</sup>C-NMR of compound 3.Figure S18. <sup>1</sup>H-<sup>1</sup>H COSY of compound 3.

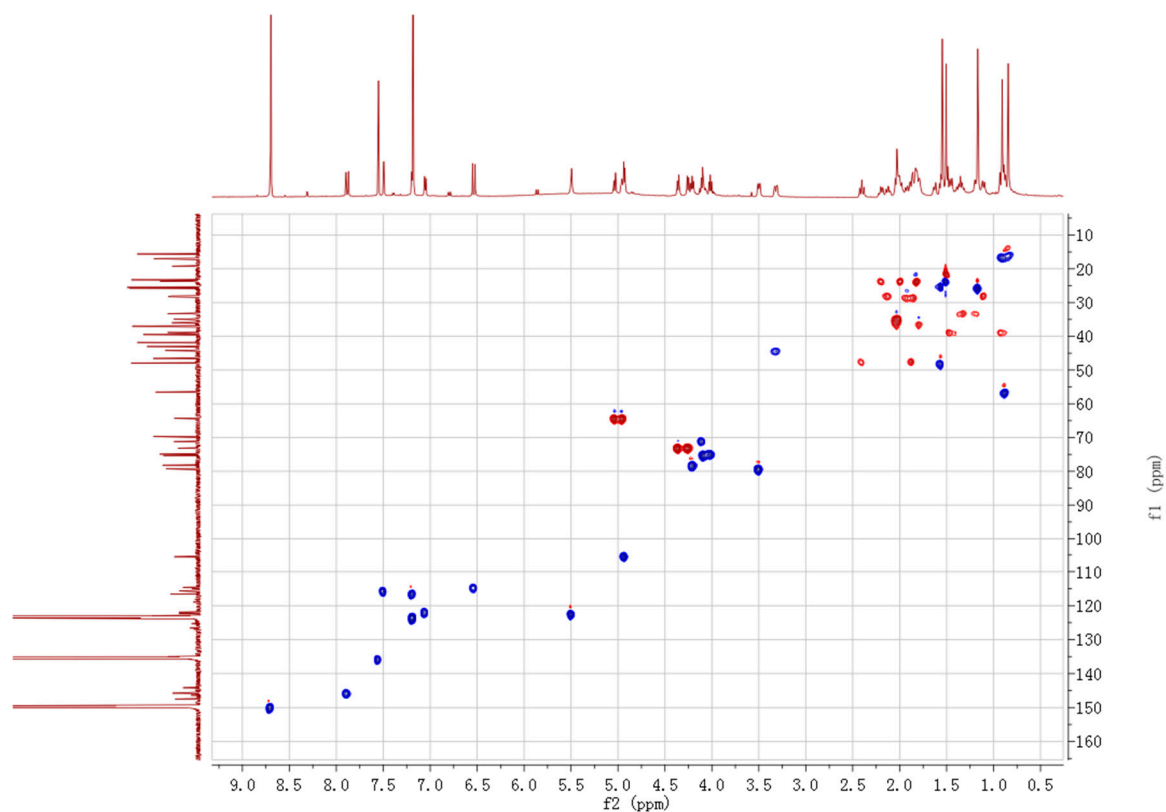


Figure S19. HSQC of compound 3.

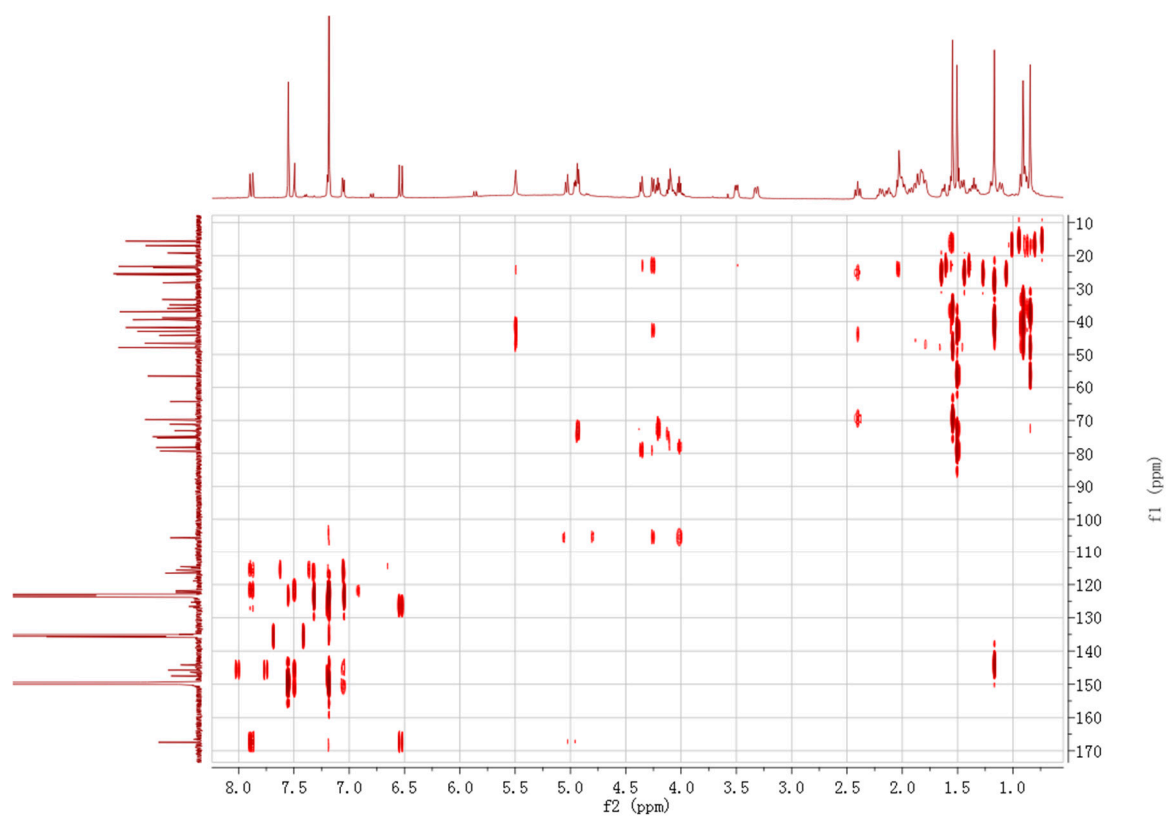


Figure S20. HMBC of compound 3.

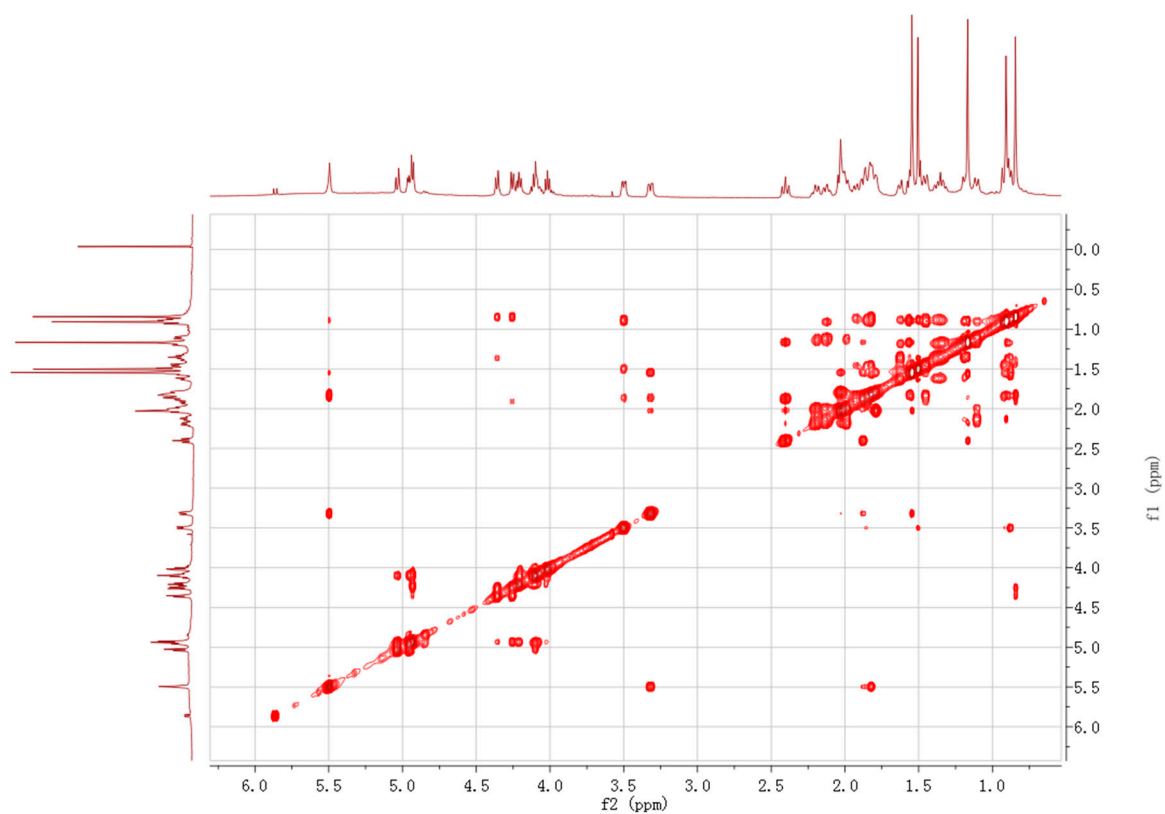


Figure S21. NOESY of compound 3.