

Supplementary Materials

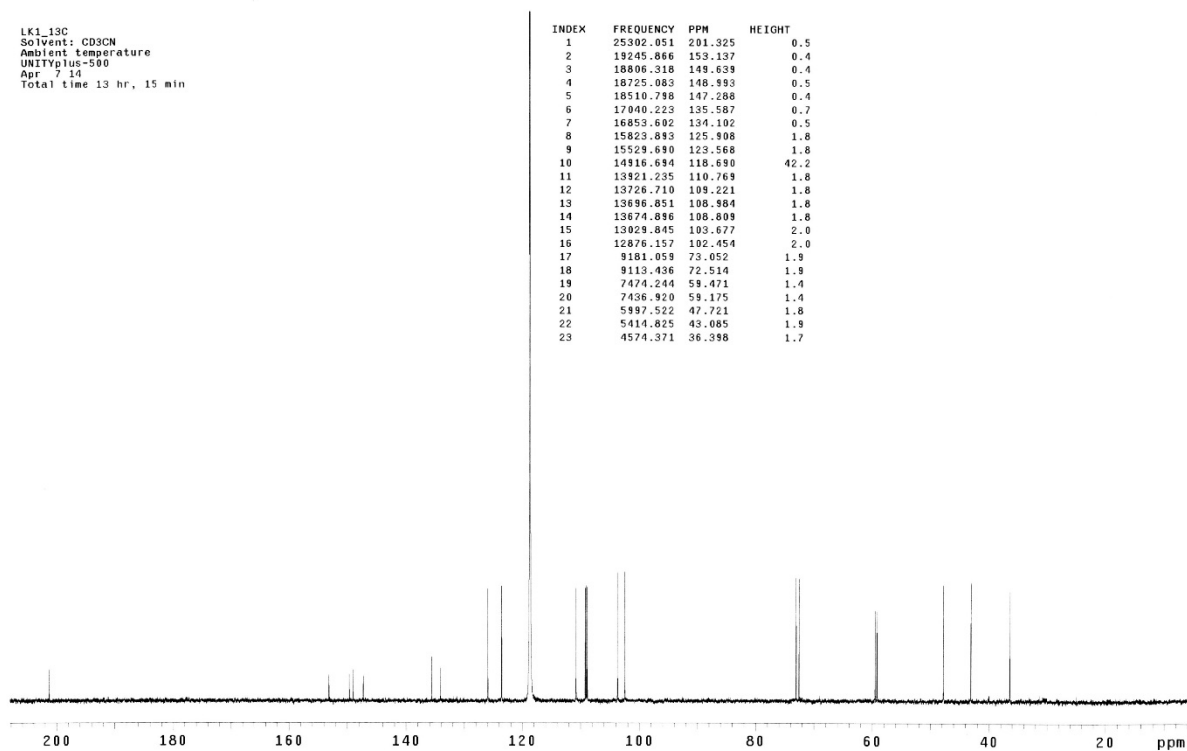


Figure S1. ^{13}C -NMR spectrum of compound **1**.

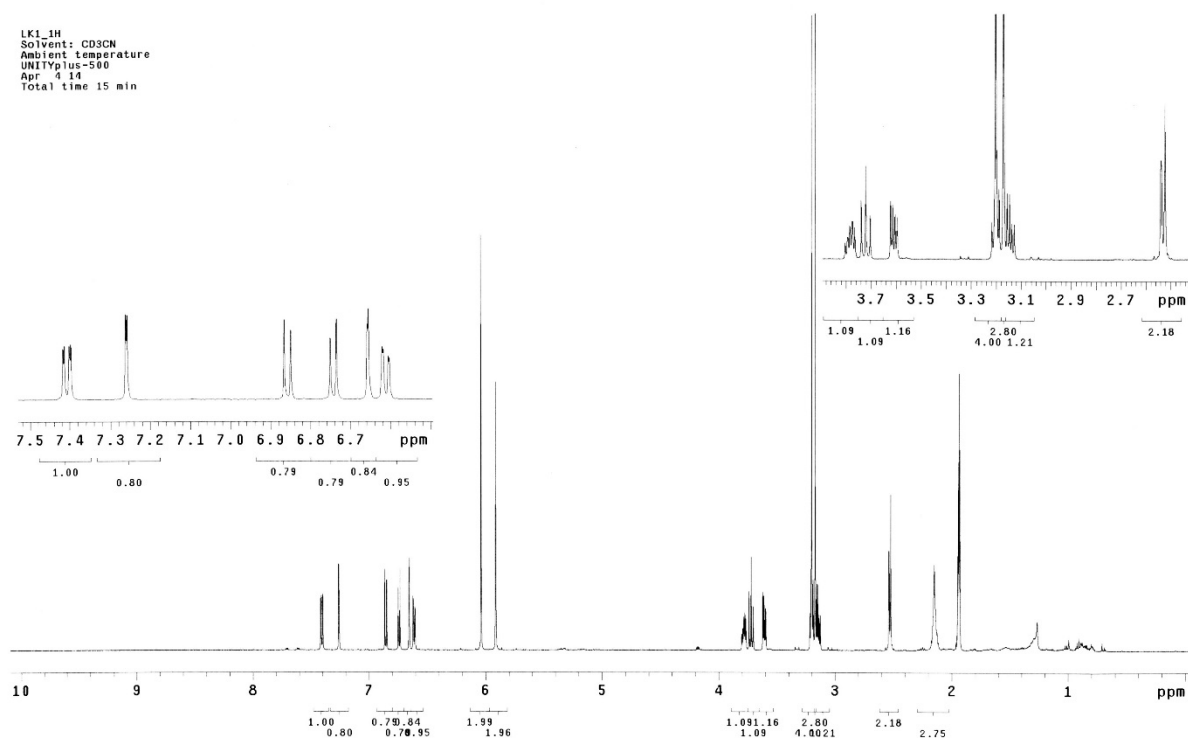


Figure S2. ^1H -NMR spectrum of compound **1**.

LK1_gcosy
Solvent: CD3CN
Ambient temperature
UNITYplus-500
Apr 4 14
Total time 15 min

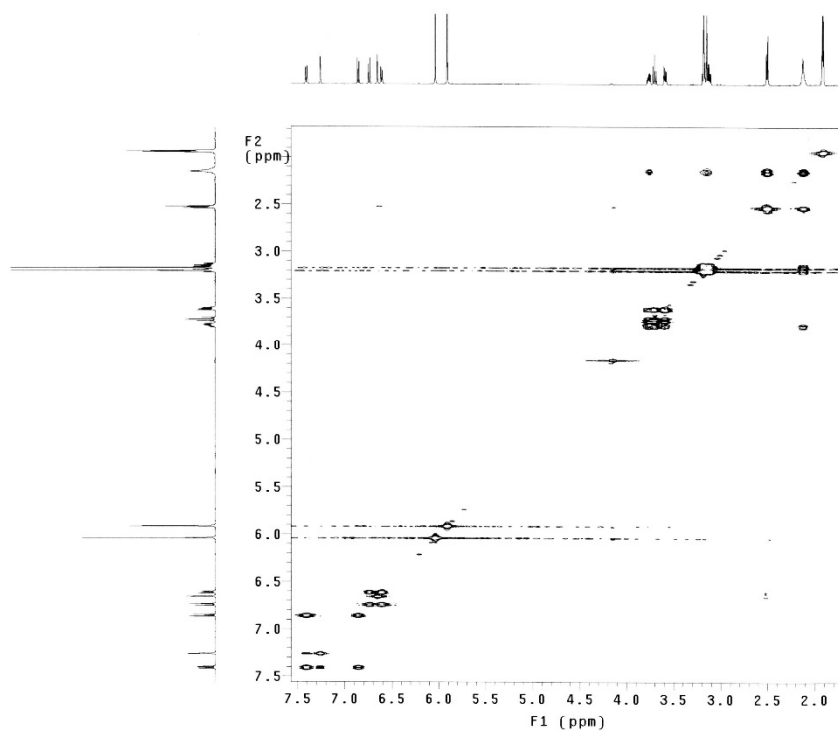


Figure S3. COSY spectrum of compound **1**.

LK1_gmhc
Solvent: CD3CN
Ambient temperature
UNITYplus-500
Apr 4 14

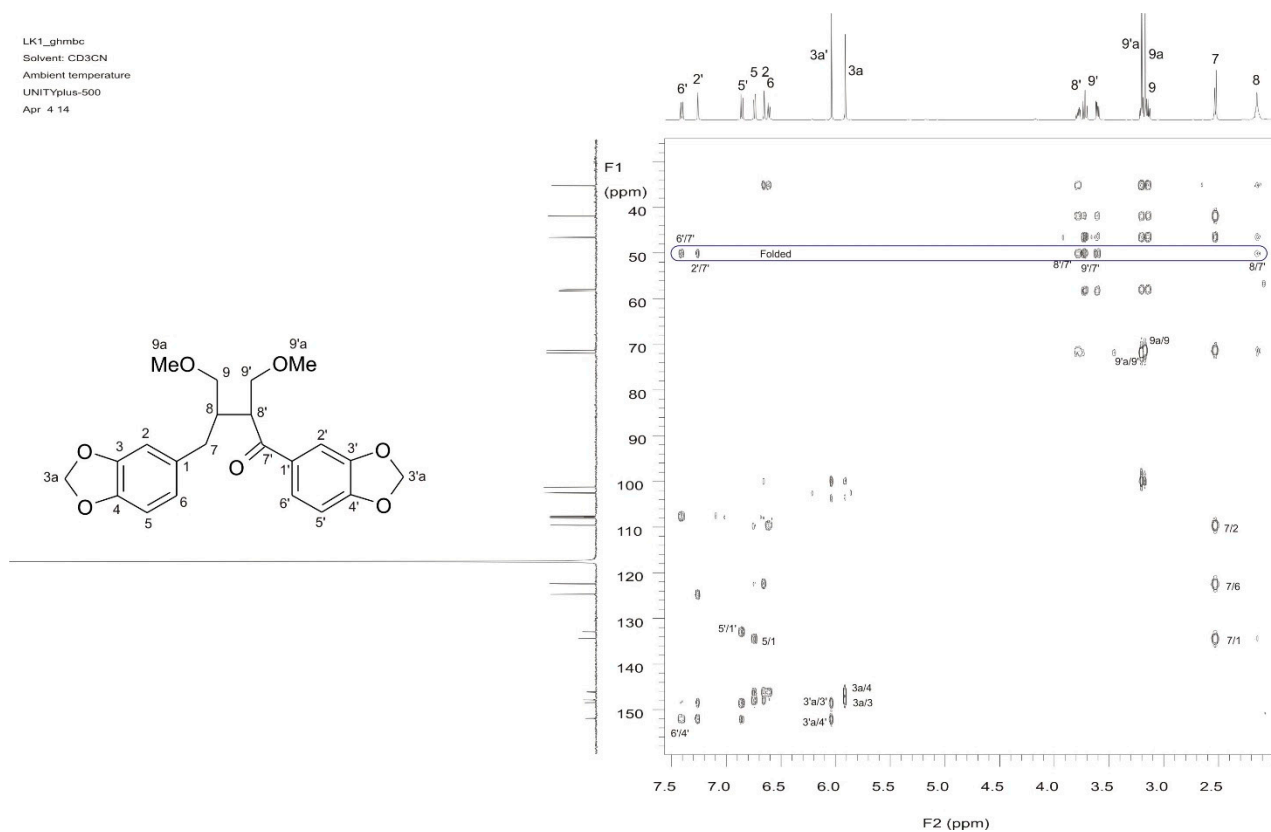


Figure S4. HMBC spectrum of compound **1**.

LK1_ghsqc
Solvent: CD3CN
Ambient temperature
UNITYplus-500
Apr 4 14
Total time 1 hr

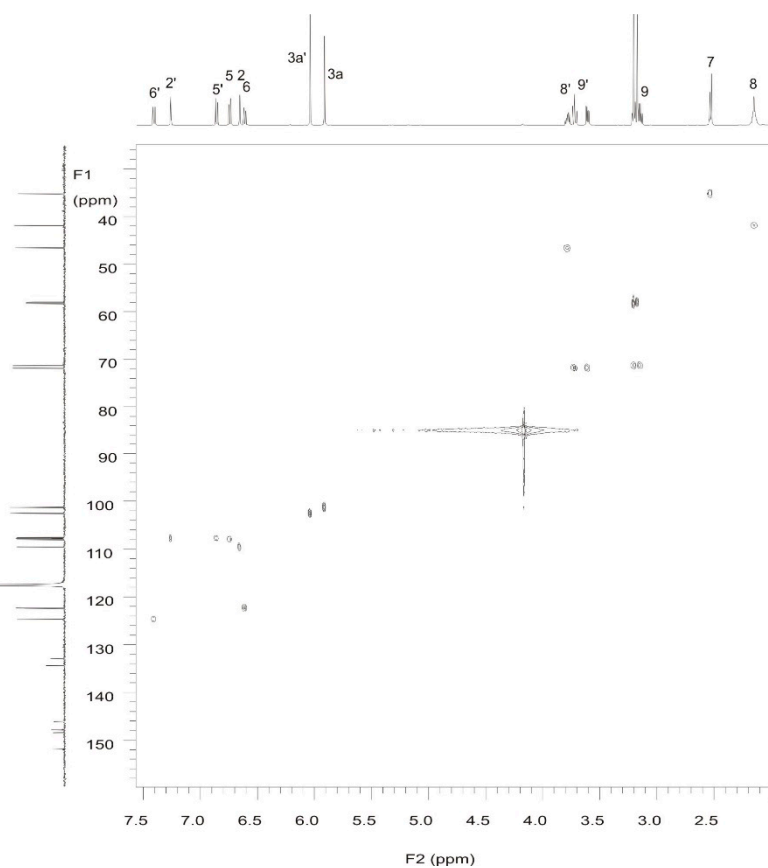
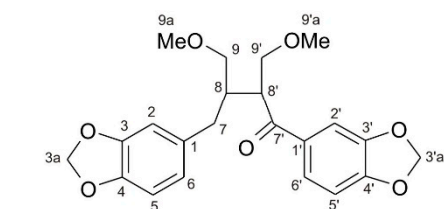


Figure S5. HSQC spectrum of compound **1**.

LK1_roesy
Solvent: CD3CN
Ambient temperature
UNITYplus-500
Apr 4 14

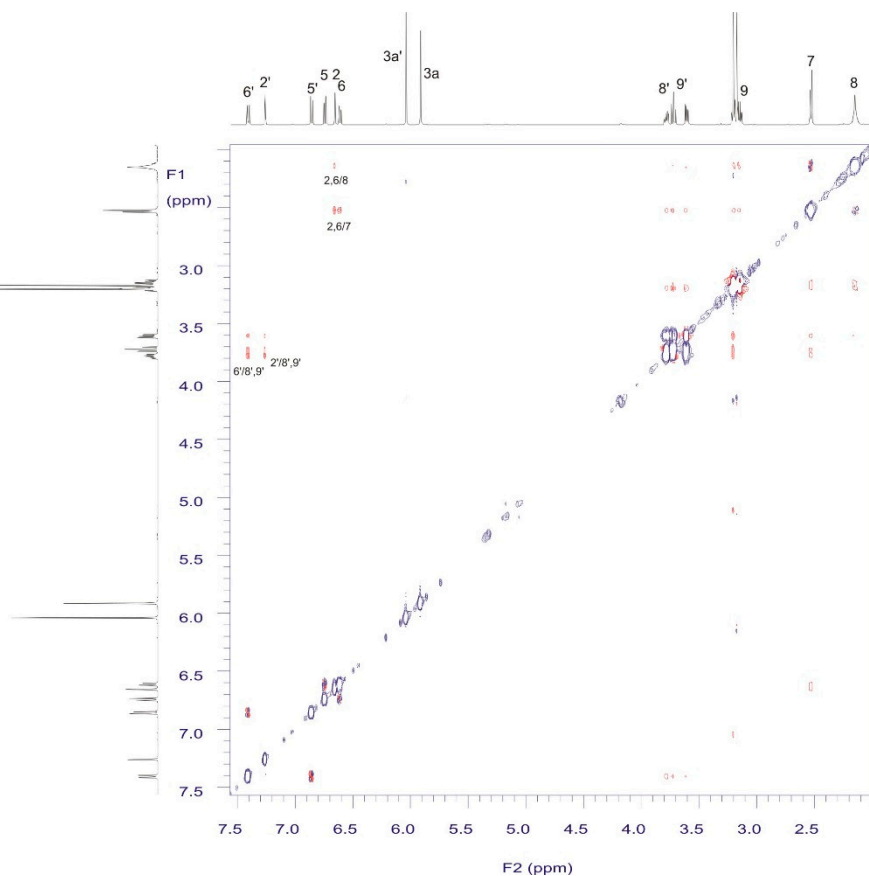
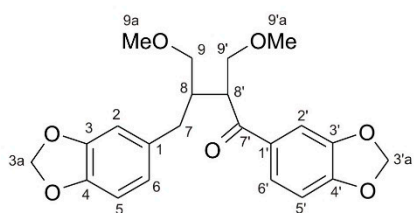


Figure S6. ROESY spectrum of compound **1**.

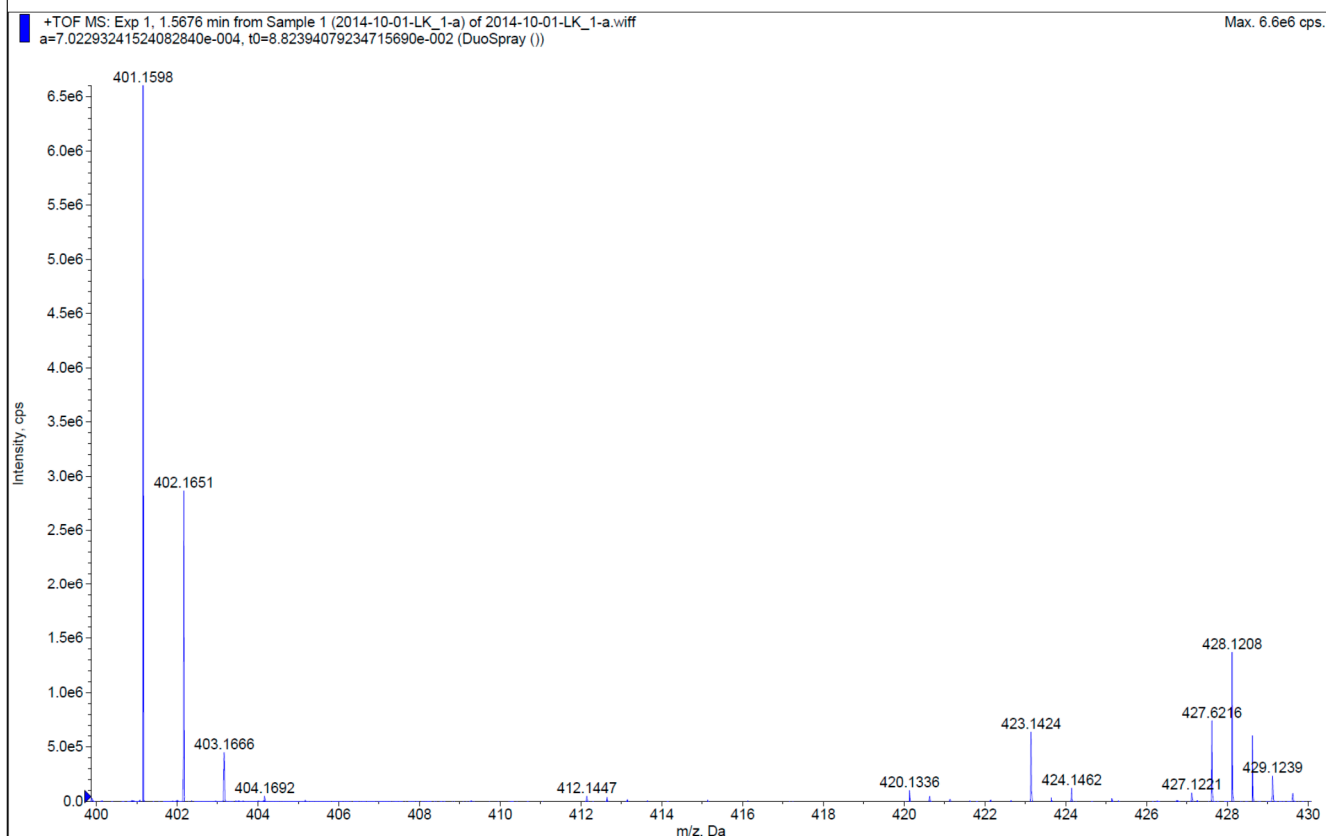
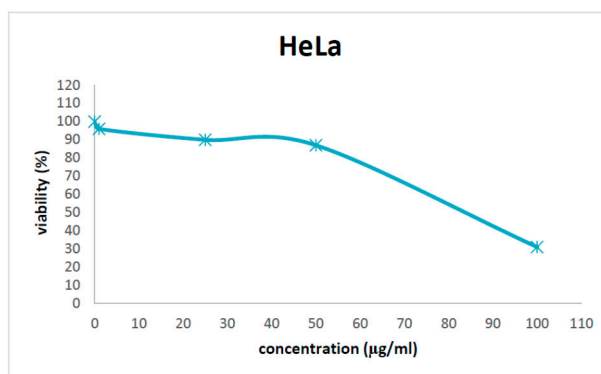


Figure S7. MS spectrum of compound **1**.

The dose-response curves for cytotoxicity data.

Cytotoxicity of methanol extract from non-transformed roots of *P. amarus* against HeLa cell line



Cytotoxicity of compound **1** – 7'-oxocubebin dimethyl ether against HeLa and HaCaT cell lines.

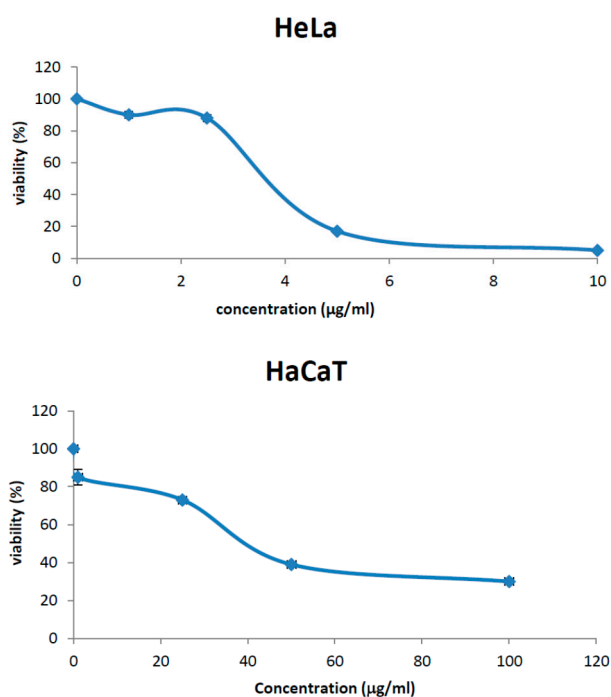


Figure S8. Dose-response curves for cytotoxicity of compound **1**.