

Supplementary Materials

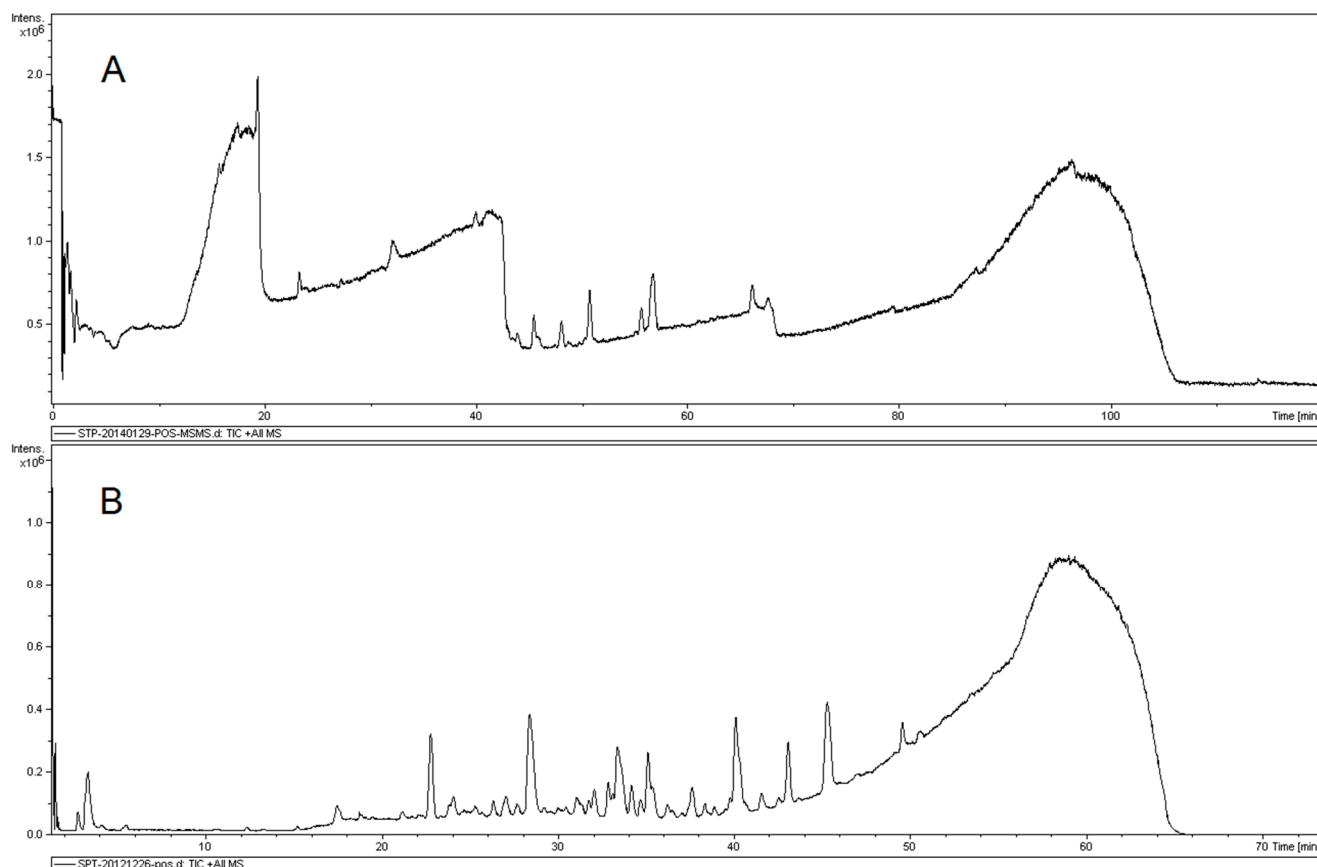


Figure S1. The HPLC-Q-TOF-MS/MS total ion chromatogram of STP by different mobile phases. **(A)** TIC of water/methanol as the mobile phases; **(B)** TIC of water/acetonitrile as the mobile phases.

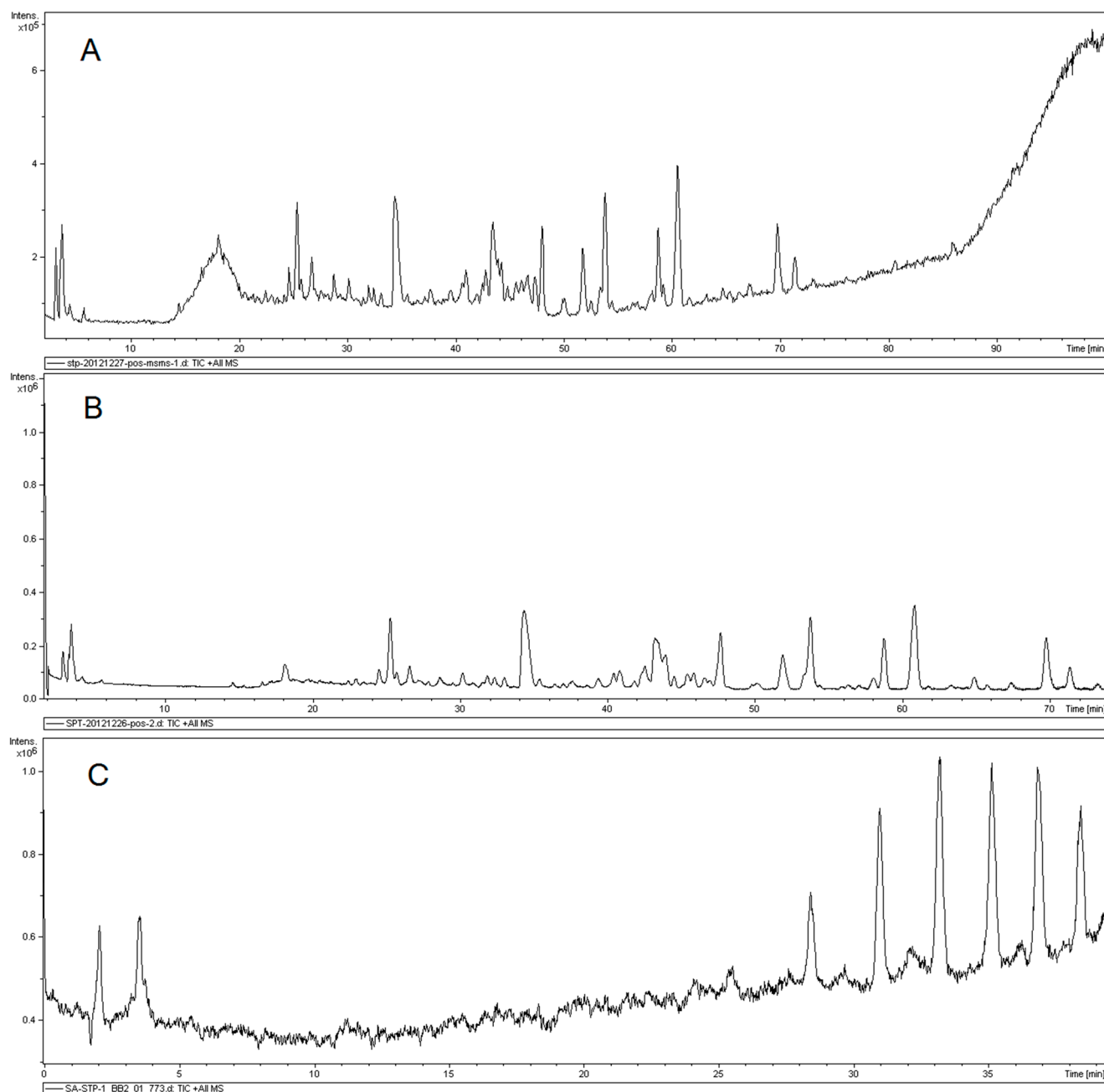


Figure S2. The HPLC-Q-TOF-MS/MS total ion chromatogram of STP by different acids in the mobile phases. **(A)** TIC of formic acid in the mobile phases; **(B)** TIC of trifluoroacetic acid in the mobile phases; **(C)** TIC of phosphoric acid in the mobile phases.

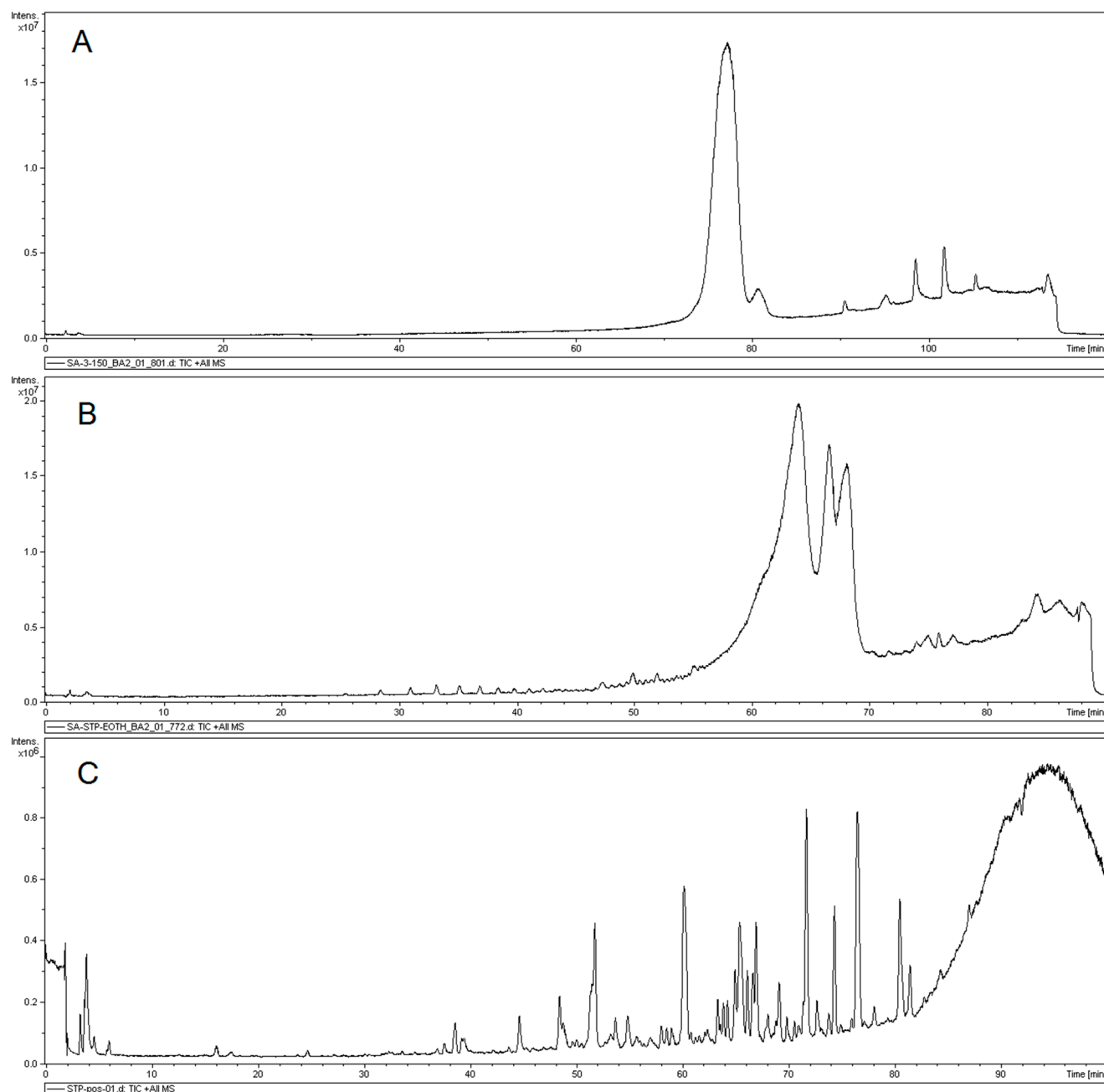


Figure S3. The HPLC-Q-TOF-MS/MS total ion chromatogram of STP by different chromatographic columns. **(A)** TIC of Agilent C18; **(B)** TIC of Ultimate XB ODS-C18 column; **(C)** TIC of Inertsil ODS-SP C18 column.

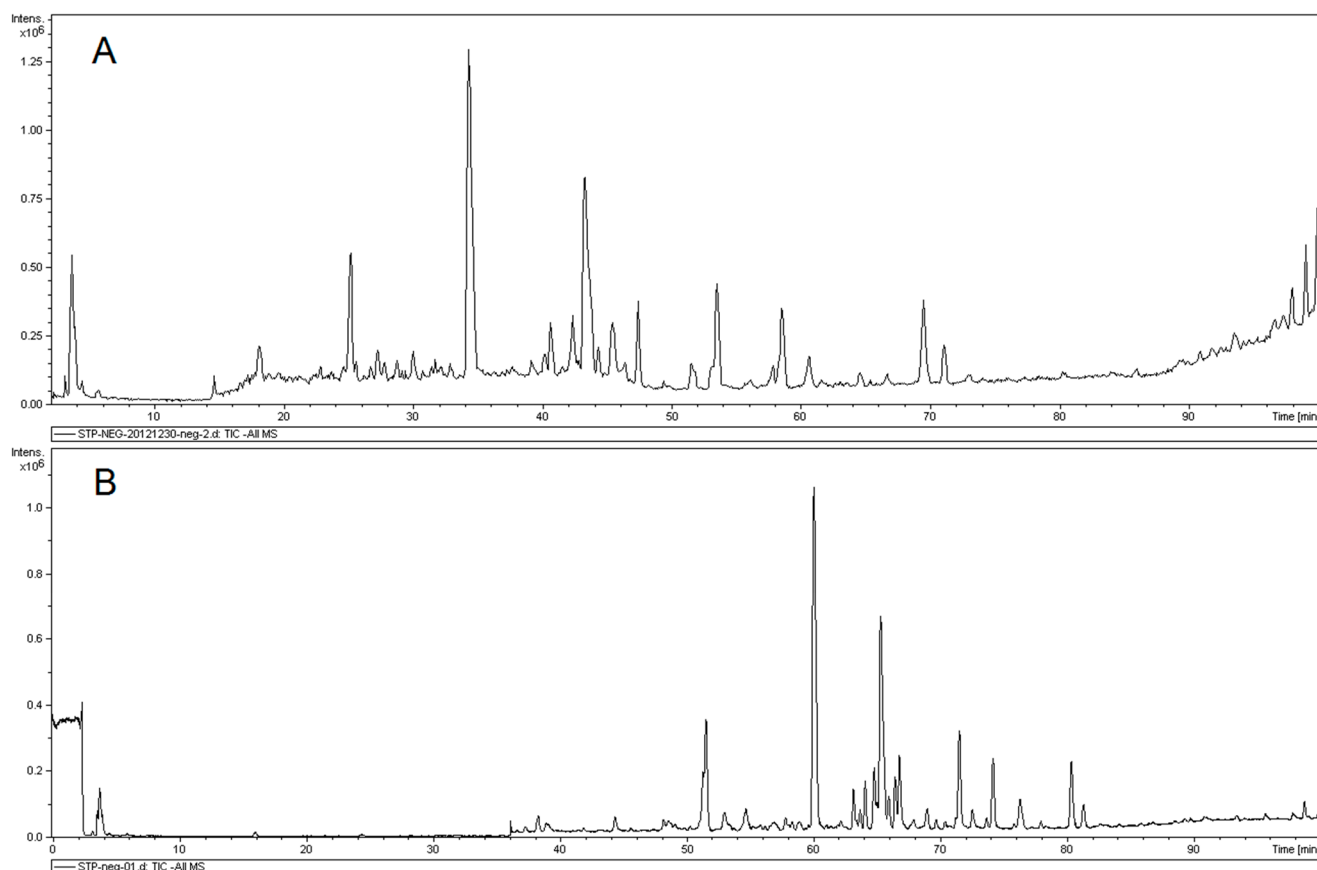


Figure S4. The HPLC-Q-TOF-MS/MS total ion chromatogram of STP by different programs of gradient elution in negative model. Both (A) and (B) are the different programs which had been tried.