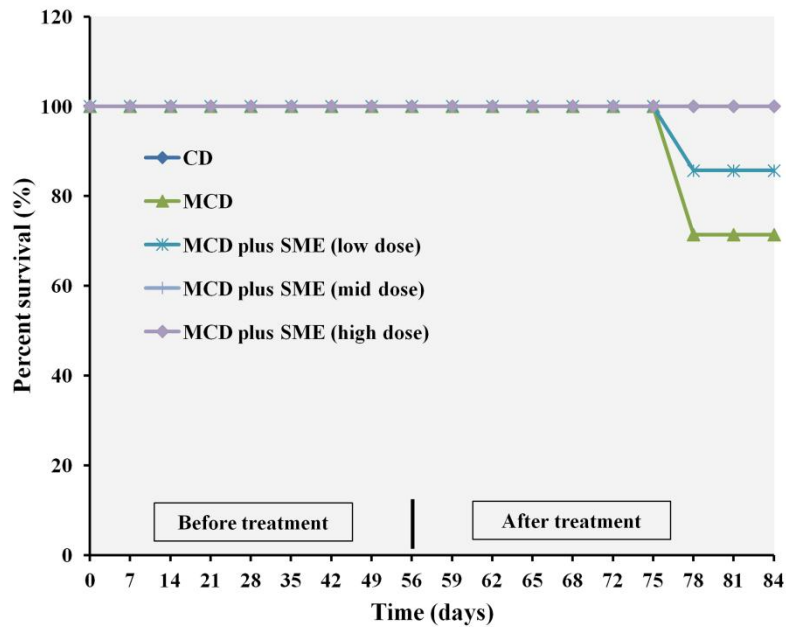


Supplementary Materials

Figure 1. Survival curves of animals used in MCD diet-induced NASH model. After 8 weeks of the MCD diet to induce the model of NASH, animals were treated with MCD diet plus SME (0.1, 0.5 and 1 mg/kg body weight, 0.01 mL/kg) (A) 4 weeks and (B) 6 weeks period.

A



B

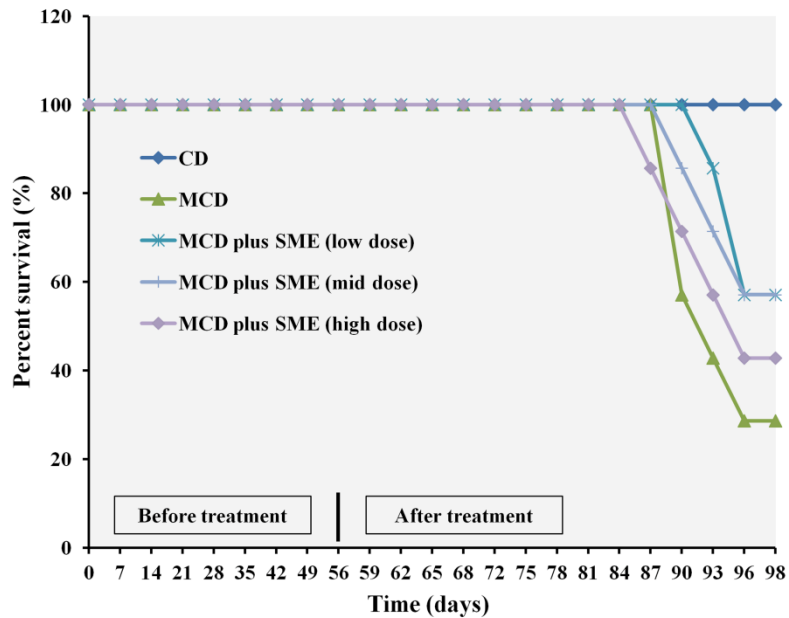


Figure 2. Stability test of cryptotanshinone, tanshinone I and tanshinone IIA SME packaged in low-density polyethylene (LDPE) bottles were stored at 40 °C/75% (Intermediate), 60 °C/75% (Accelerated) and 25 °C/60% (Long term) relative humidity (RH) for 12 weeks, respectively. (A) Cryptotanshinone, (B) Tanshinone I, (C) Tanshinone IIA

