

H1 GH-28/DMSO  
MMJABAL



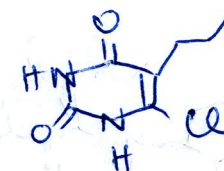
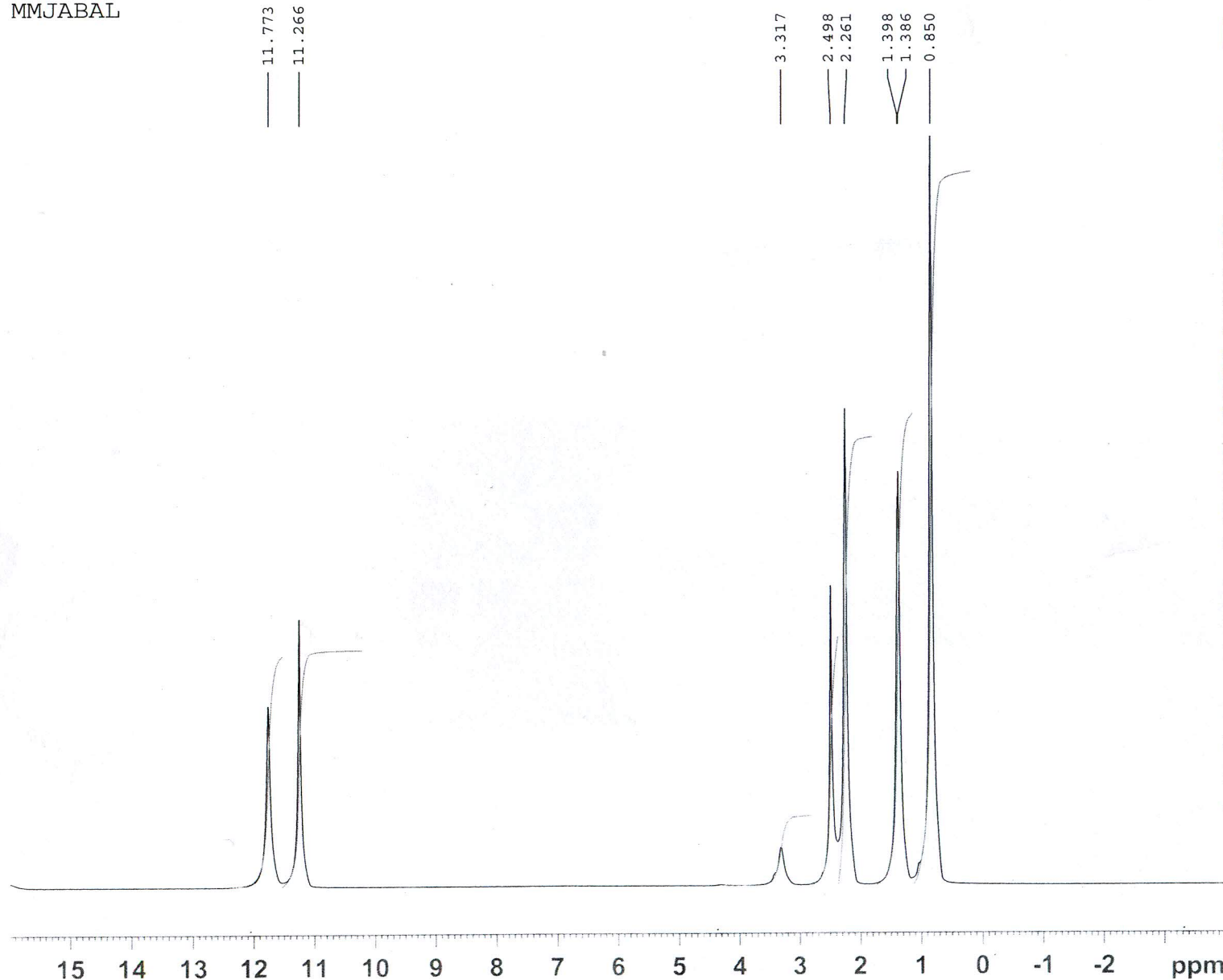
Current Data Parameters  
NAME dremam-GH-28  
EXPNO 1  
PROCNO 1

AAT-35  
GH-28/DMSO  
MMJABAL

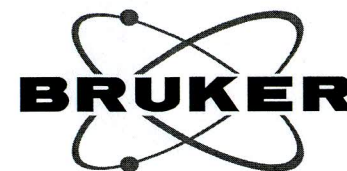
F2 - Acquisition Parameters  
Date\_ 20090521  
Time 13.21  
INSTRUM av500  
PROBHD 5 mm BBO BB-1H  
PULPROG zg30  
TD 65536  
SOLVENT DMSO  
NS 16  
DS 0  
SWH 10000.000 Hz  
FIDRES 0.152588 Hz  
AQ 3.2769001 sec  
RG 101.6  
DW 50.000 usec  
DE 6.00 usec  
TE 300.0 K  
D1 1.00000000 sec

===== CHANNEL f1 =====  
NUC1 1H  
P1 10.40 usec  
PL1 -3.00 dB  
SFO1 500.1330008 MHz

F2 - Processing parameters  
SI 32768  
SF 500.1300000 MHz  
WDW EM  
SSB 0  
LB 0.30 Hz  
GB 0  
PC 1.00



H1 GH-28/DMSO  
MMJABAL

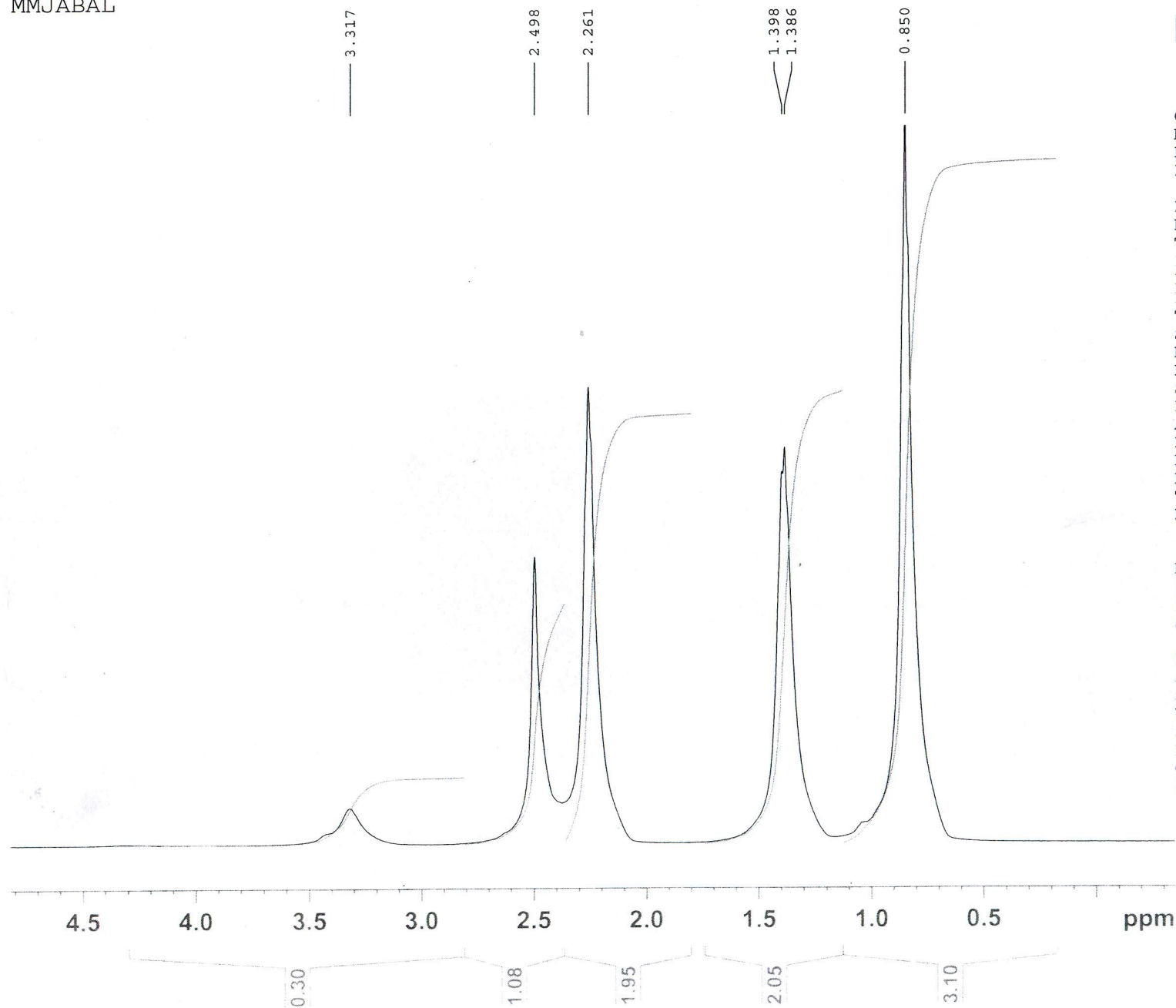


Current Data Parameters H1 GH-28/DMSO  
NAME dremam-GH-28 MMJABAL  
EXPNO 1  
PROCNO 1

F2 - Acquisition Parameters  
Date\_ 20090521  
Time\_ 13.21  
INSTRUM av500  
PROBHD 5 mm BBO BB-1H  
PULPROG zg30  
TD 65536  
SOLVENT DMSO  
NS 16  
DS 0  
SWH 10000.000 Hz  
FIDRES 0.152588 Hz  
AQ 3.2769001 sec  
RG 101.6  
DW 50.000 usec  
DE 6.00 usec  
TE 300.0 K  
D1 1.00000000 sec

===== CHANNEL f1 =====  
NUC1 1H  
P1 10.40 usec  
PL1 -3.00 dB  
SFO1 500.1330008 MHz

F2 - Processing parameters  
SI 32768  
SF 500.1300000 MHz  
WDW EM  
SSB 0  
LB 0.30 Hz  
GB 0  
PC 1.00



C13 GH-28/DMSO  
MMJABAL

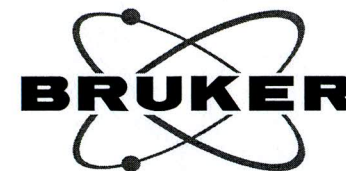
— 163.29

— 150.05

— 141.44

— 110.44

40.53  
40.37  
40.20  
40.04  
39.87  
39.70  
39.54  
27.44  
21.40  
13.96



Current Data Parameters  
NAME dremam-GH-28  
EXPNO 2  
PROCNO 1

F2 - Acquisition Parameters  
Date\_ 20090521  
Time 13.31  
INSTRUM av500  
PROBHD 5 mm BBO BB-1H  
PULPROG zgpg30  
TD 65536  
SOLVENT CDCl3  
NS 849  
DS 4  
SWH 27777.777 Hz  
FIDRES 0.423855 Hz  
AQ 1.1797160 sec  
RG 80.6  
DW 18.000 usec  
DE 6.00 usec  
TE 300.0 K  
D1 2.00000000 sec  
d11 0.03000000 sec  
d12 0.00002000 sec

===== CHANNEL f1 =====  
NUC1 13C  
P1 5.80 usec  
PL1 -2.00 dB  
SFO1 125.7703643 MHz

===== CHANNEL f2 =====  
CPDPRG2 waltz16  
NUC2 1H  
PCPD2 80.00 usec  
PL2 -3.00 dB  
PL12 15.00 dB  
PL13 15.00 dB  
SFO2 500.1320005 MHz

F2 - Processing parameters  
SI 32768  
SF 125.7577890 MHz  
WDW EM  
SSB 0  
LB 1.00 Hz  
GB 0  
PC 1.00

