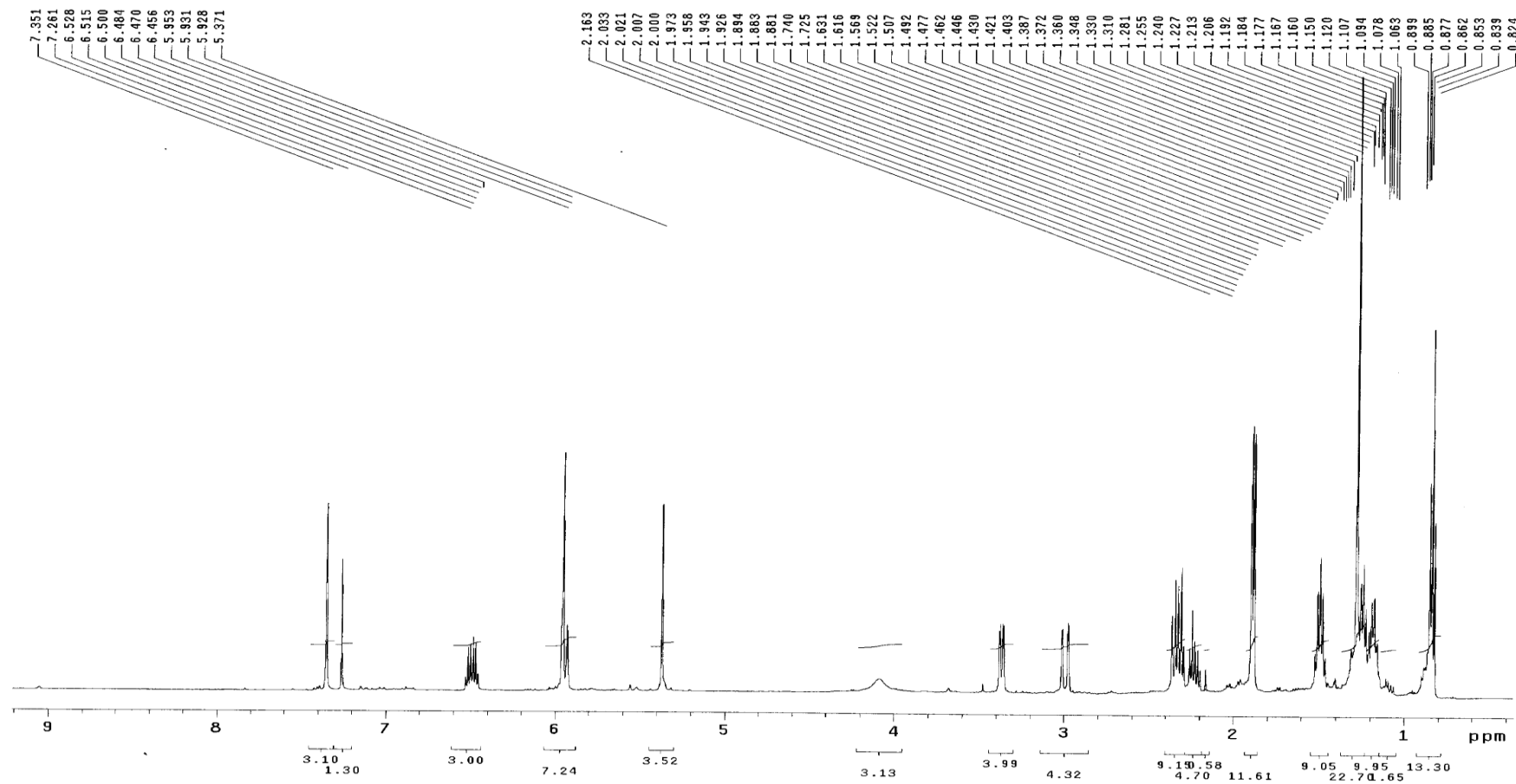


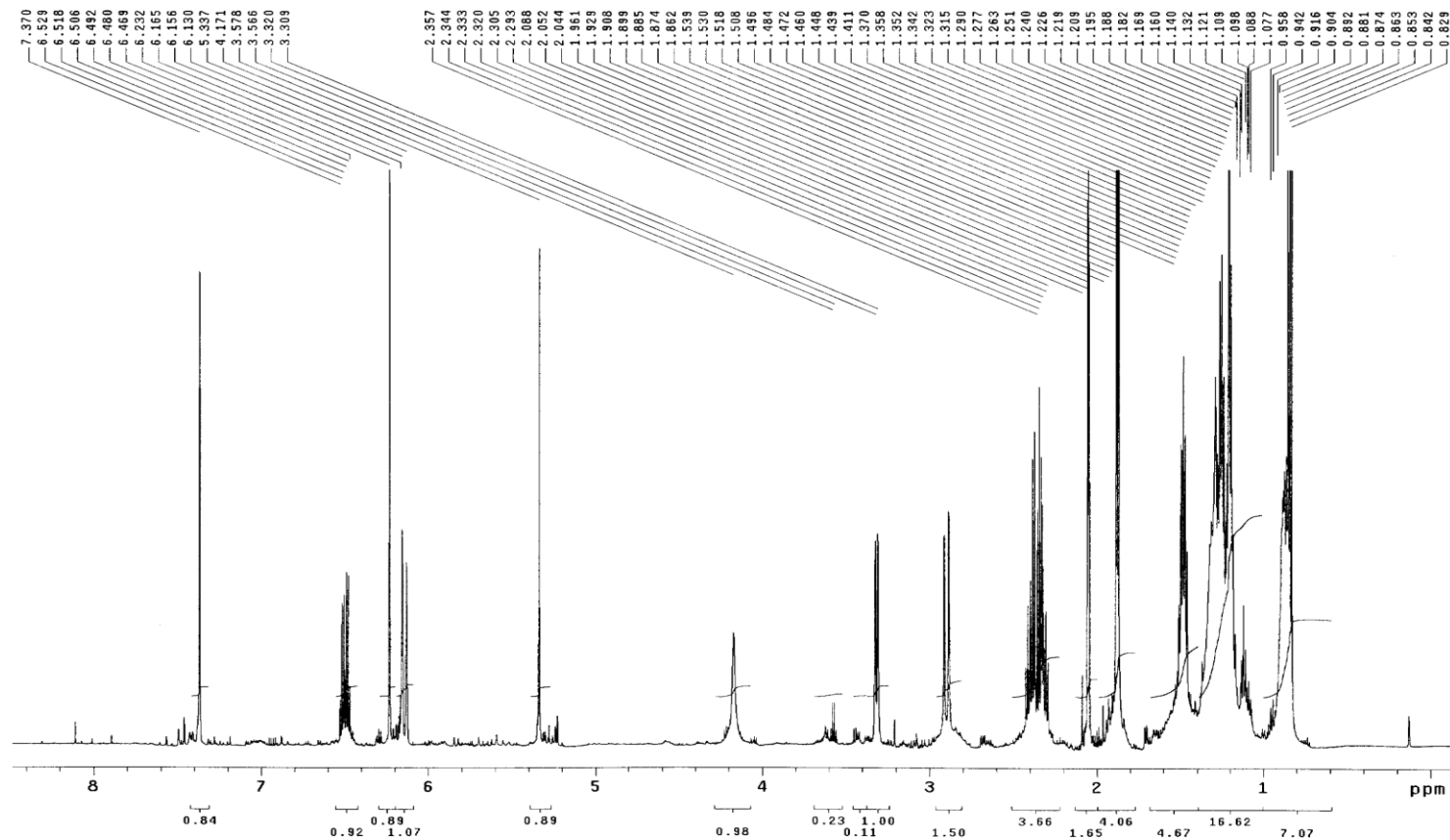
Compound 1 ¹H-NMR IN CD₃Cl₃

INOVA-501 1H-NMR hq-16 IN CDCL3 07.04.24



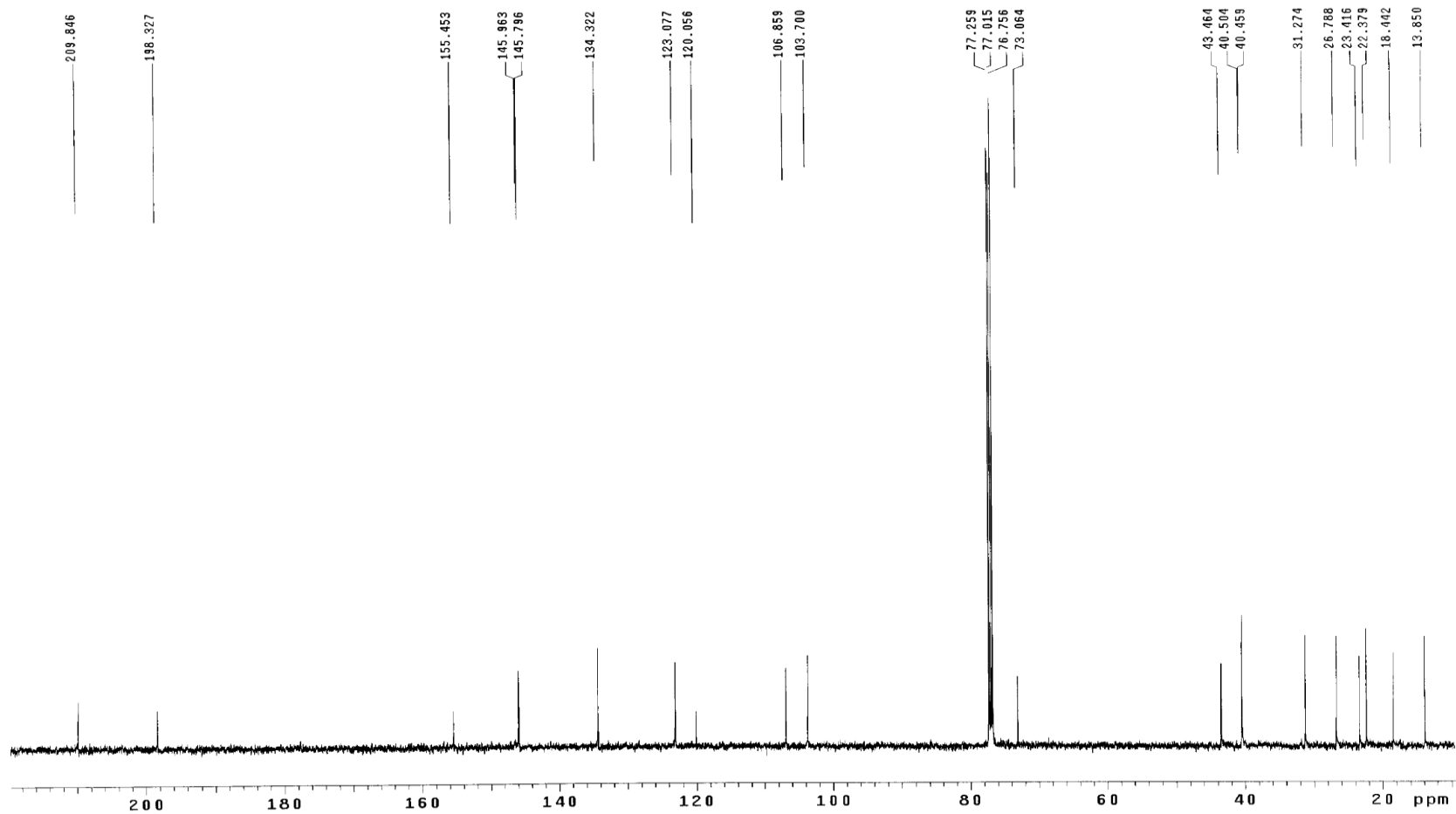
Compound 1 $^1\text{H-NMR}$ IN CD_3COCD_3

VNS-600 1H-NMR hq-16 IN CD3COCD3 08.12.24



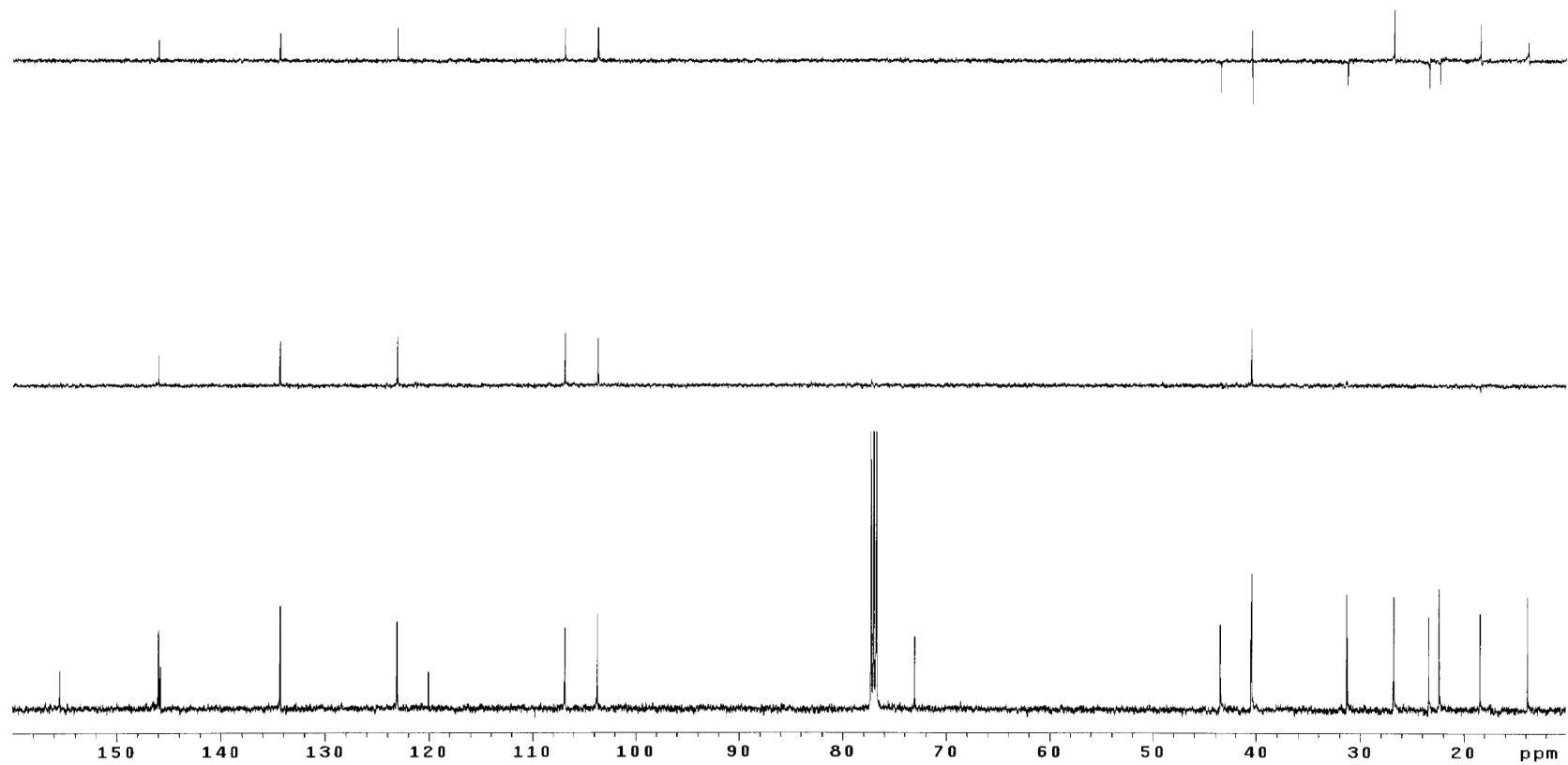
Compound 1 C-NMR IN CD₃Cl₃

INOVA-500 13C-NMR HQ-16 IN CDCL₃ 2007.04.26



Compound 1 DEPT-NMR IN CD₃Cl₃

INOVA-500 DEPT-NMR HQ-16 IN CDCL3 2007.06.27

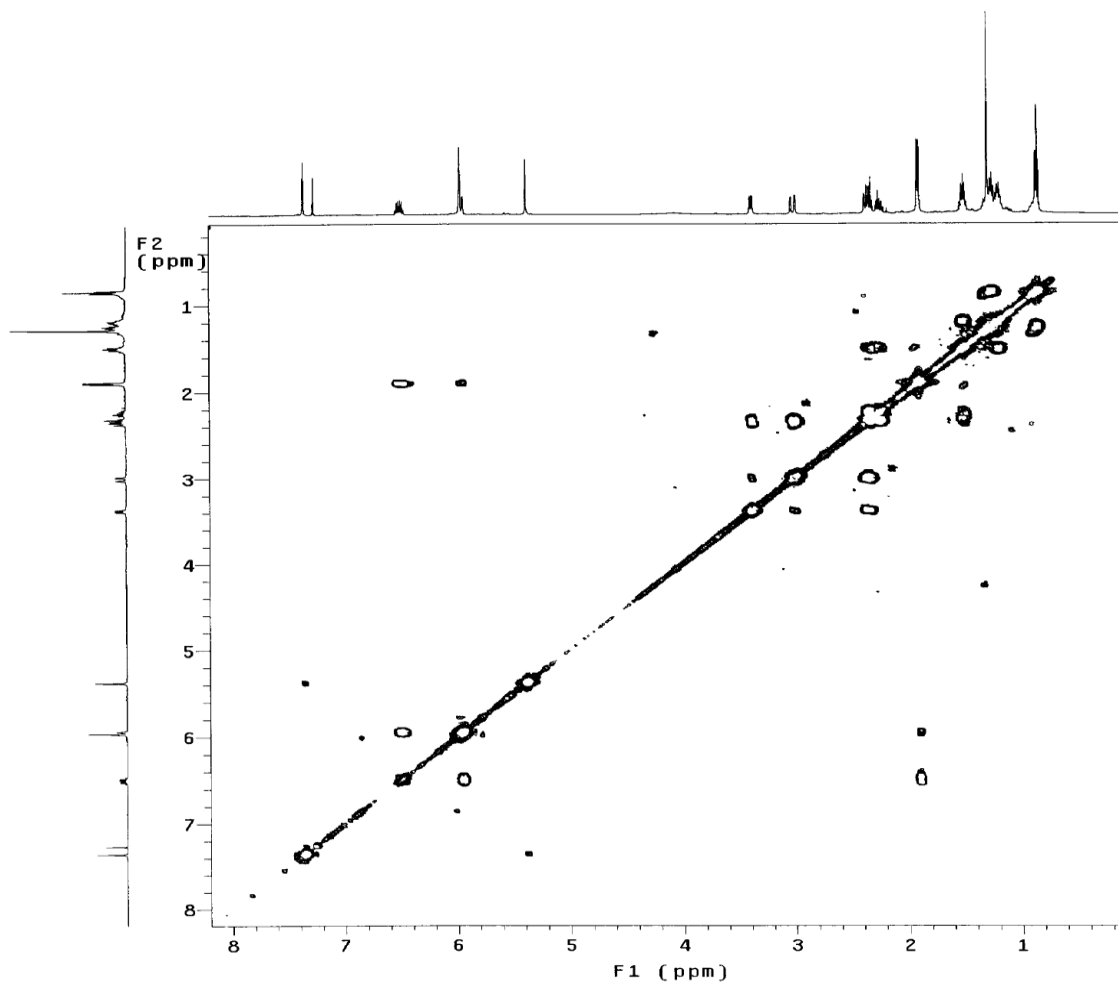


Compound 1 gCOSY IN CD₃Cl₃

INOVA-501 gCOSY HQ-16 IN CDCL₃ 07.05.21

Solvent: CDCl₃
Temp. 25.0 C / 298.1 K
INOVA-500 "IMM-501"

Relax. delay 1.000 sec
Acq. time 0.126 sec
Width 4070.6 Hz
2D Width 4070.6 Hz
2 repetitions
256 increments
OBSERVE H1, 499.7702080 MHz
DATA PROCESSING
Sine bell 0.063 sec
F1 DATA PROCESSING
Sine bell 0.031 sec
FT size 1024 x 1024
Total time 10 min, 17 sec

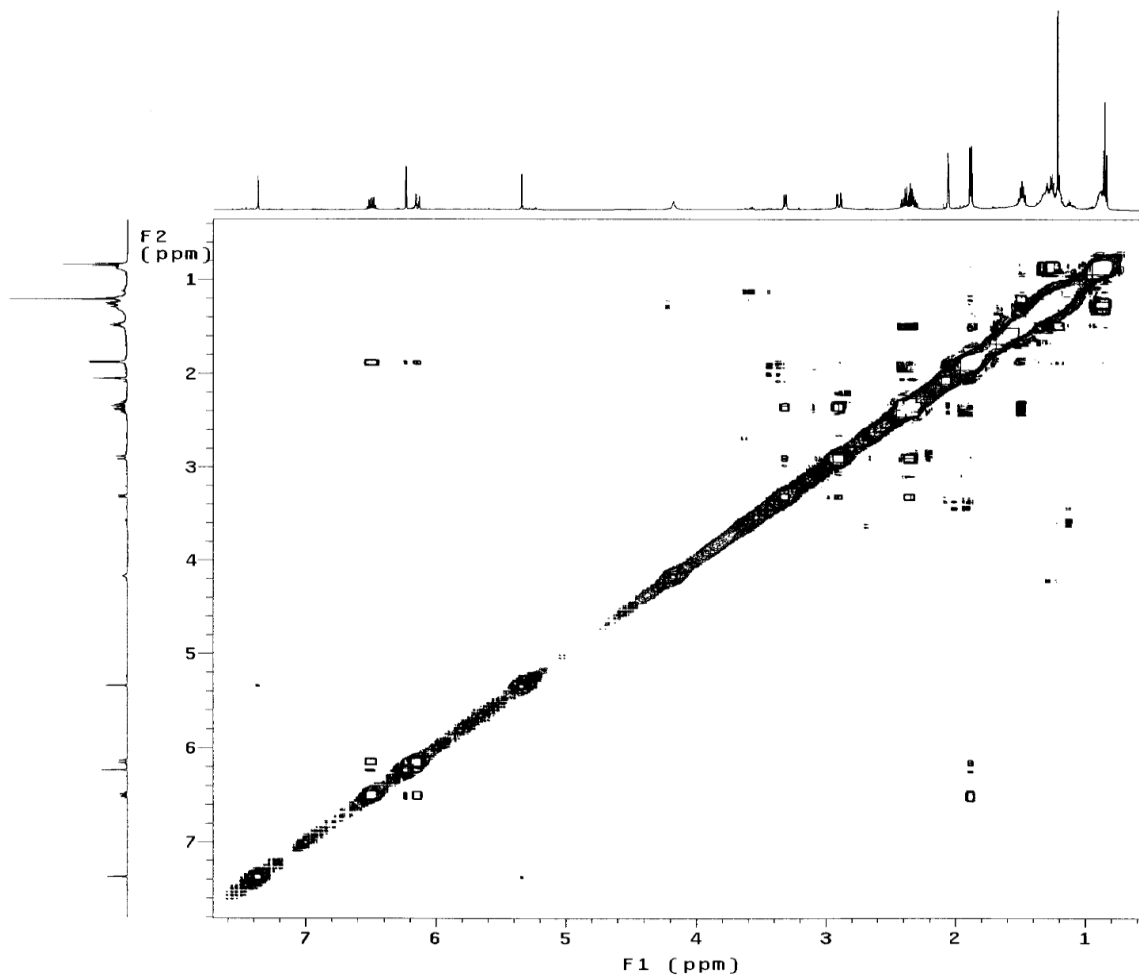


Compound 1 gCOSY IN CD₃COCD

VNS-600 gCOSY hq-16 IN CD₃COCD₃ 08.12.24

Solvent: acetone
Ambient temperature
Operator: vnmr2
VNMR-600 "wormhole"

Relax. delay 1.301 sec
Acq. time 0.205 sec
Width 10000.0 Hz
2D Width 10000.0 Hz
2 repetitions
256 increments
OBSERVE H1, 599.6981281 MHz
DATA PROCESSING
Sine bell 0.099 sec
F1 DATA PROCESSING
Sine bell 0.009 sec
F1 size 4096 x 4096
Total time 13 min, 28 sec

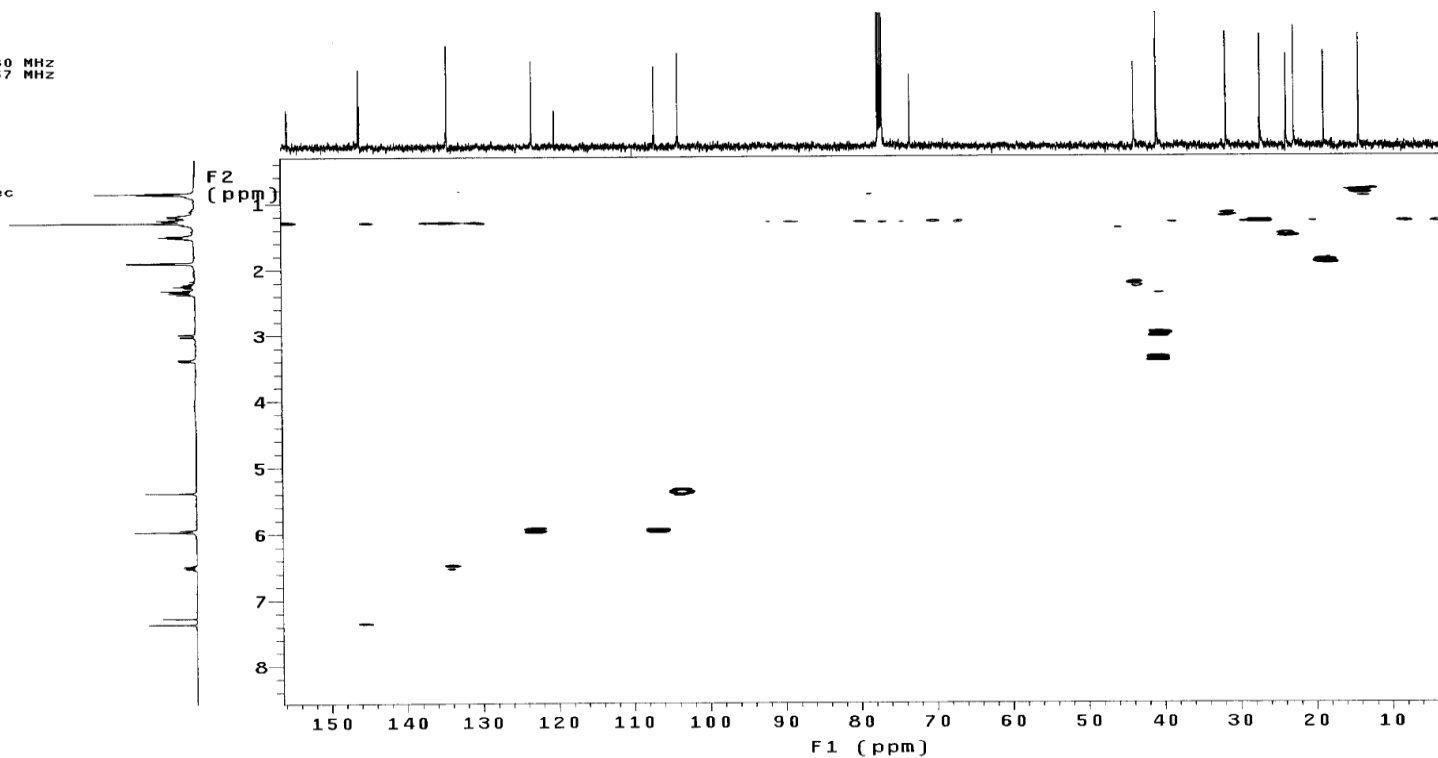


Compound 1 gHMQC IN CD₃Cl₃

INOVA-501 1H-NMR HQ-16 IN CDCL3 07.05.21

Solvent: CDC13
Temp. 25.0 C / 298.1 K
User: 1-14-87
INOVA-500 "IMM-501"

Relax. delay 1.000 sec
Acq. time 0.213 sec
Width 4797.6 Hz
2D Width 21175.2 Hz
16 repetitions
160 increments
OBSERVE H1, 499.7702080 MHz
DECOUPLE C13, 125.6780857 MHz
Power 48 dB
on during acquisition
off during delay
GARP-1 modulated
DATA PROCESSING
Sine bell 0.042 sec
F1 DATA PROCESSING
Sine bell 0.004 sec
FT size 2048 x 4096
Total time 55 min, 32 sec

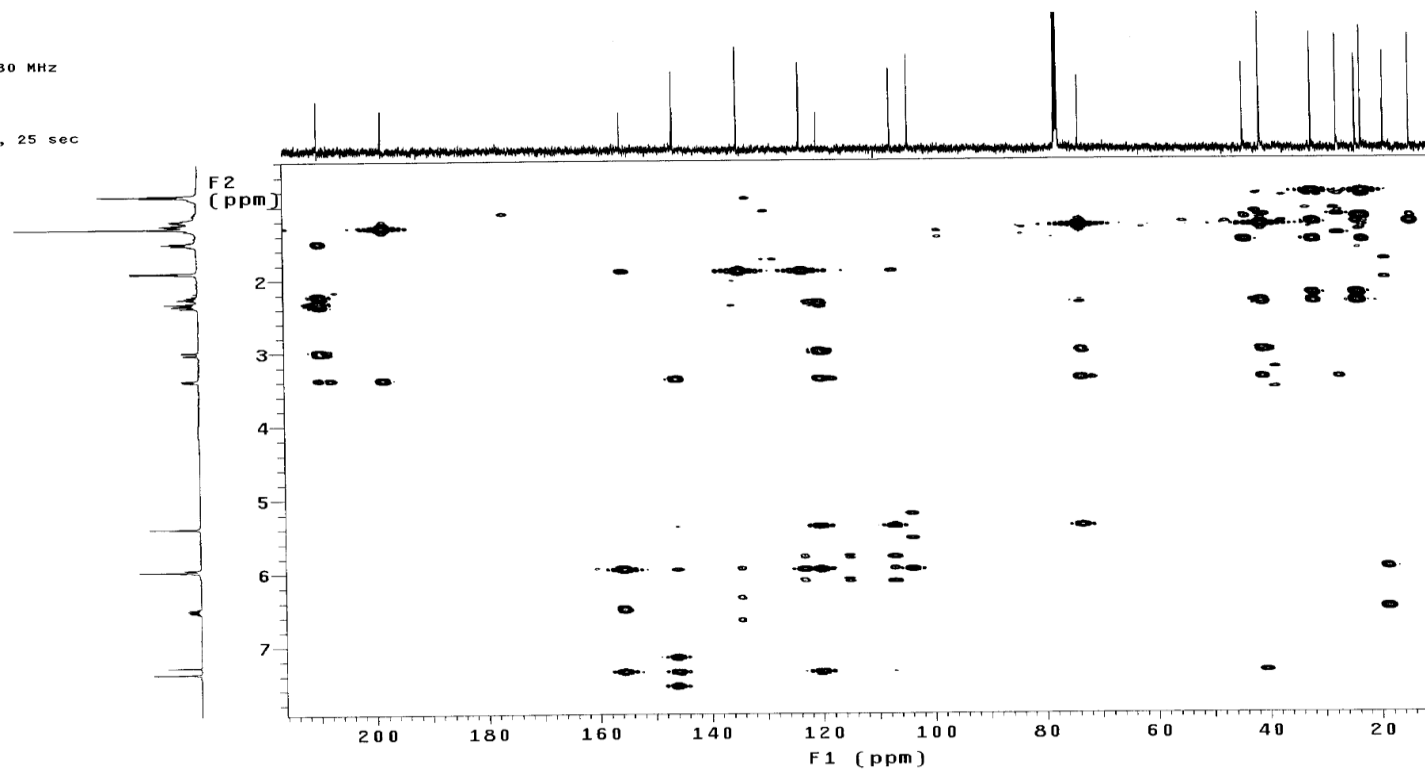


Compound 1 gHMBC IN CD₃Cl₃

INOVA-501 gHMBC HQ-16 IN CDCL3 07.05.21

Solvent: CDCl₃
Temp. 25.0 C / 298.1 K
User: 1-14-87
INOVA-500 "IMM-501"

Relax. delay 1.000 sec
Acq. time 0.219 sec
Width 4668.8 Hz
2D Width 26411.4 Hz
24 repetitions
256 increments
OBSERVE H1, 499.7702080 MHz
DATA PROCESSING
Sine bell 0.049 sec
F1 DATA PROCESSING
Sine bell 0.004 sec
FT size 2048 x 4096
Total time 2 hr, 14 min, 25 sec

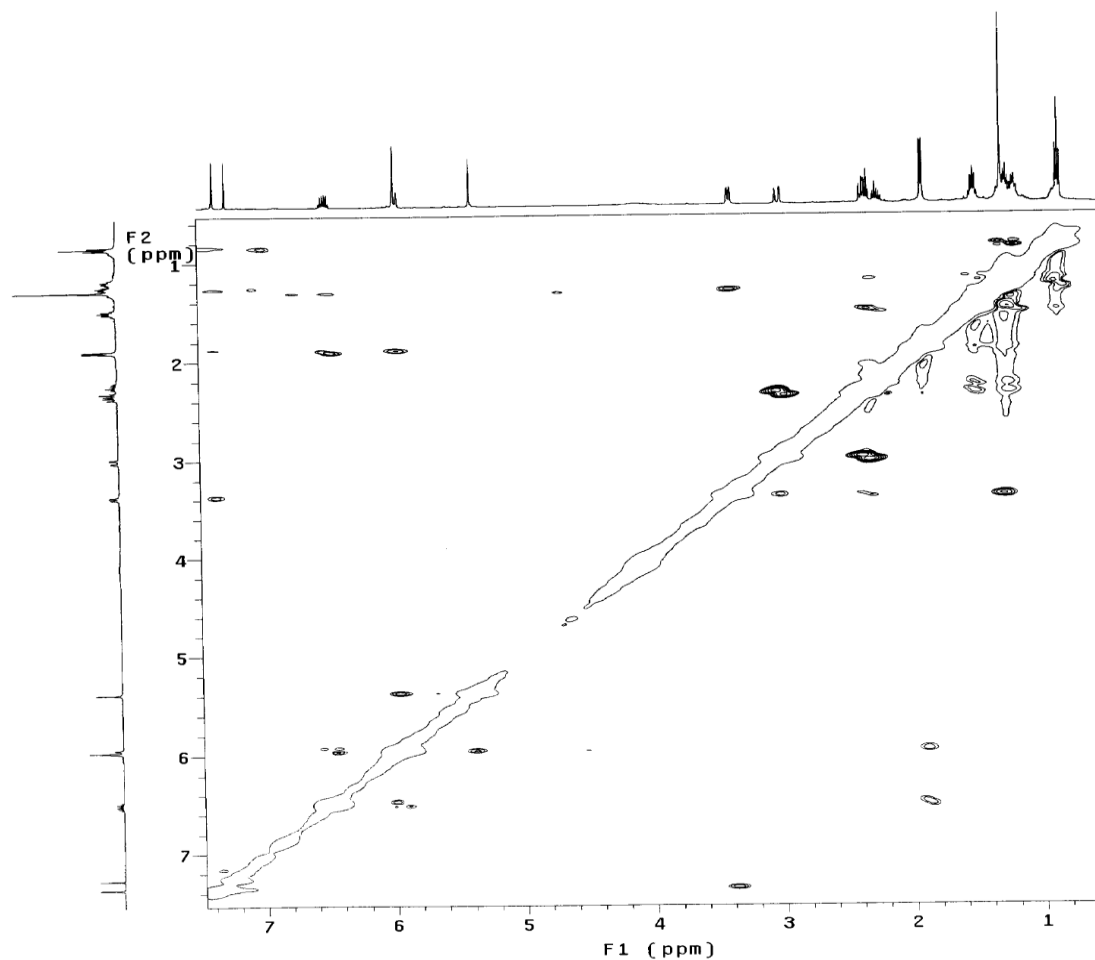


Compound 1 NOESY IN CD₃Cl₃

INOVA-501 NOESY HQ-16 IN CDCL3 07.07.04

Solvent: CDC13
Temp. 25.0 C / 298.1 K
INOVA-500 "IMM-501"

Relax. delay 1.600 sec
Mixing 0.800 sec
Acq. time 0.132 sec
Width 3887.5 Hz
2D Width 3887.5 Hz
8 repetitions
2 x 200 increments
OBSERVE H1, 499.7702083 MHz
DATA PROCESSING
Gauss apodization 0.031 sec
F1 DATA PROCESSING
Gauss apodization 0.008 sec
FT size 2048 x 2048
Total time 2 hr, 18 min, 28 sec

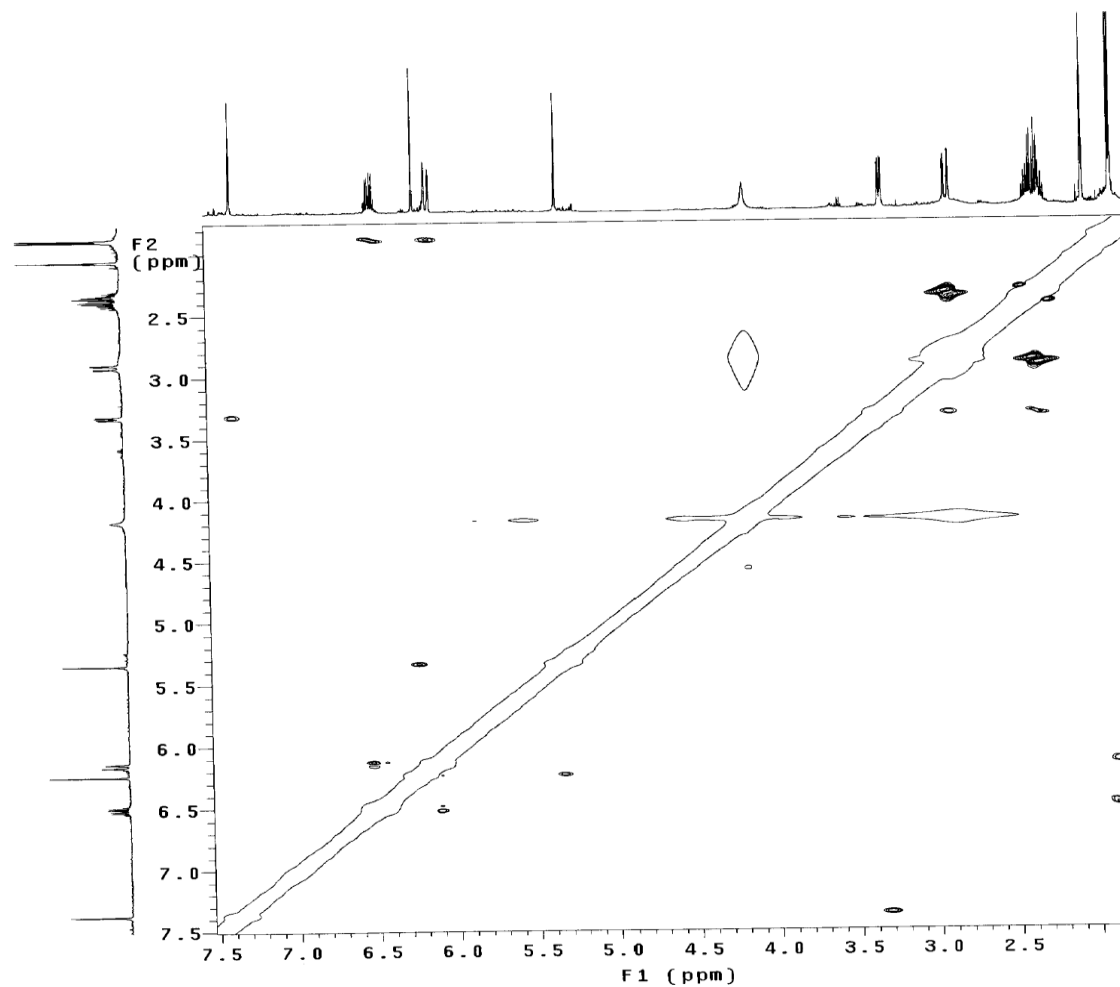


Compound 1 NOESY IN CD₃COCD₃

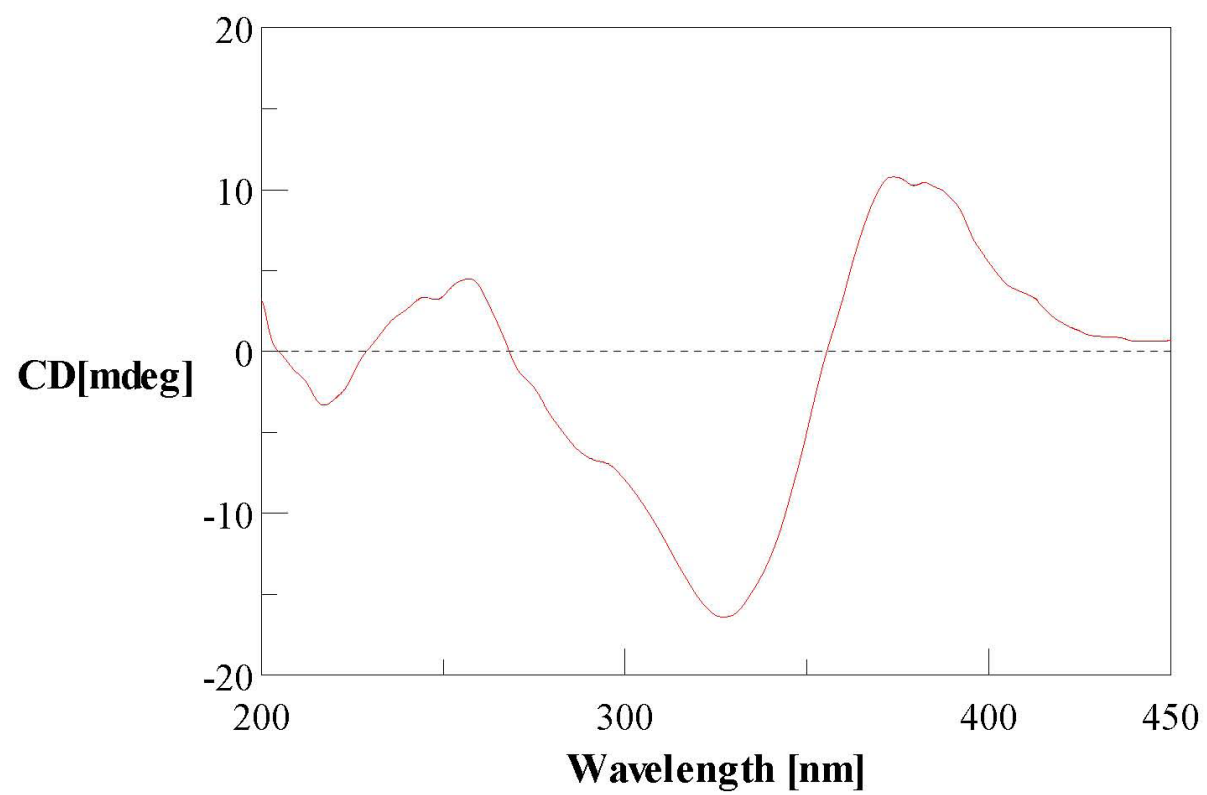
VNS-600 NOESY hq-16 IN CD3C0CD3 08.12.24

Solvent: acetone
Ambient temperature
Operator: vnmr2
VNMRS-600 "wormhole"

Relax. delay 1.200 sec
Mixing 0.600 sec
Acq. time 0.197 sec
Width 5186.7 Hz
2D Width 5186.7 Hz
16 repetitions
2 x 200 increments
OBSERVE H1, 599.6981281 MHz
DATA PROCESSING
Gauss apodization 0.034 sec
F1 DATA PROCESSING
Gauss apodization 0.010 sec
FT size 4096 x 4096
Total time 3 hr, 38 min, 3 sec

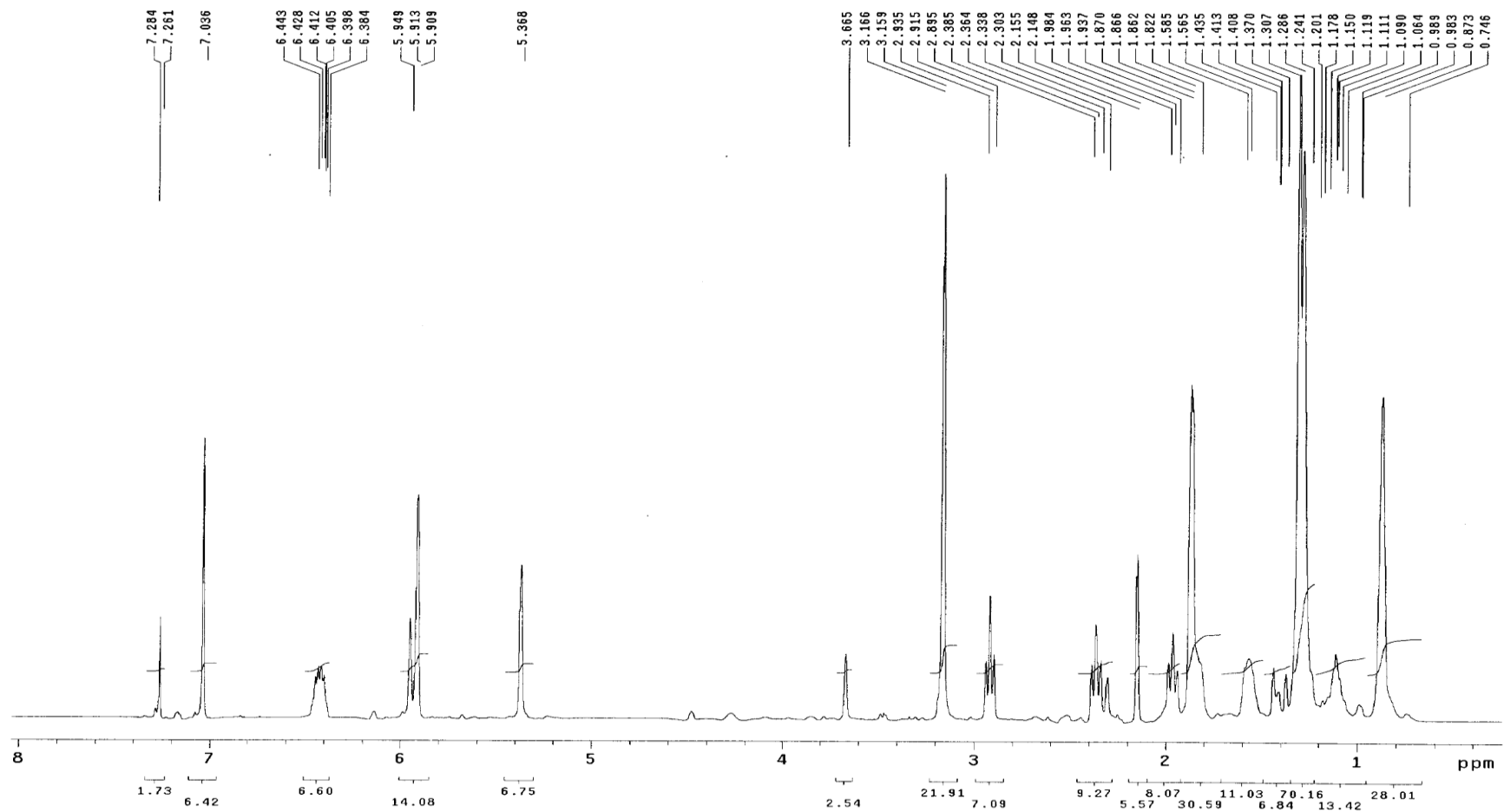


Compound 1 CD



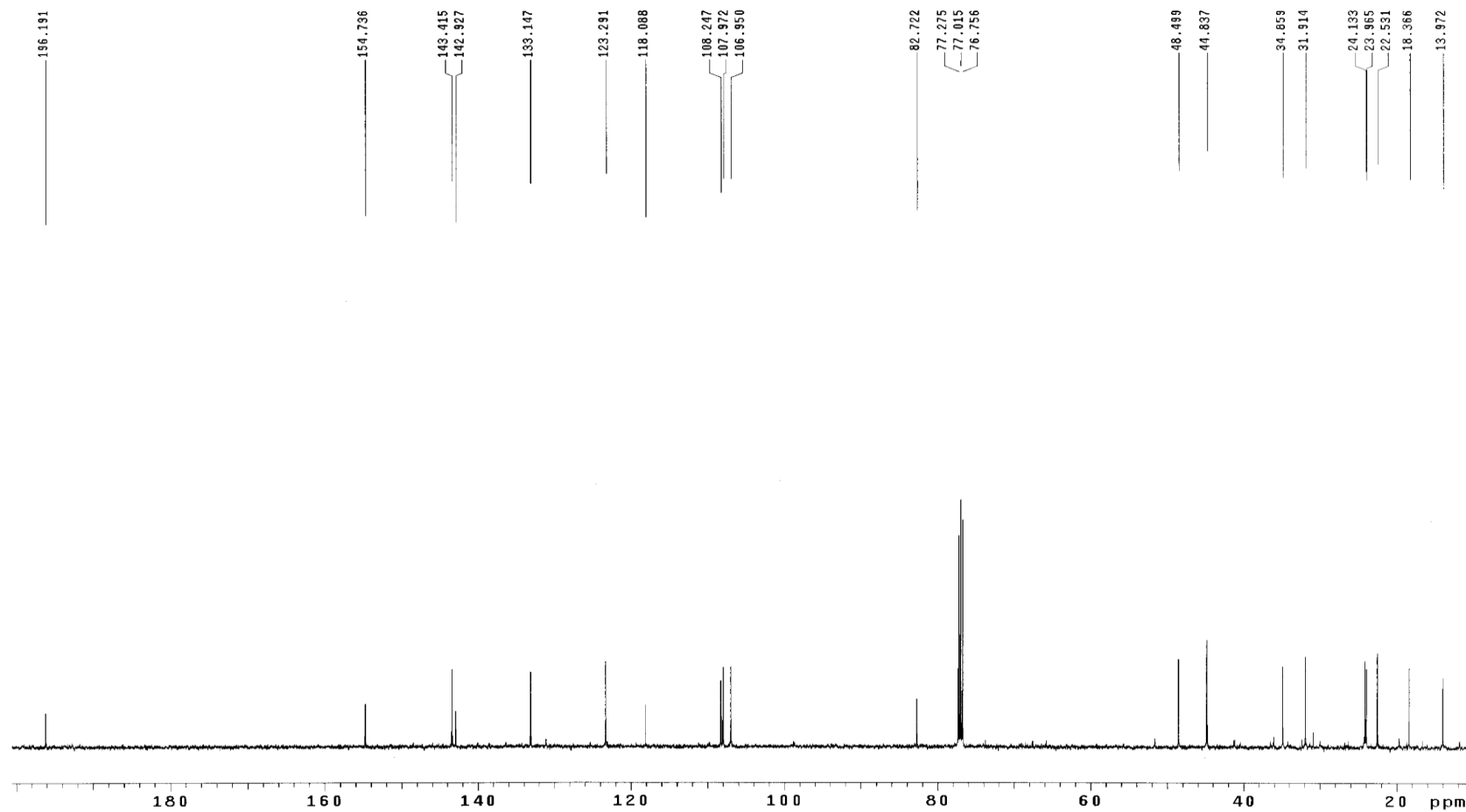
Compound 2 ¹H-NMR IN CD₃Cl₃

INOVA-501 1H-NMR hq-13 IN CDCL3 07.04.24



Compound 2 C-NMR IN CD₃Cl₃

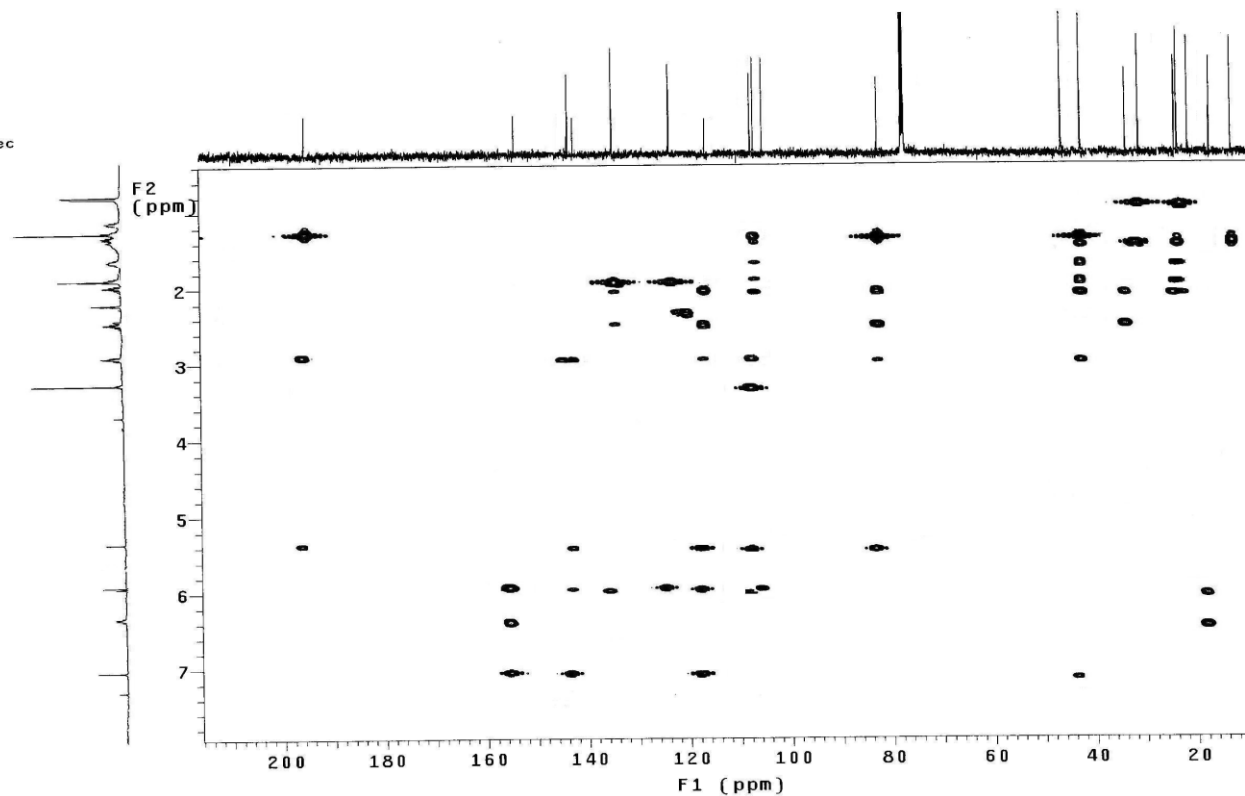
INOVA-500 13C-NMR HQ-13 IN CDCL3 2007.04.26



Compound 2 gHMBC IN CD₃Cl₃

INOVA-501 gHMBC HQ-13 IN CDCL3 07.05.21

Solvent: CDCl₃
Temp. 25.0 C / 298.1 K
User: 1-14-87
INOVA-500 "IMM-501"
Relax. delay 1.000 sec
Acq. time 0.219 sec
Width 4668.8 Hz
2D Width 26411.4 Hz
24 repetitions
256 increments
OBSERVE H1, 499.7702080 MHz
DATA PROCESSING
Sine bell 0.049 sec
F1 DATA PROCESSING
Sine bell 0.004 sec
FT size 2048 x 4096
Total time 2 hr, 14 min, 25 sec



Compound 2 **NOESY** **IN CD₃Cl₃**

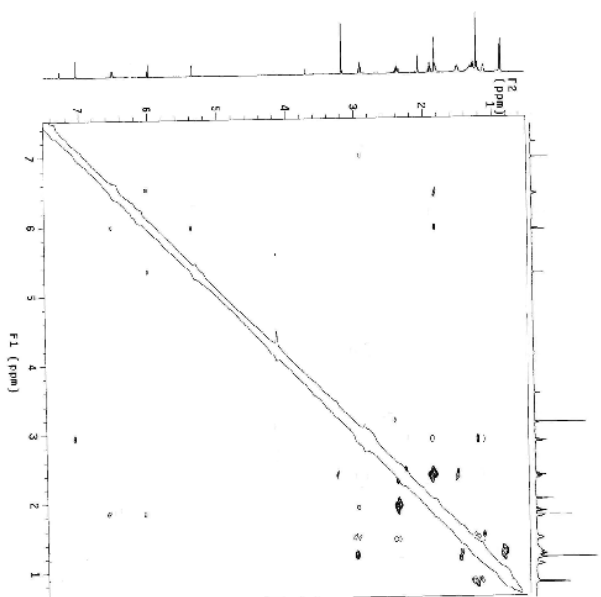
WMS-601 MOESY In-13

```

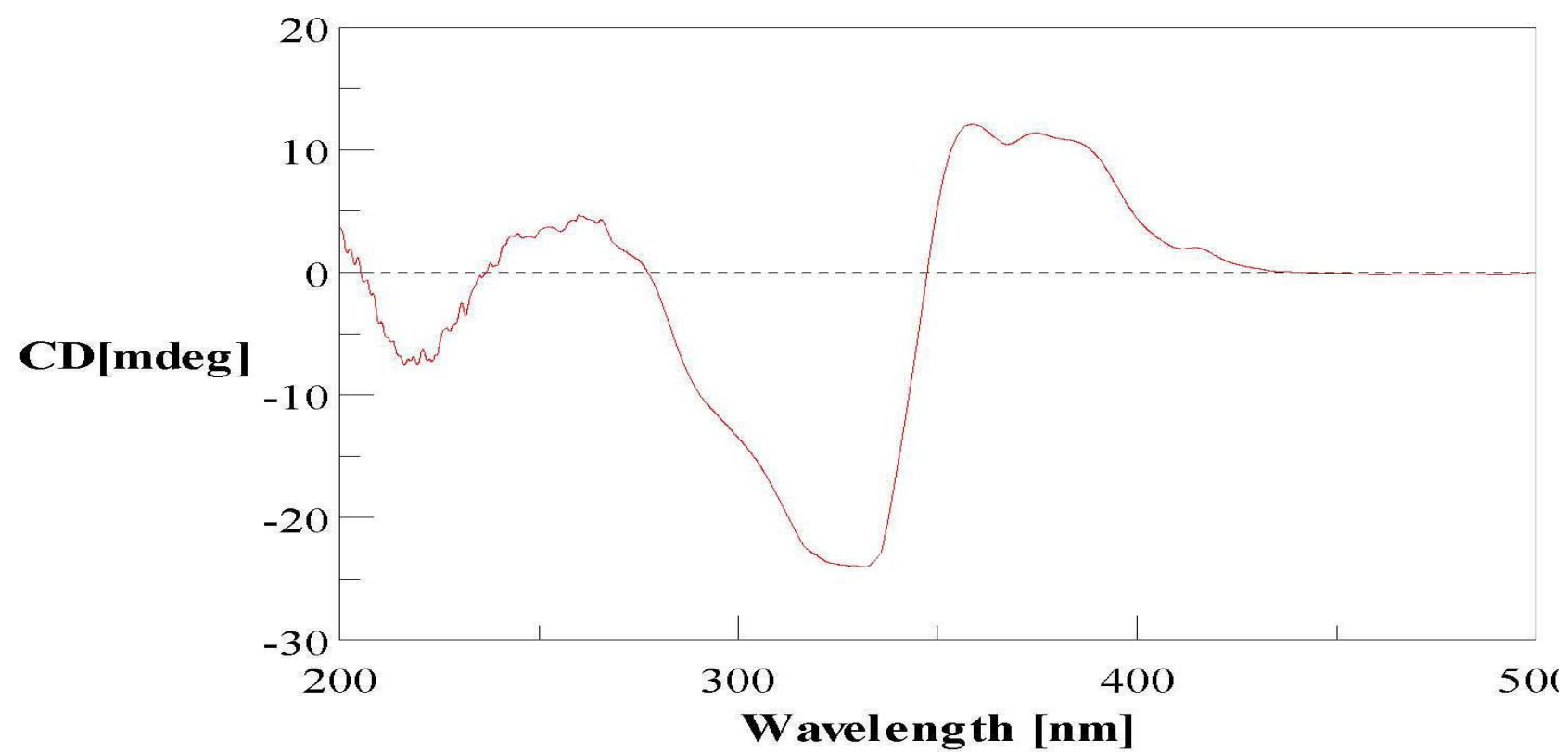
Application: beamstruts
Operator: vince
VMSR500  "NOI=NOI2"

Rising: 5000 1:500 sec
Mixing: 1:000 3:300 sec
Washing: 5000 5:000 sec
Wash: 5000 5:000 sec
20 Wdth: 5000 7 Hz
16 Repetitions:
2 X 8000 Inductors
1:0000 Inductors
1:0000 Inductors
Cover: approximation 0.150 sec
DATA PROCESSING: 0.150 sec
F1 DATA PROCESSING: 0.110 sec
F2 DATA PROCESSING: 0.090 sec
Total time: 5 hr. 39 min. 3 sec

```

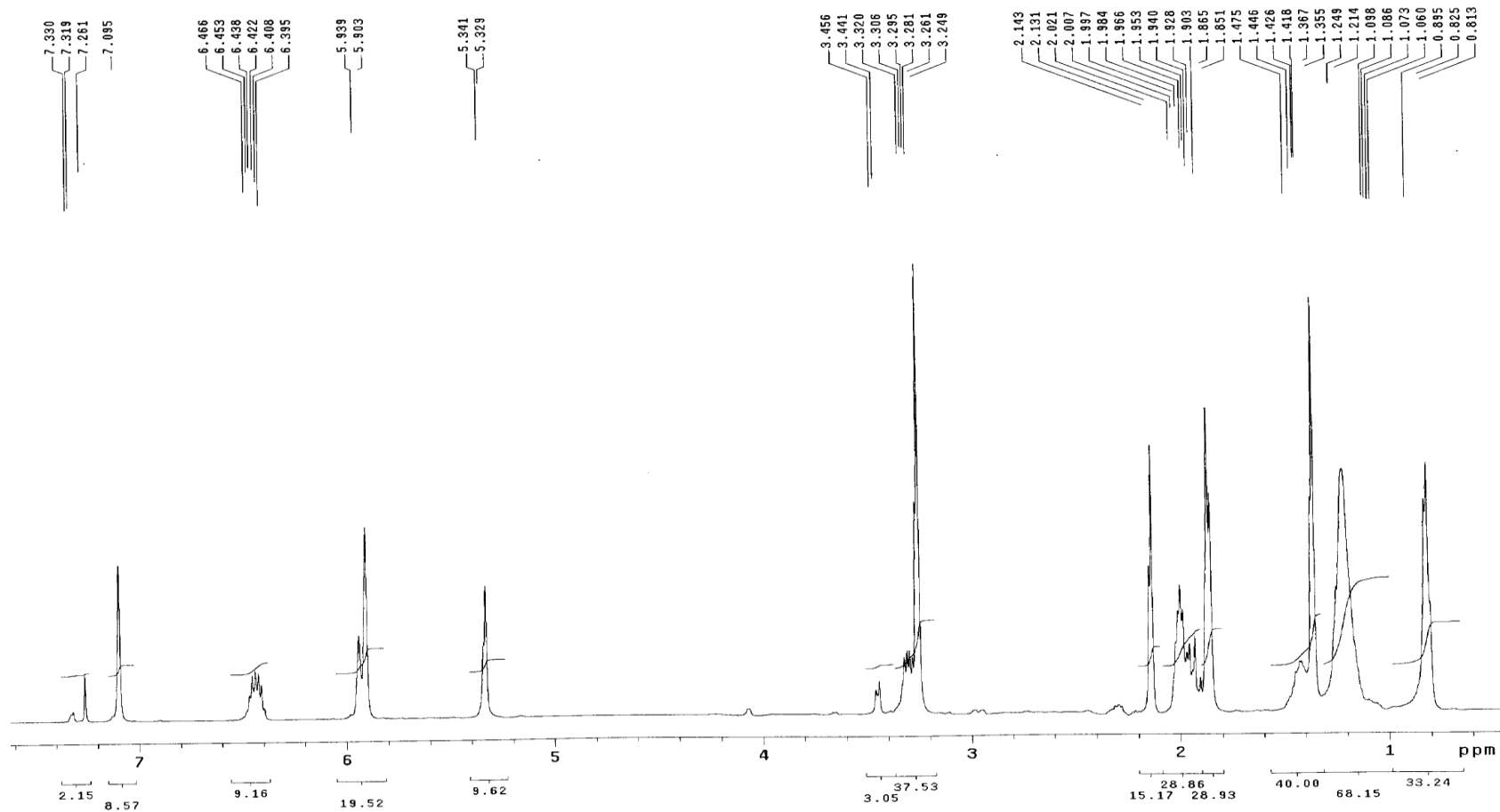


Compound 2 CD



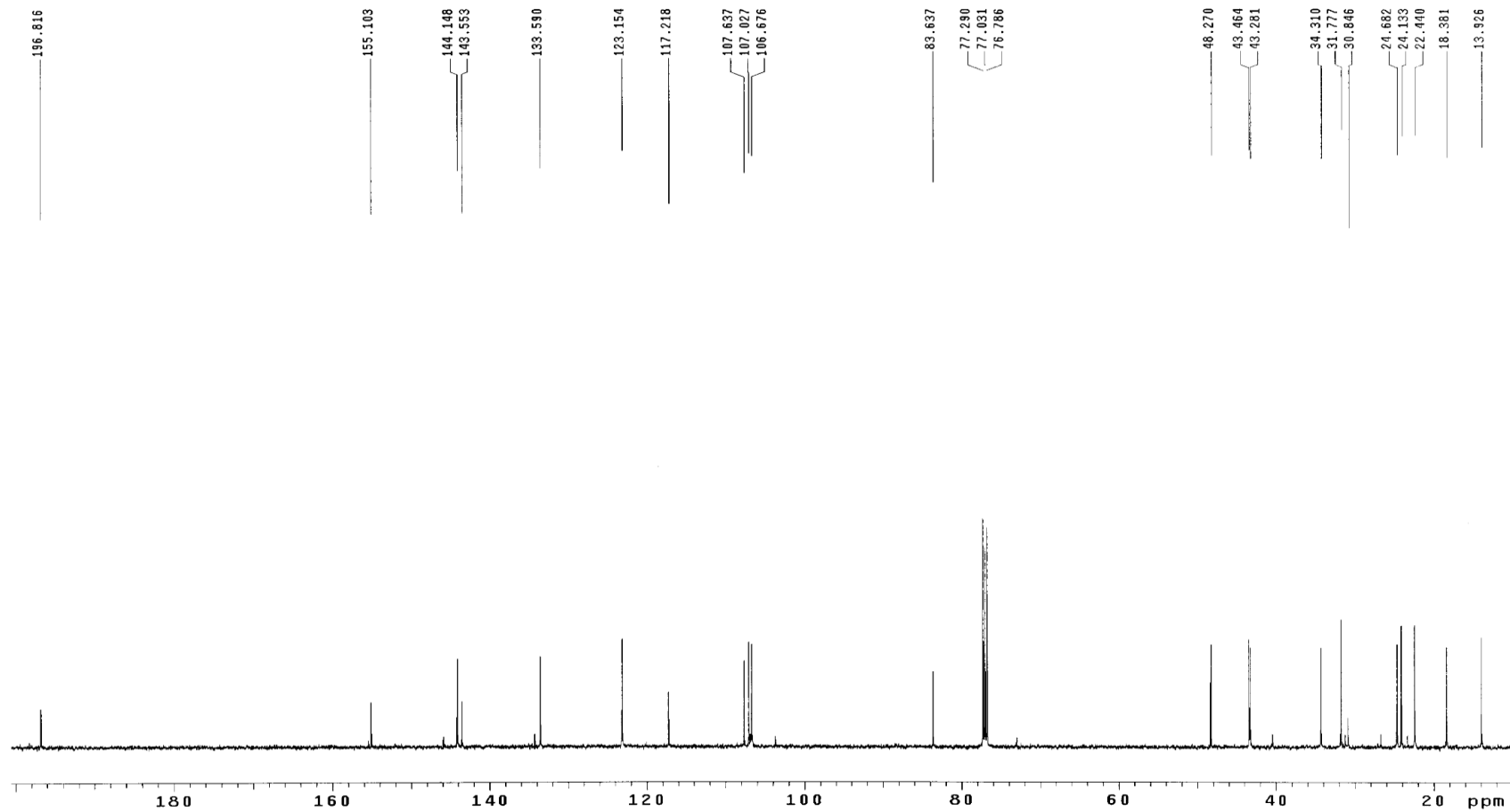
Compound 3 ¹H-NMR IN CD₃Cl₃

INOVA-501 1H-NMR hq-1 IN CDCL₃ 07.04.24



Compound 3 C-NMR IN CD₃Cl₃

INOVA-500 13C-NMR HQ-14 IN CDCL3 2007.04.26

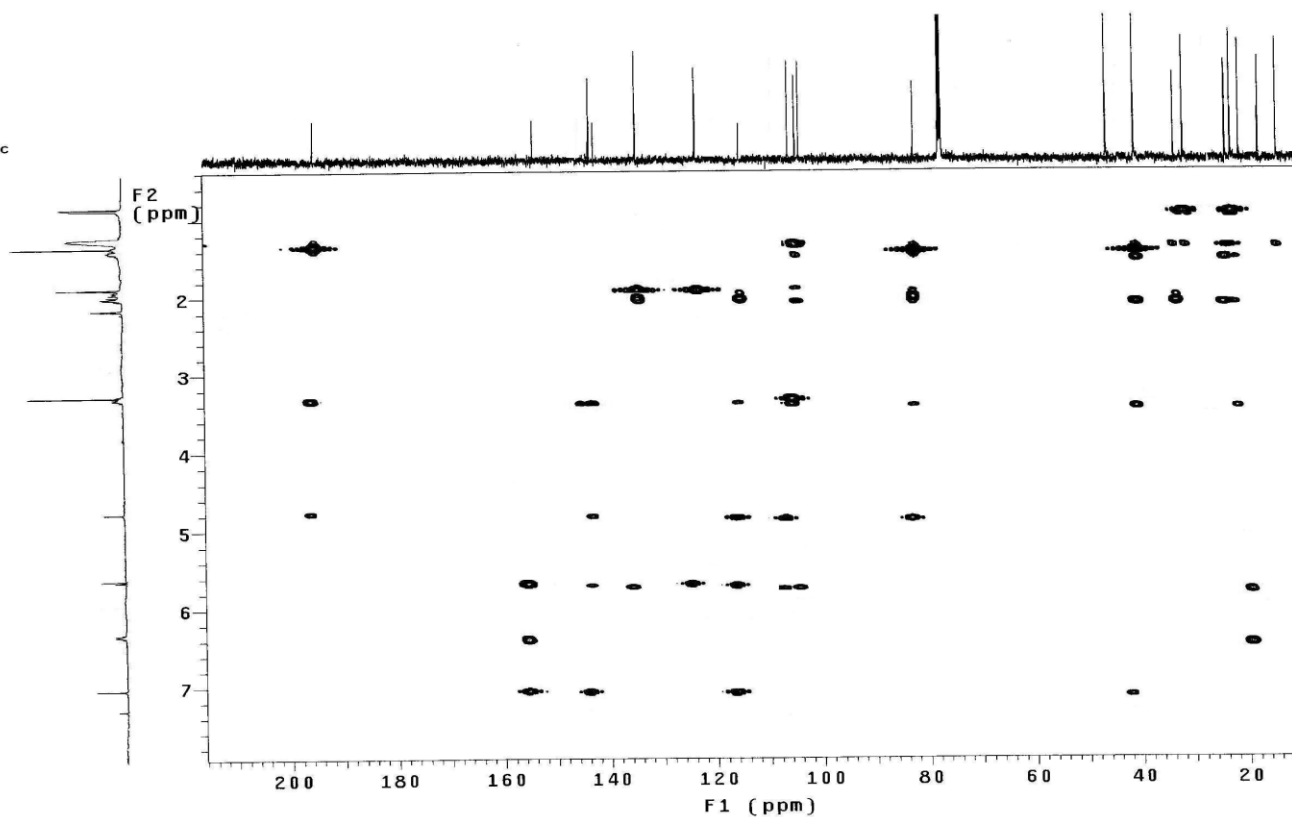


Compound 3 gHMBC IN CD₃Cl₃

INOVA-501 gHMBC HQ-14 IN CDCL3 07.05.21

Solvent: CDCl₃
Temp. 25.0 C / 298.1 K
User: 1-14-87
INOVA-500 "IMM-501"

Relax. delay 1.000 sec
Acq. time 0.219 sec
Width 4668.8 Hz
2D Width 26411.4 Hz
24 repetitions
256 increments
OBSERVE H1, 499.7702080 MHz
DATA PROCESSING
Sine bell 0.049 sec
F1 DATA PROCESSING
Sine bell 0.004 sec
FT size 2048 X 4096
Total time 2 hr, 14 min, 25 sec

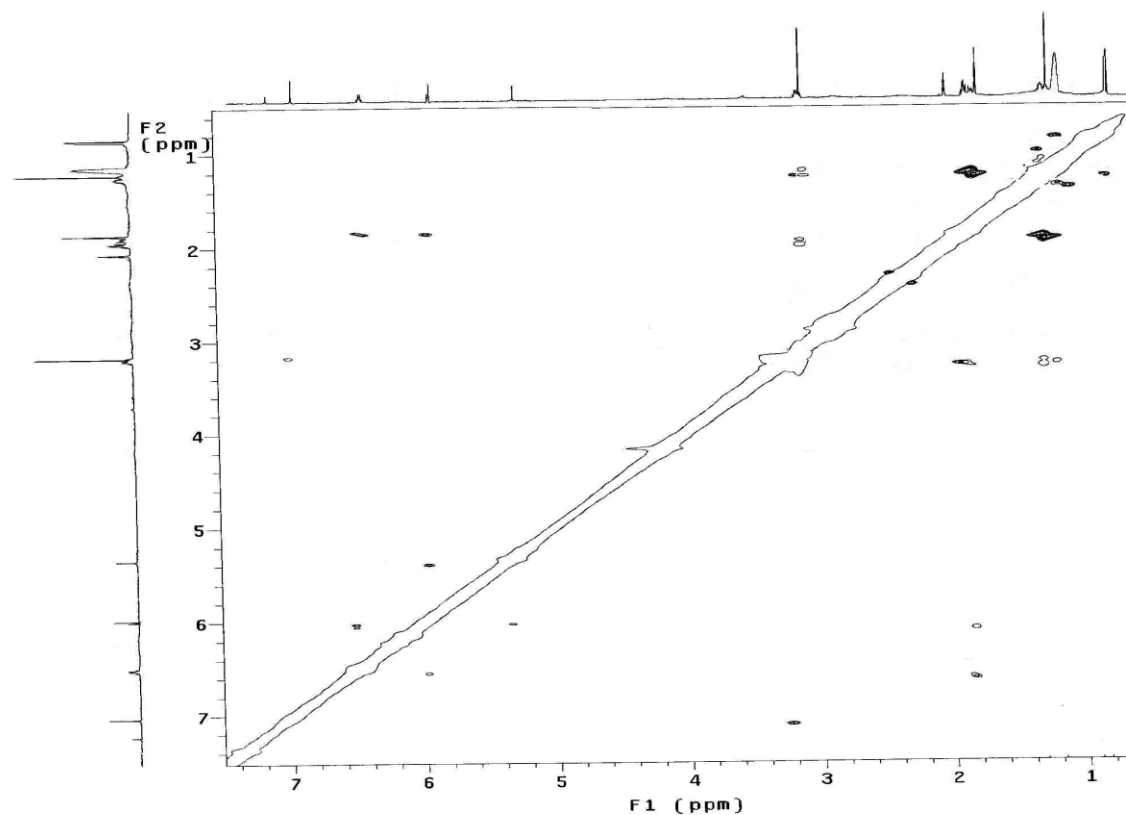


Compound 3 NOESY IN CD₃Cl₃

VNS-600 NOESY hq-14

Ambient temperature
Operator: vnmr2
VNMRS-600 "wormhole"

Relax. delay 1.200 sec
Mixing 0.600 sec
Acq. time 0.197 sec
Width 5186.7 Hz
2D Width 5186.7 Hz
16 repetitions
2 x 200 increments
OBSERVE H1, 599.6981281 MHz
DATA PROCESSING
Gauss apodization 0.034 sec
F1 DATA PROCESSING
Gauss apodization 0.010 sec
FT size 4096 x 4096
Total time 3 hr, 38 min, 3 sec



Compound 3 CD IN CD_3Cl_3

