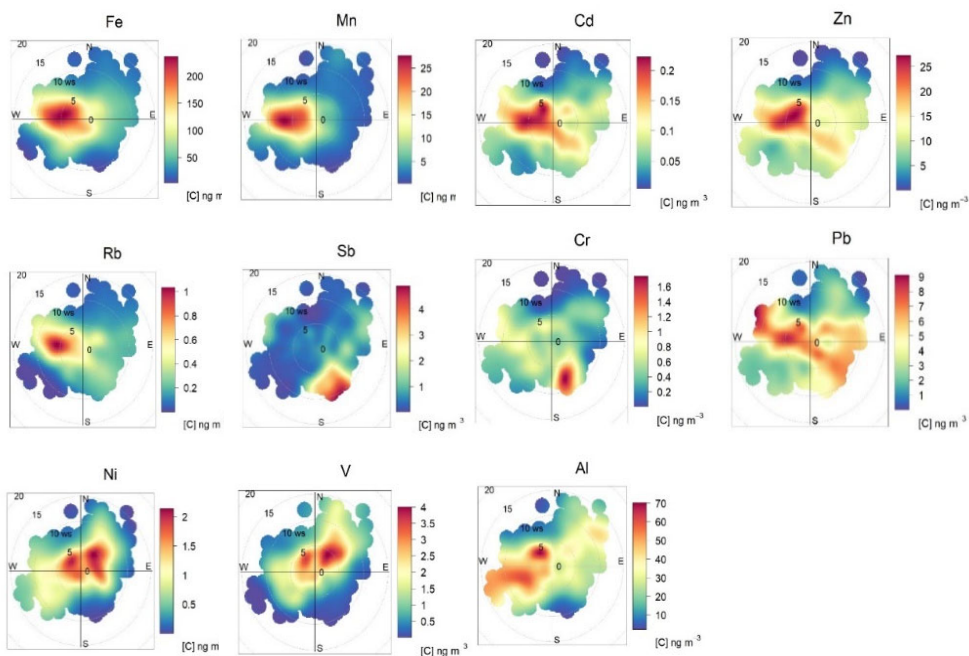


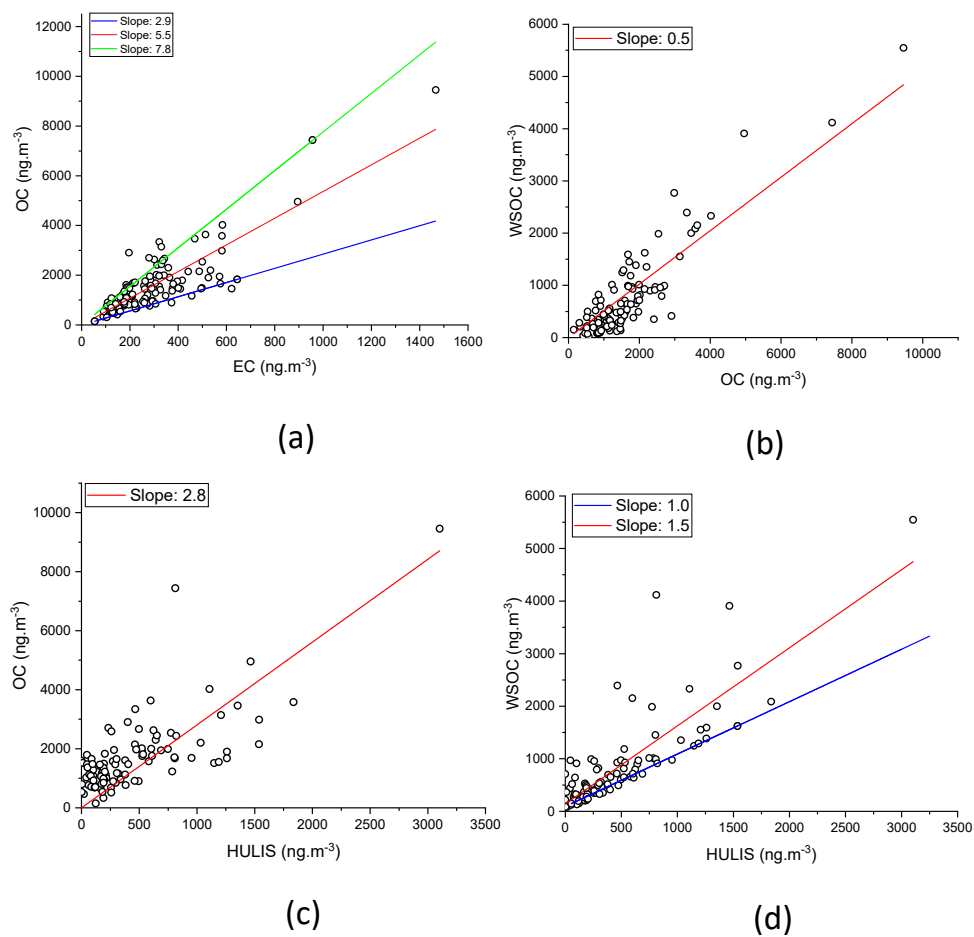
**Figure S1.** Correlations between PM<sub>2.5</sub> reconstructed by mass closure and PM<sub>2.5</sub> measured (expressed in ng.m<sup>-3</sup>).



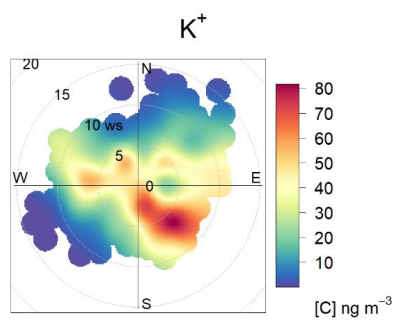
**Figure S2.** Bivariate polar plots of elemental concentration at Dunkerque during sampling period.



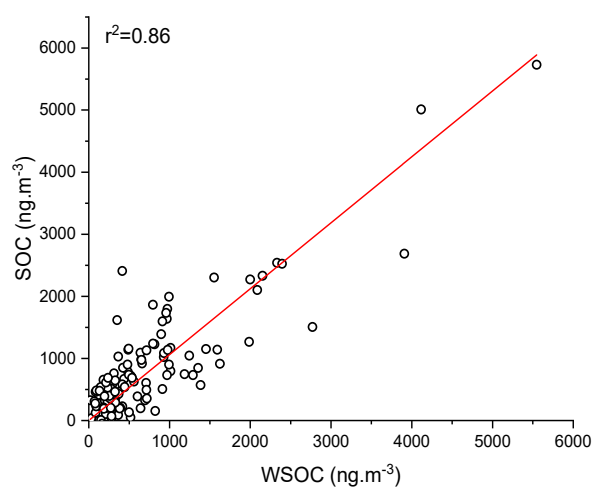
**Figure S3.** Windrose representation for the selection of sampling days that were influenced by industrial emissions (samples collected under the 250-320° wind sector).



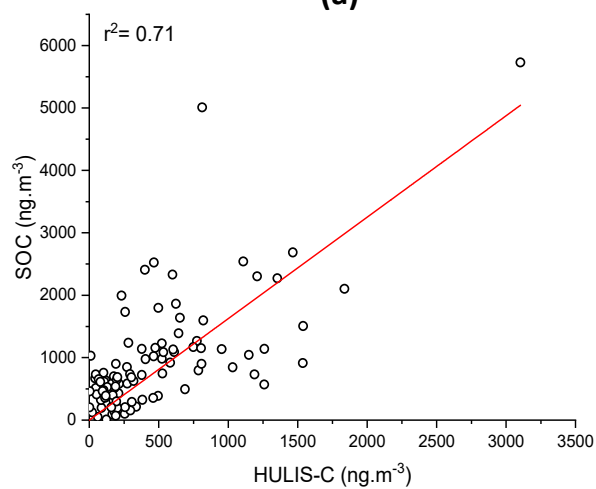
**Figure S4.** Correlations between the concentrations of (a) OC and EC, (b) WSOC and OC, (c) OC and HULIS-C and (d) WSOC and HULIS-C.



**Figure S5.** Bivariate polar plots of  $K^+$  concentration at Dunkerque during sampling period.



**(a)**



**(b)**

**Figure S6.** Correlations between the concentrations of (a) SOC and WSOC, and (b) SOC and HULIS-C.