



Figure S1. qPCR amplification specificity of 14 candidate reference genes. Amplification fragments were separated by 1.5% agarose gel electrophoresis.
 1: *ACT7*; 2: *ACT12*; 3: *ACT1*; 4: *18S rRNA*; 5: *eIF-3*; 6: *eIF4A-3*; 7: *eIF-2*; 8: *His3.3*; 9: *TUA6*; 10: *CYP38*; 11: *PP2A-2*; 12: *PP2A-3*; 13: *PP2A-4*; 14: *VAB2*; M: Marker 2K.

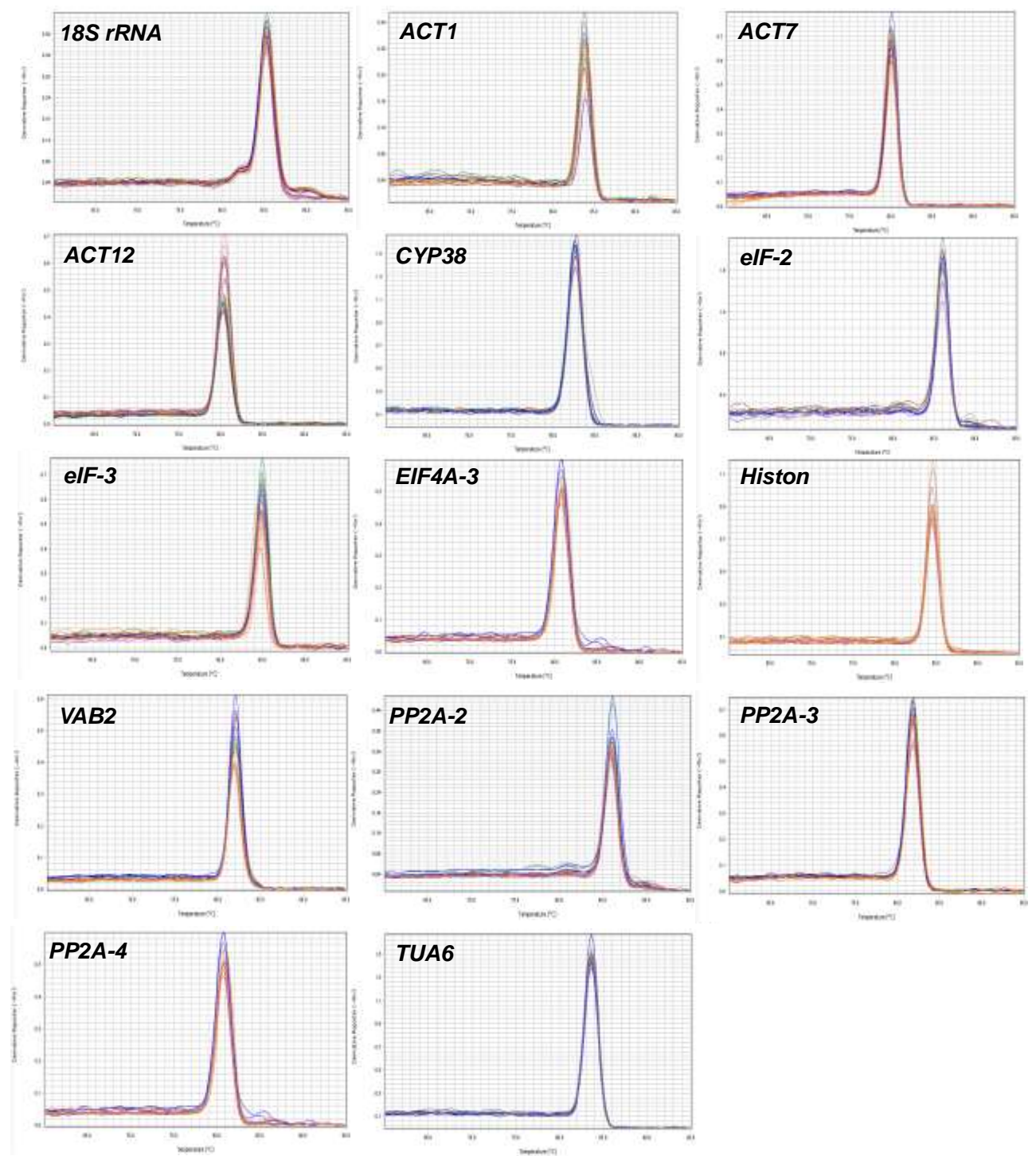


Fig. S2 Melt curves for the 14 candidate reference genes

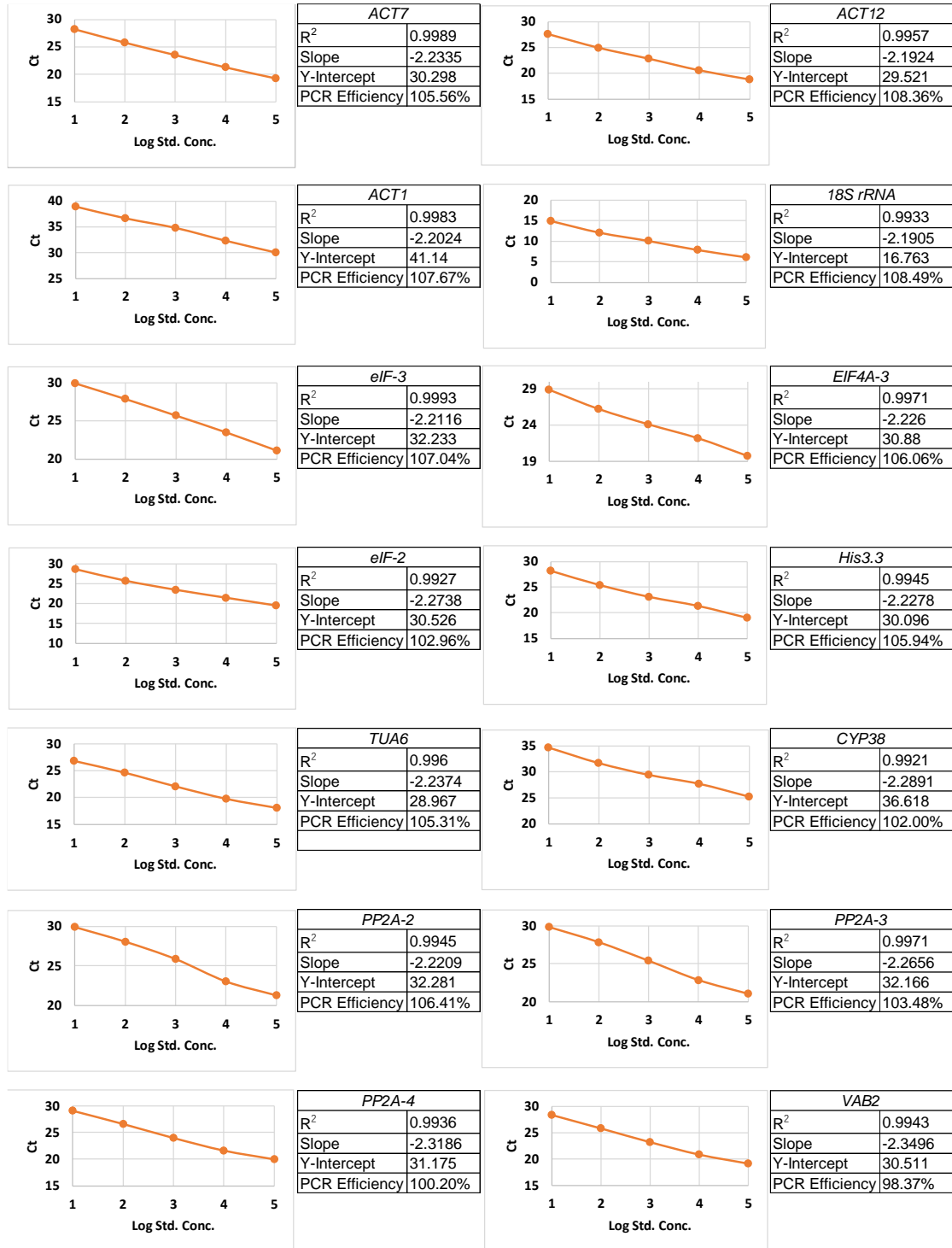


Fig. S3 Standard curves of the 14 candidate reference