

Copolymerization of Norbornene and Methyl Acrylate by Nickel Catalyst bearing 2-(Diarylphosphino)-N-Phenylbenzenamine Ligands

Lixin Cao,¹ Zhengguo Cai ^{1,*} and Mingyuan Li ^{2,*}

¹ State Key Laboratory for Modification of Chemical Fibers and Polymer Materials, College of Materials Science and Engineering, Donghua University, Shanghai 201620, P. R. China

² Department of Chemistry, Guangdong Technion - Israel Institute of Technology, Shantou 515063, P. R. China

*Correspondence: caizg@dhu.edu.cn (C.Z.); mingyuan.li@gtit.edu.cn (L.M.)

Table of Contents

1 Crystallographic Data for ligand L1 and complexes Ni1 and Ni2	2
2 Spectra Data	4
2.1 ³¹ P, ¹ H and ¹³ C NMR spectra of the ligands	4
2.1 MALDI-TOF-MS spectrometry of ligands and complexes	8
2.3 ¹ H and ¹³ C NMR spectra of copolymers	10
2.4 GPC data of homopolymers and copolymers	13
2.5 DSC data of copolymers	20

1 Crystallographic data for ligand L2 and complexes Ni1 and Ni2

Table S1. Crystal data and structure refinement for complexes **Ni1** and **Ni2**.

Entry	Ni1	Ni2
Empirical formula	C ₂₅ H ₂₂ Br ₂ Cl ₂ NNiP	C ₂₇ H ₂₄ Br ₂ Cl ₂ NNiO ₂ P
Formula weight	656.839	714.876
Temperature (K)	300.0	299.0
Wavelength (Å)	1.34139	1.34139
Crystal system	triclinic	monoclinic
Space group	P-1	P2 ₁ /n
a (Å)	9.0465(7)	9.1088(11)
b (Å)	10.6576(8)	17.448(2)
c (Å)	14.8738(11)	18.5128(19)
α (°)	78.729(3)	90
β (°)	77.450(3)	93.780(3)
γ (°)	72.622(3)	90
Volume (Å ³)	1322.70(17)	2935.9(6)
Z	2	4
Density (calculated) (Mg/m ³)	1.326	1.385
Absorption coefficient (mm ⁻¹)	2.854	3.355
F(000)	652.9	1425.9
Crystal size (mm ³)	0.05 x 0.03 x 0.02	0.06 x 0.04 x 0.02
Theta range for data collection (°)	4.04 to 50.86	4.4 to 50.8
Index ranges	-10 ≤ h ≤ 10, -12 ≤ k ≤ 17, -17 ≤ l ≤ 17	-10 ≤ h ≤ 10, -21 ≤ k ≤ 21, -22 ≤ l ≤ 22
Reflections collected	66926	136841
Independent reflections	4864 [R(int) = 0.1014]	5376 [R(int) = 0.1097]
Completeness to theta = 53.594°	100%	99.9%
Absorption correction	Semi-empirical from equivalents	Semi-empirical from equivalents
Max. and min. transmission	0.7508 and 0.6090	0.7508 and 0.4890
Refinement method	Full-matrix least-squares on F ²	Full-matrix least-squares on F ²
Data / restraints / parameters	4864 / 21 / 289	5376 / 0 / 312
Goodness-of-fit on F ²	1.058	1.058
Final R indices [I>2σ(I)]	R1 = 0.0466, wR2 = 0.1157	R1 = 0.0503, wR2 = 0.1370
R indices (all data)	R1 = 0.0640, wR2 = 0.1277	R1 = 0.0604, wR2 = 0.1497
Extinction coefficient	n/a	n/a
Largest diff. peak and hole	1.37 and -1.04	0.86 and -0.99

(e.Å⁻³)

Table S2. Crystal data and structure refinement for ligand **L2**.

Entry	L2
Empirical formula	C ₂₆ H ₂₄ N ₁ OP ₁
Formula weight	413.44
Temperature (K)	173.0
Wavelength (Å)	1.34139
Crystal system	Triclinic
Space group	P-1
a (Å)	7.3625(3)
b (Å)	11.3415(5)
c (Å)	13.1442(6)
α (°)	81.111(2)
β (°)	81.669(2)
γ (°)	83.559(2)
Volume (Å ³)	1068.40(8)
Z	4
Density (calculated) (Mg/m ³)	1.285
Absorption coefficient (mm ⁻¹)	0.850
F(000)	436
Crystal size (mm ³)	0.08 x 0.06 x 0.06
Theta range for data collection (°)	3.446 to 55.035
Index ranges	-8<=h<=8, -13<=k<=13, -16<=l<=15
Reflections collected	12523
Independent reflections	4023 [R(int) = 0.0635]
Completeness to theta = 53.594°	99.2 %
Absorption correction	Semi-empirical from equivalents
Max. and min. transmission	0.7508 and 0.5390
Refinement method	Full-matrix least-squares on F ²
Data / restraints / parameters	4023 / 0 / 273
Goodness-of-fit on F ²	1.039
Final R indices [I>2sigma(I)]	R1 = 0.0593, wR2 = 0.1599
R indices (all data)	R1 = 0.0681, wR2 = 0.1710
Extinction coefficient	n/a
Largest diff. peak and hole (e.Å ⁻³)	0.547 and -0.675

2 Spectra data

2.1 ^{31}P , ^1H and ^{13}C NMR spectra of the ligands.

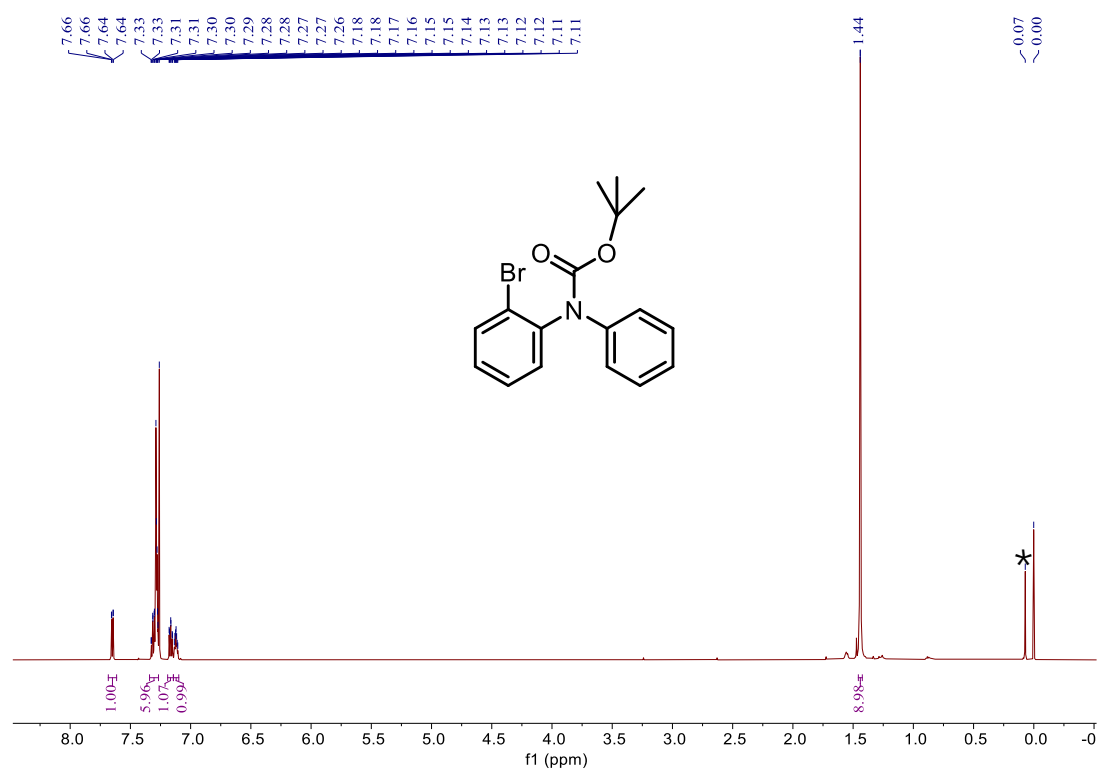


Figure S1. ^{31}P NMR spectrum of *tert*-butyl N-(2-bromophenyl)-N-phenylcarbamate in CDCl₃ (*silicone grease).

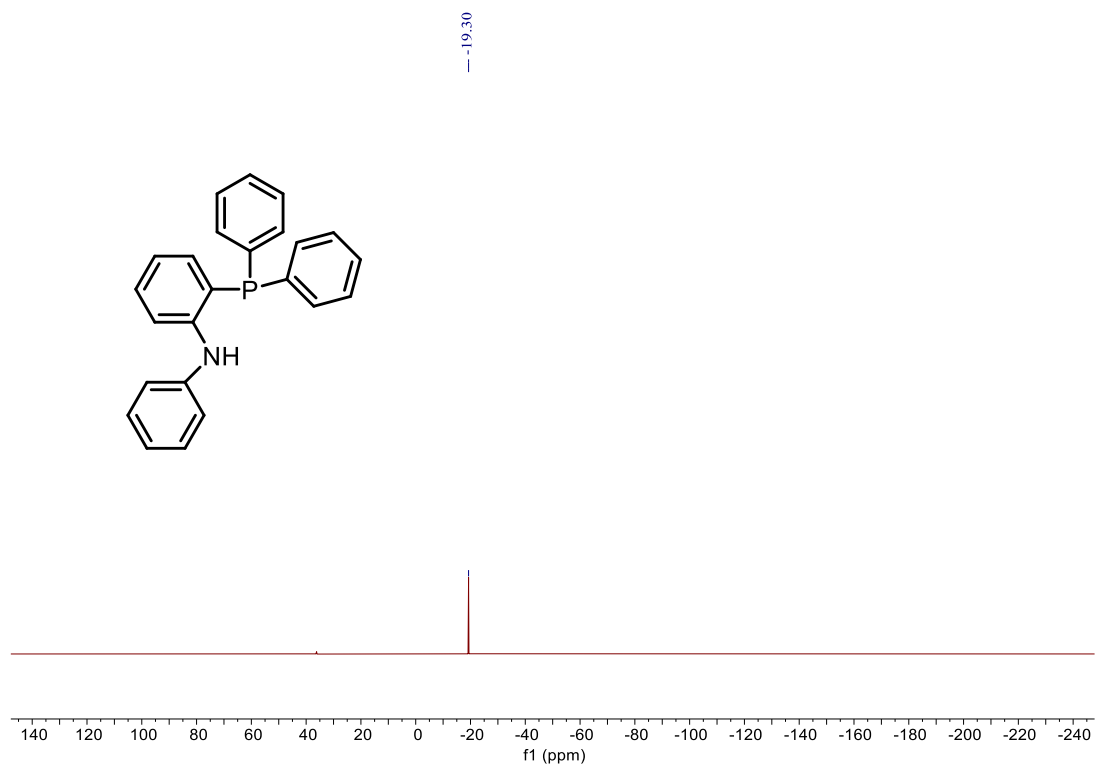


Figure S2. ^{31}P NMR spectrum of **L1** in CDCl_3 .

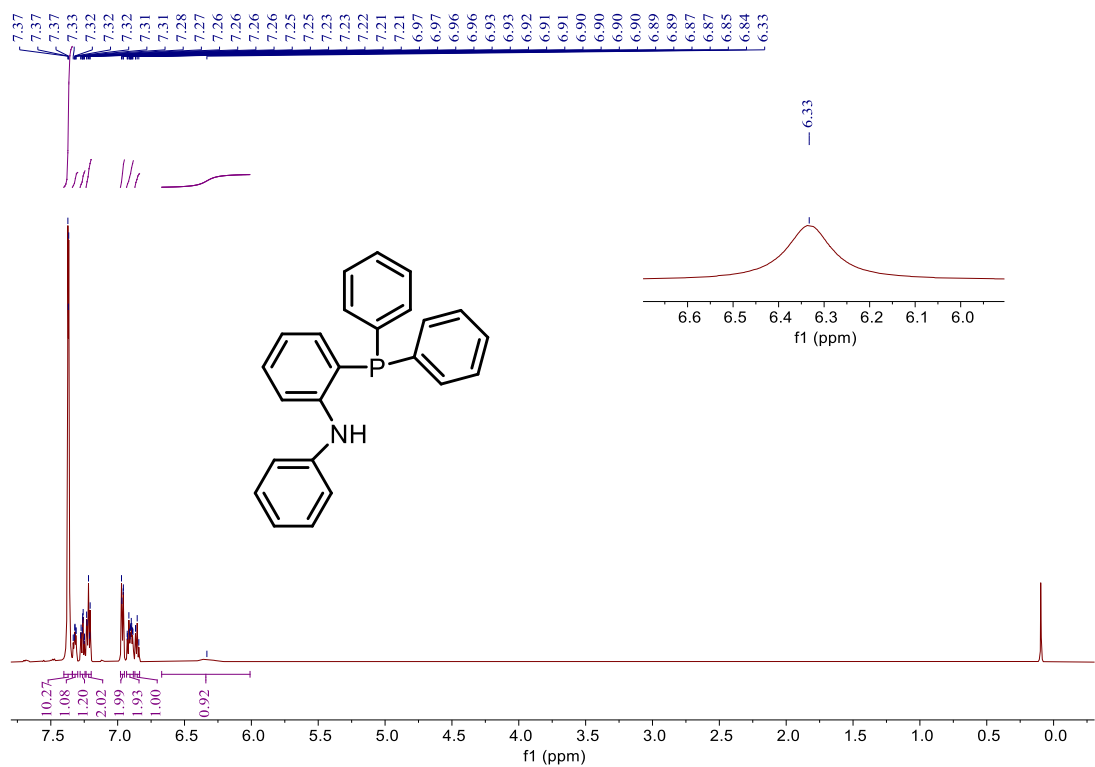


Figure S3. ^1H NMR spectrum of **L1** in CDCl_3 .

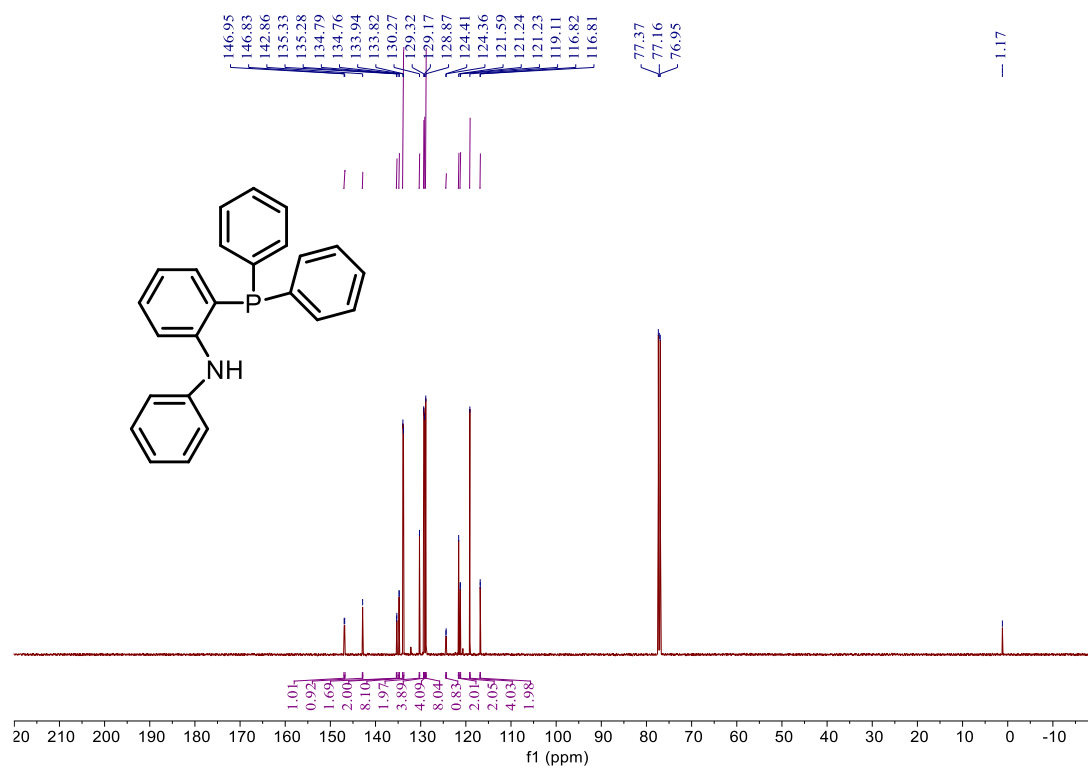


Figure S4. ¹³C NMR spectrum of **L1** in CDCl₃.

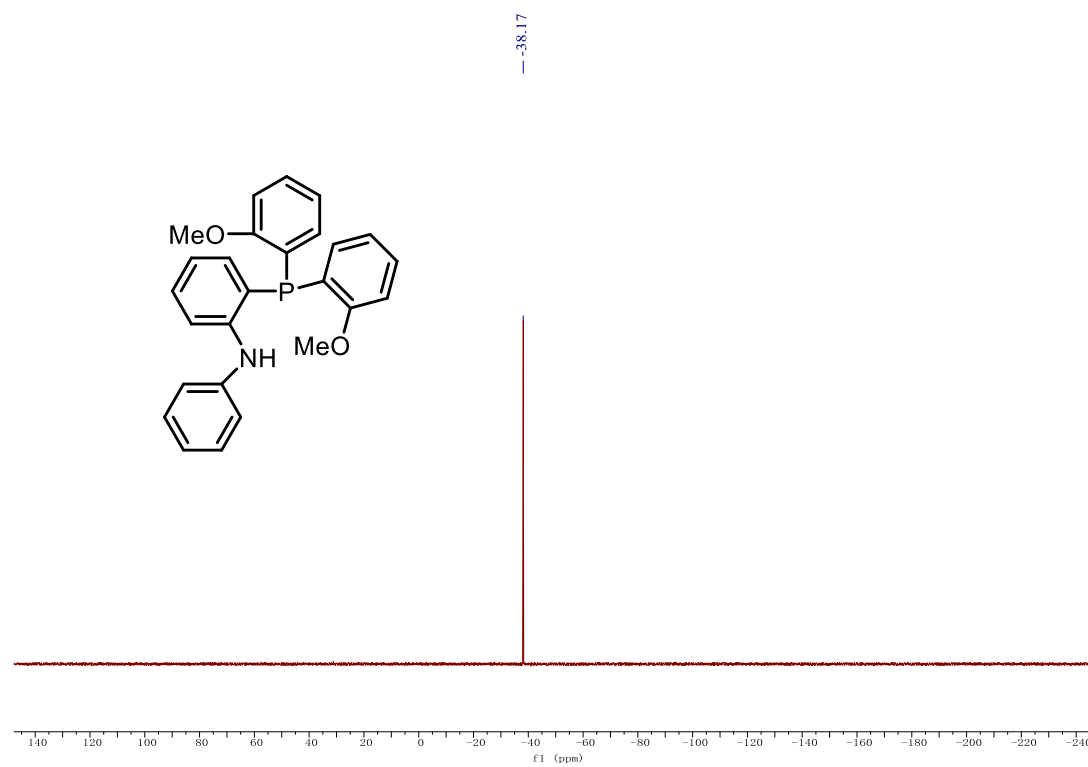


Figure S5. ³¹P NMR spectrum of **L2** in DMSO-*d*₆.

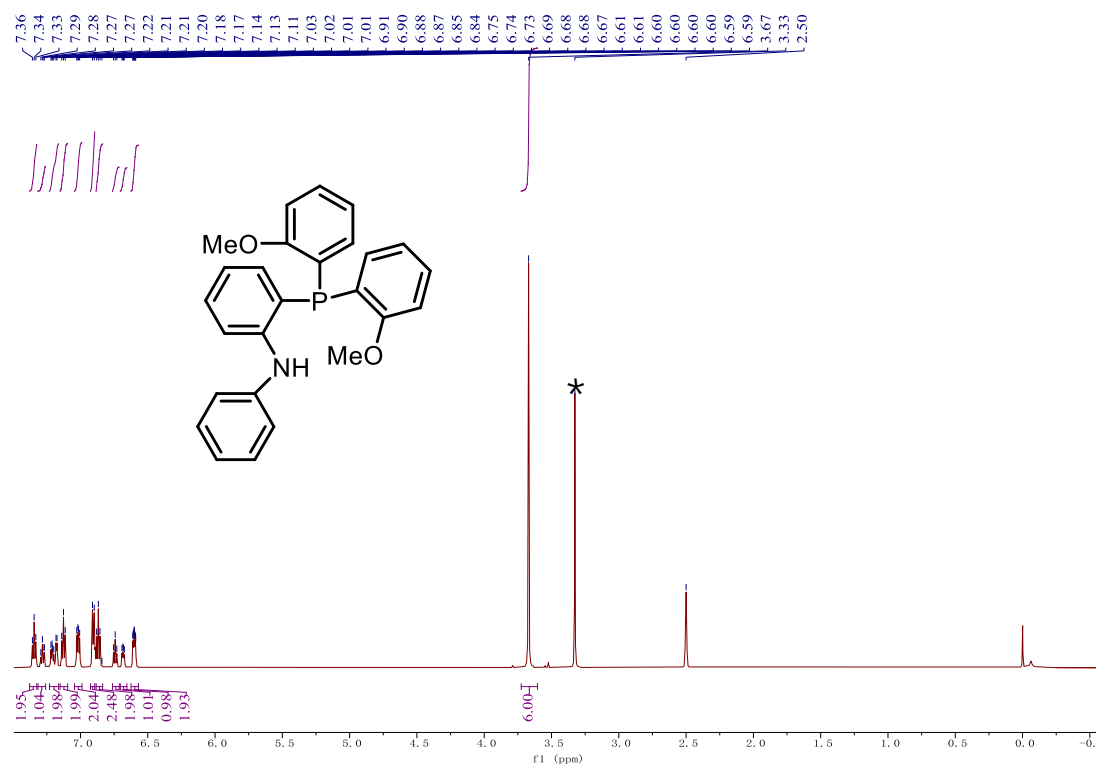


Figure S6. ^1H NMR spectrum of **L2** in $\text{DMSO-}d_6$ (* H_2O).

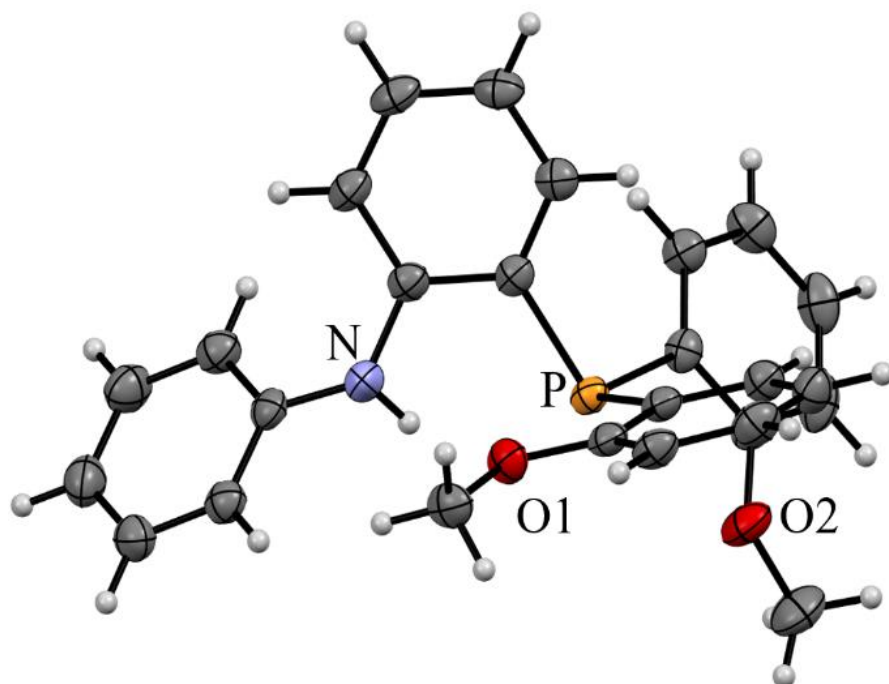


Figure S7. ORTEP representation of ligand **L2** (50% thermal ellipsoids).

2.1 MALDI-TOF-MS spectrometry of ligands and complexes.

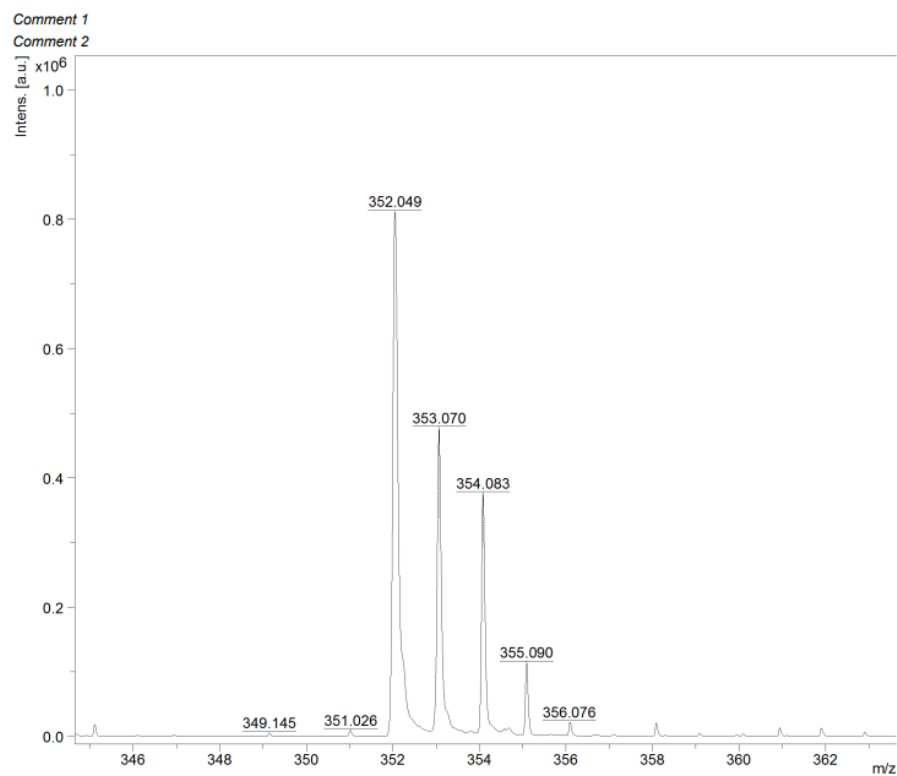


Figure S8. MALDI-TOF-MS spectrum of L1.

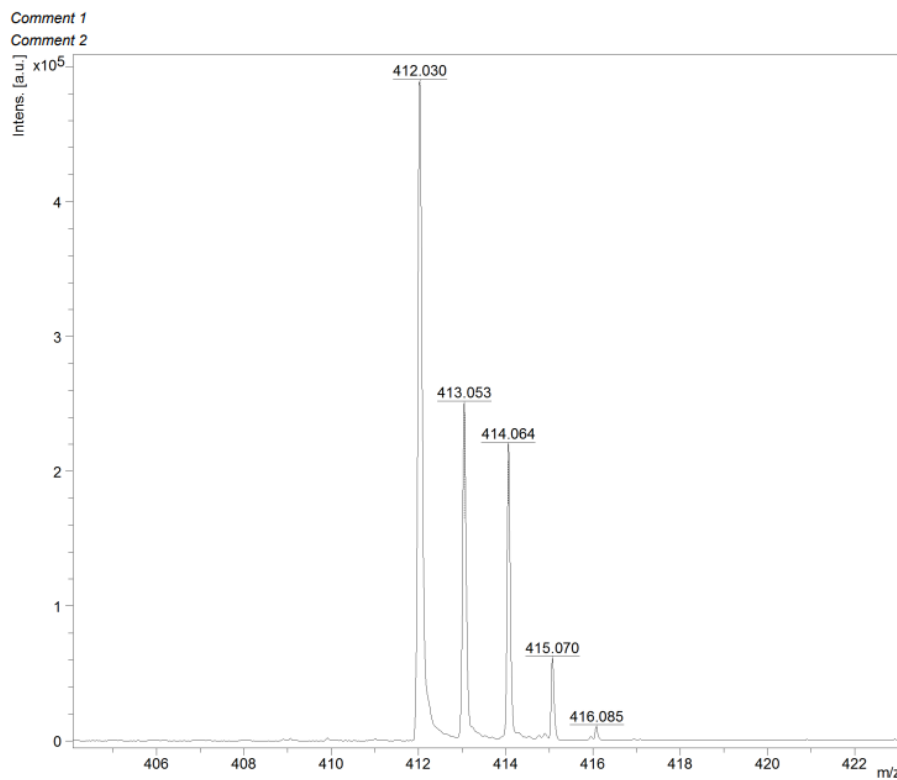


Figure S9. MALDI-TOF-MS spectrum of L2.

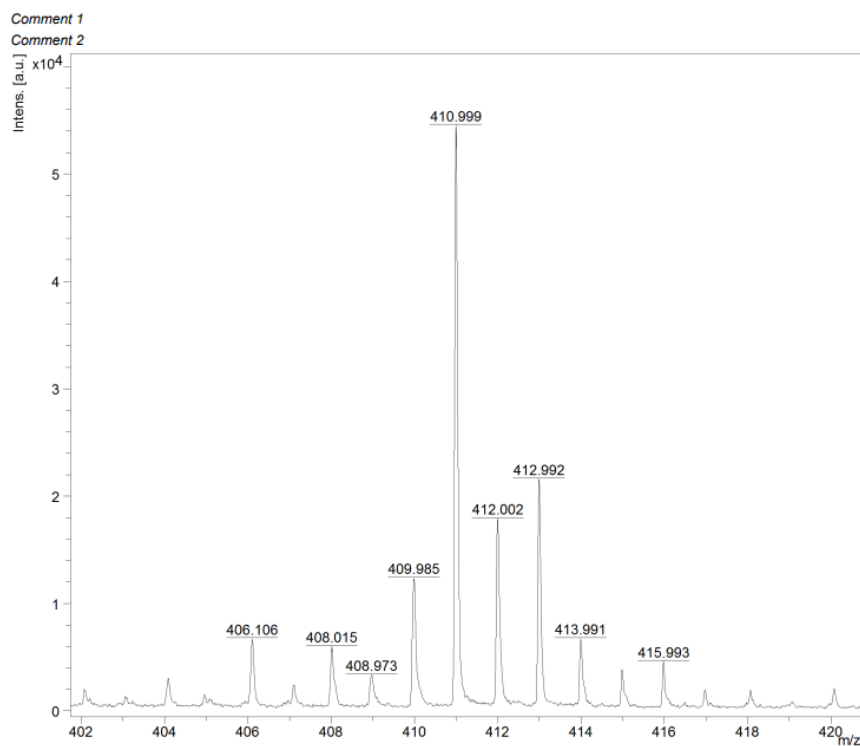


Figure S10. MALDI-TOF-MS spectrum of Ni1.

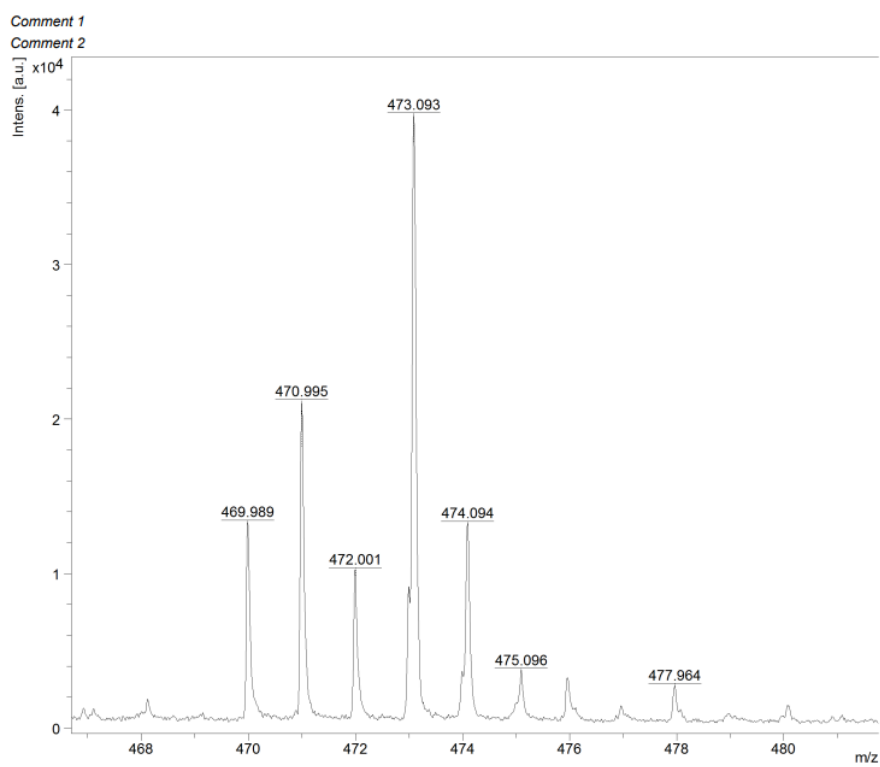


Figure S11. MALDI-TOF-MS spectrum of Ni2.

2.3 ^1H and ^{13}C NMR spectra of copolymers

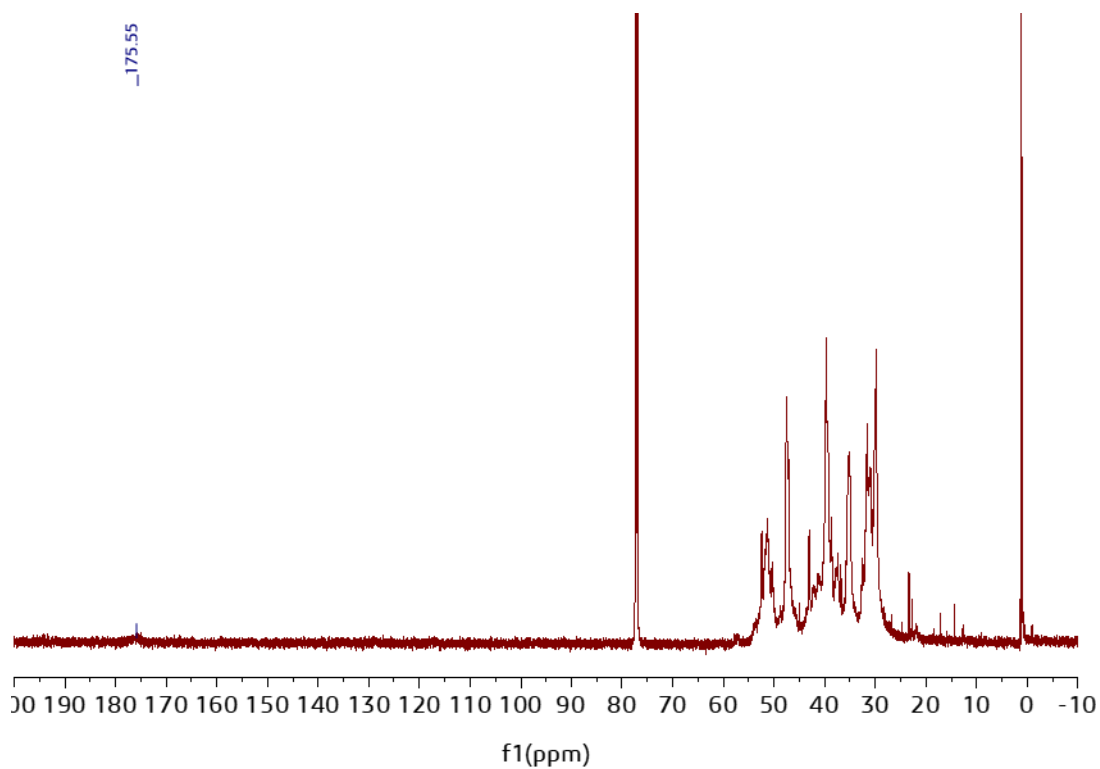


Figure S12. ^{13}C NMR spectrum of copolymer from Table 2, entry 3.

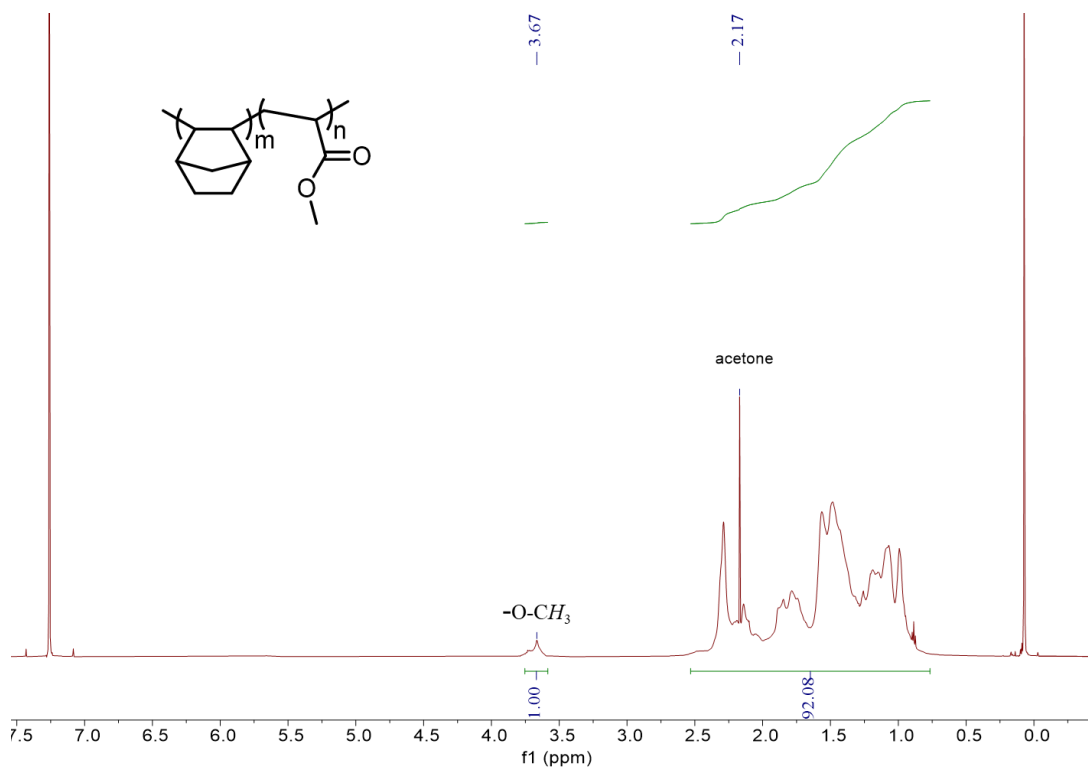


Figure S13. ^1H NMR spectrum of copolymer from Table 2, entry 1.

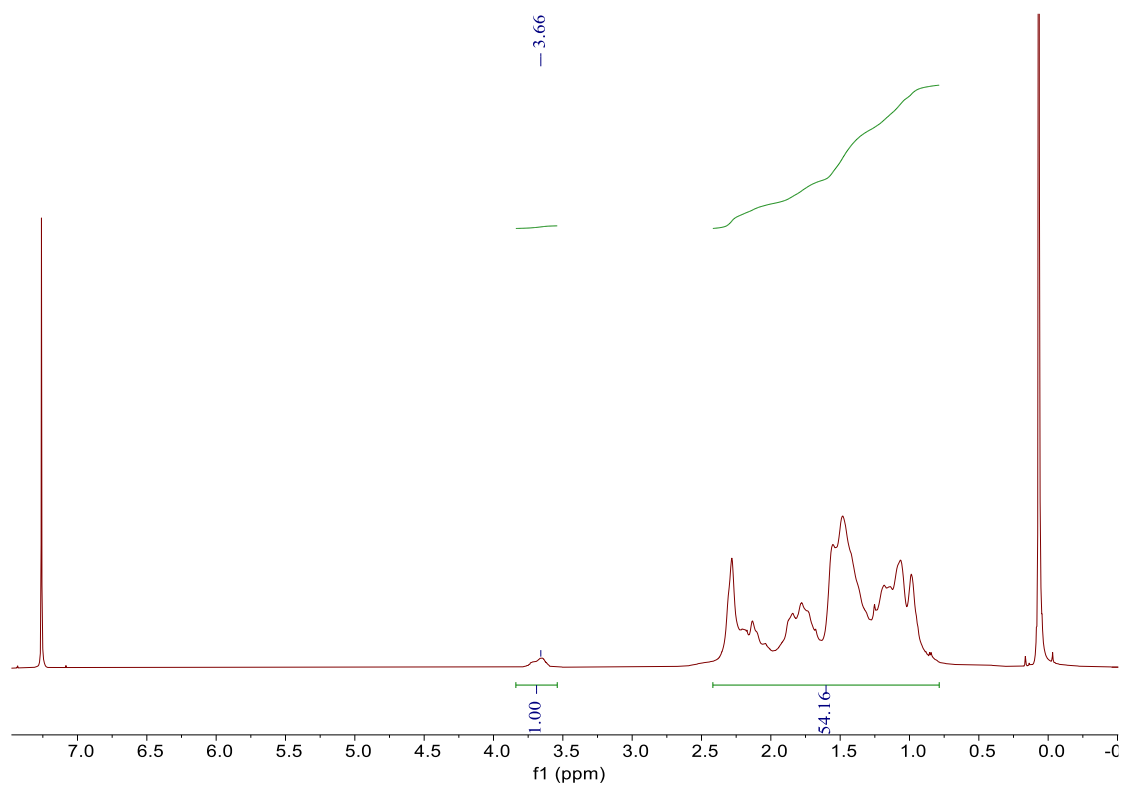


Figure S14. ^1H NMR spectrum of copolymer from Table 2, entry 2.

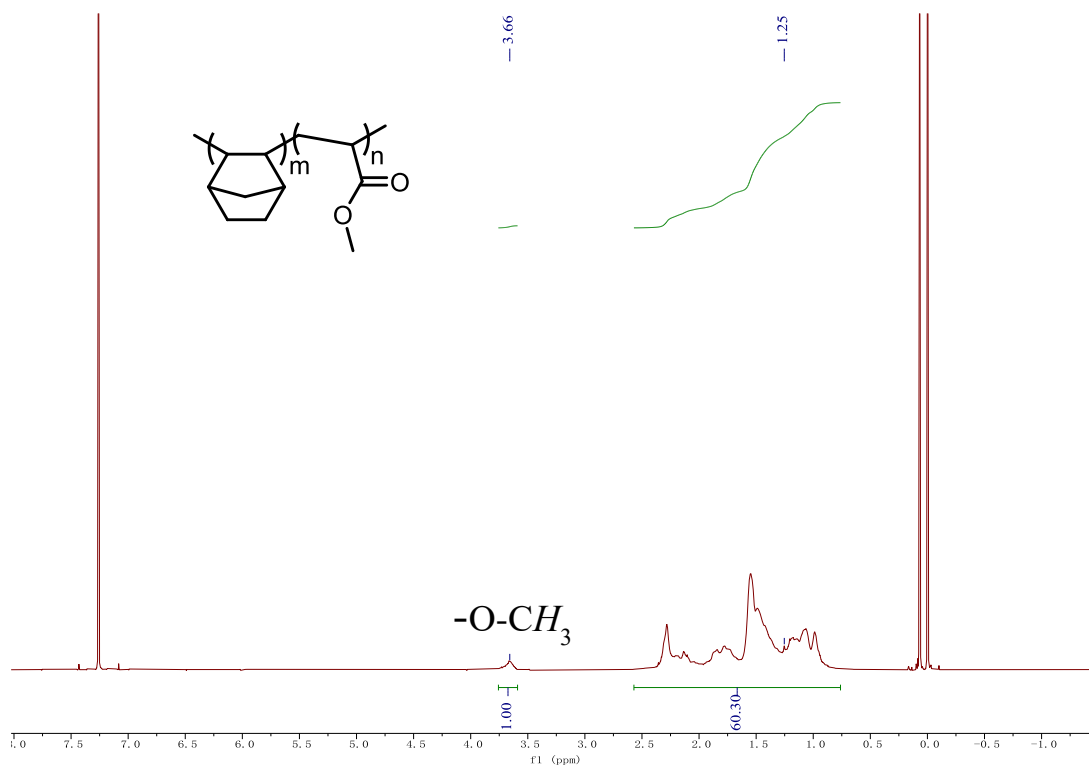


Figure S15. ^1H NMR spectrum of copolymer from Table 2, entry 3.

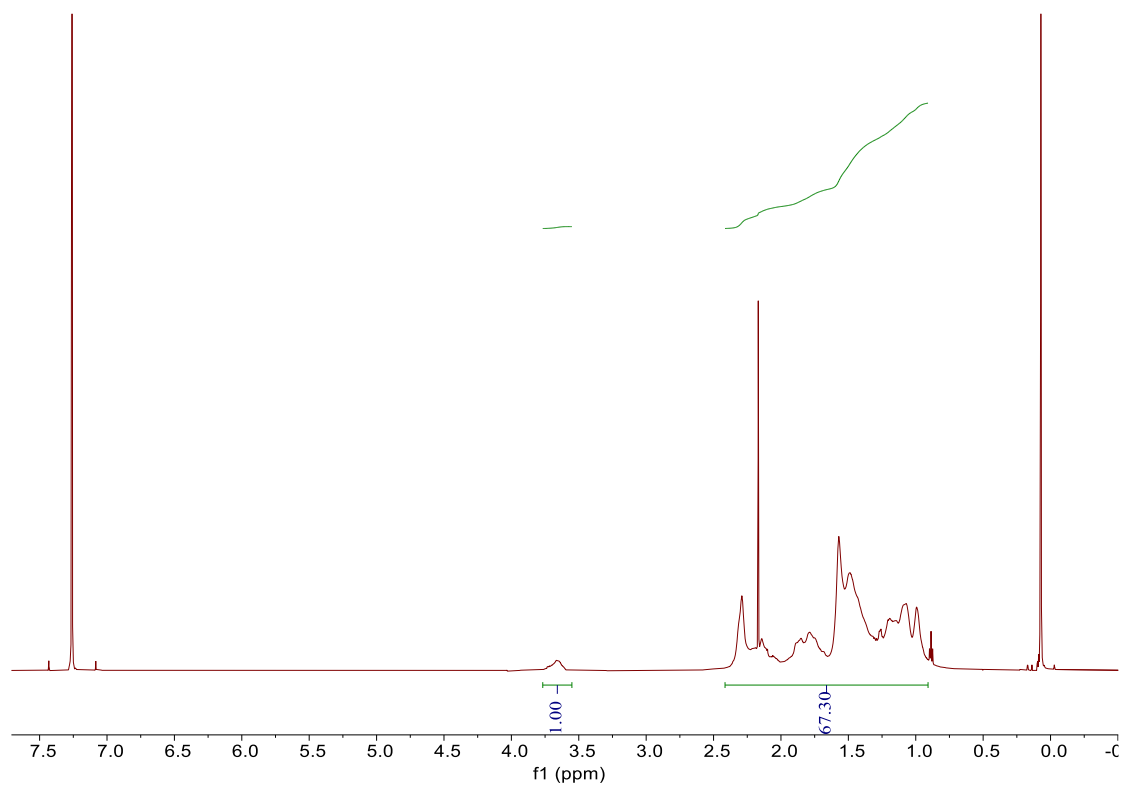


Figure S16. ¹H NMR spectrum of copolymer from Table 2, entry 4.

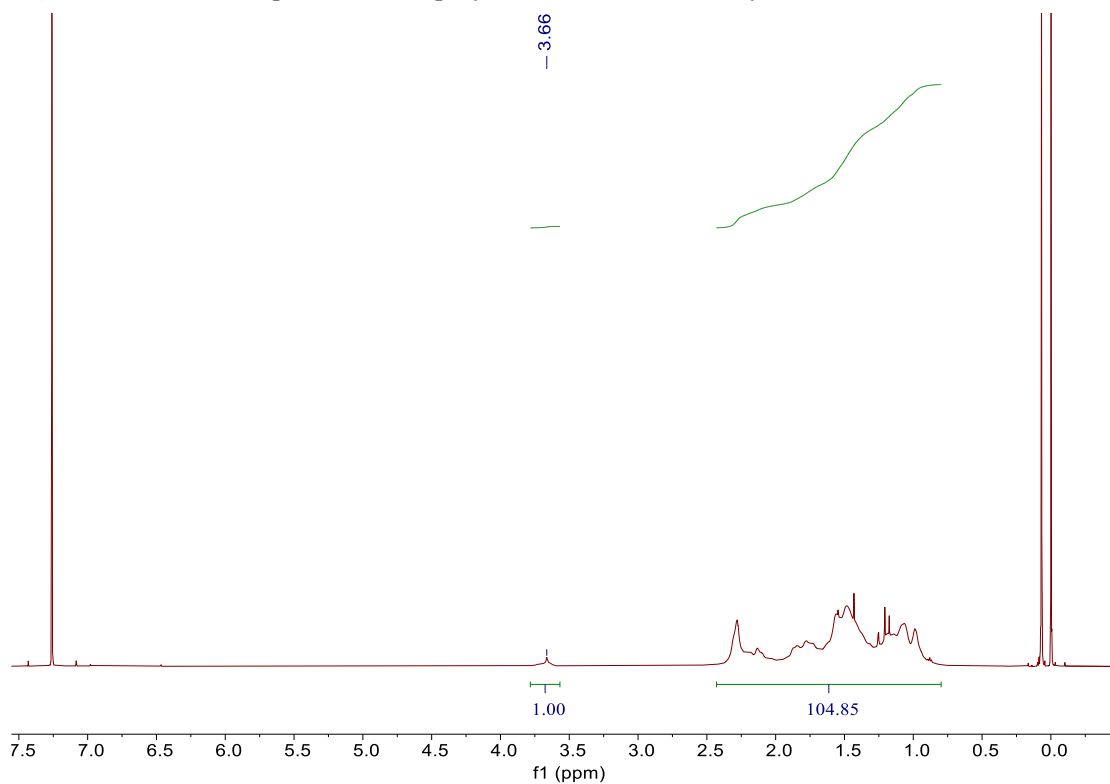


Figure S17. ¹H NMR spectrum of copolymer from Table 2, entry 5.

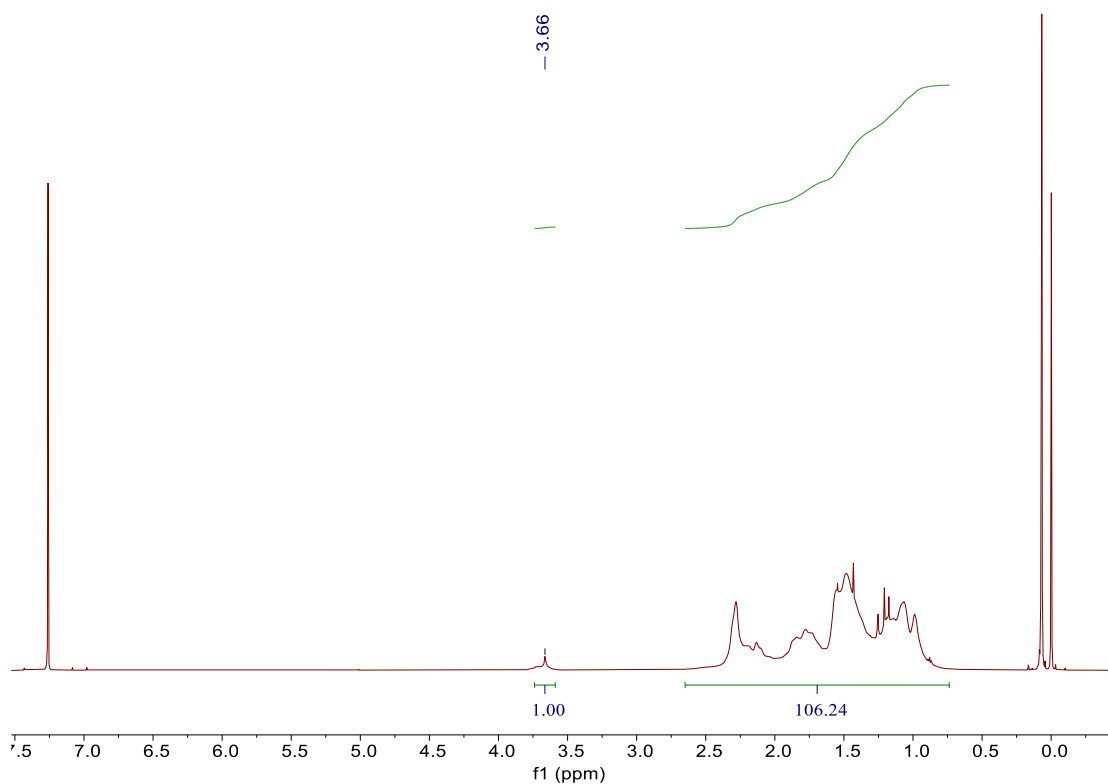


Figure S18. ^1H NMR spectrum of copolymer from Table 2, entry 6.

2.4 GPC data of polymer and copolymer

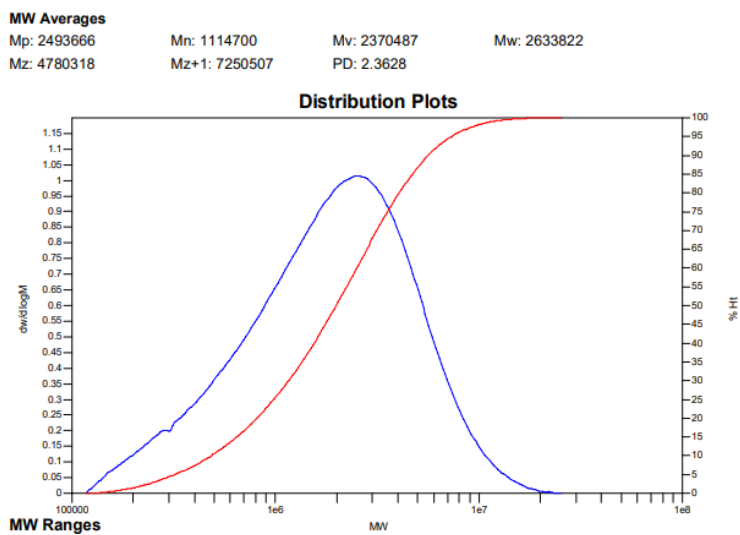


Figure S19. GPC data of the polymer from Table 1, entry 1.

MW Averages

Mp: 2598251 Mn: 1055123 Mv: 2283320 Mw: 2532709
Mz: 4483517 Mz+1: 6531876 PD: 2.4004

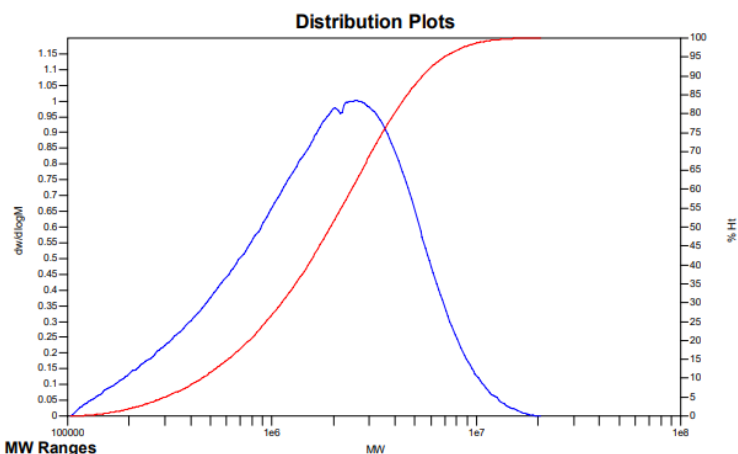


Figure S20. GPC data of the polymer from Table 1, entry 2.

MW Averages

Mp: 3999724 Mn: 1947133 Mv: 3922610 Mw: 4310371
Mz: 7366350 Mz+1: 10801220 PD: 2.2137

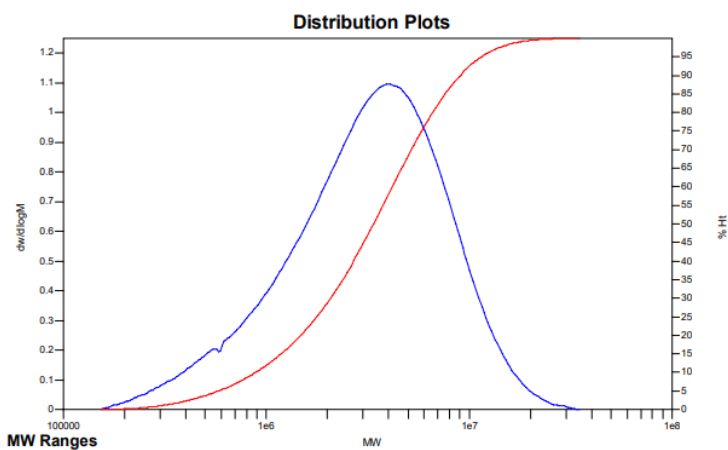


Figure S21. GPC data of the polymer from Table 1, entry 3.

MW Averages

Mp: 4911835 Mn: 2232385 Mv: 5145984 Mw: 5738706
Mz: 10578315 Mz+1: 16044205 PD: 2.5707

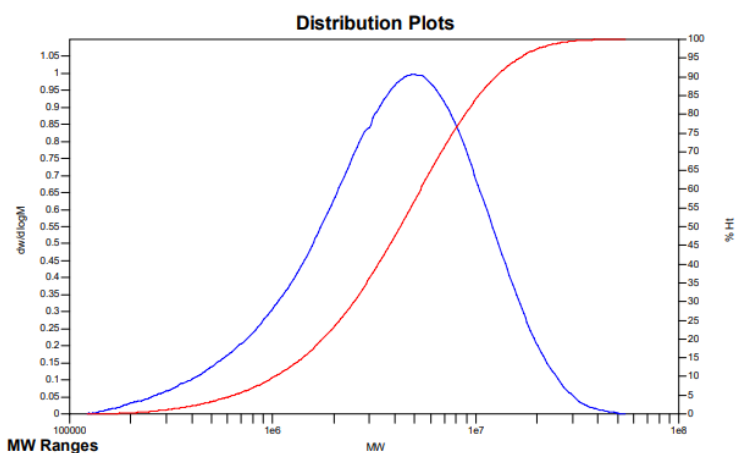


Figure S22. GPC data of the polymer from Table 1, entry 4.

MW Averages

Mp: 5332481 Mn: 2743683 Mv: 5564762 Mw: 6131354
Mz: 10611977 Mz+1: 15438445 PD: 2.2347

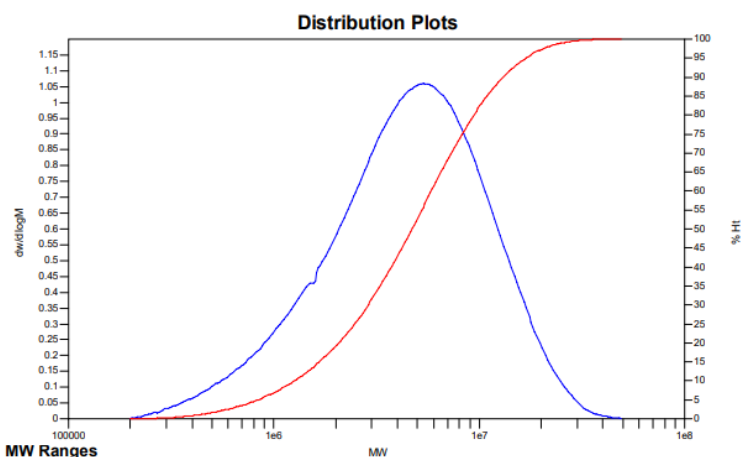


Figure S23. GPC data of the polymer from Table 1, entry 5.

MW Averages

Mp: 3535914 Mn: 1364875 Mv: 3399330 Mw: 3811780
Mz: 7181173 Mz+1: 11027160 PD: 2.7928

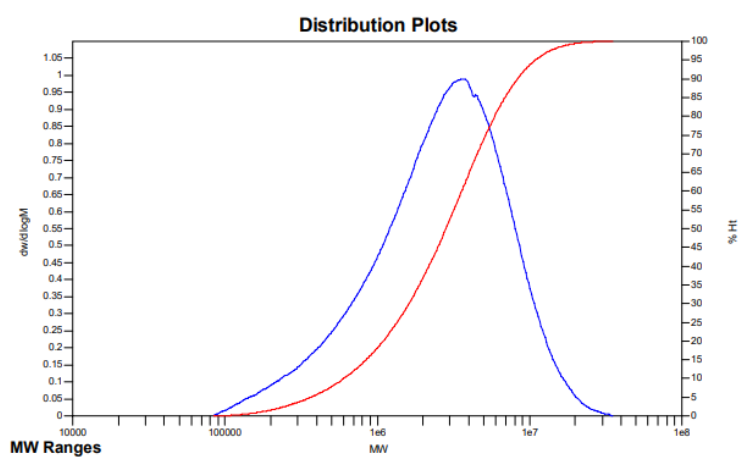


Figure S24. GPC data of the polymer from Table 1, entry 6.

MW Averages

Mp: 3464020 Mn: 1374080 Mv: 3285797 Mw: 3677346
Mz: 6806121 Mz+1: 10127961 PD: 2.6762

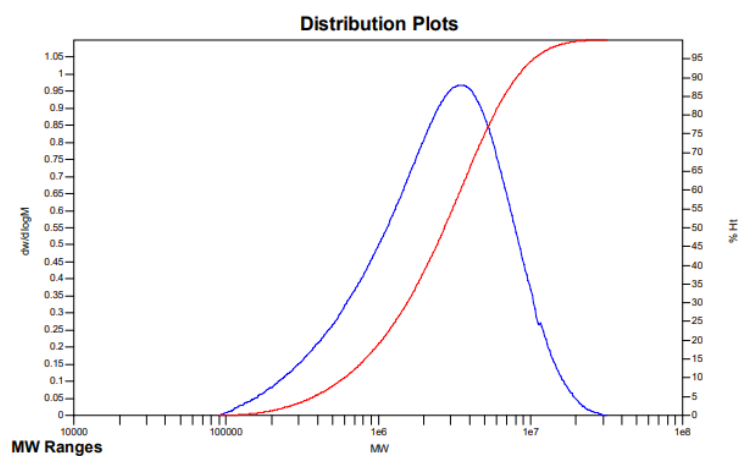


Figure S25. GPC data of the polymer from Table 1, entry 7.

MW Averages
 Mp: 2707222 Mn: 1057687 Mv: 2446778 Mw: 2729397
 Mz: 4963096 Mz+1: 7313067 PD: 2.5805

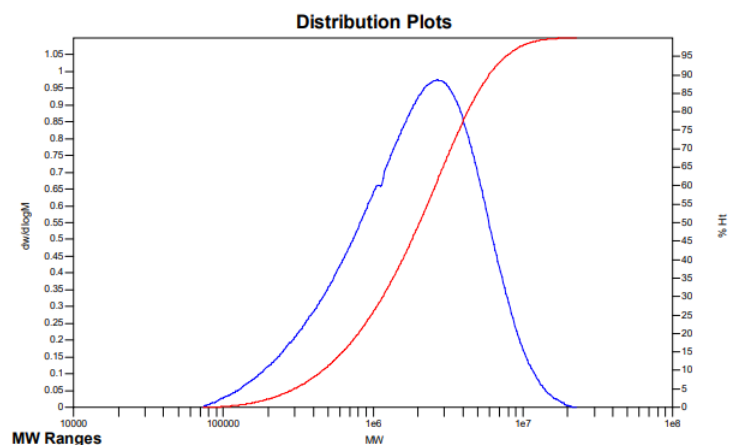


Figure S26. GPC data of the polymer from Table 1, entry 8.

MW Averages
 Mp: 2393291 Mn: 926606 Mv: 2085413 Mw: 2307345
 Mz: 4014098 Mz+1: 5817539 PD: 2.4901

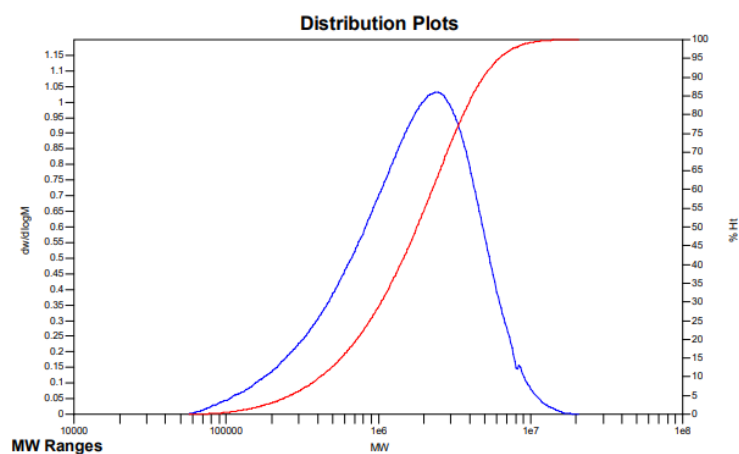


Figure S27. GPC data of the polymer from Table 1, entry 9.

MW Averages
 Mp: 4167473 Mn: 1742976 Mv: 3912747 Mw: 4363069
 Mz: 7937286 Mz+1: 11742152 PD: 2.5032

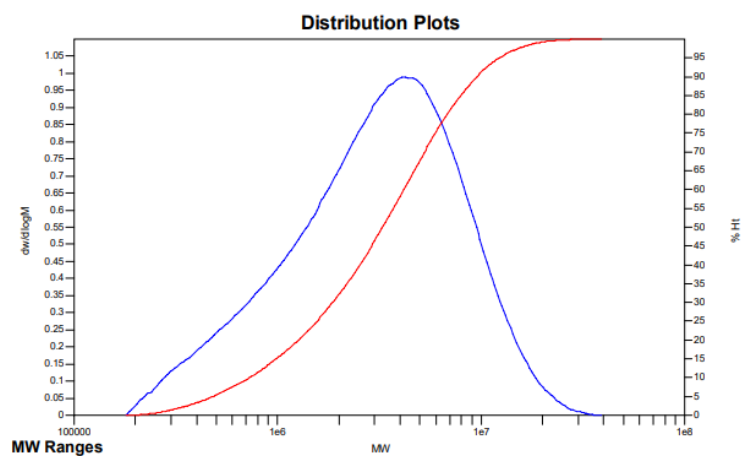


Figure S28. GPC data of the polymer from Table 1, entry 10.

MW Averages

Mp: 3062331 Mn: 987997 Mv: 2614708 Mw: 2956992
Mz: 5725453 Mz+1: 8703246 PD: 2.9929

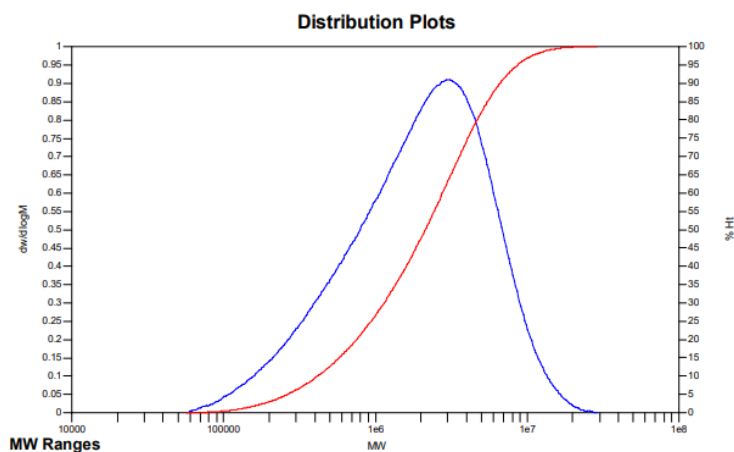


Figure S29. GPC data of the polymer from Table 1, entry 11.

MW Averages

Mp: 2820763 Mn: 940319 Mv: 2434581 Mw: 2745464
Mz: 5253549 Mz+1: 8008309 PD: 2.9197

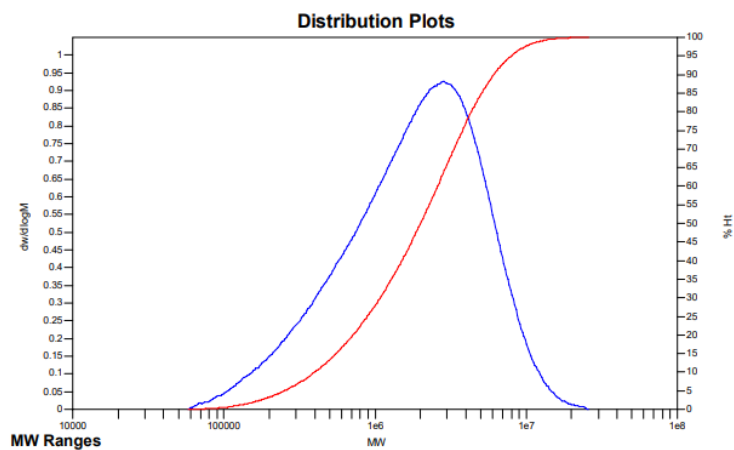


Figure S30. GPC data of the polymer from Table 1, entry 12.

MW Averages

Mp: 2879307 Mn: 1037706 Mv: 2444665 Mw: 2720880
Mz: 4905366 Mz+1: 7407379 PD: 2.6220

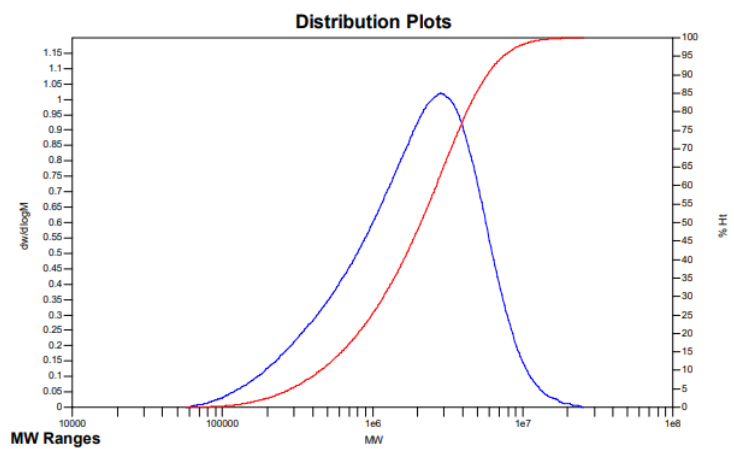


Figure S31. GPC data of the polymer from Table 1, entry 13.

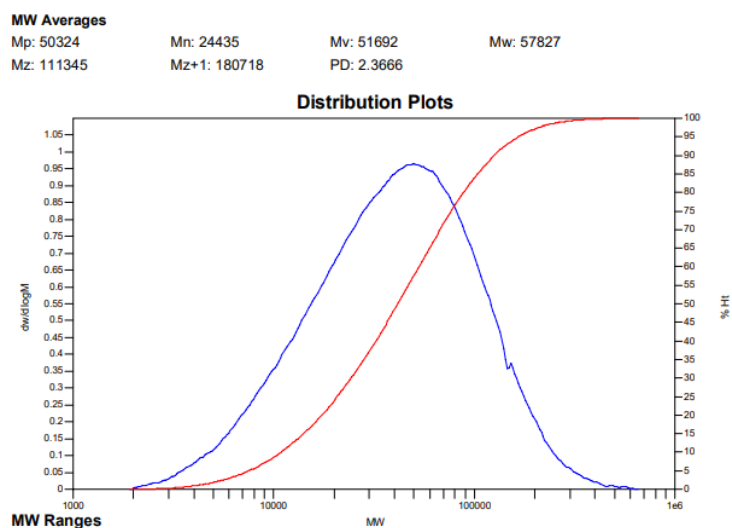


Figure S32. GPC data of the polymer from Table 2, entry 1.

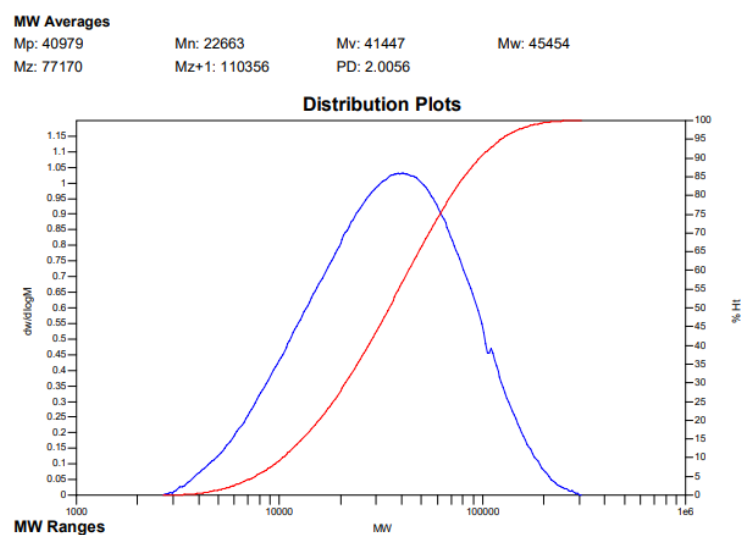


Figure S33. GPC data of the polymer from Table 2, entry 2.

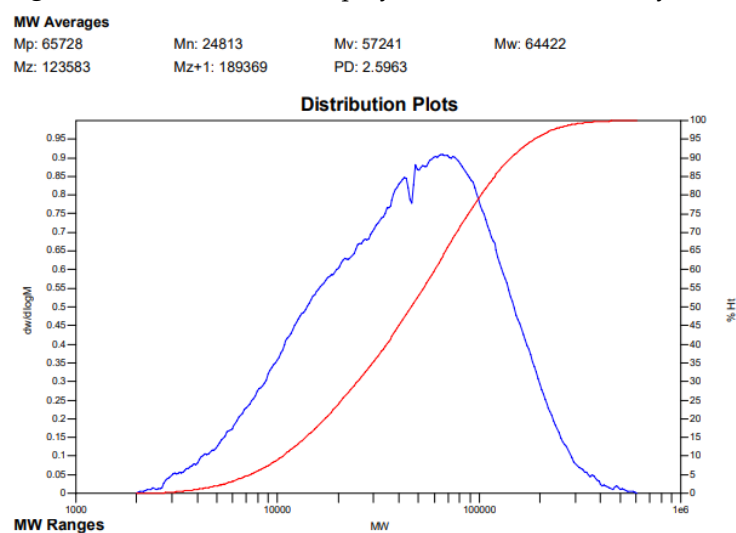


Figure S34. GPC data of the polymer from Table 2, entry 3.

MW Averages

Mp: 132154 Mn: 62000 Mv: 137195 Mw: 151893
Mz: 272272 Mz+1: 419437 PD: 2.4499

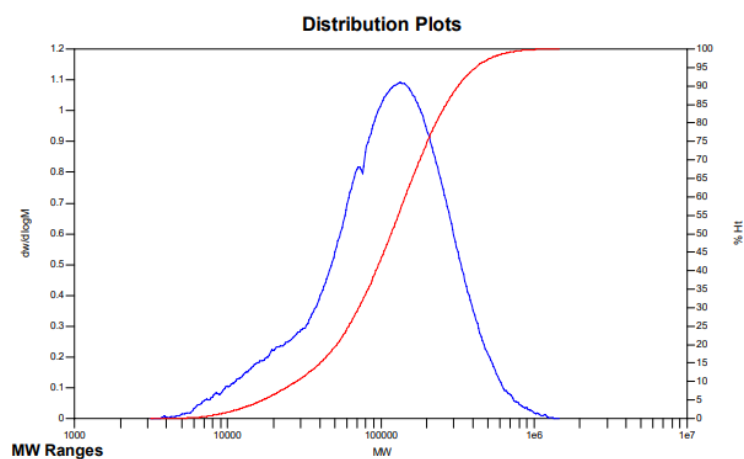


Figure S35. GPC data of the polymer from Table 2, entry 4.

MW Averages

Mp: 34768 Mn: 28778 Mv: 108014 Mw: 133767
Mz: 392033 Mz+1: 671547 PD: 4.6482

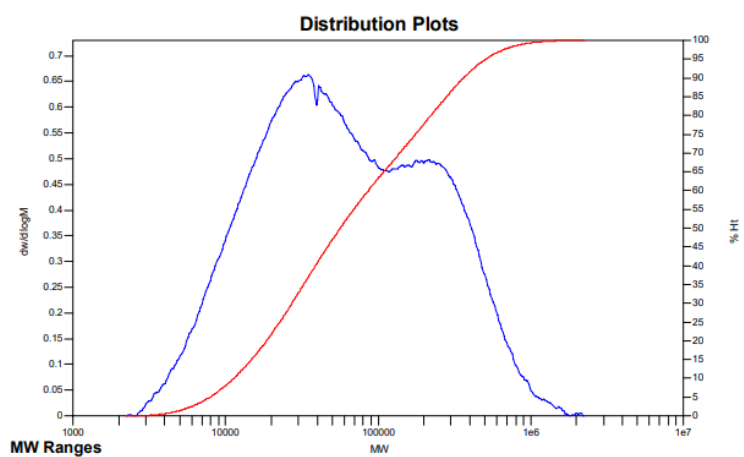


Figure S36. GPC data of the polymer from Table 2, entry 6.

2.5 DSC data of copolymer

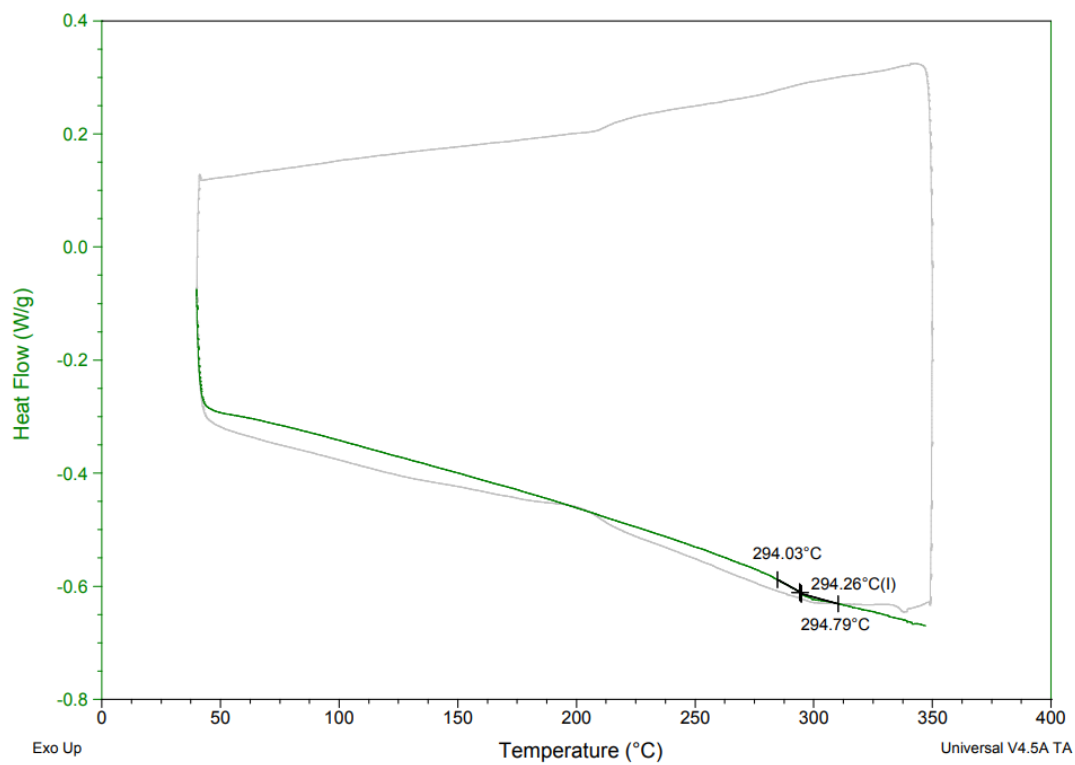


Figure S37. DSC curves of the polymer from Table 2, entry 1

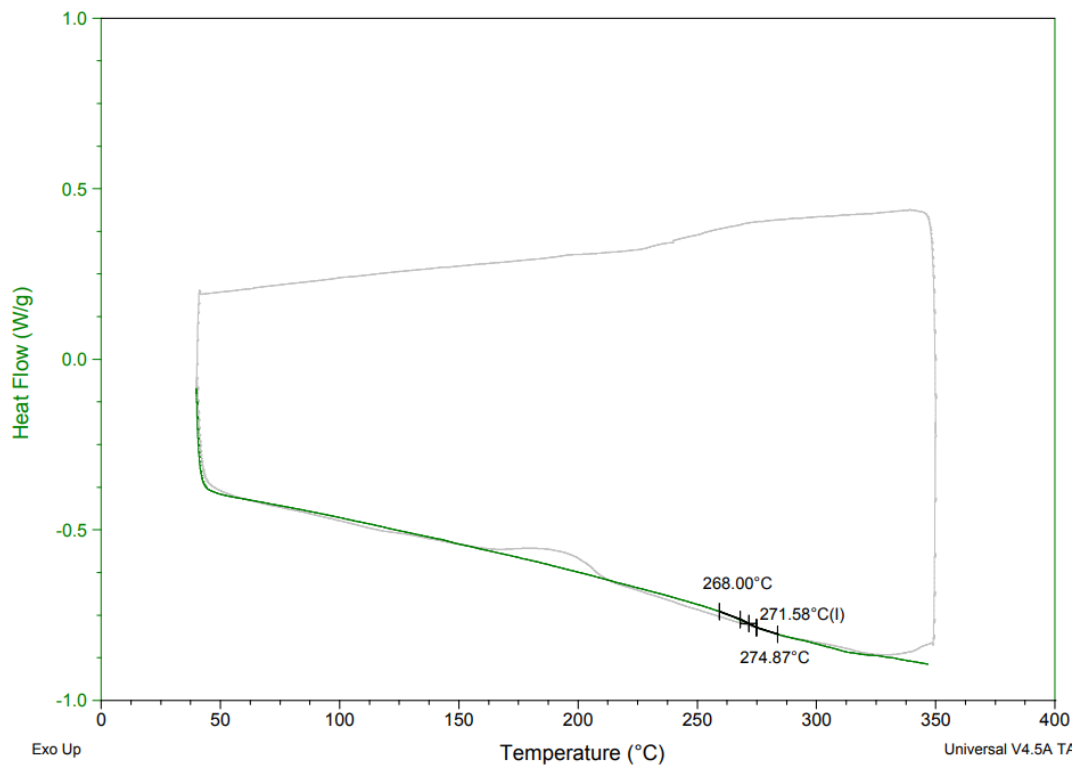


Figure S38. DSC data of the polymer from Table 2, entry 2

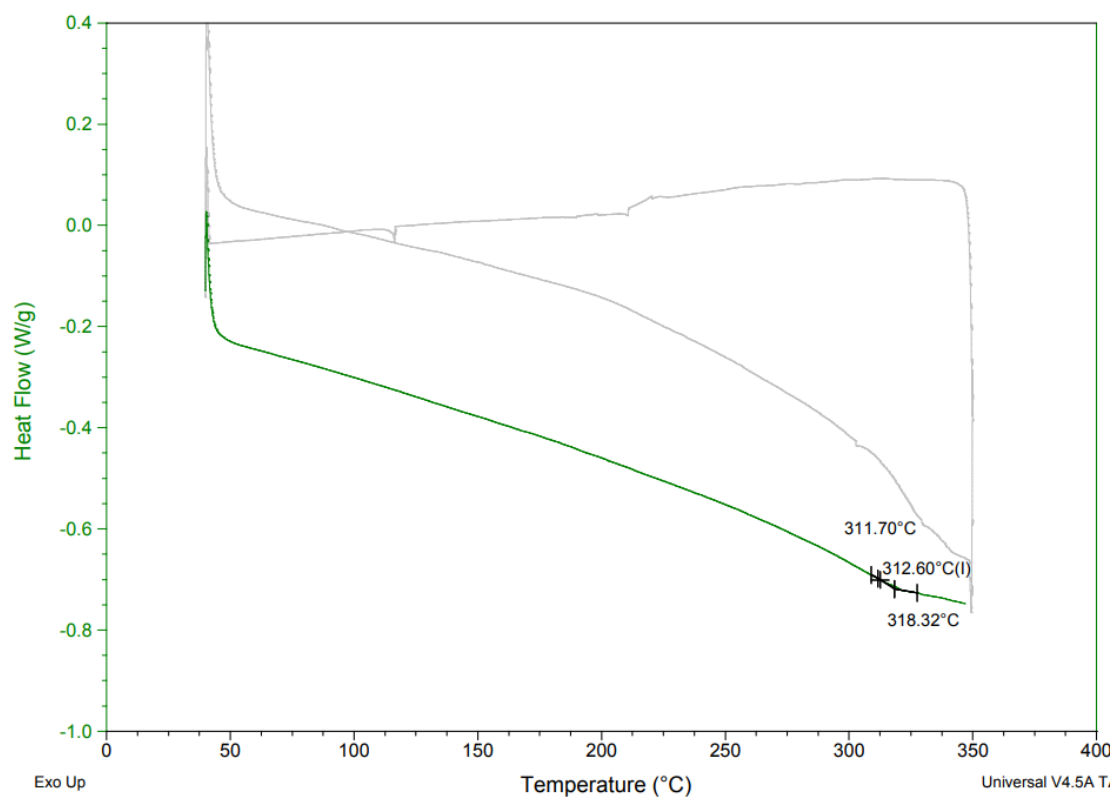


Figure S39. DSC data of the polymer from Table 2, entry 3

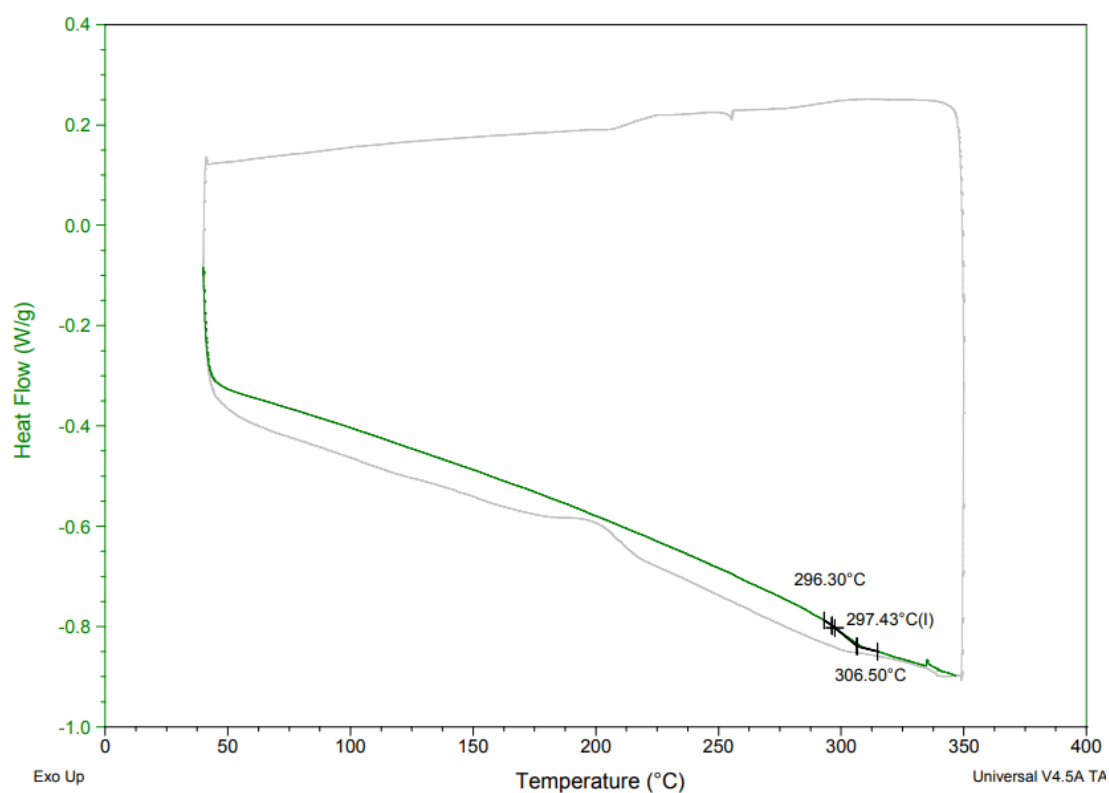


Figure S40. DSC data of the polymer from Table 2, entry 5

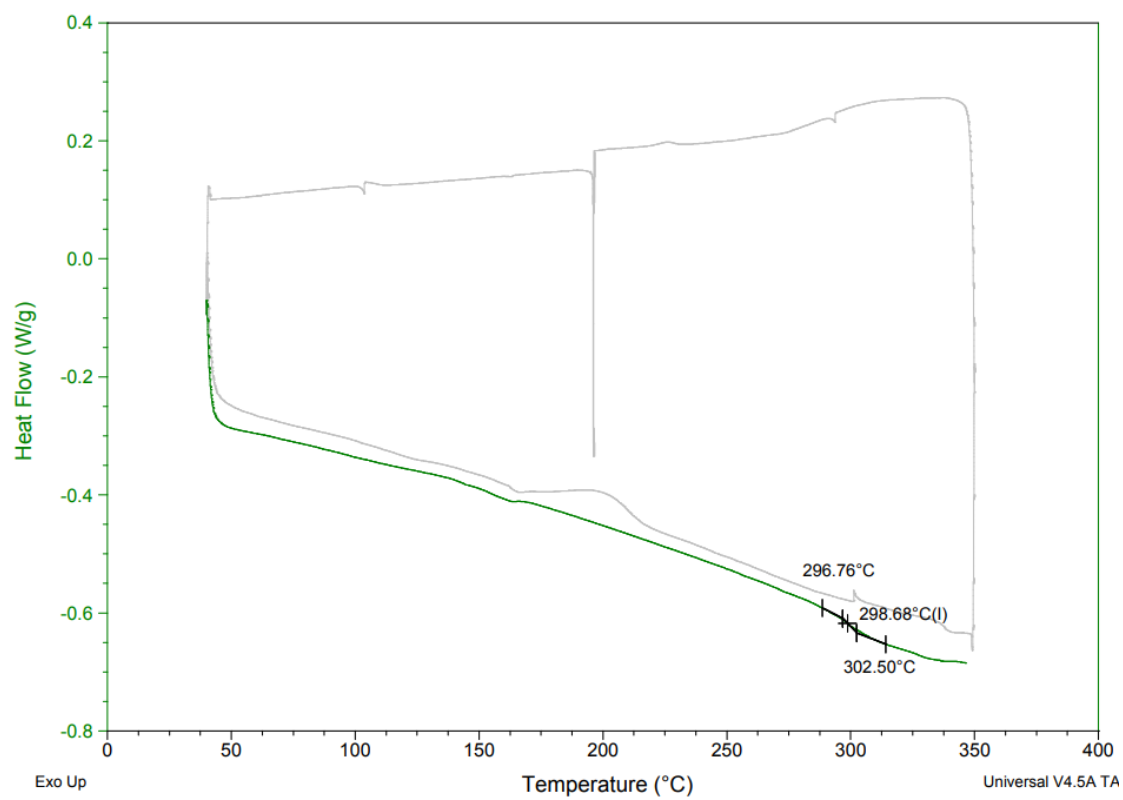


Figure S41. DSC data of the polymer from Table 2, entry 6