

Plasmonic-Assisted Water–Gas Shift Reaction of Gold Particles on TiO₂

Ahmed Khaja Wahab ¹, Kumudu Mudiyansele ^{2,†} and Hicham Idriss ^{3,*}

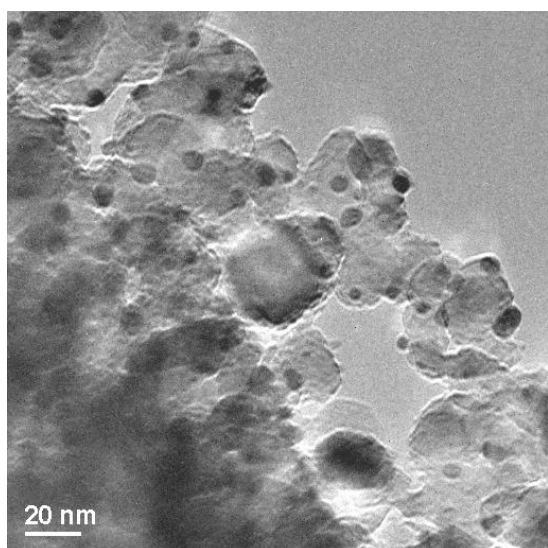
¹ Department of Chemical Engineering, University of Waterloo, Waterloo, ON N2L 3G1, Canada

² Surface Science and Advanced Characterization, SABIC-CRD at King Abdullah University for Science and Technology (KAUST), Thuwal 23955, Saudi Arabia

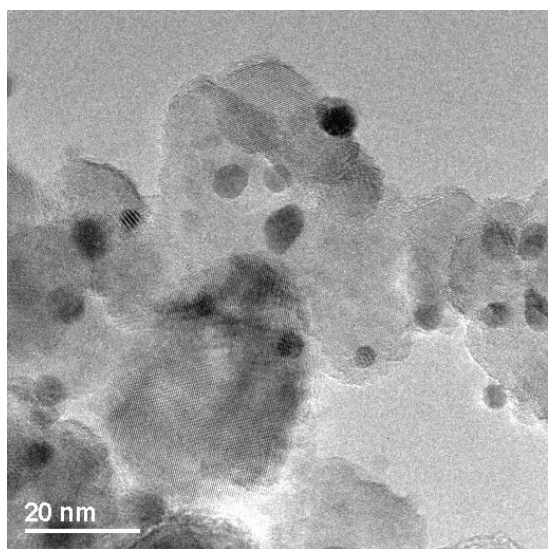
³ Institute of Functional Interfaces, Karlsruhe Institute of Technology (KIT), 76344 Eggenstein-Leopoldshafen, Germany

* Correspondence: hicham.idriss@kit.edu

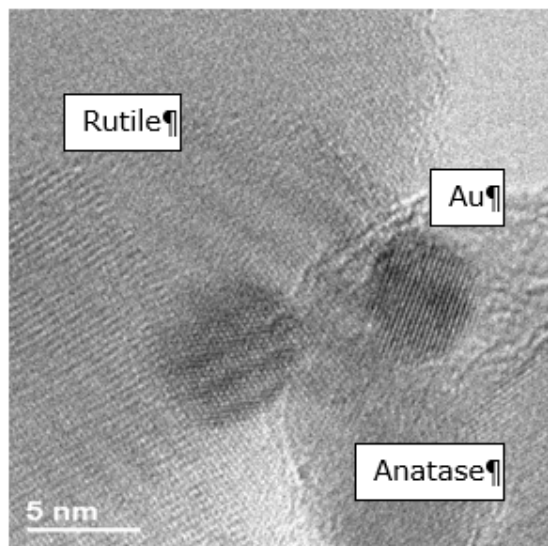
[†] Current address: Albemarle Corporation, Corporate Headquarters, 4250 Congress Street, Suite 900, Charlotte, NC 28209, USA.



A



B



C

Figure S1. Transmission Electron Microscopy images of 8 wt.% Au/TiO₂ P25 with different magnifications.

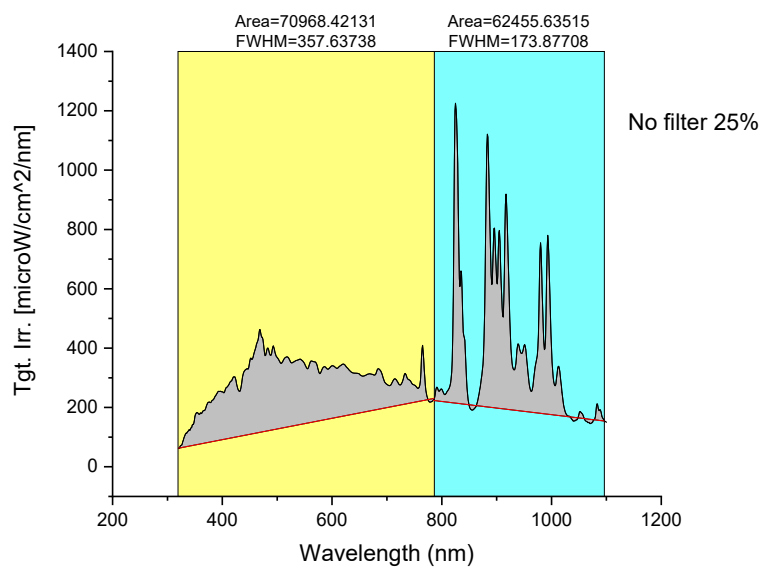


Figure S2. Light flux as a function of wavelengths from 320 to 1100 nm (25% light intensity)

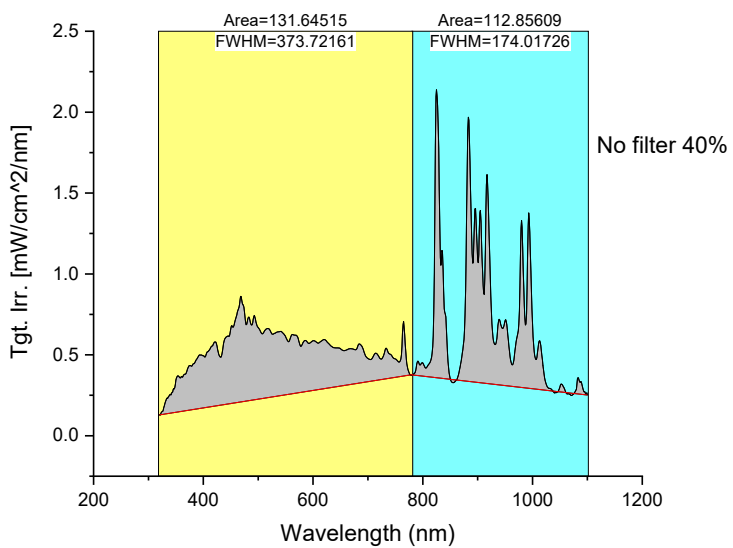


Figure S3. Light flux as a function of wavelengths from 320 to 1100 nm (40% light intensity)

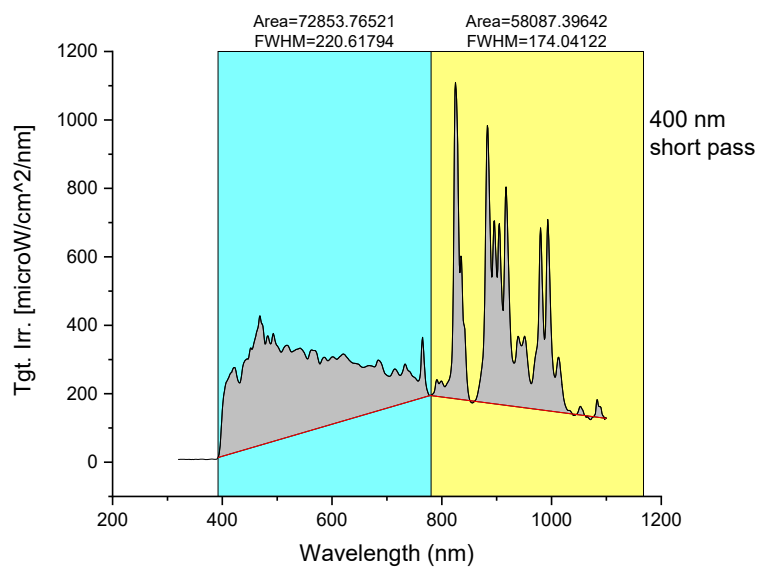


Figure S4. Light flux as a function of wavelengths from 400 to 1100 nm (25% light intensity)

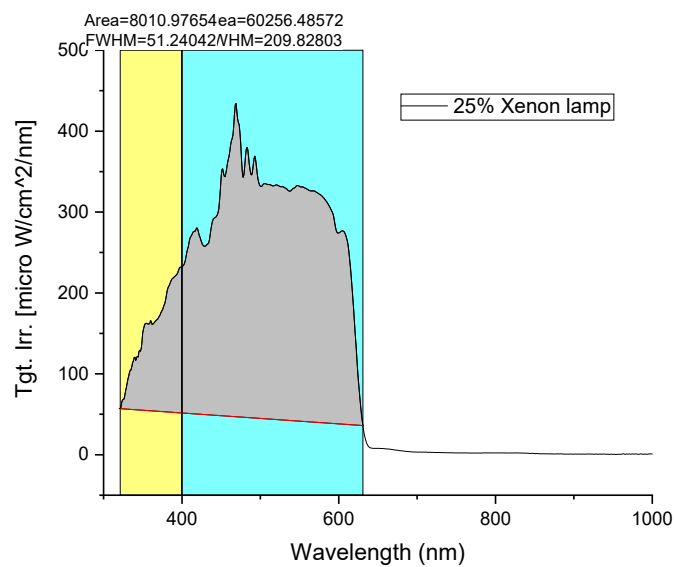


Figure S5. Light flux as a function of wavelengths from 320 to 620 nm (25% light intensity)

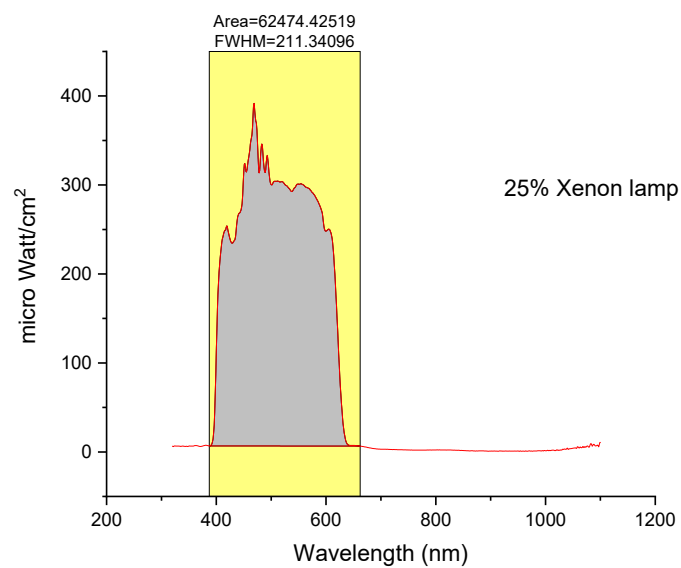


Figure S6. Light flux as a function of wavelengths from 400 to 660 nm (25% light intensity)

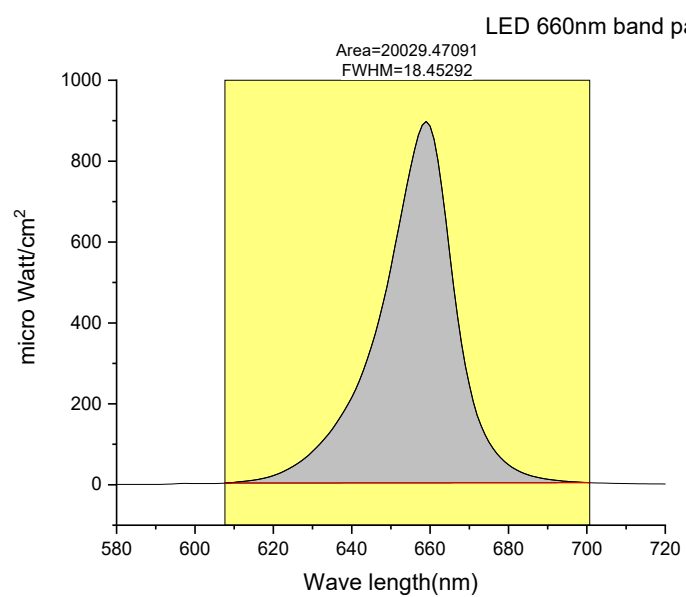


Figure S7. Light flux as a function of wavelengths from 610 to 700 nm (LED with band pass filter at 80% intensity)

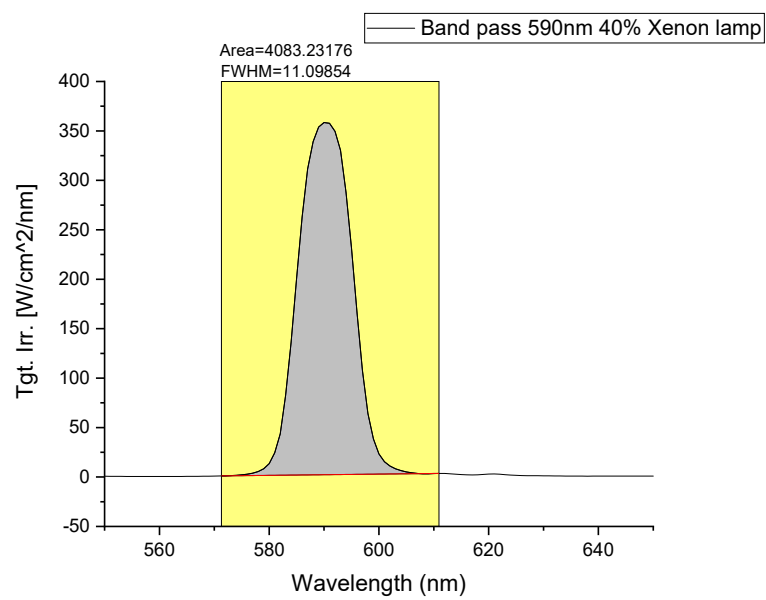


Figure S8. Light flux as a function of wavelengths from 570 to 610 nm (band pass filter 40% light intensity)