

# Impact of hydrothermally prepared support on the catalytic properties of CuCe oxide for the preferential CO oxidation reaction

Christos Papadopoulos <sup>1</sup>, Konstantinos Kappis <sup>1</sup>, Joan Papavasiliou <sup>1,2,\*</sup>, John Vakros <sup>3</sup>, Aspasia Antonelou <sup>2</sup>, Wojciech Gac <sup>4</sup>, Haibin Li <sup>5</sup> and George Avgouropoulos <sup>1,\*</sup>

<sup>1</sup> Department of Materials Science, University of Patras, GR-26504 Patras, Greece; [c.papadopoulos@upatras.gr](mailto:c.papadopoulos@upatras.gr) (C.P.); [k.kappis@upatras.gr](mailto:k.kappis@upatras.gr) (K.K.)

<sup>2</sup> Foundation for Research and Technology-Hellas (FORTH), Institute of Chemical Engineering Sciences (ICE-HT), P.O. Box 1414, GR-26504 Patras, Greece; [jpapav@iceht.forth.gr](mailto:jpapav@iceht.forth.gr) (J.P.); [antoniou@iceht.forth.gr](mailto:antoniou@iceht.forth.gr) (A.A.)

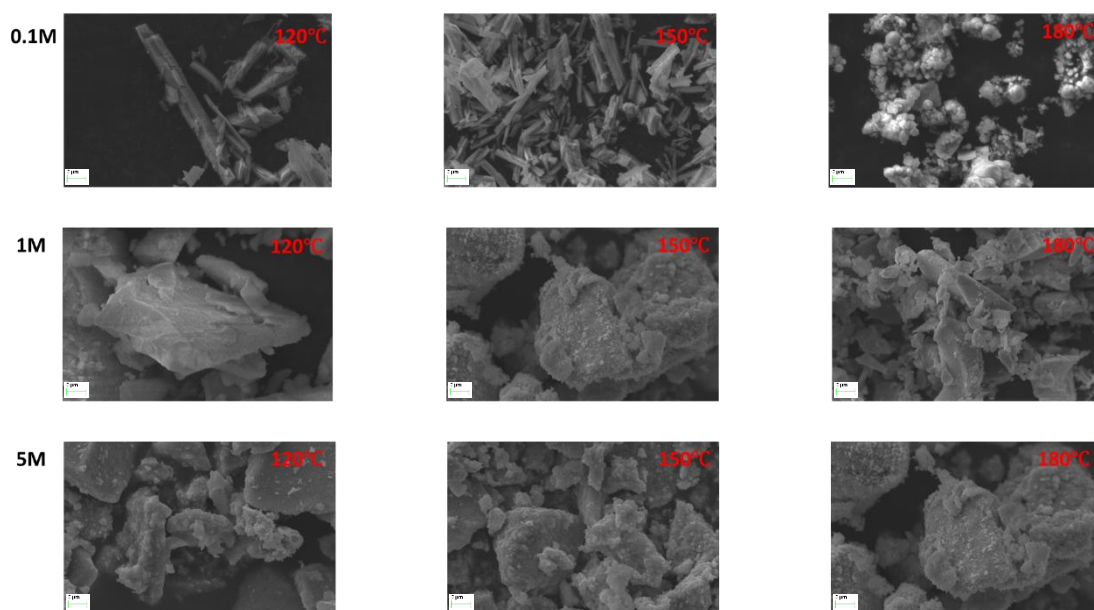
<sup>3</sup> Department of Chemistry, University of Patras, GR-26504 Patras, Greece; [vakros@chemistry.upatras.gr](mailto:vakros@chemistry.upatras.gr) (J.V.)

<sup>4</sup> Faculty of Chemistry, Maria-Curie Skłodowska University, Pl. M. Curie-Skłodowskiej 3, 20-031, Lublin, Poland; [wojtek.gac@poczta.umcs.lublin.pl](mailto:wojtek.gac@poczta.umcs.lublin.pl) (W.G.)

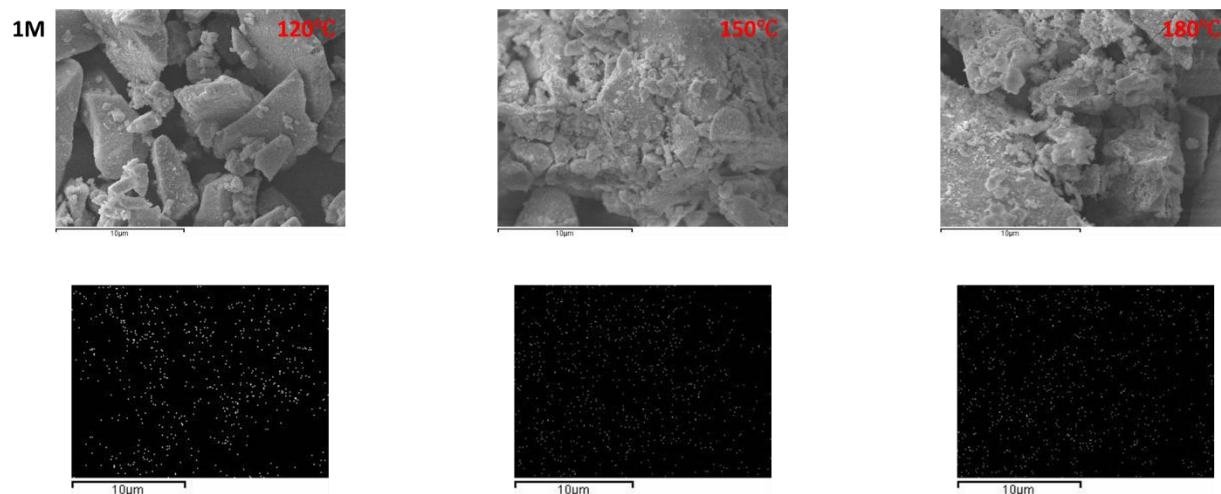
<sup>5</sup> State Key Laboratory of Ocean Engineering, School of Naval Architecture, Ocean & Civil Engineering, Shanghai Jiao Tong University, Shanghai 200240, China; [haibinli@sjtu.edu.cn](mailto:haibinli@sjtu.edu.cn) (H.L.)

\* Correspondence: [geoavg@upatras.gr](mailto:geoavg@upatras.gr) (G.A.); [jpapavas@upatras.gr](mailto:jpapavas@upatras.gr) (J.P.)

## Supplementary materials



**Figure S1.** Representative SEM images of the CuCe oxide catalysts. The scale bar is adjusted to 2.0  $\mu\text{m}$ .



**Figure S2.** SEM/EDX images of the CuCe oxide catalysts. Scale bar is adjusted to 10  $\mu\text{m}$ . The white dots illustrate the dispersion of Cu species onto the ceria support.