

Supplementary Information

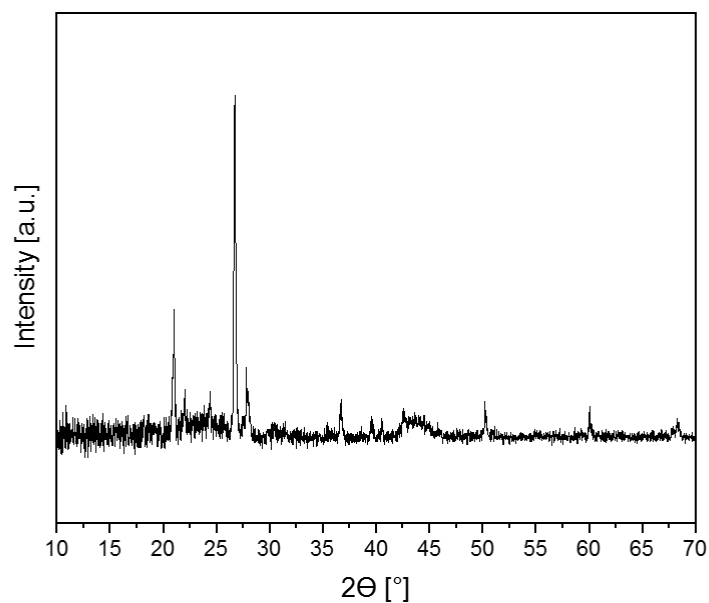


Figure S1. Powder XRD measurement of Ru/C.

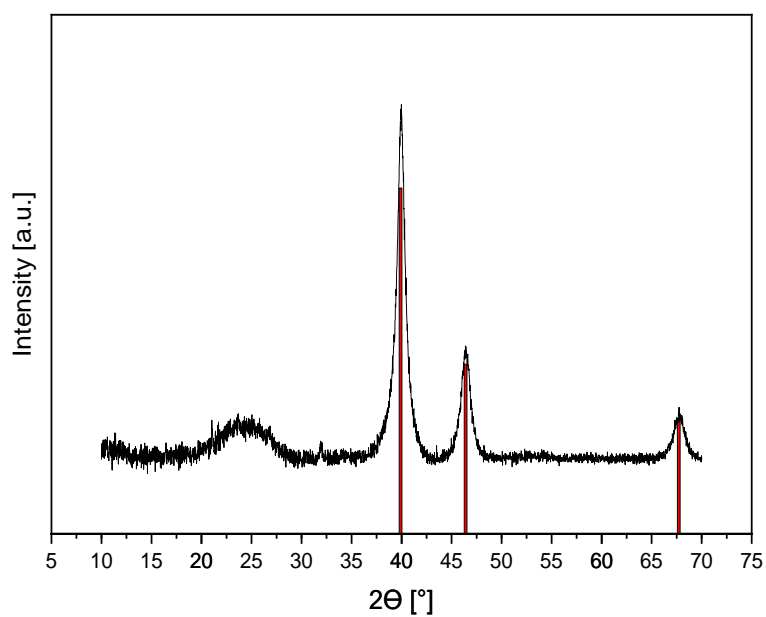


Figure S2. Powder XRD measurement of Pt/C. The red lines indicate the reflexes of cubic Pt as recorded in the Crystallography Open Database (record no. CDO 1011107).

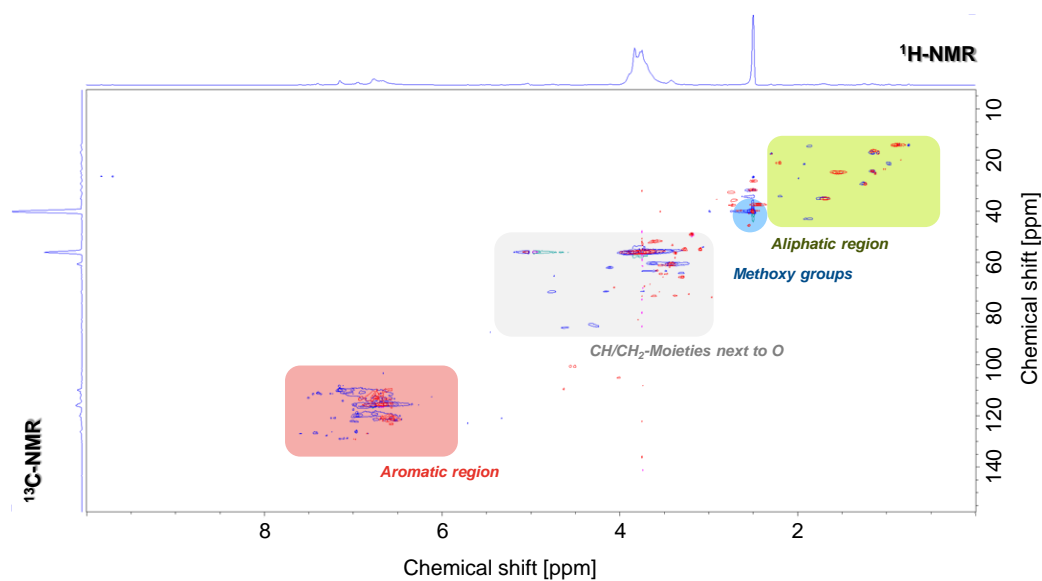


Figure S3. Overlay plot of the HSQC NMR-spectra of the parent Kraft-lignin (blue and green) and the lignin-oil (red and pink) obtained by the Pt/C catalyzed hydrogenolysis of Kraft-lignin in methanol at supercritical conditions (30 bar initial hydrogen pressure, 131 bar pressure at 250°C).

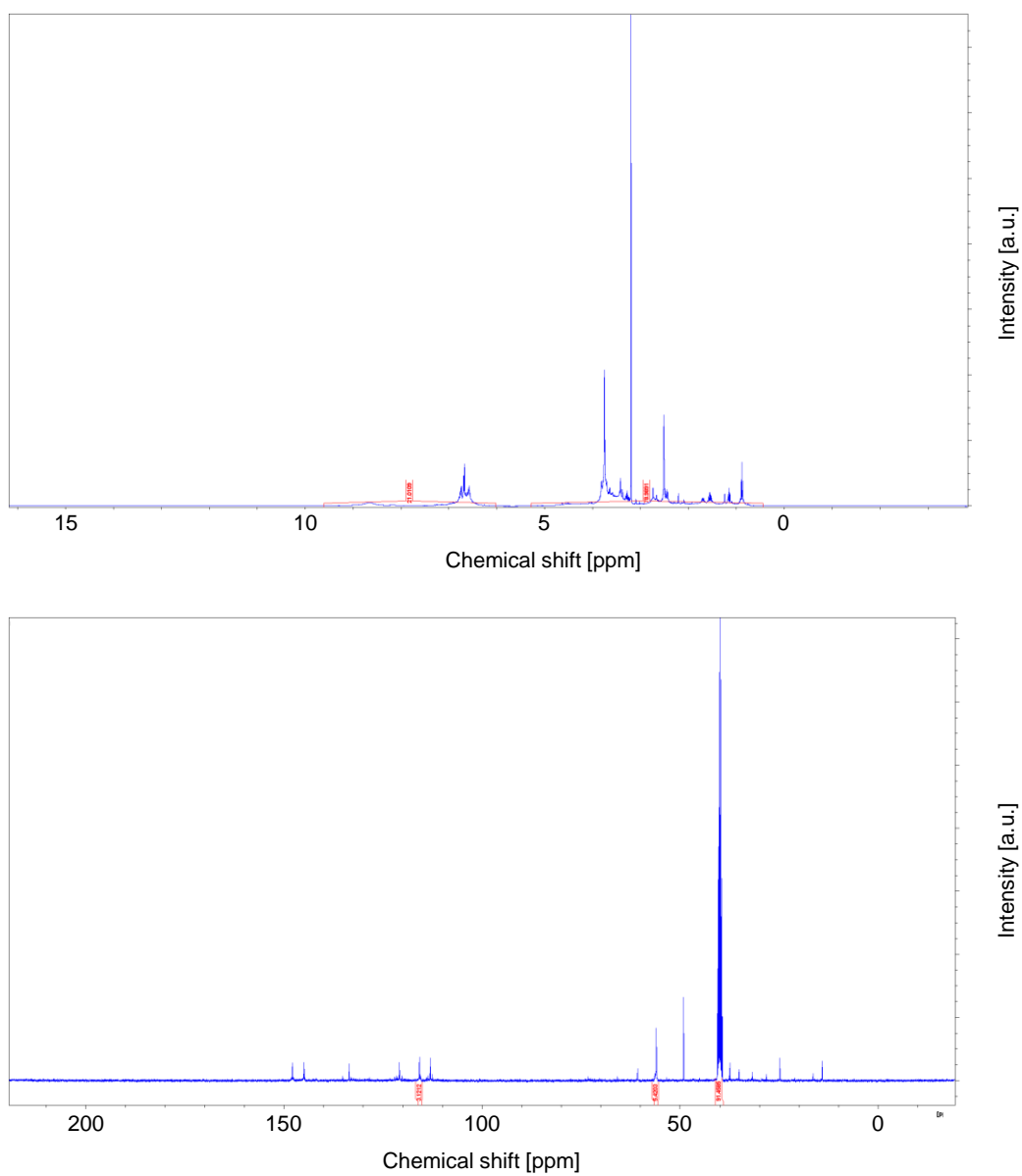


Figure S4. ^1H and $^{13}\text{C}\{^1\text{H}\}$ NMR spectrum of lignin-oil obtained by catalytic hydrogenolysis over Ru/C (top and bottom, respectively).

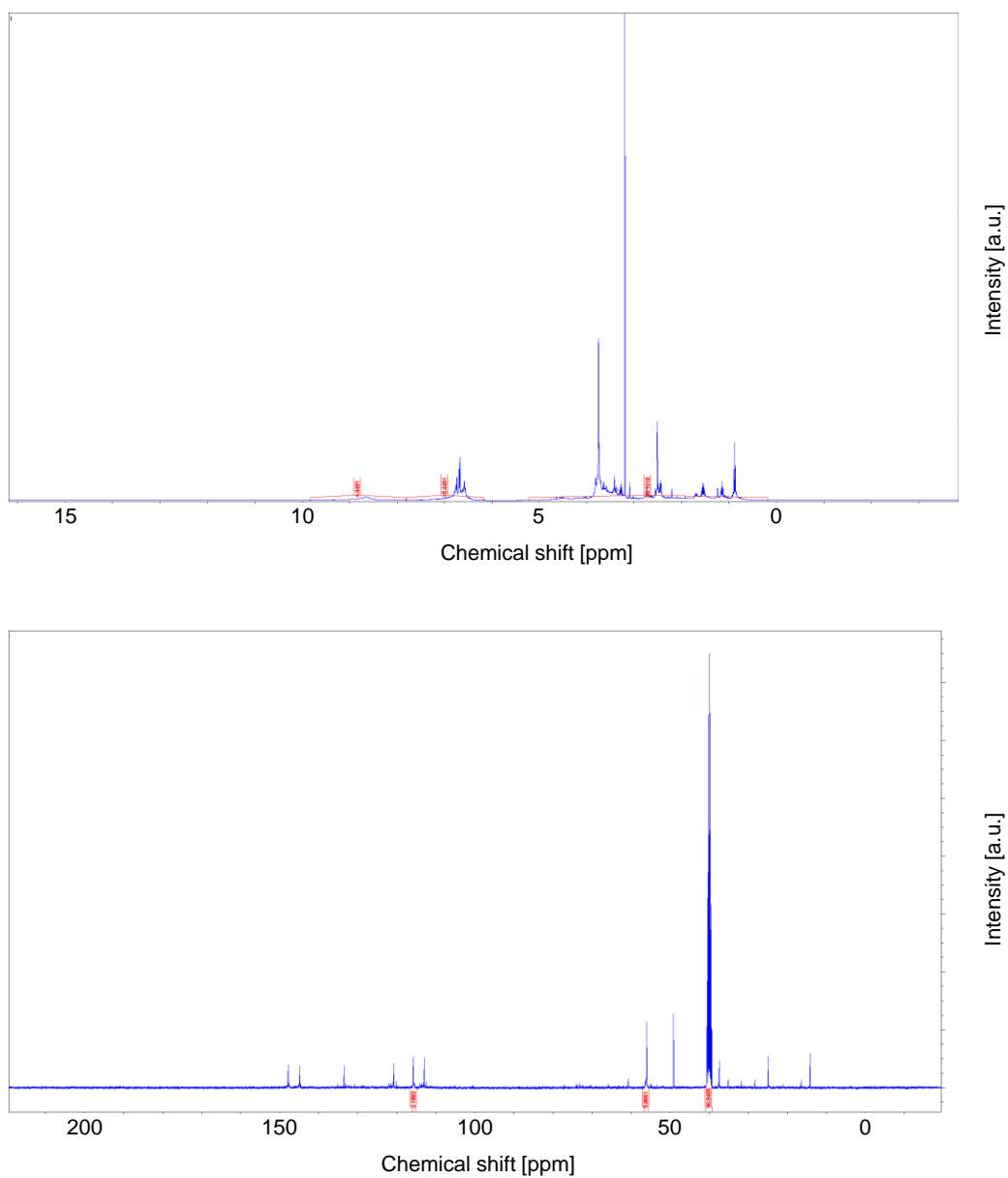


Figure S5. ^1H and $^{13}\text{C}\{^1\text{H}\}$ NMR spectrum of lignin-oil obtained by catalytic hydrogenolysis over Pt/C (top and bottom, respectively).