

Supplementary Information

**Agricultural Monitoring in Northeastern Ontario, Canada,
Using Multi-Temporal Polarimetric RADARSAT-2 Data.
Remote Sensing, 2014, 6, 2343–2371**

Jeffrey W. Cable ¹, John M. Kovacs ^{1,*}, Xianfeng Jiao ¹ and Jiali Shang ²

¹ Department of Geography, Nipissing University, 100 College Drive, North Bay, ON P1B 8L7, Canada; E-Mails: j.w.cable@hotmail.com (J.W.C.); xianfeng.jiao@nrcan-rncan.gc.ca (X.J.)

² Science and Technology Branch, Agriculture and Agri-Food Canada, 960 Carling Ave, Ottawa, ON K1A 0C6, Canada; E-Mail: jiali.shang@agr.gc.ca

* Author to whom correspondence should be addressed; E-Mail: johnmk@nipissingu.ca;
Tel.: +1-705-474-3450 (ext. 4336); Fax: +1-705-474-1947.

Received: 26 December 2013; in revised form: 21 February 2014 / Accepted: 3 March 2014 /

Published: 17 March 2014

Supplementary A—Backscatter Intensities of Each Incidence Angle and Polarization

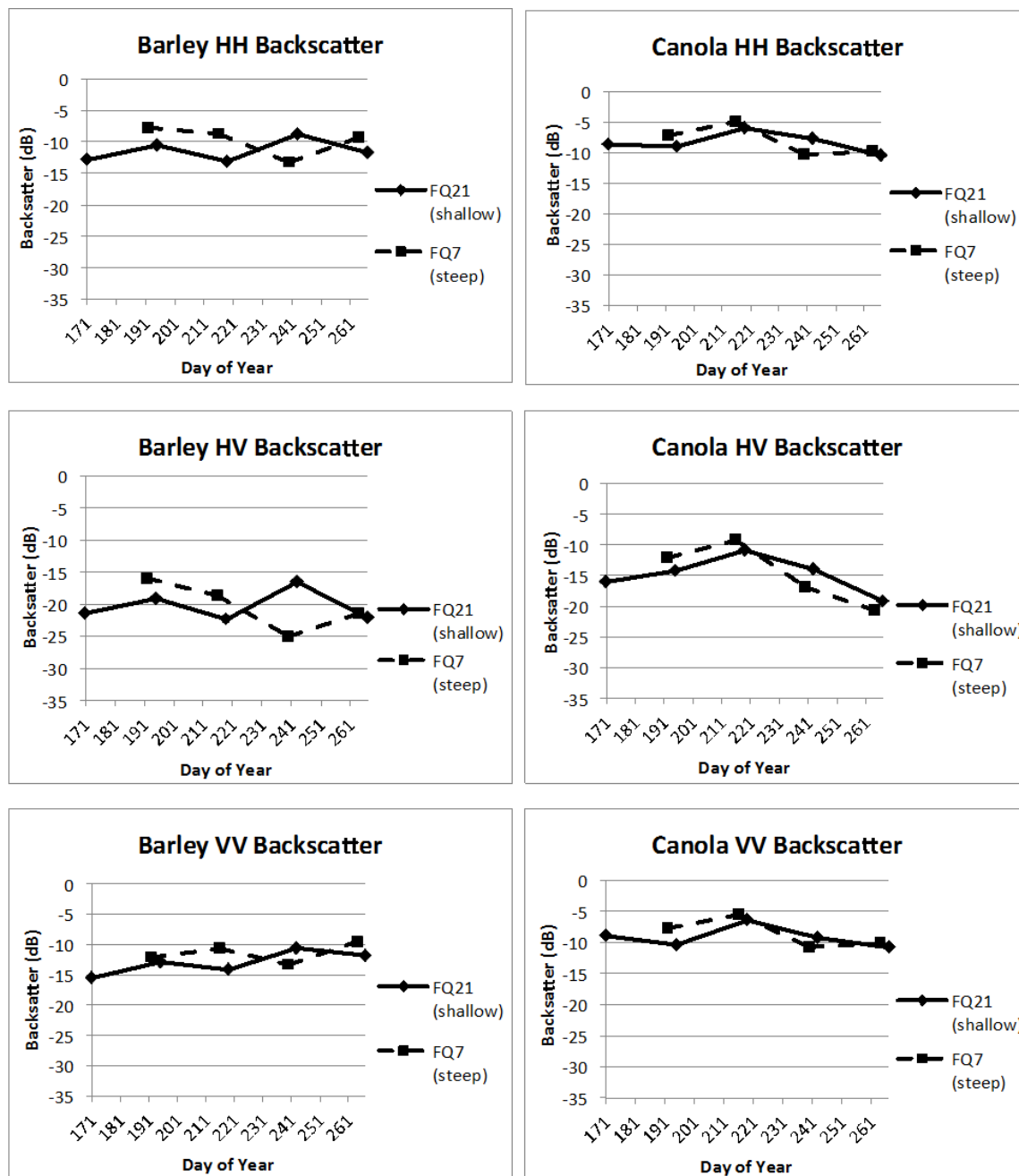
Figure A1. HH (Top); HV (Middle); and VV (Bottom) backscatter intensities for barley (Left) and canola (Right).

Figure A2. HH (Top); HV (Middle); and VV (Bottom) backscatter intensities for oat (Left) and soybean (Right).

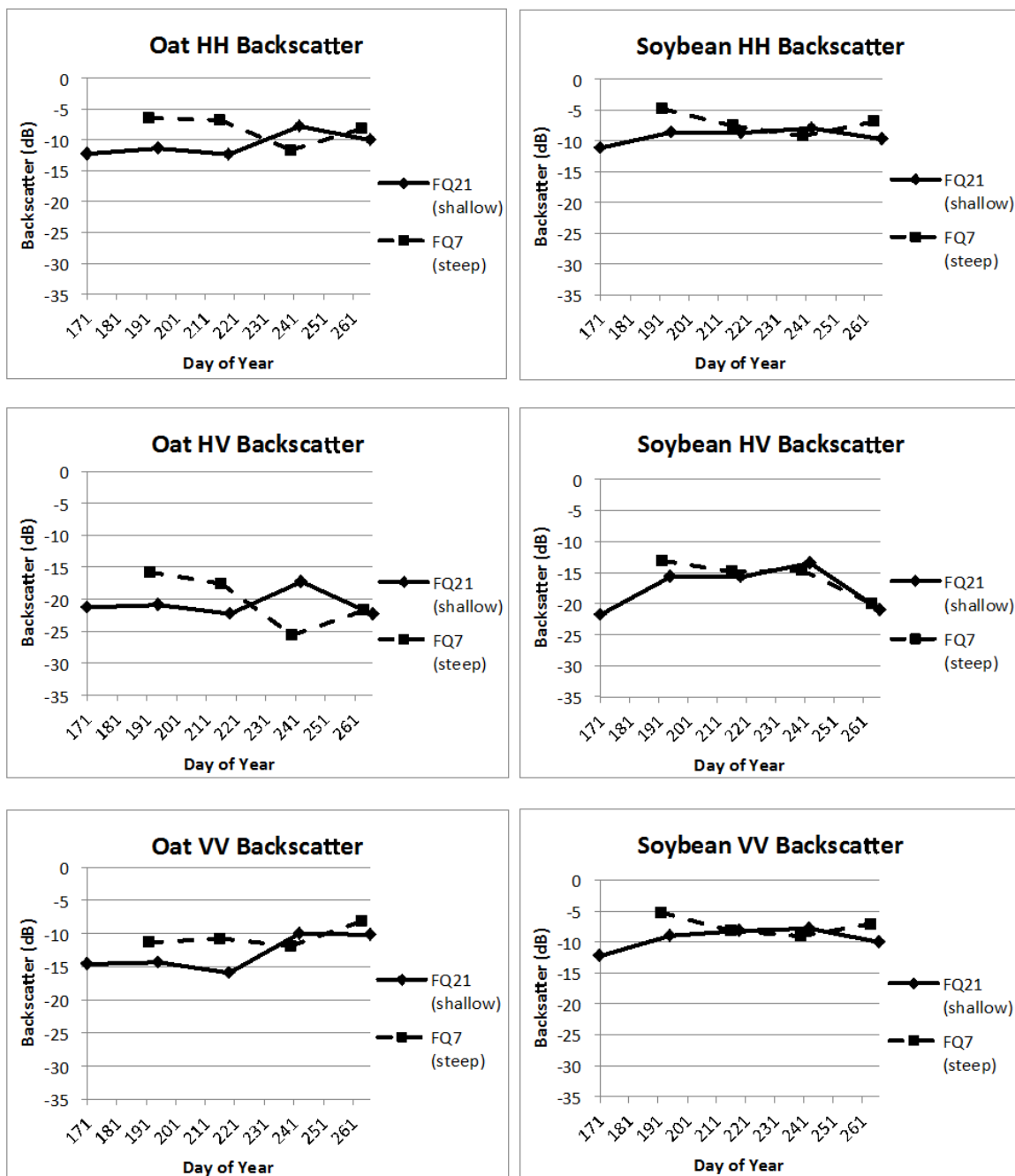
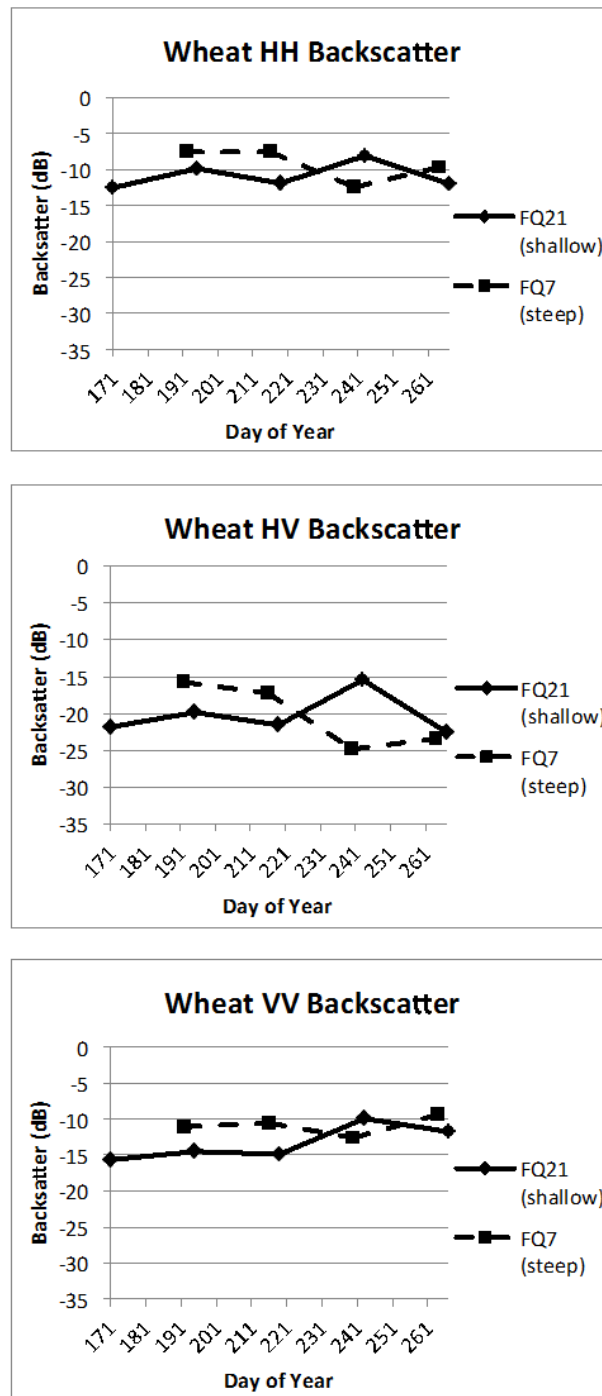


Figure A3. HH (Top); HV (Middle); and VV (Bottom) backscatter intensities for wheat.

Supplementary B—Polarization Response Plots

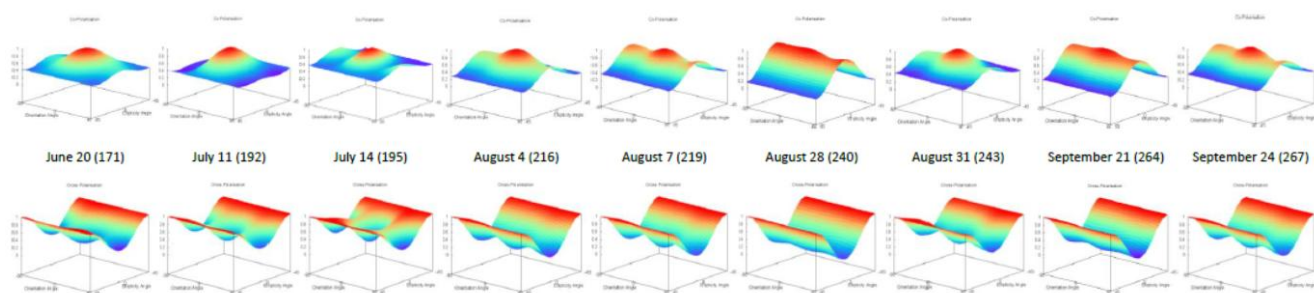
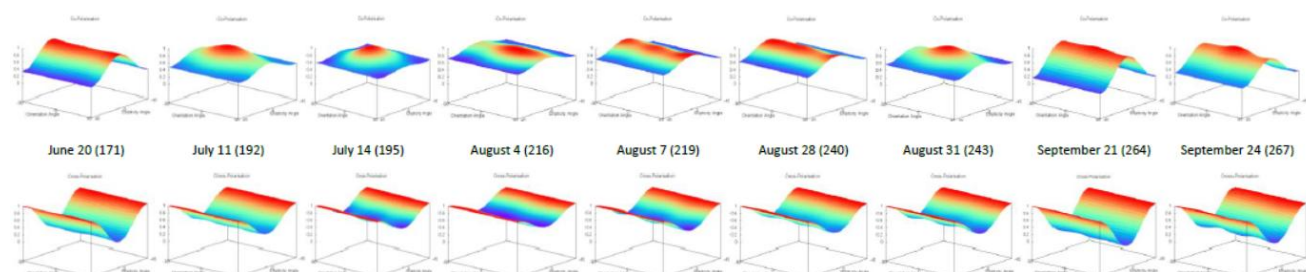
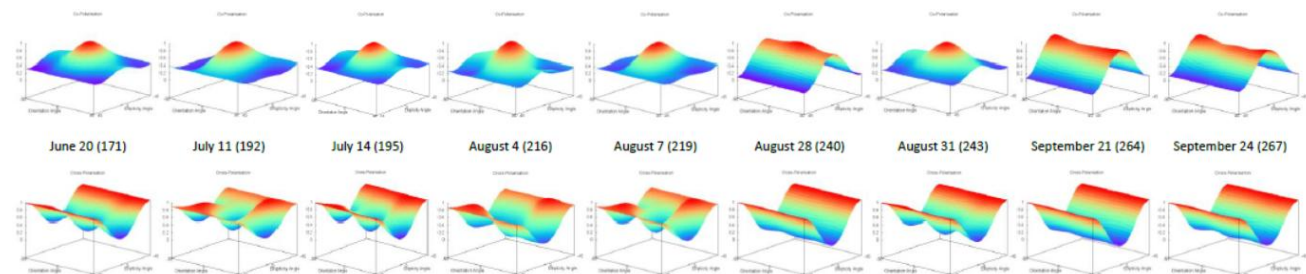
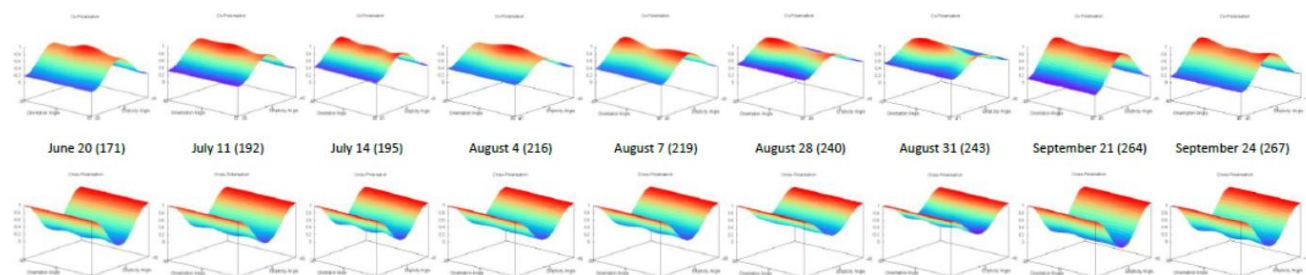
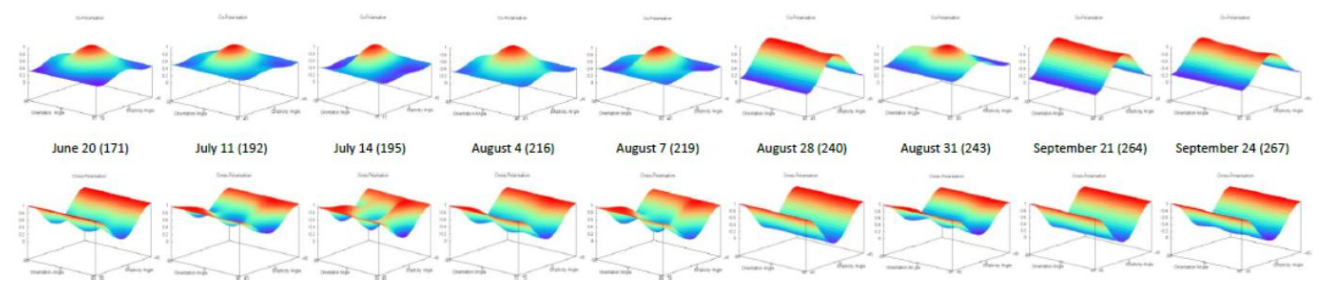
Figure B1. Barley co-polarization (**Top**) and cross-polarization (**Bottom**) signatures.**Figure B2.** Canola co-polarization (**Top**) and cross-polarization (**Bottom**) signatures.**Figure B3.** Oat co-polarization (**Top**) and cross-polarization (**Bottom**) signatures.**Figure B4.** Soybean co-polarization (**Top**) and cross-polarization (**Bottom**) signatures.

Figure B5. Wheat co-polarization (**Top**) and cross-polarization (**Bottom**) signatures.



Supplementary C—Cloude-Pottier H/ α Decomposition Plots

Figure C1. Barley cloude-pottier decompositions for (a) 20 June; (b) 11 July; and (c) 14 July.

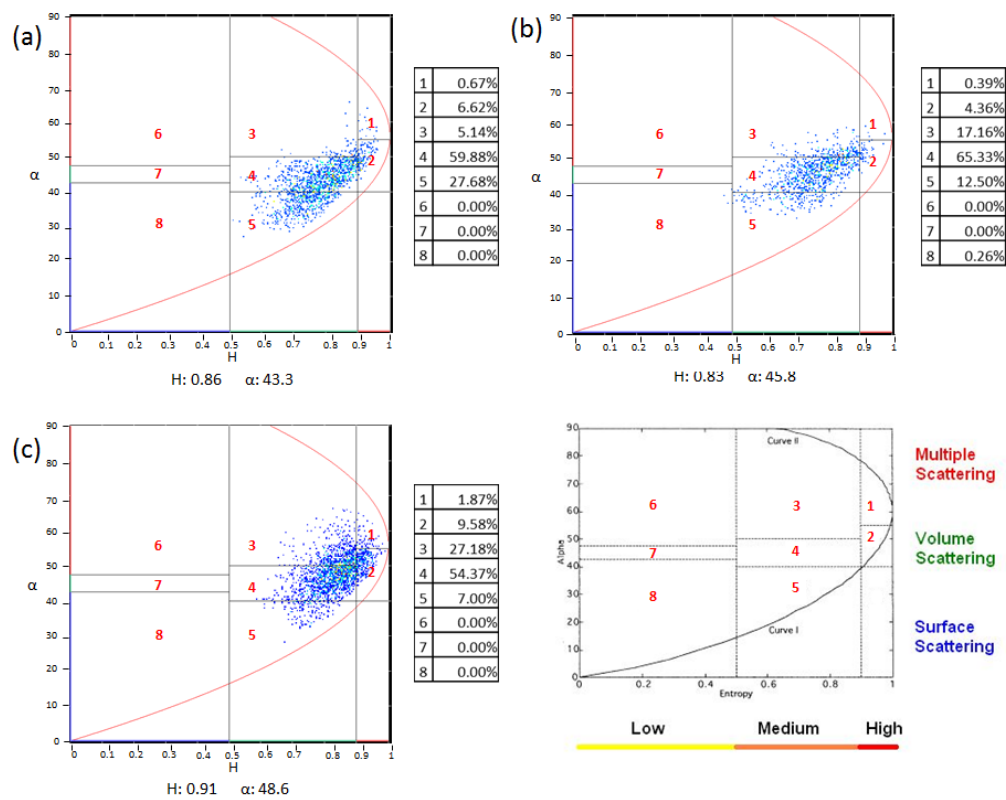


Figure C2. Barley cloude-pottier decompositions for (a) 4 August; (b) 7 August; and (c) 28 August.

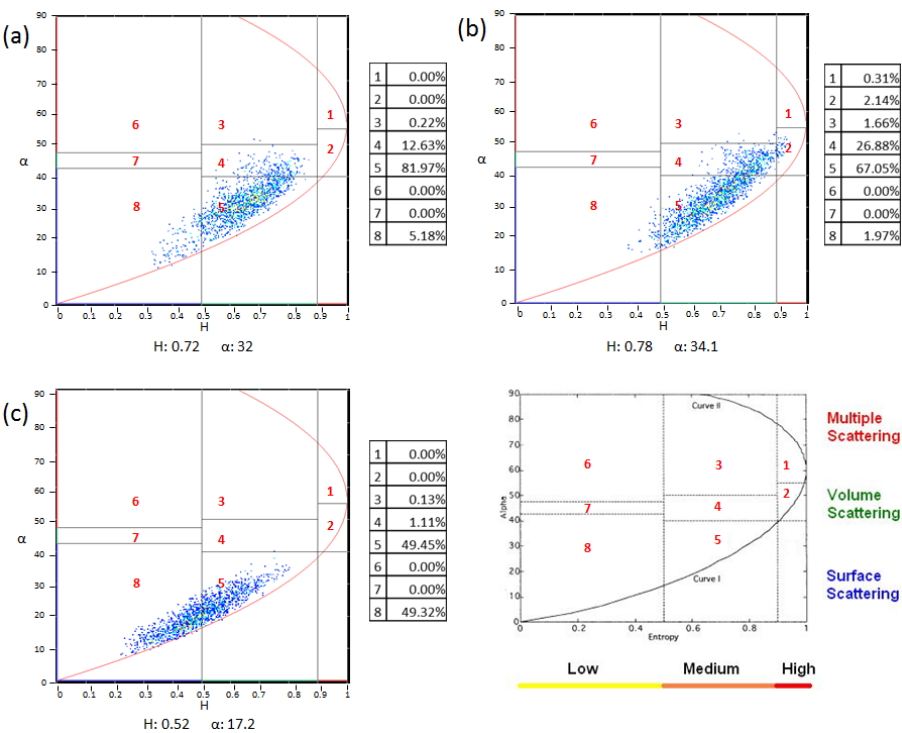


Figure C3. Barley cloude-pottier decompositions for (a) 31 August; (b) 21 September; and (c) 24 September.

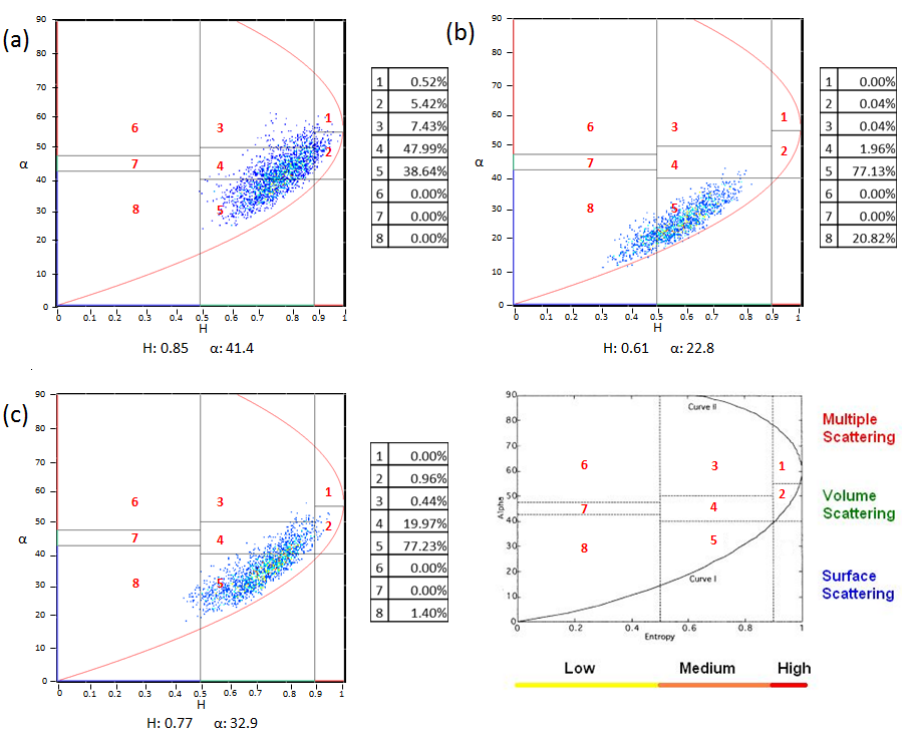


Figure C4. Canola cloude-pottier decompositions for (a) 20 June; (b) 11 July; and (c) 14 July.

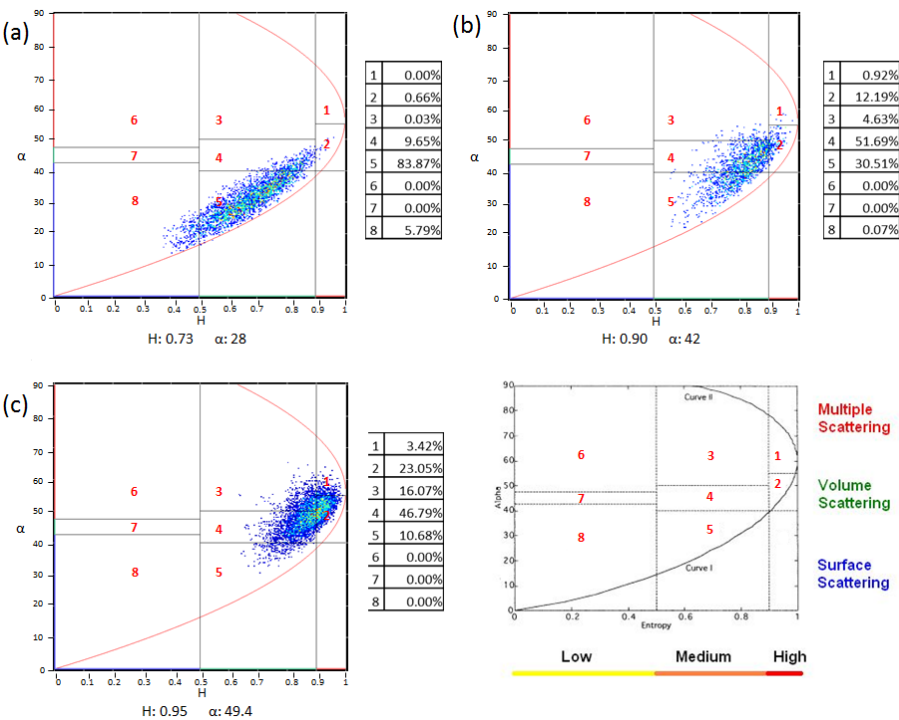


Figure C5. Canola cloude-pottier decompositions for (a) 4 August; (b) 7 August; and (c) 28 August.

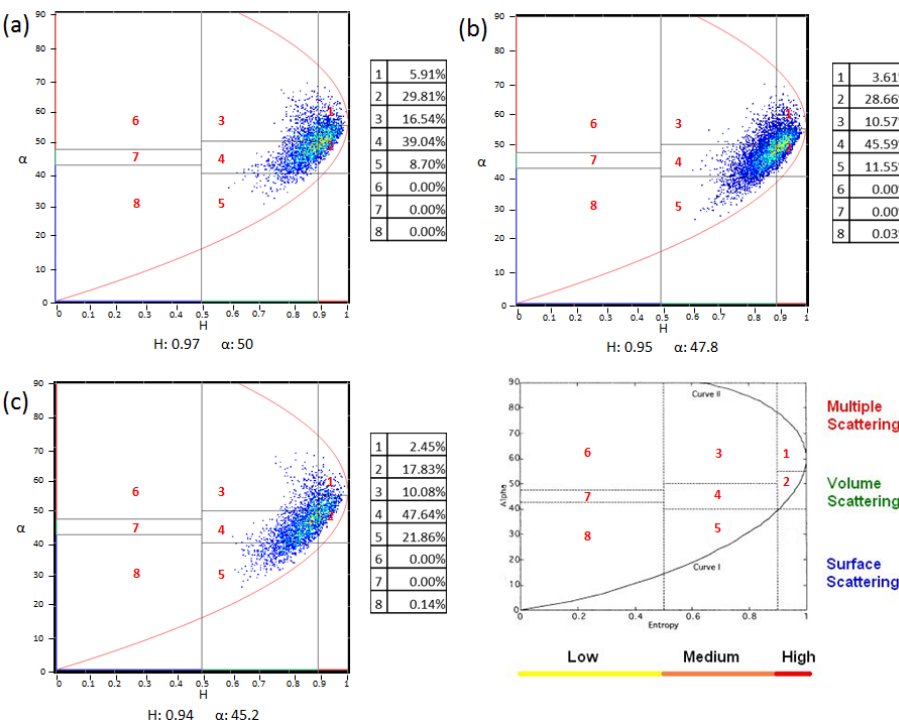


Figure C6. Canola cloud-e-pottier decompositions for (a) 31 August; (b) 21 September; and (c) 24 September.

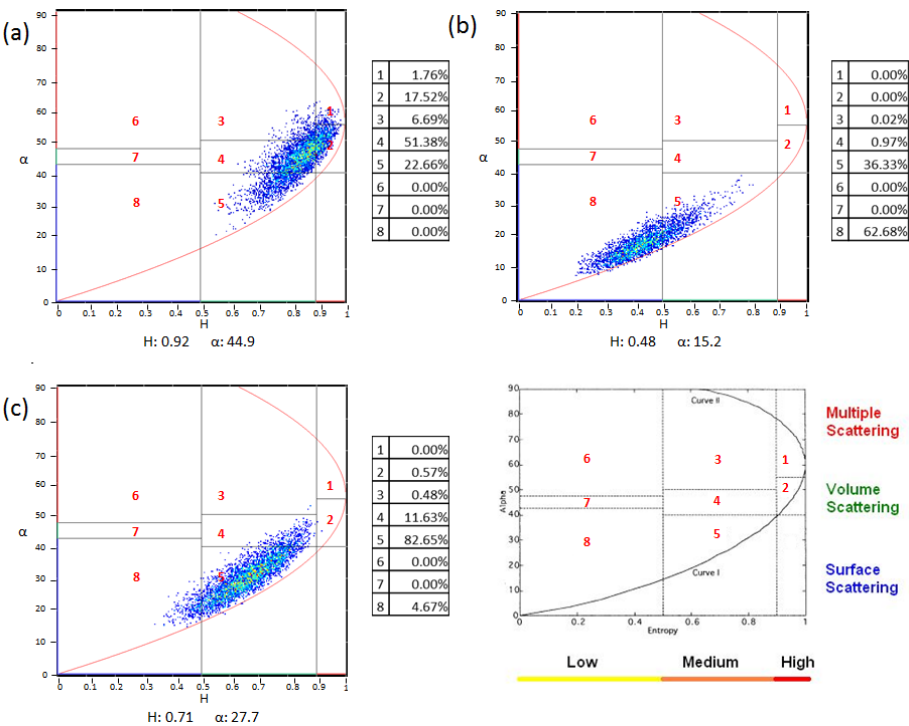


Figure C7. Oat cloud-e-pottier decompositions for (a) 20 June; (b) 11 July; and (c) 14 July.

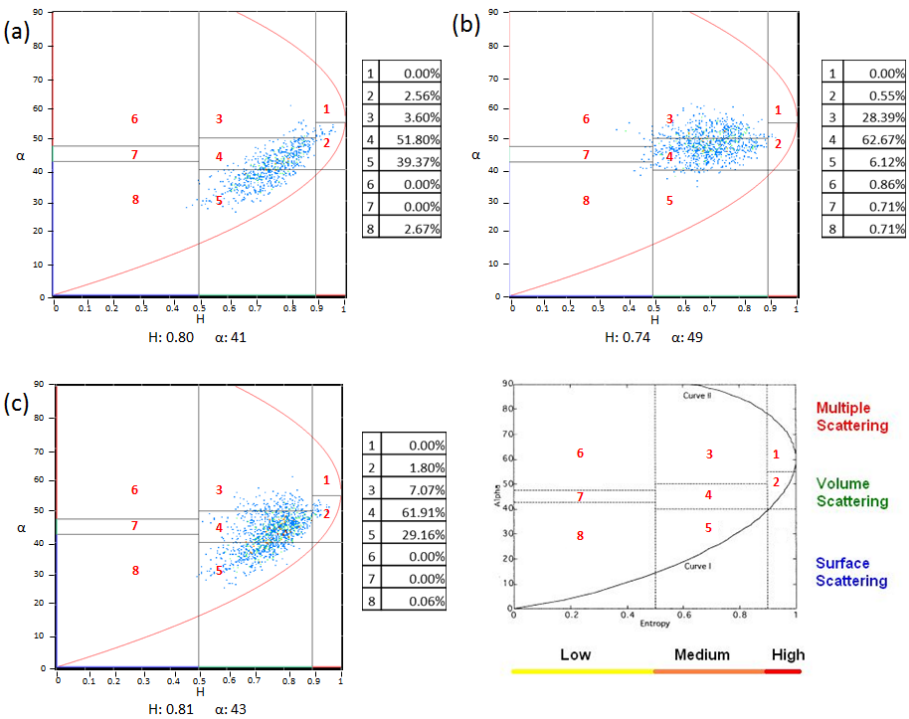


Figure C8. Oat cloud-pottier decompositions for (a) 4 August; (b) 7 August; and (c) 28 August.

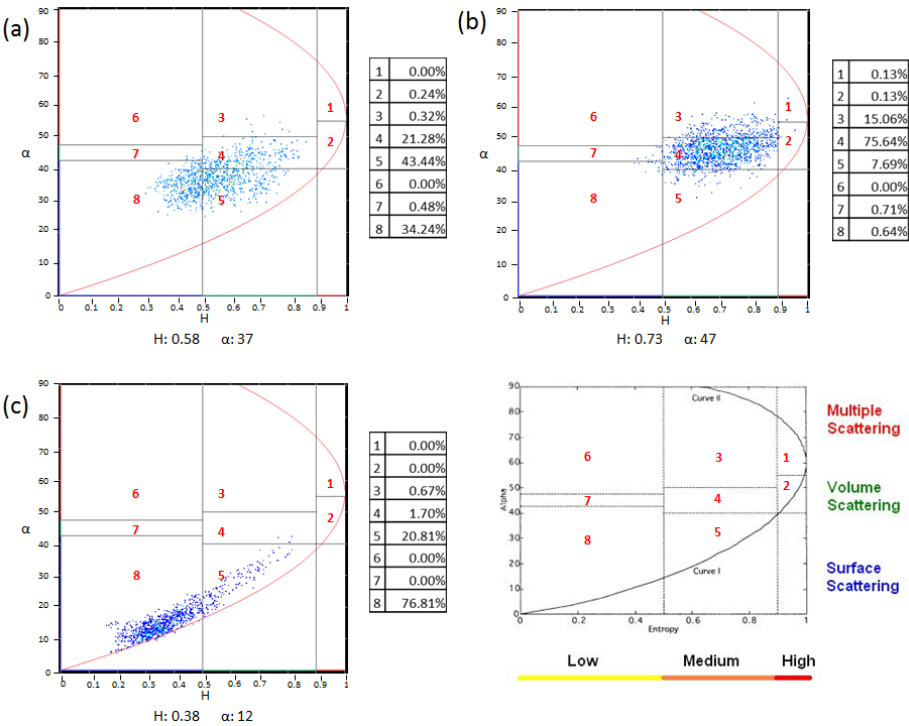


Figure C9. Oat cloud-pottier decompositions for (a) 31 August; (b) 21 September; and (c) 24 September.

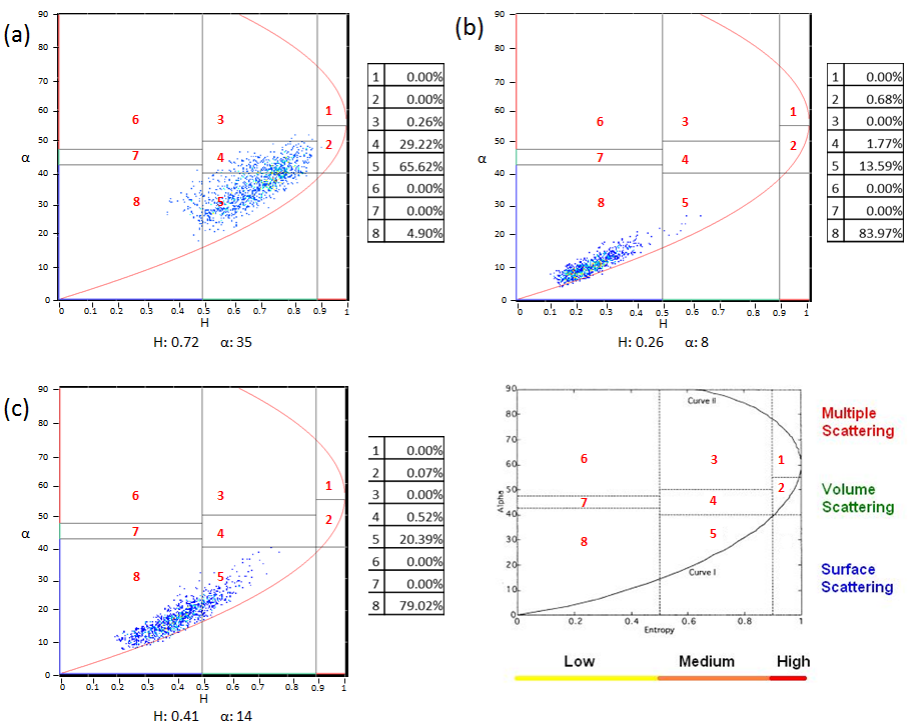


Figure C10. Soybean cloude-pottier decompositions for (a) 20 June; (b) 11 July; and (c) 14 July.

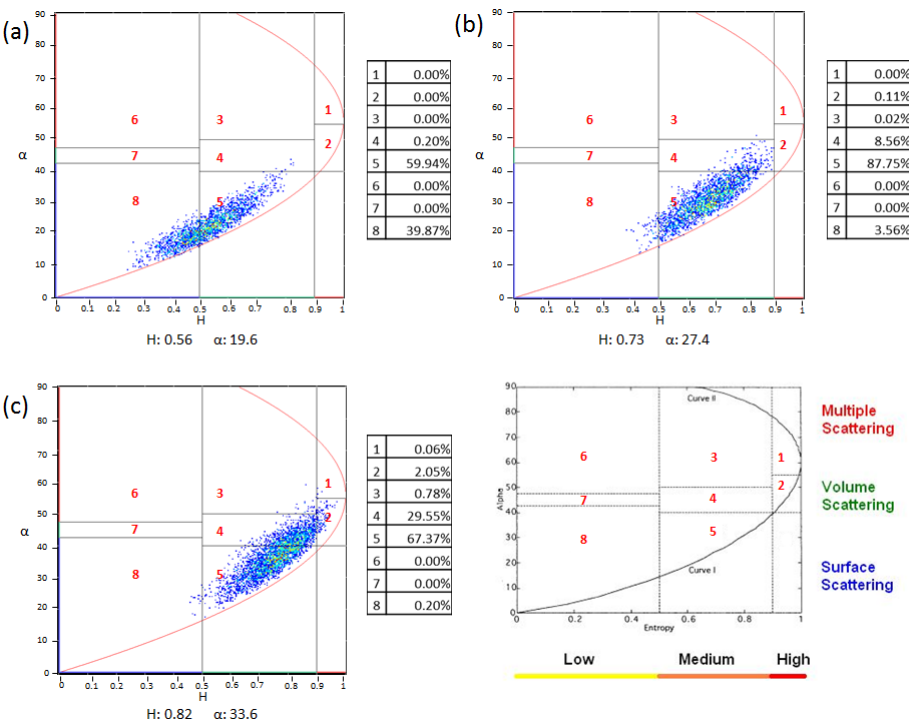


Figure C11. Soybean cloude-pottier decompositions for (a) 4 August; (b) 7 August; and (c) 28 August.

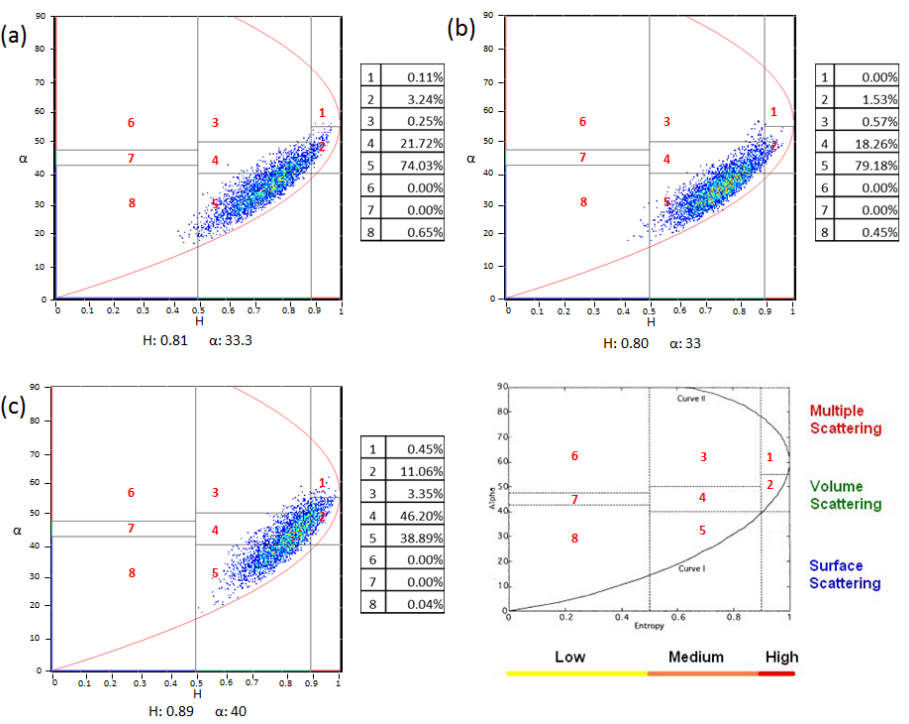


Figure C12. Soybean cloudé-pottier decompositions for (a) 31 August; (b) 21 September; and (c) 24 September.

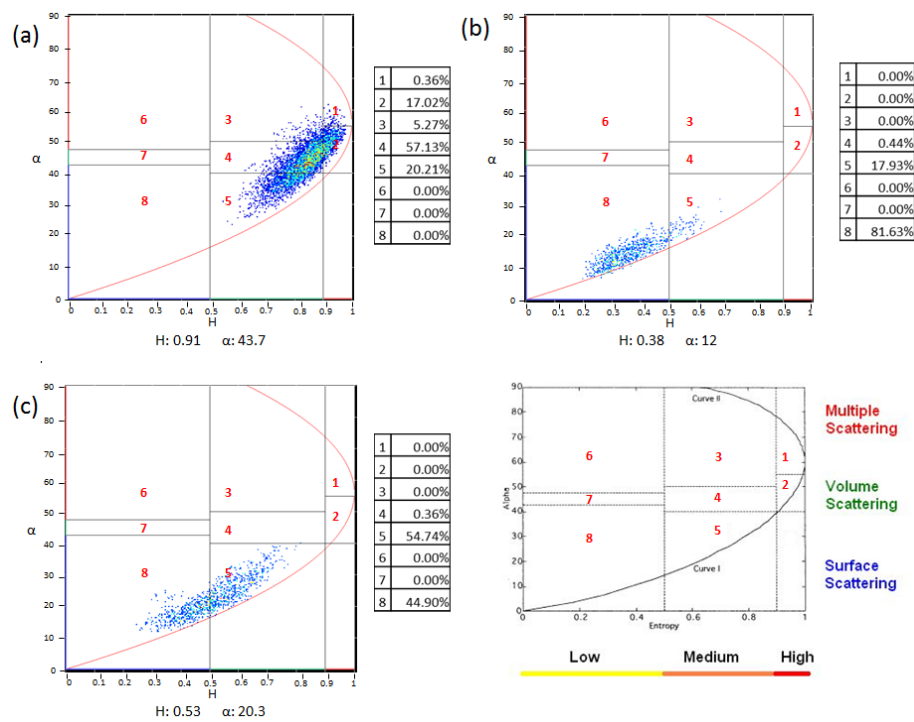


Figure C13. Wheat cloudé-pottier decompositions for (a) 20 June; (b) 11 July; and (c) 14 July.

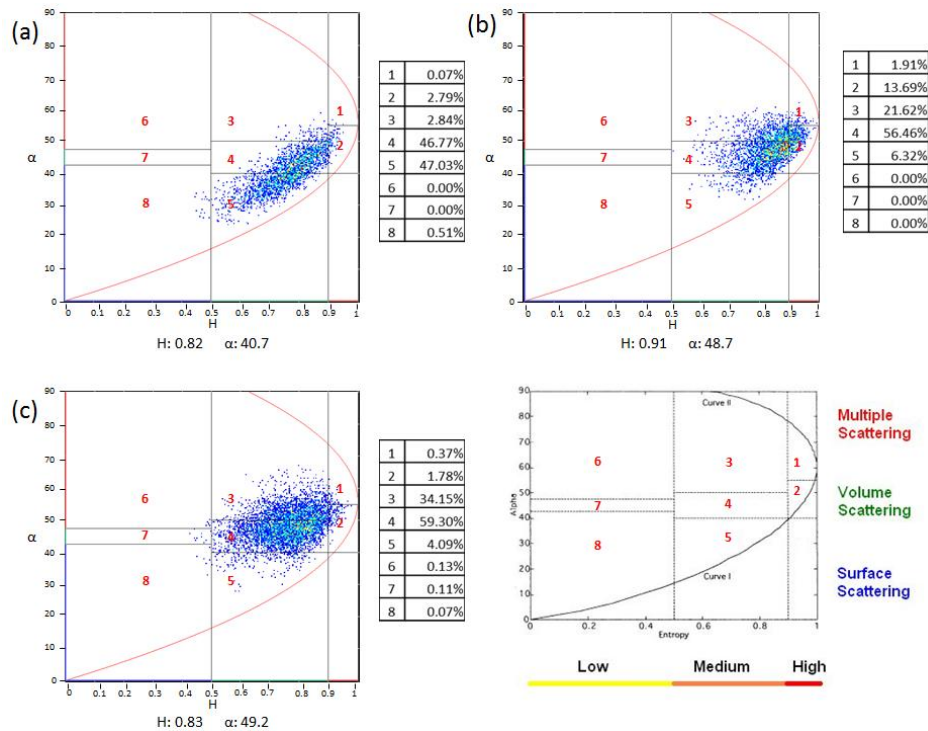


Figure C14. Wheat cloude-pottier decompositions for (a) 4 August; (b) 7 August; and (c) 28 August.

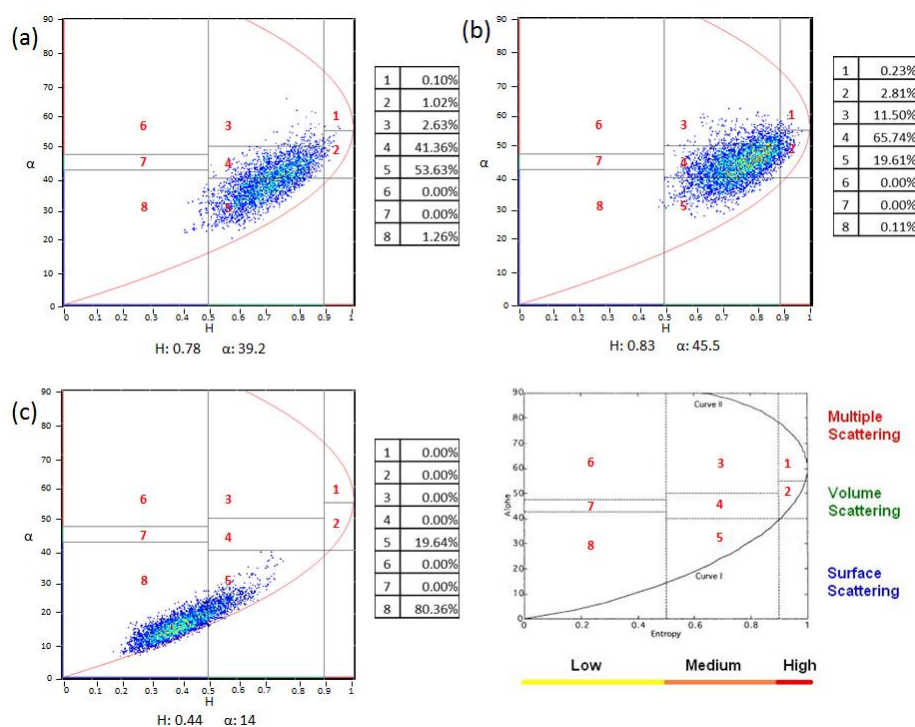


Figure C15. Wheat cloude-pottier decompositions for (a) 31 August; (b) 21 September; and (c) 24 September.

