

Supplementary Information

Daily Area of Snow Melt Onset on Arctic Sea Ice from Passive Microwave Satellite Observations 1979–2012. *Remote Sensing*, 2014, 6, 11283–11314

Angela C. Bliss * and Mark R. Anderson

Earth and Atmospheric Sciences, University of Nebraska-Lincoln, 214 Bessey Hall Lincoln, NE 68588-0340, USA; E-Mail: mra@unl.edu

* Author to whom correspondence should be addressed; E-Mail: acbliss3@huskers.unl.edu; Tel.: +1-402-472-2663; Fax: +1-402-472-4917.

Received: 6 August 2014; in revised form: 6 October 2014 / Accepted: 24 October 2014 /

Published: 13 November 2014

Figure S1. Arctic Ocean 3-day running mean of daily MO area for (a) SMMR years, (b) early SSM/I years, and (c) late SSM/I and SSMIS years.

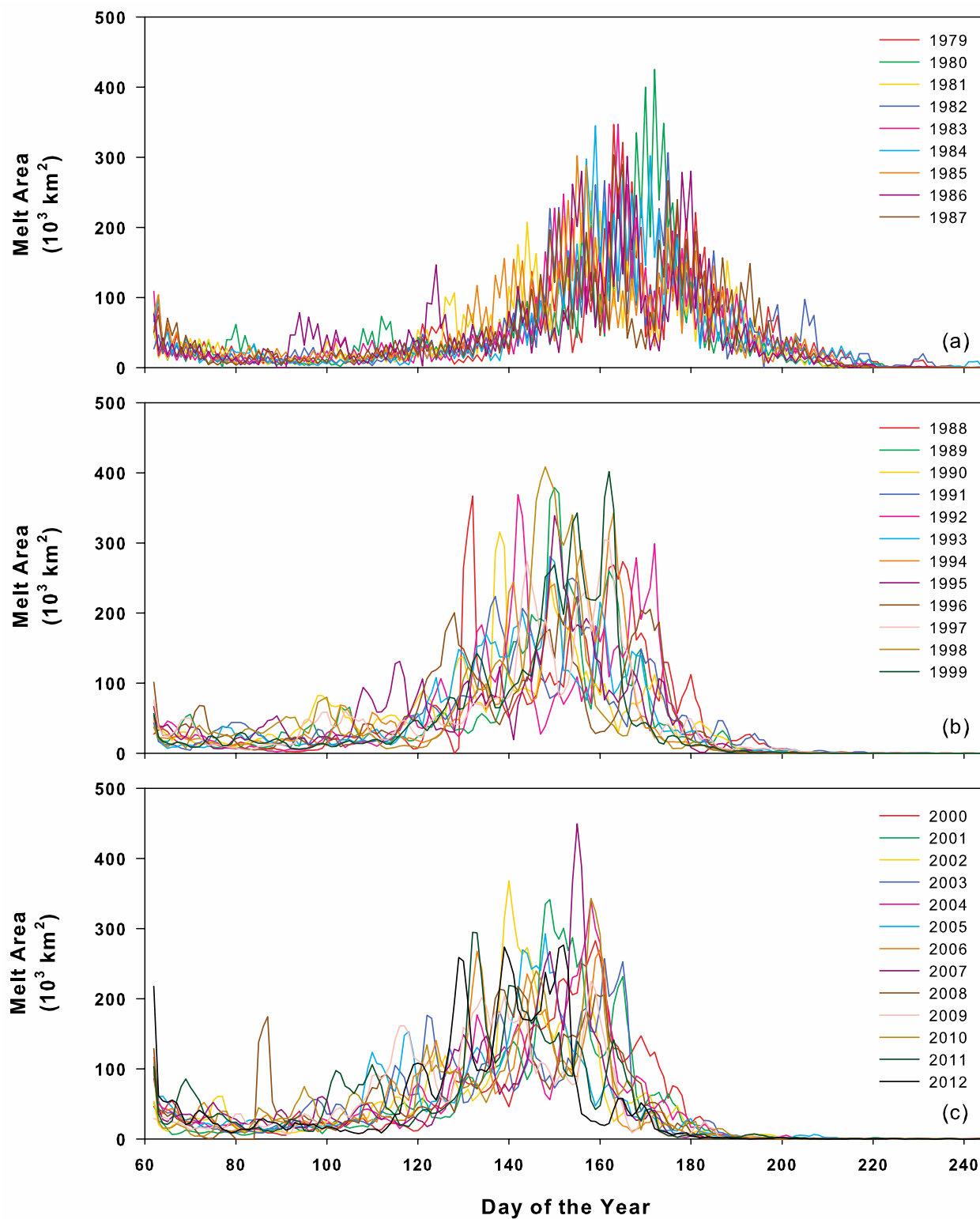


Figure S2. Barents Sea 3-day running mean of daily MO area for (a) SMMR years, (b) early SSM/I years, and (c) late SSM/I and SSMIS years.

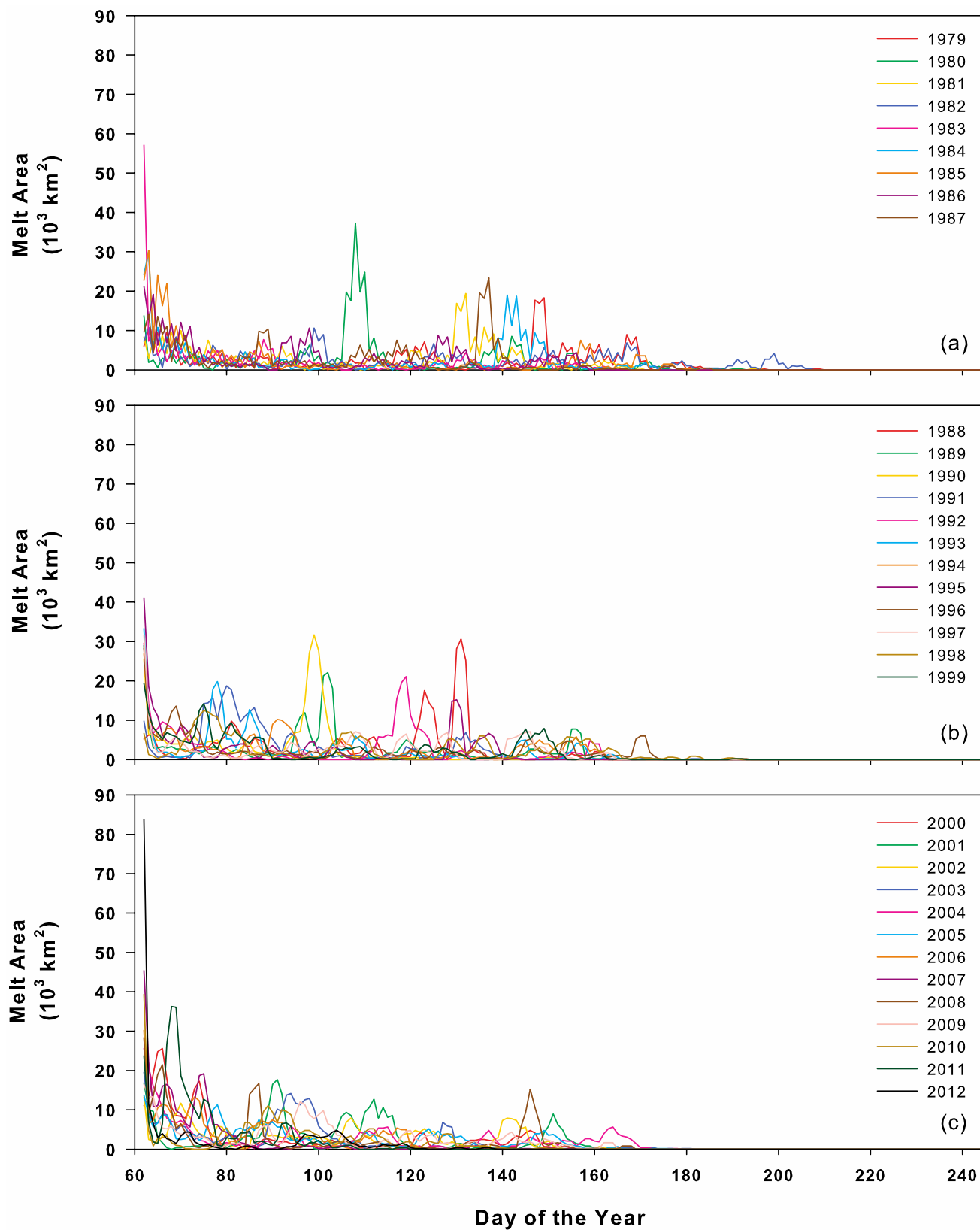


Figure S3. Laptev Sea 3-day running mean of daily MO area for (a) SMMR years, (b) early SSM/I years, and (c) late SSM/I and SSMIS years.

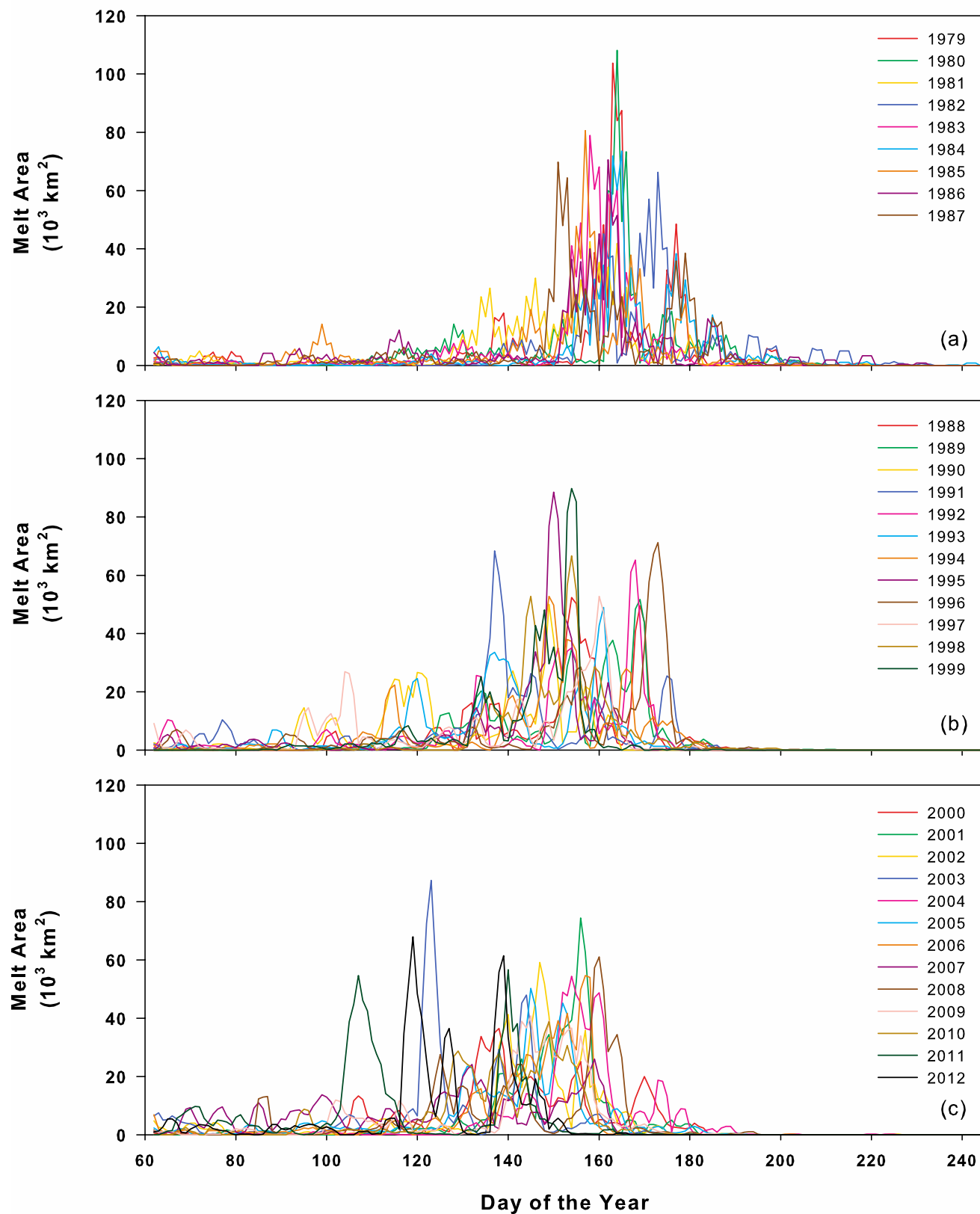


Figure S4. East Siberian Sea 3-day running mean of daily MO area for (a) SMMR years, (b) early SSM/I years, and (c) late SSM/I and SSMIS years.

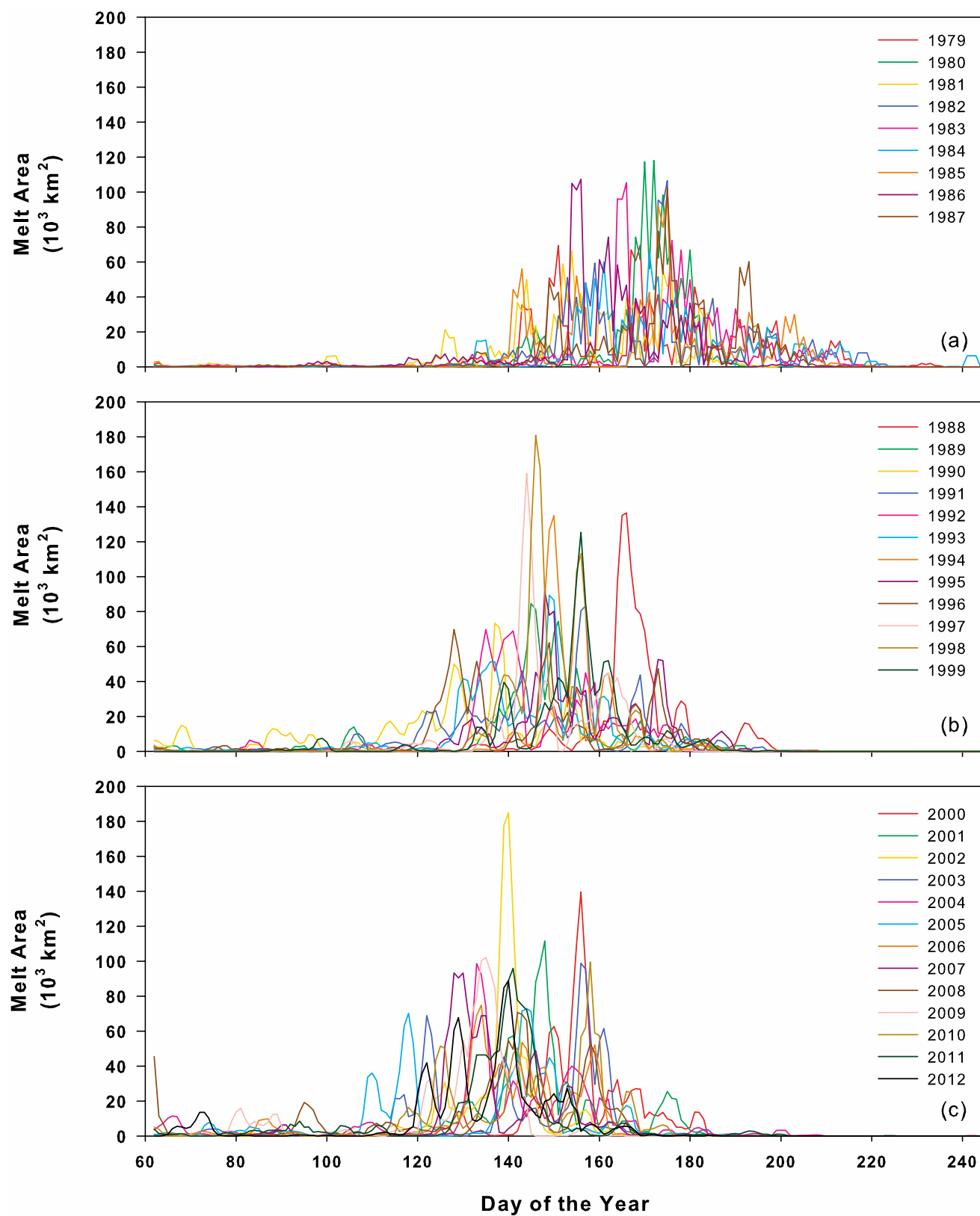


Figure S5. Chukchi Sea 3-day running mean of daily MO area for (a) SMMR years, (b) early SSM/I years, and (c) late SSM/I and SSMIS years.

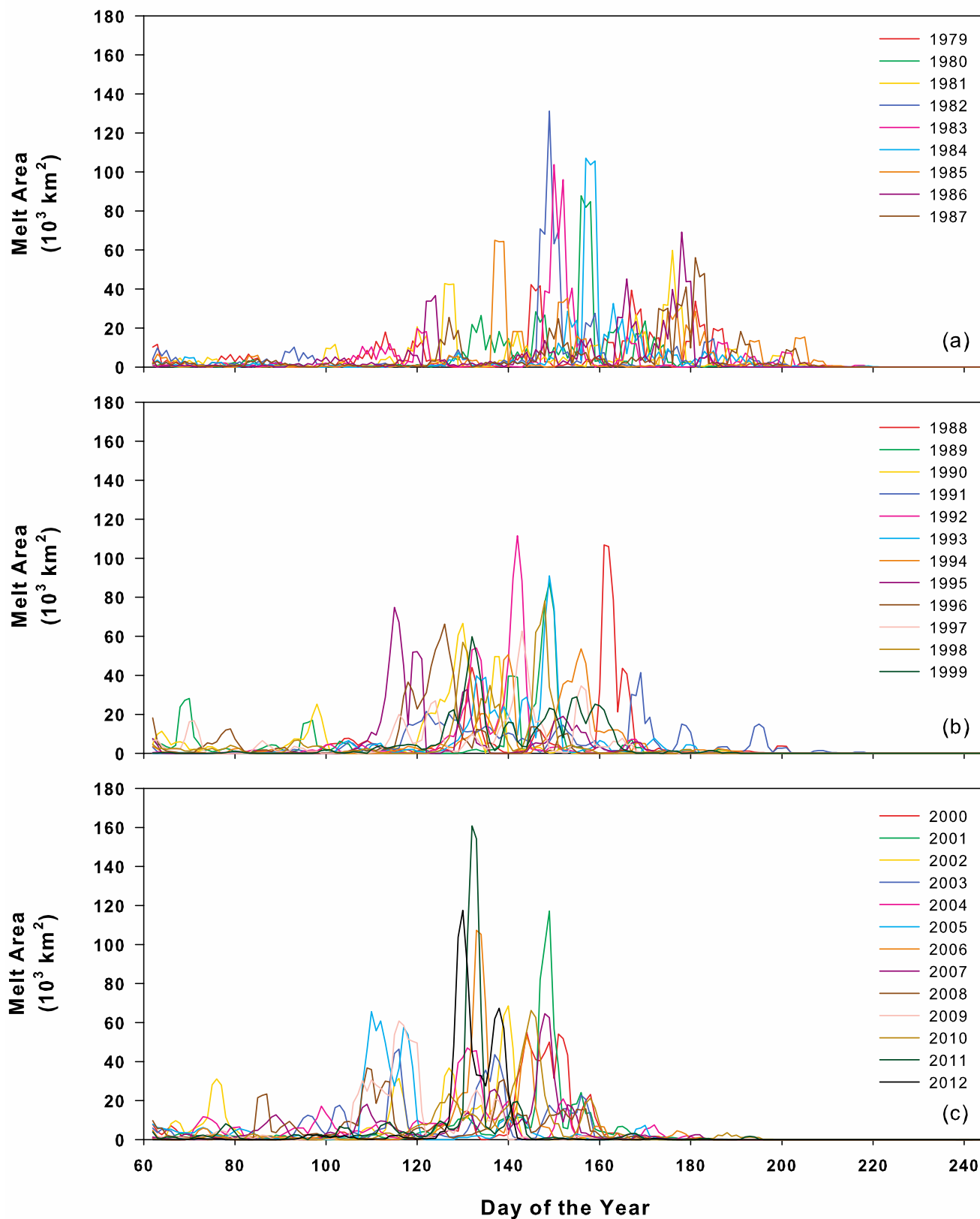


Figure S6. Beaufort Sea 3-day running mean of daily MO area for (a) SMMR years, (b) early SSM/I years, and (c) late SSM/I and SSMIS years.

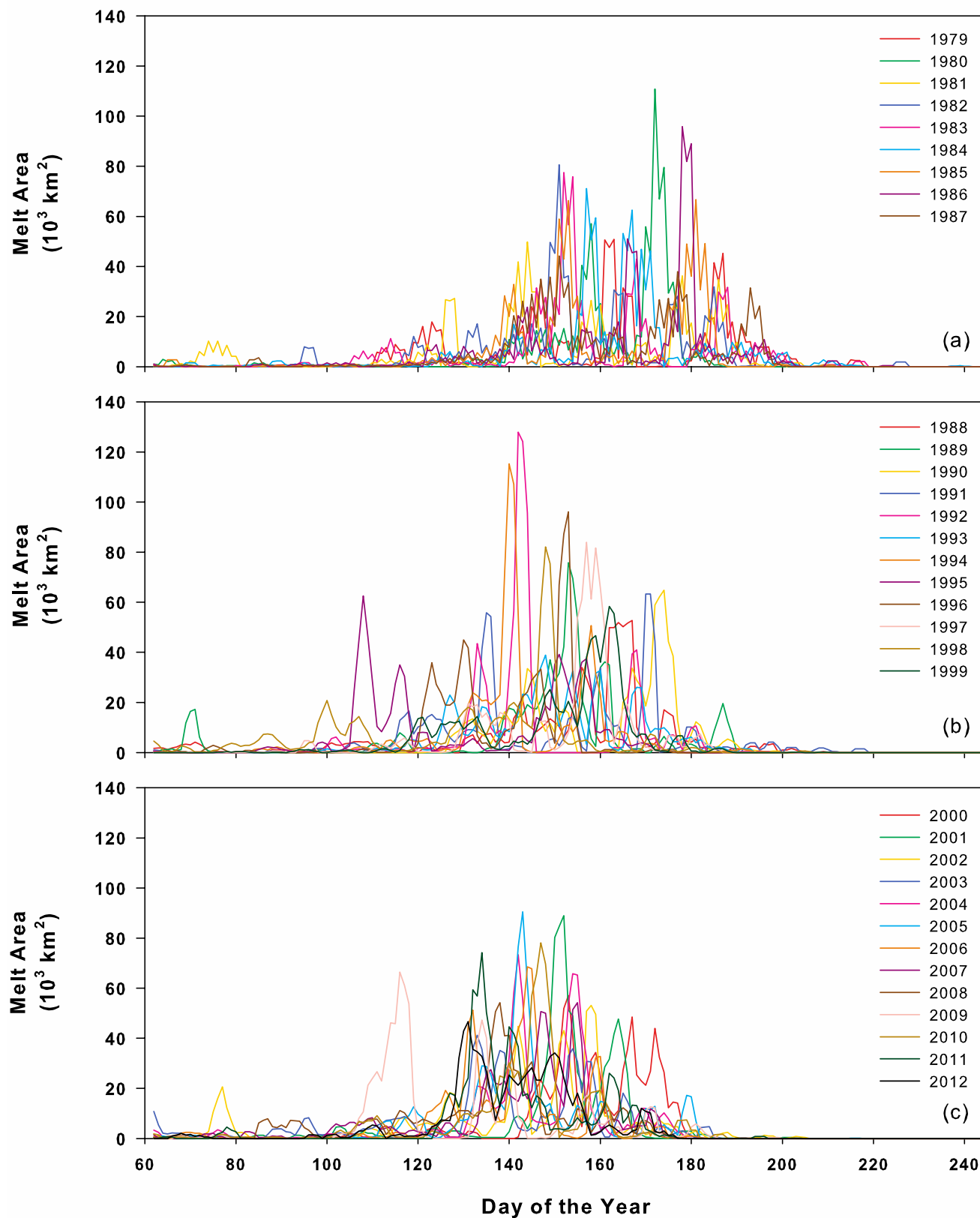


Figure S7. Canadian Arctic Archipelago 3-day running mean of daily MO area for (a) SMMR years, (b) early SSM/I years, and (c) late SSM/I and SSMIS years.

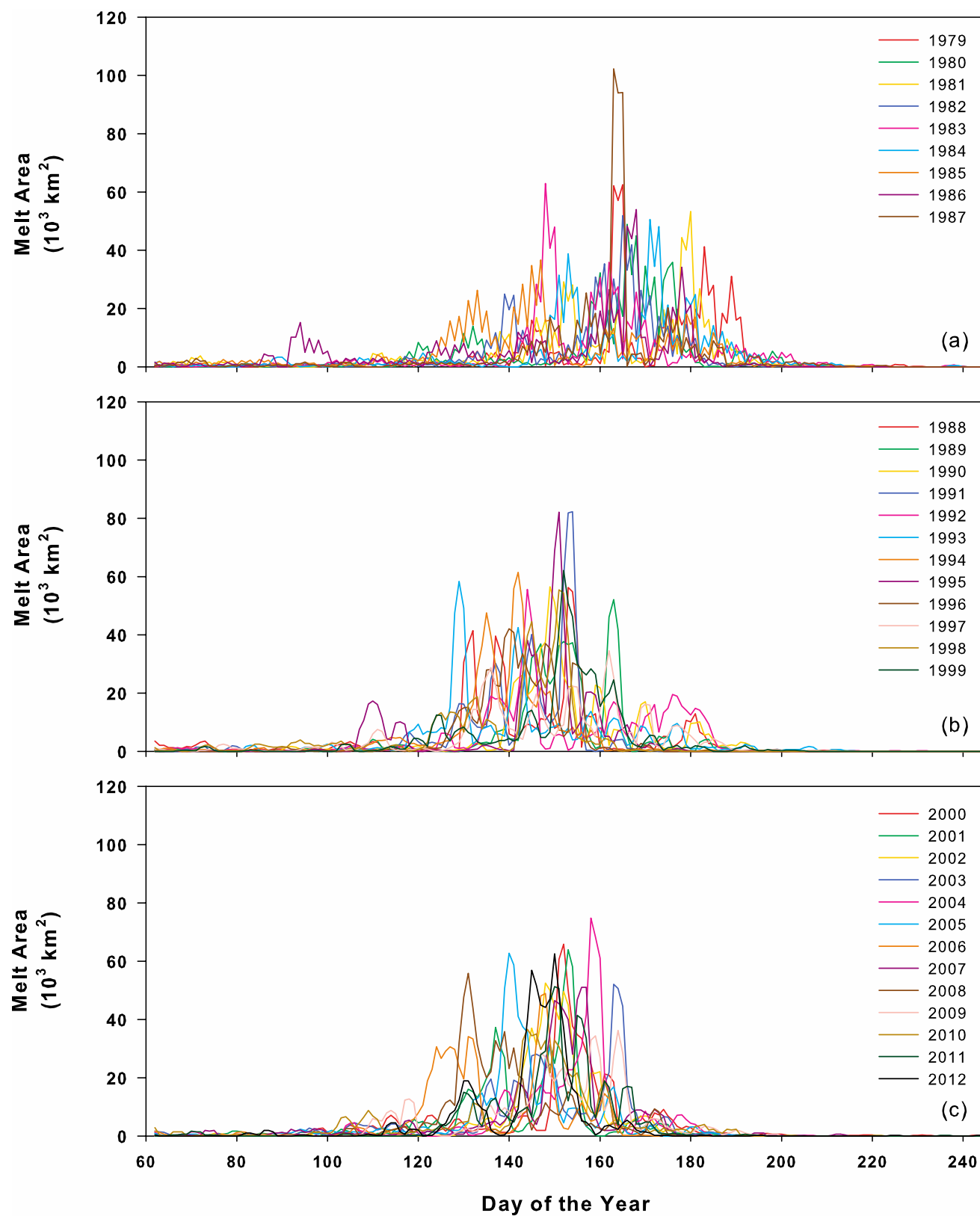


Figure S8. Central Arctic 3-day running mean of daily MO area for (a) SMMR years, (b) early SSM/I years, and (c) late SSM/I and SSMIS years.

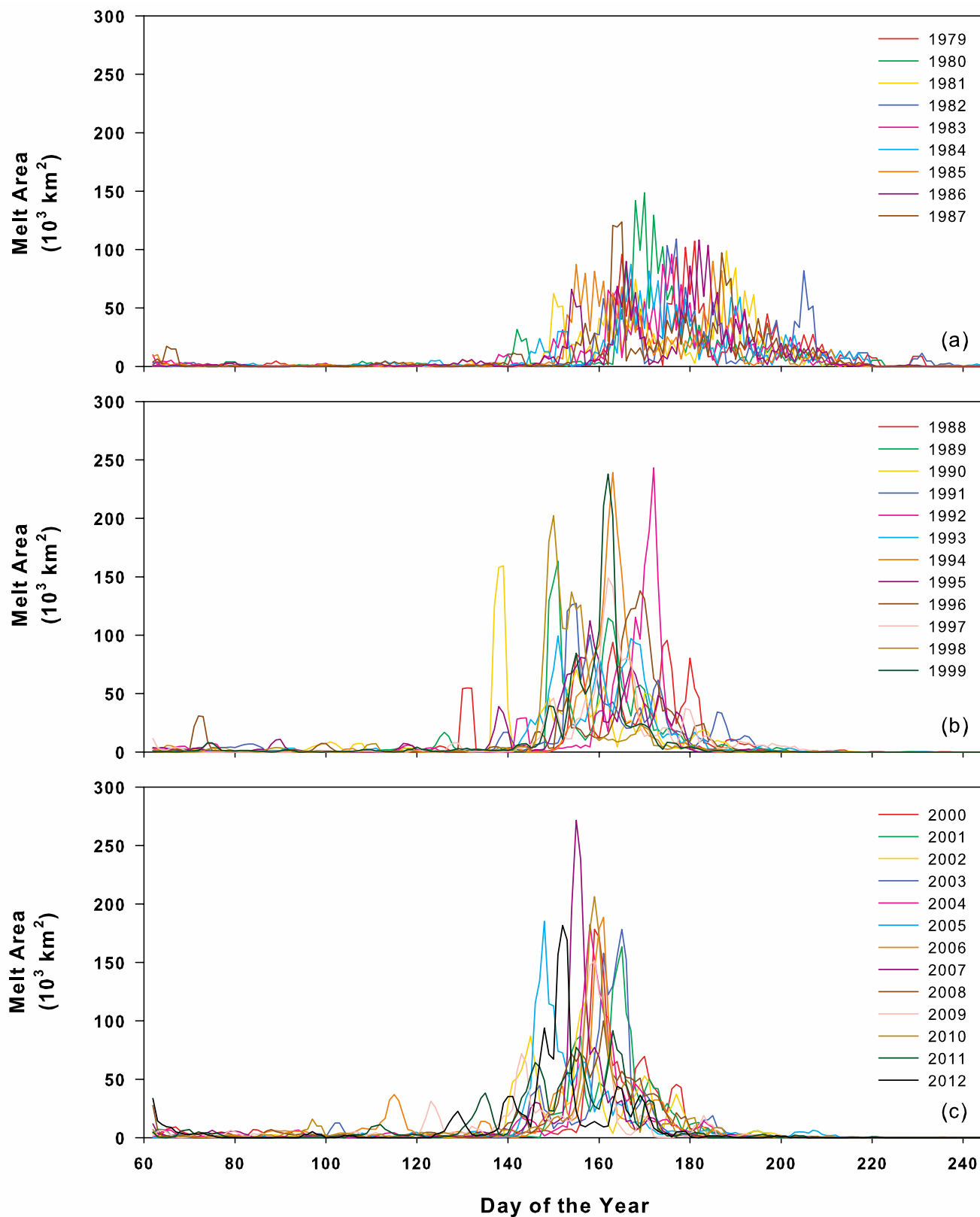


Figure S9. Baffin Bay 3-day running mean of daily MO area for (a) SMMR years, (b) early SSM/I years, and (c) late SSM/I and SSMIS years.

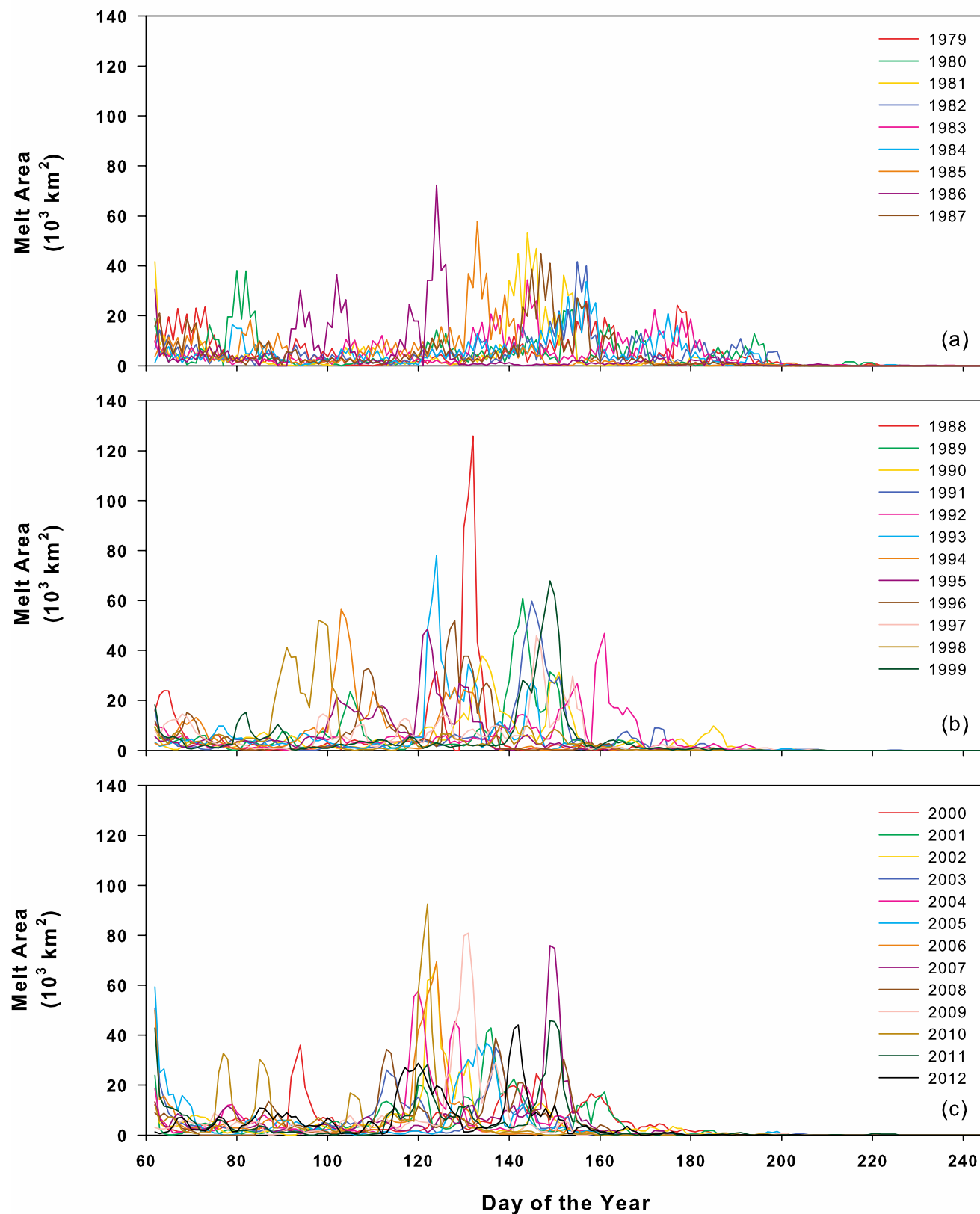


Figure S10. Greenland Sea 3-day running mean of daily MO area for (a) SMMR years, (b) early SSM/I years, and (c) late SSM/I and SSMIS years.

