

Figure S1. Percentages of reduction in RMS errors in the interferograms and percentages of increase after correction by different methods in areas F (first row), M (second row), and U(third row).

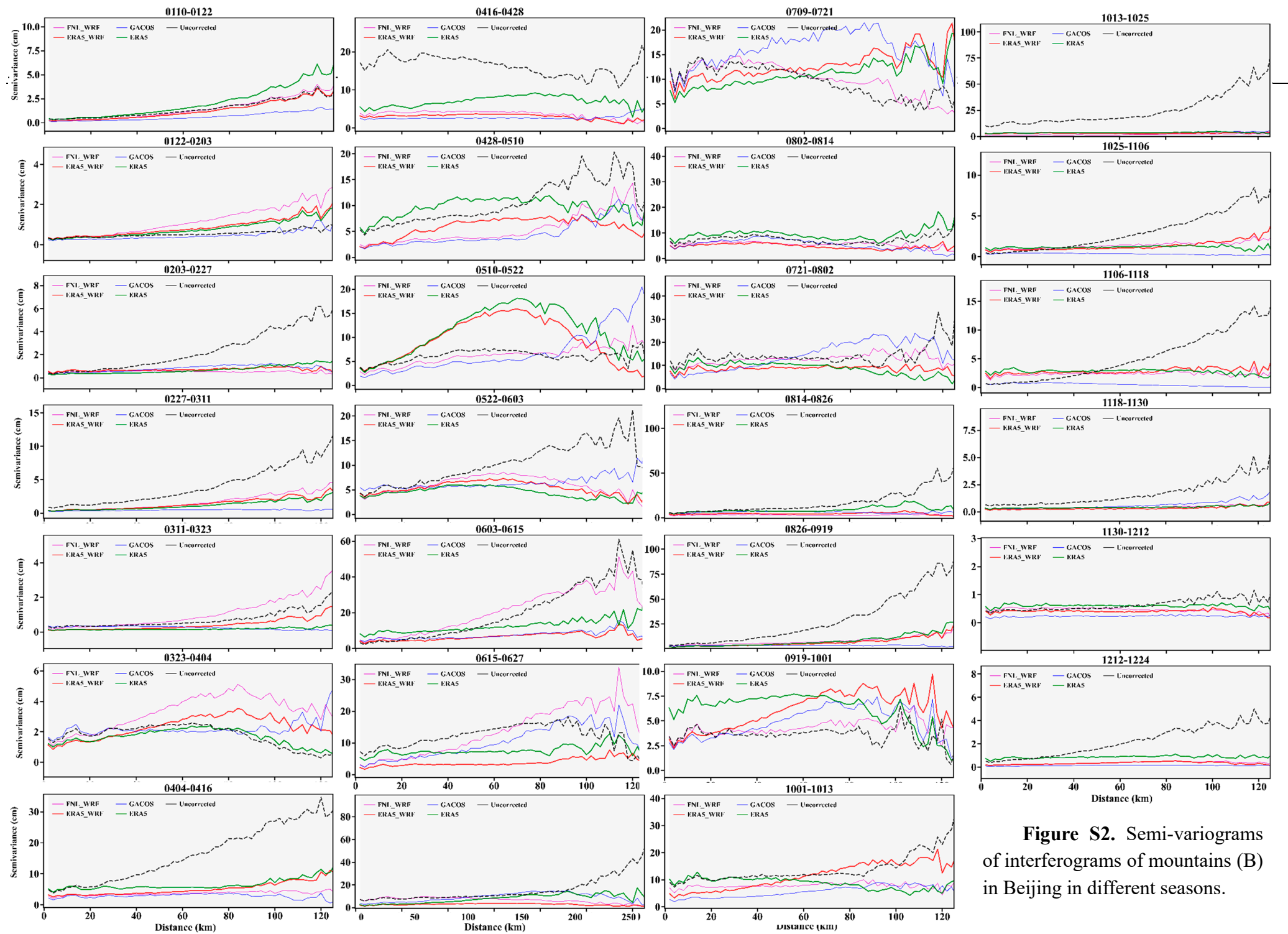


Figure S2. Semi-variograms of interferograms of mountains (B) in Beijing in different seasons.

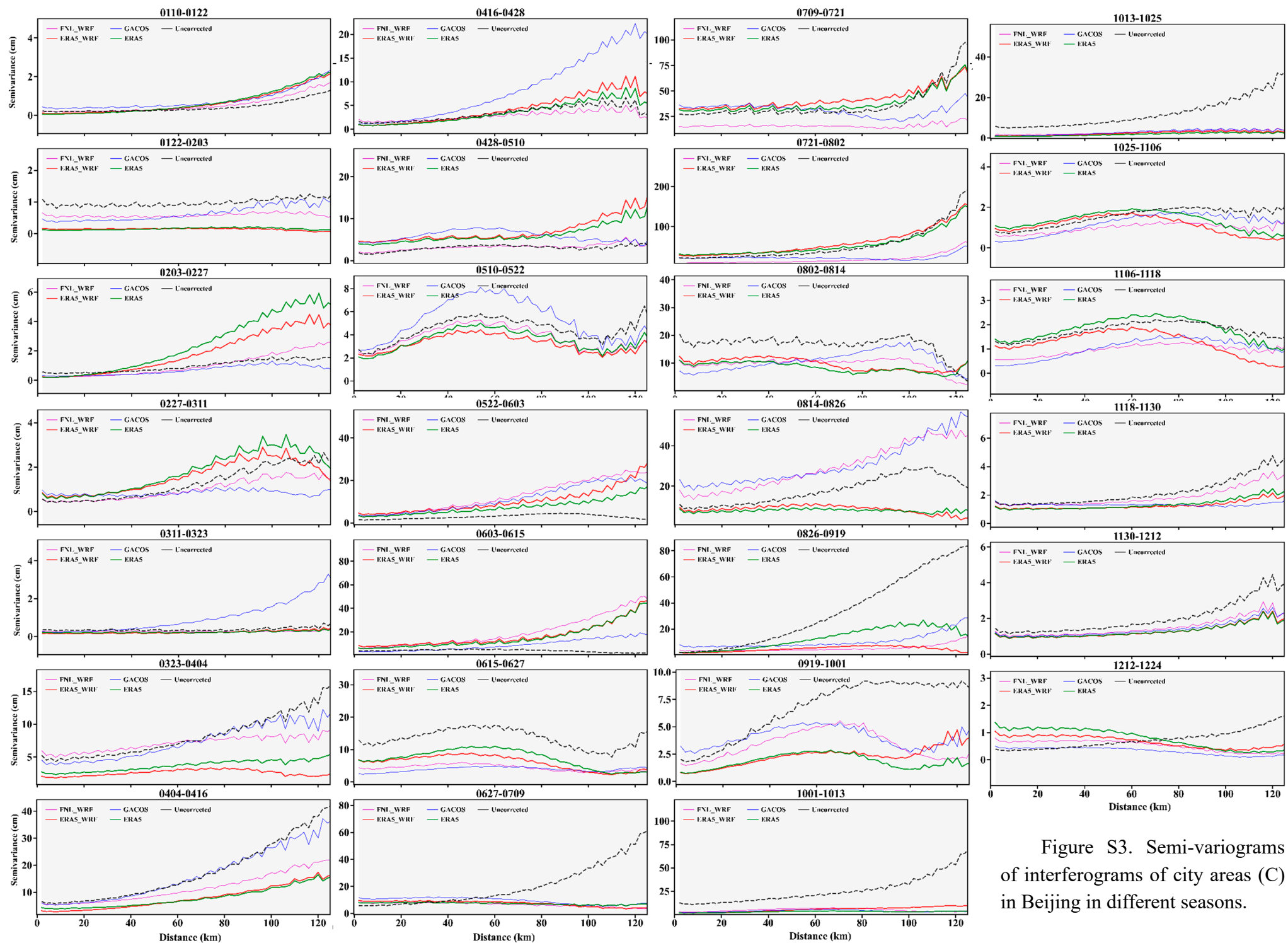


Figure S3. Semi-variograms of interferograms of city areas (C) in Beijing in different seasons.