

Figure S1. Study by cyclic voltammetry at various scan rates between 0 V – 1 V of the chitosan-based biosensing membranes deposited on gold screen-printed electrodes, [Glucose] = 1 mM.

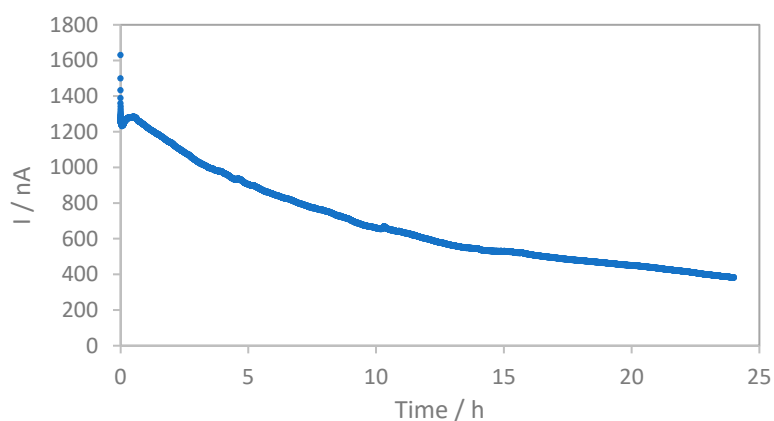


Figure S2. Stability in function of time of the chitosan-based biosensing membranes deposited on gold screen-printed electrodes during continuous measurement of glucose for 24 hours. Experimental conditions: PBS(1X) medium, [Glucose] = 0.5 mM (stable), under stirring (200 rpm) and current sampling frequency of 10 seconds.