

*sensors*



an Open Access Journal by MDPI

## Sensors and Artificial Intelligence Technologies in Neurodegenerative Disease Diagnosis

Guest Editors:

**Dr. Sofia Zaira Otin Mallada**

**Dr. Sergio G Rodrigo**

**Dr. Jorge Ares**

Deadline for manuscript  
submissions:

**20 November 2024**

### Message from the Guest Editors

Dear Colleagues,

In recent years, research groups have focused on developing new early-diagnosis and monitoring strategies for neurodegenerative disease based on objective biomarkers. They have especially concentrated on alternative non-invasive techniques that are less expensive, safer, and more comfortable for patients than a lumbar puncture to remove cerebrospinal fluid or MRI with intravenous contrast. Artificial intelligence has demonstrated its ability to process large quantities of data for creating diagnosis algorithms, which are able to predict or detect these pathologies. These algorithms can be developed using raw data from different diagnosis devices and to improve their diagnostic capacity.

This Special Issue focuses on the application of data-processing algorithms obtained from diagnostic sensor equipment applied to diagnosing and monitoring neurodegenerative diseases with the aim of helping in early detection.

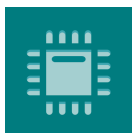
Potential topics include but are not limited to:

- artificial intelligence
- neurodegenerative disease
- Alzheimer disease
- Parkinson disease
- multiple sclerosis
- biomarker
- algorithm
- sensing



[mdpi.com/si/159644](https://mdpi.com/si/159644)

**Special Issue**



*sensors*



an Open Access  
Journal by MDPI

## Editor-in-Chief

### **Prof. Dr. Vittorio M. N. Passaro**

Dipartimento di Ingegneria  
Elettrica e dell'Informazione  
(Department of Electrical and  
Information Engineering),  
Politecnico di Bari, Via Edoardo  
Orabona n. 4, 70125 Bari, Italy

## Author Benefits

**Open Access :** free for readers, with [article processing charges \(APC\)](#) paid by authors or their institutions.

**High Visibility:** indexed within [Scopus](#), [SCIE \(Web of Science\)](#), [PubMed](#), [MEDLINE](#), [PMC](#), [Ei Compendex](#), [Inspec](#), [Astrophysics Data System](#), and [other databases](#).

**Journal Rank:** JCR - Q2 (*Instruments & Instrumentation*) / CiteScore - Q1 (*Instrumentation*)

## Message from the Editor-in-Chief

*Sensors* is a leading journal devoted to fast publication of the latest achievements of technological developments and scientific research in the huge area of physical, chemical and biochemical sensors, including remote sensing and sensor networks. Both experimental and theoretical papers are published, including all aspects of sensor design, technology, proof of concept and application. *Sensors* organizes Special Issues devoted to specific sensing areas and applications each year.

## Contact Us

*Sensors* Editorial Office  
MDPI, St. Alban-Anlage 66  
4052 Basel, Switzerland

Tel: +41 61 683 77 34  
[www.mdpi.com](http://www.mdpi.com)

[mdpi.com/journal/sensors](http://mdpi.com/journal/sensors)  
[sensors@mdpi.com](mailto:sensors@mdpi.com)  
[X@Sensors\\_MDPI](#)