

Supplementary Information for Barrier Performance of Spray Coated Cellulose Nanofibre Film

Kirubanandan Shanmugam ^{1,*}, Narendhar Chandrasekar ² and Ramachandran Balaji ³

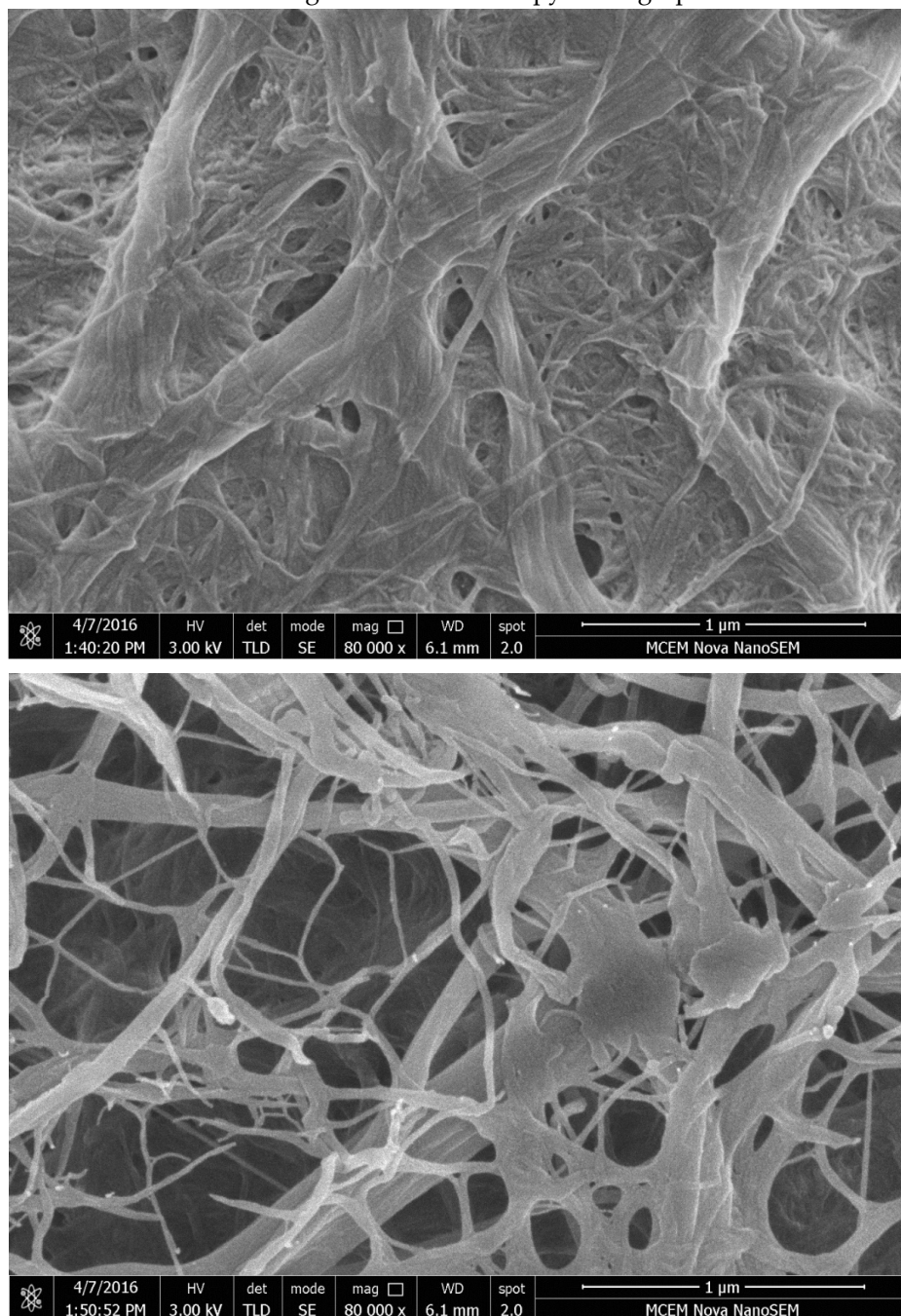
¹ Saveetha School of Engineering, SIMATS, Chennai 602107, Tamil Nadu, India

² Department of BioNano Technology, Gachon University, Seongnam 13120, Gyeonggi, Republic of Korea

³ Department of Chemical Engineering and Biotechnology, National Taipei University of Technology, Taipei 10608, Taiwan

* Correspondence: kirubanandan.shanmugam@gmail.com

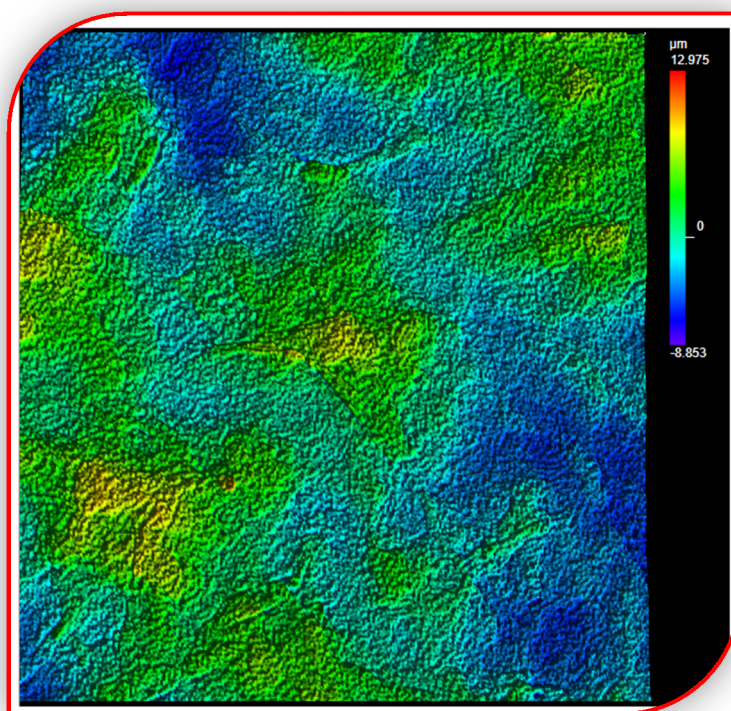
Scanning Electron Microscopy Micrograph



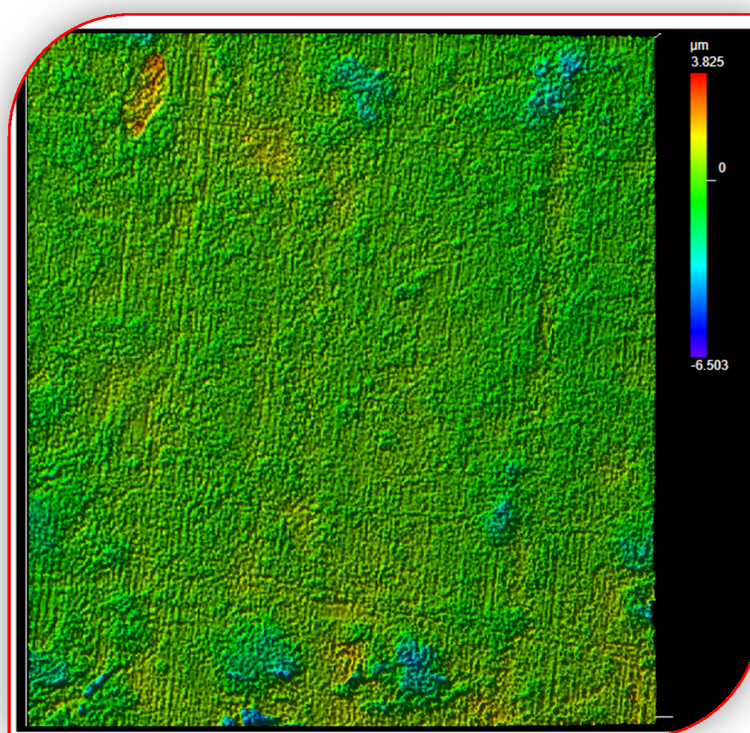
S1—Rough and Smooth Surface of Spray Coated CNF Film's SEM Micrographs

Figure S1. SEM Micrographs of Rough and Smooth Surfaces of CNF Film.

Optical Profilometry Images



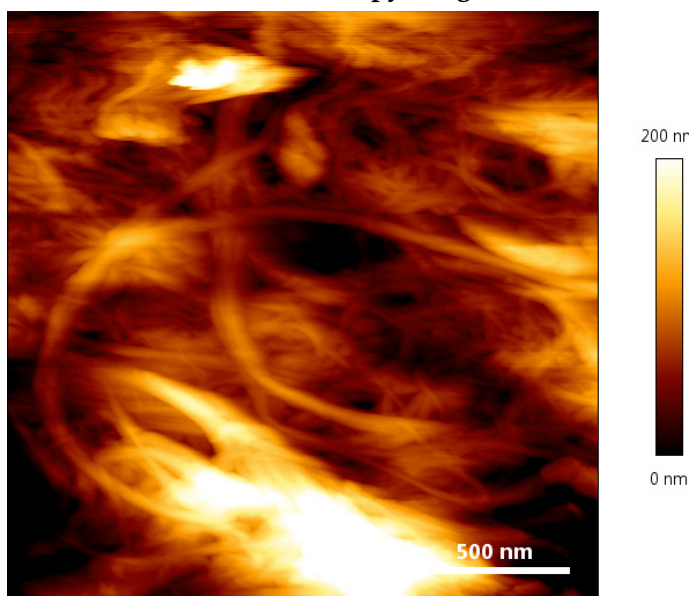
S2-1—Optical Profilometry Image of Rough Side of CNF Film



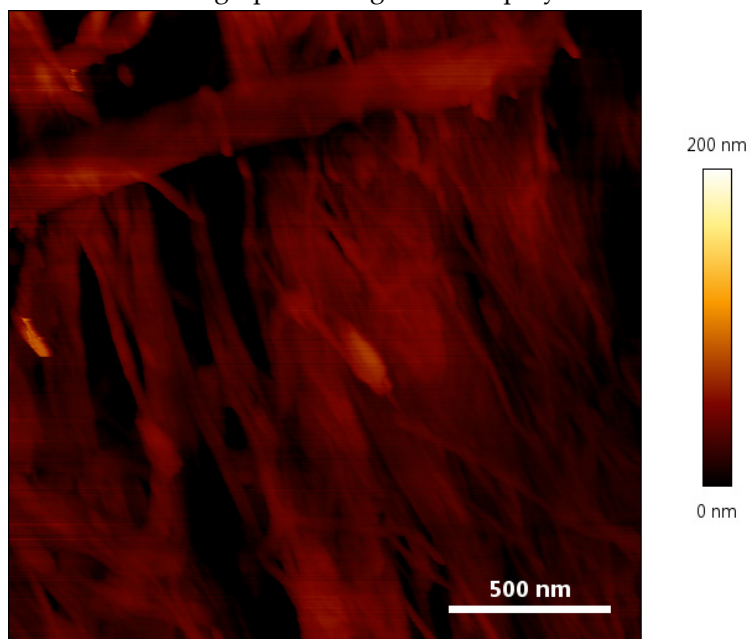
S2-2—Optical Profilometry Image of Smooth Side of CNF Film

Figure S2. Optical Profilometry Images of Rough and Smooth Surfaces of CNF Film.

Atomic -+
Force Microscopy Images

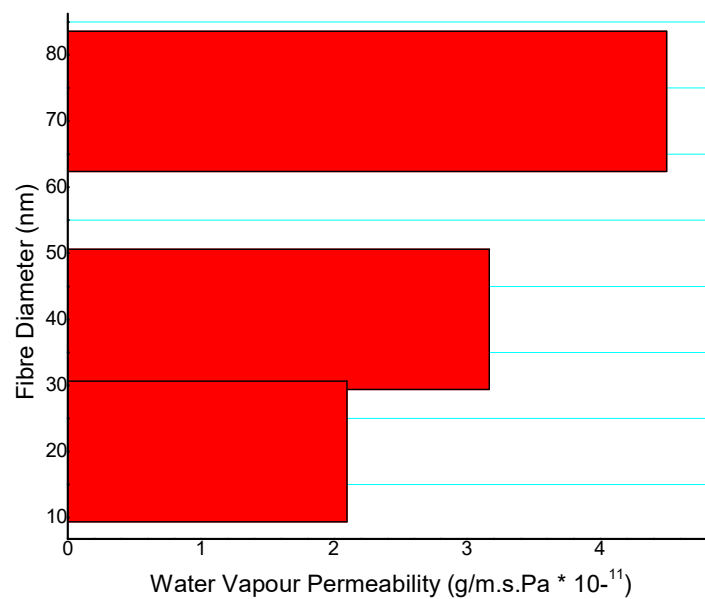


S3-1—AFM micrograph of Rough side of spray coated CNF film



S3-2—AFM micrograph of smooth surface of CNF film

Figure S3. Optifcal Profilometry Images of Rough and Smooth Surfaces of CNF Film.



S4—Effect of fibre diameter on the WVP of CNF film

Figure S4. Optifcal Profilometry Images of Rough and Smooth Surfaces of CNF Film.