

Supplementary Material

for

Group 14 Metallafluorenes for Lipid Structure Detection and Cellular Imaging

Helena J. Spikes*, Shelby J. Jarrett-Noland*, Stephan M. Germann,
Wendy Olivas, Janet Braddock-Wilking, and Cynthia M. Dupureur

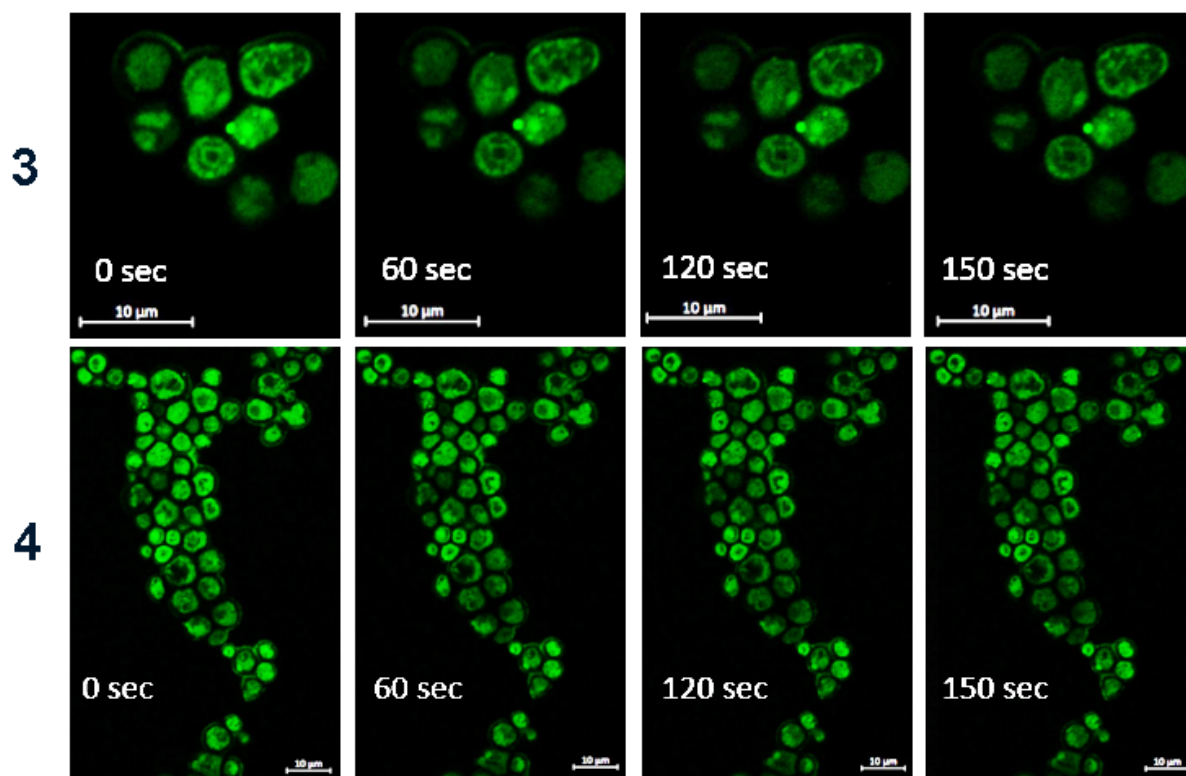


Figure S1. Photostability of 3 and 4 in Yeast Cells. See **Methods** for details. *S. cerevisiae* were stained for 15 minutes with 15 μ M 1 or 2 and then imaged periodically during continuous excitation. Magnification is 63x.

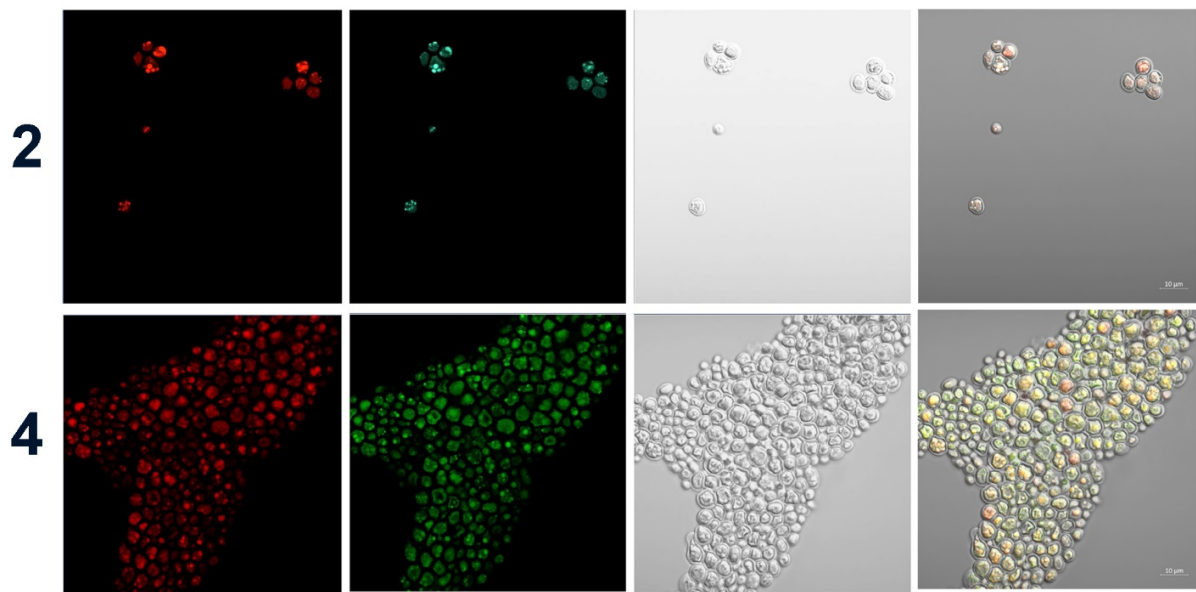


Figure S2. 2 and 4 Colocalize with Nile Red in Yeast. Red, Nile Red; green, MF as indicated; third panel, transmitted light; yellow indicates colocalization. Magnification is 63x.