

Figure S1: Pictures of samples



Figure S1\_1: Pouches made of multilayer materials



Figure S1\_2: Bricks made of beverage carton



Figure S1\_3: Cups in bundles



Figure S1\_4: Bottles





Figure S1\_5: Glass packagings



Figure S1\_6: Buckets



Figure S1\_7: Cups, some with top-up, take away food



Figure S1\_8: Cups





Figure S1\_9: Cups, some in bundles



Figure S1\_10: Cups with direct print, in-mould label or paper/carton wrapping



Figure S1\_11: Cups with direct print



Figure S1\_12: Cups with direct print or paper/carton wrapping



Figure S1\_13: Cups with paper/carton wrapping





Figure S1\_14: Cups with direct print, in-mould label or paper labels



Figure S1\_15: Cups in bundle

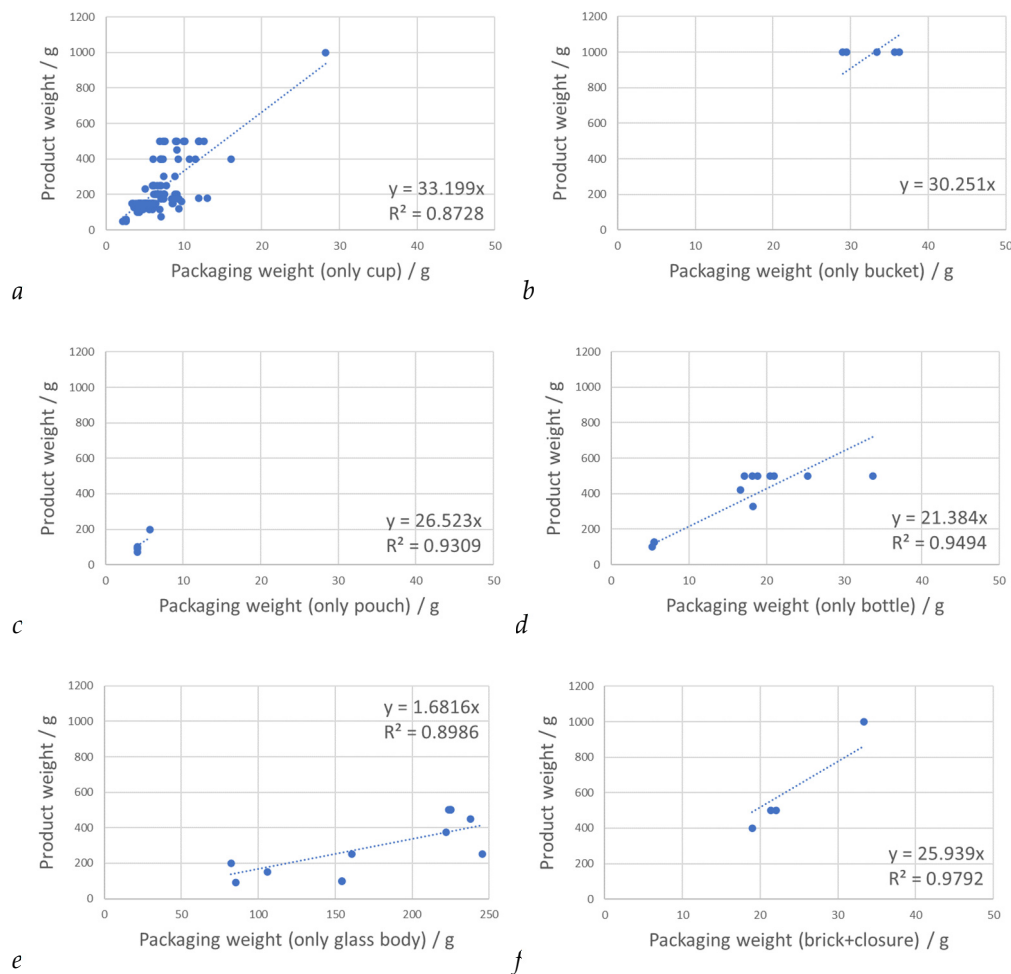


Figure S1\_16: Cups with shrink sleeve



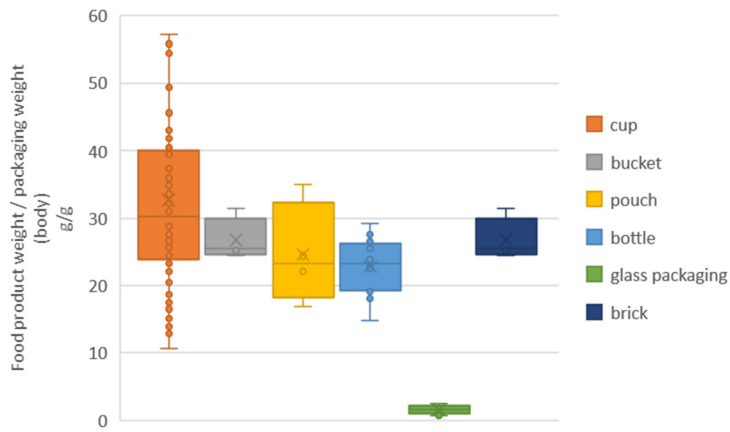
Figure S2: *Packaging efficiencies related to product weight*

In Figure S1 the product weight as function of the packaging weight is shown. The values are referred to the packaging body without further separatable components (closure, wrapping).



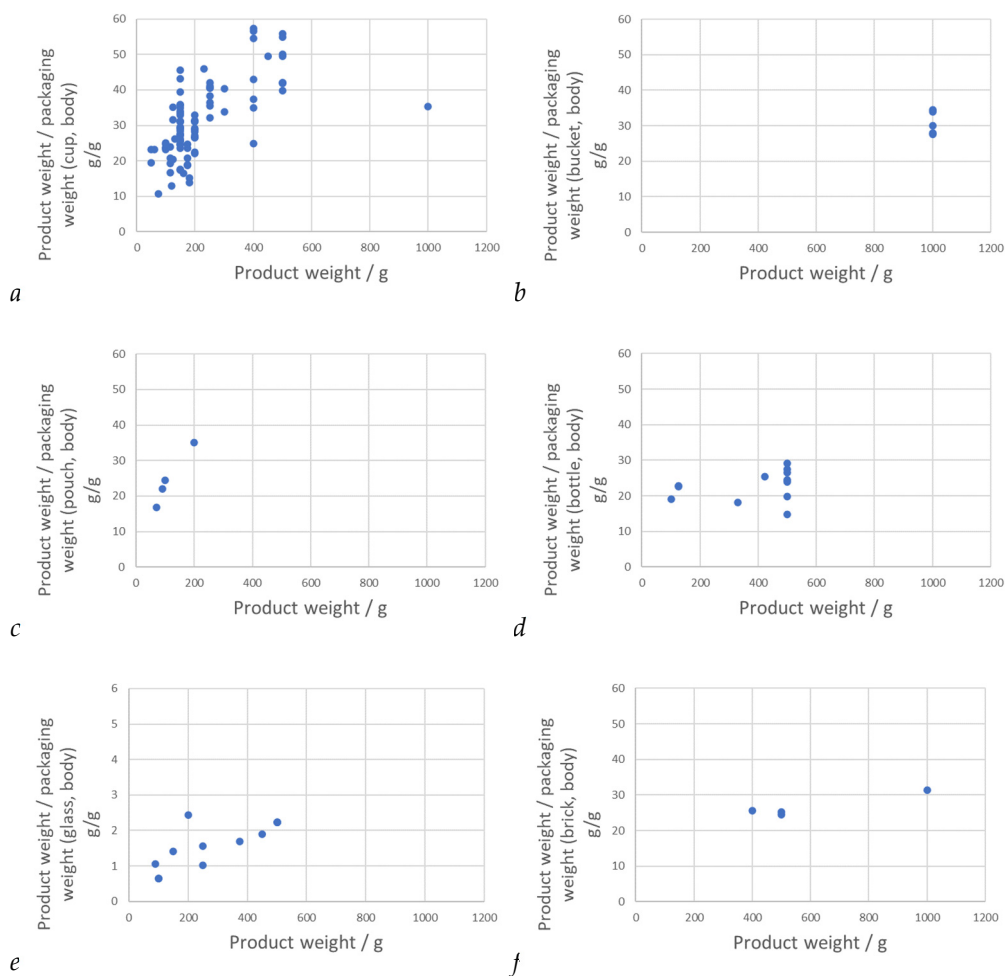
**Figure S2\_1:** Food product weight versus used packaging weight, only the body without lid and wrappings if applicable; a: cup, b: bucket, c: pouch, d: plastic bottle, e: glass packaging, f: brick; straight line equation with origin 0 applied

In Figure S2 packaging efficiencies are referred to the packaging bodies. The body is necessary to contain the wet dairy products. The wrapping can be of an alternative material such as paper or board.



**Figure S2\_2:** Packaging efficiencies for different packaging formats, values refer to only body with in-mold label (separable components are excluded)

In Figure S3 packaging efficiencies (only for the body) are referred to the food product weights. The higher the product weight the more packaging material is required (lower packaging material efficiency).



**Figure S2\_3:** Packaging efficiencies for different packaging formats, only body and with in-mold label (separable components are excluded); a: cup, b: bucket, c: pouch, d: plastic bottle, e: glass packaging, f: brick



Figure S3: Disposal advice on packagings (red arrow)



Figure S3\_1: Cup, direct print



Figure S3\_2: Cup, direct print



Figure S3\_3: Glass packagings with paper label

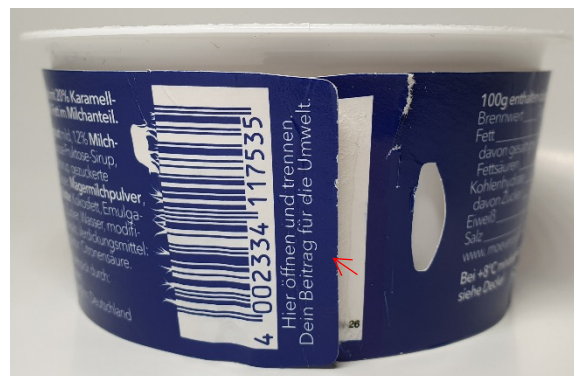


Figure S3\_4: Cups with paper/carton wrapping





Figure S3\_5: Paper/carton wrapping of cup

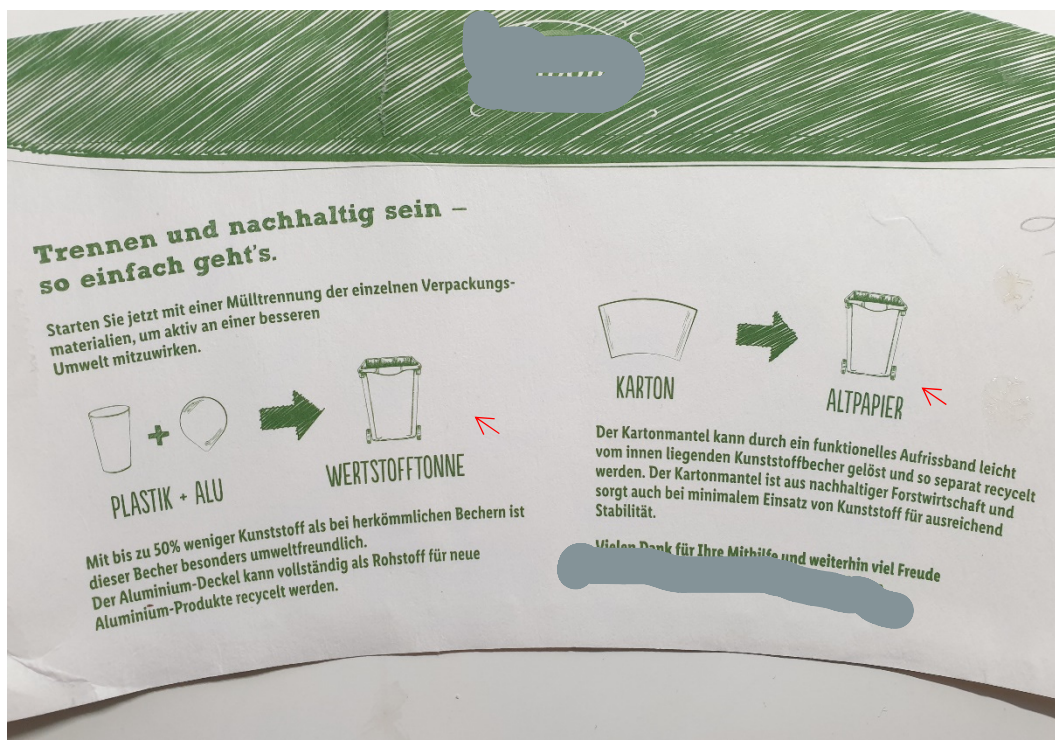


Figure S3\_6: Paper/carton wrapping of cup



Figure S3\_7: Paper/carton wrapping of bundle



Figure S3\_8: Paper/carton wrapping of cup





Figure S3\_9: Paper/carton wrapping of cup