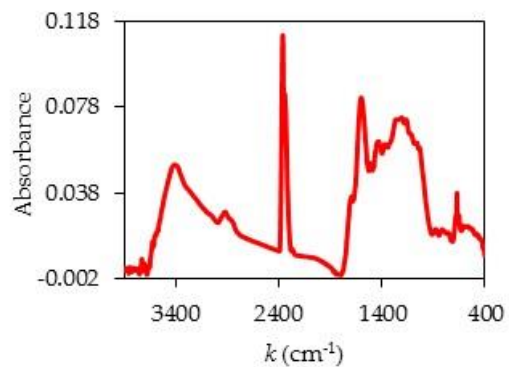
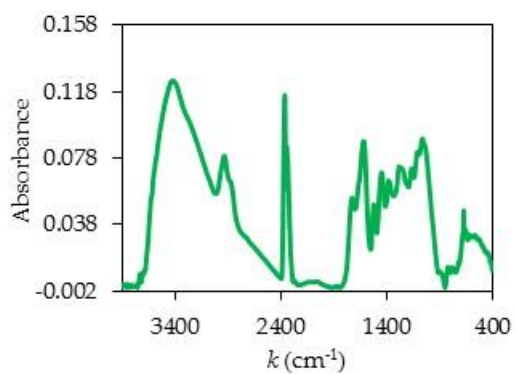
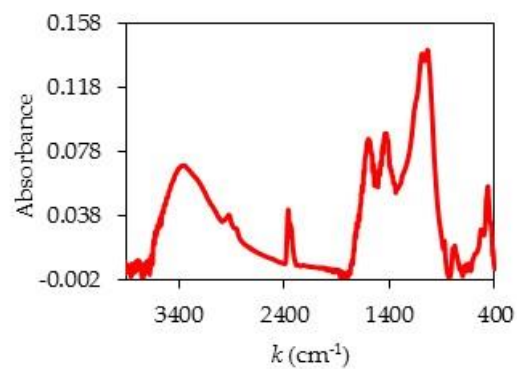
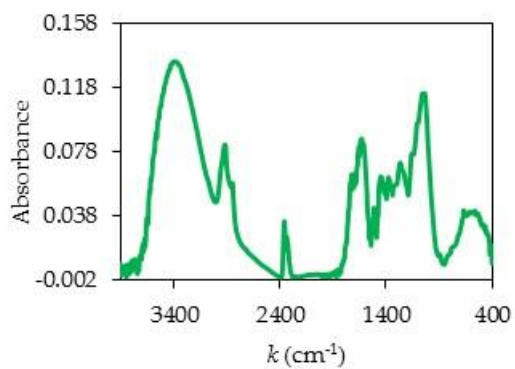


Down wood

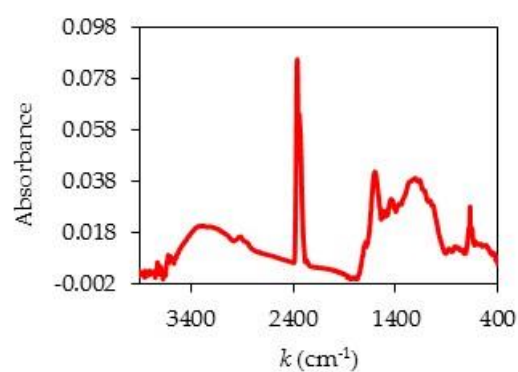
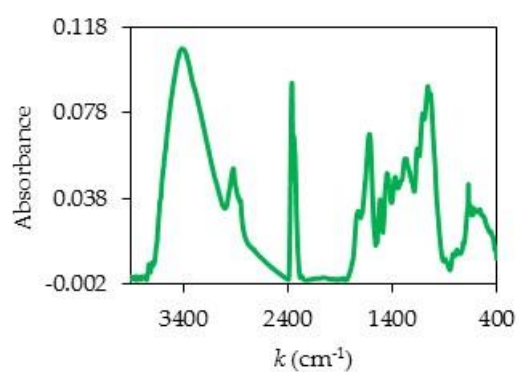


Cone

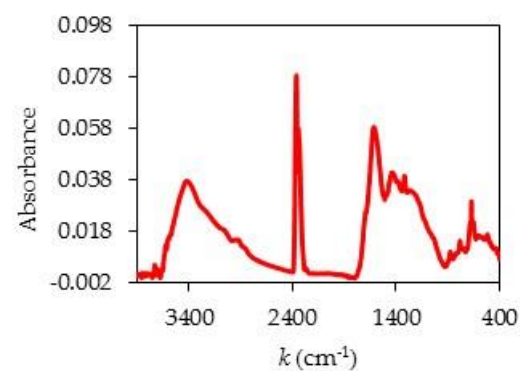
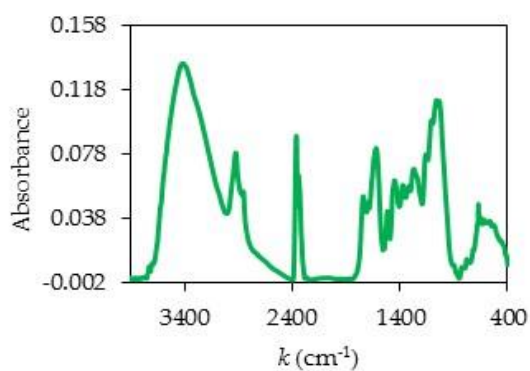


Forest floor

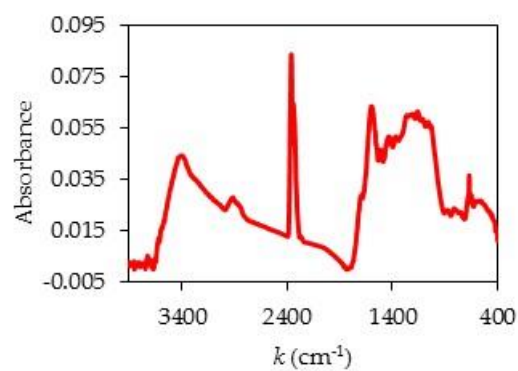
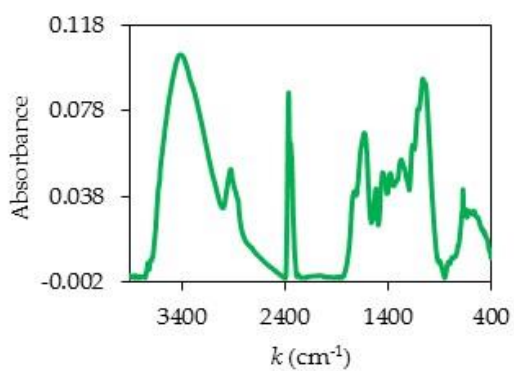
Figure S1. FTIR spectra of unburned fuels (**left**) and PyOM (**right**) in Scots pine forest. Note: k – wavenumber.



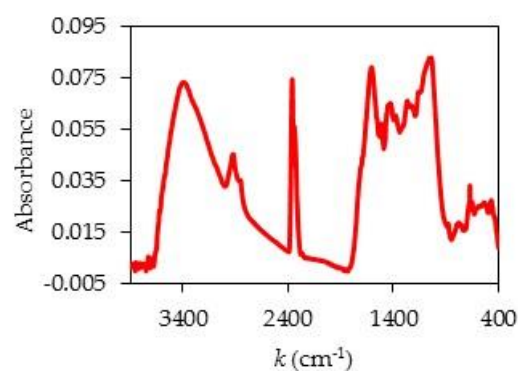
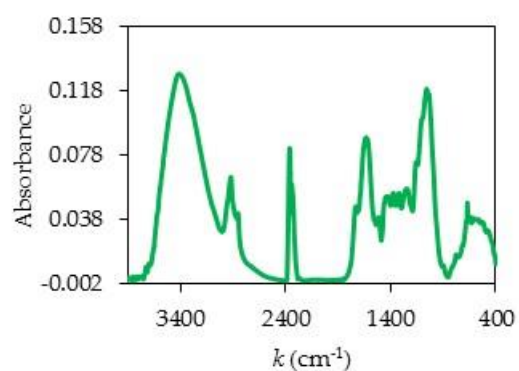
Bark



Down wood

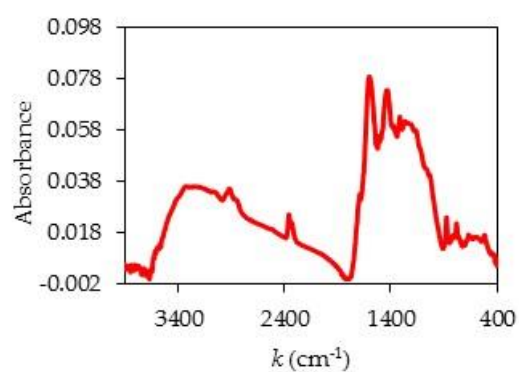
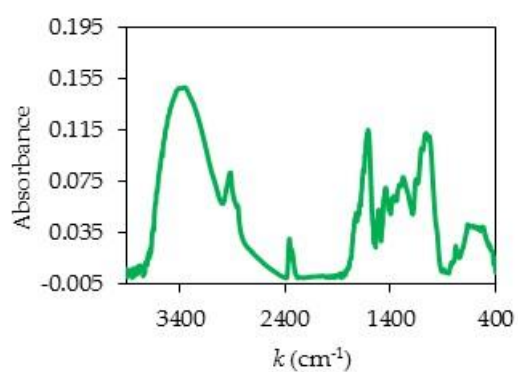


Cone

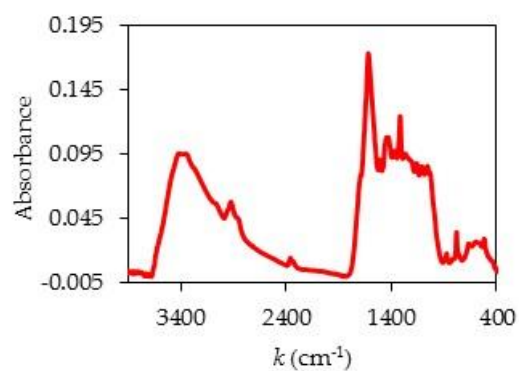
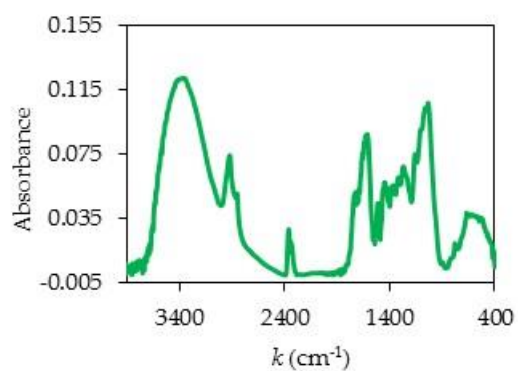


Forest floor

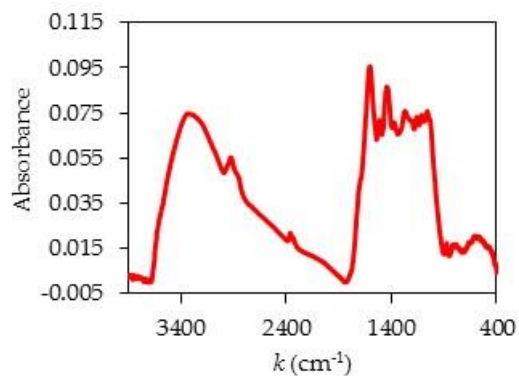
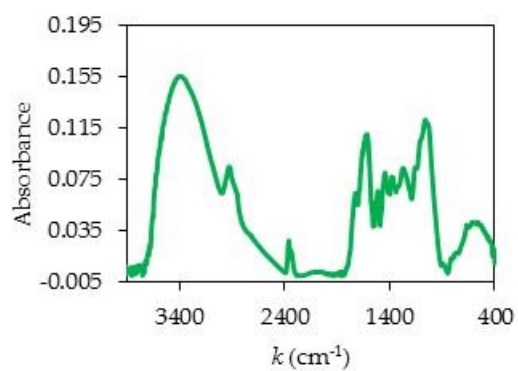
Figure S2. FTIR spectra of unburned fuels (**left**) and PyOM (**right**) in larch forest. Note: k – wavenumber.



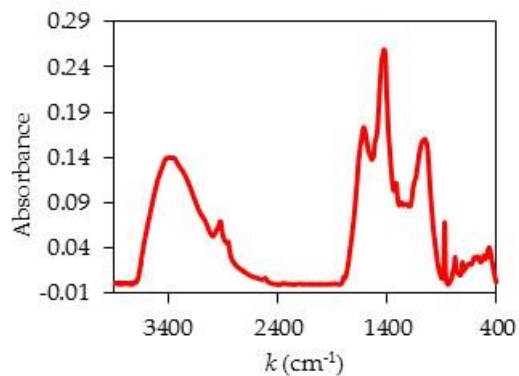
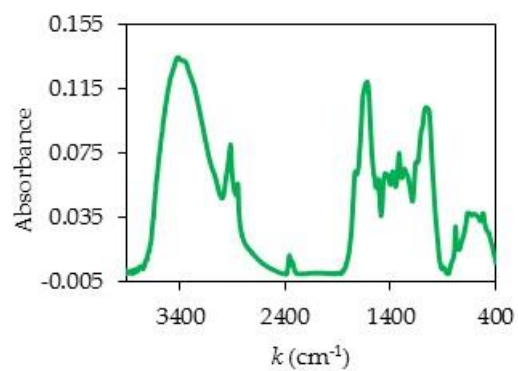
Bark



Down wood



Cone



Forest floor

Figure S3. FTIR spectra of unburned fuels (**left**) and PyOM (**right**) in spruce forest. Note: k – wavenumber.

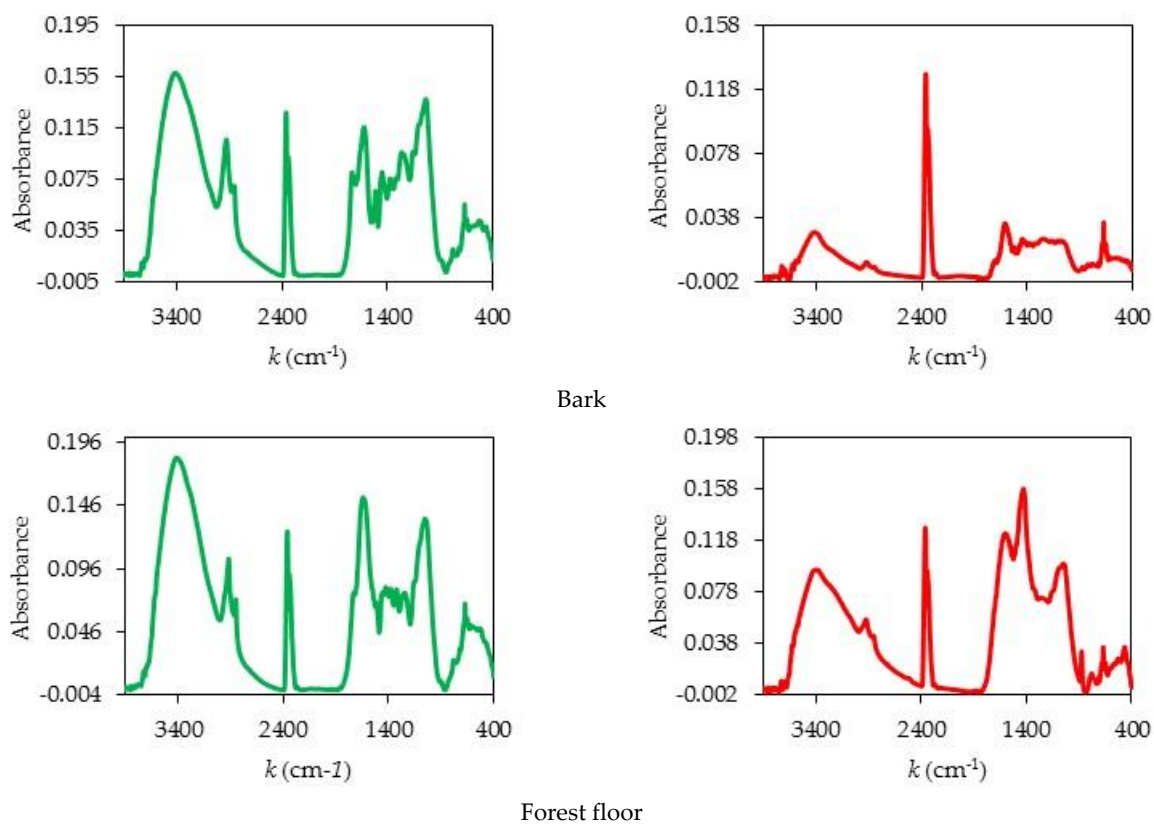


Figure S4. FTIR spectra of unburned fuels (**left**) and PyOM (**right**) in birch forest. Note: k – wavenumber