

Supplementary annex: Tables and figures.

ANNEX

Table S1: Preliminary characterization of terrain and vegetation in the research area. Mean values and standard deviations.

N	Plots/ Treatment	Exposition	Slope (%)	Rock/soil type	Initial Main Vegetation (including mosses)
3	Control	Southwest	3.1±0.4	CMe	<i>Pinus Nigra</i> . J.F.Arnold <i>Bromus erectus</i> Hud. <i>Genista scorpius</i> (L.) DC. <i>Lavandula latifolia</i> Medik.
3	Spring PB	Southwest	3.3±0.3	CMe	<i>Pinus Nigra</i> . J.F.Arnold <i>Bromus erectus</i> Hud. <i>Genista scorpius</i> (L.) DC. <i>Rosa canina</i> L.
3	Autumn PB	Southwest	3.3±0.4	CMe	<i>Pinus Nigra</i> . J.F.Arnold <i>Bromus erectus</i> Hud. <i>Genista scorpius</i> (L.) DC <i>Ononis spinosa</i> L.
3	Summer PB	Southwest	3.3±0.4	CMe	<i>Pinus Nigra</i> . J.F.Arnold <i>Bromus erectus</i> Hud. <i>Genista scorpius</i> (L.) DC <i>Lavandula angustifolia</i> Mill.

N: Number of plots.

Table S2: Preliminary characterization (Pre-burned) of physico-chemical soil parameters in the research area. Mean values and standard deviations.

Parameters	Plots/Seasons			
	Control	Spring PB	Autumn PB	Summer PB
Organic Matter Layer depth (cm)	14 ± 6	9.5 ± 3.5	15.2 ± 6.8	9.9 ± 4.7
pH	7.3 ± 0.4	7.6 ± 0.6	7.4 ± 0.5	7.4 ± 0.4
Nitrogen (%)	0.5 ± 0.0	0.4 ± 0.0	0.7 ± 0.1	0.3 ± 0.0
Organic Carbon (%)	11.4 ± 2.1	9.7 ± 1.7	12.1 ± 2.7	10.4 ± 1.9
Inorganic Carbon (%)	4.1 ± 1.3	3.8 ± 0.4	4.5 ± 1.6	4.0 ± 0.9
Organic Matter (%)	18.0 ± 3.6	9.3 ± 1.9	19.0 ± 3.9	17.2 ± 2.9
Sand (%)	32.6 ± 6.2	30.2 ± 5.1	33.1 ± 6.5	32.1 ± 5.9
Silt (%)	25.3 ± 6.4	27.1 ± 6.9	24.2 ± 6.1	24.8 ± 5.9
Clay (%)	42.1 ± 8.6	44.2 ± 8.5	43.1 ± 8.3	44.1 ± 8.5
Soil texture	Clay	Clay	Clay	Clay

PB: prescribed burning.

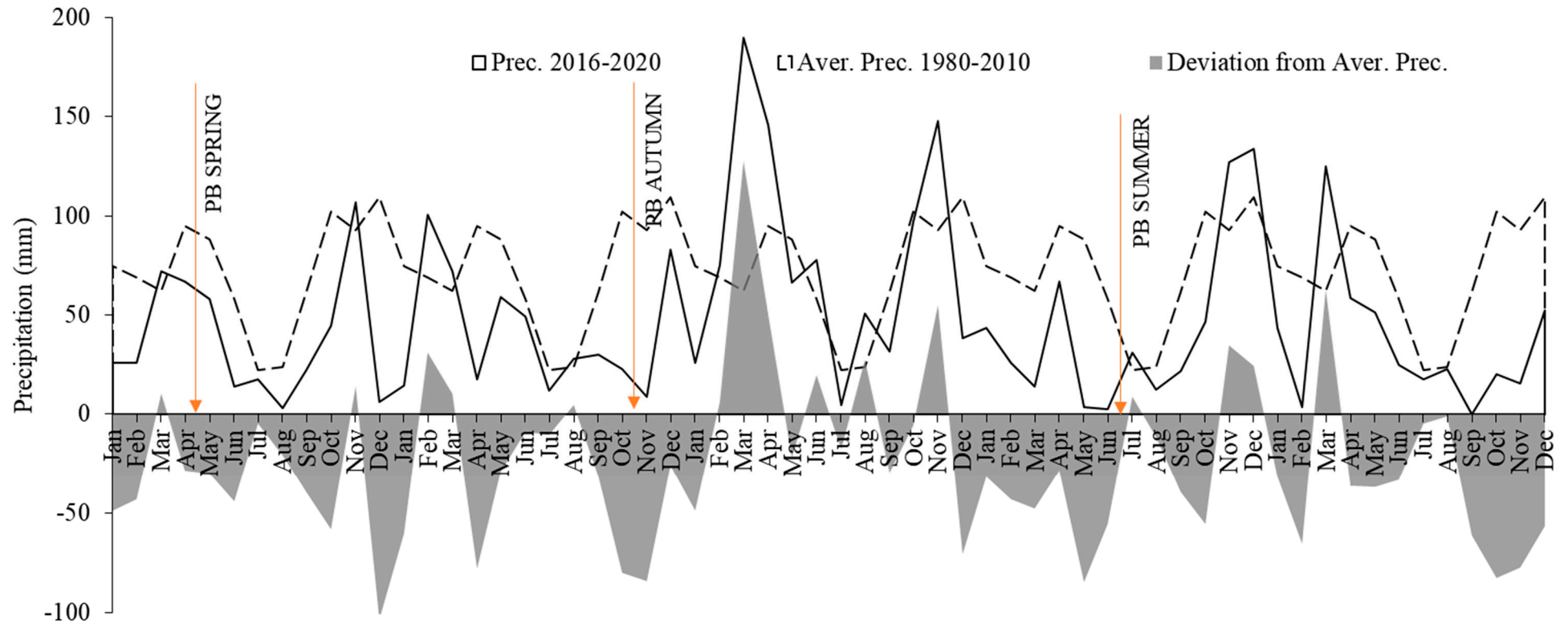


Figure S1: Graph of precipitation (mm) during the study period (2016-2020) compared to the historical average (1980-2010) of the study area, Beteta (Spain). Dashed lines depict the historical average. The continuous line refers to the precipitation for the study period (2016-2020). The gray area denotes the deviation between the historical average and that of the study. 2016 Spring Prescribed Burn = PB SPRING; 2017 Prescribed Burn = PB AUTUMN; 2019 Summer Prescribed Burn = PB SUMMER.