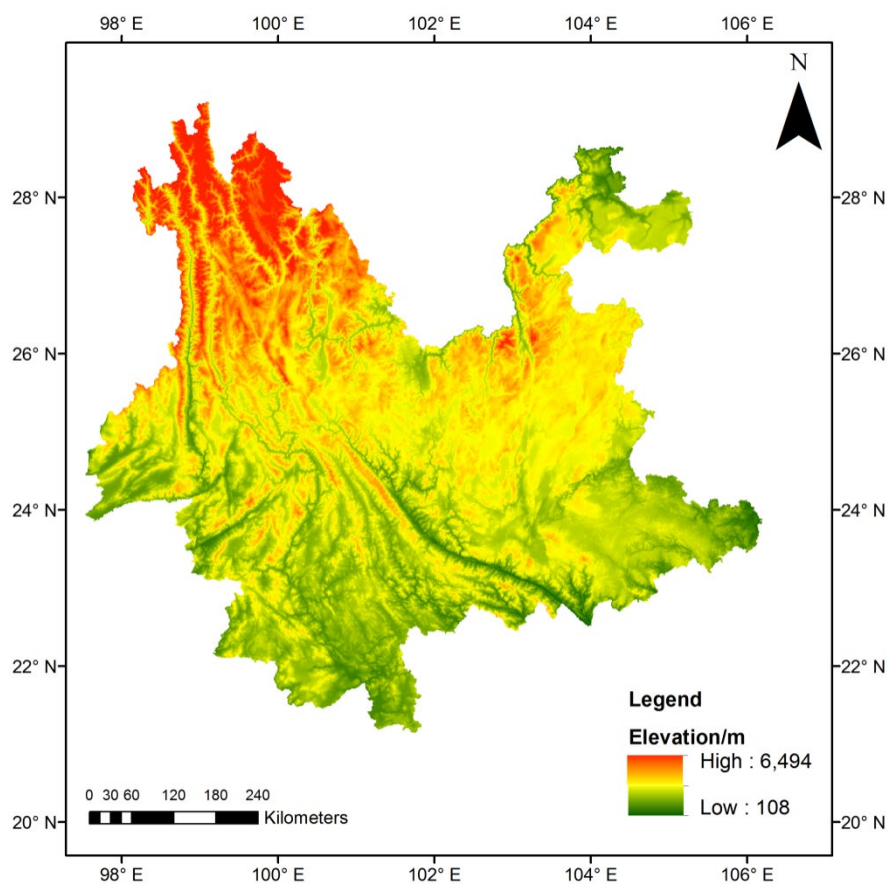


## Supplementary Materials



**Figure S1.** Elevation analysis map of Yunnan Province.

**Table S1.** Formulas, boiling points and flash points of the main terpenoids in *P. yunnanensis*.

	Name	Formula	CAS	Boiling Point (°C)	Flash Point (°C)
Monoterpenes	$\alpha$ -tricyclene	C <sub>10</sub> H <sub>16</sub>	508-32-7	150-152	26
	$\alpha$ -pinene	C <sub>10</sub> H <sub>16</sub>	7785-70-8	155-156	32
	camphene	C <sub>10</sub> H <sub>16</sub>	79-92-5	159-160	36
	sabinene	C <sub>10</sub> H <sub>16</sub>	3387-41-5	163-164	37
	$\beta$ -pinene	C <sub>10</sub> H <sub>16</sub>	127-91-3	165-167	32
	$\beta$ -myrcene	C <sub>10</sub> H <sub>16</sub>	123-35-3	167-168	37
	limonene	C <sub>10</sub> H <sub>16</sub>	5989-27-5	176-177	48
	$\gamma$ -Terpinene	C <sub>10</sub> H <sub>16</sub>	99-86-5	174-175	46
	terpinolene	C <sub>10</sub> H <sub>16</sub>	586-62-9	186-187	37
	p-cymene	C <sub>10</sub> H <sub>14</sub>	99-87-6	176-178	47
	linalool	C <sub>10</sub> H <sub>18</sub> O	78-70-6	198-199	55
Sesquiterpenes	$\beta$ -elemene	C <sub>15</sub> H <sub>24</sub>	515-13-9	251-253	98
	$\beta$ -caryophyllene	C <sub>15</sub> H <sub>24</sub>	87-44-5	254-257	97
	humulene	C <sub>15</sub> H <sub>24</sub>	6753-98-6	166-168	90
	germacrene D	C <sub>15</sub> H <sub>24</sub>	37839-63-7	279-280	112
	farnesol	C <sub>15</sub> H <sub>26</sub> O	4602-84-0	283-284	112
	germacrene B	C <sub>15</sub> H <sub>24</sub>	15423-57-1	287-288	116

	$\alpha$ -Muurolene	C <sub>15</sub> H <sub>24</sub>	10208-80-7	271-272	107
	$\gamma$ -Muurolene	C <sub>15</sub> H <sub>24</sub>	1460-97-5	272-273	107
	isobornyl acetate	C <sub>12</sub> H <sub>20</sub> O <sub>2</sub>	125-12-2	220-224	84
	$\delta$ -Cadinene	C <sub>15</sub> H <sub>24</sub>	483-76-1	277-278	38
Others	pinocarveol	C <sub>10</sub> H <sub>16</sub> O	5947-36-4	217-218	90
	terpinen-4-ol	C <sub>10</sub> H <sub>18</sub> O	562-74-3	208-210	79
	$\alpha$ -Terpineol	C <sub>10</sub> H <sub>18</sub> O	10482-56-1	217-218	90
	spathulenol	C <sub>15</sub> H <sub>24</sub> O	6750-60-3	284-285	124
	caryophyllene oxide	C <sub>15</sub> H <sub>24</sub> O	1139-30-6	301-302	110
	$\tau$ -Cadinol	C <sub>15</sub> H <sub>26</sub> O	5937-11-1	272-334	128
	$\alpha$ -Cadinol	C <sub>15</sub> H <sub>26</sub> O	481-34-5	303-304	128
	sclareol	C <sub>20</sub> H <sub>36</sub> O <sub>2</sub>	515-03-7	218-220	169