



Article

Urban Drainage Networks Rehabilitation Using Multi-Objective Model and Search Space Reduction Methodology

Ulrich A. Ngamalieu-Nengoue , Pedro L. Iglesias-Rey and F. Javier Martínez-Solano

Department of Hydraulic Engineering and Environment, Universitat Politècnica de València, Camino de Vera s/n., 46022 Valencia, Spain; piglesia@upv.es (P.L.I.-R.); jmsolano@upv.es (F.J.M.-S.)

* Correspondence: ngamaleuulrich@yahoo.fr; Tel.: +34-60-235-1229

Received: 10 April 2019; Accepted: 6 June 2019; Published: 8 June 2019



Abstract: The drainage network always needs to adapt to environmental and climatic conditions to provide best quality services. Rehabilitation combining pipes substitution and storm tanks installation appears to be a good solution to overcome this problem. Unfortunately, the calculation time of such a rehabilitation scenario is too elevated for single-objective and multi-objective optimization. In this study, a methodology composed by search space reduction methodology whose purpose is to decrease the number of decision variables of the problem to solve and a multi-objective optimization whose purpose is to optimize the rehabilitation process and represent Pareto fronts as the result of urban drainage networks optimization is proposed. A comparison between different model results for multi-objective optimization is made. To obtain these results, Storm Water Management Model (SWMM) is first connected to a Pseudo Genetic Algorithm (PGA) for the search space reduction and then to a Non-Dominated Sorting Genetic Algorithm II (NSGA-II) for multi-objective optimization. Pareto fronts are designed for investment costs instead of flood damage costs. The methodology is applied to a real network in the city of Medellin in Colombia. The results show that search space reduction methodology provides models with a considerably reduced number of decision variables. The multi-objective optimization shows that the models' results used after the search space reduction obtain better outcomes than in the complete model in terms of calculation time and optimality of the solutions.

Keywords: drainage networks; extreme rainfalls; problem size reduction; rehabilitation; multi-objective optimization; SWMM

1. Introduction

Urban drainage networks experience failures in their operation due to aging and other structural problems, but also due to urbanization and climate change, which is affecting the intensities and frequencies of extreme rainfall events. One of the objectives of rehabilitation is to avoid the consequences of extreme events. Drainage networks should be adapted to the new climatologic and environmental conditions. Jeong et al. [1] said that if a rainfall event is higher than the infrastructure facilities' capacity, their neighboring assets will be spoiled, and this will provoke a flood. Climate change adaptation in the infrastructure sector mitigates these damages by expanding the capacity of existing facilities or by installing new ones. According to Quinn et al. [2], extreme events cause damages to public infrastructures, so they presented a methodology composed of an adaptation strategy and an implementation plan allowing transport infrastructures to mitigate the climate change effects with an aim to avoid service disruption and the associated financial costs. Additionally, to ensure flexibility when incorporating new knowledge, the implementation of their methodology aims to help users

assess their adaptation grade and try to strengthen it. Szewrański et al. [3] developed a pluvial flood risk assessment tool to support stakeholders in rainwater management and adapt existing networks to climate change. Their tool implements spatial identification of flooding vulnerable areas and can be used in areas with different sizes. This tool can be used for identifying rainfall flood risk in a new developed area and help in flood monitoring in disaster recovery centers. Jeong et al. [1] showed how adaptation costs could be managed through a framework based on game theory. The aim of their study was proposing a suitable framework to allocate adaptation costs among local governments. One of the conclusions of the work of Jeong et al. was that the allocation of costs of climate change adaptation among stakeholders allowed them to solve some conflicts. Silva and Costa [4] enumerated the challenges faced by climate change adaptation and referred to public space as a powerful way to help in climate change adaptation. In addition to the fact that public space promotes adaptation action and help reduce risk of catastrophes, public spaces improve awareness of climate change. Therefore, everybody should be a public space manager in the sense of helping with climate change adaptation. The involvement of people and communities in the urban vulnerability management leads to adequate solutions in adaptation to climate change. These studies clearly show that adaptation is an important process to overcome the problem such as floods caused by extreme rainfall events.

There are different approaches in the literature to reduce or eliminate floods. There are traditional solutions based on the replacement of existing conduits by others of greater capacity. Other more recent solutions are based on the control of generated runoff. These are called Low Impact Developments (LID). Additionally, there are solutions based on the operational control of the network. These are the so-called Real Time Control (RTC) solutions, based on operating the different elements of the network in order to reduce concentration times and minimize flooding. Lastly, there are methodologies based on the application of several of the previous techniques. These generally use optimization algorithms that can be single or multi-objective.

Zhang et al. [5] proposed a traditional engineering method consisting of increasing pipes' capacity and the use of the free space as storage environment during extreme events. The main objective was to increase the response time and reduce the overflow at the wastewater treatment plant. The increase of pipe diameters alone was not adequate to eliminate overflow. Prasad et al. [6] developed a comprehensive list of parameters affecting stormwater pipe performance. They also developed a performance index using a fuzzy inference method to capture interdependencies among parameters. Sedimentation is a phenomenon that seldom occurs in conduits and has the following consequences: reduction of the cross section of the conduit, reduction of the transportation capacity, and provoking of floods. Pipe characteristics determine the structural condition. In that way, frequent maintenance is needed to solve sedimentation and blockage problems. Song et al. [7] carried out a study on the prevention of sedimentation in urban drainage conduits. They concluded that sedimentation should be taken into consideration when a drainage network is designed. Song et al. showed that low velocity of incoming sludge and big particle sizes promote sludge deposition and reduce pipes' transportation capacities. In recent years, canalization was used to reduce floods. It has been substituted by other methods due to its ineffectiveness ahead of floods caused by environmental conditions and urbanization adverse effects [8].

The other method considered to solve this problem is the RTC. According to Kroll et al. [9], sewer network managers hesitate to implement RTC to manage their system. They proposed a strategy for RTC and they obtained satisfactory results in terms of CSO reduction. They concluded that RTC strategy achieves better results when the control locations are well selected. Vermuyten et al. [10] presented a meta-heuristic approach based on a genetic algorithm and a predictive control model for flood RTC. Their algorithm did not find the optimal solution, but rapidly converged to a solution near of the optimal one. For the same optimal control parameters, their approach provided better results in damage costs reduction than the programmable logic controller (PLC) did. Direct flood mitigation implies a risk of failure due to unexpected structural defections that can occur during rainfall events.

Therefore, despite the effectiveness of RTC in reducing flood damages, network managers hesitate to implement this option.

There are preventives methods implying that actions must be taken to avoid the occurrence of floods. Therefore, the notion of risk arose. The idea is to identify the flood risks and take necessary structural and non-structural actions to prevent their occurrence. Salinas-Rodriguez et al. [11] presented the difference between the standards-based approach, which has many limitations, and the risk-based approach, which include flood hazard and impact assessments. Their method involves stakeholders when defining risk level, which prevents and gives a variety of possible actions for the network adaptation against frequent, extreme rainfall events. The method also requires drawing the flooding risk map of the study area. Implementing the approach will be useful in drainage network management and help to deal with extreme rainfall events. Scionti et al. [8] proposed a quasi-2D model composed of the 1D model simplicity and the 2D model having the ability to better represent the surface flows and connected it to MODCEL, which can discretize the urban area in cells where rainfall-runoff transformation is operated. The flood risk index considered in the study links the flood level to flood damage cost and the model provides important data in terms of flood risk and level for critical areas and various scenarios of flood reduction. The methodology is a decision support tool that can allow the localization, assessment, and comparison of flood risk's determining areas and grade. Caldas et al. [12] studied the flood vulnerability of Batatais municipality in Sao Polo, Brazil. All the parameters used to characterize the flood vulnerability have been evaluated through the analytic hierarchy process (AHP) method. Vulnerability maps were drawn based on geographical information system (GIS) assets and historic flood events. Effects of flood intensity have been presented for environmental land use conflicts and results showed that the vulnerability area in that municipality occupied 60% of the area. Such studies would be helpful in the adequate use of soil and water resources of the region. Decision-makers prefer implementation of grey measures, which are suitable for moderate rainfall events. Additionally, green measures are effective against excess runoff. Alves et al. [13] combined both measures in an approach to make it reliable and adaptable to climate change effects. The approach considers multi-criteria decision analysis, which provides results in the form of information to help decision-makers select the suitable solution for their specific problem. A tool implementing the methodology has been carried out and applied to cases studies and the results showed that the tool is reliable, helpful, and convenient. For flooding mitigation, Kolen and Van Gelder [14] proposed a risk-based decision model. This is a tool providing a set of decisions to be implemented by decision-makers to plan evacuation and reduce flood damage costs and life loss. Elaboration and implementation of an evacuation diagram would be useful in reducing the loss of life during floods. A risk-based approach seems to be an effective method for flood prevention especially in urban network adaptation, but they can face the problem of implementation by the managers or decision-makers. All the preceding studies are related by the fact that they are solutions of adapting the drainage network to new climatic and environmental conditions. Even if those approaches are reliable in some situations such as those they solve, they, unfortunately, become inefficient with time. The need to implement better solutions is then required.

A new trend in recent decades consisted of installing some hydraulic assets to reduce the conductivity of the runoff or to store the excess of water during rainfall events and later re-introduce that water in the system and convey it to a water treatment plant. These assets are designated by several names: Green Infrastructures, Best Management Practices, Sustainable urban drainage, and Low impact development practices. There are many studies in the literature implementing those measures. Song et al. [15] proposed a water management analysis module (WMAM) framework based on Low Impact Development (LID) practices integrated box in SWMM to establish a reliable design and plan parameters related to LID practices implementation. The methodology has been applied for an infiltration trench and the results showed that they considerably reduce runoff. The WMAM leads to defining an adequate design of the LID and the corresponding parameters while reducing flooding. De Paola et al. [16] implemented a Decision Support System on two cases studies using

SWMM as a hydraulic analysis tool and Harmony search as an optimization method. The aim of their study was to reduce the flooding volume while minimizing the objective function. The proposed strategy started with territorial analysis in the Geographical Information System (GIS), which was followed by a setting of the network, and, finally, an optimization. In the context of extreme rainfalls, the proposed model can select and implement adequate LID practices to reduce floods and ensure minimal investments. Xiao et al. [17] evaluated the effectiveness of bioswales on stormwater runoff quality and quantity. Their treatment bioswale eliminated more than 99% of surface runoff, but this ability of the bioswale gradually decreased due to the underlying soil layer saturation. It was also effective in removing pollutants and support tree growth in an urban landscape. Integrate Engineering Soil Mixed in Bioswales is an effective solution for stormwater runoff reduction. Martínez et al. [18] proposed a framework aiming to select and install green infrastructure between Bio-retention cells, infiltration trenches, porous pavement, and vegetation swales. The main objective of their study was urban runoff reduction and improvement of water quality while reducing investment costs. To achieve it, SWMM was connected to non-dominated sorting genetic algorithm II (NSGA-II) for simulations and optimization. Pareto fronts were presented for flooding volumes against investment costs and for pollution loads against investment costs. For the same investment amount, a smaller number of porous pavements needed to be installed to achieve good results for any type of rainfall events. Hu et al. [19] used three types of pavement to investigate their capacity on flood reduction and the effects of clogging and first water quality on permeable pavement performance in a sponge city. Twelve scenarios were generated, and the results showed that permeable pavements reduced urban runoff and that clogging affected the performance of permeable pavements. The limit of their study was the reduced number of calibration and validation information. The earliest water quality reduces pavement performance, but permeable asphalt implementation provides better results. Leimgruber et al. [20] studied the impact of the installation of 3 LIDs on the water balance using long-term simulation. They wanted to provide the influential parameters list to practitioners. Results should be integrated in a complete water balance considering LID configured in SWMM. Unfortunately, results of Leimgruber et al. showed that, by increasing the substrate thickness of green roofs, the retention rate increased. Green roof runoff retention capacity lays on various parameters. Therefore, Gong et al. [21] studied the effects of various parameters on the green roof runoff retention capacity for several rainfall events and 10 extensive green roof modules. Their results showed that green roofs were effective for rainfall events of moderate intensity and were affected by extreme rainfall events. Mora et al. [22] also obtained results showing that green roofs as LID practices are efficient for moderate rainfall events, but their implementation cannot prevent the generation of flood for extreme rainfall events. Therefore, green infrastructures are effective for moderate rainfall events but cannot deal with extreme rainfall events. Therefore, there is a necessity to have a better asset to overcome this problem.

The last category of authors considered that the drainage network simply must be rehabilitated based on the objectives to achieve. Rehabilitation strategies of single-objective or multi-objective have been proposed. Vojinovic et al. [23] proposed a multi-objective approach for drainage network rehabilitation. Appropriate modifications were operated in SWMM. Latin Hypercube Sampling was used to sample statistical distribution and uncertainty while NSGA-II was applied to provide the set of optimal solutions. Two approaches were implemented. The first considers uncertainty in objective function, which provided the best results globally and the second considers uncertainty in the optimization process. To achieve strong results, uncertainty impacts should be considered in drainage network optimal rehabilitation. Lim et al. [24] presented a drainage network multi-objective rehabilitation approach considering the installation of detention facilities and the optimization of their locations and capacity by a multi-objective genetic algorithm. The aim was total overflow reduction while minimizing investment. The methodology will be helpful for managers in the effective selection and installation of retention assets in drainage networks. What they did not consider in their study is the substitution of pipes and they did not consider search space reduction. In this work, we consider both pipe renewal and storm tank installation. In addition, a search space reduction

model resolution is proposed and compared with the complete model rehabilitation. Xu et al. [25] proposed a rehabilitation methodology to improve the capacity of drainage networks in the city of Fuzhou, China. Their methodology considered climate change and adopted a periodic installation of storage facilities as well as pump to reduce flood damages while reducing the investment costs. It was suggested that the methodology be implemented throughout the city of Fuzhou. Yazdi [26] proposed an optimal methodology for drainage networks rehabilitation and flooding mitigation, which considers effects of unexpected structural failures during rainfall events. To achieve this, he connected SWMM to non-dominated sorting differential evolution to track the set of optimal solutions. Martínez et al. [27] presented a multi-objective approach combining the 1D/2D model to an NSGA-II to rehabilitate drainage networks in order to help them in the process of adaptation to climate change and reduction of flood damage costs. The major inconvenience of the methodology was that it needed elevated calculation time to find the set of optimal solutions. The combined use of pipes substitution and storage facilities installation provides better results than each measure implemented alone. Ngamalieu-Nengoue et al. [28] proposed a single-objective optimization method to reduce the search space of the problem and reduce the calculation time while obtaining better results. The NSGA-II [29], which includes an elitism consisting of keeping two individuals in each generation was proposed by Ngamalieu-Nengoue et al. [30] to solve multi-objective rehabilitation of drainage networks considering pipes substitution and storm tanks installation. Drainage network rehabilitation considering pipe substitution combined with storm tank installation presents good results, but the elevated calculation time needed to obtain them is a serious problem that can hinder the obtainment of the global optimal solution.

A new challenge in the optimization of water resources management is the reduction of the computation time and the obtainment of better results. To achieve this, some authors proposed the reduction of solution space to help the optimization algorithm find the optimal solution by providing it a better exploration capacity. Maier et al. [31] presented the new challenges such as reduction of solution space and applied them to water resource management, while Sophocleous et al. [32] proposed the reduction of solution space to the leak localization in real water distribution. After the assessment of the robustness of their methodology, it could be applied in the industry.

The state-of-the-art discussion shows that, to adapt networks to climatic conditions, authors concentrated more efforts to work on methodologies such as RTC that network manager hesitate to implement. They also dedicated many studies on LID implementation, which is inefficient for extreme rainfall events. The reduction of search space as a new challenge is a good approach to reduce computation time in water resource management. Therefore, the main objective of this study is to propose multi-objective optimization for an urban drainage network rehabilitation strategy that first apply a search space reduction methodology to reduce the size of the addressed problem. Then a multi-objective evolutionary algorithm is applied for the optimization of the search space reduction model obtained. The methodology considers pipes substitution and storm tank installation in the network.

2. Problem Formulation

Drainage networks are civil engineering infrastructures present in several countries around the world. Their main mission is to drain rainfall water of the cities where they are installed.

During recent decades, rainfall intensities and frequencies increased by converting them into extreme rainfalls events, which caused insufficiencies to drainage networks. The network capacity is reduced, and floods appear. In this work, a two-parts methodology to solve this problem is presented.

The starting hypotheses considered are below.

- Scenarios damaging the networks considerably are those that should be used during the optimization process. The rehabilitation will be operated considering only the worst scenario obtained.
- The rain-runoff transformation considered in this study is one within SWMM models, which is named the Curve Number model. Basically, SWMM is composed of three different models for

the rainfall-runoff transformation. Horton, Green-Ampt, and the Soil Conservation Service (SCS) Curve Number models. The latter option was adopted due to the fact that it was the simplest one and there is only one parameter needed, which is the Curve Number. Once the rainfall-runoff transformation has been calculated, the hydraulic model just takes into account inflows at nodes instead of precipitation scenarios.

- There are various calibration models and the calibration of the network is important, which can be seen in these papers [33–35], but calibration is beyond the scope of this work. Therefore, SWMM [36] will be used and the hydraulic model of the drainage network will be the starting point of the process. The model will be analyzed using a dynamic wave model to obtain a better representation of flood rather than the uniform flow, which is generally used in this case.
- Every model must be simplified. Therefore, the accuracy of the result must not be compromised. The aim of the simplification is to highly reduce calculation times of each hydraulic simulation.
- The corrective actions will be storm tank installations and pipe diameter modifications. The volume of tanks will be calculated and assigned to those to be installed and new diameters of pipes will also be calculated and assigned. A full range of commercial diameters and their installing costs is provided [28].
- Storm tanks to install will have the following characteristics: single chamber, in-line tank, and no control device. The storm tanks will be installed on the corresponding node location and only the base area will be modified, according to the calculated value.
- It is in monetary units that the optimization problem will be addressed. First, hydraulic variables will be defined as monetary units in some cost functions, as presented by Cunha et al. [37] and Ngamaliu-Nengoue et al. [28].
- Heuristic approaches will be effective to optimize the mathematical formulation of the problem. Based on precedent studies, a pseudo-genetic algorithm [38] method is used.

The approach rehabilitates the drainage network by renewing pipes and installing storm tanks in some nodes. The problem encountered in this case is that the calculation time is elevated, and the objective function best value is caught up in a local minimum. The probability to obtain a repetitive solution is elevated. Due to a wide solution space, the search of the best solution is difficult. The aim of this work is to propose a multi-objective optimization methodology of drainage networks. The methodology first applies a search space reduction methodology to reduce the size of the addressed problem. A multi-objective evolutionary algorithm is then applied to the optimization of the reduced problem size obtained.

2.1. Cost Functions

To assess rehabilitation costs, there are three terms: pipe substitution costs, storm tank installation costs, and flooding costs. These costs represent mathematical values in monetary units. The following presents the expressions of those cost functions.

2.1.1. Pipe Substitution Cost Function

From real data supplied by pipe manufacturers, a mathematical formulation to express the cost of pipe installation in Euros per meter has been carried out. This cost depends on the diameter of the pipe to be installed. The cost grows with the diameter size.

$$C_C(D_i) = A \cdot D_i + B \cdot D_i^2 \quad (1)$$

In Equation (1), A and B represent adjustment coefficients.

2.1.2. Storm Tank Installation Cost Function

Depending on the calculated volume of a storm tank (V_j) that can be installed on a node of the network to collect and store extra water during extreme events, this cost function can be defined by using real data supplied by manufacturers. These tank's sizes can be small and medium with the aim to expand the storage capacity of the nodes or the original installed storm tanks existing in the network. The first term of the formulation represents the minimum cost relative to the construction (C_{min}) and the second term depends on the total volume through a constant (C_{var}) and an exponent (n). The first term is fixed while the second is variable.

$$C_T(V_j) = C_{min} + C_{var} \cdot V_j^n \quad (2)$$

2.1.3. Flood Damage Cost Function

In the literature, flooding is considered to be a volume for some authors [39] while other authors consider flooding as the highest depth reach by the water (y) out of the network. According to Lee and Kim [40], flooding damage is different from flooding volume. They showed that some sub-areas can be immediately damaged by a certain amount of flooding while other sub-areas are not, which confirms that flood damage depends on the land use. Since flood damage costs represent the damages provoked by the flooding, Lee and Kim [40] represented flood damage costs in function of the depth reached by water. On the base of their model, the flood damage cost function was expressed as a function of the depth (y) of the flooding.

The ponded area model proposed by SWMM defines the ponded area (A_p) related to each node. Then, by dividing the flooding volume (V_{fl}) by the ponded area, the highest depth reached by the water or the flood level can be obtained. Flood damage cost is given by the following equation.

$$C_I(y_k) = C_{max} \cdot \left(1 - e^{-k \frac{y_k}{y_{max}}}\right)^2 \quad (3)$$

In Equation (3), C_{max} stands as the maximum cost per square meter that a flooding can cause. The constant (y_{max}) is the fixed depth where the damage is considered as irrecoverable so that it stops the increase of the function, which causes the attainment of the maximum cost value ($V_{max} = 1.4$). The exponent k is an adjusting coefficient based on historical data of damages provoked by flooding ($k = 4.89$). In all cases, Equation (3) depends completely on the value of C_{max} whose values are presented in Table 1.

Table 1. C_{max} values for different social Stratum (Str) linked to land uses.

Land Use	Str. 1	Str. 2	Str. 3	Str. 4	Str. 5	Str. 6	Commercial	Industrial	Average
C_{max} (€/m ²)	142	245	257	584	732	1168	3975	3041	1267

2.2. Objective Functions

When an optimization problem is addressed, there is always an objective function to optimize. In this study, the problem size reduction is based on the optimization of a single objective function. The obtained values of the optimization are ranked in order to perform the selection of nodes and conduits, which allow the formation of the reduced problem size. That is the reason why a single-objective function is presented. The multi-objective optimization, which is the main optimization to be operated in this study, is characterized by two conflicting objective functions. They are represented by the investment costs and by the flood damage costs. More investments reduced flood damage costs and vice versa.

2.2.1. Problem Size Reduction Methodology: Single Objective Function

The main objective of the optimization is the minimization of the objective function. In the case of the search space reduction methodology, the objective function (F) is the sum of the three cost functions presented. The obtained results represent a monetary value of the total cost necessary to rehabilitate the network. The mathematical expression is represented by Equation (4).

$$F = \sum_{i=1}^{N_C} C_C(D_i) \cdot L_i + \sum_{j=1}^{N_T} C_T(V_j) + \sum_{k=1}^{N_N} C_I(y_k) \cdot A_k \quad (4)$$

where N_C represents the total number of conduits in the network, N_N represents the total number of nodes in the network, and N_T represents the total number of storm tanks installed in the network.

2.2.2. Multi-Objective Optimization

In this part of the methodology, the objective is to minimize two conflictive objective functions. The first represents the investment costs and the second represents the flood damage costs. These functions are linked such that, if more investments are made, flood damage costs will be reduced reciprocally.

Equation (5) represents the investments costs (F_1) composed of pipe substitution costs and storm tank installation costs. Equation (6) represents the flood damage costs. The two objective functions express hydraulic values in monetary units as presented in the hypothesis of the work.

$$F_1 = \sum_{i=1}^{N_C} C_C(D_i) \cdot L_i + \sum_{j=1}^{N_T} C_T(V_j) \quad (5)$$

$$F_2 = \sum_{k=1}^{N_N} C_I(y_k) \cdot A_k \quad (6)$$

In Equations (5) and (6), N_C represents the total number of conduits in the network, N_N represents the total number of nodes in the network, and N_T represents the total number of storm tanks installed in the network.

3. Methodology

The proposed methodology of this work is composed of two complementary parts that together form a complete drainage network optimal rehabilitation methodology. The first part is called Search space reduction and it reduces the number of decision variables of the addressed problem. The problem size is reduced. Once the problem size is reduced, if an optimization is applied to this search space reduction model, the computation time will be reduced due to the reduction of local minima. This will result in the obtainment of better results, respectively, to the optimization of the complete model. The second part is the application of a multi-objective evolutionary algorithm that can be applied to any drainage network. The aim of this part is the optimization of the new model obtained from the problem size reduction. The flow chart of the proposed methodology is presented in Figure 1.

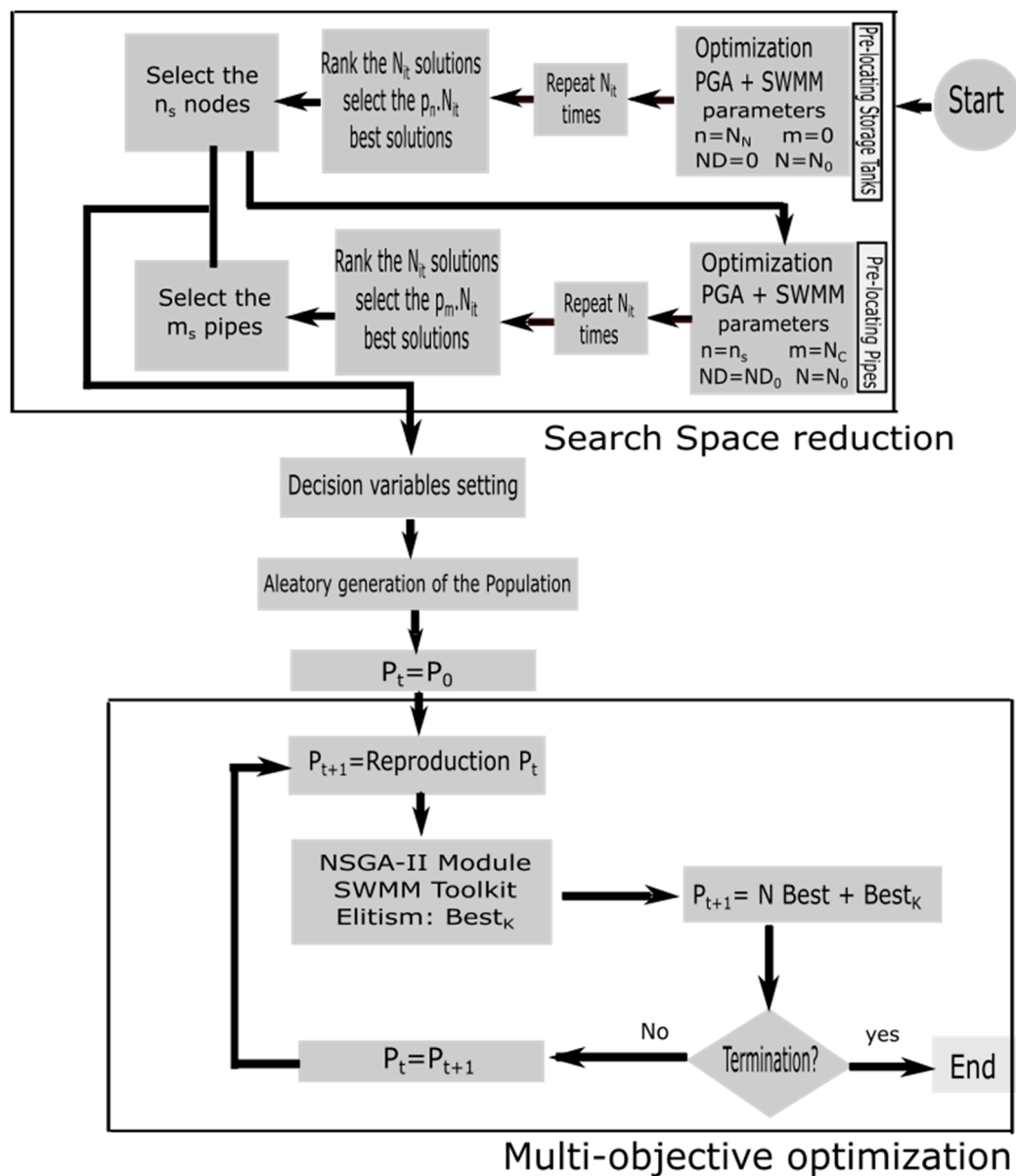


Figure 1. Flow chart of the presented methodology.

The first part of the methodology proposed in Figure 1 presents two steps. The first one is the pre-location of nodes where storm tanks can be installed. The second step is the pre-selection of lines where pipes could likely be substituted. After the application of those two steps to a complete model of drainage network rehabilitation, a new model of a reduced problem size is obtained. This new model goes through a multi-objective optimization described in the second part of the methodology.

Flood damages depend on the rainfall probability, so they cannot be well known in advance. In the first step of the methodology, two types of costs are used in the objective function: construction costs that are real costs and flood damage costs that are futuristic costs. These two types of costs are conflicting in this situation. On the one hand, construction costs are increasing while, on the other hand, flood damage costs are decreasing and vice versa. One of the best ways to harmonize both types of costs is to introduce a multi-objective evolutionary algorithm connected to a mathematical model of the drainage network. The second part of the proposed methodology will consist of the application of a multi-objective optimization algorithm to the reduced problem size obtained in part one and a comparison of the obtained results with those of the whole problem optimization will be performed.

3.1. Search Space Reduction: Single Objective Function

This part of the methodology is presented on the top of Figure 1. The aim of this part of the proposed methodology is to reduce the search space of the problem. Decision variables are gradually eliminated to form a new rehabilitation scenario. Additionally, the obtained results found by the PGA are better than those obtained when the entire search space was used. The different options implemented in this part of the methodology to reduce the problem size include the following.

- Reduce the number of decision variables (nodes where storm tanks can potentially be installed and lines in which there could potentially be a change in diameter).
- Reduce the variation range of decision variables (Discretization in the storm tanks dimensioning and reduction of the candidate diameters that can be selected).

3.1.1. Pre-Locating Storm Tanks

The first step of this part of the proposed methodology is the pre-location of the storm tank. To achieve it, some N_{it} simulations are performed with all the nodes of the network ($n = N_N$) considering their cross section (S) as a decision variable. The storm tanks to be installed are discretized in $N = N_0$ divisions that aim to reduce solution space, for the optimization with PGA. For this optimization process, the diameters are not included ($m = 0$). This means that there is no pipe renewing in this step.

After these simulations, obtained solutions are ranked from the best objective to the worst objective function value of Equation (4). A percentage p_n of the best solutions is selected. An analysis of these solutions creates a list of n_s possible storm tank locations. In fact, these nodes are locations where storm tanks can be installed during the rehabilitation of the network. These nodes are considered because they are repeated locations of a storm tank installation within all the p_n selected solutions.

3.1.2. Locating Lines of Possible Pipe Substitutions

The second step of this part of the proposed methodology is the pre-selection of pipes to be substituted. To achieve it, some N_{it} simulations are performed, which consider the n_s selected nodes cross sections combined with all the pipes ($m = N_C$) of the network as decision variables. To ensure solution space reduction, storm tanks to be installed are discretized in $N = N_0$ divisions while the number of candidate pipes' diameters is $ND = ND_0$.

After the simulations, obtained solutions are also ranked from the best to the worst objective function value of Equation (4). A percentage p_m of the best solution is selected. An analysis of these solutions creates a list of m_s possible pipes to be substituted locations. These pipes are located where substitution can occur if the network is rehabilitated. These nodes are selected because they are repeated locations of a pipe substitution within all the p_m selected solutions.

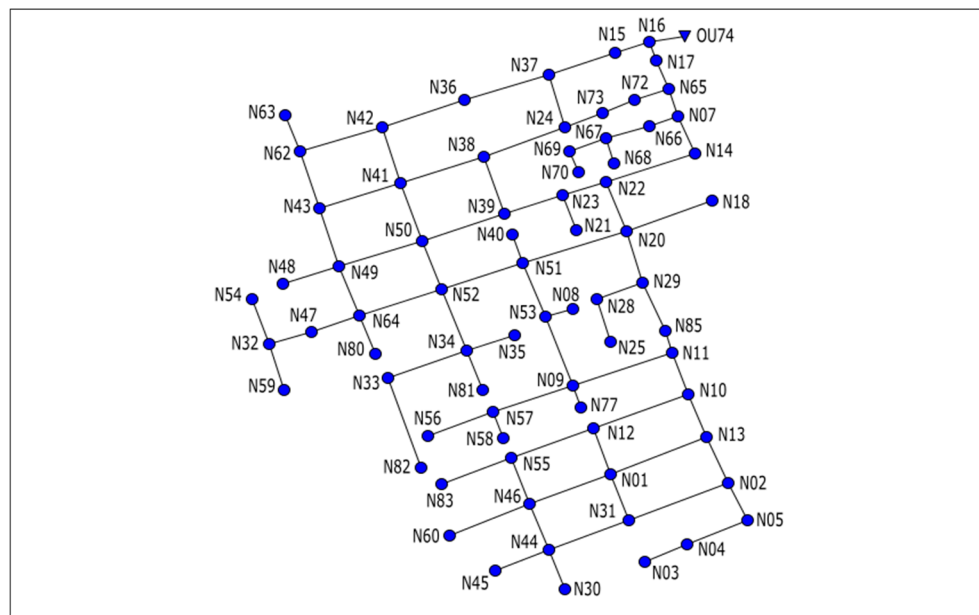
3.2. Multi-Objective Optimization: Optimization Algorithm

After the obtainment of a search space reduction model, a multi-objective evolutionary algorithm is applied to this model and the obtained results are analyzed. Two important key elements are considered, which include the best result in terms of the Pareto front and the smallest simulation time. This part of the methodology is presented on the bottom of Figure 1.

Deb et al. [29] introduced NSGA-II, which is one of the most popular multi-objective evolutionary algorithms. NSGA-II has been implemented in various domains to solve real world problems. In this work, an additional elitism aspect has been added consisting for each generation in the selection of the best individual and the zero-investment individual, to be part of the next generation. The stop condition adopted in the methodology has the best values of the objective function of Equations (5) and (6). If, after a certain number of generations, there is no improvement in their values, the optimization process stops. The standard deviation of crowding distance aims to ensure the equal distribution of the Pareto front solutions. If the standard deviation is smaller, the solution would be better.

4. Case Study

In order to test the methodology mentioned above, a sub-catchment of the drainage network of Medellín city (Colombia) was used. The part of the drainage network studied is generically known as Ayurá district. The drainage network flows into the Medellín River, which cross the city from South to North. The network is extended over 22.5 ha and is divided into 83 hydrological sub-catchments for 73 nodes and 86 circular conduits from 200 to 1050 mm diameters. The difference between the highest point and the lowest point of the network is 15.61 m. The network works completely by gravity, since the terrain profile is favorable for the drainage of rainwater. The methodology has been applied to various networks, but Ayurá has been selected for this paper due to the elevated number of conduits and nodes and to the fact that Ayurá is a mesh network. Figure 2 presents the Ayurá network.



To sum up, the preliminary analysis of the network shows that it is unable to drain the selected project rain. Therefore, the Ayurá drainage network was considered adequate to apply the proposed rehabilitation methodology of this work.

Any simulation is only possible after the definition of all the data in the expression of the objective functions. Basically, this means define the following parameters: A and B of Equation (1) and C_{\min} , C_{var} , and n of Equation (2). The values considered are price databases established for the area where the network is located (Colombia). These values are shown in Table 2.

Table 2. Coefficients for pipes and storm tank cost curves.

A	B	C_{\min}	C_{var}	n
40.69	208.06	16,923	318.4	0.65

Table 3 presents the full range of pipe diameters (D) and respective installation cost (C) of each diameter. There are $ND = ND_{\max} = 25$ parameters considering the 24 probable diameters than can be installed and the state corresponding to no action taken on the original pipe. The application of parameters in Table 2 to Equation (1) obtains the different installation costs of commercial diameters.

Table 3. Full range ($ND = ND_{\max}$) of commercial diameters used in the example.

D (mm)	300	350	400	450	500	600	700	800	900	1000	1100	1200
C (€/m)	30.93	39.73	49.56	60.44	72.36	99.31	130.43	165.71	205.15	248.75	296.51	348.43
D (mm)	1300	1400	1500	1600	1800	1900	2000	2200	2400	2600	2800	3000
C (€/m)	404.51	464.76	529.16	597.73	747.35	828.4	913.61	1096.52	1296.07	1512.27	1745.11	1994.6

The first rehabilitation process has been performed to the whole network, which considers decision variables of all the 73 nodes and all the 86 lines, which are specifically defined as:

Complete Model: Rehabilitation of the network combining the installation of conduits and storm tanks. The total number of decision variables is 159.

The complete model is reduced after the application of the search space reduction (SSR) methodology and various search space reduction models can be obtained based on the selection probability.

Search space reduction model 1 for 10% selection probability: The number of conduits and nodes where action can be taken is reduced.

The search space reduction model 2 for 5% selection probability: The number of conduits and nodes where action can be taken is reduced.

Another selected probability will give another search space reduction model.

5. Results

5.1. Application of the Problem Size Reduction Methodology to Ayurá: Single-Objective

The application of the first part (Search space reduction) of the proposed methodology (Figure 1) to the Ayurá network starts with the process of pre-locating storm tanks. The parameters considered in this process are defined as:

- The number of simulations defined is one hundred ($N_{it} = 100$).
- The discretization of the storm tanks area is reduced to its minimum value ($N = N_0 = 10$).
- Only the sections of the tanks potentially to be installed in the nodes of the network are considered as Decision Variables ($n = N_N = 73$).
- Conduits are not decision variables during the process ($m = 0$).
- The basic parameters of the PGA algorithm, population size ($N_{pop} = 200$), and the stopping criterion based on a number of generations (N_{gen}) without change, is fixed at 100.

After the obtainment of all the simulation results, there are ranked and the percentage of p_n best solutions in terms of the objective function value is selected. This corresponds to the selection of 10 best solutions. It is analyzed for each solution in which nodes of a storm tank has to be installed. At the end of this analysis, a list of storm tanks pre-location in the network is created. This analysis for Ayurá provides a list of 29 possible locations of storm tanks represented in Figure 4.

N01	N02	N03	N04	N05	N07	N08	N09	N10	N11	N12	N13	N14	N15	N16
N17	N18	N20	N21	N22	N23	N24	N25	N28	N29	N30	N31	N32	N33	N34
N35	N36	N37	N38	N39	N40	N41	N42	N43	N44	N45	N46	N47	N48	N49
N50	N51	N52	N53	N54	N55	N56	N57	N58	N59	N60	N62	N63	N64	N65
N66	N67	N68	N69	N70	N72	N73	N77	N80	N81	N82	N83	N85		

Figure 4. Selected nodes (Green Color) as storm tanks pre-location.

The second step of the first part (search space reduction) of the proposed methodology (Figure 1) is the pre-selection of conduits. For this, the pre-locations of storm tanks are used and combined with all the conduits to perform simulations. A reduction in the number of potentially substitutable pipes is sought. The parameters considered in this process are defined by the following.

- The number of simulations is the same as in the previous stage ($N_{it} = 100$).
- The decision variables are the areas of the ($n_s = 29$) selected nodes of the first step and the diameters of all the conduits ($n = N_C = 86$) of the network.
- The discretization of the area of the storm tanks is kept at the minimum value, which happened with the previous step of the process.
- The basic parameters of the PGA algorithm are the same as in the previous phase ($N_{pop} = 200$, $N_{gen} = 100$).
- A range of reduced diameters is used instead of the full range of diameters in Table 3. The new set of the used diameters (D) and their installation costs (C) in this case are presented in Table 4. There are $ND = ND_0 = 10$ parameters considering the nine probable diameters that can be installed and the state corresponding to no action taken on the original pipe. The application of parameters in Table 2 to Equation (1) obtains the different installation costs of commercial diameters presented in Table 4.

Table 4. Reduced diameter range ($ND = ND_0 = 10$).

D (mm)	300	400	600	800	1000	1200	1500	1800	2000
C (€/m)	30.93	49.56	99.31	165.7	248.74	348.43	529.16	747.35	913.61

After the obtainment of all the simulations results, they are ranked and the percentage of p_m best solutions in terms of the objective function value is selected. In this work, two different conduit pre-selections have been settled. The first considers a probability of 10% of the best solutions ($p_{m1} = 10\%$) and the second considers only a probability of 5% of the best solutions ($p_{m2} = 5\%$). The pre-selected lines in each case are shown in Figures 5 and 6.

P01	P02	P03	P04	P07	P08	P09	P10	P11	P12	P13	P14	P15	P16	P17
P18	P19	P20	P21	P22	P23	P25	P26	P27	P28	P29	P31	P32	P33	P34
P35	P37	P38	P39	P40	P41	P42	P43	P44	P45	P46	P47	P48	P49	P50
P51	P52	P53	P54	P55	P56	P57	P58	P59	P60	P61	P62	P63	P64	P65
P66	P67	P68	P69	P70	P71	P72	P74	P75	P76	P77	P78	P79	P80	P81
P83	P84	P85	P86	P87	P88	P89	P90	P91	P92	P94				

Figure 5. Selected lines (Green Color) to potentially be replaced for $p_{m1} = 10\%$.

P01	P02	P03	P04	P07	P08	P09	P10	P11	P12	P13	P14	P15	P16	P17
P18	P19	P20	P21	P22	P23	P25	P26	P27	P28	P29	P31	P32	P33	P34
P35	P37	P38	P39	P40	P41	P42	P43	P44	P45	P46	P47	P48	P49	P50
P51	P52	P53	P54	P55	P56	P57	P58	P59	P60	P61	P62	P63	P64	P65
P66	P67	P68	P69	P70	P71	P72	P74	P75	P76	P77	P78	P79	P80	P81
P83	P84	P85	P86	P87	P88	P89	P90	P91	P92	P94				

Figure 6. Selected lines (Green Color) to potentially be replaced for $p_{m1} = 5\%$.

Lastly, the conduits pre-selection process permits selecting a total of 47 pipes for 10% of the best solutions and selecting a total of 39 pipes for 5% of the best solutions. These data show the reduction of the search space of the problem, which forms two new rehabilitation models that can go through a final optimization, which is the final step of the first part (search space reduction) of the methodology or can go straight to the second part (multi-objective) of the methodology. The two search space reduction models obtained are defined below.

- Search space reduction model 1: Rehabilitation of the network combining the possible installation of storm tanks on the 29 selected nodes and the 47 conduits that can be substituted.
- Search space reduction model 2: Rehabilitation of the network combining the possible installation of storm tanks on the 29 selected nodes and the 39 conduits that can be substituted.

To validate that the search space reduction methodology improves the results in single-objective optimization, a single-objective optimization is applied to the model SSR 1 and SSR 2. The simple rehabilitation methodology is applied to complete the model and the results are presented in Table 5 even though this is not the objective of this work.

Table 5. Problem size reduction methodology: Ayurá single-objective optimization process.

Model	No. Decisions Variables		Objective Function	Costs of the Objective Function			No. Elements in the Solution		Problem Size
	Nodes	Lines		Floods	STs	Pipes	STs	Pipes	
Complete	73	86	381 950	6 335	215 828	159 787	5	33	$7.8 \cdot 10^{122}$
SSR1	29	47	351 879	3 983	215 769	132 127	5	33	$1.9 \cdot 10^{100}$
SSR2	29	39	347 982	3 541	244 288	100 153	6	27	$1.8 \cdot 10^{98}$

Table 5 presents the obtained results of single-objective optimization for complete model and search space reduction model 1 and search space reduction model 2. These results are used to validate that the search space reduction methodology helps improve the single-objective optimization results even though the main objective of this paper is a multi-objective optimization. It also shows how to decrease the search space of the problem while reducing the decision variables number. It can be observed that, for single-objective search space reduction models (SSR 1 and SSR 2), optimization provides better results than the complete model optimization.

5.2. Application of Multi-Objective Evolutionary Methodology to the Reduced Problem Size of Ayurá: Multi-Objective

After the obtainment of the new rehabilitation models, the problem size reduction part of the methodology is closed. The SSR1 and SSR2 models undergo a multi-objective optimization through the NSGA-II algorithm.

The obtained results of those SSR models are compared with the ones of the complete model. To achieve it, this complete model is also submitted to the same multi-objective optimization. The parameters considered in this process are defined as:

- Crossover probability is fixed at 80% for all the scenarios.
- Mutation coefficients are calculated as the inverse of the number of decision variables.
- The discretization of the storm tanks area is fixed to its maximum value ($N = N_{max} = 40$).
- The full range of diameters (Table 3) is used ($ND = ND_{max} = 25$).
- For all the scenarios, population size ($N_{pop} = 200$) and ($N_{gen} = 100$).
- The number of simulations defined is 100 ($N_{it} = 100$).

For this second part (Multi-objective) of the methodology, 20 simulations were run for each presented model. The simulation time varied between 2 and 14 days for the complete model (73T86C) depending on the configuration and between 1 and 7 days for models SSR 1 (29T47C) and SSR 2 (29T39C) depending on the configuration. The complete model computation time is two times higher than the one of search space reduction models.

Figure 7 shows Pareto fronts of the three models with population 200 and the number of generations 30,000 for the complete model and 15,000 for models SSR 1 and SSR 2. It can be observed that SSR models give better results than the complete model resolution.

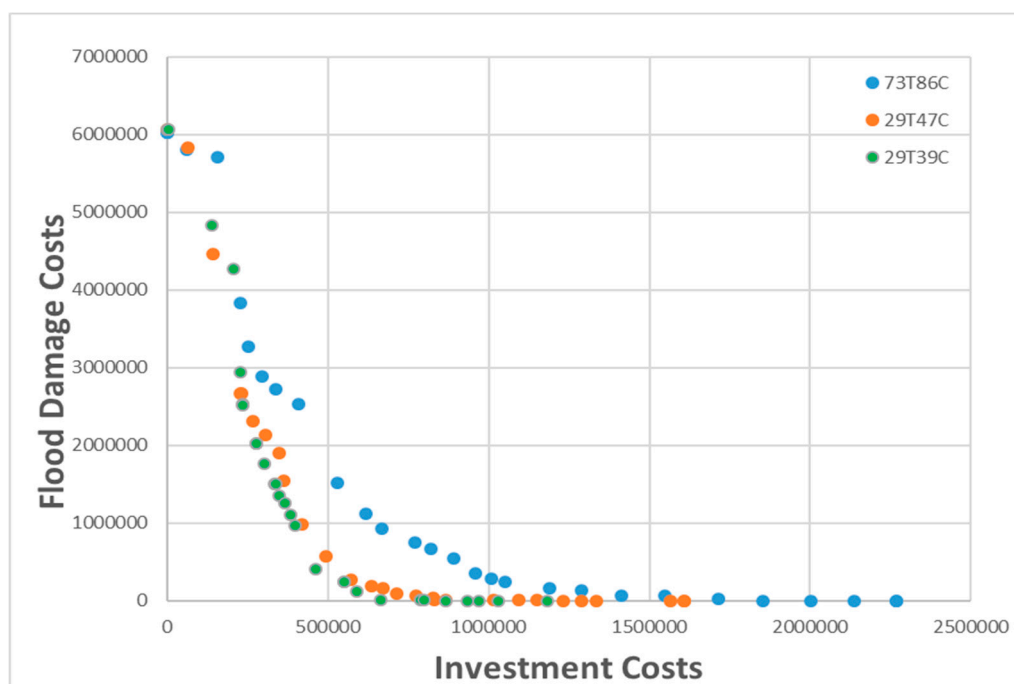


Figure 7. Pareto fronts representation of three different models.

The NSGA-II presents a set of feasible solutions instead of a single one. That is why the decision about the best solution depends on several factors such as budget availability, risk level, administrative regulations, and more. For this reason, a multi-objective algorithm was selected. As an example, the solution for the case of unlimited budget availability is presented. If there are no investment limitations, the solution will look for a model with no flooding. This scenario corresponds to the horizontal axis of

Figure 7. The solution for zero-flooding needs an investment of 2,269,492€ for a complete model or 1,607,890.49€ for the reduced model 1 and 1,183,543.31€ for the reduced model 2.

Actions that should be taken for the zero-flooding solution of model SSR 2 are presented in Figure 8. Storm tanks to install locations and pipes to be substituted are presented.

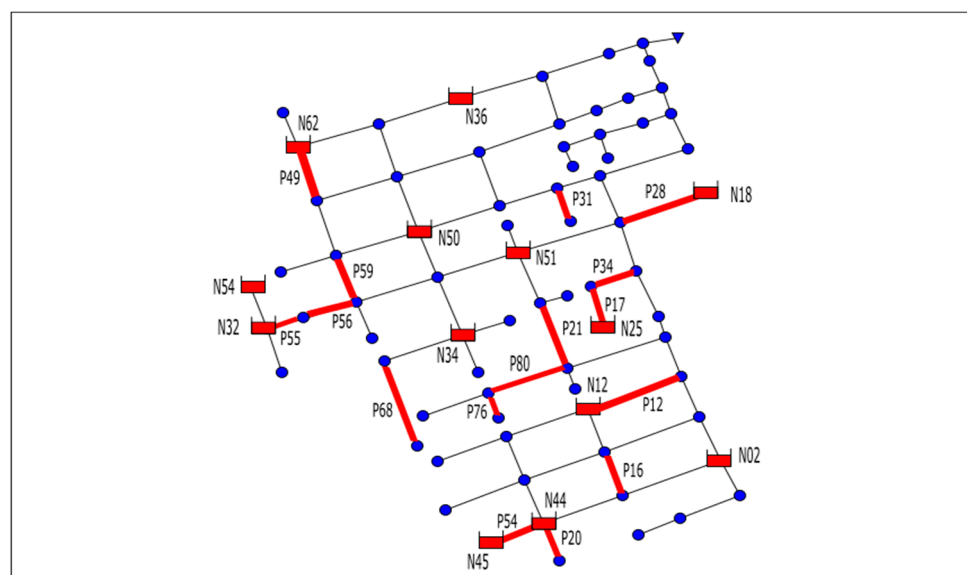


Figure 8. Representation of storm tanks installed and pipes to substitute according to model SSR 2 zero-flooding solution.

Table 6 presents the list of pipes to be substituted for the zero-flooding solution of model SSR 2 and their corresponding diameters.

Table 6. New pipe diameters according to the zero-flooding solution of the SSR model 2.

Pipes	P12	P16	P17	P20	P21	P28	P31	P34
D (mm)	300	350	600	600	300	3000	300	300
Pipes	P49	P54	P55	P56	P59	P68	P76	P80
D (mm)	350	3000	300	3000	300	350	400	350

Table 7 presents the list of nodes where storm tanks should be installed and their corresponding base areas for the zero-flooding solution of model SSR 2.

Table 7. New storm tank areas according to the zero-flooding solution of model SSR 2.

Nodes	N02	N12	N18	N25	N32	N34	N36	N44	N45	N50	N51	N54	N62
A(m ²)	1400	1450	450	1850	1250	150	1100	800	800	1450	650	100	250

The analysis obtained results for the zero-flooding solution of model SSR 2 multi-objective optimization. The following observation was made. From the 16 pipes to replace, 13 pipes have an increase of diameters, while pipes P12, P55, and P80 diameters are smaller than the original ones. In these parts of the network, it is reasonable to install a dissipation element (an orifice or a gate) to introduce a head loss equivalent to the one that involves the installation of the new smaller diameter. This result shows the necessity to include the hydraulic control in the drainage networks rehabilitation process.

To close this study, a final investigation was made to see the effect of the number of generations on the result provided by the model SSR 2. Figure 9 shows Pareto fronts of the SSR model 2 (29T39C)

for seven different maximum numbers of generations with a population of 200 individuals. It can clearly be observed that the 7 Pareto fronts overlap themselves with each other. This means that, with a low number of generations, the reduced model can provide good results, which reduces the computation time.

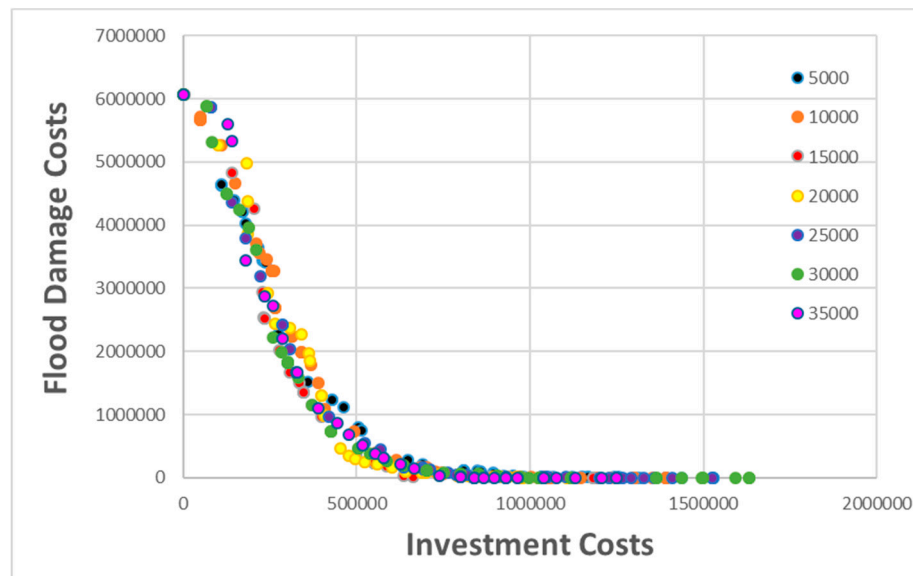


Figure 9. Pareto front representation of model SSR 2 (29T39C) and seven different numbers of generations.

6. Discussion

The application of the methodology to a real network permitted us to achieve the following results.

- The application of the search space reduction part of the methodology to the network called Ayurá allowed us to obtain two SSR models. SSR model 1 (29T47C) and SSR model 2 (29T39C).
- The application of the single-objective optimization given for the precedent SSR models better results than the application of the single-objective optimization to the complete model (73T86C). For these SSR models 1 and 2, the computation time is considerably reduced when compared to the complete model.
- The application of the second part of the methodology shows that Pareto fronts of SSR models 1 and 2 are better than the Pareto front of the complete model. This result is in accordance with the one provided by the single-objective optimization presented as a validation test of the SSR methodology.
- Computation time required to simulate a complete model is divided into two for SSR model 2, which passes from 14 days to 7 days. The number of generations for the two models is, respectively, 30,000 generations and 15,000 generations representing exactly the double. For the model SSR 2, 15,000 generations rather than 30,000 are used in this case because 10,000 generations objective function values do not improve.
- Representation of the SSR problem for different numbers of generations shows that it is not necessary for the use of an elevated number of generations to achieve good results.

Some results show that some conduits were substituted by smaller diameters. This shows the necessity to include hydraulic control in the rehabilitation process.

The efficiency of the methodology has been tested and it appears that, for scenarios considering search space reduction, a small population size can provide good results as a medium or large population size.

7. Conclusions

Extreme rainfall events and urbanization cause flooding problems to some originally well-designed drainage networks. One approach considers that these networks should be adapted to the new environmental and climatic conditions. Therefore, many strategies of adaptation have been planned and applied to solve the problem. Unfortunately, some of these strategies with time become ineffective due to climate change. Gong et al. [22] and Mora et al. [23] arrived at the conclusion that the green roof is inefficient for extreme rainfall events. It is important to always look for new and better strategies. Rehabilitation of drainage networks using pipes replacement and storm tank installations appears to be a better alternative to implement in order to effectively reduce or mitigate flooding. The problem encountered in this case is that the necessary time to implement such a solution is too elevated. In this work, an optimal rehabilitation methodology is presented. The methodology is composed by a search space reduction part, which reduces the problem size and a multi-objective part. This solves the search space reduction model based on the different defined objectives. The methodology implements key options to achieve the search space reduction. Reduction of search space reduces the number of local minima and calculation time. Reduction of search space achieves better results in both single-objective and multi-objective optimization.

The proposed methodology applied to the Ayurá network can be extended to any type of drainage network, since the methodology has been presented in a general form so that it can be easily extrapolated to other networks.

Drainage networks with pumping stations can be sources of uncertainties, but the presented methodology would be applicable. If the pumping station already exists in the network, the new decision variables can be the start and stop levels of the pump and the size of the suction tank. If the pumping station has to be installed in the drainage network, the flows to be evacuated by each pump would be defined as decision variables. The pumping investment costs should then be added in the objective function.

Search space reduction is an easy task to implement but, depending on the network size and the computer capacity, this operation may need more time. However, it is necessary to reduce the search space because it increases the exploration capacity of the optimization algorithm. The optimization of a search space reduction model provides better results (Figure 7) than the complete model and the computation time is considerably reduced.

The application of the proposed methodology to Ayurá, which is a mesh drainage network, shows the effectiveness and the robustness of the proposed methodology.

Address the rehabilitation in monetary units permits the assessment of the flood damages and selects the corresponding investments to mitigate them. Pareto fronts provided a set of optimal solutions that can help drainage managers to select the ones corresponding to their budget, the risk assessment, or the network design criteria.

In a context where time optimization is a new challenge in water resources management, this study shows that problem size reduction or search space reduction is important to save time and investments in the presence of an optimization problem. The SSR problem gives the smallest investments costs that reduce flood damage costs because the reduction of problem size allows a better exploration of the solution space for the optimization algorithm.

Results obtained for the zero-flooding solution of model SSR 2 show that it will be interesting to include some hydraulic dissipation elements such as orifices or gates during the rehabilitation process to operate the hydraulic control.

Author Contributions: All authors contributed extensively to the work presented in this paper. U.A.N.-N., P.L.I.-R., and F.J.M.-S. contributed to the research, the modeling, the data analysis, the writing, and the revision of the paper.

Funding: This research received no external funding.

Conflicts of Interest: The authors declare no conflict of interest.

References

- Jeong, H.; Ha, S.; Kim, H. Flood Protection Cost Allocation Using Cooperative Game Theory for Adapting Infrastructure to Climate Change. *J. Water Resour. Plan. Manag.* **2018**, *144*, 04018010. [[CrossRef](#)]
- Quinn, A.D.; Ferranti, E.J.S.; Hodgkinson, S.P.; Jack, A.C.R.; Beckford, J.; Dora, J.M. Adaptation Becoming Business as Usual: A Framework for Climate-Change-Ready Transport. *Infrastructures* **2018**, *3*, 10. [[CrossRef](#)]
- Szewrański, S.; Chrusciński, J.; Kazak, J.; Świader, M.; Tokarczyk-Dorociak, K.; Zmuda, R. Pluvial Flood Risk Assessment Tool (PFRA) for rainwater management and adaptation to climate change in newly urbanised areas. *Water* **2018**, *10*, 386. [[CrossRef](#)]
- Silva, M.M.; Costa, J.P. Urban floods and climate change adaptation: The potential of public space design when accommodating natural processes. *Water* **2018**, *10*, 180. [[CrossRef](#)]
- Zhang, D.; Martinez, N.; Lindholm, G.; Ratnaweera, H. Manage Sewer In-Line Storage Control Using Hydraulic Model and Recurrent Neural Network. *Water Resour. Manag.* **2018**, *32*, 2079–2098. [[CrossRef](#)]
- Prasad, V.; Kandasamy, V.; Sinha, S.K.; Asce, M. Stormwater Pipe Performance Index Using Fuzzy Inference Method. *J. Water Resour. Plan. Manag.* **2018**, *144*, 04018062. [[CrossRef](#)]
- Song, Y.H.; Yun, R.; Lee, E.H.; Lee, J.H. Predicting sedimentation in urban sewer conduits. *Water* **2018**, *10*, 462. [[CrossRef](#)]
- Scionti, F.; Miguez, M.G.; Barbaro, G.; De Sousa, M.M.; Foti, G.; Canale, C. Integrated Methodology for Urban Flood Risk Mitigation in Cittanova, Italy. *J. Water Resour. Plan. Manag.* **2018**, *144*, 05018013. [[CrossRef](#)]
- Kroll, S.; Weemaes, M.; Impe, J.; Van Willems, P. A Methodology for the Design of RTC Strategies for Combined Sewer Networks. *Water* **2018**, *10*, 1675. [[CrossRef](#)]
- Vermuyten, E.; Meert, P.; Wolfs, V.; Willems, P. Combining Model Predictive Control with a Reduced Genetic Algorithm for Real-Time Flood Control. *J. Water Resour. Plan. Manag.* **2018**, *144*, 04017083. [[CrossRef](#)]
- Salinas-Rodriguez, C.; Gersonius, B.; Zevenbergen, C.; Serrano, D.; Ashley, R. A semi risk-based approach for managing urban drainage systems under extreme rainfall. *Water* **2018**, *10*, 384. [[CrossRef](#)]
- Caldas, A.M.; Pissarra TC, T.; Costa RC, A.; Neto FC, R.; Zanata, M.; da Parahyba, R.B.V.; Pacheco, F.A.L. Flood vulnerability, environmental land use conflicts, and conservation of soil and water: A study in the Batatais SP municipality, Brazil. *Water* **2018**, *10*, 1357. [[CrossRef](#)]
- Alves, A.; Gersonius, B.; Sanchez, A.; Vojinovic, Z.; Kapelan, Z. Multi-criteria Approach for Selection of Green and Grey Infrastructure to Reduce Flood Risk and Increase CO-benefits. *Water Resour. Manag.* **2018**, *32*, 2505–2522. [[CrossRef](#)]
- Kolen, B.; van Gelder, P.H.A.J.M. Risk-based decision-making for evacuation in case of imminent threat of flooding. *Water* **2018**, *10*, 1429. [[CrossRef](#)]
- Song, J.Y.; Chung, E.S.; Kim, S.H. Decision support system for the design and planning of low-impact development practices: The case of Seoul. *Water* **2018**, *10*, 146. [[CrossRef](#)]
- De Paola, F.; Giugni, M.; Pugliese, F.; Romano, P. Optimal Design of LIDs in Urban Stormwater Systems Using a Harmony-Search Decision Support System. *Water Resour. Manag.* **2018**, *32*, 4933–4951. [[CrossRef](#)]
- Xiao, Q.; McPherson, E.; Zhang, Q.; Ge, X.; Dahlgren, R. Performance of Two Bioswales on Urban Runoff Management. *Infrastructures* **2017**, *2*, 12. [[CrossRef](#)]
- Martínez, C.; Sanchez, A.; Galindo, R.; Mulugeta, A.; Vojinovic, Z.; Galvis, A. Configuring Green Infrastructure for Urban Runoff and Pollutant Reduction Using an Optimal Number of Units. *Water* **2018**, *10*, 1528. [[CrossRef](#)]
- Hu, M.; Zhang, X.; Siu, Y.L.; Li, Y.; Tanaka, K.; Yang, H.; Xu, Y. Flood mitigation by permeable pavements in Chinese sponge city construction. *Water* **2018**, *10*, 172. [[CrossRef](#)]
- Leimgruber, J.; Krebs, G.; Camhy, D.; Muschalla, D. Sensitivity of Model-Based Water Balance to Low Impact Development Parameters. *Water* **2018**, *10*, 1838. [[CrossRef](#)]
- Gong, Y.; Yin, D.; Fang, X.; Li, J. Factors affecting runoff retention performance of extensive green roofs. *Water* **2018**, *10*, 1217. [[CrossRef](#)]
- Mora-Melià, D.; López-Aburto, C.S.; Ballesteros-Pérez, P.; Muñoz-Velasco, P. Viability of green roofs as a flood mitigation element in the central region of Chile. *Sustainability* **2018**, *10*, 1130. [[CrossRef](#)]
- Vojinovic, Z.; Sahlu, S.; Torres, A.S.; Seyoum, S.D.; Anvarifar, F.; Matungulu, H.; Kapelan, Z. Multi-objective rehabilitation of urban drainage systems under uncertainties. *J. Hydroinform.* **2014**, *16*, 1044–1061. [[CrossRef](#)]
- Lim, S.; Ho, V.H.; Lee, S.Y.; Yoo, D.G.; Kim, J.H. Determination of optimal location and capacity of detention facilities. *Procedia Eng.* **2014**, *70*, 1037–1045. [[CrossRef](#)]

25. Xu, K.; Bin, L.; Lian, J.; Liu, R. Staged optimization design for updating urban drainage systems in a City of China. *Water* **2018**, *10*, 66. [\[CrossRef\]](#)
26. Yazdi, J. Rehabilitation of Urban Drainage Systems Using a Resilience-Based Approach. *Water Resour. Manag.* **2018**, *32*, 721–734. [\[CrossRef\]](#)
27. Martínez, C.; Sanchez, A.; Toloh, B.; Vojinovic, Z. Multi-objective Evaluation of Urban Drainage Networks Using a 1D/2D Flood Inundation Model. *Water Resour. Manag.* **2018**, *32*, 4329–4343. [\[CrossRef\]](#)
28. Ngamalieu-Nengoue, U.A.; Iglesias-Rey, P.L.; Martínez-Solano, F.J.; Mora-Meliá, D.; Saldarriaga Valderrama, J.G. Urban Drainage Network Rehabilitation Considering Storm Tank Installation and Pipe Substitution. *Water* **2019**, *11*, 515. [\[CrossRef\]](#)
29. Deb, K.; Pratap, A.; Agarwal, S.; Meyarivan, T. A fast and elitist multiobjective genetic algorithm: NSGA-II. *IEEE Trans. Evol. Comput.* **2002**, *6*, 182–197. [\[CrossRef\]](#)
30. Ngamalieu-Nengoue, U.A.; Iglesias-Rey, P.L.; Martínez-Solano, F.J.; Mora-Meliá, D. Multi-Objective Optimization for Urban Drainage or Sewer Networks Rehabilitation through Pipes Substitution and Storage Tanks Installation. *Water* **2019**, *11*, 935. [\[CrossRef\]](#)
31. Maier, H.R.; Kapelan, Z.; Kasprzyk, J.; Kollat, J.; Matott, L.S.; Cunha, M.C.; Ostfeld, A. Evolutionary algorithms and other metaheuristics in water resources: Current status, research challenges and future directions. *Environ. Model. Softw.* **2014**, *62*, 271–299. [\[CrossRef\]](#)
32. Sophocleous, S.; Savić, D.; Kapelan, Z. Leak Localization in a Real Water Distribution Network Based on Search-Space Reduction. *J. Water Resour. Plan. Manag.* **2019**, *145*, 04019024. [\[CrossRef\]](#)
33. Wang, K.H.; Altunkaynak, A. Comparative case study of rainfall-runoff modeling between SWMM and fuzzy logic approach. *J. Hydro-Eng.* **2011**, *17*, 283–291. [\[CrossRef\]](#)
34. Rosa, D.J.; Clausen, J.C.; Dietz, M.E. Calibration and verification of SWMM for low impact development. *J. Am. Water Resour. Assoc.* **2015**, *51*, 746–757. [\[CrossRef\]](#)
35. Granata, F.; Gargano, R.; de Marinis, G. Support vector regression for rainfall-runoff modeling in urban drainage: A comparison with the EPA's storm water management model. *Water* **2016**, *8*, 69. [\[CrossRef\]](#)
36. Rossman, L.A. *Storm Water Management Model User's Manual*; U.S. Environmental Protection Agency: Cincinnati, OH, USA, 2015.
37. Cunha, M.C.; Zeferino, J.A.; Simões, N.E.; Saldarriaga, J.G. Optimal location and sizing of storage units in a drainage system. *Environ. Model. Softw.* **2016**, *83*, 155–166. [\[CrossRef\]](#)
38. Mora-Meliá, D.; Iglesias-Rey, P.L.; Martínez-Solano, F.J.; Ballesteros-Pérez, P. Efficiency of Evolutionary Algorithms in Water Network Pipe Sizing. *Water Resour. Manag.* **2015**, *29*, 4817–4831. [\[CrossRef\]](#)
39. Wang, Q.; Zhou, Q.; Lei, X.; Savić, D. Comparison of Multiobjective Optimization Methods Applied to Urban Drainage Adaptation Problems. *J. Water Resour. Plan. Manag.* **2018**, *144*, 04018070. [\[CrossRef\]](#)
40. Lee, E.H.; Kim, J.H. Development of resilience index based on flooding damage in urban areas. *Water* **2017**, *9*, 428. [\[CrossRef\]](#)

