

Figure S1. Typical triangular-shaped bite mark of *L. scleratus* on some commercial catches, recorded during small-scale fishing trips conducted in seas around Crete during the period May 2020–December 2022: A) Mediterranean parrotfish, *Sparisoma cretense*. B) Striped red mullet, *Mullus surmuletus*. C) Common stingray, *Dasyatis pastinaca*. D) Salema, *Sarpa salpa*. E) Common dolphinfish, *Coryphaena hippurus*.

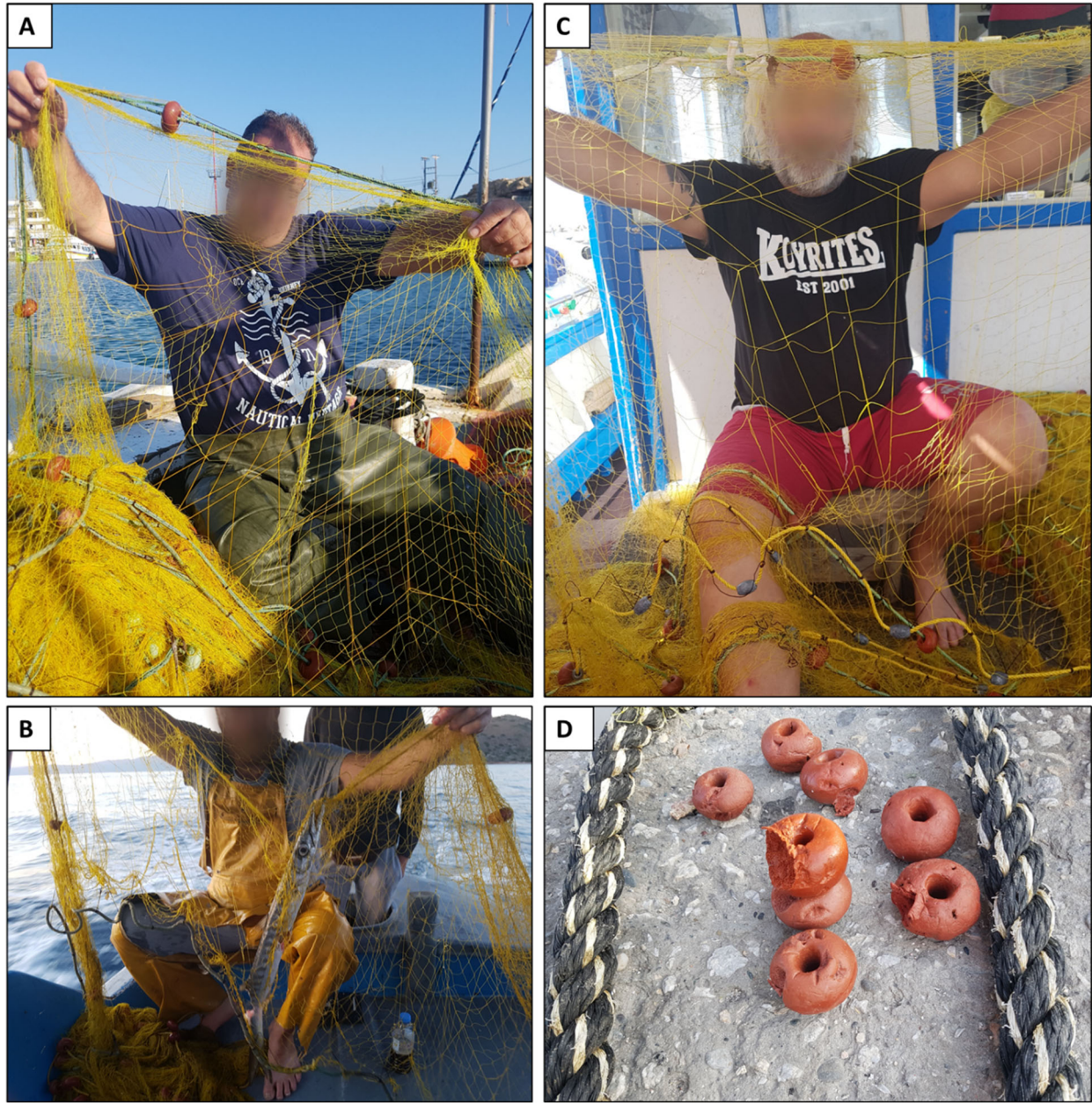


Figure S2. Damages of *L. scleratus* in small-scale fishing trips conducted in seas around Crete during the period May 2020–December 2022: A) Cluster of holes in trammel net. B) Cluster of holes in trammel net, around a depredated European barracuda *Sphyraena sphyraena*, with obvious triangular-shaped bite marks. C) Single big hole in trammel net with the outer net layers being intact. D) Damages on sturdy gear parts (net floaters).

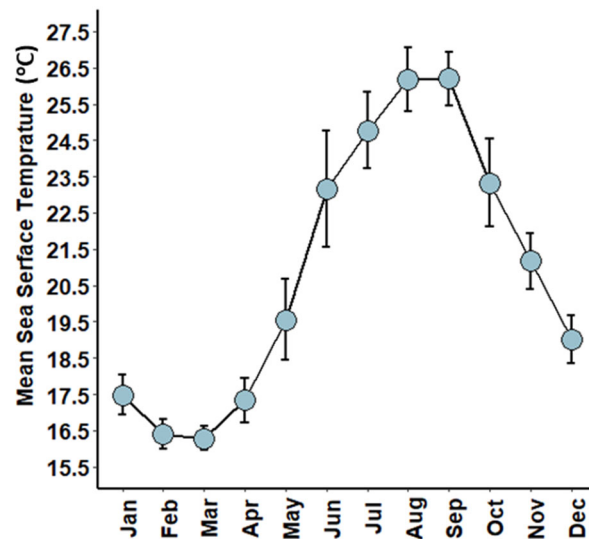


Figure S3. Mean sea surface temperature per month in coastal waters of Crete. Error bars represent standard errors. Temperature data were acquired on a year-round basis through deployments of a temperature logger (HOBO Pendant Temperature/Light 64K Data Logger UA-002-64).

Table S1. Annual economic losses (mean \pm S.D.) inflicted by *L. sceleratus* on small-scale fisheries operating in various Mediterranean regions per loss category, vessel and gear.

Region	Gear	Economic Losses			Reference
		Gear Loss	Labor Loss	Catch Loss	
Southeast Aegean Sea and Levantine Sea	Longline	TL 942.4 \pm 1007.7	TL 67.9 \pm 215.5	NE	[39]
	Net	TL 1346.9 \pm 1451.0	NE	NE	
	Longline and Net	TL 1440.6 \pm 900.7	NE	NE	
Southeast Aegean Sea and Levantine Sea	Longline	TL 2336.1 \pm 2087.9	TL 64.7 \pm 90.1	NE	[40]
	Net	TL 2820.6 \pm 3393.4	NE	NE	
	Longline and Net	TL 2559.6 \pm 2781.0	NE	NE	
Southeast Aegean Sea and Levantine Sea	Longline	TL 2929.4 \pm 2023.0	NE	TL 2460.0 \pm 1742.3	[18] ¹
	Net	TL 3352.9 \pm 4311.8	NE	TL 3410.0 \pm 4431.1	
	Longline and Net	TL 3070.6 \pm 2949.4	NE	TL 2776.7 \pm 2907.5	
Libyan Sea	Longline	EUR 650.0 \pm 919.2	EUR 1960.0 \pm 2771.9	EUR 720.0 \pm 1018.2	Present study
	Net	EUR 1364.3 \pm 551.9	EUR 1662.2 \pm 2652.5	EUR 2262.9 \pm 762.7	
	Longline and Net	EUR 2494.8 \pm 1304.6	EUR 5348.4 \pm 3371.9	EUR 2648.5 \pm 828.5	
Cretan Sea	Longline	EUR 628.3 \pm 491.5	EUR 1255.0 \pm 2362.9	EUR 444.0 \pm 282.2	Present study
	Net	EUR 1550.0 \pm 1324.9	EUR 1905.9 \pm 2571.1	EUR 1360.4 \pm 1449.4	
	Longline and Net	EUR 1459.3 \pm 979.6	EUR 1904.1 \pm 2388.7	EUR 1755.5 \pm 1519.2	
Ionian Sea	Longline	EUR 40.0 \pm 54.8	EUR 672.0 \pm 920.2	-	Present study
	Net	EUR 7.9 \pm 48.7	-	-	
	Longline and Net	EUR 363.6 \pm 1206.0	EUR 553.6 \pm 1374.7	-	

TL, Turkish lira (TL 1 \sim EUR 0.34, 2011-2012; TL 1 \sim EUR 0.37, 2013-2014; TL 1 \sim EUR 0.09, 2020-2022).

NE=not estimated.

¹Losses inflicted by various pufferfish species.

Table S2. Annual gear and catch economic losses inflicted by marine mammals and *L. sceleratus* on small-scale fisheries operating in various Greek regions. NA = not available.

Region	Gear	Species involved	Range	Mean \pm standard deviation	Sampling method (sample size)	Reference
North Aegean Sea (Thermaikos Gulf)	Gillnets	<i>Tursiops truncatus</i>	NA	EUR >5000	Interviews (60) + On boards (74)	[52]
Ionian Sea (Ambracia Gulf)	Gillnets + Trammel nets	<i>Tursiops truncatus</i>	EUR 500-5000	NA	Interviews (50)	[50]
Ionian Sea (Inner Ionian Archipelago)	Gillnets + Trammel nets	<i>Tursiops truncatus</i>	EUR 500-20000	NA	Interviews (50)	[50]
Central Greece (North Corinth Gulf)	Bottom set nets	<i>Tursiops truncatus</i>	EUR 0-10000	EUR 1398 \pm 1950	Interviews (NA)	[51]
Central Greece (South Corinth Gulf)	Bottom set nets	<i>Tursiops truncatus</i>	EUR 0-1000	EUR 81 \pm 254	Interviews (NA)	[51]
Southeast Aegean Sea (Lipsi Island)	Gillnets + Trammel nets	<i>Monachus monachus</i>	NA	EUR 2230	Port sampling (371)	[53]
Ionian Sea	Gillnets + Trammel nets + Longlines	<i>Lagocephalus sceleratus</i>	EUR 0-4000	EUR 83 \pm 545	Interviews (54)	Present study
Cretan Sea	Gillnets + Trammel nets + Longlines	<i>Lagocephalus sceleratus</i>	EUR 0-9760	EUR 2870 \pm 2184	Interviews (54)	Present study
Libyan Sea	Gillnets + Trammel nets + Longlines	<i>Lagocephalus sceleratus</i>	EUR 0-8840	EUR 4593 \pm 2013	Interviews (33)	Present study

References

18. Öndes, F.; Ünal, V.; Özbilgin, Y.; Deval, C.; Turan, C. By-catch and monetary loss of pufferfish in Turkey, the Eastern Mediterranean. *Ege J. Fish. Aquat. Sci.* **2018**, *35*, 361–372. <https://doi.org/10.12714/egejfas.2018.35.4.01>.
39. Ünal, V.; Göncüoğlu, H.; Durgun, D.; Tosunoğlu, Z.; Deval, C.; Turan, C. Silver-cheeked toadfish, *Lagocephalus sceleratus* (Actinopterygii: Tetraodontiformes: Tetraodontidae), causes a substantial economic losses in the Turkish Mediterranean coast: A call for decision makers. *Acta Ichthyol. Pisc.* **2015**, *45*, 231–237. <https://doi.org/10.3750/AIP2015.45.3.02>.
40. Ünal, V.; Bodur, H.G. The socio-economic impacts of the silver-cheeked toadfish on small-scale fishers: A comparative study from the Turkish coast. *J. Fish. Aquat. Sci.* **2017**, *34*, 119–127.
50. Gonzalvo, J.; Giovos, I.; Moutopoulos, D.K. Fishermen's perception on the sustainability of small-scale fisheries and dolphin–fisheries interactions in two increasingly fragile coastal ecosystems in western Greece. *Aquat. Conserv. Mar. Freshw. Ecosyst.* **2015**, *25*, 91–106. <https://doi.org/10.1002/aqc.2444>.
51. Bonizzoni, S.; Bearzi, G.; Santostasi, N.L.; Furey, N.B.; Valavanis, V.D.; Würsig, B. Dolphin depredation of bottom-set fishing nets in the Gulf of Corinth, Mediterranean Sea. In Proceedings of the 30th Annual Conference of the European Cetacean Society, Madeira, Portugal, 14–16 March 2016.
52. Garagouni, M.; Avgerinou, G.; Mouchlianitis, F.A.; Minos, G.; Ganas, K. Questionnaire and experimental surveys show that dolphins cause substantial losses to a gillnet fishery in the eastern Mediterranean Sea. *ICES J. Mar. Sci.* **2022**, *79*, 2552–2561. <https://doi.org/10.1093/icesjms/fsac196>.
53. Ríos, N.; Drakulic, M.; Paradinas, I.; Millioui, A.; Cox, R. Occurrence and impact of interactions between small-scale fisheries and predators, with focus on Mediterranean monk seals (*Monachus monachus* Hermann 1779), around Lipsi Island complex, Aegean Sea, Greece. *Fish. Res.* **2017**, *187*, 1–10. <https://doi.org/10.1016/j.fishres.2016.10.013>.