

Figure S1. Peak profile of compounds of interest (R_f 0.38) released from pure WA Manuka honey 1 honey using Franz cell and customised Franz-type cell set-up at (a) 15 min, (b) 30 min, (c) 1 h, (d) 3 h, (e) 6 h, (f) 12 h and (g) baseline (0 min). Red box highlights monitored band.

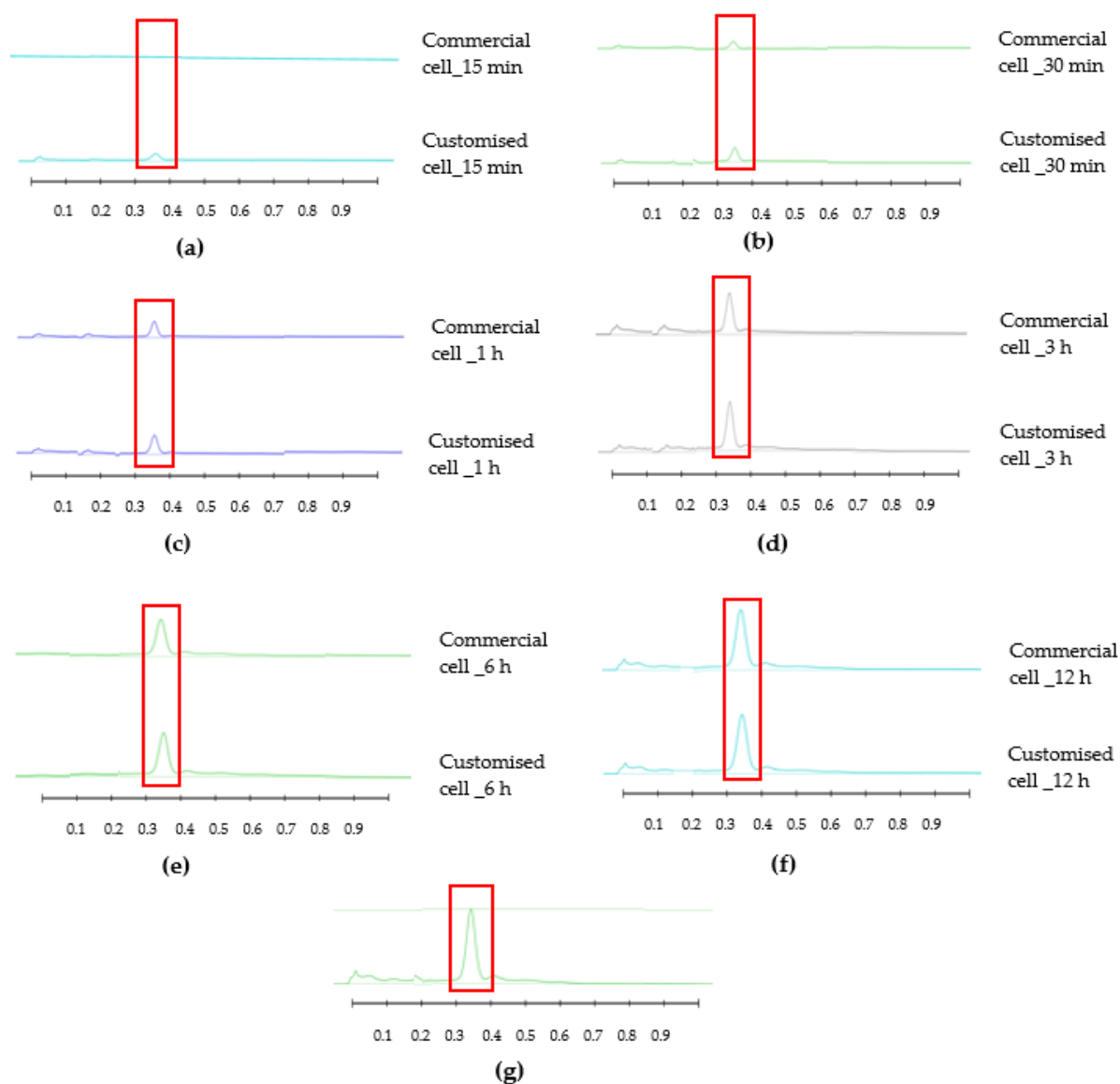


Figure S2. Peak profile of compounds of interest (R_f 0.38) released from WA Manuka honey 1 pre-gel solution using Franz cell and customised Franz-type cell set-up at (a) 15 min, (b) 30 min, (c) 1 h, (d) 3 h, (e) 6 h, (f) 12 h and (g) baseline (0 min). Red box highlights monitored band.

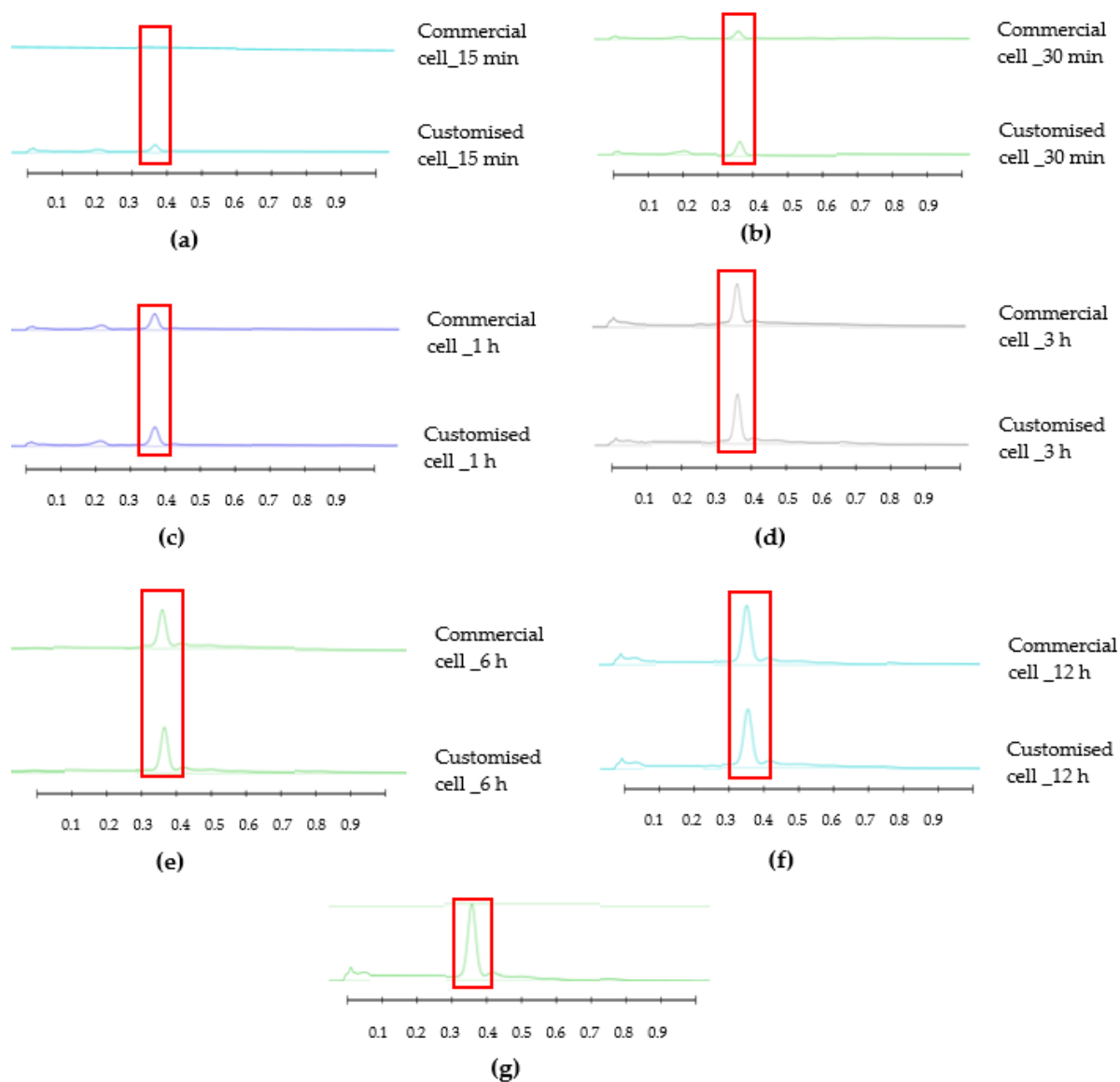


Figure S3. Peak profile of compounds of interest (R_f 0.38) released from pure WA Manuka honey 2 honey using Franz cell and customised Franz-type cell set-up at (a) 15 min, (b) 30 min, (c) 1 h, (d) 3 h, (e) 6 h, (f) 12 h and (g) baseline (0 min). Red box highlights monitored band.

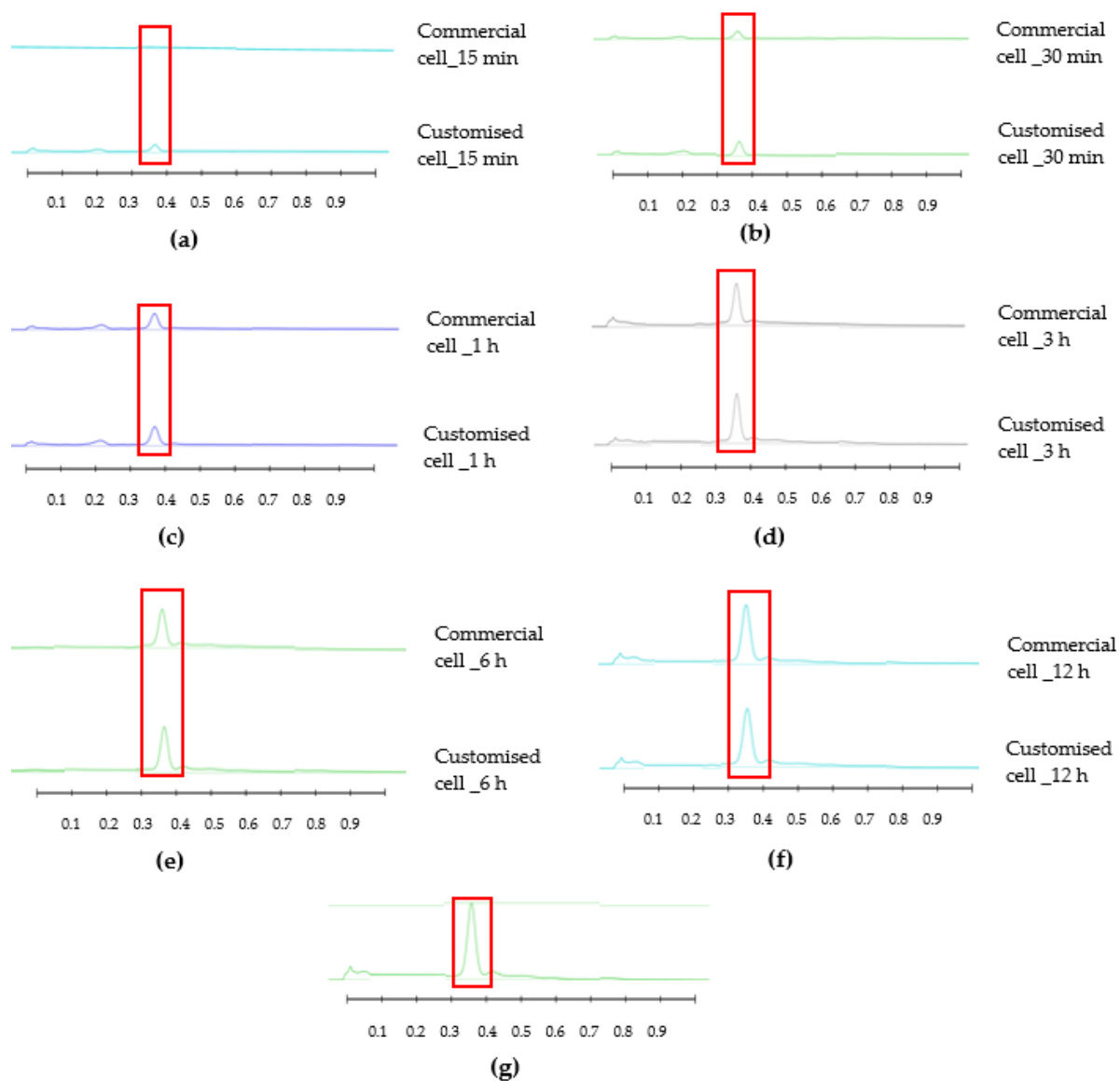


Figure S4. Peak profile of compounds of interest (R_f 0.38) released from WA Manuka honey 2 pre-gel solution using Franz cell and customised Franz-type cell set-up at (a) 15 min, (b) 30 min, (c) 1 h, (d) 3 h, (e) 6 h, (f) 12 h and (g) baseline (0 min). Red box highlights monitored band.

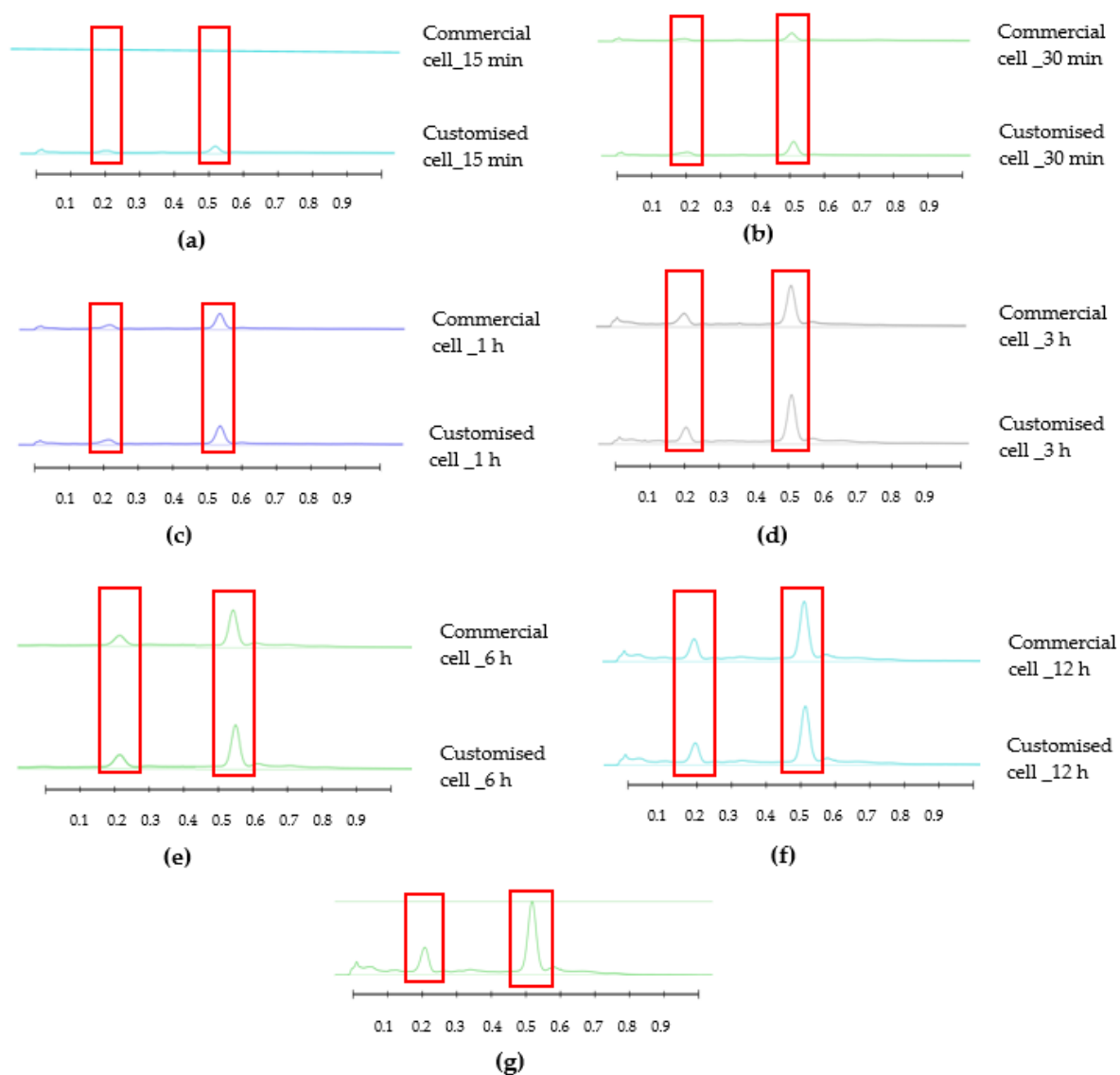


Figure S5. Peak profile of compounds of interest (R_f 0.20 and R_f 0.53) released from pure Coastal Peppermint honey using Franz cell and customised Franz-type cell set-up at (a) 15 min, (b) 30 min, (c) 1 h, (d) 3 h, (e) 6 h, (f) 12 h and (g) baseline (0 min). Red boxes highlight monitored bands.

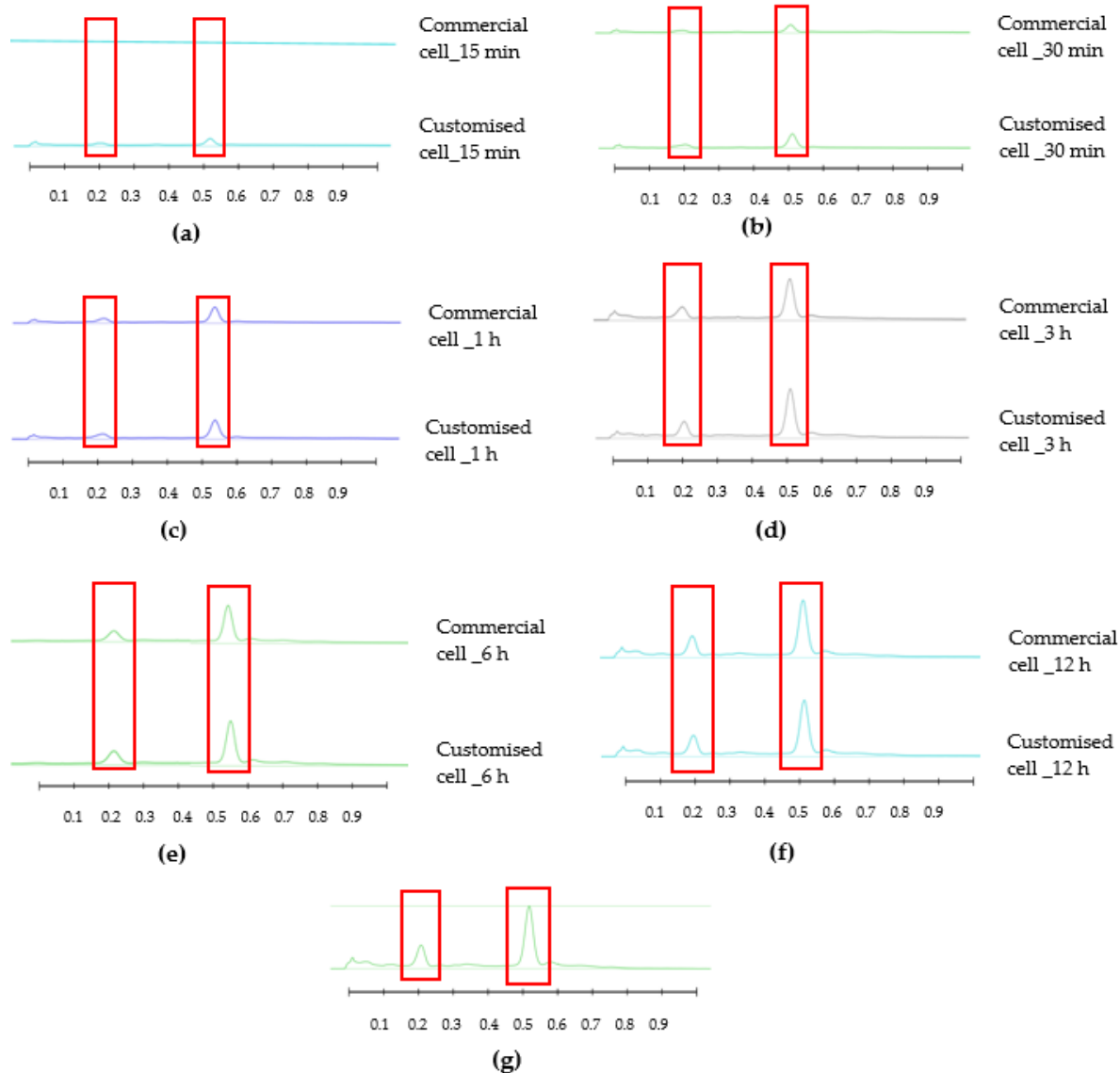


Figure S6. Peak profile of compounds of interest (R_f 0.20 and R_f 0.53) released from Coastal Peppermint honey pre-gel solution using Franz cell and customised Franz-type cell set-up at (a) 15 min, (b) 30 min, (c) 1 h, (d) 3 h, (e) 6 h, (f) 12 h and (g) baseline (0 min). Red boxes highlight monitored bands.

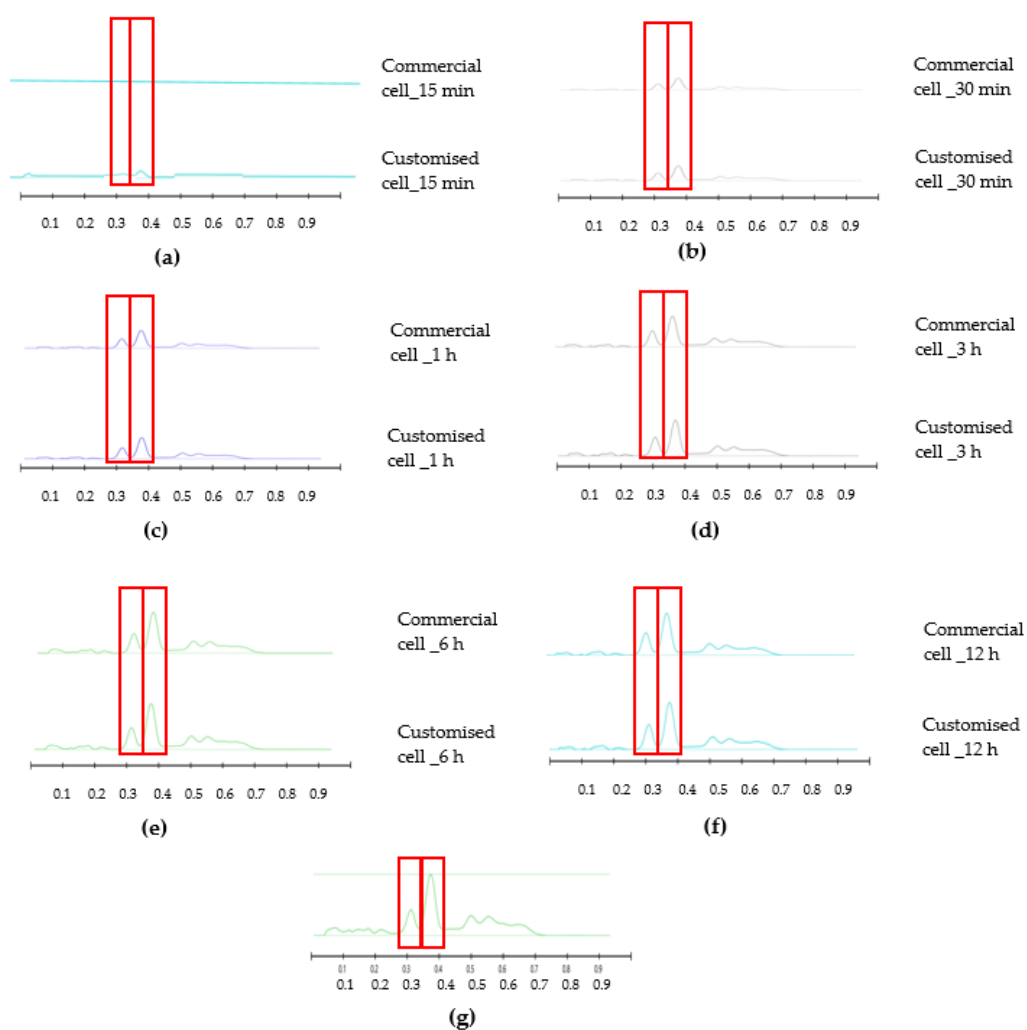


Figure S7. Peak profile of compounds of interest (R_f 0.32 and R_f 0.39) released from pure NZ Manuka honey using Franz cell and customised Franz-type cell set-up at (a) 15 min, (b) 30 min, (c) 1 h, (d) 3 h, (e) 6 h, (f) 12 h and (g) baseline (0 min). Red boxes highlight monitored bands.

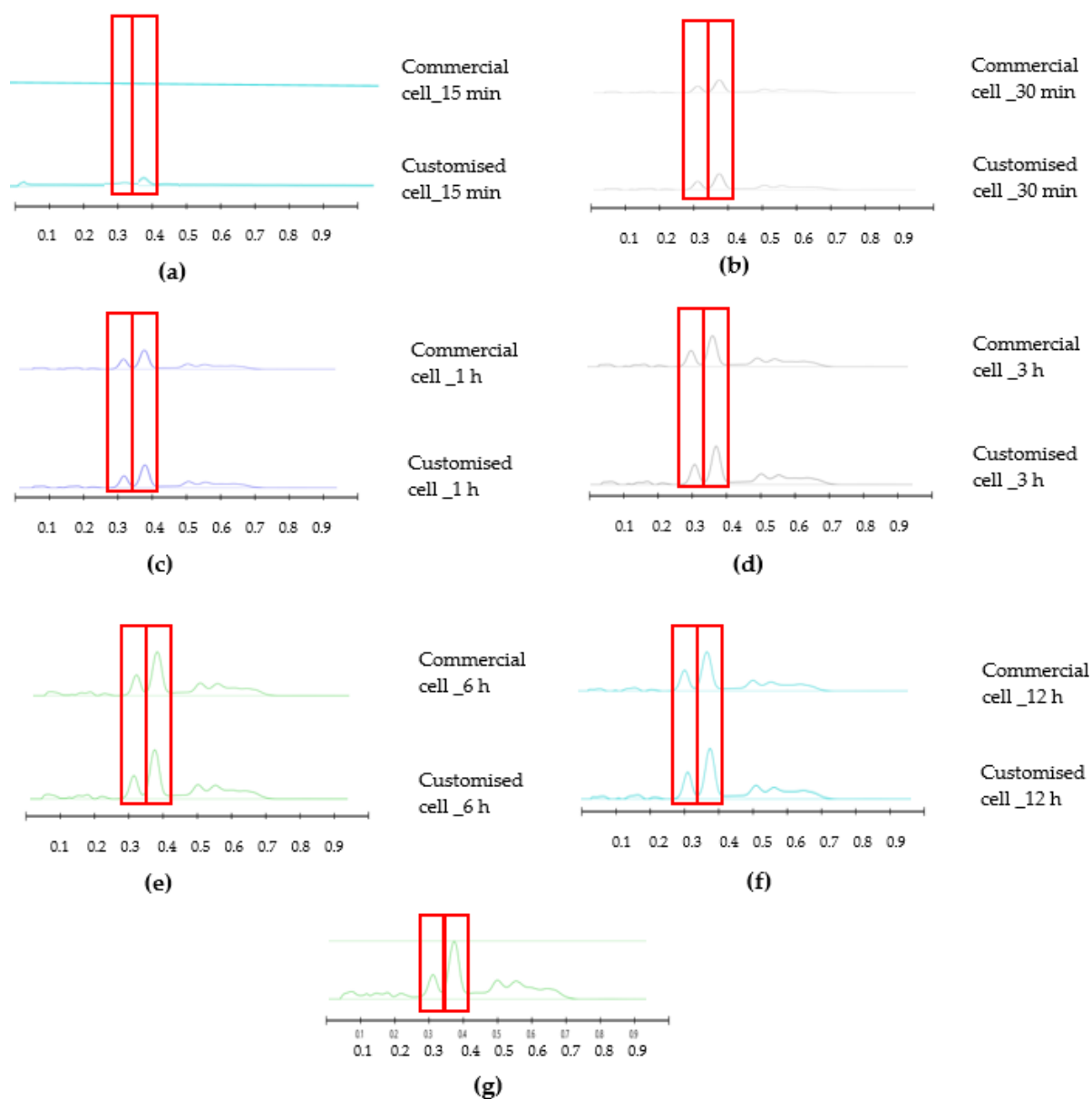


Figure S8. Peak profile of compounds of interest (R_f 0.32 and R_f 0.39) released from NZ Manuka honey pre-gel solution using Franz cell and customised Franz-type cell set-up at (a) 15 min, (b) 30 min, (c) 1 h, (d) 3 h, (e) 6 h, (f) 12 h and (g) baseline (0 min). Red boxes highlight monitored bands.