

New Glycosalen– Manganese(III) Complexes and RCA₁₂₀ Hybrid Systems as Superoxide Dismutase/Catalase Mimetics

¹ Istituto di Cristallografia, Consiglio Nazionale delle Ricerche, Via Gaifami 18, 95125 Catania, Italy; valeria.lanza@cnr.it

² Dipartimento di Scienze Chimiche, Università di Catania, Viale A. Doria 6, 95125 Catania, Italy

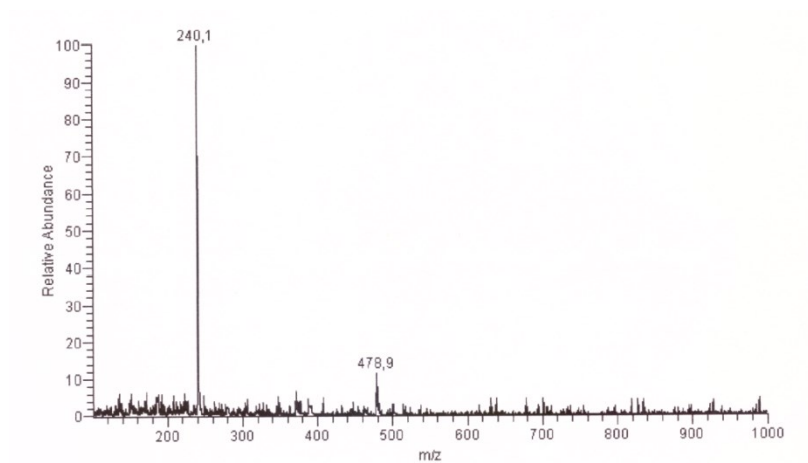


Figure S1. ESI-MS spectrum of **1a**

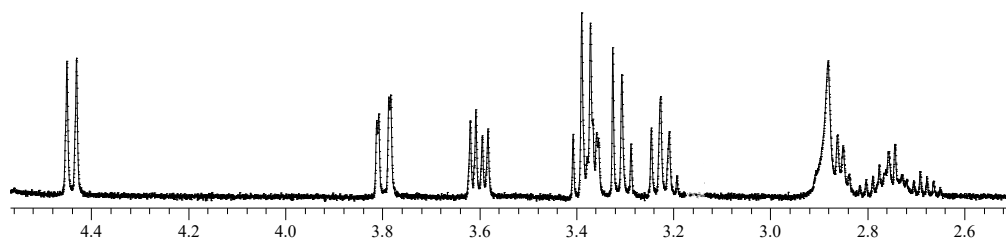


Figure S2. ¹H NMR spectrum of **1a** (D₂O, 500 MHz)

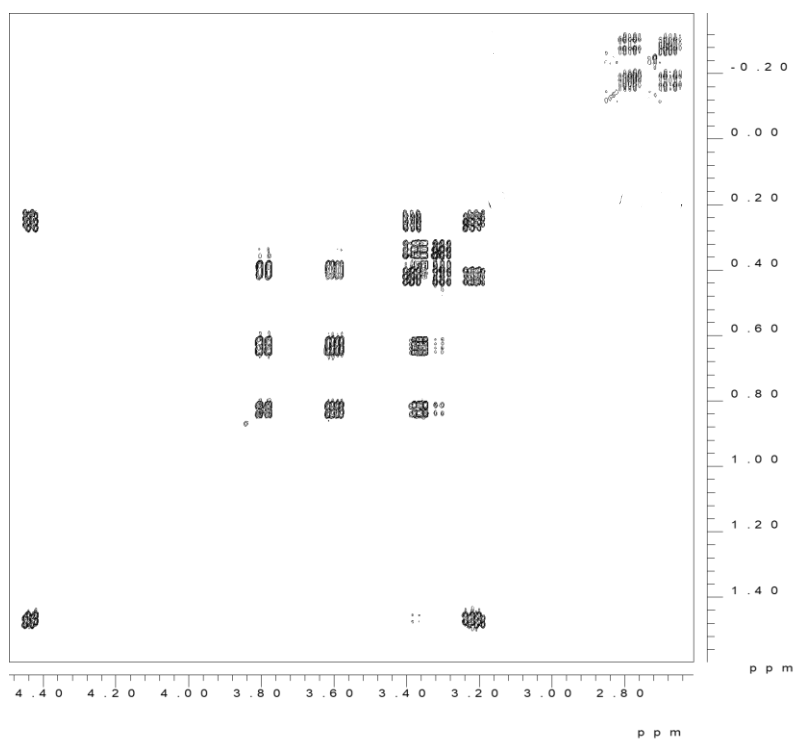


Figure S3. ^1H NMR COSY spectrum of **1a** (D_2O , 500 MHz)

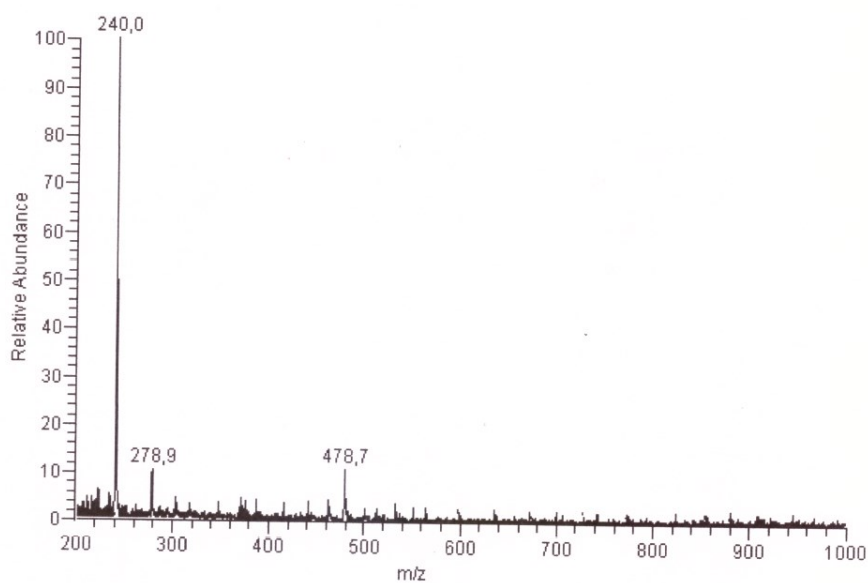


Figure S4. ESI-MS of **1b**

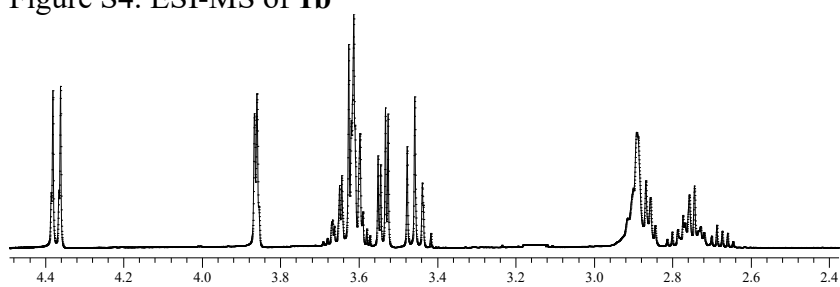


Figure S5. ^1H NMR spectrum of **1b** (D_2O , 500 MHz)

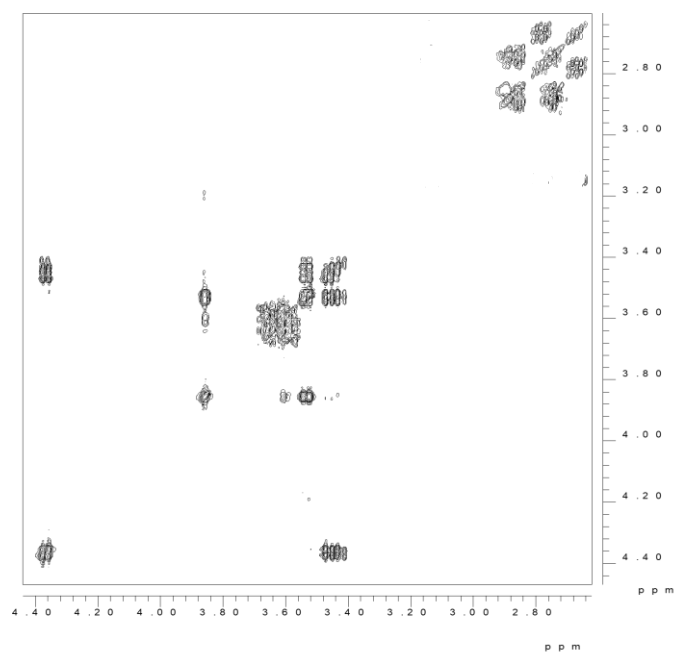


Figure S6. ^1H NMR COSY spectrum of **1b** (D_2O , 500 MHz)

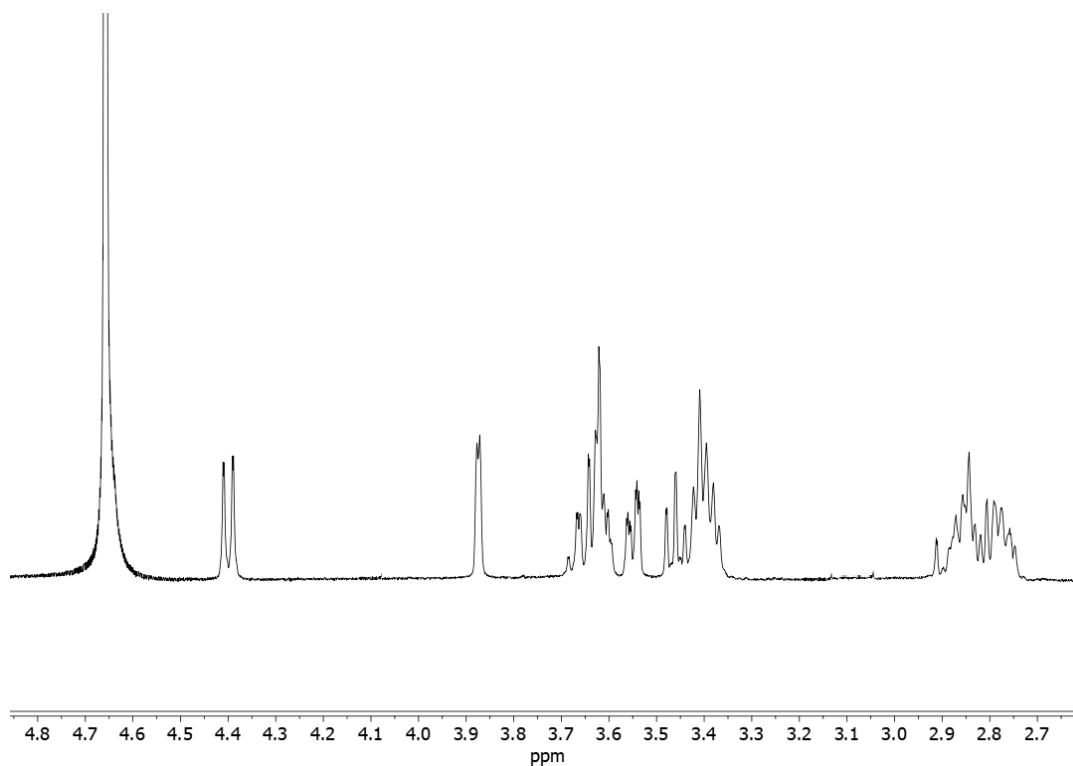
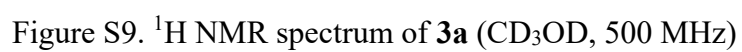


Figure S7. ^1H NMR spectrum of **2b** (D_2O , 500 MHz)



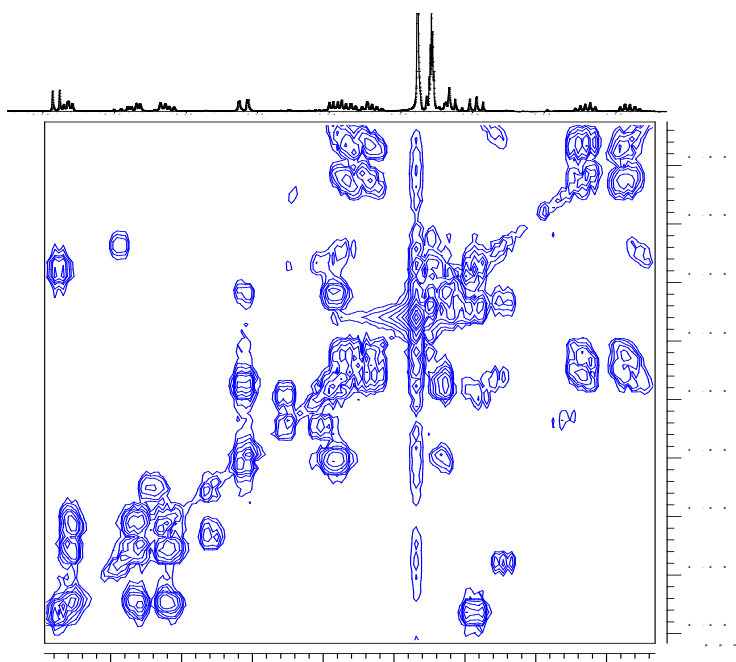


Figure S10. ^1H NMR COSY spectrum of **3a** (CD_3OD , 500 MHz)

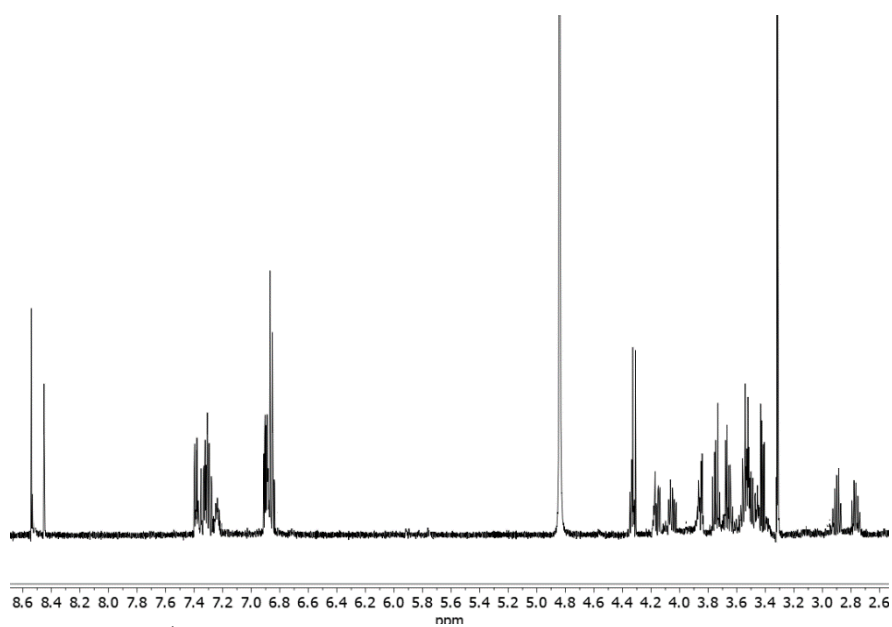


Figure S11. ^1H NMR spectrum of **3b** (CD_3OD , 500 MHz)

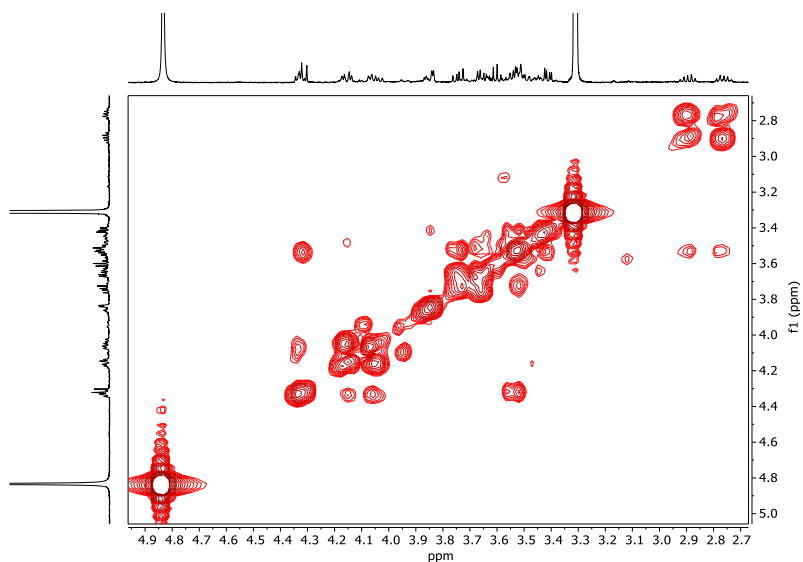


Figure S12. ^1H NMR COSY spectrum of **3b** (CD_3OD , 500 MHz)

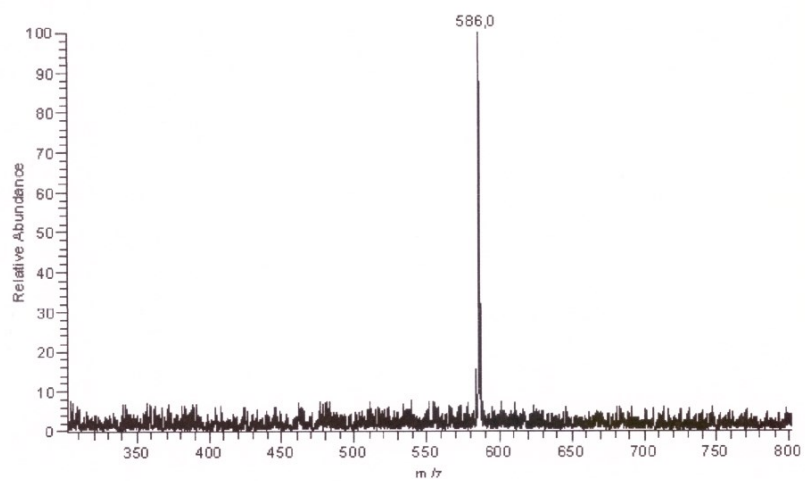


Figure S13. ESI-MS of **4b**

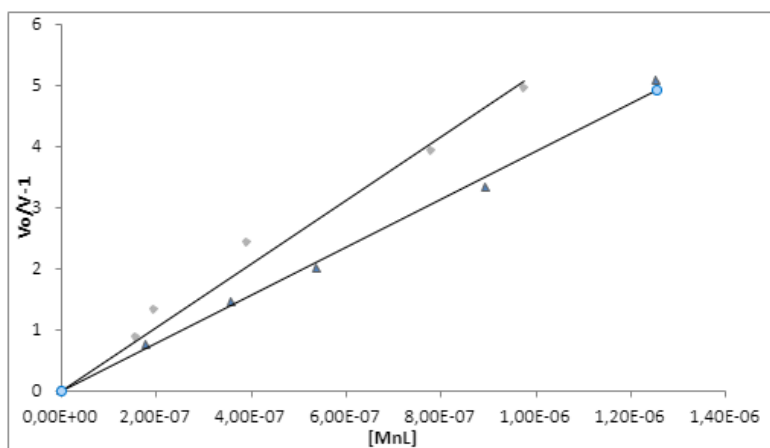


Figure S14. SOD like activity of **4a** (diamond) and **4b** (triangle) (Fridovich assay).

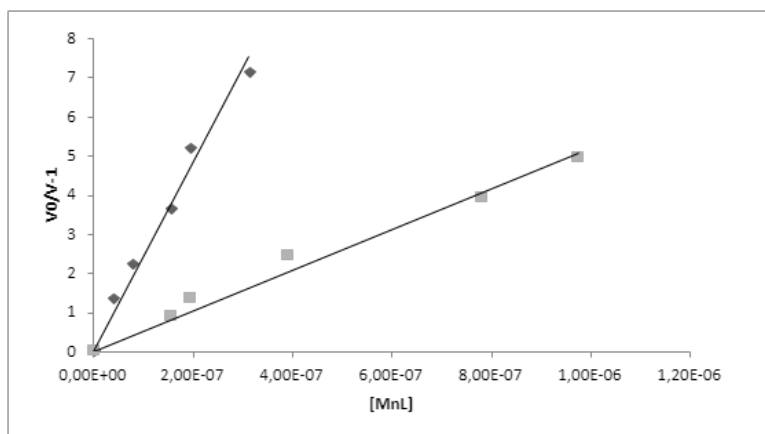


Figure S15. Comparison between SOD-like activity of **4a** alone (gray squares) and after incubation with RCA₁₂₀ (black squares).

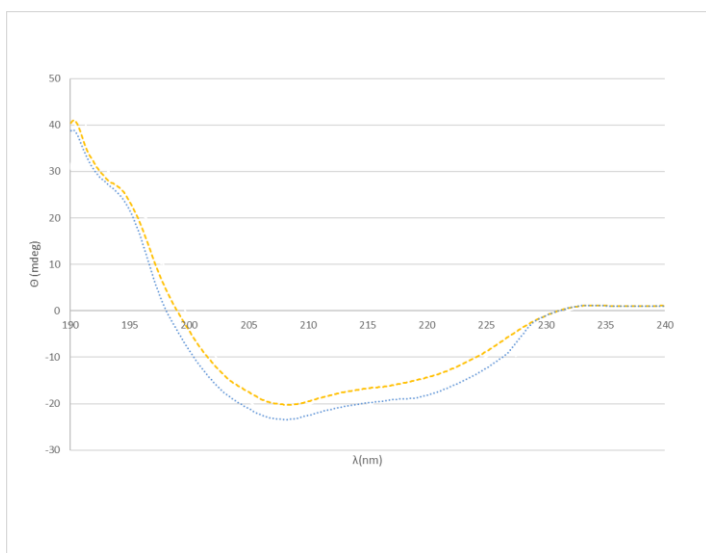


Figure S16. CD spectra of RCA₁₂₀ alone (1.6×10^{-4} M) (blue) and in the presence of **4a** (3.2×10^{-4} M) (yellow).

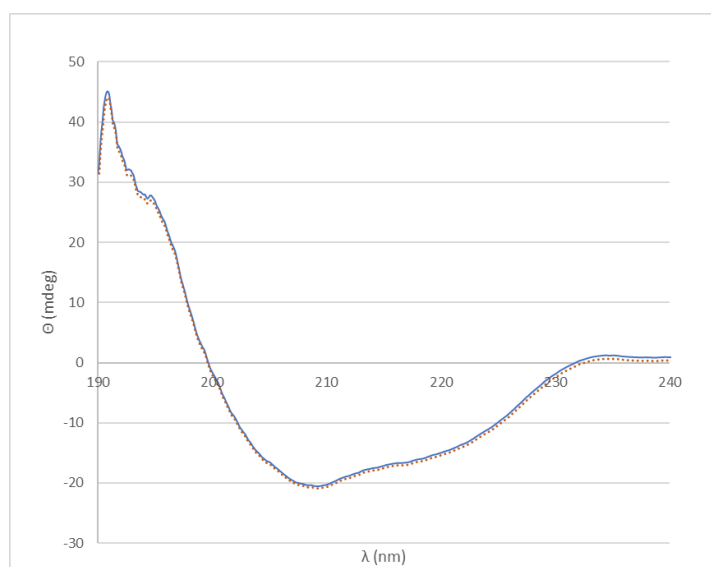


Figure S17. CD spectra of RCA₁₂₀ alone (1.6x10⁻⁴ M) (blue) and in the presence of **4b** (3.2x10⁻⁴ M) (red).