

Article

Bidirectional Underwater Drag Reduction on Bionic Flounder Two-Tier Structural Surfaces

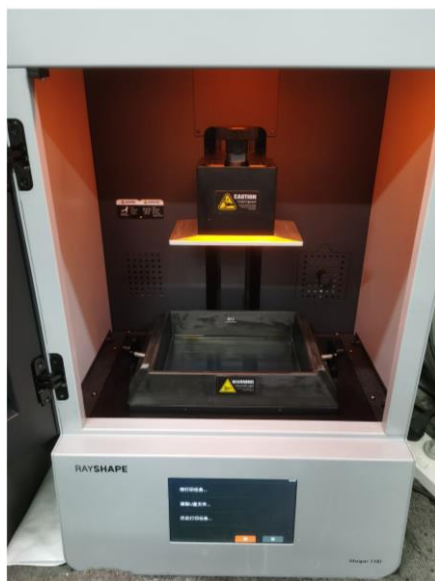


Figure S1. Image of 3D printer.

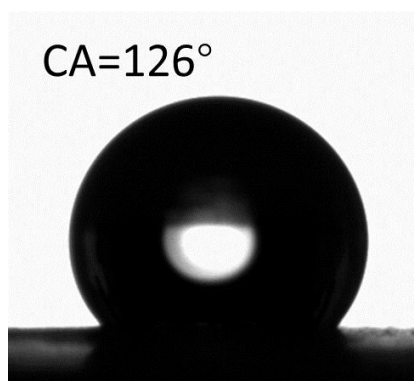


Figure S2. Contact angle of the resin after curing.

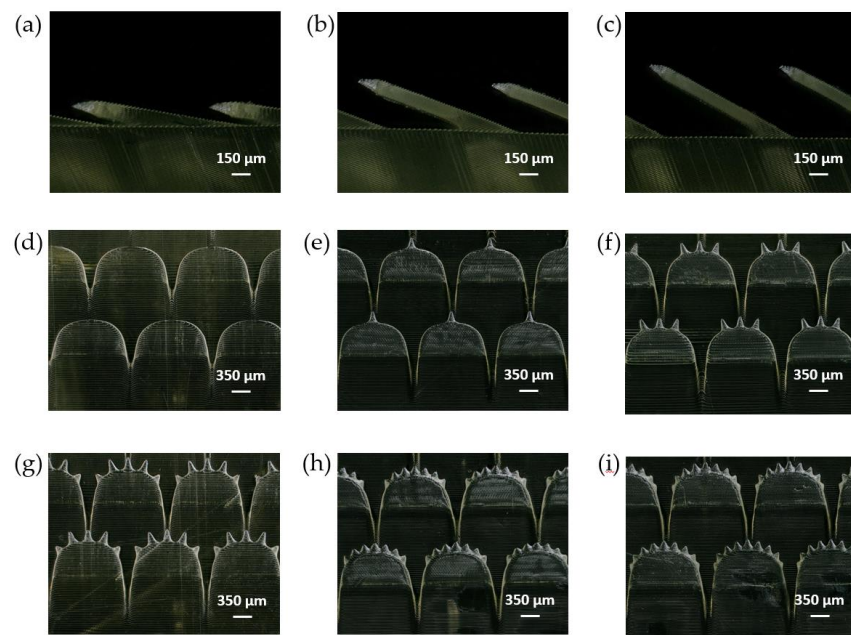


Figure S3. The test samples with different α and N : (a ~ c) different α , (d ~ i) different N .

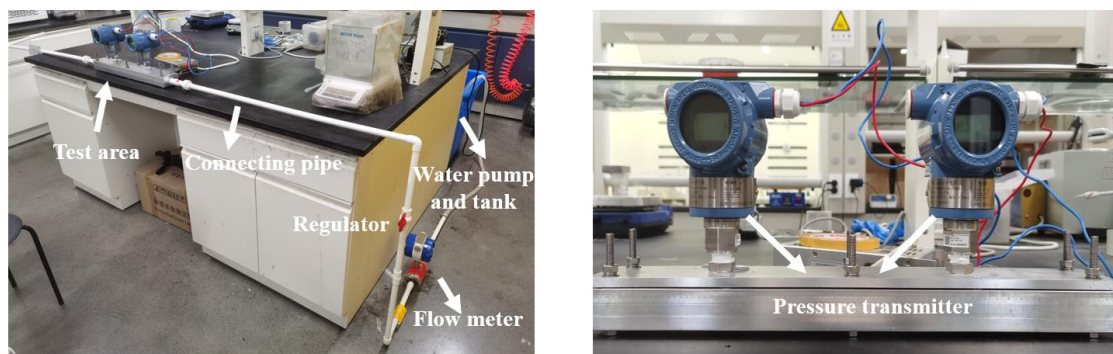


Figure S4. Self-built differential pressure resistance test platform.

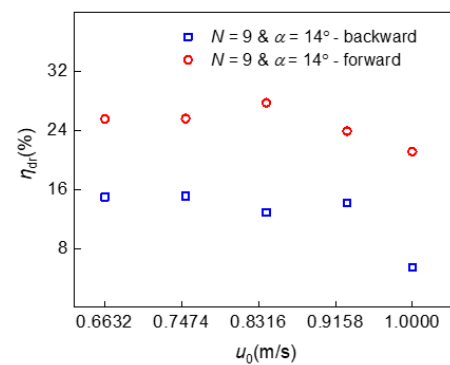


Figure S5. Drag reduction at different speeds with $N = 9$ and $\alpha = 14^\circ$.

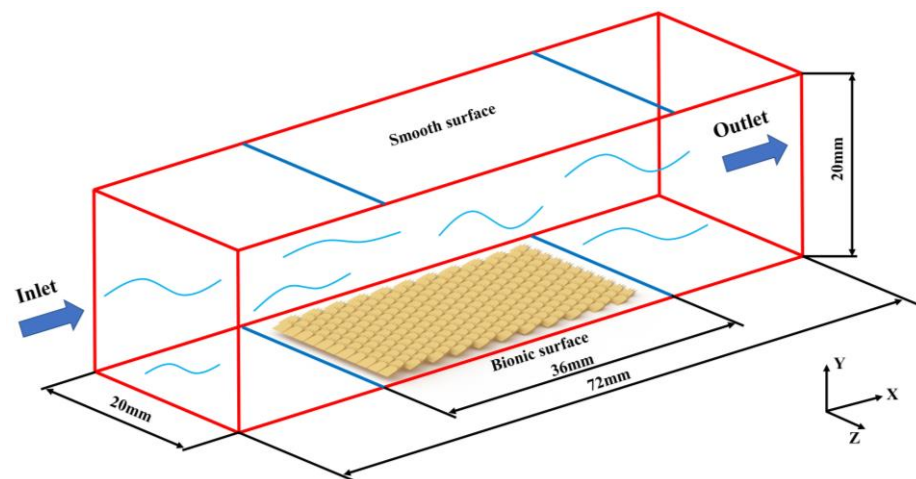


Figure S6. Biomimetic surface model for drag reduction experiments simulated by simulation software.

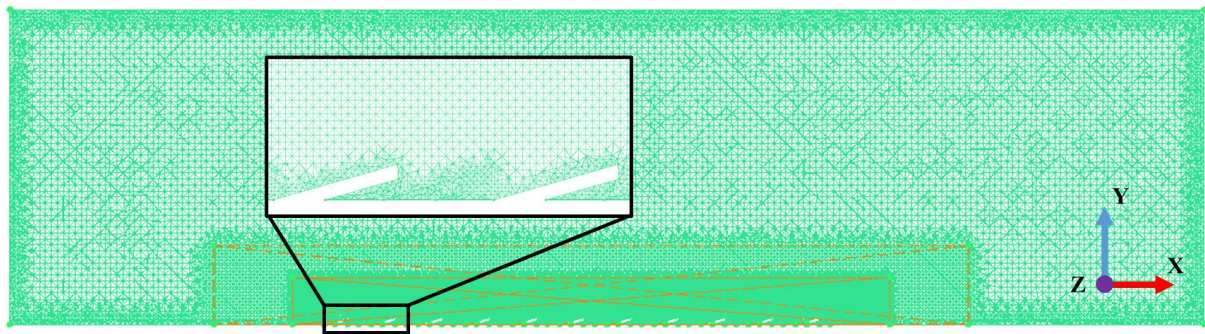


Figure S7. Meshing of the computational domain.

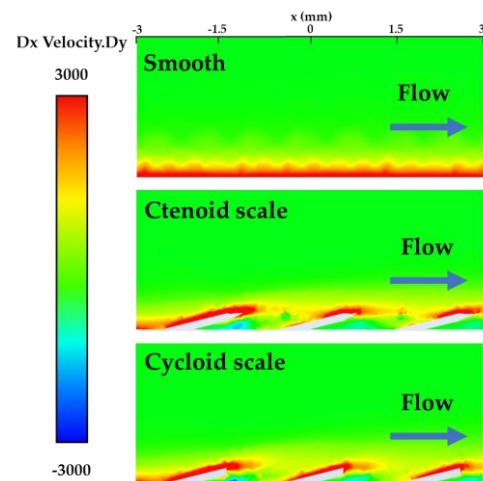


Figure S8. Velocity gradient diagram for the near-wall region on different surfaces.