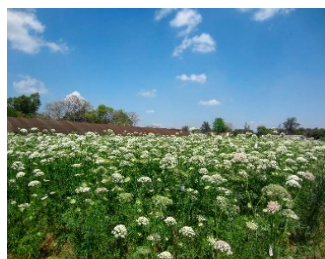


**Supplementary Figure S1: Pictorial presentation of the effect of different Plant Growth Promoting Bacteria (PGPB) with L-tryptophan on carrot flowering, seed setting, and mature umbel.**



**Carrot seed crop at  
flowering**



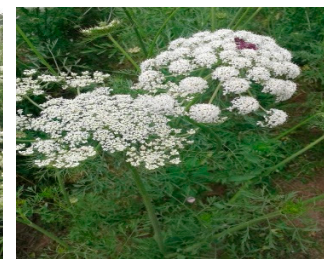
**Flowering (PsJN +  
L-tryptophan)**



**Flowering (MN17 +  
L-tryptophan)**



**Flowering (MN34 +  
L-tryptophan)**



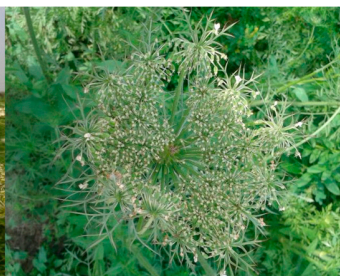
**Flowering (MN54 +  
L-tryptophan)**



**Carrot seed crop at  
Seed setting**



**Seed setting (PsJN +  
L-tryptophan)**



**Seed setting (MN17 +  
L-tryptophan)**



**Seed setting (MN34 +  
L-tryptophan)**



**Seed setting (MN54 +  
L-tryptophan)**



**Carrot seed crop at  
Mature umbel**



**Mature umbel (PsJN  
+ L-tryptophan)**



**Mature umbel (MN17  
+ L-tryptophan)**



**Mature umbel (MN34  
+ L-tryptophan)**



**Mature umbel (MN54  
+ L-tryptophan)**